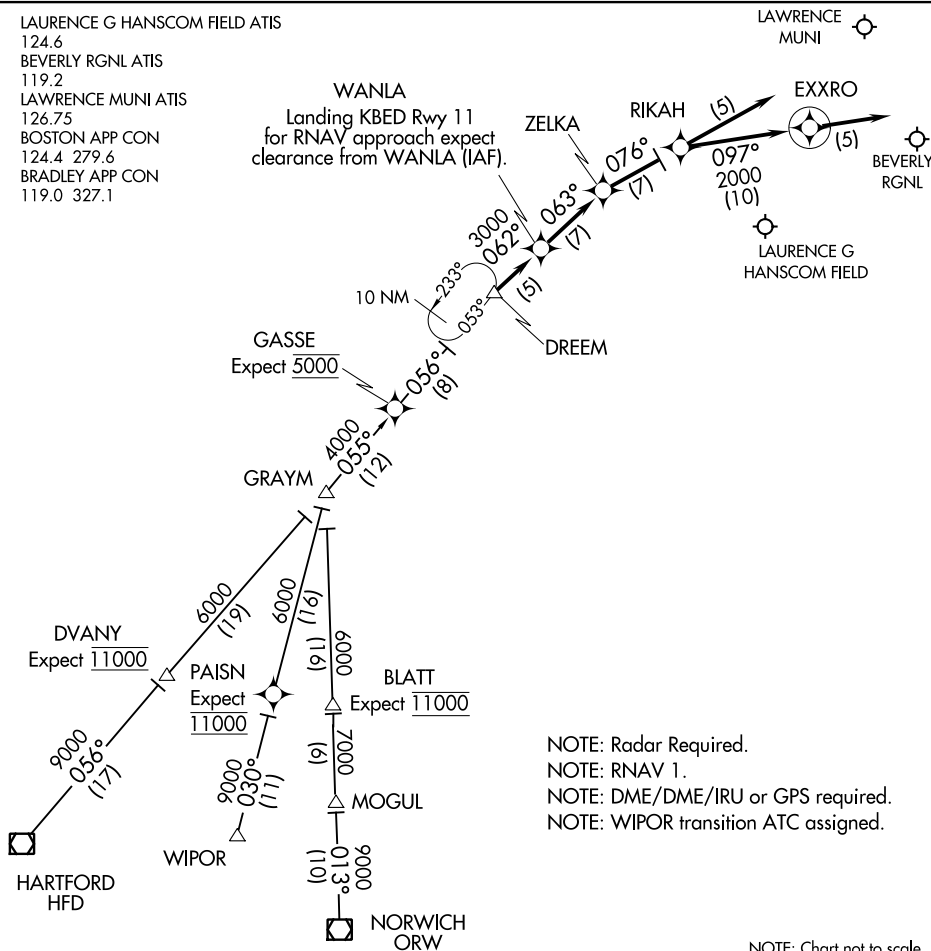


# DREEM TWO ARRIVAL (RNAV)

BEDFORD, MASSACHUSETTS

LAURENCE G HANSCOM FIELD ATIS  
 124.6  
 BEVERLY RGNL ATIS  
 119.2  
 LAWRENCE MUNI ATIS  
 126.75  
 BOSTON APP CON  
 124.4 279.6  
 BRADLEY APP CON  
 119.0 327.1

WANLA  
 Landing KBED Rwy 11  
 for RNAV approach expect  
 clearance from WANLA (IAF).



NOTE: Radar Required.  
 NOTE: RNAV 1.  
 NOTE: DME/DME/IRU or GPS required.  
 NOTE: WIPOR transition ATC assigned.

NOTE: Chart not to scale.

HARTFORD TRANSITION (HFD.DREEM2):  
NORWICH TRANSITION (ORW.DREEM2):  
WIPOR TRANSITION (WIPOR.DREEM2):

LANDING BVY ALL RWYS, BED RWY 23 & 29: From DREEM on track 062° to WANLA , then on track 063° to ZELKA, then on track 076° to RIKAH, then on track 097° to EXXRO, then on track 097°. Expect radar vectors to destination airport and final approach course.

LANDING BED RWY 11: From DREEM on track 062° to WANLA, then on track 063° to ZELKA. Expect ILS approach.

LANDING LWM ALL RWYS: From DREEM on track 062° to WANLA, then on track 063° to ZELKA, then on track 076° to RIKAH, then on track 076°, expect radar vectors to final approach course.

# DREEM TWO ARRIVAL (RNAV)

BEDFORD, MASSACHUSETTS

(GRAYM.GRAYM6) 18312  
**GRAYM SIX ARRIVAL**

AL-626 (FAA)

BEDFORD, MASSACHUSETTS

LAURENCE G HANSCOM FIELD ATIS  
 124.6  
 BEVERLY RGNL ATIS  
 119.2  
 LAWRENCE MUNI ATIS  
 126.75  
 BOSTON APP CON  
 124.4 279.6  
 BRADLEY APP CON  
 119.0 327.1

GARDNER  
 110.6 GDM  
 Chan 43

LAWRENCE  
 MUNI

FITCHBURG  
 MUNI

BEVERLY  
 RGNL

LAURENCE G  
 HANSCOM FIELD

DREEM  
 N42°21.71'  
 W71°44.57'

RNAV Equipped Aircraft: Proceed direct destination. Expect RADAR vectors to approach course.  
 Non-RNAV Equipped Aircraft: Expect RADAR vectors to approach course.

GRAYM  
 N42°06.07'  
 W72°01.89'

GASSE  
 N42°15.77'  
 W71°51.29'  
 Expect 5000

DVANY  
 N41°51.74'  
 W72°18.19'  
 Expect 11000

HARTFORD  
 114.9 HFD  
 Chan 96  
 N41°38.47'-W72°32.85'

PAISN  
 N41°50.38'  
 W72°07.04'

BLATT  
 N41°49.62'  
 W72°00.92'  
 Expect 11000

PROVIDENCE  
 115.6 PVD  
 Chan 103

WIPOR  
 N41°39.38'  
 W72°10.63'

MOGUL  
 N41°43.38'  
 W72°00.55'

NORWICH  
 110.0 ORW  
 Chan 37  
 N41°33.38'-W71°59.96'  
 L-33-34, H-10-12

NOTE: RADAR required.  
 NOTE: STAR applicable to aircraft requesting 11000 and above.  
 NOTE: ATC may assign STAR to aircraft at and below 10000.

NOTE: Chart not to scale.

**ARRIVAL ROUTE DESCRIPTION**

HARTFORD TRANSITION (HFD.GRAYM6): From over HFD VOR/DME on HFD R-053 to GRAYM. Thence. . .

NORWICH TRANSITION (ORW.GRAYM6): From over ORW VOR/DME on ORW R-011 to GRAYM. Thence. . .

. . . From over GRAYM on HFD R-053 to GASSE, then to DREEM, at DREEM:

RNAV EQUIPPED AIRCRAFT: Proceed direct destination expect radar vectors to approach course.

NON-RNAV EQUIPPED AIRCRAFT: Expect radar vectors to approach course.

**GRAYM SIX ARRIVAL**  
 (GRAYM.GRAYM6) 08NOV18

BEDFORD, MASSACHUSETTS

NE-1, 12 SEP 2019 to 10 OCT 2019

NE-1, 12 SEP 2019 to 10 OCT 2019

ZELKA TWO ARRIVAL (RNAV)  
 (ZELKA.ZELKA2) 07DEC17

(ZELKA.ZELKA2) 17341  
 ZELKA TWO ARRIVAL (RNAV)

AL-626 (FAA)

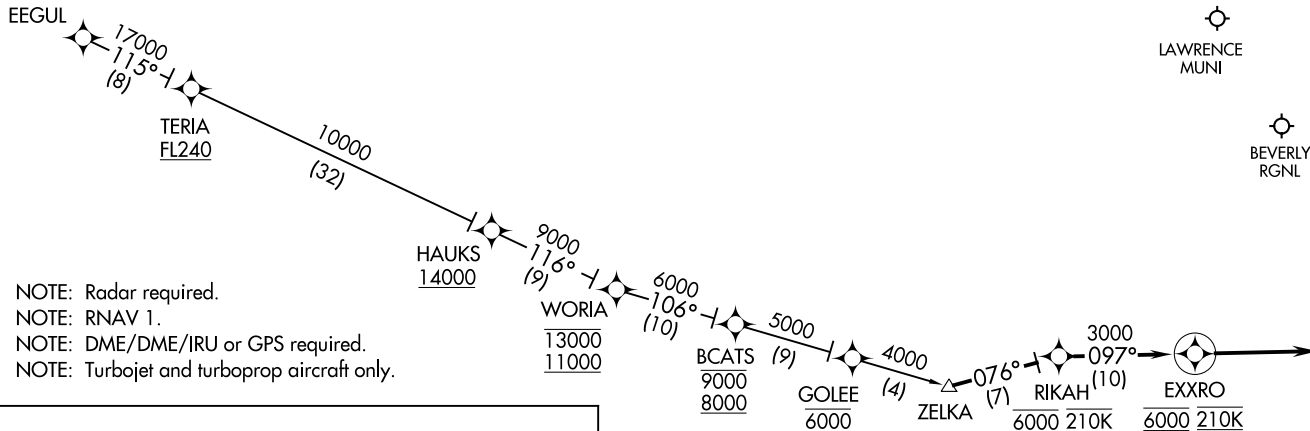
BEDFORD, MASSACHUSETTS

BOSTON APP CON  
 124.4 279.6  
 LAURENCE G HANSCOM FIELD ATIS  
 124.6  
 BEVERLY RGNL ATIS  
 119.2  
 LAWRENCE MUNI ATIS  
 126.75

  
 LAWRENCE  
 MUNI

  
 BEVERLY  
 RGNL

  
 LAURENCE G  
 HANSCOM FIELD



NOTE: Radar required.  
 NOTE: RNAV 1.  
 NOTE: DME/DME/IRU or GPS required.  
 NOTE: Turbojet and turboprop aircraft only.

ARRIVAL ROUTE DESCRIPTION

EEGUL TRANSITION (EEGUL.ZELKA2):

From ZELKA on track 076° to cross RIKAH at 6000 and 210K, then on track 097° to cross EXXRO at 6000 and at 210K, then on track 097°. Expect radar vectors to destination airport and final approach course.



NOTE: Chart not to scale.

BEDFORD, MASSACHUSETTS