

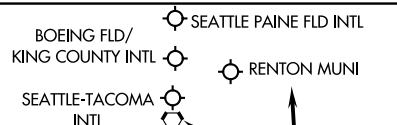
SEATTLE APP CON
123.9 338.2
BFI ATIS
127.75
PAE ATIS
128.65
RNT ATIS
126.95
SEA D-ATIS
118.0

(CHINS, CHINS5) 23278
CHINS FIVE ARRIVAL

AL-582 (FAA)

SEATTLE, WASHINGTON

NOTE: DME and RADAR required.
NOTE: Landing north/landing south restrictions
are issued per the KSEA flow.



SEATTLE
116.8 SEA
Chan 115

AUBRN
TURBOJET:
Landing South: 12000 250K
Maintain 12000.

HUMPP
TURBOJET:
Landing South: 15000

RADDY
PROP/TURBOPROP:
10000 250K
Maintain 10000.

TURBOJET:
Landing North: 12000 250K
Maintain 12000.
Landing South: 16000 270K

Landing BFI Rwy 32L/R: 11000 250K
Maintain 11000.

Landing Renton Muni: 11000

YAKIMA
116.0 YKM
Chan 107

EPHRATA
112.6 EPH
Chan 73

MOSES LAKE
115.0 MWH
Chan 97

PENDLETON
114.7 PDT
Chan 94

KIMBERLY
115.6 IMB
Chan 103



NOTE: Chart not to scale.

(NARRATIVE ON FOLLOWING PAGE)

CHINS FIVE ARRIVAL
(CHINS, CHINS5) 08SEP22

SEATTLE, WASHINGTON

ARRIVAL ROUTE DESCRIPTION

PENDLETON TRANSITION (PDT.CHINS5): From over PDT VORTAC on PDT R-296 to BRUKK, then on PDT R-296 to SUNED, then on YKM R-108 to YKM VORTAC, then on YKM R-284 to CHINS, thence

SUNED TRANSITION (SUNED.CHINS5): From SUNED on YKM R-108 to YKM VORTAC, then on YKM R-284 to CHINS, thence

YAKIMA TRANSITION (YKM.CHINS5): From over YKM VORTAC on YKM R-284 to CHINS, thence

. . . . from CHINS on YKM R-284 and SEA R-104 to RADDY, then on SEA R-104 to HUMPP, then on SEA R-104 to AUBRN, thence

LANDING NORTH: Heading 250° for vectors to final approach course.

LANDING SOUTH: Heading 343° for vectors to final approach course.

LANDING RENTON MUNI: Heading 343° for vectors to final approach course.

LANDING SEATTLE PAINE FLD INTL: Heading 343° for vectors to final approach course.

LOST COMMUNICATIONS: After AUBRN proceed direct SEA VORTAC.

NW-1, 22 FEB 2024 to 21 MAR 2024

NW-1, 22 FEB 2024 to 21 MAR 2024

DME and RADAR required.

GLASR THREE ARRIVAL
(GLASR, GLASR3) 251AN24

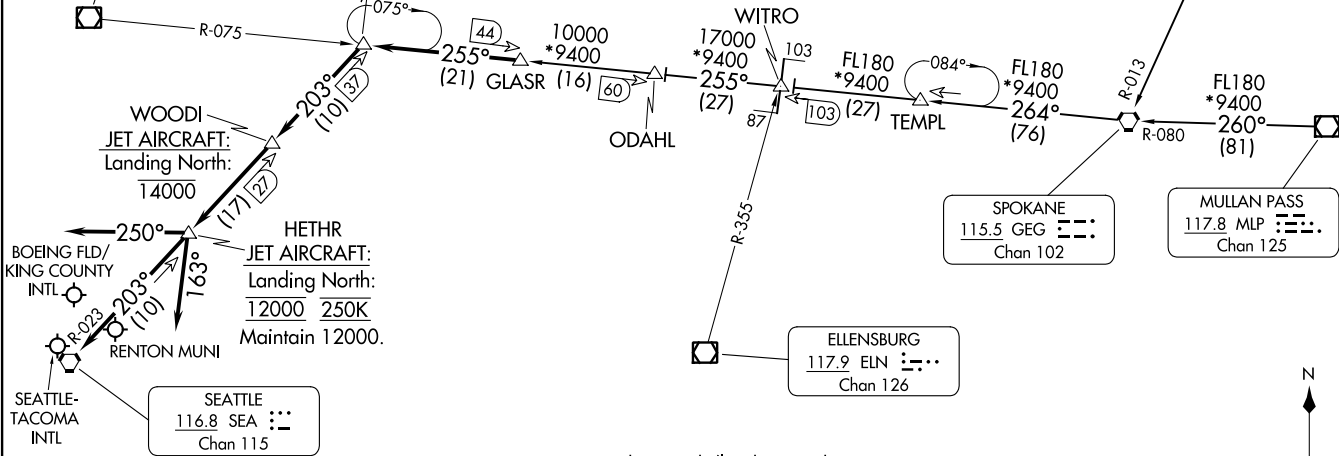
GLASR THREE ARRIVAL
(GLASR, GLASR3) 24025

SEATTLE APP CON
123.9 338.2
BFI ATIS
127.75
KTCM D-ATIS
135.825 270.1
RNT ATIS
126.95
SEA D-ATIS
118.0

JAKSN
PROP/TURBOPROP: 10000 250K
Maintain 10000.
JET AIRCRAFT: Landing North: 16000 270K
Landing South: 12000 250K
Maintain 12000.
Landing BFI or RNT: 11000 250K
Maintain 11000.

CRANBROOK
112.1 YXC
Chan 58

PAINE
110.6 PAE
Chan 43



NOTE: Landing north/landing south restrictions are issued per the KSEA flow.

(CONTINUED ON FOLLOWING PAGE)

NOTE: Chart not to scale.

AL-582 (FAA)



SEATTLE, WASHINGTON

SEATTLE, WASHINGTON

ARRIVAL ROUTE DESCRIPTION

CRANBROOK TRANSITION (YXC.GLASR3): From over YXC VOR/DME on YXC R-192 and GEG R-013 to GEG VORTAC, then on GEG R-264 to WITRO, then on PAE R-075 to GLASR. Thence. . . .

MULLAN PASS TRANSITION (MLP.GLASR3): From over MLP VOR/DME on MLP R-260 and GEG R-080 to GEG VORTAC, then on GEG R-264 to WITRO, then on PAE R-075 to GLASR. Thence. . . .

SPOKANE TRANSITION (GEG.GLASR3): From over GEG VORTAC on GEG R-264 to WITRO, then on PAE R-075 to GLASR. Thence. . . .

TEMPL TRANSITION (TEMPL.GLASR3): From over TEMPL on GEG R-264 to WITRO, then on PAE R-075 to GLASR. Thence. . . .

. . . .from GLASR on PAE R-075 to JAKSN, then on SEA R-023 to WOODI, then on SEA R-023 to HETHR. Thence. . . .

LANDING NORTH: Heading 163° for vectors to final approach course.

LANDING SOUTH: Heading 250° for vectors to final approach course.

LANDING MCCHORD FLD: From over HETHR, proceed direct to SEA VORTAC.

LANDING RENTON MUNI: From over HETHR, proceed direct to SEA VORTAC.

LOST COMMUNICATIONS: From HETHR, proceed direct SEA VORTAC.

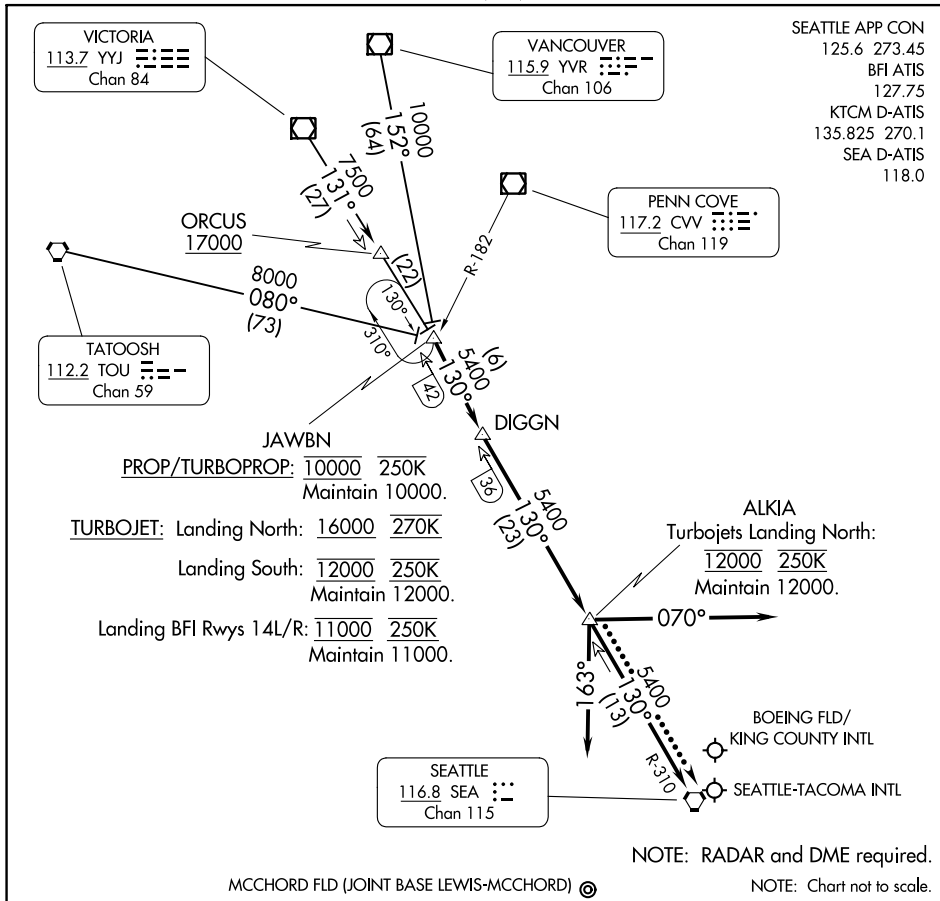
NW-1, 22 FEB 2024 to 21 MAR 2024

NW-1, 22 FEB 2024 to 21 MAR 2024

JAWBN SIX ARRIVAL

AL-582 (FAA)

SEATTLE, WASHINGTON



NW-1, 22 FEB 2024 to 21 MAR 2024

NW-1, 22 FEB 2024 to 21 MAR 2024

ARRIVAL ROUTE DESCRIPTION

TATOOSH TRANSITION (TOU.JAWBN6): From over TOU VORTAC on TOU R-080 to JAWBN. Thence . . .

VANCOUVER TRANSITION (YVR.JAWBN6): From over YVR VOR/DME on YVR R-152 to JAWBN. Thence . . .

VICTORIA TRANSITION (YYJ.JAWBN6): From over YYJ VOR/DME on YYJ R-131 to JAWBN. Thence . . .

. . . from over JAWBN on SEA R-310 to DIGGN then on SEA R-310 to ALKIA thence . . .

LANDING SOUTH: depart ALKIA heading 070° for vectors to final approach course.

LANDING NORTH: depart ALKIA heading 163° for vectors to final approach course.

LANDING MCCHORD FLD: depart ALKIA proceed direct SEA VORTAC.

LOST COMMUNICATIONS: After ALKIA, proceed direct SEA VORTAC.

JAWBN SIX ARRIVAL

SEATTLE, WASHINGTON

OLYMPIA TWO ARRIVAL

AL-582 (FAA)

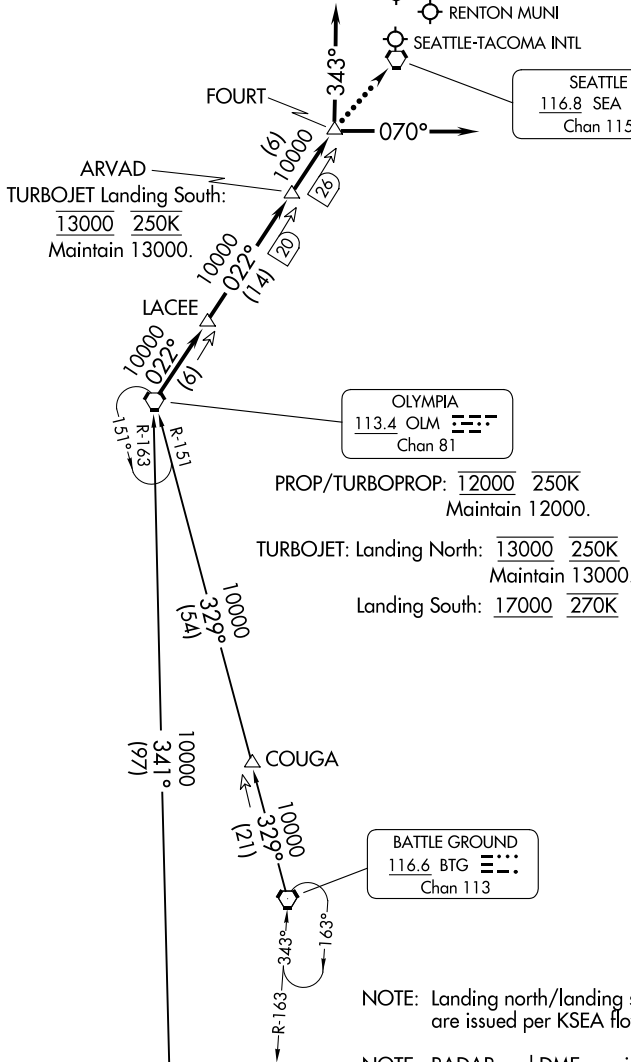
SEATTLE, WASHINGTON

SEATTLE APP CON
 125.6 273.45
 BFI ATIS
 127.75
 PAE ATIS
 128.65
 RTN ATIS
 126.95
 SEA D-ATIS
 118.0

SEATTLE PAINE FLD INTL

BOEING FLD/
 KING COUNTY INTL
 RENTON MUNI
 SEATTLE-TACOMA INTL

SEATTLE
 116.8 SEA
 Chan 115



OLYMPIA
 113.4 OLM
 Chan 81

PROP/TURBOPROP: 12000 250K
 Maintain 12000.

TURBOJET: Landing North: 13000 250K
 Maintain 13000.
 Landing South: 17000 270K

BATTLE GROUND
 116.6 BTG
 Chan 113

NEWBERG
 117.4 UBG
 Chan 121

NOTE: Landing north/landing south restrictions are issued per KSEA flow.

NOTE: RADAR and DME required.

(NARRATIVE ON FOLLOWING PAGE)

NOTE: Chart not to scale.

NW-1, 22 FEB 2024 to 21 MAR 2024

NW-1, 22 FEB 2024 to 21 MAR 2024

OLYMPIA TWO ARRIVAL

SEATTLE, WASHINGTON

ARRIVAL ROUTE DESCRIPTION

BATTLE GROUND TRANSITION (BTG.OLM2): From over BTG VORTAC on BTG R-329 to COUGA, then on BTG R-329 and OLM R-151 to OLM VORTAC. Thence. . . .

NEWBERG TRANSITION (UBG.OLM2): From over UBG VOR/DME on UBG R-341 and OLM R-163 to OLM VORTAC. Thence. . . .

. . . . from over OLM VORTAC on OLM R-022 to LACEE, then on OLM R-022 to ARVAD, then on OLM R-022 to FOURT, thence. . . .

. . . . LANDING NORTH SEA/BFI: Depart FOURT heading 070° for vectors to final approach course.

. . . . LANDING SOUTH SEA/BFI: Depart FOURT heading 343° for vectors to final approach course.

. . . . LANDING SEATTLE PAINE FLD INTL: Depart FOURT heading 343° for vectors to final approach course.

. . . . LANDING RENTON MUNI: Depart FOURT heading 343° for vectors to final approach course.

LOST COMMUNICATIONS: From over FOURT, proceed direct SEA VORTAC.

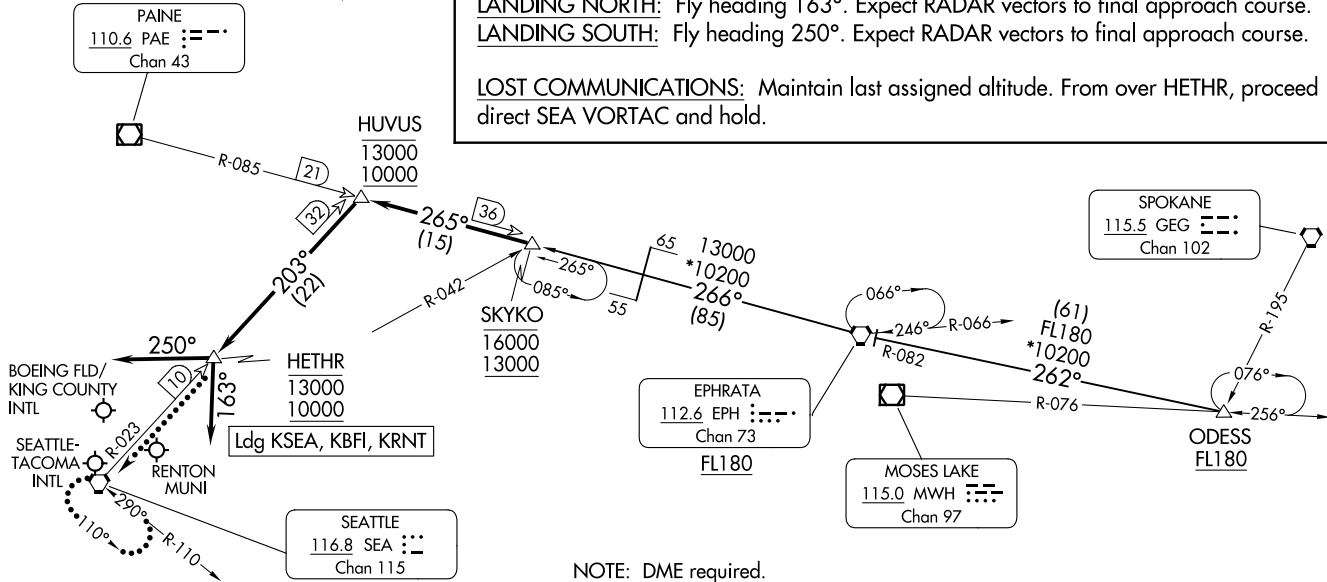
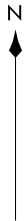
NW-1, 22 FEB 2024 to 21 MAR 2024

NW-1, 22 FEB 2024 to 21 MAR 2024

SKYKO ONE ARRIVAL
(SKYKO.SKYKO1) 19MAY22

SEATTLE, WASHINGTON

SEATTLE APP CON
123.9 338.2
BFI ATIS
127.75
RTN ATIS
126.95
SEA D-ATIS
118.0



ARRIVAL ROUTE DESCRIPTION

EPHRATA TRANSITION (EPH.SKYKO1): From over EPH VORTAC on EPH R-266 and PAE R-085 to SKYKO. Thence

ODESS TRANSITION (ODESS.SKYKO1): From over ODESS on EPH R-082 to EPH VORTAC, then on EPH R-266 and PAE R-085 to SKYKO. Thence

. . . . from SKYKO on PAINE VOR/DME (PAE) R-085 to cross HUVUS between 10000 and 13000, then on SEATTLE VORTAC (SEA) SEA R-023 to cross HETHR between 10000 and 13000, thence

LANDING NORTH: Fly heading 163°. Expect RADAR vectors to final approach course.

LANDING SOUTH: Fly heading 250°. Expect RADAR vectors to final approach course.

LOST COMMUNICATIONS: Maintain last assigned altitude. From over HETHR, proceed direct SEA VORTAC and hold.

NOTE: DME required.
NOTE: RADAR required.
NOTE: Turboprop and prop aircraft only.

NOTE: Chart not to scale.

(SKYKO.SKYKO1) 23334
SKYKO ONE ARRIVAL

AL-582 (FAA)

SEATTLE, WASHINGTON