

WAAS CH 97519	APP CRS 174°	Rwy Idg TDZE Apt Elev	3501 1030 1030
W17A			

RNAV (GPS) RWY 17

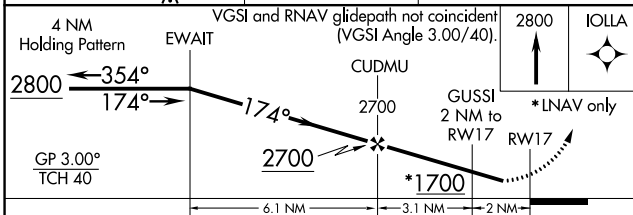
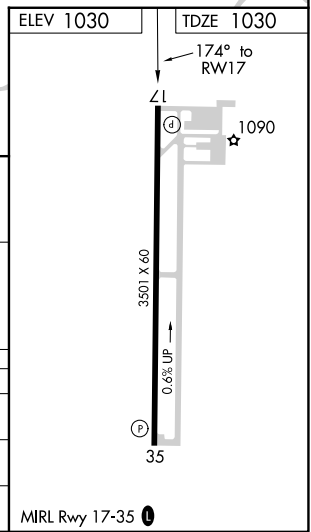
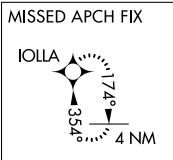
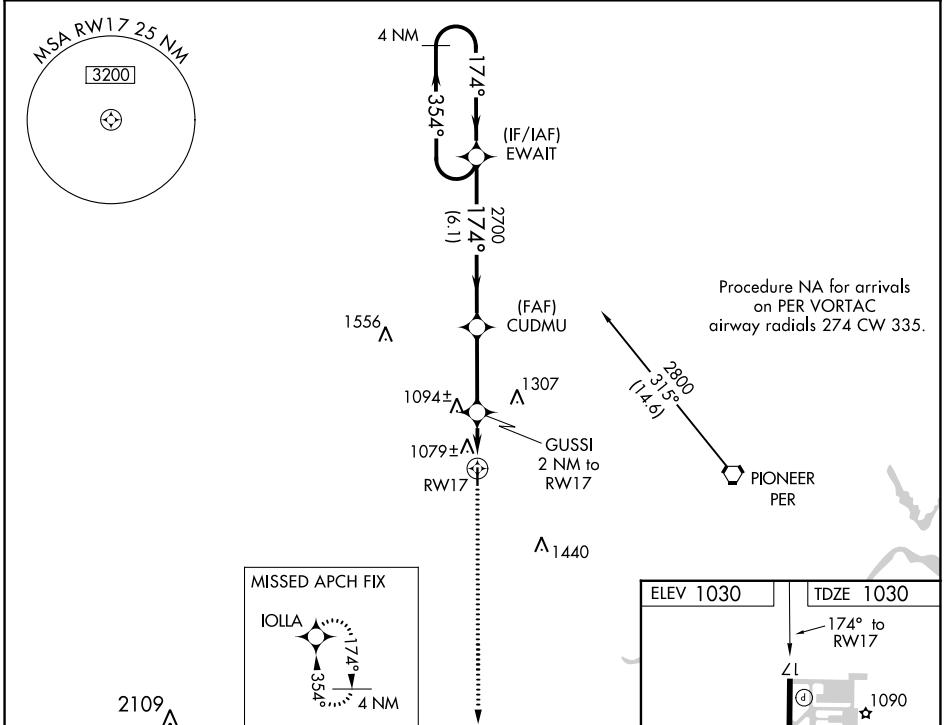
BLACKWELL-TONKAWA MUNI (BKN)

RNP APCH.

⚠ For uncompensated Baro-VNAV systems, LNAV/VNAV NA below -17°C or above 54°C. Rwy 17 helicopter visibility reduction below 3/4 SM NA. When local altimeter setting not received, use Ponca City altimeter setting and increase all DA 31 feet and all MDA 40 feet and LNAV Cat C visibility 1/4 mile. Baro-VNAV NA when using Ponca City altimeter setting.

MISSED APPROACH: Climb to 2800 direct IOLLA and hold.

AWOS-3PT 120.575	KANSAS CITY CENTER 127.8 319.1	UNICOM 122.8 (CTAF) 0
----------------------------	--	---------------------------------



CATEGORY	A	B	C	D
LPV DA	1280-1	250 (300-1)		NA
LNAV/VNAV DA	1376-1 1/4	346 (400-1 1/4)		NA
LNAV MDA	1400-1	370 (400-1)		NA

SC-1, 22 FEB 2024 to 21 MAR 2024

SC-1, 22 FEB 2024 to 21 MAR 2024

WAAS CH 61119 W35A	APP CRS 354°	Rwy Idg TDZE Apt Elev	3501 1026 1030
--	------------------------	-----------------------------	---

RNAV (GPS) RWY 35

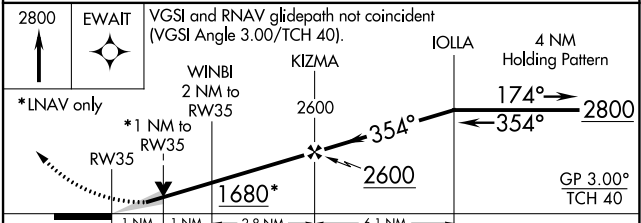
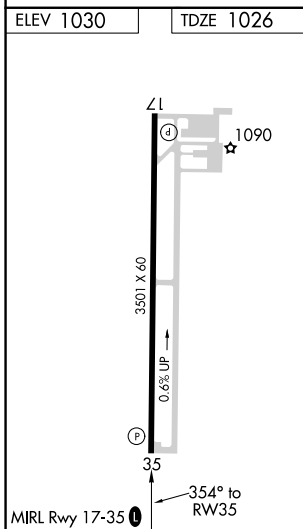
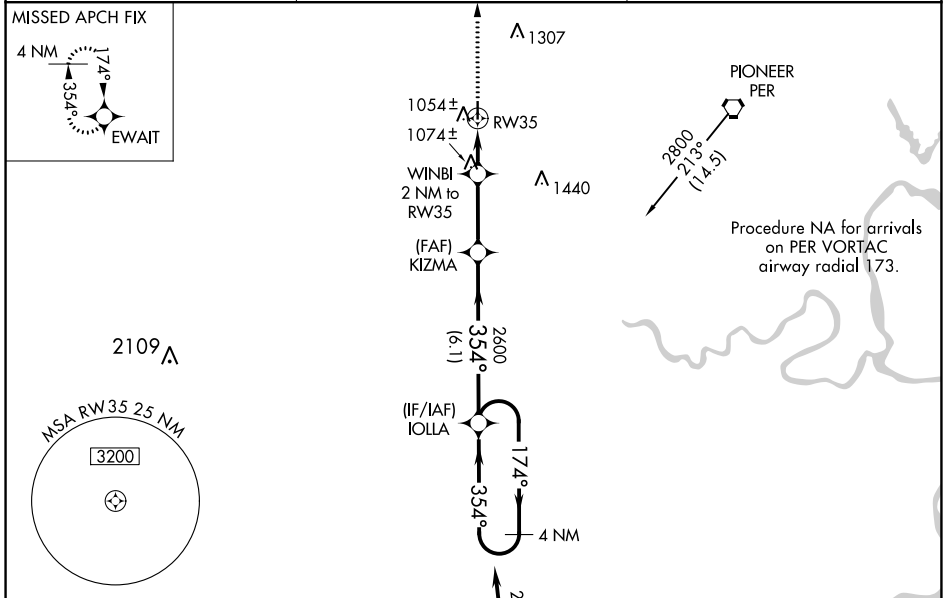
BLACKWELL-TONKAWA MUNI (BKN)

RNP APCH.

▼ For uncompensated Baro-VNAV systems, LNAV/VNAV NA below -17°C or above 54°C. When local altimeter setting not received, use Ponca City altimeter setting and increase all DA 31 feet and all MDA 40 feet and LNAV/VNAV all Cts visibility ¼ mile. Baro-VNAV and VDP NA when using Ponca City altimeter setting.

MISSED APPROACH: Climb to 2800 direct EWAIT and hold.

AWOS-3PT 120.575	KANSAS CITY CENTER 127.8 319.1	UNICOM 122.8 (CTAF) 0
----------------------------	--	---------------------------------



CATEGORY	A	B	C	D
LPV DA	1276-1	250 (300-1)		NA
LNAV/VNAV DA	1324-1	298 (300-1)		NA
LNAV MDA	1340-1	314 (400-1)		NA

SC-1, 22 FEB 2024 to 21 MAR 2024

SC-1, 22 FEB 2024 to 21 MAR 2024

VORTAC PER 113.2 Chan 79	APP CRS 263°	Rwy Idg TDZE Apt Elev N/A N/A 1030
--	------------------------	--

VOR-A

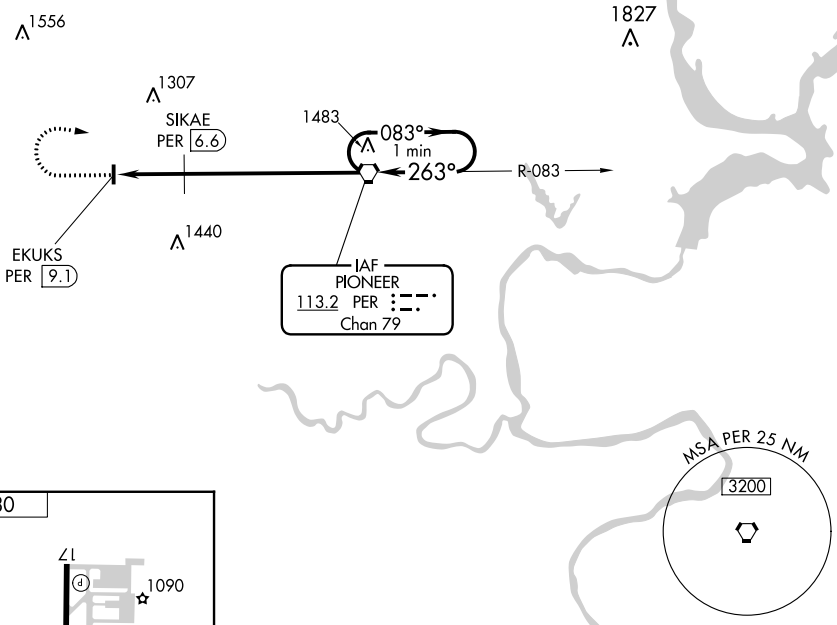
BLACKWELL-TONKAWA MUNI (BKN)



When local altimeter setting not received, use Ponca City altimeter setting and increase all MDA 40 feet.

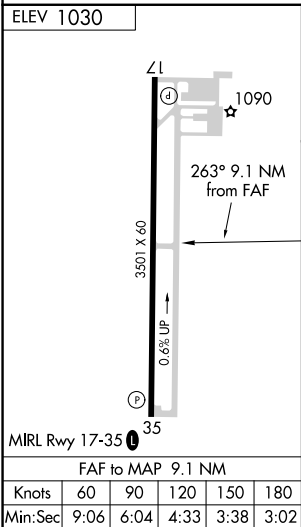
MISSED APPROACH: Climb to 2800 then right turn direct PER VORTAC and hold.

AWOS-3PT 120.575	KANSAS CITY CENTER 127.8 319.1	UNICOM 122.8 (CTAF) 0
----------------------------	--	--



SC-1, 22 FEB 2024 to 21 MAR 2024

SC-1, 22 FEB 2024 to 21 MAR 2024



2800	PER	One Minute Holding Pattern		
PER VORTAC	SIKAE PER 6.6	083° → 2800		
EKUKS PER 9.1	263° ←	← 263°		
* 1680 when using Ponca City altimeter setting				
CATEGORY	A	B	C	D
CIRCLING	1640-1	610 (700-1)	1640-1 ³ / ₄ 610 (700-1 ³ / ₄)	NA
SIKAE FIX MINIMUMS				
CIRCLING	1440-1 410 (500-1)	1480-1 450 (500-1)	1620-1 ³ / ₄ 590 (600-1 ³ / ₄)	NA