

(BOI3.BOI) 18312

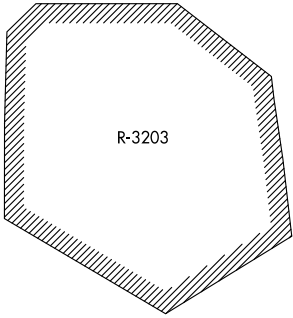
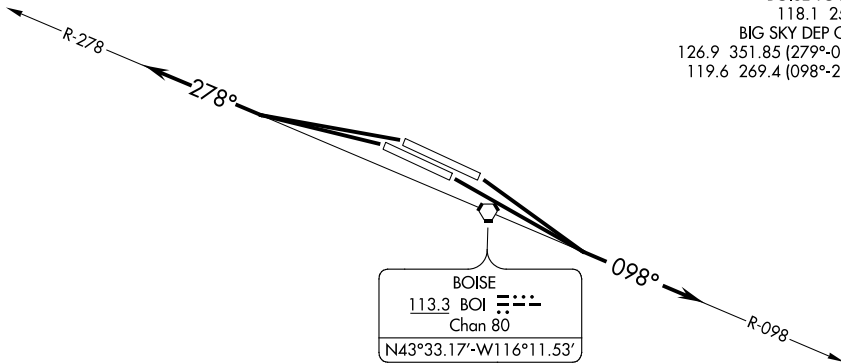
BOISE THREE DEPARTURE

AL-57 (FAA)

BOISE AIR TERMINAL/GOWEN FIELD (BOI)
BOISE, IDAHO

**TOP ALTITUDE:
16000**

D-ATIS	123.9	290.4
CLNC DEL	125.9	323.2
GND CON	121.7	348.6
BOISE TOWER	118.1	257.8
BIG SKY DEP CON	126.9	351.85 (279°-097°)
	119.6	269.4 (098°-278°)



NOTE: RADAR required.

TAKEOFF MINIMUMS

Rwys 28L/R: Standard.

Rwys 10L/R: Standard with minimum climb of 240' per NM to 5700.

NOTE: Chart not to scale.



DEPARTURE ROUTE DESCRIPTION

TAKEOFF RUNWAY 10L/R: Climb to 16000 or lower assigned altitude on BOI VORTAC R-098, thence. . . .

TAKEOFF RUNWAY 28L/R: Climb to 16000 or lower assigned altitude on BOI VORTAC R-278, thence. . . .

. . . .Expect RADAR vectors to assigned route, expect filed altitude 10 minutes after departure.

LOST COMMUNICATIONS: If not in contact with Boise Departure Control at 10000 or assigned altitude if lower, continue climb to assigned altitude and thence on assigned route.

BOISE THREE DEPARTURE

(BOI3.BOI) 26MAY16

BOISE, IDAHO
BOISE AIR TERMINAL/GOWEN FIELD (BOI)

NW-1, 05 DEC 2019 to 02 JAN 2020

NW-1, 05 DEC 2019 to 02 JAN 2020