

BASTROP, LOUISIANA

AL-5566 (FAA)

22195

NDB BQP 329	APP CRS 330°	Rwy ldg TDZE Apt Elev	4002 168 168
-----------------------	------------------------	-----------------------------	---

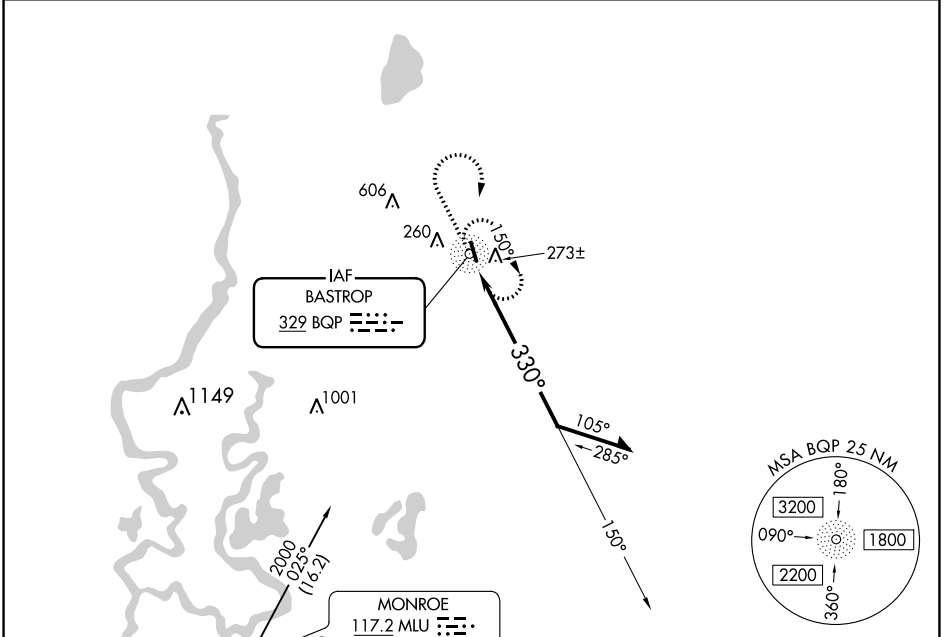
NDB RWY 34

MOREHOUSE MEML (BQP)

NA When local altimeter setting not received, use Monroe altimeter setting and increase all MDA 60 feet and Cat C visibility ¼ mile.

MISSED APPROACH: Climb to 1000 then climbing right turn to 2000 direct BQP NDB and hold.

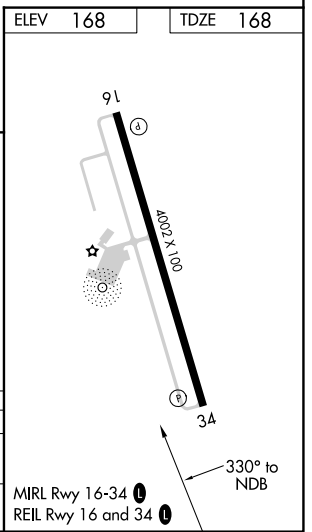
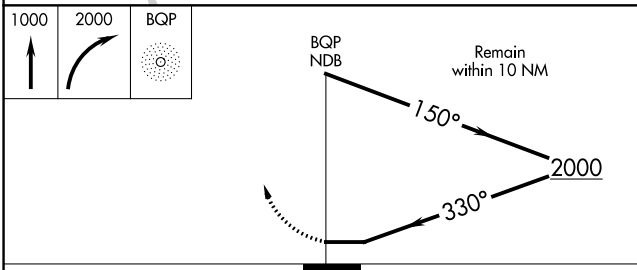
AWOS-3PT 118.375	MONROE APP CON ★ 126.9 307.9	UNICOM 122.8 (CTAF)
----------------------------	--	-------------------------------



SC-4, 22 FEB 2024 to 21 MAR 2024

SC-4, 22 FEB 2024 to 21 MAR 2024

ELEV 168	TDZE 168
----------	----------



CATEGORY	A	B	C	D
S-34	820-1 652 (700-1)		820-1¾ 652 (700-1¾)	NA
CIRCLING	820-1 652 (700-1)		820-1¾ 652 (700-1¾)	NA

BASTROP, LOUISIANA
Amdt 6B 10MAR11

32°45'N-91°53'W

MOREHOUSE MEML (BQP)

NDB RWY 34

WAAS CH 58307 W16A	APP CRS 161°	Rwy ldg 4002 TDZE 168 Apt Elev 168
--	------------------------	---

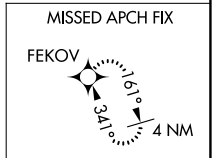
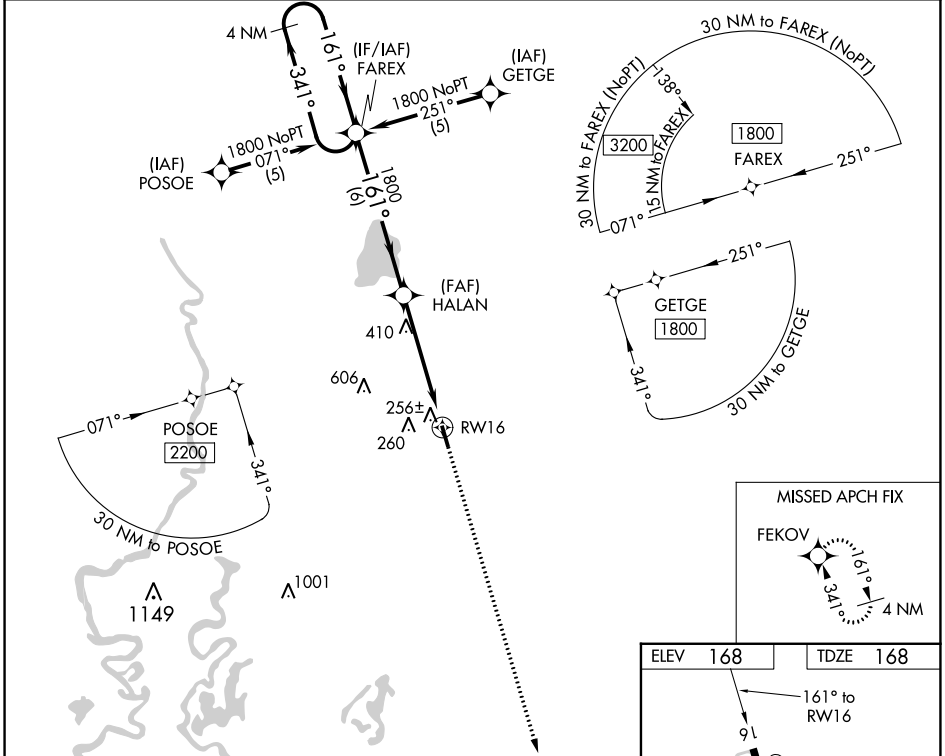
RNAV (GPS) RWY 16

MOREHOUSE MEML (BQP)

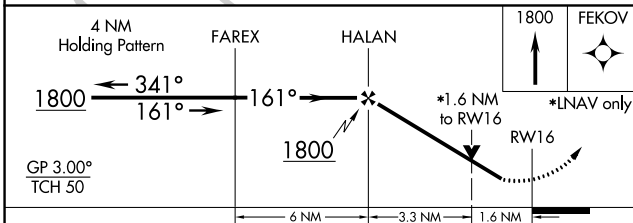
⚠ For uncompensated Baro-VNAV systems, LNAV/VNAV NA below -15°C (5°F) or above 34°C (130°F). DME/DME RNP-0.3 NA. Visibility reduction by helicopters NA. When local altimeter setting not received, use Monroe altimeter setting and increase LPV DA to 550, LNAV/VNAV DA to 577 and all MDA 60 feet; increase LNAV Cat C visibility 1/8 SM and Circling Cat C visibility 1/4 SM. Baro-VNAV NA when using Monroe altimeter setting. VDP NA when using Monroe altimeter setting.

MISSED APPROACH:
Climb to 1800 direct FEKOV and hold.

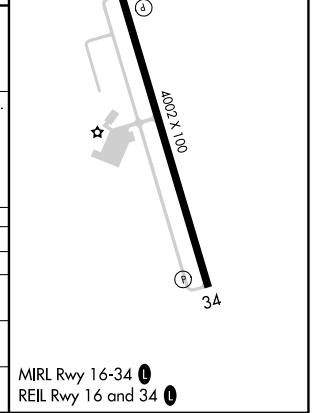
AWOS-3PT 118.375	MONROE APP CON ★ 126.9 307.9	UNICOM 122.8 (CTAF) 0
----------------------------	--	---------------------------------



ELEV 168	TDZE 168
----------	----------



CATEGORY	A	B	C	D
LPV DA	499-1¼	331 (400-1¼)		NA
LNAV/VNAV DA	526-1¼	358 (400-1¼)		NA
LNAV MDA	720-1	552 (600-1)	720-1½ 552 (600-1½)	NA
CIRCLING	720-1 552 (600-1)	780-1 612 (700-1)	820-1¾ 652 (700-1¾)	NA



SC-4, 22 FEB 2024 to 21 MAR 2024

SC-4, 22 FEB 2024 to 21 MAR 2024

WAAS CH 90308 W34A	APP CRS 341°	Rwy ldg 4002 TDZE 168 Apt Elev 168
--	------------------------	---

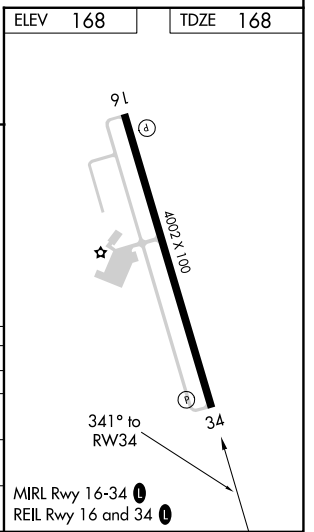
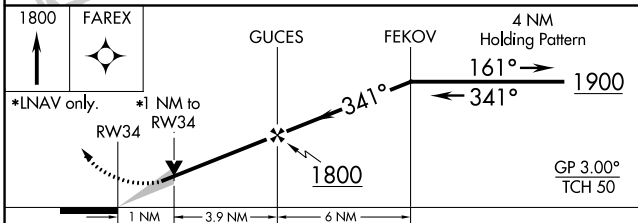
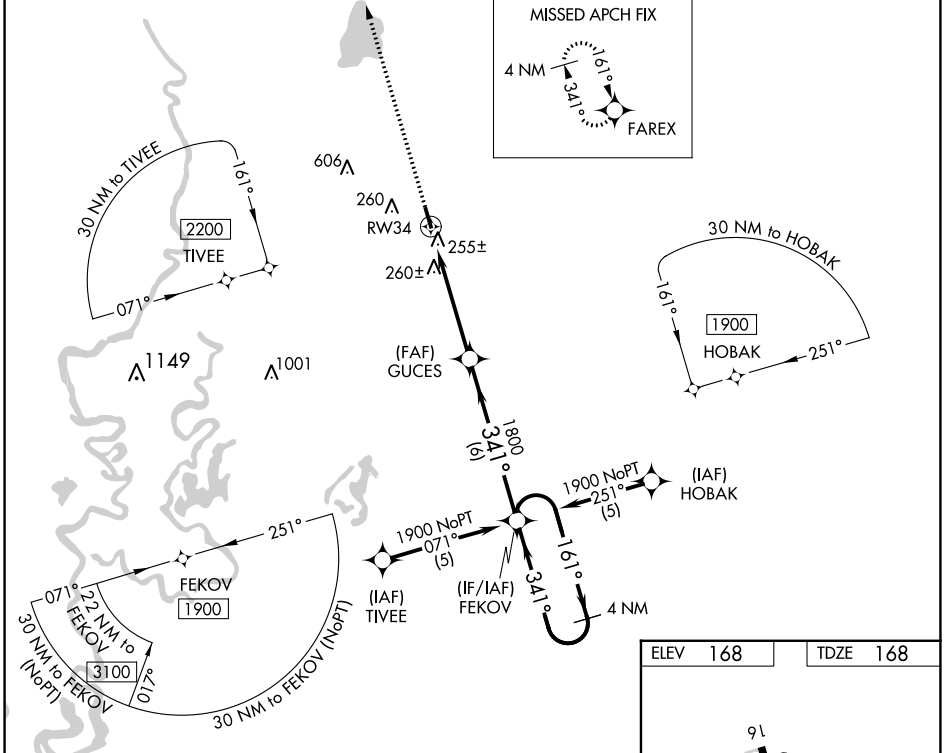
RNAV (GPS) RWY 34

MOREHOUSE MEML (BQP)

⚠ Baro-VNAV NA when using Monroe altimeter setting. For uncompensated Baro-VNAV systems, LNAV/VNAV NA below -15°C (5°F) or above 54°C (130°F). DME/DME RNP-0.3 NA. VDP NA when using Monroe altimeter setting. When local altimeter setting not received, use Monroe altimeter setting and increase LPV DA to 559, LNAV/VNAV DA to 602 and all MDA 60 feet; increase LNAV Cat C visibility 1/8 SM and Circling Cat C visibility 1/4 SM.

MISSED APPROACH:
Climb to 1800 direct FAREX and hold.

AWOS-3PT 118.375	MONROE APP CON ★ 126.9 307.9	UNICOM 122.8 (CTAF) 0
----------------------------	--	---------------------------------



CATEGORY	A	B	C	D
LPV DA	508-1¼	340 (400-1¼)		NA
LNAV/VNAV DA	551-1¼	383 (400-1¼)		NA
LNAV MDA	520-1	352 (400-1)		NA
CIRCLING	560-1 392 (400-1)	780-1 612 (700-1)	820-1¼ 652 (700-1¼)	NA

SC-4, 22 FEB 2024 to 21 MAR 2024

SC-4, 22 FEB 2024 to 21 MAR 2024

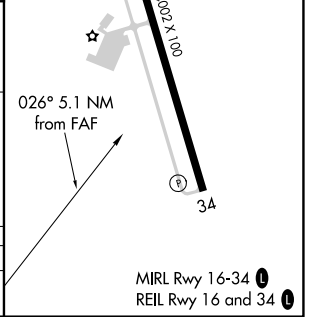
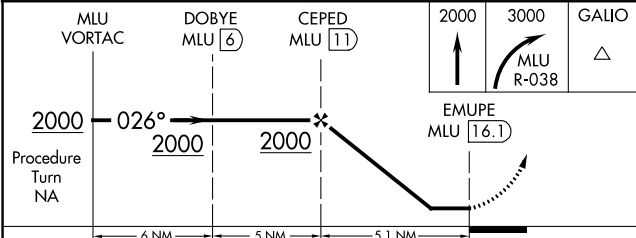
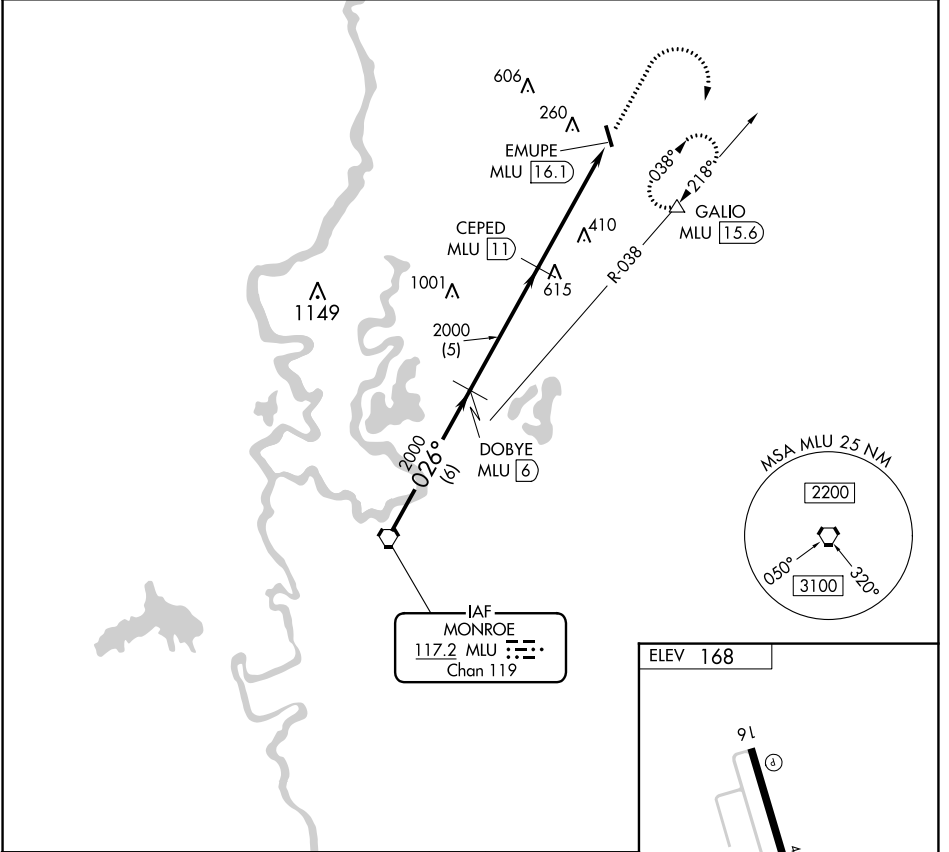
VORTAC MLU 117.2 Chan 119	APP CRS 026°	Rwy Idg TDZE Apt Elev N/A N/A 168
---	------------------------	---

VOR/DME-A
MOREHOUSE MEML (BQP)

NA When local altimeter setting not received, use Monroe altimeter setting and increase all MDA 60 feet and Cat C visibility ¼ mile.

MISSED APPROACH: Climb to 2000 then climbing right turn to 3000 via MLU R-038 to GALIO/MLU 15.6 DME and hold.

AWOS-3PT 118.375	MONROE APP CON* 126.9 307.9	UNICOM 122.8 (CTAF)
----------------------------	---------------------------------------	-------------------------------



CATEGORY	A	B	C	D
CIRCLING	720-1 552 (600-1)	780-1 612 (700-1)	820-1¼ 652 (700-1¼)	NA