

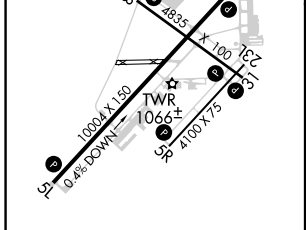
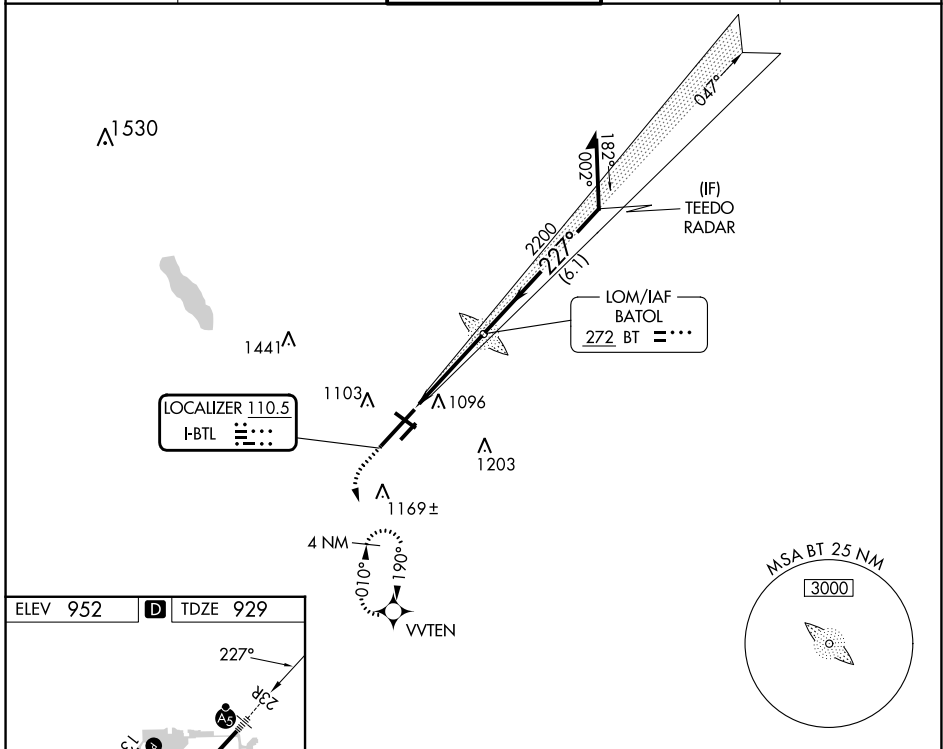
LOC I-BTL 110.5	APP CRS 227°	Rwy Idg 10004 TDZE 929 Apt Elev 952
---------------------------	------------------------	--

ILS or LOC RWY 23R

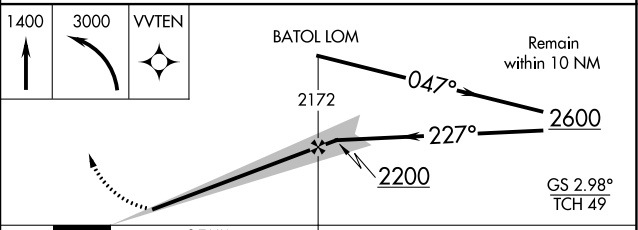
BATTLE CREEK EXEC AT KELLOGG FLD (BTL)

ADF required. RADAR required for procedure entry. RNP APCH - GPS.		MALSR 	MISSED APPROACH: Climb to 1400 then climbing left turn to 3000 direct VVTEN and hold, continue climb-in-hold to 3000.
<p>⚠ Circling NA to Rwys 5R and 23L. Circling Rwy 31 NA at night. For inop ALS increase S-LOC 23R Cat C/D visibility to 1 3/8 SM. * RVR 1800 authorized with use of FD or AP or HUD to DA (NA when using Grand Rapids altimeter setting).</p>			

ATIS 128.325	GREAT LAKES APP CON* 119.2 239.25	BATTLE CREEK TOWER* 126.825 (CTAF)	GND CON 121.7	UNICOM 122.95
------------------------	---	--	-------------------------	-------------------------



ELEV 952	D	TDZE 929			
<p>HIRL Rwy 5L-23R MIRL Rwy 13-31 and 5R-23L REIL Rwys 5L, 5R, 13, 23L and 31</p> <p>FAF to MAP 3.7 NM</p>					
Knots	60	90	120	150	180
Min:Sec	3:42	2:28	1:51	1:29	1:14



CATEGORY	A	B	C	D
S-ILS 23R*	1129/24		200 (200-1/2)	
S-LOC 23R	1400/24	471 (500-1/2)	1400/50	471 (500-1)
C CIRCLING	1420-1 468 (500-1)	1480-1 528 (600-1)	1520-1 1/2 568 (600-1 1/2)	1520-2 568 (600-2)

EC-1, 22 FEB 2024 to 21 MAR 2024

EC-1, 22 FEB 2024 to 21 MAR 2024

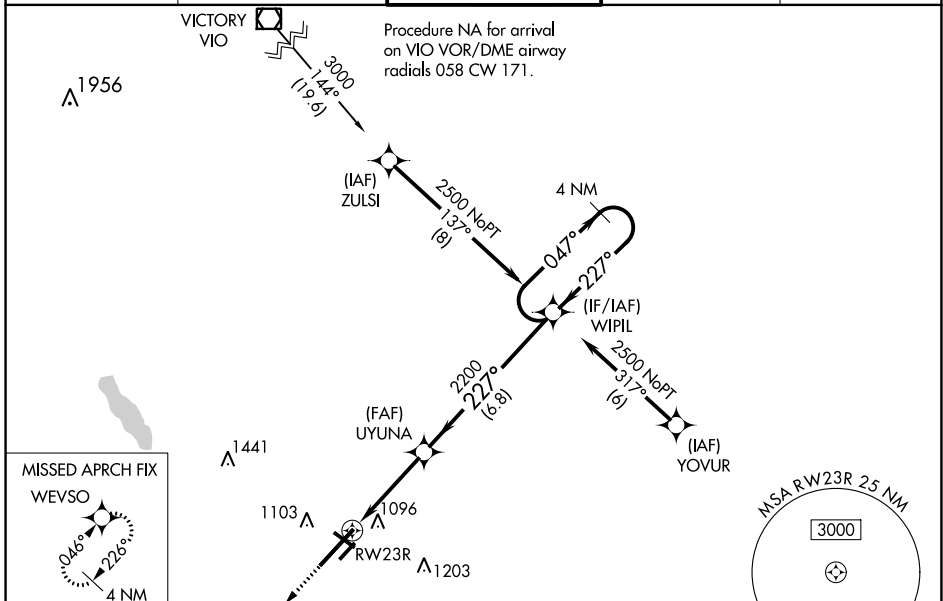
WAAS CH 56411 W23A	APP CRS 227°	Rwy Idg 10004 TDZE 929 Apt Elev 952
--	------------------------	--

RNAV (GPS) RWY 23R

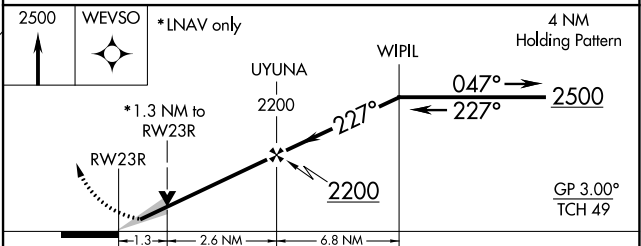
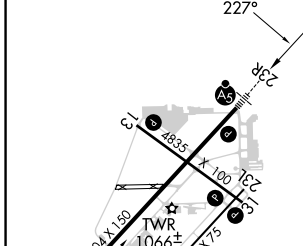
BATTLE CREEK EXEC AT KELLOGG FLD (BTL)

RNP APCH. Circling NA to Rwy 5R and 23L. Circling Rwy 31 NA at night. For uncompensated Baro-VNAV systems, LNAV/VNAV NA below -20°C or above 54°C. **RVR 1800 authorized with use of FD or AP or HUD to DA.	MALSR 	MISSED APPROACH: Climb to 2500 direct WEVSO and hold.
--	-----------	--

ATIS 128.325	GREAT LAKES APP CON* 119.2 239.25	BATTLE CREEK TOWER* 126.825 (CTAF)	GND CON 121.7	UNICOM 122.95
------------------------	---	--	-------------------------	-------------------------



ELEV 952	D	TDZE 929
----------	----------	----------



CATEGORY	A	B	C	D
LPV DA **		1129/24	200 (200-½)	
LNAV/VNAV DA		1258/32	329 (400-⅝)	
LNAV MDA	1380/24	451 (500-½)	1380/45	451 (500-⅞)
<input checked="" type="checkbox"/> CIRCLING	1420-1 468 (500-1)	1480-1 528 (600-1)	1520-1½ 568 (600-1½)	1520-2 568 (600-2)

HIRL Rwy 5L-23R
 MIRL Rwy 13-31 and 5R-23L
 REIL Rwy 5L, 5R, 13, 23L and 31L

EC-1, 22 FEB 2024 to 21 MAR 2024

EC-1, 22 FEB 2024 to 21 MAR 2024

APP CRS Rwy Idg **4835**
 TDZE **930**
 Apt Elev **952**

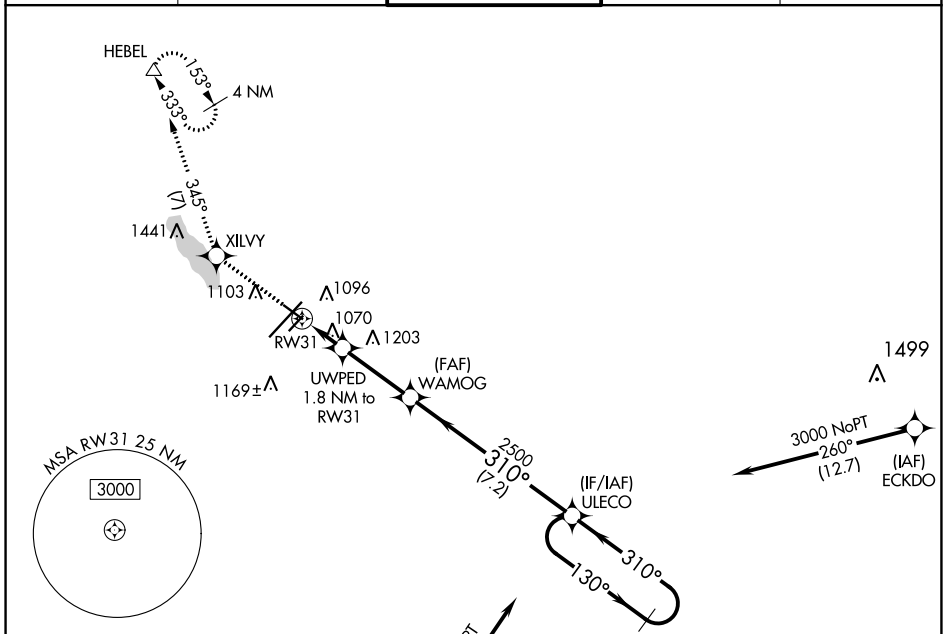
RNAV (GPS) RWY 31

BATTLE CREEK EXEC AT KELLOGG FLD (BTL)

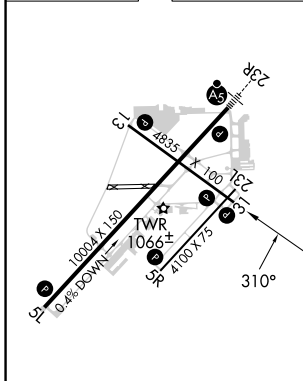
RNP APCH. MISSED APPROACH: Climb to 3000 direct XILVY and on 345° track to HEBEL and hold.

⚠ Cirdling NA to Rwys 5R and 23L. Rwy 31 helicopter visibility reduction below 1 SM NA. Procedure NA at night.

ATIS 128.325	GREAT LAKES APP CON★ 119.2 239.25	BATTLE CREEK TOWER★ 126.825 (CTAF)	GND CON 121.7	UNICOM 122.95
------------------------	---	--	-------------------------	-------------------------



ELEV 952 **D** TDZE 930



3000	XILVY	tr 345°	HEBEL	4 NM Holding Pattern
UWPED 1.8 NM to RW31	WAMOG	ULECO		
RW31	3.00 TCH 40	2500		
1540				
1.8 NM	3 NM	7.2 NM		
VGSI and descent angles not coincident (VGSI Angle 3.00/TCH 25).				

CATEGORY	A	B	C	D
LNAV MDA	1320-1	390 (400-1)	1320-1½	390 (400-1½)
C CIRCLING	1420-1 468 (500-1)	1480-1 528 (600-1)	1520-1½ 568 (600-1½)	1520-2 568 (600-2)

HIRL Rwy 5L-23R
 MIRL Rws 13-31 and 5R-23L
 REIL Rws 5L, 5R, 13, 23L and 31L

EC-1, 22 FEB 2024 to 21 MAR 2024

EC-1, 22 FEB 2024 to 21 MAR 2024

WAAS CH 61220 W05A	APP CRS 047°	Rwy Idg 10004 TDZE 952 Apt Elev 952
--	------------------------	--

RNAV (GPS) RWY 5L

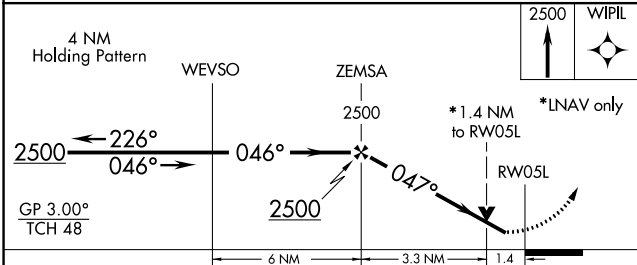
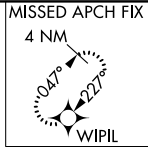
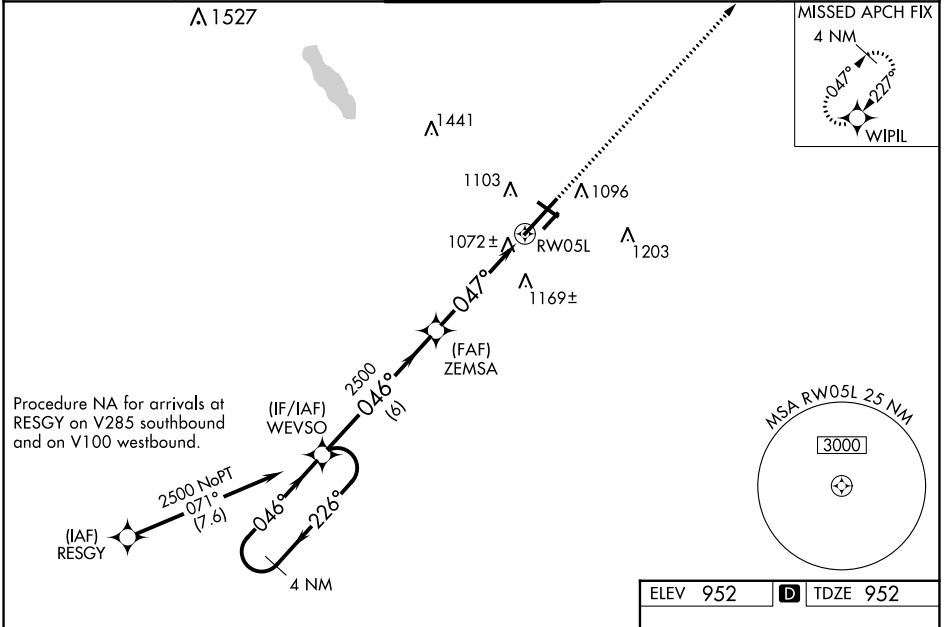
BATTLE CREEK EXEC AT KELLOGG FLD (BTL)

RNP APCH:

▼ For uncompensated Baro-VNAV systems, LNAV/VNAV NA below -16°C or above 37°C.
 ▲ Rwy 5L helicopter visibility reduction below ¾ SM NA. When local altimeter setting not received, use Grand Rapids altimeter setting: increase all DAs 106 feet and all visibilities ¾ SM; increase all MDAs 120 feet and increase LNAV Cats C and D visibility ¾ SM and Circling Cat C visibility ½ SM and Cat D visibility ¼ SM. VDP and Baro-VNAV NA when using Grand Rapids altimeter setting. Circling Rwy 31 NA at night. Circling NA to Rwys 5R and 23L.

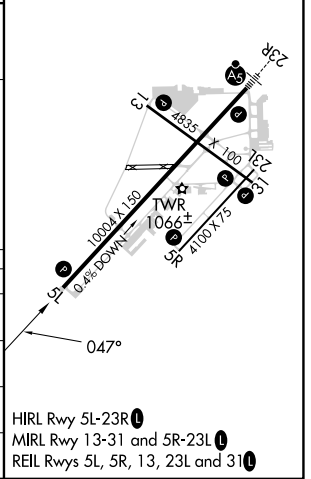
MISSED APPROACH:
Climb to 2500 direct
WIPIL and hold.

ATIS 128.325	GREAT LAKES APP CON* 119.2 239.25	BATTLE CREEK TOWER* 126.825 (CTAF)	GND CON 121.7	UNICOM 122.95
------------------------	---	--	-------------------------	-------------------------



ELEV 952	TDZE 952
----------	----------

CATEGORY	A	B	C	D
LPV DA		1317-1¼	365 (400-1¼)	
LNAV/VNAV DA		1253-1	301 (400-1)	
LNAV MDA	1440-1	488 (500-1)	1440-1¾	488 (500-1¾)
CIRCLING	1440-1 488 (500-1)	1480-1 528 (600-1)	1520-1½ 568 (600-1½)	1520-2 568 (600-2)



EC-1, 22 FEB 2024 to 21 MAR 2024

EC-1, 22 FEB 2024 to 21 MAR 2024