

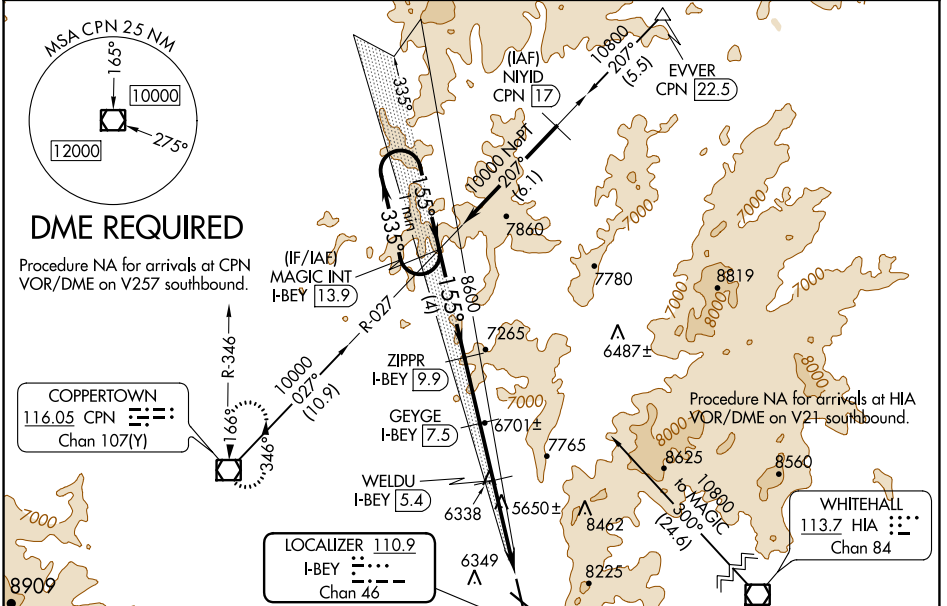
LOC/DME I-BEY 110.9 Chan 46	APP CRS 155°	Rwy Idg TDZE Apt Elev	9000 5523 5551
---	------------------------	-----------------------------	---

ILS or LOC RWY 15

BERT MOONEY (BTM)

<p>NA Circling NA northeast of Rwy 15-33. DME required. S-ILS 15 for inop ALS, increase all Cats visibility to 2½ SM. #S-ILS 15 for inop ALS, increase Cat C/D visibility to 1 SM. #S-LOC 15 for inop ALS, increase Cat C/D visibility to 1½ SM.</p>	<p>MALSR</p>	<p>MISSED APPROACH: (Do not exceed 190K until 7100) Climb to 7100 then climbing right turn to 11000 direct CPN VOR/DME and hold, continue climb-in-hold to 11000. #Missed approach requires minimum climb of 365 feet per NM to 8700s.</p>
---	---------------------	---

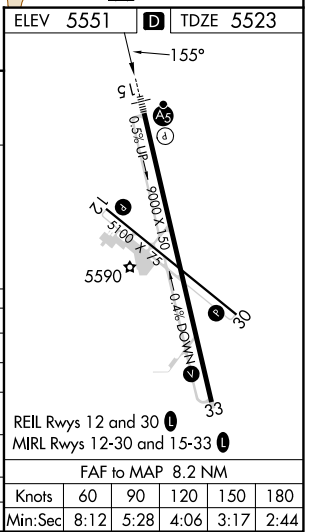
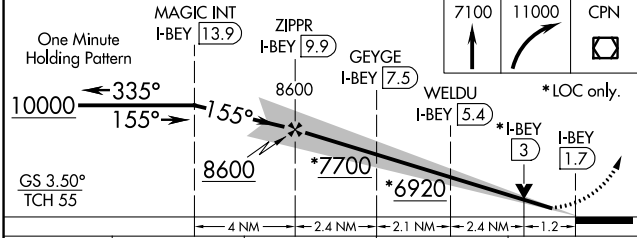
ASOS 135.175	SALT LAKE CENTER 132.4 338.3	UNICOM 123.0 (CTAF) 0
------------------------	--	---------------------------------



NW-1, 22 FEB 2024 to 21 MAR 2024

NW-1, 22 FEB 2024 to 21 MAR 2024

ELEV 5551	D TDZE 5523
-----------	--------------------



CATEGORY	A	B	C	D
S-ILS 15#	5778-½	255 (300-½)	5848-½	325 (300-½)
S-ILS 15	6280-178 757 (800-1%)			
S-LOC 15	6500-¾ 977 (1000-¾)	6500-1 977 (1000-1)	6500-2½	977 (1000-2½)
C CIRCLING	6660-1¼ 1109 (1200-1¼)	6660-1½ 1109 (1200-1½)	7060-3 1509 (1600-3)	7120-3 1569 (1600-3)
WELDU FIX MINIMUMS				
S-LOC 15#	6020-½	497 (500-½)	6020-1	497 (500-1)

REIL Rwy 12 and 30	MRL Rwy 12-30 and 15-33
FAF to MAP 8.2 NM	
Knots	60 90 120 150 180
Min:Sec	8:12 5:28 4:06 3:17 2:44

WAAS CH 56341 W15A	APP CRS 155°	Rwy Idg TDZE Apt Elev	9000 5523 5551
--	------------------------	-----------------------------	---

RNAV (GPS) RWY 15

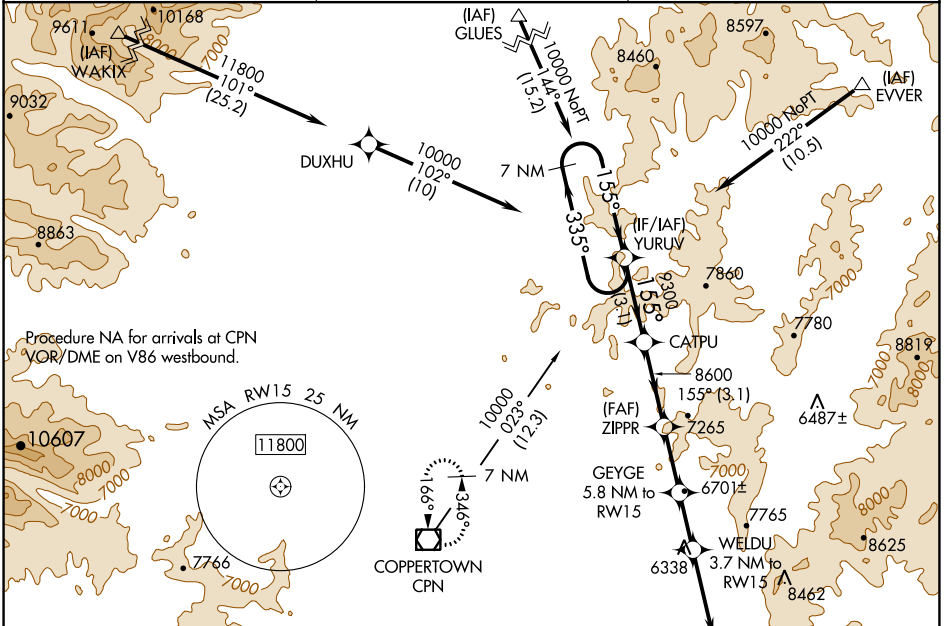
BERT MOONEY (BTM)

⚠ Circling NA northeast of Rwy 15-33. DME/DME RNP-0.3 NA. For Inop ALS, increase LPV all Cats visibility to 2½ SM, increase LPV# Cat C/D visibility to ¾ SM. Inop table does not apply to LNAV Cats C/D.

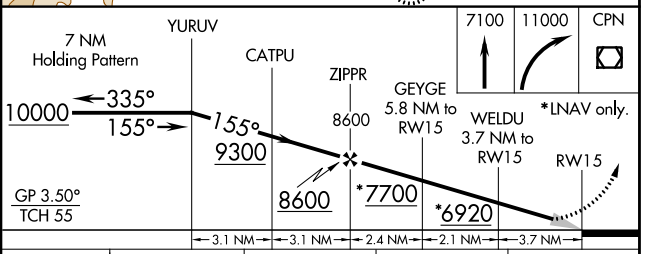
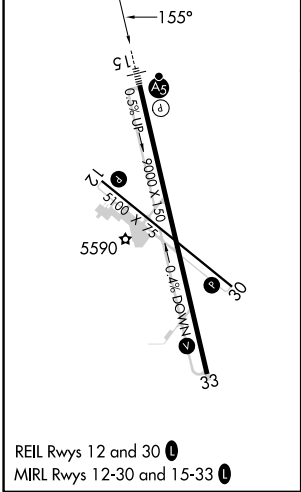
MALSR **AS**

MISSED APPROACH: (Do not exceed 190K until 7100) Climb to 7100 then climbing right turn to 11000 direct CPN VOR/DME and hold, continue climb-in-hold to 11000. #Missed approach requires minimum climb of 365 feet per NM to 8700.

ASOS 135.175	SALT LAKE CENTER 132.4 338.3	UNICOM 123.0(CTAF)
------------------------	--	------------------------------



ELEV 5551	D	TDZE 5523
-----------	----------	-----------



CATEGORY	A	B	C	D
LPV DA	6281-1⅞ 758 (800-1⅞)			
LPV DA#	5825-½ 302 (300-½)			
LNAV MDA	6780-¾ 1257 (1300-¾)	6780-1 1257 (1300-1)	6780-3 1257 (1300-3)	1257 (1300-3)
C CIRCLING	6780-1¼ 1229 (1300-1¼)		7060-3 1509 (1600-3)	7120-3 1569 (1600-3)

NW-1, 22 FEB 2024 to 21 MAR 2024

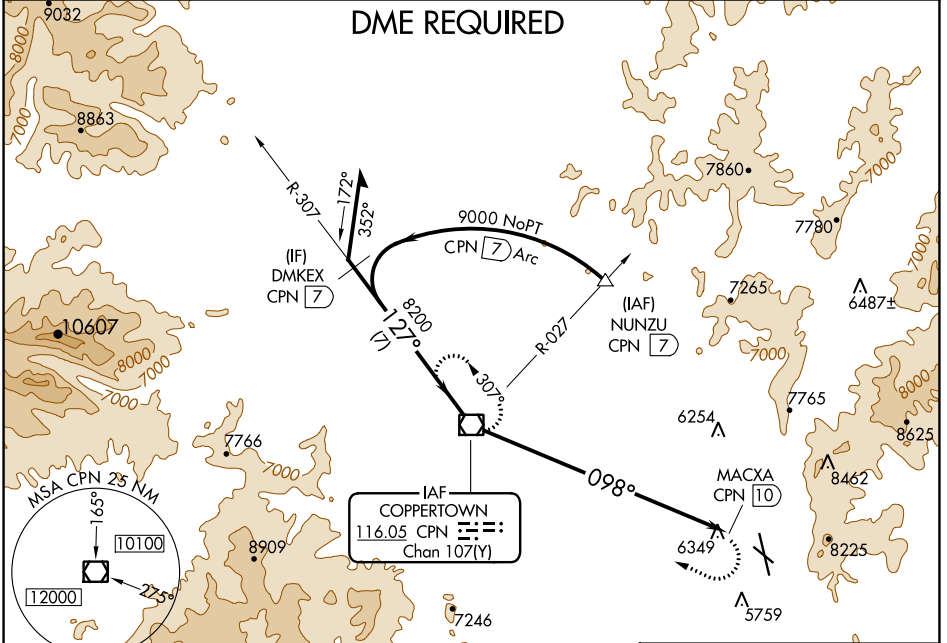
NW-1, 22 FEB 2024 to 21 MAR 2024

VOR/DME CPN 116.05 Chan 107(Y)	APP CRS 098°	Rwy Idg TDZE Apt Elev N/A N/A 5551
--	------------------------	--

VOR-A
BERT MOONEY (BTM)

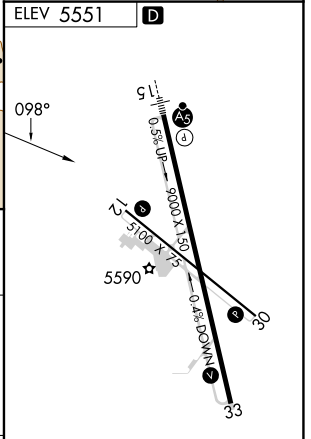
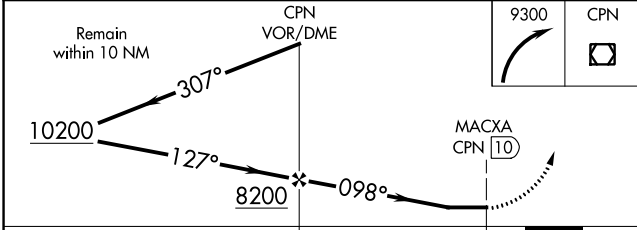
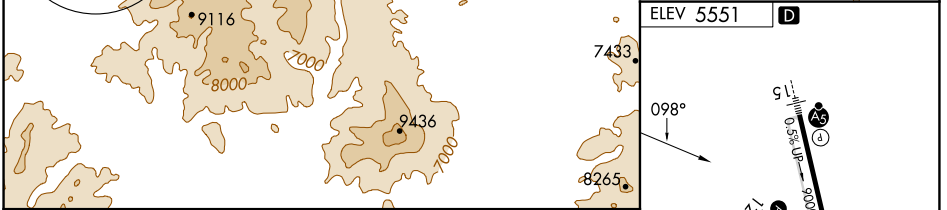
DME required. Circling NA northeast of Rwy 15-33.	MISSED APPROACH: Climbing right turn to 9300 direct CPN VOR/DME and hold.
--	---

ASOS 135.175	SALT LAKE CENTER 132.4 338.3	UNICOM 123.0(CTAF)
------------------------	--	------------------------------



NW-1, 22 FEB 2024 to 21 MAR 2024

NW-1, 22 FEB 2024 to 21 MAR 2024



CATEGORY	A	B	C	D
CIRCLING	7120-1¼ 1569 (1600-1¼)	7120-1½ 1569 (1600-1½)	7120-3 1569 (1600-3)	7140-3 1589 (1600-3)

REIL Rwy 12 and 30
MRL Rwy 12-30 and 15-33