

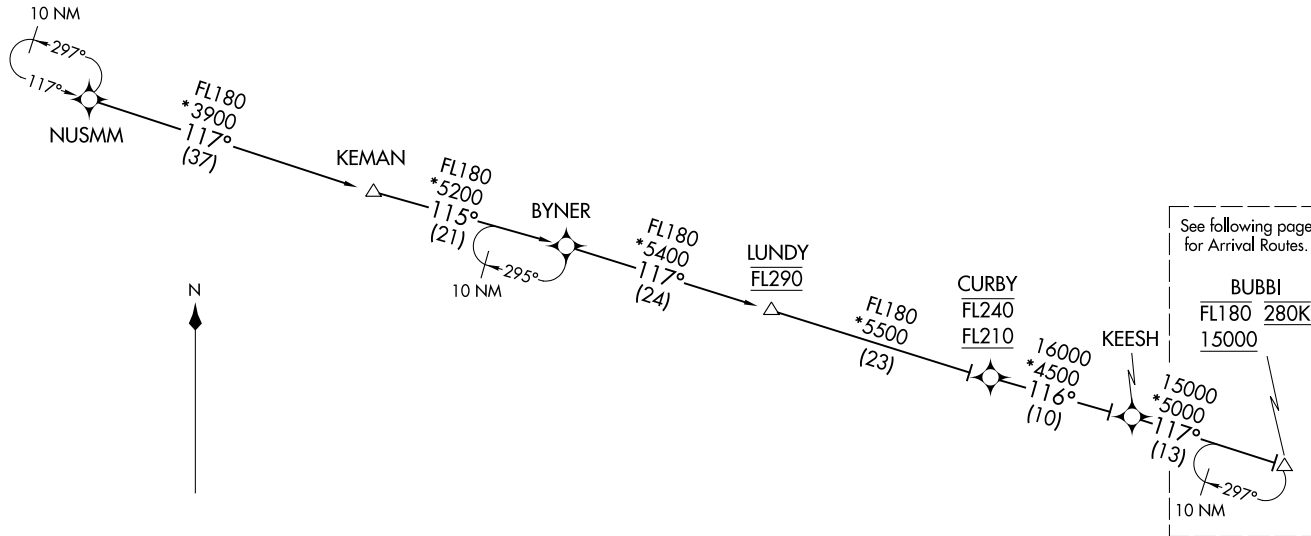
ANTHM THREE ARRIVAL (RNAV) (BUBBI.ANTHM3) 31MART6

Transition Routes

BALTIMORE, MARYLAND

POTOMAC APP CON  
133.85 254.25  
BWI D-ATIS  
115.1 127.8

- NOTE: RADAR required
- NOTE: RNAV 1.
- NOTE: DME/DME/IRU or GPS required.
- NOTE: Turbojet aircraft only.
- NOTE: Prohibited area (P56) 1.5 NM north of DCA avoid surface to 18000 MSL.
- NOTE: ARTCC will issue landing direction assignment (east or west). Potomac TRACON will issue runway assignments.



KEESH TRANSITION (KEESH.ANTHM3)  
 KEMAN TRANSITION (KEMAN.ANTHM3)  
 NUSMM TRANSITION (NUSMM.ANTHM3)

(CONTINUED ON FOLLOWING PAGES)

NOTE: Chart not to scale.

(BUBBI.ANTHM3) 20198  
ANTHM THREE ARRIVAL (RNAV)

Transition Routes

BALTIMORE, MARYLAND

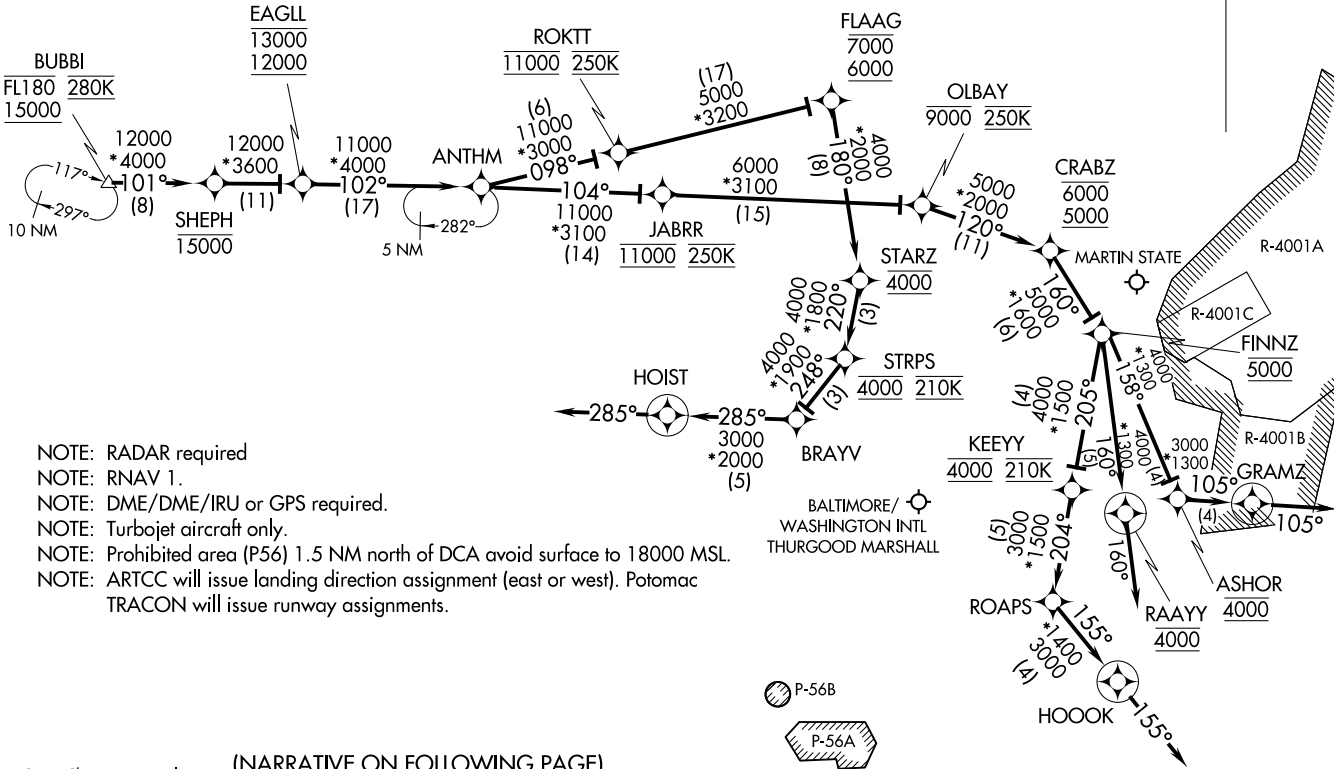
AL-804 (FAA)

ANTHM THREE ARRIVAL (RNAV) (BUBBI,ANTHM3) 31MARI6

Arrival Routes

BALTIMORE, MARYLAND

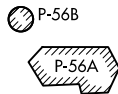
POTOMAC APP CON  
133.85 254.25  
BWI D-ATIS  
115.1 127.8



- NOTE: RADAR required
- NOTE: RNAV 1.
- NOTE: DME/DME/IRU or GPS required.
- NOTE: Turbojet aircraft only.
- NOTE: Prohibited area (P56) 1.5 NM north of DCA avoid surface to 18000 MSL.
- NOTE: ARTCC will issue landing direction assignment (east or west). Potomac TRACON will issue runway assignments.

(NARRATIVE ON FOLLOWING PAGE)

NOTE: Chart not to scale.



ANTHM THREE ARRIVAL (RNAV) (BUBBI,ANTHM3) 20199

Arrival Routes

BALTIMORE, MARYLAND

AL-804 (FAA)

ARRIVAL ROUTE DESCRIPTION

Landing BWI:

From BUBBI on track 101° to cross SHEPH at or below 15000, then on track 101° to cross EAGLL between 12000 and 13000, then on track 102° to cross ANTHM.

LANDING EAST: RWYS 10 and 15L/R: From ANTHM on track 098° to cross ROKTT at 11000 and at 250K, then on track 098° to cross FLAAG between 6000 and 7000, then on track 180° to cross STARZ at 4000, then on track 220° to cross STRPS at 4000 and at 210K, then on track 248° to BRAYV, then on track 285° to HOIST, then on heading 285° or as assigned by ATC.

Expect RADAR vectors to final approach course.

LANDING WEST: RWY 28: From ANTHM on track 104° to cross JABRR at 11000 and at 250K, then on track 104° to cross OLBAY at or below 9000 and at 250K, then on track 120° to cross CRABZ between 5000 and 6000, then on track 160° to cross FINNZ at 5000, then on track 158° to cross ASHOR at 4000, then on track 105° to GRAMZ, then on heading 105°.

Expect RADAR vectors to final approach course.

LANDING WEST: RWYS 33L/R: From ANTHM on track 104° to cross JABRR at 11000 and at 250K, then on track 104° to cross OLBAY at or below 9000 and at 250K, then on track 120° to cross CRABZ between 5000 and 6000, then on track 160° to cross FINNZ at 5000, then on track 205° to cross KEEYY at 4000 and at 210K, then on track 204° to ROAPS, then on track 155° to HOOK, then on heading 155°.

Expect RADAR vectors to final approach course.

LANDING MTN: From BUBBI on track 101° to cross SHEPH at or below 15000, then on track 101° to cross EAGLL between 12000 and 13000, then on track 102° to ANTHM, then on track 104° to cross JABRR at 11000 and at 250K, then on track 104° to cross OLBAY at or below 9000 and at 250K, then on track 120° to cross CRABZ between 5000 and 6000, then on track 160° to cross FINNZ at 5000, then on track 160° to cross RAAYY at 4000, then on heading 160°.

Expect RADAR vectors to final approach course.

NE-3, 22 FEB 2024 to 21 MAR 2024

NE-3, 22 FEB 2024 to 21 MAR 2024

**MIDY TWO ARRIVAL (RNAV)**  
 (MIDY.MIDY2) 10DECTS

POTOMAC APP CON  
 133.75 254.35  
 BWI D-ATIS  
 115.1 127.8

NOTE: RADAR required.  
 NOTE: RNAV 1.  
 NOTE: DME/DME/IRU or GPS required.  
 NOTE: Turbopjet aircraft only.

**ARRIVAL ROUTE DESCRIPTION**

**LAFLN TRANSITION (LAFLN.MIDY2)**

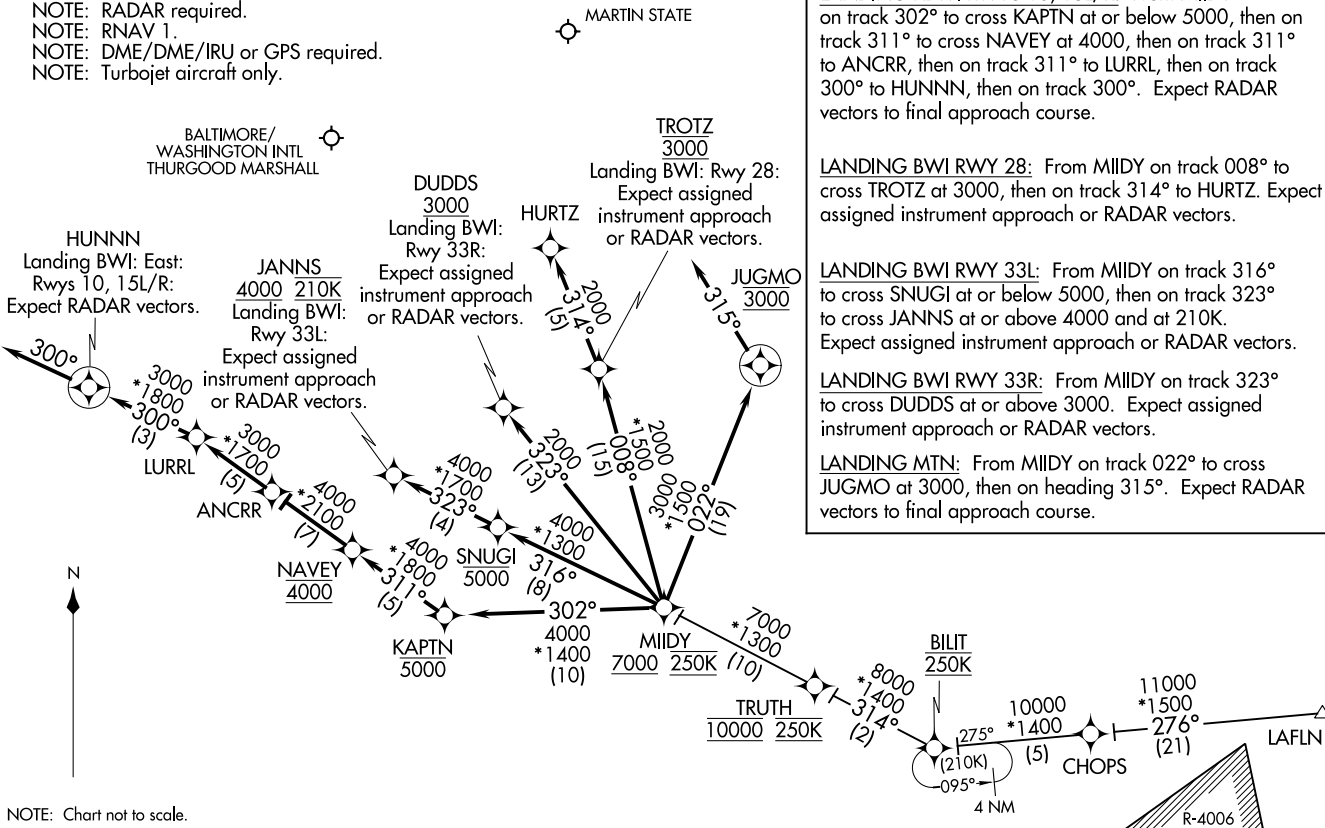
**LANDING KBWI RWYS 10, 15L/R:** From MIDY on track 302° to cross KAPTN at or below 5000, then on track 311° to cross NAVEY at 4000, then on track 311° to ANCRRL, then on track 311° to LURRL, then on track 300° to HUNNN, then on track 300°. Expect RADAR vectors to final approach course.

**LANDING BWI RWY 28:** From MIDY on track 008° to cross TROTZ at 3000, then on track 314° to HURTZ. Expect assigned instrument approach or RADAR vectors.

**LANDING BWI RWY 33L:** From MIDY on track 316° to cross SNUGI at or below 5000, then on track 323° to cross JANNS at or above 4000 and at 210K. Expect assigned instrument approach or RADAR vectors.

**LANDING BWI RWY 33R:** From MIDY on track 323° to cross DUDDS at or above 3000. Expect assigned instrument approach or RADAR vectors.

**LANDING MTN:** From MIDY on track 022° to cross JUGMO at 3000, then on heading 315°. Expect RADAR vectors to final approach course.



NOTE: Chart not to scale.

BALTIMORE, MARYLAND

**MIDY TWO ARRIVAL (RNAV)**  
 (MIDY.MIDY2) 23222

AL-804 (FAA)

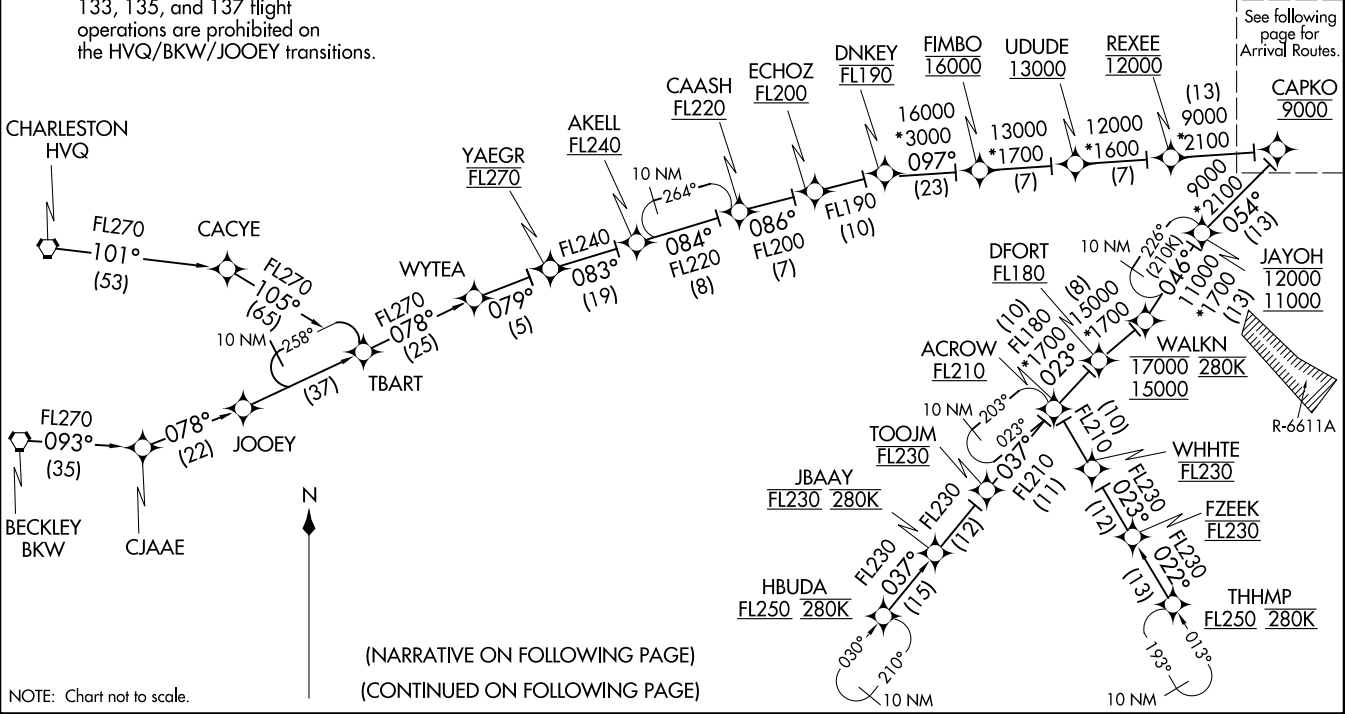
BALTIMORE, MARYLAND

RAVNN SIX ARRIVAL (RNAV) Transition Routes  
 (CAPKO.RAVNN6) 100DECI5  
 BALTIMORE, MARYLAND

POTOMAC APP CON  
 128.35 270.275  
 BWI D-ATIS  
 115.1 127.8

NOTE: RADAR required.  
 NOTE: RNAV 1.  
 NOTE: DME/DME/IRU or GPS required.  
 NOTE: Turbojet aircraft only.  
 NOTE: All part 91, 101, 103, 105, 125, 133, 135, and 137 flight operations are prohibited on the HVQ/BKW/JOOEY transitions.

BECKLEY TRANSITION (BKW.RAVNN6)  
 CHARLESTON TRANSITION (HVQ.RAVNN6)  
 HBUDA TRANSITION (HBUDA.RAVNN6): (ATC assigned only).  
 JOOEY TRANSITION (JOOEY.RAVNN6): (ATC assigned only).  
 THHMP TRANSITION (THHMP.RAVNN6)



RAVNN SIX ARRIVAL (RNAV) Transition Routes  
 (CAPKO.RAVNN6) 201.98  
 AL-804 (FAA)  
 BALTIMORE, MARYLAND

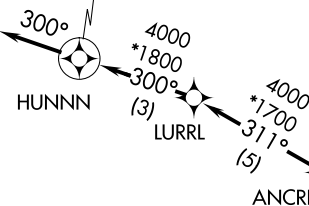
# RAVNN SIX ARRIVAL (RNAV) Arrival Routes

POTOMAC APP CON  
128.35 270.275  
BWI D-ATIS  
115.1 127.8

HUNNN

Landing BWI East:  
Rwys 10, 15L/R:

Expect RADAR vectors to final approach course after HUNNN.



CARROLL COUNTY RGNL/  
JACK B POAGE FLD

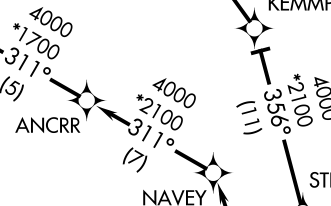
MARTIN STATE

BALTIMORE/  
WASHINGTON INTL  
THURGOOD MARSHALL



JETNA

Landing KBWI West: Rwys 28,  
33L/R: Expect assigned  
instrument approach or RADAR  
vectors to final approach  
course after JETNA.



- NOTE: RADAR required.
- NOTE: RNAV 1.
- NOTE: DME/DME/IRU or GPS required.
- NOTE: Turbojet aircraft only.



NOTE: Chart not to scale.

## ARRIVAL ROUTE DESCRIPTION

From CAPKO on track 072° to cross RAVNN at 6000.

LANDING BWI RUNWAYS 10, 15L/R: From RAVNN on track 352° to NAVAY, then on track 311° to ANCRR, then on track 311° to LURRL, then on track 300° to HUNNN, then on track 300°.  
Expect RADAR vectors to final approach course.

LANDING BWI RUNWAYS 28, 33L/R: From RAVNN on track 014° to JETNA, then on track 014°.  
Expect assigned instrument approach or RADAR vectors to final approach course.

LANDING DMW: From CAPKO on track 072° to cross RAVNN at 6000, then on track 359° to STRGL, then on track 356° to KEMMP, then on track 335° to SLOAF, then on heading 354°.  
Expect RADAR vectors to final approach course.

LANDING MTN: From CAPKO on track 072° to cross RAVNN at 6000, then on track 072° to AMRTN, then on track 073°. Expect RADAR vectors to final approach course.

NE-3, 22 FEB 2024 to 21 MAR 2024

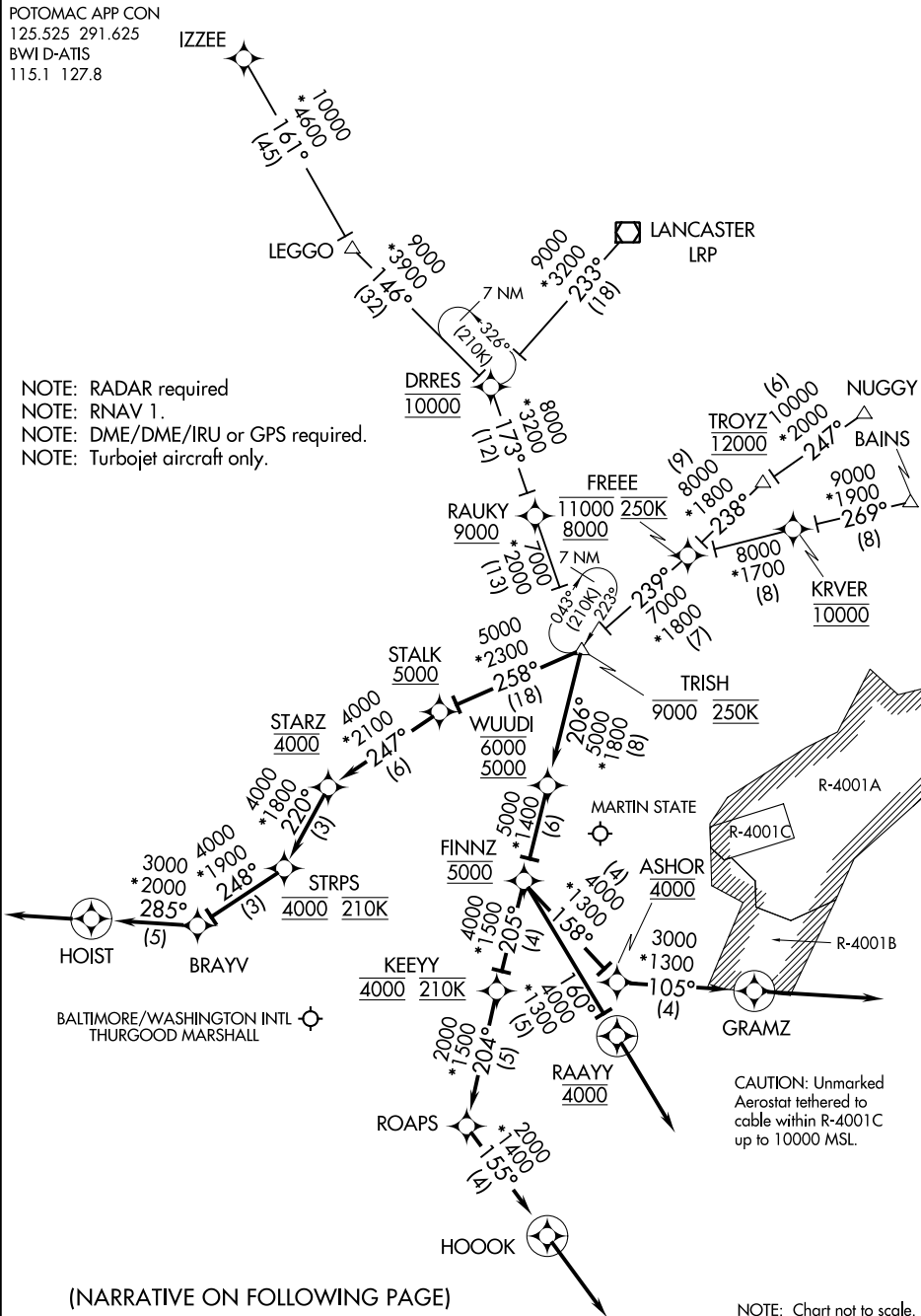
NE-3, 22 FEB 2024 to 21 MAR 2024

# TRISH THREE ARRIVAL (RNAV)

BALTIMORE, MARYLAND

POTOMAC APP CON  
125.525 291.625  
BWI D-ATIS  
115.1 127.8

- NOTE: RADAR required
- NOTE: RNAV 1.
- NOTE: DME/DME/IRU or GPS required.
- NOTE: Turbojet aircraft only.



NE-3, 22 FEB 2024 to 21 MAR 2024

NE-3, 22 FEB 2024 to 21 MAR 2024

(NARRATIVE ON FOLLOWING PAGE)

NOTE: Chart not to scale.

# TRISH THREE ARRIVAL (RNAV)

BALTIMORE, MARYLAND

ARRIVAL ROUTE DESCRIPTION

BAINS TRANSITION (BAINS.TRISH3):

IZZEE TRANSITION (IZZEE.TRISH3):

LANCASTER TRANSITION (LRP.TRISH3):

NUGGY TRANSITION (NUGGY.TRISH3):

LANDING BWI:

LANDING RWYS 10, 15L, 15R: From TRISH on track 258° to cross STALK at or above 5000, then on track 247° to cross STARZ at 4000, then on track 220° to cross STRPS at 4000 and at 210K, then on track 248° to BRAYV, then on track 285° to HOIST, then on heading 285° or as assigned by ATC. Expect RADAR vectors to final approach course.

LANDING RWY 28: From TRISH on track 206° to cross WUUDI between 5000 and 6000, then on track 206° to cross FINNZ at 5000, then on track 158° to cross ASHOR at 4000, then on track 105° to GRAMZ, then on heading 105° or as assigned by ATC. Expect RADAR vectors to final approach course.

LANDING RWYS 33L/R: From TRISH on track 206° to cross WUUDI between 5000 and 6000, then on track 206° to cross FINNZ at 5000, then on track 205° to cross KEEYY at 4000 and at 210K, then on track 204° to ROAPS, then on track 155° to HOOK, then on track 155°. Expect RADAR vectors to final approach course.

LANDING MTN: From TRISH on track 206° to cross WUUDI between 5000 and 6000, then on track 206° to cross FINNZ at 5000, then on track 160° to cross RAYY at 4000, then on heading 160° or as assigned by ATC. Expect RADAR vectors to final approach course.

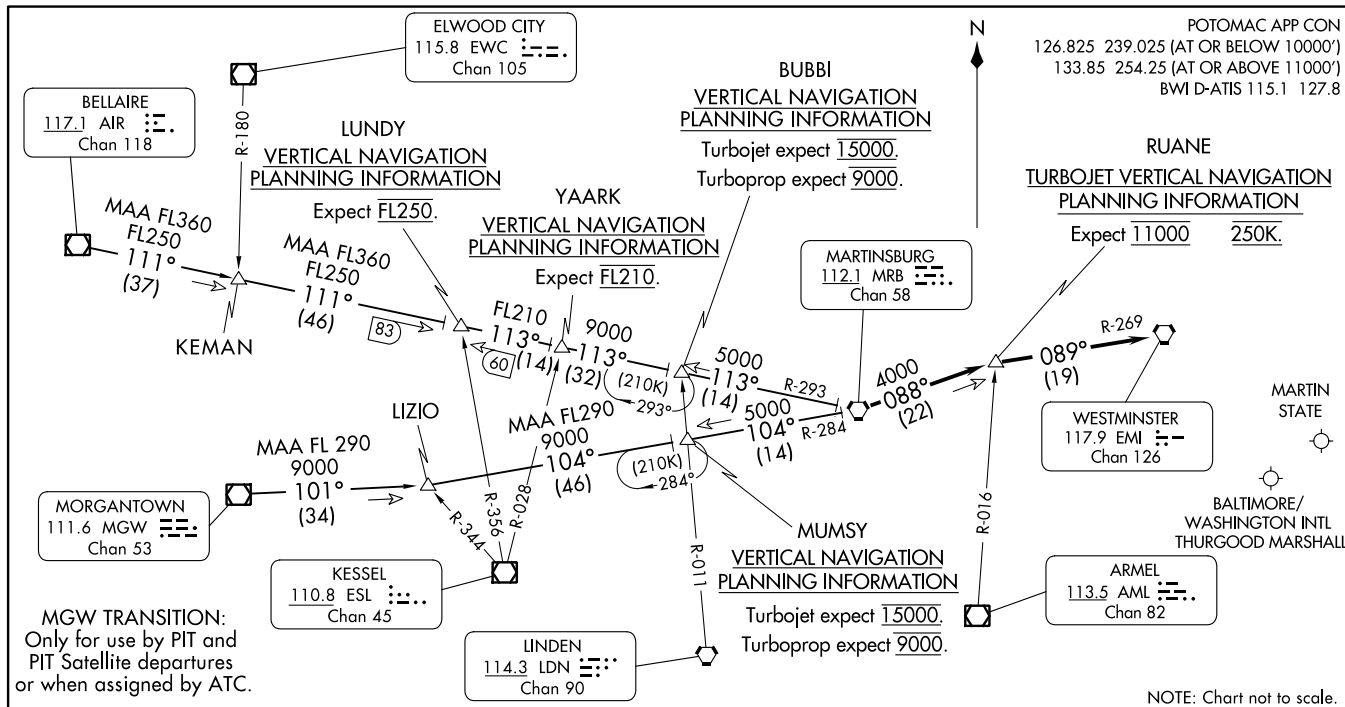
NE-3, 22 FEB 2024 to 21 MAR 2024

NE-3, 22 FEB 2024 to 21 MAR 2024



(MRB,EM17) 05DEC19

WESTMINSTER SEVEN ARRIVAL



**MGW TRANSITION:**  
Only for use by PIT and  
PIT Satellite departures  
or when assigned by ATC.

**ARRIVAL ROUTE DESCRIPTION**

**BELLAIRE TRANSITION (AIR.EM17):** From over AIR VOR/DME on AIR R-111 to LUNDY, then on MRB VORTAC R-293 to MRB VORTAC. Thence . . .

**KEMAN TRANSITION (KEMAN.EM17):** From over KEMAN on AIR R-111 to LUNDY, then on MRB VORTAC R-293 to MRB VORTAC. Thence . . .

**MORGANTOWN TRANSITION (MGW.EM17):** From over MGW VOR/DME on MGW R-101 to LIZIO, then on MRB VORTAC R-284 to MRB VORTAC. Thence . . .

. . . . from MRB on MRB R-088 to RUANE, then on EMI VORTAC R-269 to EMI. Expect vectors to final approach course after EMI.

WESTMINSTER SEVEN ARRIVAL

(MRB,EM17) 23334

AL-804 (FAA)

BALTIMORE, MARYLAND