

APP CRS 280°	Rwy ldg TDZE Apt Elev	N/A N/A 1378
------------------------	-----------------------------	---

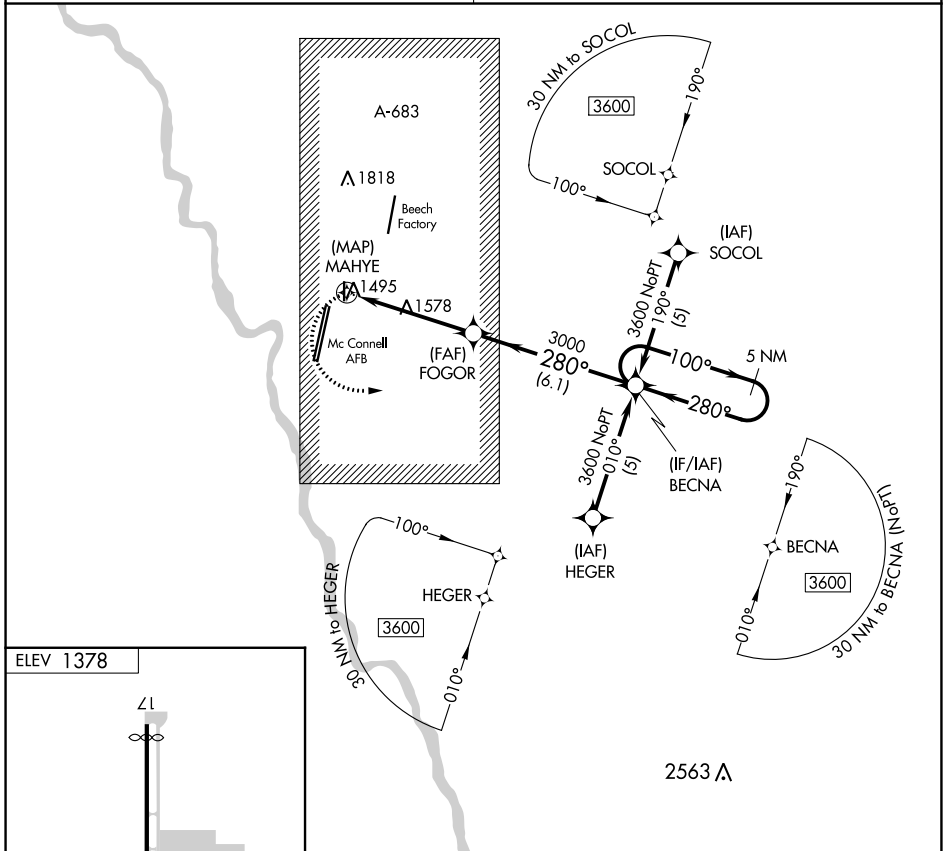
RNAV (GPS)-D
CESSNA ACFT FLD (CEA)

▲ NA DME/DME RNP-0.3 NA. Procedure NA at night. Use Wichita Dwight D Eisenhower Nil altimeter setting; when not received, use Colonel James Jabara altimeter setting.

MISSED APPROACH: Climbing left turn to 3600 direct BECNA and hold.

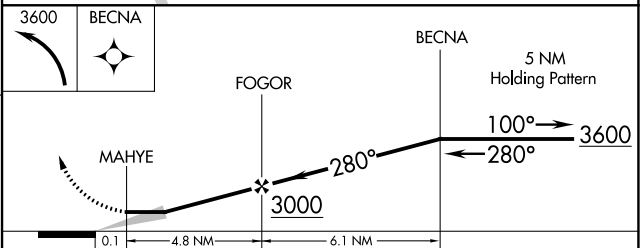
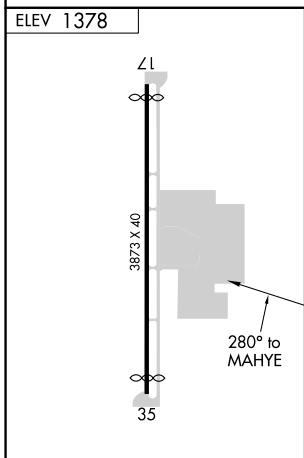
WICHITA APP CON
134.8 269.1

CTAF
122.9



NC-2, 22 FEB 2024 to 21 MAR 2024

NC-2, 22 FEB 2024 to 21 MAR 2024



CATEGORY	A	B	C	D
CIRCLING	1920-1	542 (600-1)	1960-1½ 582 (600-1½)	NA

VORTAC ICT 113.8 Chan 85	APP CRS 283°	Rwy Idg TDZE Apt Elev	N/A N/A 1378
--	------------------------	-----------------------------	---

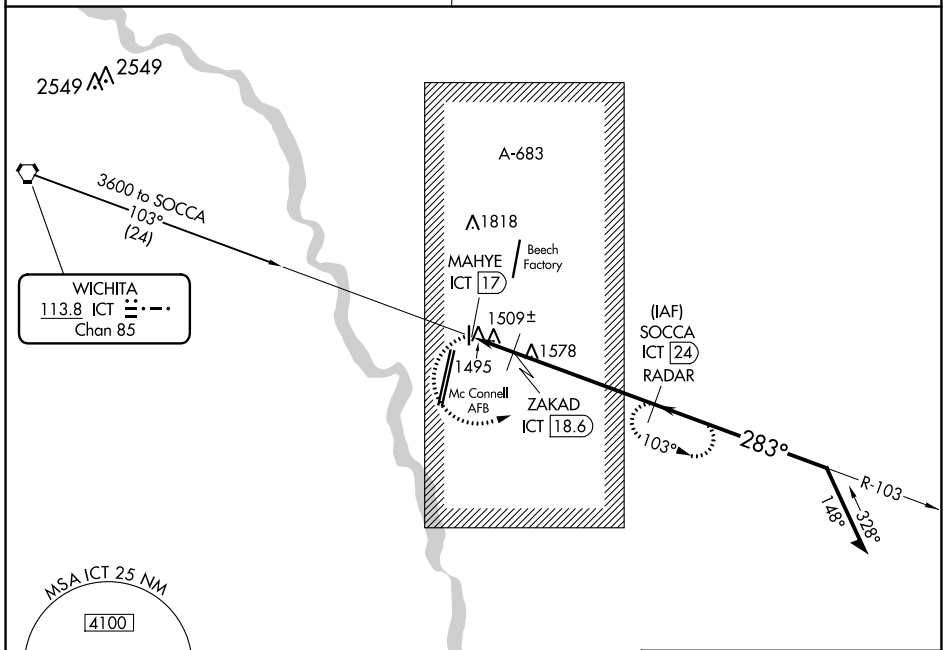
VOR-C
CESSNA ACFT FLD (CEA)

NA Use Wichita Dwight D Eisenhower Ntl altimeter setting. Procedure not authorized at night. DME or RADAR required.

MISSED APPROACH: Climbing left turn to 3600 via ICT R-103 to SOCCA 24 DME/RADAR and hold.

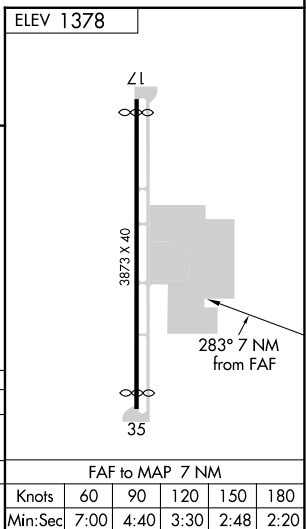
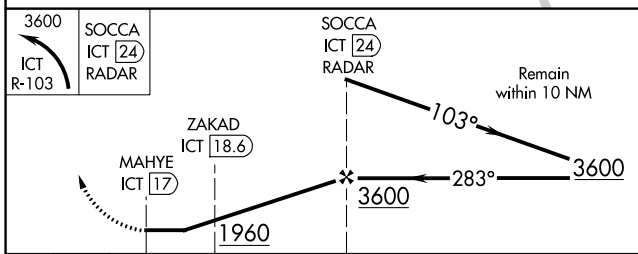
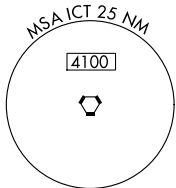
WICHITA APP CON
134.8 269.1

CTAF
122.9



NC-2, 22 FEB 2024 to 21 MAR 2024

NC-2, 22 FEB 2024 to 21 MAR 2024



CATEGORY	A	B	C	D
CIRCLING	1960-1	582 (600-1)	1960-1½ 582 (600-1½)	NA
ZAKAD FIX MINIMUMS				
CIRCLING	1840-1	462 (500-1)	1960-1½ 582 (600-1½)	NA

FAF to MAP 7 NM					
Knots	60	90	120	150	180
Min:Sec	7:00	4:40	3:30	2:48	2:20