

APP CRS	Rwy Idg	<b>7205</b>
<b>024°</b>	TDZE	<b>5918</b>
	Apt Elev	<b>5918</b>

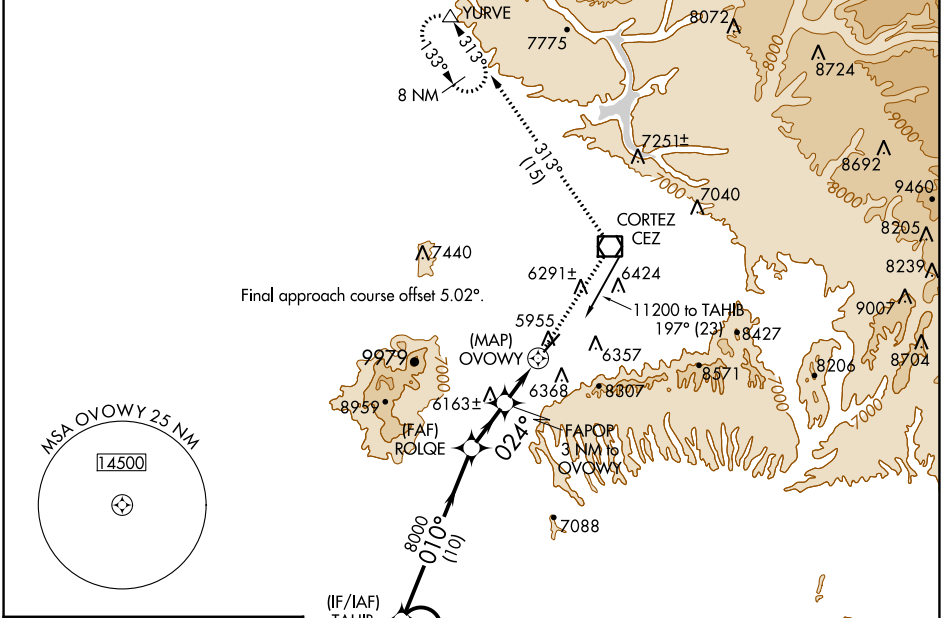
# RNAV (GPS) RWY 3

CORTEZ MUNI (CEZ)

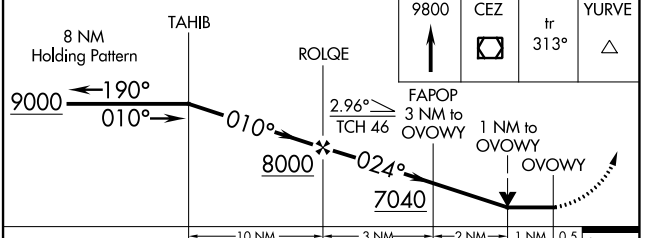
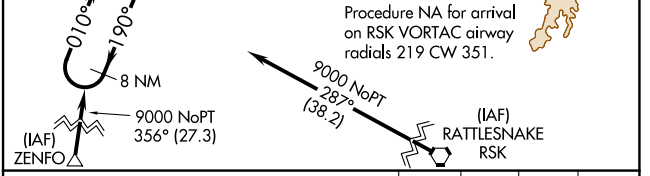
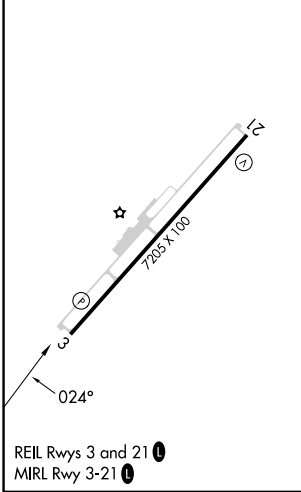
RNP APCH.
<b>▽</b> <b>▲</b>
Rwy 3 helicopter visibility reduction below ¾ SM NA.

MISSED APPROACH: Climb to 9800 direct CEZ VOR/DME and on track 313° to YURVE and hold.

ASOS <b>135.625</b>	DENVER CENTER <b>118.575 348.7</b>	UNICOM <b>122.8 (CTAF) 0</b>
------------------------	---------------------------------------	---------------------------------



ELEV 5918	<b>D</b>	TDZE 5918
-----------	----------	-----------



CATEGORY	A	B	C	D
LNAV MDA	6440-1	522 (600-1)	6440-1½	522 (600-1½)

SW-1, 22 FEB 2024 to 21 MAR 2024

SW-1, 22 FEB 2024 to 21 MAR 2024

APP CRS	Rwy Idg	<b>7205</b>
<b>210°</b>	TDZE	<b>5913</b>
	Apt Elev	<b>5918</b>

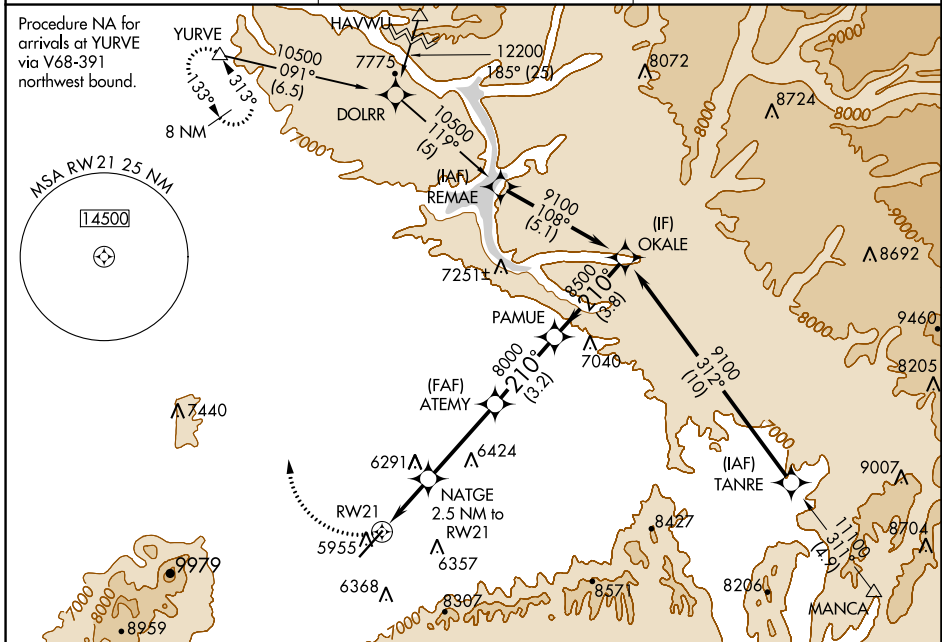
# RNAV (GPS) Y RWY 21

CORTEZ MUNI (C/EZ)

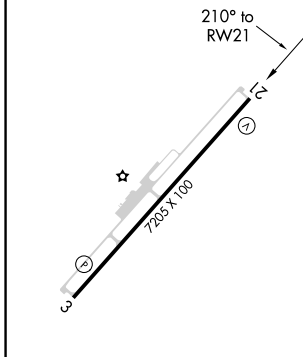
**▼** DME/DME RNP-0.3 NA. When VGSI inop, procedure NA at night. Circling NA southeast of Rwy 3-21.

**▲** MISSED APPROACH: Climbing right turn to 9800 direct YURVE and hold.

ASOS <b>135.625</b>	DENVER CENTER <b>118.575 348.7</b>	UNICOM <b>122.8 (CTAF)</b> <b>📻</b>
------------------------	---------------------------------------	--

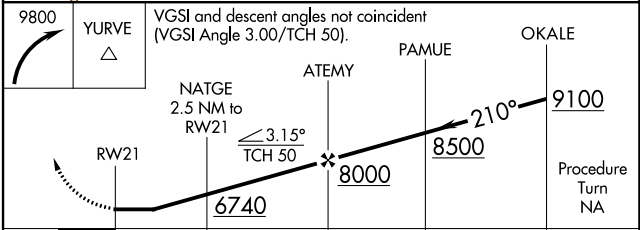


ELEV 5918	<b>D</b>	TDZE 5913
-----------	----------	-----------



REIL Rwys 3 and 21 <b>📻</b>
MIRL Rwy 3-21 <b>📻</b>

**CAUTION:** Highway lights located between FAF and runway are aligned with approach area.



CATEGORY	A	B	C	D
LNAV MDA	6560-1	647 (700-1)	6560-1¾ 647 (700-1¾)	6560-2 647 (700-2)
CIRCLING	6560-1 642 (700-1)	6680-2 762 (800-2)	6800-2¾ 882 (900-2¾)	7060-3 1142 (1200-3)

SW-1, 22 FEB 2024 to 21 MAR 2024

SW-1, 22 FEB 2024 to 21 MAR 2024

WAAS CH <b>99699</b> W21A	APP CRS <b>210°</b>	Rwy Idg TDZE Apt Elev	<b>7205</b> <b>5913</b> <b>5918</b>
---------------------------------	------------------------	-----------------------------	---

# RNAV (GPS) Z RWY 21

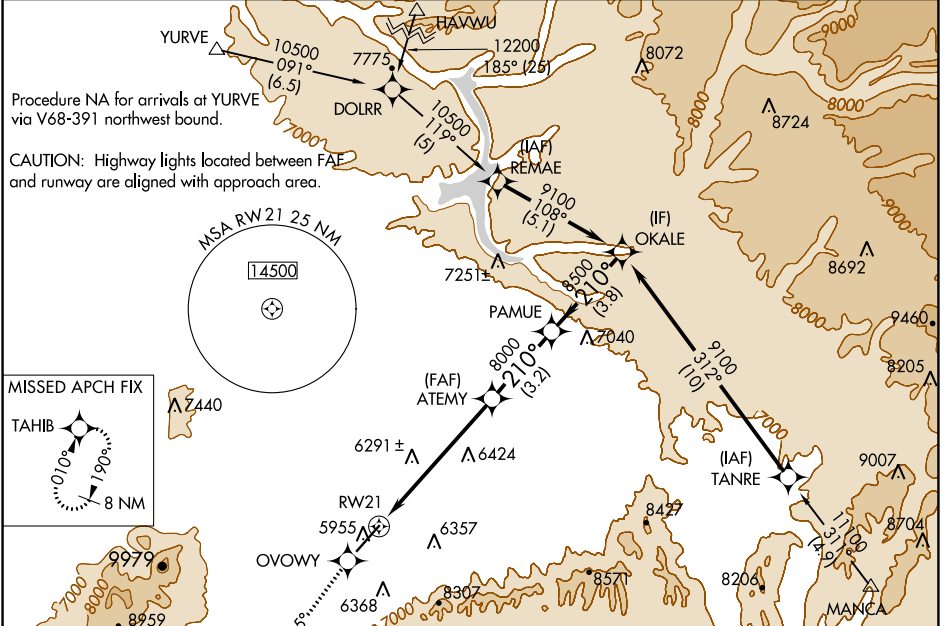
CORTEZ MUNI (C/EZ)

RNP APCH.

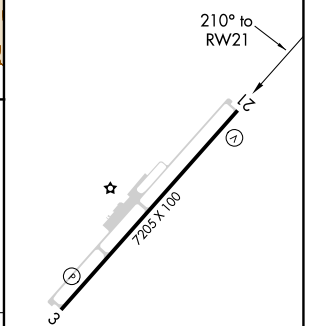
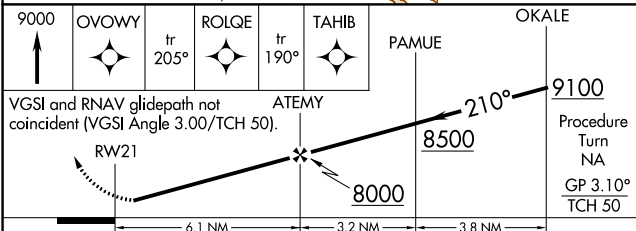
**⚠** When VGSI inop, procedure NA at night.

MISSED APPROACH: Climb to 9000 direct OVOWY and via 205° track to ROLQE and via 190° track to TAHIB and hold.

ASOS <b>135.625</b>	DENVER CENTER <b>118.575 348.7</b>	UNICOM <b>122.8 (CTAF)</b>
------------------------	---------------------------------------	-------------------------------



ELEV 5918	<b>D</b>	TDZE 5913
-----------	----------	-----------



CATEGORY	A	B	C	D
LPV DA	6215-1		302 (300-1)	
LNAV/VNAV DA	NA			
LNAV MDA	7140-1¼ 1227 (1300-1¼)	7140-1½ 1227 (1300-1½)	7140-3	1227 (1300-3)

REIL Rwy 3 and 21 **Ⓛ**  
MIRL Rwy 3-21 **Ⓛ**

SW-1, 22 FEB 2024 to 21 MAR 2024

SW-1, 22 FEB 2024 to 21 MAR 2024

VOR/DME CEZ <b>114.35</b> Chan <b>90(Y)</b>	APP CRS <b>196°</b>	Rwy Idg TDZE Apt Elev	<b>7205</b> <b>5913</b> <b>5918</b>
---	------------------------	-----------------------------	---

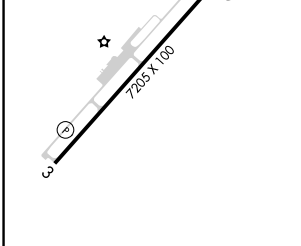
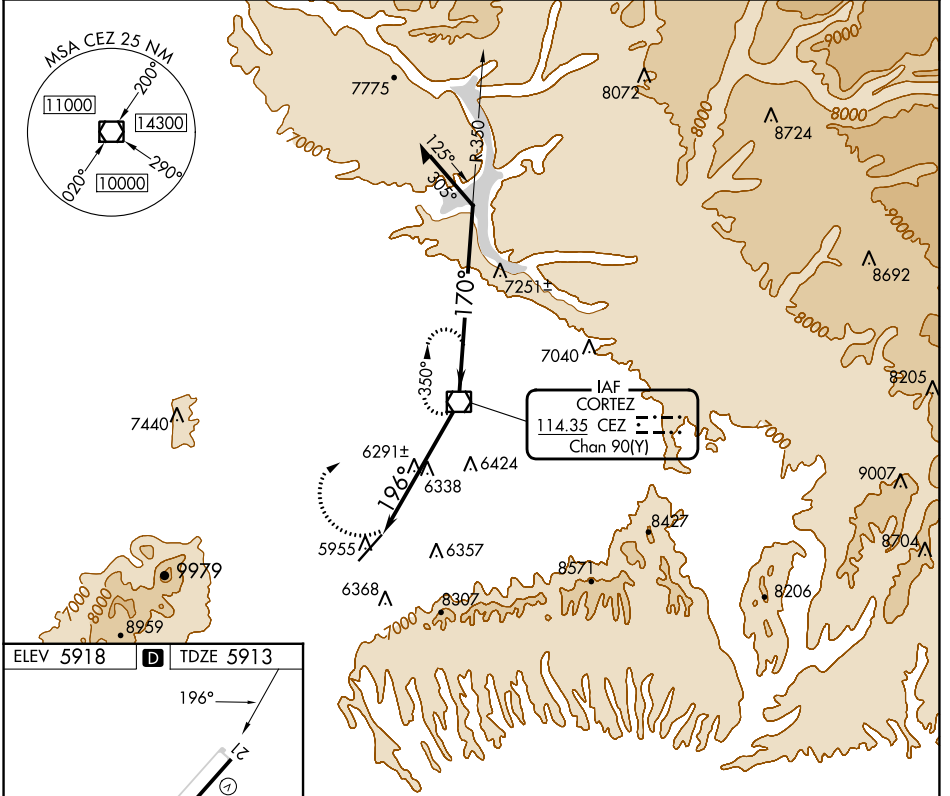
# VOR RWY 21

CORTEZ MUNI (C/EZ)

**CAUTION:** Highway lights located between facility and runway are aligned with approach area. Rwy 21 helicopter visibility reduction below 3/4 SM NA. Circling NA southeast of Rwy 3-21.

**MISSED APPROACH:** Climbing right turn to 9800 direct to CEZ VOR/DME and hold.

ASOS <b>135.625</b>	DENVER CENTER <b>118.575 348.7</b>	UNICOM <b>122.8 (CTAF) 0</b>
------------------------	---------------------------------------	---------------------------------

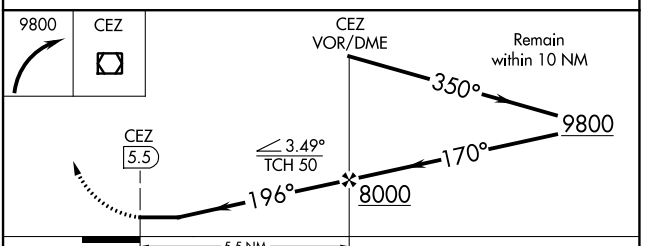


ELEV 5918 **D** TDZE 5913

REL Rws 3 and 21 **0**  
MIRL Rwy 3-21 **0**

FAF to MAP 5.5 NM

Knots	60	90	120	150	180
Min:Sec	5:30	3:40	2:45	2:12	1:50



CATEGORY	A	B	C	D
S-21	6660-1 747 (800-1)	6660-1 1/4 747 (800-1 1/4)	6660-2 747 (800-2)	6660-2 1/4 747 (800-2 1/4)
CIRCLING	6660-1 742 (800-1)	6680-1 1/4 762 (800-1 1/4)	6800-2 3/4 882 (900-2 3/4)	7060-3 1142 (1200-3)

SW-1, 22 FEB 2024 to 21 MAR 2024

SW-1, 22 FEB 2024 to 21 MAR 2024