

APP CRS	Rwy Idg	4302
239°	TDZE	700
	Apt Elev	704

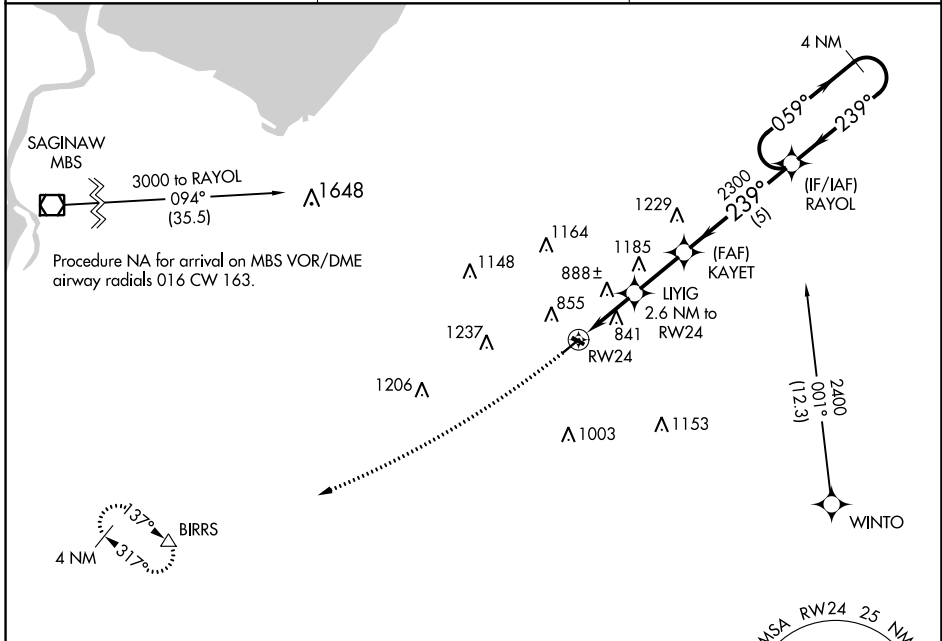
RNAV (GPS) RWY 24

TUSCOLA AREA (CFS)

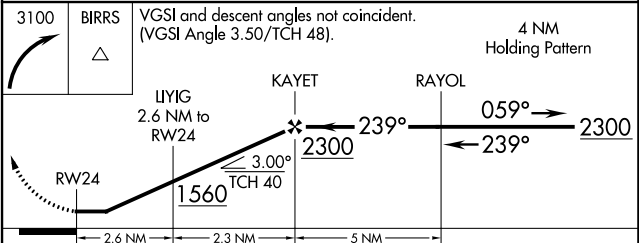
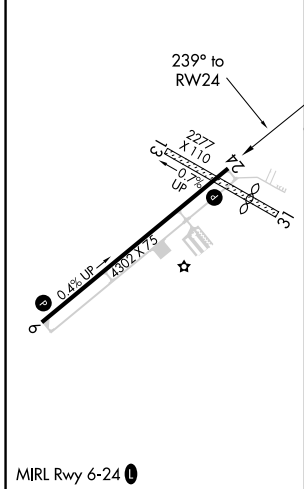
▼ Circling NA to Rwy 13 and 31.
 Helicopter visibility reduction below 1 SM NA.
 DME/DME RNP-0.3 NA. Procedure NA at night.

MISSED APPROACH: Climbing right turn to 3100 direct BIRRS and hold.

AWOS-3 119.275	GREAT LAKES APP CON ★ 120.95 235.625	UNICOM 123.0 (CTAF) 📞
--------------------------	--	--



ELEV 704	TDZE 700
----------	----------



CATEGORY	A	B	C	D
LNAV MDA	1140-1	440 (500-1)	1140-1¼ 440 (500-1¼)	NA
📍 CIRCLING	1200-1	496 (500-1)	1220-1½ 516 (600-1½)	NA

EC-1, 22 FEB 2024 to 21 MAR 2024

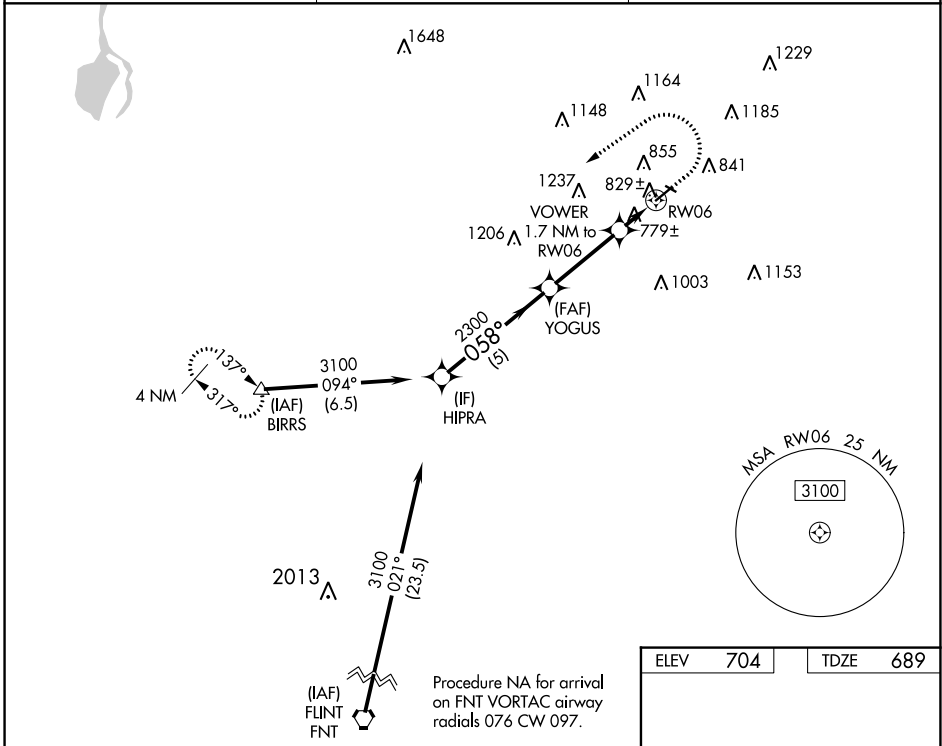
EC-1, 22 FEB 2024 to 21 MAR 2024

WAAS CH 56441 W06A	APP CRS 058°	Rwy Idg TDZE Apt Elev	4302 689 704
--	------------------------	-----------------------------	---

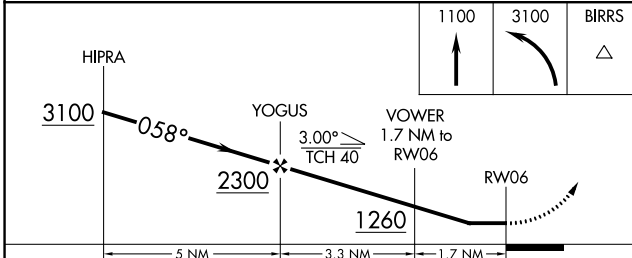
RNAV (GPS) RWY 6

TUSCOLA AREA (CFS)

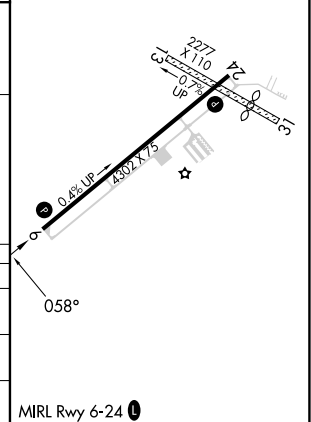
RNP APCH - GPS.		MISSED APPROACH: Climb to 1100 then climbing left turn to 3100 direct BIRRS and hold.
<p>▼ Circling NA to Rwy 13 and 31. Rwy 6 helicopter visibility reduction below 1 SM NA. Procedure NA at night.</p>		
AWOS-3 119.275	GREAT LAKES APP CON★ 120.95 235.625	UNICOM 123.0 (CTAF) ①



ELEV	704	TDZE	689
------	-----	------	-----



CATEGORY	A	B	C	D
LP MDA	1040-1 351 (400-1)		NA	NA
LNAV MDA	1080-1	391 (400-1)	1080-1¼ 391 (400-1¼)	NA
C CIRCLING	1200-1	496 (500-1)	1220-1½ 516 (600-1½)	NA



EC-1, 22 FEB 2024 to 21 MAR 2024

EC-1, 22 FEB 2024 to 21 MAR 2024

CARO, MICHIGAN

AL-6375 (FAA)

22195

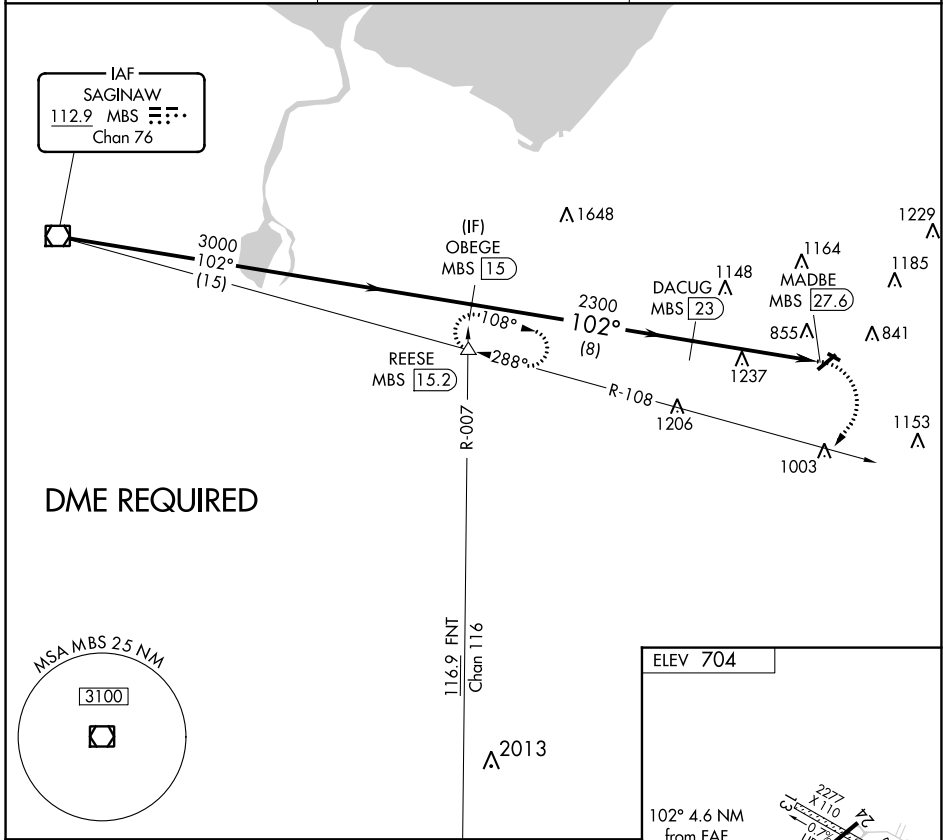
VOR/DME MBS 112.9 Chan 76	APP CRS 102°	Rwy Idg TDZE Apt Elev N/A N/A 704
---	------------------------	---

VOR-A

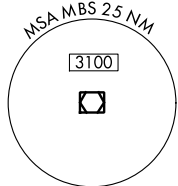
TUSCOLA AREA (CFS)

<p>▼ Circling NA to Rwy 13 and 31. DME required. Procedure NA at night.</p>	<p>MISSED APPROACH: Climbing right turn to 3000 on heading 220° and on MBS VOR/DME R-108 to REESE INT/15.2 DME and hold.</p>
--	---

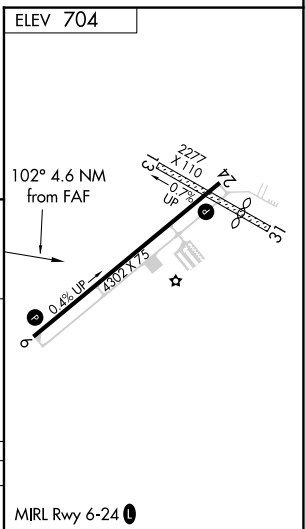
<p>AWOS-3 119.275</p>	<p>GREAT LAKES APP CON ★ 120.95 235.625</p>	<p>UNICOM 123.0 (CTAF) ①</p>
----------------------------------	--	---



DME REQUIRED



	<p>MBS VOR/DME 3000</p>	<p>OBEGE MBS 15</p>	<p>3000 hdg 220°</p>	<p>REESE MBS R-108</p>
	<p>3000</p>	<p>3000</p>	<p>2300</p>	<p>MADBE MBS 27.6</p>
	15 NM	8 NM	4.6 NM	
CATEGORY	A	B	C	D
① CIRCLING	1240-1	536 (600-1)	1240-1½ 536 (600-1½)	NA



EC-1, 22 FEB 2024 to 21 MAR 2024

EC-1, 22 FEB 2024 to 21 MAR 2024

CARO, MICHIGAN
Amdt 7 24MAY18

43°28'N-83°27'W

TUSCOLA AREA (CFS)

VOR-A