

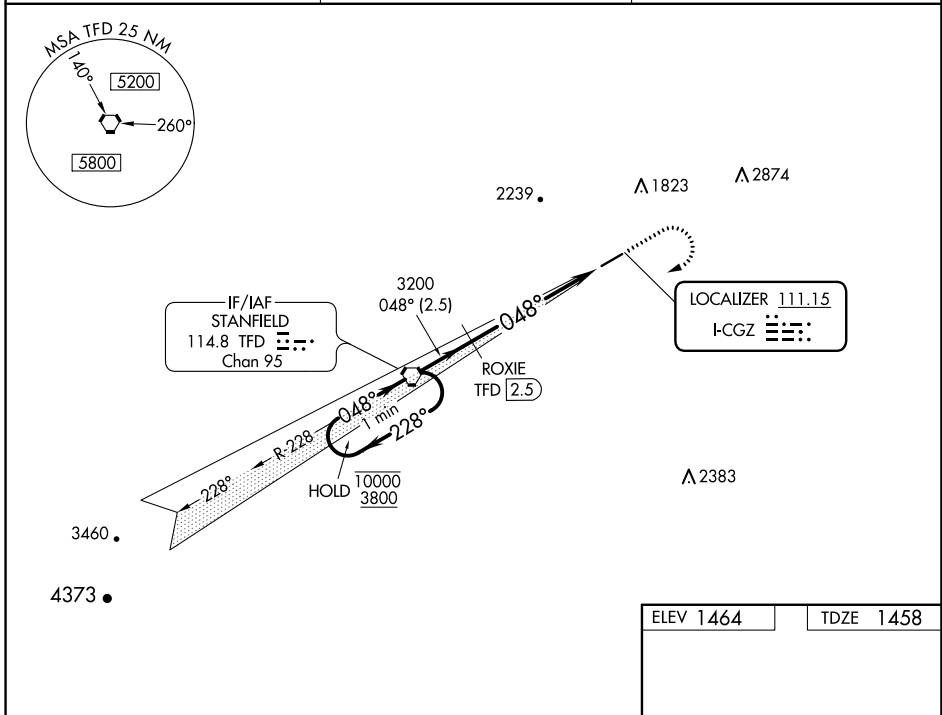
LOC I-CGZ 111.15	APP CRS 048°	Rwy Idg TDZE Apt Elev	5200 1458 1464
----------------------------	------------------------	-----------------------------	---

ILS or LOC RWY 5

CASA GRANDE MUNI (CGZ)

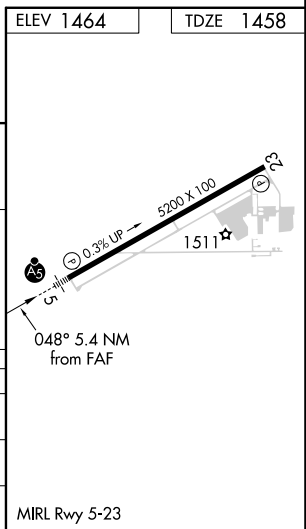
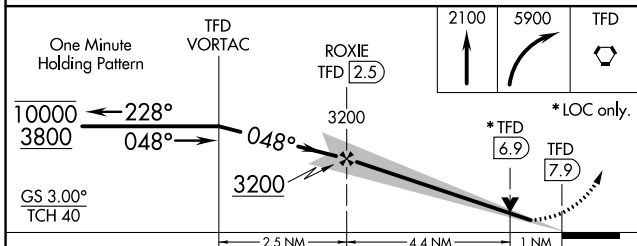
DME required for LOC only.		MALSR 	MISSED APPROACH: Climb to 2100 then climbing right turn to 5900 direct STANFIELD VORTAC and hold. Continue climb in hold to 5900.
NA	Circling NA for Cat C and D northwest of Rwy 5-23. Autopilot coupled approach NA below 1650. DME from TFD VORTAC. Simultaneous reception of I-CGZ and TFD DME required. For inop ALS, increase S-LOC 5 Cat C/D visibility to 1 SM.		

AWOS-3PT 132.175	ALBUQUERQUE CENTER 125.4 269.3	UNICOM 122.7 (CTAF) 0
----------------------------	--	---------------------------------



SW-4, 22 FEB 2024 to 21 MAR 2024

SW-4, 22 FEB 2024 to 21 MAR 2024



CATEGORY	A	B	C	D
S-ILS 5	1708-1/2		250 (300-1/2)	
S-LOC 5	1800-1/2	342 (400-1/2)	1800-5/8	342 (400-5/8)
CIRCLING	1960-1	496 (500-1)	1960-1 1/2 496 (500-1 1/2)	2260-2 1/2 796 (800-2 1/2)

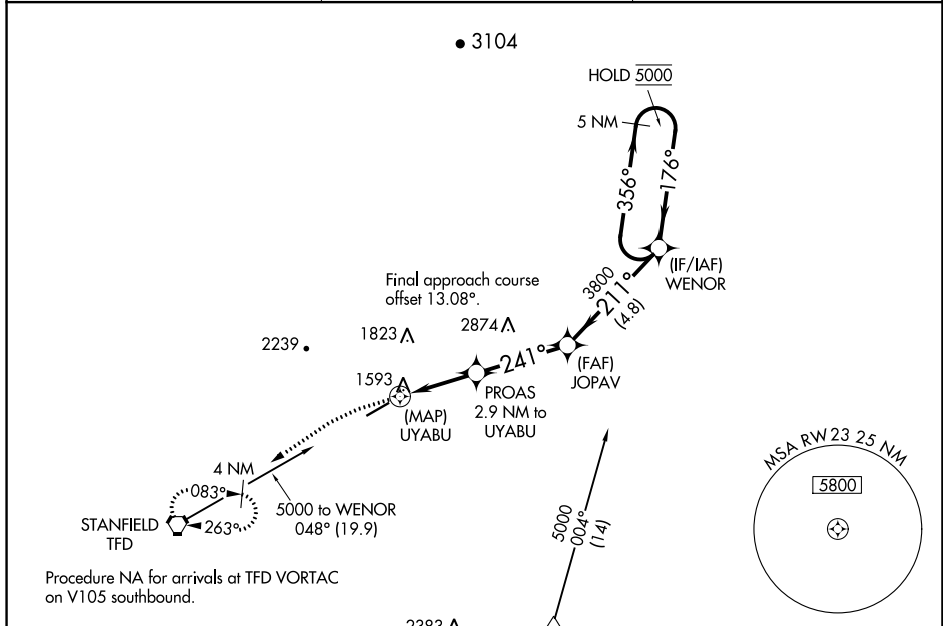
APP CRS	Rwy Idg	5200
241°	TDZE	1464
	Apt Elev	1464

RNAV (GPS) RWY 23

CASA GRANDE MUNI (CGZ)

RNP APCH-GPS.	MISSED APPROACH: Climbing left turn to 3500 direct TFD VORTAC and hold.
<p>▼ Rwy 23 helicopter visibility reduction below 3/4 SM NA.</p> <p>▲ Circling NA for Cat C and D northwest of Rwy 5-23.</p>	

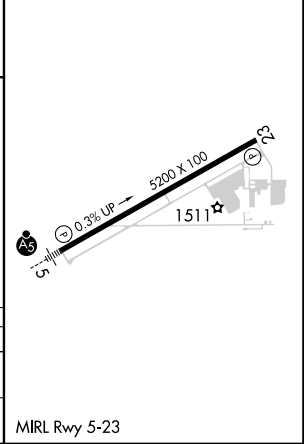
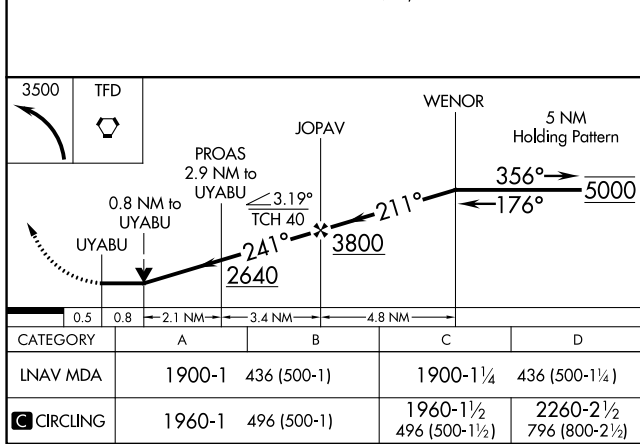
AWOS-3PT 132.175	ALBUQUERQUE CENTER 125.4 269.3	UNICOM 122.7 (CTAF) 0
----------------------------	--	---------------------------------



ELEV 1464	TDZE 1464
-----------	-----------

Procedure NA for arrivals at TFD VORTAC on V105 southbound.

Procedure NA for arrivals at TOTEC on V16/T306 southeast bound.



0.5	0.8	2.1 NM	3.4 NM	4.8 NM
CATEGORY	A	B	C	D
LNNAV MDA	1900-1	436 (500-1)	1900-1 1/4	436 (500-1 1/4)
C CIRCLING	1960-1	496 (500-1)	1960-1 1/2	2260-2 1/2
			496 (500-1 1/2)	796 (800-2 1/2)

MIRL Rwy 5-23

SW-4, 22 FEB 2024 to 21 MAR 2024

SW-4, 22 FEB 2024 to 21 MAR 2024

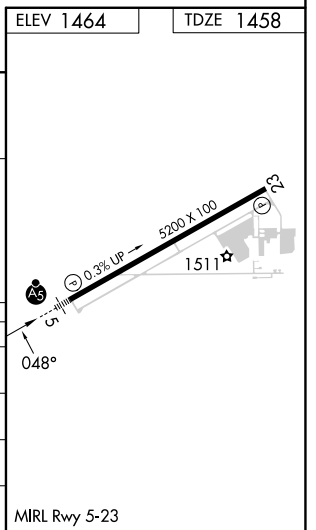
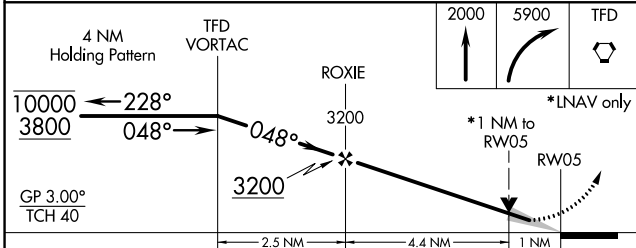
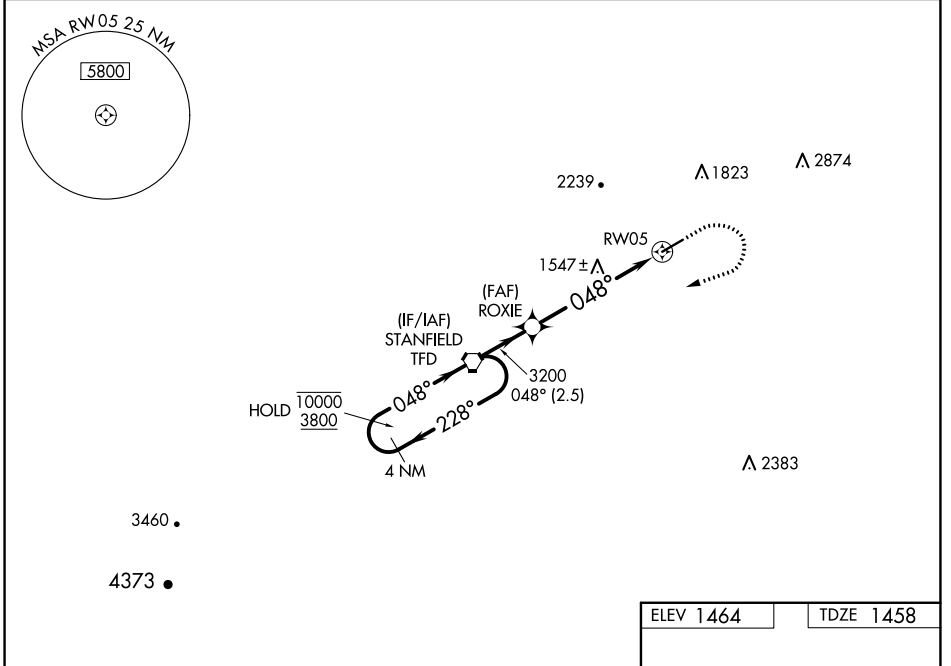
WAAS CH 61042 W05A	APP CRS 048°	Rwy Idg TDZE Apt Elev	5200 1458 1464
--	------------------------	-----------------------------	---

RNAV (GPS) RWY 5

CASA GRANDE MUNI (CGZ)

RNP APCH.	MALSR	MISSED APPROACH: (Do not exceed 240K until TFD VORTAC) Climb to 2000 then climbing right turn to 5900 direct TFD VORTAC and hold. Continue climb in hold to 5900.
<p>▽ For uncompensated Baro-VNAV systems, LNAV/VNAV NA below -17°C or above 54°C. Circling NA for Cat C and D northwest of Rwy 5-23. For inoperative ALS, increase LNAV Cat C/D visibility to 1 SM.</p>		

AWOS-3PT 132.175	ALBUQUERQUE CENTER 125.4 269.3	UNICOM 122.7 (CTAF) 0
----------------------------	--	---------------------------------



CATEGORY	A	B	C	D
LPV DA		1708-½	250 (300-½)	
LNAV/VNAV DA		1708-½	250 (300-½)	
LNAV MDA	1800-½	342 (400-½)	1800-⅝	342 (400-⅝)
C CIRCLING	1960-1	496 (500-1)	1960-1½ 496 (500-1½)	2260-2½ 796 (800-2½)


SW-4, 22 FEB 2024 to 21 MAR 2024


SW-4, 22 FEB 2024 to 21 MAR 2024

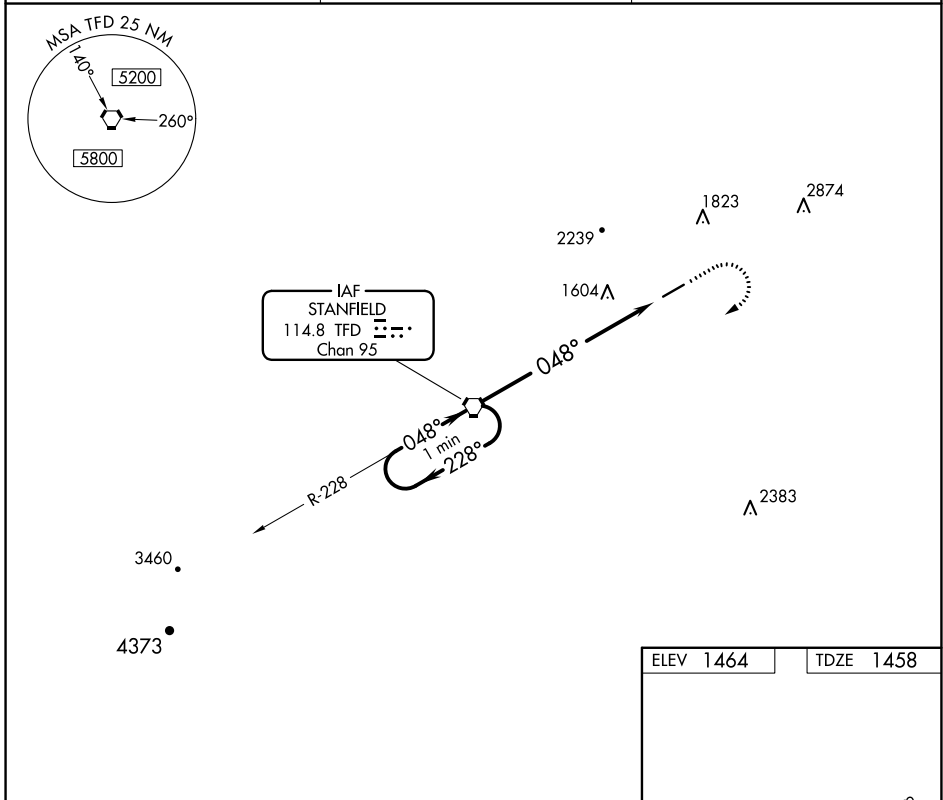
VORTAC TFD 114.8 Chan 95	APP CRS 048°	Rwy Idg 5200 TDZE 1458 Apt Elev 1464
--	------------------------	---

VOR RWY 5

CASA GRANDE MUNI (CGZ)

<p>▽ For inop ALS, increase S-5 Cats A/B visibility to 1 mile. Rwy 5 helicopter visibility reduction below 3/4 SM NA. Circling Rwy 23 NA at night.</p>	<p>MALSR </p>	<p>MISSED APPROACH: Climb to 2200, then climbing right turn to 3500 direct TFD VORTAC and hold.</p>
---	--	--

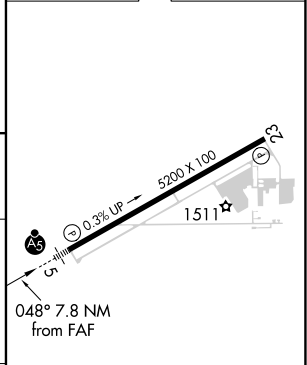
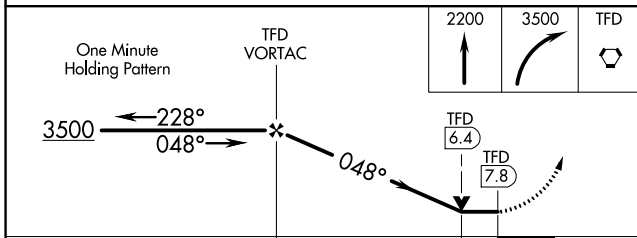
AWOS-3PT 132-175	ALBUQUERQUE CENTER 125.4 269.3	UNICOM 122.7 (CTAF) 
----------------------------	--	---




SW-4, 22 FEB 2024 to 21 MAR 2024

SW-4, 22 FEB 2024 to 21 MAR 2024

ELEV 1464	TDZE 1458
-----------	-----------



CATEGORY	A	B	C	D
S-5	1960-3/4	502 (500-3/4)	NA	NA
 CIRCLING	1960-1	496 (500-1)	NA	NA

MIRL Rwy 5-23

FAF to MAP 7.8 NM					
Knots	60	90	120	150	180
Min:Sec	7:48	5:12	3:54	3:07	2:36