

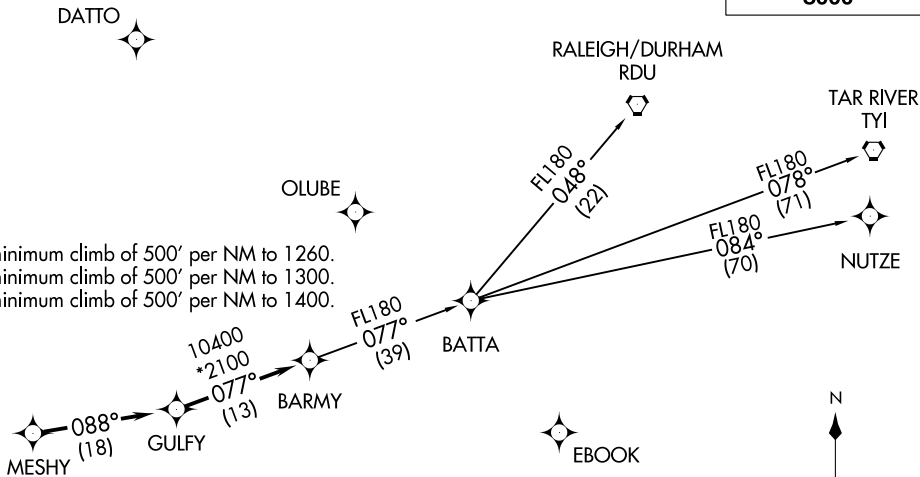
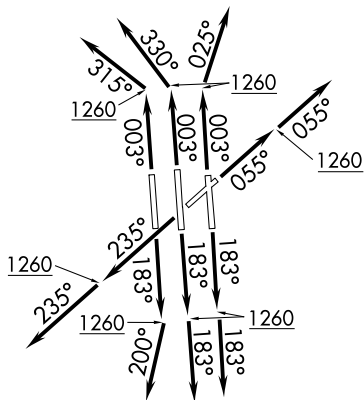
BARMY FOUR DEPARTURE (RNAV)
(BARMY4.BARMY) 03JAN19

CHARLOTTE, NORTH CAROLINA
CHARLOTTE/DOUGLAS INTL (CLT)

D-ATIS DEP 132.1
CLNC DEL
127.15 348.6
CPDLC
GND CON
121.8 348.6 (WEST)
121.9 348.6 (EAST)
CHARLOTTE TOWER
118.1 257.8 (Rwys 18L-36R)
126.4 257.8 (Rwy 18C-36C)
133.35 257.8 (Rwy 18R-36L)
CHARLOTTE DEP CON
124.0 307.8

TAKEOFF MINIMUMS

Rwys 18C/L/R, 23, 36C/R: Standard with minimum climb of 500' per NM to 1260.
Rwy 5: Standard with minimum climb of 500' per NM to 1300.
Rwy 36L: Standard with minimum climb of 500' per NM to 1400.



TOP ALTITUDE:
8000

- NOTE: For turbojets only.
- NOTE: DME/DME/IRU or GPS required.
- NOTE: RNAV 1.
- NOTE: RADAR required.
- NOTE: If unable to accept climb rates, advise ATC on initial contact.
- NOTE: Transponder code will be issued via PDC or Charlotte CLNC DEL.
- NOTE: Accelerate to 250K, if unable advise ATC. Upon reaching 10000 MSL, accelerate to and maintain 280K, if unable advise ATC.

(NARRATIVE ON FOLLOWING PAGE)

NOTE: Chart not to scale.

(BARMY4.BARMY) 23166
AL-78 (FAA)
BARMY FOUR DEPARTURE (RNAV)

CHARLOTTE/DOUGLAS INTL (CLT)
CHARLOTTE, NORTH CAROLINA

BARMY FOUR DEPARTURE (RNAV)



DEPARTURE ROUTE DESCRIPTION SEE ADDITIONAL REQUIREMENTS ON AAUP

TAKEOFF RWY 5: Climb heading 055° to 1260, then on heading 055° or as assigned by ATC, expect RADAR vectors to MESHY, thence. . . .

TAKEOFF RWYS 18L/C: Climb heading 183° to 1260, then on heading 183° or as assigned by ATC, expect RADAR vectors to MESHY, thence. . . .

TAKEOFF RWY 18R: Climb heading 183° to 1260, then on heading 200° or as assigned by ATC, expect RADAR vectors to MESHY, thence. . . .

TAKEOFF RWY 23: Climb heading 235° to 1260, then on heading 235° or as assigned by ATC, expect RADAR vectors to MESHY, thence. . . .

TAKEOFF RWY 36C: Climb heading 003° to 1260, then on heading 330° or as assigned by ATC, expect RADAR vectors to MESHY, thence. . . .

TAKEOFF RWY 36L: Climb heading 003° to 1260, then on heading 315° or as assigned by ATC, expect RADAR vectors to MESHY, thence. . . .

TAKEOFF RWY 36R: Climb heading 003° to 1260, then on heading 025° or as assigned by ATC, expect RADAR vectors to MESHY, thence. . . .

. . . . on depicted route to BARMY, then on assigned transition. Maintain 8000. Expect clearance to filed altitude within 10 minutes after departure.

NUTZE TRANSITION (BARMY4.NUTZE)

RALEIGH/DURHAM TRANSITION (BARMY4.RDU)

TAR RIVER TRANSITION (BARMY4.TYI)

SE-2, 22 FEB 2024 to 21 MAR 2024

SE-2, 22 FEB 2024 to 21 MAR 2024

(BEAVY5.BEAVY) 23166

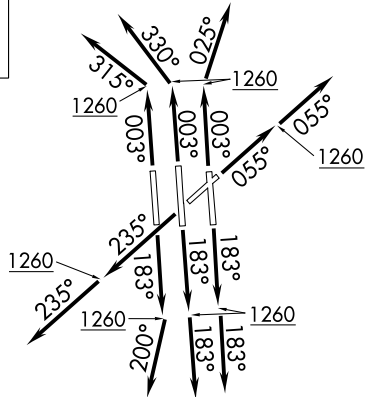
AL-78 (FAA)

CHARLOTTE/DOUGLAS INTL (CLT)
CHARLOTTE, NORTH CAROLINA

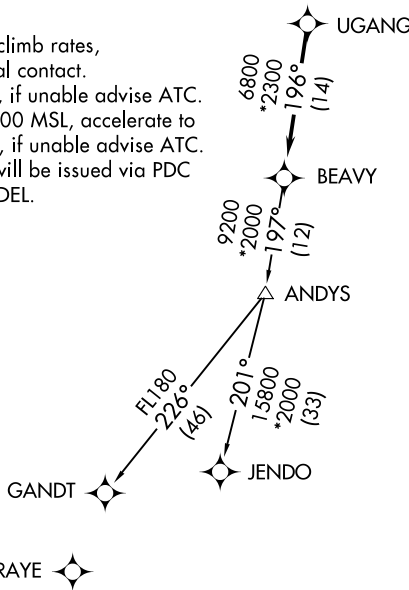
BEAVY FIVE DEPARTURE (RNAV)

D-ATIS DEP 132.1
 CLNC DEL
 127.15 348.6
 CPDLC
 GND CON
 121.8 348.6 (WEST)
 121.9 348.6 (EAST)
 CHARLOTTE TOWER
 118.1 257.8 (Rwys 18L-36R)
 126.4 257.8 (Rwy 18C-36C)
 133.35 257.8 (Rwy 18R-36L)
 CHARLOTTE DEP CON
 120.5 257.2 (Rwys 36L/C)
 124.0 307.8 (Rwys 18L/C/R, 36R)

**TOP ALTITUDE:
8000**



- NOTE: For turbojets only.
- NOTE: DME/DME/IRU or GPS required.
- NOTE: RNAV 1.
- NOTE: RADAR required.
- NOTE: If unable to accept climb rates, advise ATC on initial contact.
- NOTE: Accelerate to 250K, if unable advise ATC. Upon reaching 10000 MSL, accelerate to and maintain 280K, if unable advise ATC.
- NOTE: Transponder code will be issued via PDC or Charlotte CLNC DEL.



TAKEOFF MINIMUMS

- Rwys 18C/L/R, 23, 36C/R: Standard with minimum climb of 500' per NM to 1260.
- Rwy 5: Standard with minimum climb of 500' per NM to 1300.
- Rwy 36L: Standard with minimum climb of 500' per NM to 1400.

NOTE: Chart not to scale.

(NARRATIVE ON FOLLOWING PAGE)

BEAVY FIVE DEPARTURE (RNAV)

(BEAVY5.BEAVY) 03JAN19

CHARLOTTE, NORTH CAROLINA
CHARLOTTE/DOUGLAS INTL (CLT)

SE-2, 22 FEB 2024 to 21 MAR 2024

(BEAVY5.BEAVY) 19003

BEAVY FIVE DEPARTURE (RNAV)

AL-78 (FAA)

CHARLOTTE/DOUGLAS INTL (CLT)
CHARLOTTE, NORTH CAROLINA



DEPARTURE ROUTE DESCRIPTION
SEE ADDITIONAL REQUIREMENTS ON AAUP

TAKEOFF RWY 5: Climb heading 055° to 1260, then on heading 055° or as assigned by ATC, expect RADAR vectors to UGANG, thence. . . .

TAKEOFF RWY 18C/L: Climb heading 183° to 1260, then on heading 183° or as assigned by ATC, expect RADAR vectors to UGANG, thence. . . .

TAKEOFF RWY 18R: Climb heading 183° to 1260, then on heading 200° or as assigned by ATC, expect RADAR vectors to UGANG, thence. . . .

TAKEOFF RWY 23: Climb heading 235° to 1260, then on heading 235° or as assigned by ATC, expect RADAR vectors to UGANG, thence. . . .

TAKEOFF RWY 36C: Climb heading 003° to 1260, then on heading 330° or as assigned by ATC, expect RADAR vectors to UGANG, thence. . . .

TAKEOFF RWY 36L: Climb heading 003° to 1260, then on heading 315° or as assigned by ATC, expect RADAR vectors to UGANG, thence. . . .

TAKEOFF RWY 36R: Climb heading 003° to 1260, then on heading 025° or as assigned by ATC, expect RADAR vectors to UGANG, thence. . . .

. . . .on track 196° to BEAVY, then on assigned transition. Maintain 8000.

Expect clearance to filed altitude within 10 minutes after departure.

GANDT TRANSITION (BEAVY5.GANDT)

JENDO TRANSITION (BEAVY5.JENDO)

SE-2, 22 FEB 2024 to 21 MAR 2024

SE-2, 22 FEB 2024 to 21 MAR 2024

BEAVY FIVE DEPARTURE (RNAV)

(BEAVY5.BEAVY) 03JAN19

CHARLOTTE, NORTH CAROLINA
CHARLOTTE/DOUGLAS INTL (CLT)

**TOP ALTITUDE:
8000**

- NOTE: For turbojets only.
- NOTE: DME/DME/IRU or GPS required.
- NOTE: RNAV 1.
- NOTE: RADAR required.
- NOTE: If unable to accept climb rates, advise ATC on initial contact.
- NOTE: Accelerate to 250K, if unable advise ATC. Upon reaching 10000 MSL, accelerate to and maintain 280K, if unable advise ATC.

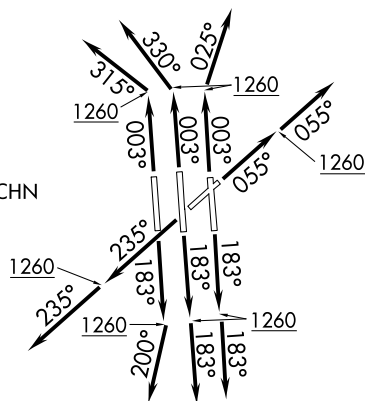
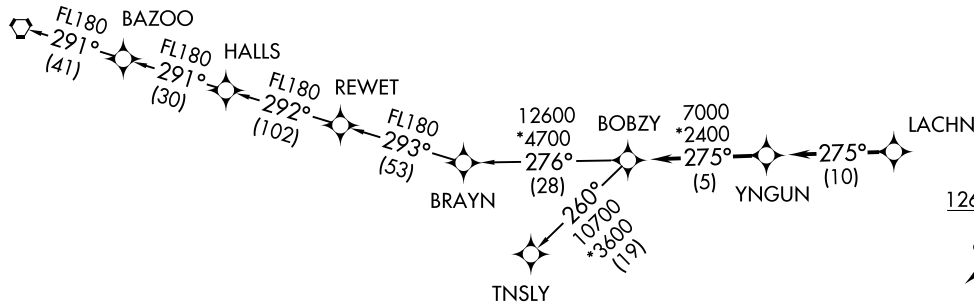


D-ATIS DEP 132.1
 CLNC DEL
 127.15 348.6
 CPDLC
 GND CON
 121.8 348.6 (WEST)
 121.9 348.6 (EAST)
 CHARLOTTE TOWER
 118.1 257.8 (Rwys 18L-36R)
 126.4 257.8 (Rwy 18C-36C)
 133.35 257.8 (Rwy 18R-36L)
 CHARLOTTE DEP CON
 120.5 257.2

TAKEOFF MINIMUMS

Rwys 18C/L/R, 23, 36C/R: Standard with minimum climb of 500' per NM to 1260.
 Rwy 5: Standard with minimum climb of 500' per NM to 1300.
 Rwy 36L: Standard with minimum climb of 500' per NM to 1400.

NASHVILLE
BNA



(NARRATIVE ON FOLLOWING PAGE)

NOTE: Chart not to scale.

BOBZY FOUR DEPARTURE (RNAV)
(BOBZY4.BOBZY) 03JAN19

CHARLOTTE, NORTH CAROLINA
CHARLOTTE/DOUGLAS INTL (CLT)

(BOBZY4.BOBZY) 23166
BOBZY FOUR DEPARTURE (RNAV)

AL-78 (FAA)

CHARLOTTE/DOUGLAS INTL (CLT)
CHARLOTTE, NORTH CAROLINA



DEPARTURE ROUTE DESCRIPTION
SEE ADDITIONAL REQUIREMENTS ON AAUP

- TAKEOFF RWY 5: Climb heading 055° to 1260, then on heading 055° or as assigned by ATC, expect RADAR vectors to LACHN, thence. . . .
- TAKEOFF RWYS 18C/L: Climb heading 183° to 1260, then on heading 183° or as assigned by ATC, expect RADAR vectors to LACHN, thence. . . .
- TAKEOFF RWY 18R: Climb heading 183° to 1260, then on heading 200° or as assigned by ATC, expect RADAR vectors to LACHN, thence. . . .
- TAKEOFF RWY 23: Climb heading 235° to 1260, then on heading 235° or as assigned by ATC, expect RADAR vectors to LACHN, thence. . . .
- TAKEOFF RWY 36C: Climb heading 003° to 1260, then on heading 330° or as assigned by ATC, expect RADAR vectors to LACHN, thence. . . .
- TAKEOFF RWY 36L: Climb heading 003° to 1260, then on heading 315° or as assigned by ATC, expect RADAR vectors to LACHN, thence. . . .
- TAKEOFF RWY 36R: Climb heading 003° to 1260, then on heading 025° or as assigned by ATC, expect RADAR vectors to LACHN, thence. . . .

. . . .on depicted route to BOBZY, then on assigned transition. Maintain 8000.
Expect clearance to filed altitude within 10 minutes after departure.

- NASHVILLE TRANSITION (BOBZY4.BNA)
- TNSLY TRANSITION (BOBZY4.TNSLY)

SE-2, 22 FEB 2024 to 21 MAR 2024

SE-2, 22 FEB 2024 to 21 MAR 2024

(CLT3.CLT) 23222

CHARLOTTE THREE DEPARTURE

AL-78 (FAA)

CHARLOTTE/DOUGLAS INTL (CLT)
CHARLOTTE, NORTH CAROLINA

D-ATIS DEP

132.1
CLNC DEL
127.15 348.6
CPDLC
GND CON
121.8 348.6 (WEST)
121.9 348.6 (EAST)
CHARLOTTE TOWER
118.1 257.8 (Rwys 18L-36R)
126.4 257.8 (Rwy 18C-36C)
133.35 257.8 (Rwy 18R-36L)

RADAR and DME required.

**TOP ALTITUDE:
8000**

CHARLOTTE DEP CON
120.5 257.2 (HARAY, PITY)
Transition. Rwys 36L/C

GREENSBORO
116.2 GSO
Chan 109
N36°02.74'
W79°58.58'
L-25-36, H-9-12

SUGARLOAF MOUNTAIN
112.2 SUG
Chan 59
N35°24.39' W82°16.12'
L-25, H-9-12

PITY
N35°19.82'
W81°51.09'
L-25

HARAY
N35°07.76'
W81°45.69'
L-25

SPARTANBURG
115.7 SPA
Chan 104
N35°02.02' W81°55.62'
L-24-25, H-9-12

CHARLOTTE
115.0 CLT
Chan 97
N35°11.42'
W80°57.11'

BUCKL
N34°31.50'
W80°52.89'

COLUMBIA
114.7 CAE
Chan 94
N33°51.43' W81°03.23'
L-24, H-9-12

CHARLOTTE DEP CON
124.0 307.8 (BUCKL, GANTS, LILLS,
RUNIE Transition. Rwys 18L/C/R, 36R)

CHESTERFIELD
114.55 CTF
Chan 92(Y)
N34°39.03' W80°16.49'
L-24-25-36, H-9-12

FLORENCE
115.2 FLO
Chan 99
N34°13.98'
W79°39.43'
L-24-35-36, H-9-12

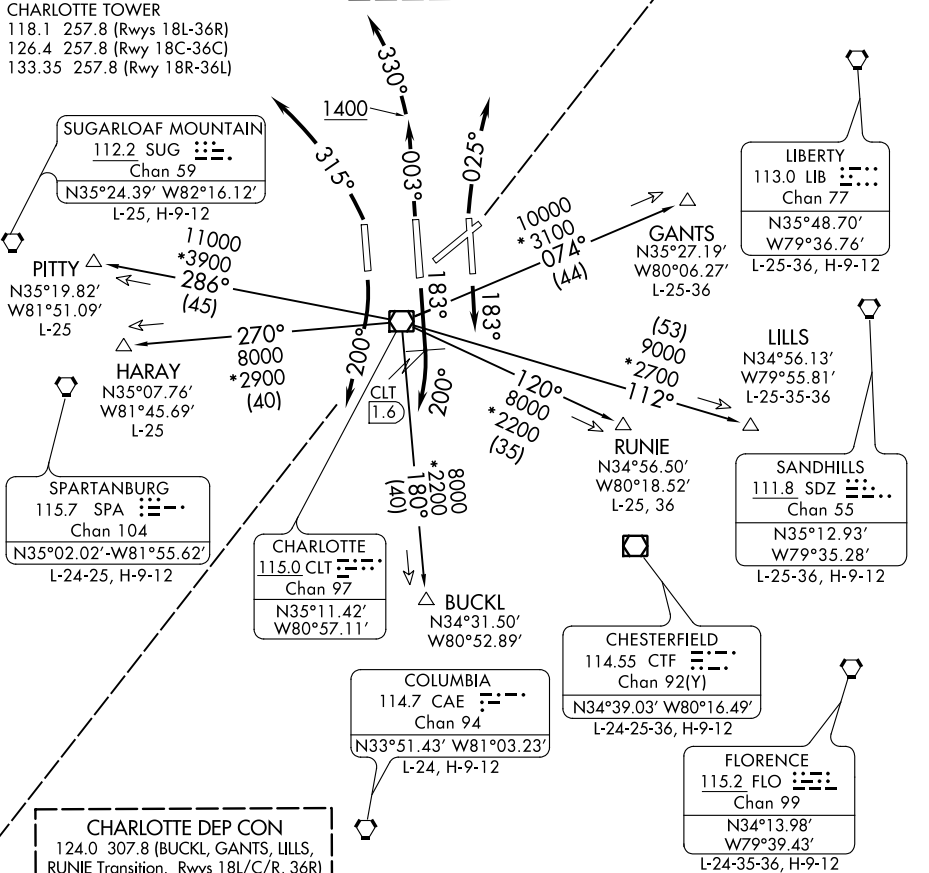
LIBERTY
113.0 LIB
Chan 77
N35°48.70'
W79°36.76'
L-25-36, H-9-12

GANTS
N35°27.19'
W80°06.27'
L-25-36

LILLS
N34°56.13'
W79°55.81'
L-25-35-36

SANDHILLS
111.8 SDZ
Chan 55
N35°12.93'
W79°35.28'
L-25-36, H-9-12

RUNIE
N34°56.50'
W80°18.52'
L-25, 36

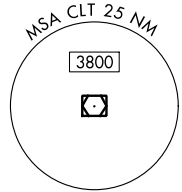


SE-2, 22 FEB 2024 to 21 MAR 2024

SE-2, 22 FEB 2024 to 21 MAR 2024

- NOTE: For turbo jet aircraft requesting at or below 10000' only.
- NOTE: Accelerate to 250K, if unable, advise ATC.
- NOTE: Transponder code will be issued via PDC or Charlotte clearance delivery.
- NOTE: If unable to accept climb rate, advise ATC on initial contact.

TAKEOFF MINIMUMS:
Rwys 18L/C/R, 36C/R: Standard.
Rwy 36L: Standard with minimum climb of 231' per NM to 3600.



NOTE: Chart not to scale.

(NARRATIVE ON FOLLOWING PAGE)

CHARLOTTE THREE DEPARTURE

(CLT3.CLT) 10AUG23

CHARLOTTE, NORTH CAROLINA
CHARLOTTE/DOUGLAS INTL (CLT)



DEPARTURE ROUTE DESCRIPTION

TAKEOFF RUNWAY 18C: Climb on heading 183° until passing CLT VOR/DME 1.6 DME, then turn right heading 200°, Thence. . . .

TAKEOFF RUNWAY 18L: Climb on heading 183°, Thence. . . .

TAKEOFF RUNWAY 18R: Climbing right turn heading 200°, Thence. . . .

TAKEOFF RUNWAY 36C: Climb on heading 003° to 1400 then left turn heading 330°, Thence. . . .

TAKEOFF RUNWAY 36L: Climbing left turn heading 315°, Thence. . . .

TAKEOFF RUNWAY 36R: Climbing right turn heading 025°, Thence. . . .

. . . .expect RADAR vectors to intercept filed/assigned transition or enroute fix/navaid. Maintain 8000. Expect clearance to filed altitude/flight level within ten (10) minutes after departure.

BUCKL TRANSITION (CLT3.BUCKL): From over CLT VOR/DME to BUCKL.

GANTS TRANSITION (CLT3.GANTS): From over CLT VOR/DME to GANTS.

HARAY TRANSITION (CLT3.HARAY): From over CLT VOR/DME to HARAY.

LILLS TRANSITION (CLT3.LILLS): From over CLT VOR/DME to LILLS.

PITTY TRANSITION (CLT3.PITTY): From over CLT VOR/DME to PITTY.

RUNIE TRANSITION (CLT3.RUNIE): From over CLT VOR/DME to RUNIE.

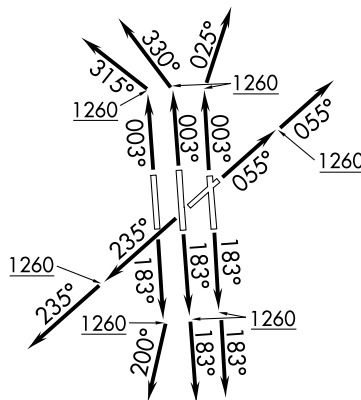
SE-2, 22 FEB 2024 to 21 MAR 2024

SE-2, 22 FEB 2024 to 21 MAR 2024

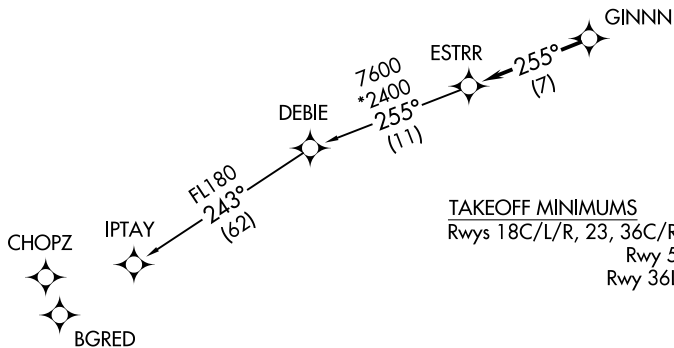
ESTRR FOUR DEPARTURE (RNAV)
(ESTRR4, ESTRR) 03JAN19

**TOP ALTITUDE:
8000**

- NOTE: For turbojets only.
- NOTE: DME/DME/IRU or GPS required.
- NOTE: RNAV 1.
- NOTE: RADAR required.
- NOTE: If unable to accept climb rates, advise ATC on initial contact.
- NOTE: Accelerate to 250K, if unable advise ATC. Upon reaching 10000 MSL, accelerate to and maintain 280K, if unable advise ATC.



D-ATIS DEP 132.1
 CLNC DEL 127.15 348.6
 CPDLC
 GND CON 121.8 348.6 (WEST)
 121.9 348.6 (EAST)
 CHARLOTTE TOWER
 118.1 257.8 (Rwys 18L-36R)
 126.4 257.8 (Rwy 18C-36C)
 133.35 257.8 (Rwy 18R-36L)
 CHARLOTTE DEP CON
 120.5 257.2



TAKEOFF MINIMUMS

Rwys 18C/L/R, 23, 36C/R: Standard with minimum climb of 500' per NM to 1260.
 Rwy 5: Standard with minimum climb of 500' per NM to 1300.
 Rwy 36L: Standard with minimum climb of 500' per NM to 1400.

(NARRATIVE ON FOLLOWING PAGE)

NOTE: Chart not to scale.

(ESTRR4, ESTRR) 23166
ESTRR FOUR DEPARTURE (RNAV)

AL-78 (FAA)

CHARLOTTE/DOUGLAS INTL (CLT)
CHARLOTTE, NORTH CAROLINA

CHARLOTTE, NORTH CAROLINA
CHARLOTTE/DOUGLAS INTL (CLT)

ESTRR FOUR DEPARTURE (RNAV)



DEPARTURE ROUTE DESCRIPTION SEE ADDITIONAL REQUIREMENTS ON AAUP

TAKEOFF RWY 5: Climb heading 055° to 1260, then on heading 055° or as assigned by ATC, expect RADAR vectors to GINNN, thence. . . .

TAKEOFF RWYS 18C/L: Climb heading 183° to 1260, then on heading 183° or as assigned by ATC, expect RADAR vectors to GINNN, thence. . . .

TAKEOFF RWY 18R: Climb heading 183° to 1260, then on heading 200° or as assigned by ATC, expect RADAR vectors to GINNN, thence. . . .

TAKEOFF RWY 23: Climb heading 235° to 1260, then on heading 235° or as assigned by ATC, expect RADAR vectors to GINNN, thence. . . .

TAKEOFF RWY 36C: Climb heading 003° to 1260, then on heading 330° or as assigned by ATC, expect RADAR vectors to GINNN, thence. . . .

TAKEOFF RWY 36L: Climb heading 003° to 1260, then on heading 315° or as assigned by ATC, expect RADAR vectors to GINNN, thence. . . .

TAKEOFF RWY 36R: Climb heading 003° to 1260, then on heading 025° or as assigned by ATC, expect RADAR vectors to GINNN, thence. . . .

. . . .on track 255° to ESTRR, then on IPTAY transition. Maintain 8000. Expect clearance to filed altitude within 10 minutes after departure.

IPTAY TRANSITION (ESTRR4.IPTAY)

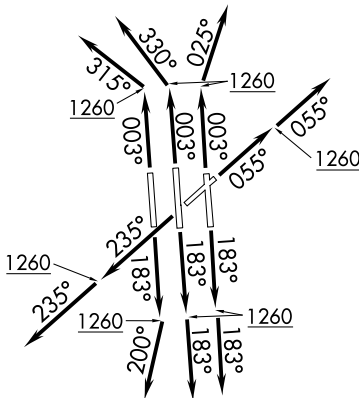
SE-2, 22 FEB 2024 to 21 MAR 2024

SE-2, 22 FEB 2024 to 21 MAR 2024

ICONS FOUR DEPARTURE (RNAV)

**TOP ALTITUDE:
8000**

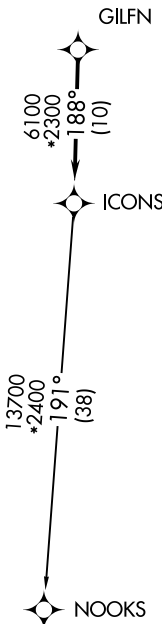
D-ATIS DEP 132.1
 CLNC DEL
 127.15 348.6
 CPDLC
 GND CON
 121.8 348.6 (WEST)
 121.9 348.6 (EAST)
 CHARLOTTE TOWER
 118.1 257.8 (Rwys 18L-36R)
 126.4 257.8 (Rwy 18C-36C)
 133.35 257.8 (Rwy 18R-36L)
 CHARLOTTE DEP CON
 120.5 257.2 (Rwys 36L/C)
 124.0 307.8 (Rwys 18L/C/R, 36R)



TAKEOFF MINIMUMS

Rwys 18C/L/R, 23, 36C/L/R: Standard with minimum climb of 500' per NM to 1260.
 Rwy 5: Standard with minimum climb of 500' per NM to 1300.

- NOTE: For turbojets only.
- NOTE: DME/DME/IRU or GPS required.
- NOTE: RNAV 1.
- NOTE: RADAR required.
- NOTE: If unable to accept climb rates, advise ATC on initial contact.
- NOTE: Accelerate to 250K, if unable advise ATC. Upon reaching 10000 MSL, accelerate to and maintain 280K, if unable advise ATC.
- NOTE: Transponder code will be issued via PDC or Charlotte CLNC DEL.



(NARRATIVE ON FOLLOWING PAGE)

NOTE: Chart not to scale.

ICONS FOUR DEPARTURE (RNAV)

SE-2, 22 FEB 2024 to 21 MAR 2024

SE-2, 22 FEB 2024 to 21 MAR 2024

ICONS FOUR DEPARTURE (RNAV)



DEPARTURE ROUTE DESCRIPTION

SEE ADDITIONAL REQUIREMENTS ON AAUP

TAKEOFF RWY 5: Climb heading 055° to 1260, then on heading 055° or as assigned by ATC, expect RADAR vectors to GILFN, thence. . . .

TAKEOFF RWYS 18C/L: Climb heading 183° to 1260, then on heading 183° or as assigned by ATC, expect RADAR vectors to GILFN, thence. . . .

TAKEOFF RWY 18R: Climb heading 183° to 1260, then on heading 200° or as assigned by ATC, expect RADAR vectors to GILFN, thence. . . .

TAKEOFF RWY 23: Climb heading 235° to 1260, then on heading 235° or as assigned by ATC, expect RADAR vectors to GILFN, thence. . . .

TAKEOFF RWY 36C: Climb heading 003° to 1260, then on heading 330° or as assigned by ATC, expect RADAR vectors to GILFN, thence. . . .

TAKEOFF RWY 36L: Climb heading 003° to 1260, then on heading 315° or as assigned by ATC, expect RADAR vectors to GILFN, thence. . . .

TAKEOFF RWY 36R: Climb heading 003° to 1260, then on heading 025° or as assigned by ATC, expect RADAR vectors to GILFN, thence. . . .

. . . .on track 188° to ICONS, then on NOOKS transition. Maintain 8000. Expect clearance to filed altitude within 10 minutes after departure.

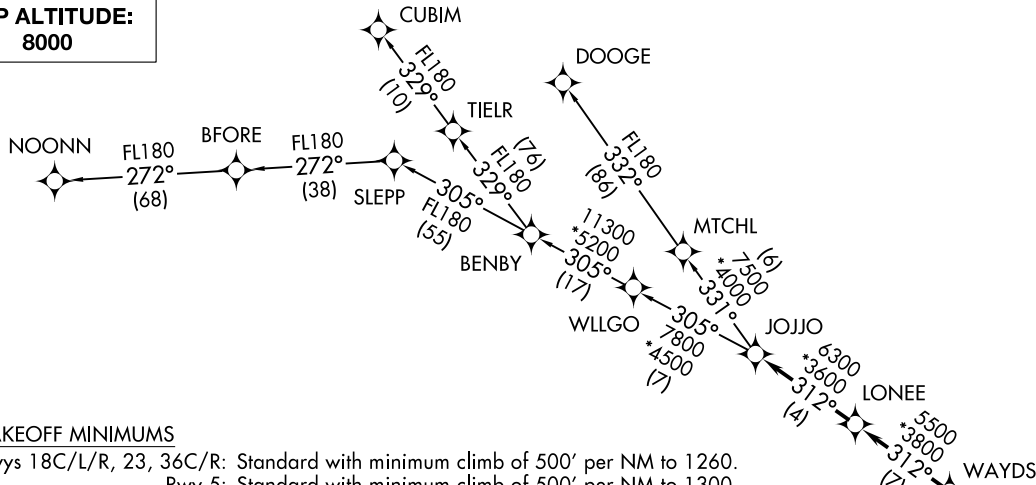
NOOKS TRANSITION (ICONS4.NOOKS)

SE-2, 22 FEB 2024 to 21 MAR 2024

SE-2, 22 FEB 2024 to 21 MAR 2024

JOJO FOUR DEPARTURE (RNAV)
(JOJO4.JOJO) 03JAN19

**TOP ALTITUDE:
8000**

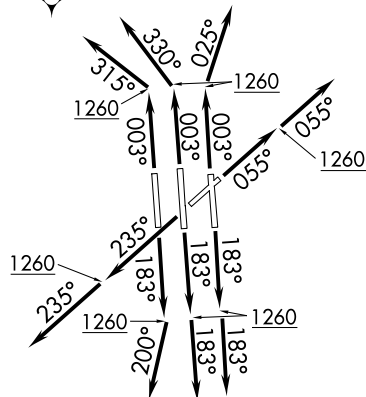


D-ATIS DEP 132.1
 CLNC DEL 127.15 348.6
 CPDLC
 GND CON 121.8 348.6 (WEST)
 121.9 348.6 (EAST)
 CHARLOTTE TOWER
 118.1 257.8 (Rwys 18L-36R)
 126.4 257.8 (Rwy 18C-36C)
 133.35 257.8 (Rwy 18R-36L)
 CHARLOTTE DEP CON
 120.5 257.2

TAKEOFF MINIMUMS

Rwys 18C/L/R, 23, 36C/R: Standard with minimum climb of 500' per NM to 1260.
 Rwy 5: Standard with minimum climb of 500' per NM to 1300.
 Rwy 36L: Standard with minimum climb of 500' per NM to 1400.

- NOTE: For turbojets only.
- NOTE: DME/DME/IRU or GPS required.
- NOTE: RNAV 1.
- NOTE: RADAR required.
- NOTE: If unable to accept climb rates, advise ATC on initial contact.
- NOTE: Accelerate to 250K, if unable advise ATC. Upon reaching 10000 MSL, accelerate to and maintain 280K, if unable advise ATC.
- NOTE: NOONN TRANSITION ATC assigned only.



NOTE: Chart not to scale.

(NARRATIVE ON FOLLOWING PAGE)

CHARLOTTE, NORTH CAROLINA
CHARLOTTE/DOUGLAS INTL (CLT)

(JOJO4.JOJO) 23166
JOJO FOUR DEPARTURE (RNAV)

AL-78 (FAA)
CHARLOTTE/DOUGLAS INTL (CLT)
CHARLOTTE, NORTH CAROLINA

JOJJO FOUR DEPARTURE (RNAV)



DEPARTURE ROUTE DESCRIPTION SEE ADDITIONAL REQUIREMENTS ON AAUP

TAKEOFF RWY 5: Climb heading 055° to 1260, then on heading 055° or as assigned by ATC, expect RADAR vectors to WAYDS, thence. . . .

TAKEOFF RWYS 18C/L: Climb heading 183° to 1260, then on heading 183° or as assigned by ATC, expect RADAR vectors to WAYDS, thence. . . .

TAKEOFF RWY 18R: Climb heading 183° to 1260, then on heading 200° or as assigned by ATC, expect RADAR vectors to WAYDS, thence. . . .

TAKEOFF RWY 23: Climb heading 235° to 1260, then on heading 235° or as assigned by ATC, expect RADAR vectors to WAYDS, thence. . . .

TAKEOFF RWY 36C: Climb heading 003° to 1260, then on heading 330° or as assigned by ATC, expect RADAR vectors to WAYDS, thence. . . .

TAKEOFF RWY 36L: Climb heading 003° to 1260, then on heading 315° or as assigned by ATC, expect RADAR vectors to WAYDS, thence. . . .

TAKEOFF RWY 36R: Climb heading 003° to 1260, then on heading 025° or as assigned by ATC, expect RADAR vectors to WAYDS, thence. . . .

. . . .on depicted route to JOJJO, then on assigned transition. Maintain 8000.
Expect clearance to filed altitude within 10 minutes after departure.

CUBIM TRANSITION (JOJJO4.CUBIM)

DOOGE TRANSITION (JOJJO4.DOOGE)

NOONN TRANSITION (JOJJO4.NOONN)

SE-2, 22 FEB 2024 to 21 MAR 2024

SE-2, 22 FEB 2024 to 21 MAR 2024

(KER3.KER) 23166

AL-78 (FAA)

CHARLOTTE/DOUGLAS INTL (CLT)
CHARLOTTE, NORTH CAROLINA

KERMIT THREE DEPARTURE

D-ATIS DEP 132.1
 CLNC DEL
 127.15 348.6
 CPDLC
 GND CON
 121.8 348.6 (WEST)
 121.9 348.6 (EAST)
 CHARLOTTE TOWER
 118.1 257.8 (Rwys 18L-36R)
 126.4 257.8 (Rwy 18C-36C)
 133.35 257.8 (Rwy 18R-36L)

**TOP ALTITUDE:
8000**

PULASKI
 116.8 PSK
 Chan 115
 N37°05.26'
 W80°42.77'

**NORTHWEST
CHARLOTTE DEP CON**
 120.5 257.2

BARRETTS MOUNTAIN
 113.75 BZM
 Chan 84(Y)

SUGARLOAF MOUNTAIN
 112.2 SUG
 Chan 59

CHARLOTTE
 115.0 CLT
 Chan 97
 N35°11.42'
 W80°57.11'

BOBZY
 N35°11.13'
 W81°38.05'

NEANO
 N35°04.88'
 W81°59.79'
 L-25

FOOTHILLS
 113.4 ODF
 Chan 81

**SOUTHEAST
CHARLOTTE DEP CON**
 124.0 307.8

TREAL
 N33°04.18'
 W81°26.46'
 H-9-12

TAKEOFF MINIMUMS

Rwys 5, 18C/L/R, 23, 36C/L/R: Standard.

NALEY
 N36°21.16'
 W80°48.41'

JOTTA
 N36°00.88'
 W80°50.96'
 L-25

RALEIGH/DURHAM
 117.2 RDU
 Chan 119

MERIL
 N35°36.79'
 W79°26.03'
 L-36

SANDHILLS
 111.8 SDZ
 Chan 55

WALUT
 N34°40.00'
 W80°50.53'

LILLS
 N34°56.13'
 W79°55.81'
 L-25-35-36

HAMLN
 N34°21.54'
 W80°46.71'
 H-12

CHESTERFIELD
 114.55 CTF
 Chan 92(Y)

NOTE: For turbojet aircraft requesting at or above 11000.

NOTE: RADAR and DME required.

NOTE: Accelerate to 250K, if unable advise ATC. Upon reaching 10000 MSL, accelerate to and maintain 280K, if unable advise ATC.

NOTE: Transponder code will be issued via PDC or Charlotte clearance delivery.

(NARRATIVE ON FOLLOWING PAGE)

NOTE: Chart not to scale.

KERMIT THREE DEPARTURE
 (KER3.KER) 03JAN19

CHARLOTTE, NORTH CAROLINA
 CHARLOTTE/DOUGLAS INTL (CLT)

SE-2, 22 FEB 2024 to 21 MAR 2024

SE-2, 22 FEB 2024 to 21 MAR 2024

KERMIT THREE DEPARTURE



DEPARTURE ROUTE DESCRIPTION

TAKEOFF RWY 5: Climb heading 055° to 1700 before turning right, thence. . . .

TAKEOFF RWYS 18C/L: Climb heading 183°, thence. . . .

TAKEOFF RWY 18R: Climbing right turn heading 200°, thence. . . .

TAKEOFF RWY 23: Climb heading 235°, thence. . . .

TAKEOFF RWY 36C: Climb heading 003° to 1400 then left turn heading 330°, thence. . . .

TAKEOFF RWY 36L: Climb heading 003° to 1800 then left turn heading 315°, thence. . . .

TAKEOFF RWY 36R: Climbing right turn heading 025°, thence. . . .

. . . .on RADAR vectors to intercept filed/assigned transition or enroute fix/navaid.
Maintain 8000, expect filed altitude/flight level 10 minutes after departure.

ANDYS TRANSITION (KER3.ANDYS): From over CLT VOR/DME on CLT R-196 to ANDYS.

DEBIE TRANSITION (KER3.DEBIE): From over CLT VOR/DME on CLT R-255 to DEBIE.

HAMLN TRANSITION (KER3.HAMLN): From over CLT VOR/DME on CLT R-175 to HAMLN.

JOTTA TRANSITION (KER3.JOTTA): From over CLT VOR/DME on CLT R-011 to JOTTA.

LILLS TRANSITION (KER3.LILLS): From over CLT VOR/DME on CLT R-112 to LILLS.

MERIL TRANSITION (KER3.MERIL): From over CLT VOR/DME on CLT R-076 to MERIL.

NALEY TRANSITION (KER3.NALEY): From over CLT VOR/DME on CLT R-011 to NALEY.

NEANO TRANSITION (KER3.NEANO): From over CLT VOR/DME on CLT R-275 to BOBZY and ODF R-070 to NEANO.

TREAL TRANSITION (KER3.TREAL): From over CLT VOR/DME on CLT R-196 to TREAL.

SE-2, 22 FEB 2024 to 21 MAR 2024

SE-2, 22 FEB 2024 to 21 MAR 2024

KILNS FOUR DEPARTURE (RNAV)
(KILNS4,KILNS) 03JAN19

(KILNS4,KILNS) 23166
KILNS FOUR DEPARTURE (RNAV)

AL-78 (FAA)

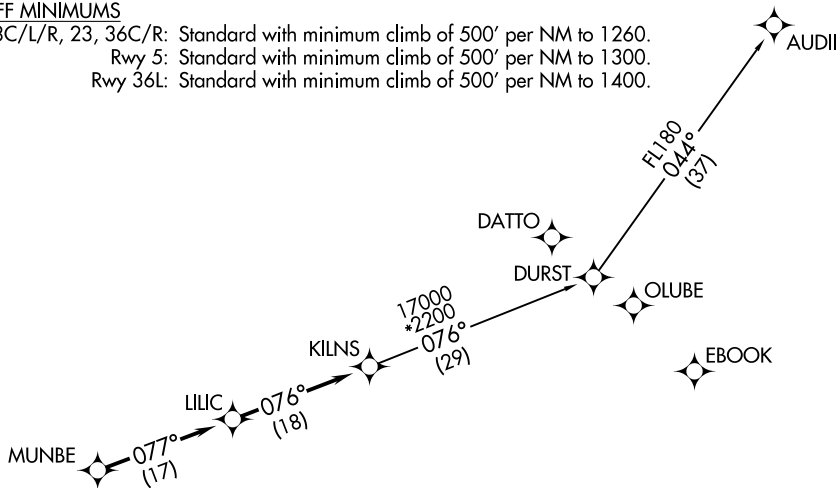
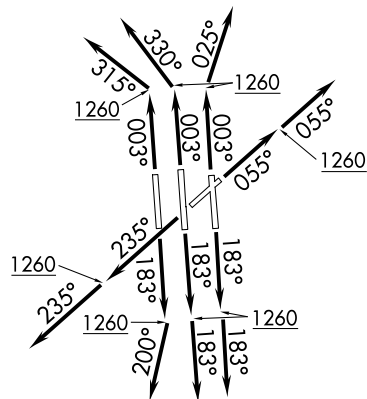
CHARLOTTE/DOUGLAS INTL (CLT)
CHARLOTTE, NORTH CAROLINA

D-ATIS DEP 132.1
CLNC DEL
127.15 348.6
CPDLC
GND CON
121.8 348.6 (WEST)
121.9 348.6 (EAST)
CHARLOTTE TOWER
118.1 257.8 (Rwys 18L-36R)
126.4 257.8 (Rwy 18C-36C)
133.35 257.8 (Rwy 18R-36L)
CHARLOTTE DEP CON
124.0 307.8

TAKEOFF MINIMUMS

Rwys 18C/L/R, 23, 36C/R: Standard with minimum climb of 500' per NM to 1260.
Rwy 5: Standard with minimum climb of 500' per NM to 1300.
Rwy 36L: Standard with minimum climb of 500' per NM to 1400.

**TOP ALTITUDE:
8000**



- NOTE: For turbojets only.
- NOTE: DME/DME/IRU or GPS required.
- NOTE: RNAV 1.
- NOTE: RADAR required.
- NOTE: Transponder code will be issued via PDC or Charlotte CLNC DEL.
- NOTE: Accelerate to 250K, if unable advise ATC. Upon reaching 10000 MSL, accelerate to and maintain 280K, if unable advise ATC.
- NOTE: If unable to accept climb rates, advise ATC on initial contact.

(NARRATIVE ON FOLLOWING PAGE)

NOTE: Chart not to scale.

KILNS FOUR DEPARTURE (RNAV)



DEPARTURE ROUTE DESCRIPTION SEE ADDITIONAL REQUIREMENTS ON AAUP

TAKEOFF RWY 5: Climb heading 055° to 1260, then on heading 055° or as assigned by ATC, expect RADAR vectors to MUNBE, thence. . . .

TAKEOFF RWYS 18C/L: Climb heading 183° to 1260, then on heading 183° or as assigned by ATC, expect RADAR vectors to MUNBE, thence. . . .

TAKEOFF RWY 18R: Climb heading 183° to 1260, then on heading 200° or as assigned by ATC, expect RADAR vectors to MUNBE, thence. . . .

TAKEOFF RWY 23: Climb heading 235° to 1260, then on heading 235° or as assigned by ATC, expect RADAR vectors to MUNBE, thence. . . .

TAKEOFF RWY 36C: Climb heading 003° to 1260, then on heading 330° or as assigned by ATC, expect RADAR vectors to MUNBE, thence. . . .

TAKEOFF RWY 36L: Climb heading 003° to 1260, then on heading 315° or as assigned by ATC, expect RADAR vectors to MUNBE, thence. . . .

TAKEOFF RWY 36R: Climb heading 003° to 1260, then on heading 025° or as assigned by ATC, expect RADAR vectors to MUNBE, thence. . . .

. . . .on depicted route to KILNS, then on AUDII transition. Maintain 8000.
Expect clearance to filed altitude within 10 minutes after departure.

AUDII TRANSITION (KILNS4.AUDII)

SE-2, 22 FEB 2024 to 21 MAR 2024

SE-2, 22 FEB 2024 to 21 MAR 2024

KNIGHTS TWO DEPARTURE

CHARLOTTE/DOUGLAS INTL (CLT)
CHARLOTTE, NORTH CAROLINA

D-ATIS DEP 132.1
 CLNC DEL
 127.15 348.6
 GNDLC
 CPDLC
 WND CON
 121.8 348.6 (WEST)
 121.9 348.6 (EAST)
 CHARLOTTE TOWER
 118.1 257.8 (Rwys 18L-36R)
 126.4 257.8 (Rwy 18C-36C)
 133.35 257.8 (Rwy 18R-36L)

NORTHWEST CHARLOTTE DEP CON	
120.05	257.2 (DEBIE, NEANO TRANSITIONS)
120.05	257.2 (FLYNN, CEGAL TRANSITIONS Rws 18L/C/R)
120.5	257.2 (FLYNN, CEGAL TRANSITIONS Rws 36L/C/R)

TOP ALTITUDE:
4000

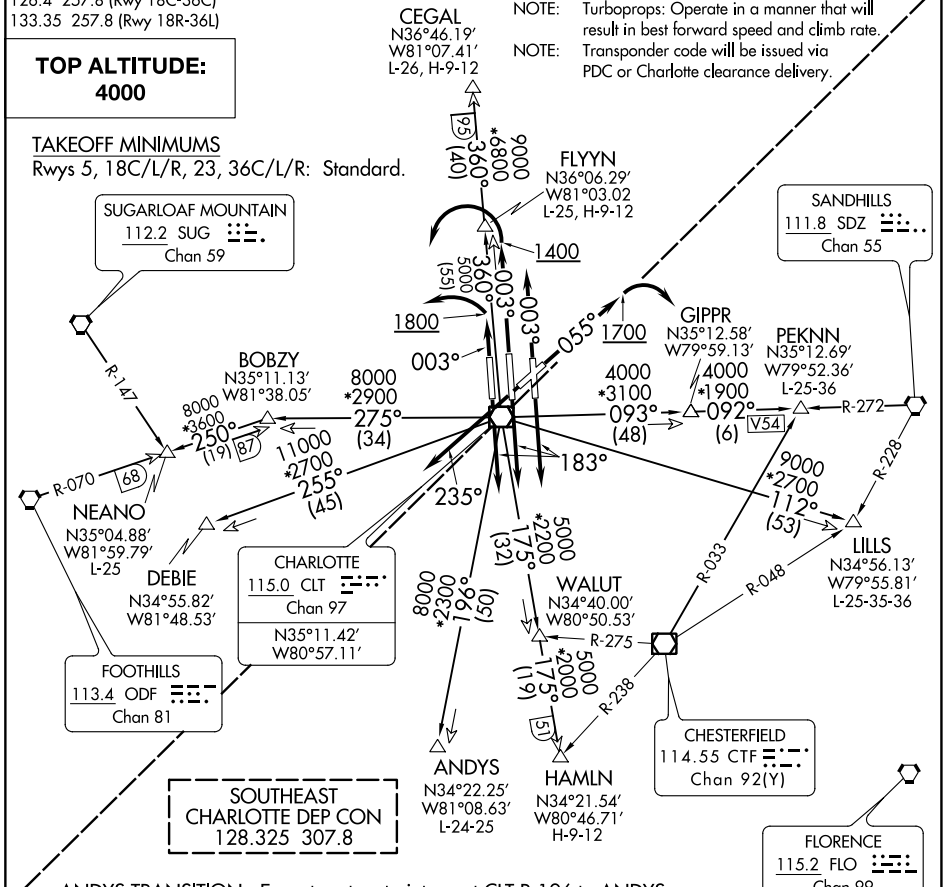
TAKEOFF MINIMUMS

Rwys 5, 18C/L/R, 23, 36C/L/R: Standard.

- NOTE: For propeller aircraft only.
 NOTE: RADAR and DME required.
 NOTE: Turboprops: Operate in a manner that will result in best forward speed and climb rate.
 NOTE: Transponder code will be issued via PDC or Charlotte clearance delivery.

SE-2, 22 FEB 2024 to 21 MAR 2024

SE-2, 22 FEB 2024 to 21 MAR 2024



- ANDYS TRANSITION: Expect vectors to intercept CLT R-196 to ANDYS.
 CEGAL TRANSITION: Expect vectors to intercept CLT R-360 to CEGAL.
 DEBIE TRANSITION: Expect vectors to intercept CLT R-255 to DEBIE.
 FLYNN TRANSITION: Expect vectors to intercept CLT R-360 to FLYNN.
 HAMLN TRANSITION: Expect vectors to intercept CLT R-175 to HAMLN.
 LILLS TRANSITION: Expect vectors to intercept CLT R-112 to LILLS.
 NEANO TRANSITION: Expect vectors to intercept CLT R-275 to BOBZY then ODF R-070 to NEANO.
 PEKNN TRANSITION: Expect vectors to intercept CLT R-093 to GIPPR then SDZ R-272 to PEKNN.

NOTE: Chart not to scale.

(NARRATIVE ON FOLLOWING PAGE)

KNIGHTS TWO DEPARTURE

CHARLOTTE, NORTH CAROLINA
CHARLOTTE/DOUGLAS INTL (CLT)

KNIGHTS TWO DEPARTURE



DEPARTURE ROUTE DESCRIPTION

- TAKEOFF RUNWAY 5: Climb heading 055° to 1700 before turning right, thence
- TAKEOFF RUNWAYS 18C/L/R: Climb heading 183° or as assigned by ATC, thence
- TAKEOFF RUNWAY 23: Climb heading 235° or as assigned by ATC, thence
- TAKEOFF RUNWAY 36C: Climb heading 003° to 1400 before turning left, thence
- TAKEOFF RUNWAY 36L: Climb heading 003° to 1800 before turning left, thence
- TAKEOFF RUNWAY 36R: Climb heading 003° or as assigned by ATC, thence

. . . . expect RADAR vectors to intercept filed/assigned transition or enroute fix/navaid.
Maintain 4000, expect filed altitude/flight level 10 minutes after departure.

- ANDYS TRANSITION (KNI2.ANDYS): From over CLT VOR/DME on CLT R-196 to ANDYS.
- CEGAL TRANSITION (KNI2.CEGAL): From over CLT VOR/DME on CLT R-360 to CEGAL.
- DEBIE TRANSITION (KNI2.DEBIE): From over CLT VOR/DME on CLT R-255 to DEBIE.
- FLYYN TRANSITION (KNI2.FLYYN): From over CLT VOR/DME on CLT R-360 to FLYYN.
- HAMLN TRANSITION (KNI2.HAMLN): From over CLT VOR/DME on CLT R-175 to HAMLN.
- LILLS TRANSITION (KNI2.LILLS): From over CLT VOR/DME on CLT R-112 to LILLS.
- NEANO TRANSITION (KNI2.NEANO): From over CLT VOR/DME on CLT R-275 to BOBZY, then on ODF R-070 to NEANO.
- PEKNN TRANSITION (KNI2.PEKNN): From over CLT VOR/DME on CLT R-093 to GIPPR, then on SDZ R-272 to PEKNN.

SE-2, 22 FEB 2024 to 21 MAR 2024

SE-2, 22 FEB 2024 to 21 MAR 2024

(KRITR5.KRITR) 23166

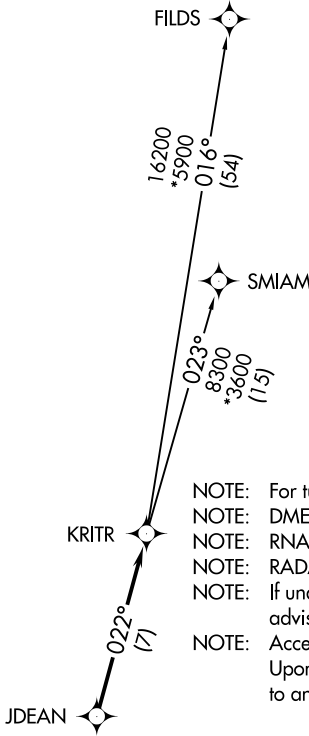
AL-78 (FAA)

CHARLOTTE/DOUGLAS INTL (CLT)
CHARLOTTE, NORTH CAROLINA

KRITR FIVE DEPARTURE (RNAV)

D-ATIS DEP 132.1
 CLNC DEL
 127.15 348.6
 CPDLC
 GND CON
 121.8 348.6 (WEST)
 121.9 348.6 (EAST)
 CHARLOTTE TOWER
 118.1 257.8 (Rwys 18L-36R)
 126.4 257.8 (Rwy 18C-36C)
 133.35 257.8 (Rwy 18R-36L)
 CHARLOTTE DEP CON
 120.5 257.2

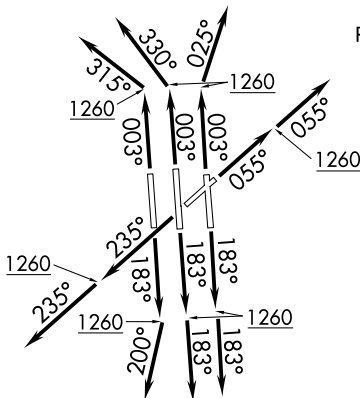
**TOP ALTITUDE:
8000**



- NOTE: For turbojets only.
- NOTE: DME/DME/IRU or GPS required.
- NOTE: RNAV 1.
- NOTE: RADAR required.
- NOTE: If unable to accept climb rates, advise ATC on initial contact.
- NOTE: Accelerate to 250K, if unable advise ATC. Upon reaching 10000 MSL, accelerate to and maintain 280K, if unable advise ATC.

TAKEOFF MINIMUMS

- Rwys 18C/L/R, 23, 36C/R: Standard with minimum climb of 500' per NM to 1260.
- Rwy 5: Standard with minimum climb of 500' per NM to 1300.
- Rwy 36L: Standard with minimum climb of 500' per NM to 1400.



(NARRATIVE ON FOLLOWING PAGE)

NOTE: Chart not to scale.

SE-2, 22 FEB 2024 to 21 MAR 2024

SE-2, 22 FEB 2024 to 21 MAR 2024

KRITR FIVE DEPARTURE (RNAV)

(KRITR5.KRITR) 03JAN19

CHARLOTTE, NORTH CAROLINA
CHARLOTTE/DOUGLAS INTL (CLT)

KRITR FIVE DEPARTURE (RNAV)



DEPARTURE ROUTE DESCRIPTION SEE ADDITIONAL REQUIREMENTS ON AAUP

TAKEOFF RWY 5: Climb heading 055° to 1260, then on heading 055° or as assigned by ATC, expect RADAR vectors to JDEAN, thence. . . .

TAKEOFF RWYS 18C/L: Climb heading 183° to 1260, then on heading 183° or as assigned by ATC, expect RADAR vectors to JDEAN, thence. . . .

TAKEOFF RWY 18R: Climb heading 183° to 1260, then on heading 200° or as assigned by ATC, expect RADAR vectors to JDEAN, thence. . . .

TAKEOFF RWY 23: Climb heading 235° to 1260, then on heading 235° or as assigned by ATC, expect RADAR vectors to JDEAN, thence. . . .

TAKEOFF RWY 36C: Climb heading 003° to 1260, then on heading 330° or as assigned by ATC, expect RADAR vectors to JDEAN, thence. . . .

TAKEOFF RWY 36L: Climb heading 003° to 1260, then on heading 315° or as assigned by ATC, expect RADAR vectors to JDEAN, thence. . . .

TAKEOFF RWY 36R: Climb heading 003° to 1260, then on heading 025° or as assigned by ATC, expect RADAR vectors to JDEAN, thence. . . .

. . . .on track 022° to KRITR, then on assigned transition. Maintain 8000.
Expect clearance to filed altitude within 10 minutes after departure.

FILDS TRANSITION (KRITR5.FILDS)

SMIAM TRANSITION (KRITR5.SMIAM)

SE-2, 22 FEB 2024 to 21 MAR 2024

SE-2, 22 FEB 2024 to 21 MAR 2024

(KWEEN4.KWEEN) 23166

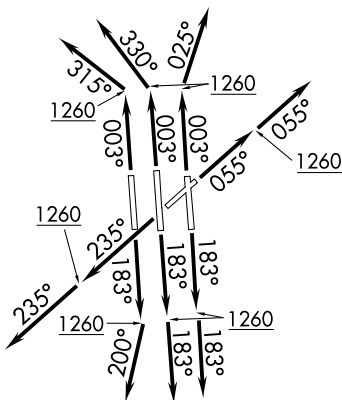
AL-78 (FAA)

CHARLOTTE/DOUGLAS INTL (CLT)
CHARLOTTE, NORTH CAROLINA

KWEEN FOUR DEPARTURE (RNAV)

**TOP ALTITUDE:
8000**

D-ATIS DEP
132.1
CLNC DEL
127.15 348.6
CPDLC
GND CON
121.8 348.6 (WEST)
121.9 348.6 (EAST)
CHARLOTTE TOWER
118.1 257.8 (Rwys 18L-36R)
126.4 257.8 (Rwy 18C-36C)
133.35 257.8 (Rwy 18R-36L)
CHARLOTTE DEP CON
120.5 257.2 (Rwys 36L/C)
124.0 307.8 (Rwys 18L/C/R, 36R)



HMMPY



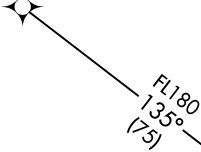
KWEEN



UNJAM



TASTY



PITRW

- NOTE: For turbojets only.
- NOTE: DME/DME/IRU or GPS required.
- NOTE: RNAV 1.
- NOTE: RADAR required.
- NOTE: If unable to accept climb rates, advise ATC on initial contact.
- NOTE: Accelerate to 250K, if unable advise ATC. Upon reaching 10000 MSL, accelerate to and maintain 280K, if unable advise ATC.
- NOTE: Transponder code will be issued via PDC or Charlotte CLNC DEL.

TAKEOFF MINIMUMS

Rwys 18C/L/R, 23, 36C/L/R: Standard with minimum climb of 500' per NM to 1260.
Rwy 5: Standard with minimum climb of 500' per NM to 1300.

NOTE: Chart not to scale.

(NARRATIVE ON FOLLOWING PAGE)

KWEEN FOUR DEPARTURE (RNAV)

(KWEEN4.KWEEN) 03JAN19

CHARLOTTE, NORTH CAROLINA
CHARLOTTE/DOUGLAS INTL (CLT)

SE-2, 22 FEB 2024 to 21 MAR 2024

SE-2, 22 FEB 2024 to 21 MAR 2024

KWEEN FOUR DEPARTURE (RNAV)



DEPARTURE ROUTE DESCRIPTION SEE ADDITIONAL REQUIREMENTS ON AAUP

TAKEOFF RWY 5: Climb heading 055° to 1260, then on heading 055° or as assigned by ATC, expect RADAR vectors to HMMPY, thence. . . .

TAKEOFF RWYS 18C/L: Climb heading 183° to 1260, then on heading 183° or as assigned by ATC, expect RADAR vectors to HMMPY, thence. . . .

TAKEOFF RWY 18R: Climb heading 183° to 1260, then on heading 200° or as assigned by ATC, expect RADAR vectors to HMMPY, thence. . . .

TAKEOFF RWY 23: Climb heading 235° to 1260, then on heading 235° or as assigned by ATC, expect RADAR vectors to HMMPY, thence. . . .

TAKEOFF RWY 36C: Climb heading 003° to 1260, then on heading 330° or as assigned by ATC, expect RADAR vectors to HMMPY, thence. . . .

TAKEOFF RWY 36L: Climb heading 003° to 1260, then on heading 315° or as assigned by ATC, expect RADAR vectors to HMMPY, thence. . . .

TAKEOFF RWY 36R: Climb heading 003° to 1260, then on heading 025° or as assigned by ATC, expect RADAR vectors to HMMPY, thence. . . .

. . . .on track 181° to KWEEN, then on assigned transition. Maintain 8000.
Expect clearance to filed altitude within 10 minutes after departure.

PITRW TRANSITION (KWEEN4.PITRW)

UNJAM TRANSITION (KWEEN4.UNJAM)

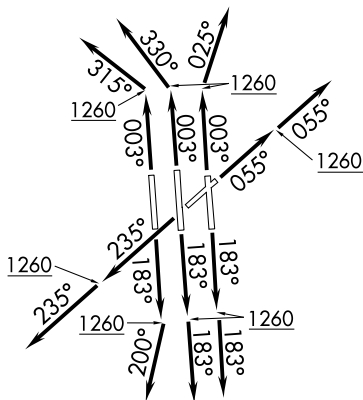
SE-2, 22 FEB 2024 to 21 MAR 2024

SE-2, 22 FEB 2024 to 21 MAR 2024

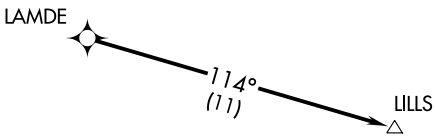
LILLS TWO DEPARTURE (RNAV)

**TOP ALTITUDE:
8000**

D-ATIS DEP 132.1
CLNC DEL
127.15 348.6
CPDLC
GND CON
121.8 348.6 (WEST)
121.9 348.6 (EAST)
CHARLOTTE TOWER
118.1 257.8 (Rwys 18L-36R)
126.4 257.8 (Rwys 18C-36C)
133.35 257.8 (Rwys 18R-36L)
CHARLOTTE DEP CON
124.0 307.8



- NOTE: For turbojets only.
- NOTE: DME/DME/IRU or GPS required.
- NOTE: RNAV 1.
- NOTE: RADAR required.
- NOTE: Accelerate to 250K, if unable advise ATC. Upon reaching 10000 MSL, accelerate to and maintain 280K, if unable advise ATC.
- NOTE: If unable to accept climb rates, advise ATC on initial contact.
- NOTE: Transponder code will be issued via PDC or Charlotte CLNC DEL.



TAKEOFF MINIMUMS

Rwys 18C/L/R, 23, 36C/R: Standard with minimum climb of 500' per NM to 1260.
 Rwy 5: Standard with minimum climb of 500' per NM to 1300.
 Rwy 36L: Standard with minimum climb of 500' per NM to 1400.

NOTE: Chart not to scale.

DEPARTURE ROUTE DESCRIPTION

SEE ADDITIONAL REQUIREMENTS ON AAUP.

TAKEOFF RWY 5: Climb heading 055° to 1260, then on heading 055° or as assigned by ATC, expect RADAR vectors to LAMDE, thence. . .

TAKEOFF RWYS 18C/L: Climb heading 183° to 1260, then on heading 183° or as assigned by ATC, expect RADAR vectors to LAMDE, thence. . .

TAKEOFF RWY 18R: Climb heading 183° to 1260, then on heading 200° or as assigned by ATC, expect RADAR vectors to LAMDE, thence. . .

TAKEOFF RWY 23: Climb heading 235° to 1260, then on heading 235° or as assigned by ATC, expect RADAR vectors to LAMDE, thence. . .

TAKEOFF RWY 36C: Climb heading 003° to 1260, then on heading 330° or as assigned by ATC, expect RADAR vectors to LAMDE, thence. . .

TAKEOFF RWY 36L: Climb heading 003° to 1260, then on heading 315° or as assigned by ATC, expect RADAR vectors to LAMDE, thence. . .

TAKEOFF RWY 36R: Climb heading 003° to 1260, then on heading 025° or as assigned by ATC, expect RADAR vectors to LAMDE, thence. . .

. . .on depicted route to LILLS. Maintain 8000. Expect clearance to filed altitude within 10 minutes after departure.

LILLS TWO DEPARTURE (RNAV)

SE-2, 22 FEB 2024 to 21 MAR 2024

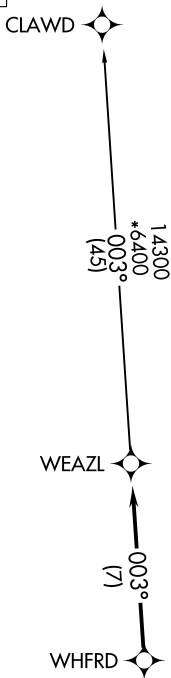
SE-2, 22 FEB 2024 to 21 MAR 2024

WEAZL FOUR DEPARTURE (RNAV)

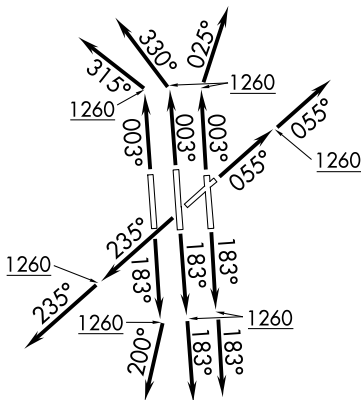
CHARLOTTE, NORTH CAROLINA

**TOP ALTITUDE:
8000**

D-ATIS DEP 132.1
 CLNC DEL 127.15 348.6
 CPDLC
 GND CON 121.8 348.6 (WEST)
 121.9 348.6 (EAST)
 CHARLOTTE TOWER 118.1 257.8 (Rwys 18L-36R)
 126.4 257.8 (Rwy 18C-36C)
 133.35 257.8 (Rwy 18R-36L)
 CHARLOTTE DEP CON 120.5 257.2



- NOTE: For turbojets only.
- NOTE: DME/DME/IRU or GPS required.
- NOTE: RNAV 1.
- NOTE: RADAR required.
- NOTE: If unable to accept climb rates, advise ATC on initial contact.
- NOTE: Accelerate to 250K, if unable advise ATC. Upon reaching 10000 MSL, accelerate to and maintain 280K, if unable advise ATC.



TAKEOFF MINIMUMS

- Rwys 18C/L/R, 23, 36C/R: Standard with minimum climb of 500' per NM to 1260.
- Rwy 5: Standard with minimum climb of 500' per NM to 1300.
- Rwy 36L: Standard with minimum climb of 500' per NM to 1400.

(NARRATIVE ON FOLLOWING PAGE)

NOTE: Chart not to scale.

SE-2, 22 FEB 2024 to 21 MAR 2024

SE-2, 22 FEB 2024 to 21 MAR 2024

WEAZL FOUR DEPARTURE (RNAV)



DEPARTURE ROUTE DESCRIPTION SEE ADDITIONAL REQUIREMENTS ON AAUP

TAKEOFF RWY 5: Climb heading 055° to 1260, then on heading 055° or as assigned by ATC, expect RADAR vectors to WHFRD, thence. . .

TAKEOFF RWYS 18C/L: Climb heading 183° to 1260, then on heading 183° or as assigned by ATC, expect RADAR vectors to WHFRD, thence. . .

TAKEOFF RWY 18R: Climb heading 183° to 1260, then on heading 200° or as assigned by ATC, expect RADAR vectors to WHFRD, thence. . .

TAKEOFF RWY 23: Climb heading 235° to 1260, then on heading 235° or as assigned by ATC, expect RADAR vectors to WHFRD, thence. . .

TAKEOFF RWY 36C: Climb heading 003° to 1260, then on heading 330° or as assigned by ATC, expect RADAR vectors to WHFRD, thence. . .

TAKEOFF RWY 36L: Climb heading 003° to 1260, then on heading 315° or as assigned by ATC, expect RADAR vectors to WHFRD, thence. . .

TAKEOFF RWY 36R: Climb heading 003° to 1260, then on heading 025° or as assigned by ATC, expect RADAR vectors to WHFRD, thence. . .

. . . on track 003° to WEAZL, then on CLAWD TRANSITION. Maintain 8000.
Expect clearance to filed altitude within 10 minutes after departure.

CLAWD TRANSITION (WEAZL4.CLAWD)

SE-2, 22 FEB 2024 to 21 MAR 2024

SE-2, 22 FEB 2024 to 21 MAR 2024