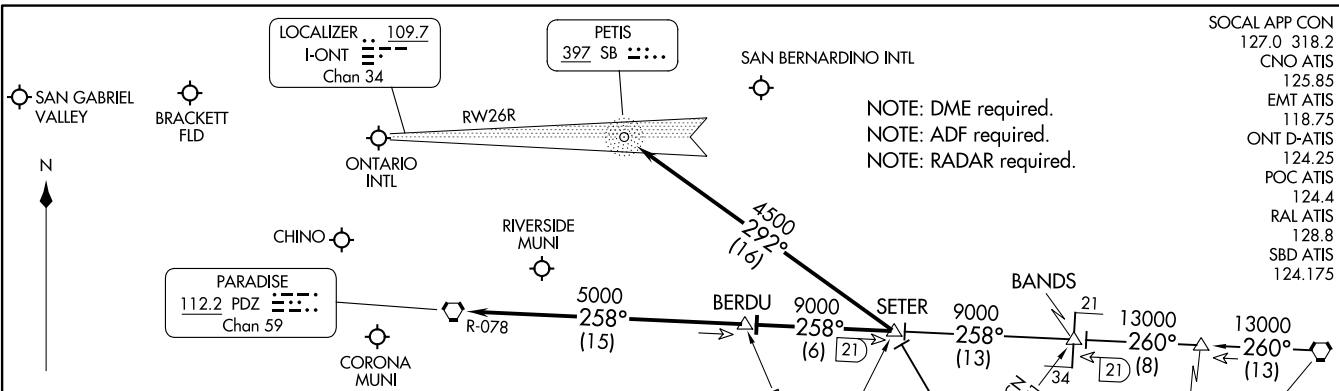


SETER FIVE ARRIVAL
(SETER,SETER5) 17AUG17



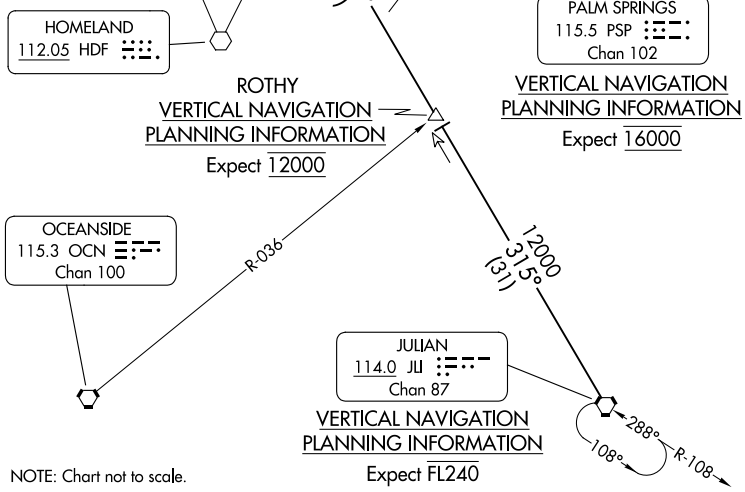
(SETER,SETER5) 23278
SETER FIVE ARRIVAL

ARRIVAL ROUTE DESCRIPTION

JULIAN TRANSITION (JLI.SETER5): From over JLI VORTAC on JLI R-315 to SETER. Thence. . . .
PALM SPRINGS TRANSITION (PSP.SETER5): From over PSP VORTAC on PSP R-260 to BANDS, then on PDZ R-078 to SETER. Thence. . . .

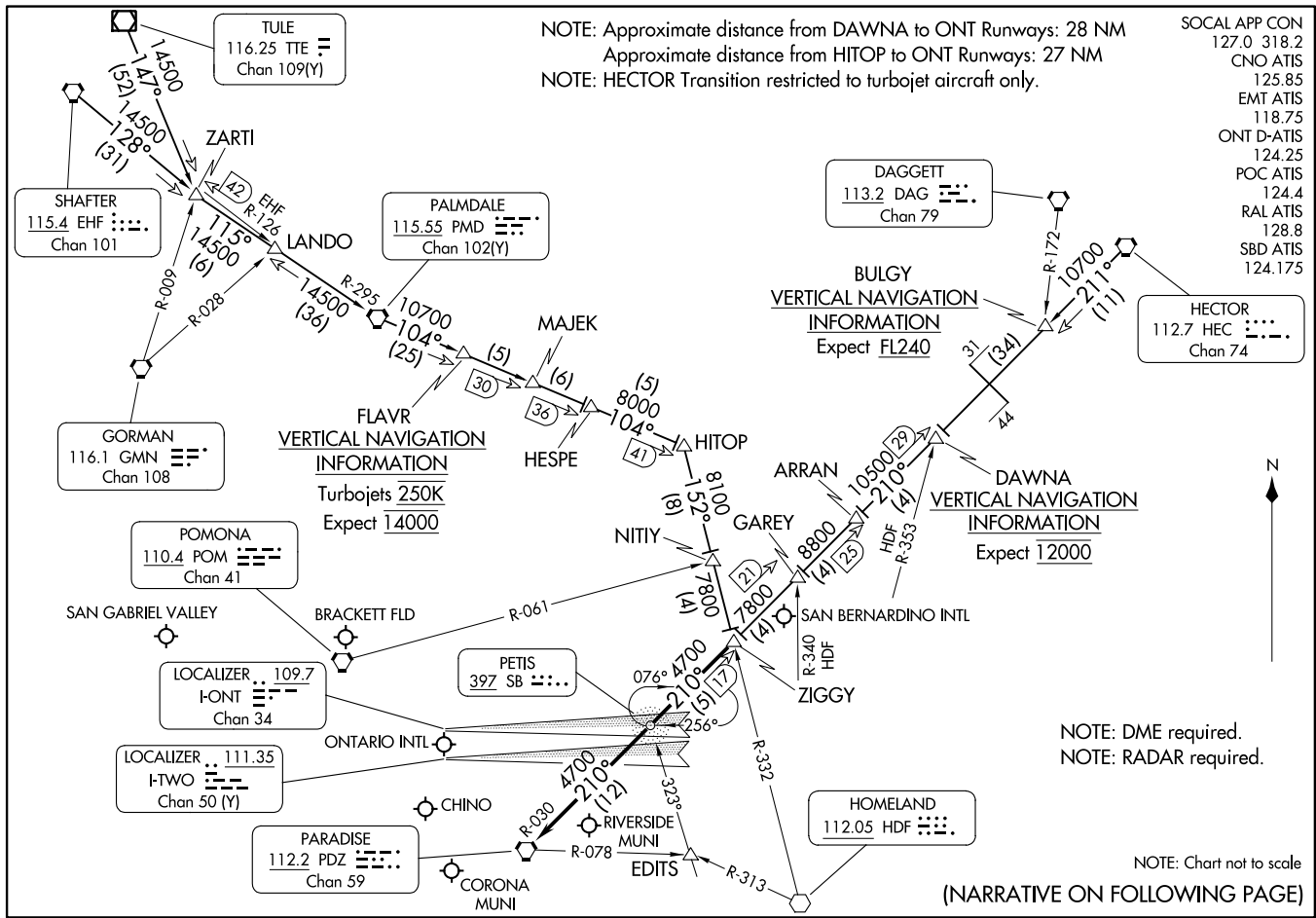
LANDING ONTARIO INTL
RUNWAYS 26L/R: From over SETER on SB NDB 292° course to SB NDB; expect ILS approach.
RUNWAYS 8L/R: From over SETER on PDZ R-078 to BERDU, then on PDZ R-078 to PDZ VORTAC; expect vectors to final approach course.

ALL OTHER AIRPORTS
 From over SETER via PDZ R-078 to BERDU, then on PDZ R-078 to PDZ VORTAC; expect vectors to final approach course.



AL-965 (FAA)
ONTARIO, CALIFORNIA

ONTARIO, CALIFORNIA



SW-3, 22 FEB 2024 to 21 MAR 2024

SW-3, 22 FEB 2024 to 21 MAR 2024

- SOCAL APP CON 127.0 318.2
- CNO ATIS 125.85
- EMT ATIS 118.75
- ONT D-ATIS 124.25
- POC ATIS 124.4
- RAL ATIS 128.8
- SBD ATIS 124.175

NOTE: DME required.
NOTE: RADAR required.

NOTE: Chart not to scale
(NARRATIVE ON FOLLOWING PAGE)

ARRIVAL ROUTE DESCRIPTION

HECTOR TRANSITION (HEC.ZIGGY7): From over HEC VORTAC on HEC R-211 and PDZ R-030 to ZIGGY. Thence

PALMDALE TRANSITION (PMD.ZIGGY7): From over PMD VORTAC on PMD R-104 to HITOP, then on HDF R-332 to ZIGGY. Thence

SHAFTER TRANSITION (EHF.ZIGGY7): From over EHF VORTAC on EHF R-128 and PMD R-295 to PMD VORTAC, then on PMD R-104 to HITOP, then on HDF R-332 to ZIGGY. Thence

TULE TRANSITION (TTE.ZIGGY7): From over TTE VOR/DME on TTE R-147 and PMD R-295 to PMD VORTAC, then on PMD R-104 to HITOP, then on HDF R-332 to ZIGGY. Thence

LANDING ONTARIO INTL

RUNWAYS 8L/R: From over ZIGGY on PDZ R-030 to PDZ VORTAC; expect RADAR vectors to final approach course.

RUNWAYS 26 L/R: From over ZIGGY direct PETIS NDB or on PDZ R-030 to PETIS; expect RADAR vectors for ILS approach.

ALL OTHER AIRPORTS

From over ZIGGY on PDZ R-030 to PDZ VORTAC; expect RADAR vectors to final approach course.

SW-3, 22 FEB 2024 to 21 MAR 2024

SW-3, 22 FEB 2024 to 21 MAR 2024