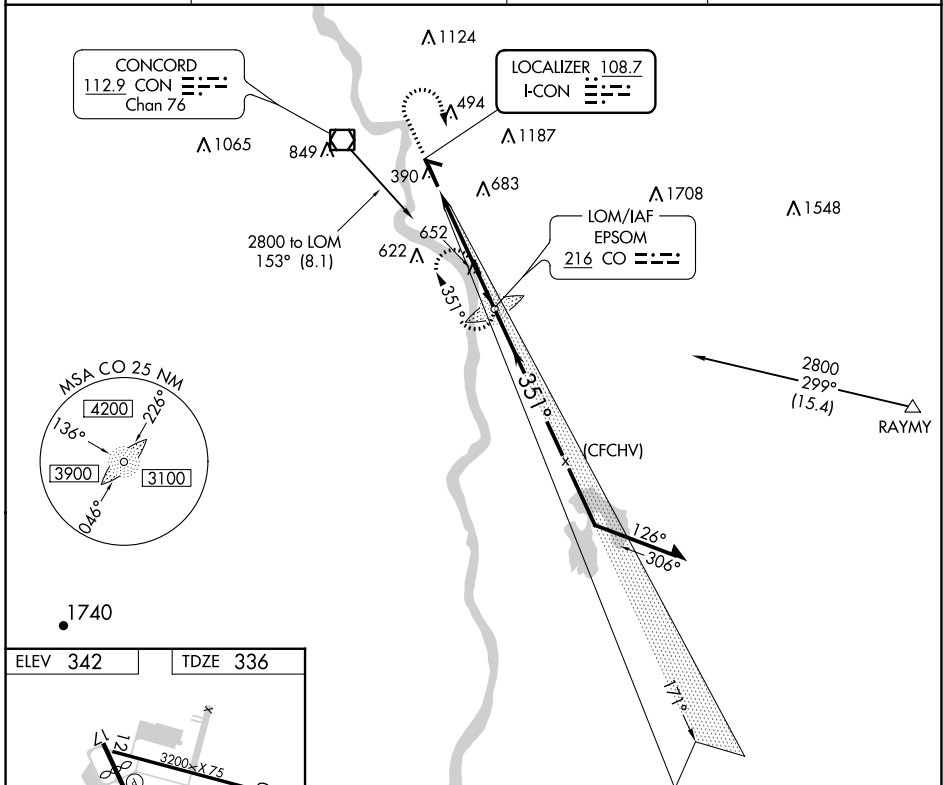


LOC I-CON 108.7	APP CRS 351°	Rwy Idg TDZE Apt Elev	6005 336 342
---------------------------	------------------------	-----------------------------	---

ILS or LOC RWY 35

CONCORD MUNI (CON)

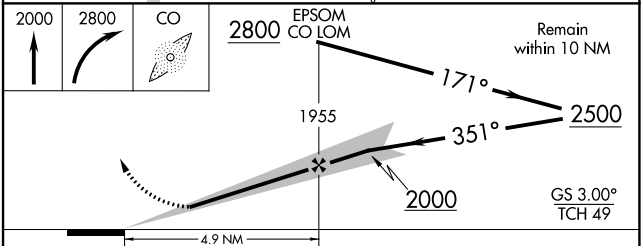
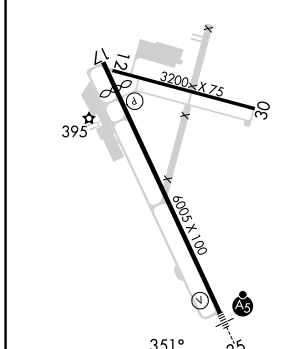
ADF required.		MALSR	MISSED APPROACH: Climb to 2000 then climbing right turn to 2800 direct EPSOM LOM and hold, continue climb-in-hold to 2800.
Circling Rwy 12, 17, 30 NA at night.			
ASOS 132.325	BOSTON APP CON 127.35 269.075	CLNC DEL 133.65	UNICOM 122.7 (CTAF) 0



NE-1, 22 FEB 2024 to 21 MAR 2024

NE-1, 22 FEB 2024 to 21 MAR 2024

ELEV 342	TDZE 336
----------	----------



MIRL Rwy 12-30	
HIRL Rwy 17-35	
FAF to MAP 4.9 NM	
Knots	60 90 120 150 180
Min:Sec	4:54 3:16 2:27 1:58 1:38
<input checked="" type="checkbox"/> CIRCLING	
CATEGORY	A B C D
S-ILS 35	586-1/2 250 (300-1/2)
S-LOC 35	920-1/2 584 (600-1/2) 920-1/4 584 (600-1/4)
	940-1 1080-1 1500-3 1158 (1200-3)
	598 (600-1) 738 (800-1)

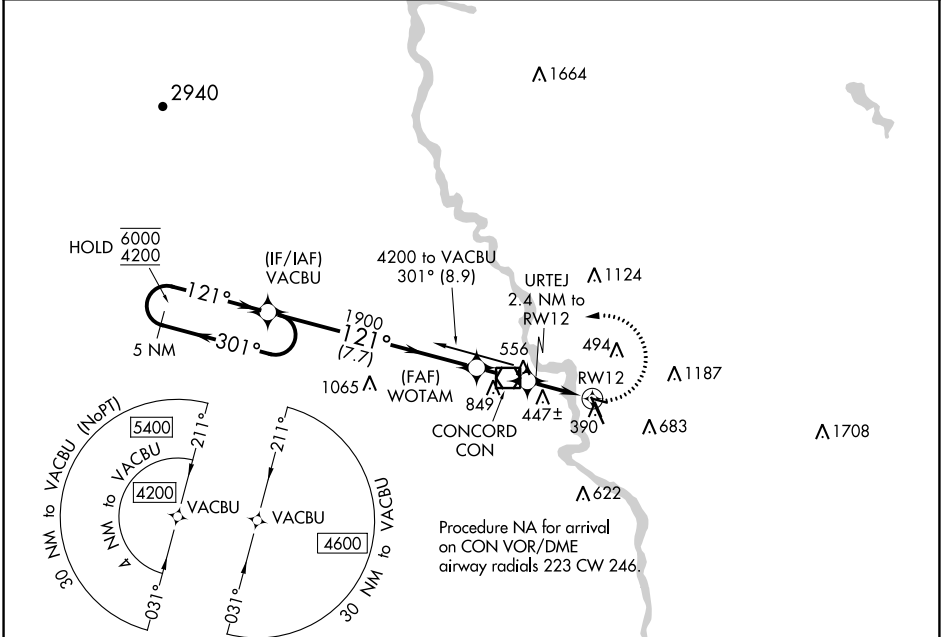
APP CRS	Rwy Idg	3200
121°	TDZE	342
	Apt Elev	342

RNAV (GPS) RWY 12

CONCORD MUNI (CON)

RNP APCH.	MISSED APPROACH: Climbing left turn to 4200 direct VACBU and hold, continue climb-in-hold to 4200.
<p>▼ Rwy 12 helicopter visibility reduction below 1 SM NA.</p> <p>▲ Straight-in Rwy 12 NA at night, Circling Rwy 12, 17, 30 NA at night.</p>	

ASOS 132.325	BOSTON APP CON 127.35 269.075	CLNC DEL 133.65	UNICOM 122.7 (CTAF) 0
------------------------	---	---------------------------	--

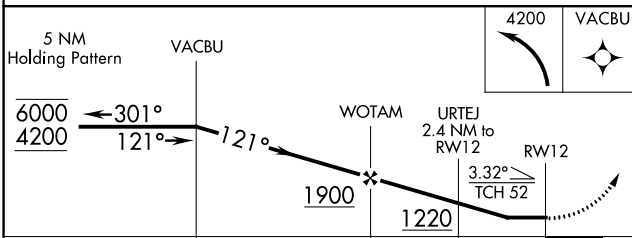
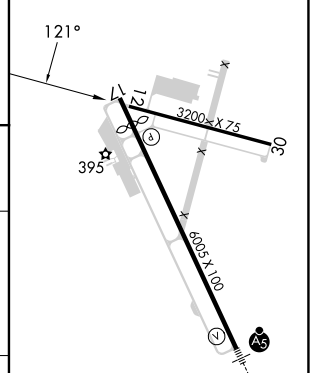


Procedure NA for arrival on CON VOR/DME airway radials 223 CW 246.

NE-1, 22 FEB 2024 to 21 MAR 2024

NE-1, 22 FEB 2024 to 21 MAR 2024

ELEV 342	TDZE 342
----------	----------



CATEGORY	A	B	C	D
LNAV MDA	1040-1	698 (700-1)	1040-2	698 (700-2)
CIRCLING	1040-1 698 (700-1)	1080-1 738 (800-1)	1500-3	1158 (1200-3)

MIRL Rwy 12-30 0
HIRL Rwy 17-35 0

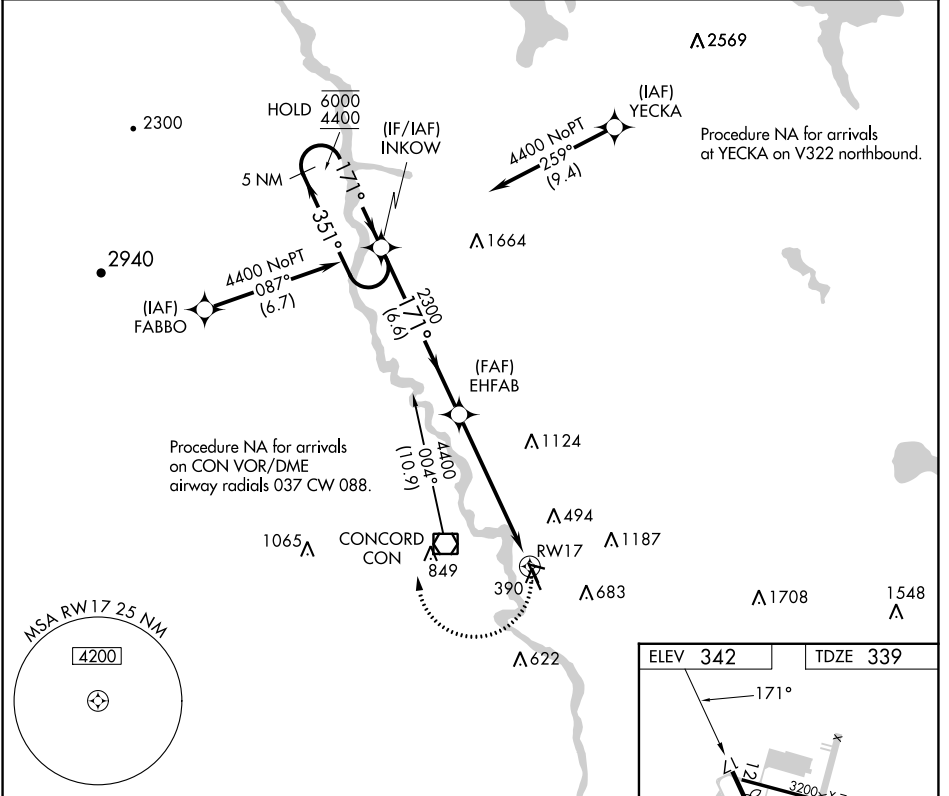
APP CRS	Rwy Idg	5364
171°	TDZE	339
	Apt Elev	342

RNAV (GPS) RWY 17

CONCORD MUNI (CON)

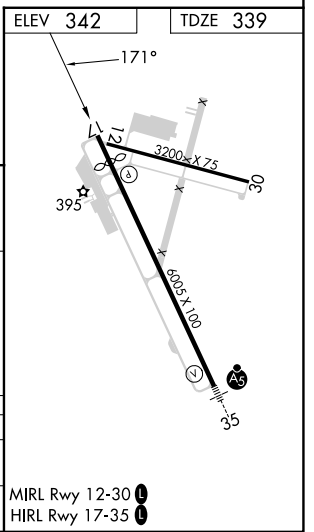
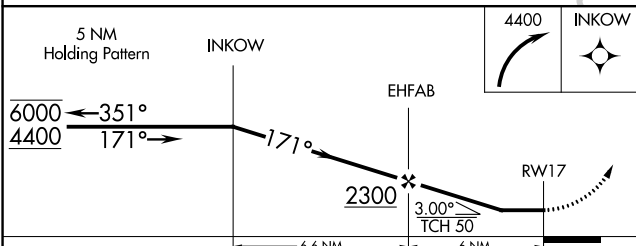
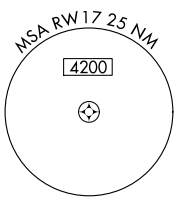
RNP APCH.	MISSED APPROACH: Climbing right turn to 4400 direct INKOW and hold, continue climb-in-hold to 4400.
<p>▼ Straight-in Rwy 17 NA at night, Circling Rws 12, 17, 30 NA at night.</p> <p>▲ Rwy 17 helicopter visibility reduction below 1 SM NA.</p>	

ASOS 132.325	BOSTON APP CON 127.35 269.075	CLNC DEL 133.65	UNICOM 122.7 (CTAF) 0
------------------------	---	---------------------------	---------------------------------



NE-1, 22 FEB 2024 to 21 MAR 2024

NE-1, 22 FEB 2024 to 21 MAR 2024



CATEGORY	A	B	C	D
LNAV MDA	1000-1	661 (700-1)	1000-1 $\frac{7}{8}$	661 (700-1 $\frac{7}{8}$)
CIRCLING	1000-1 658 (700-1)	1080-1 738 (800-1)	1500-3	1158 (1200-3)

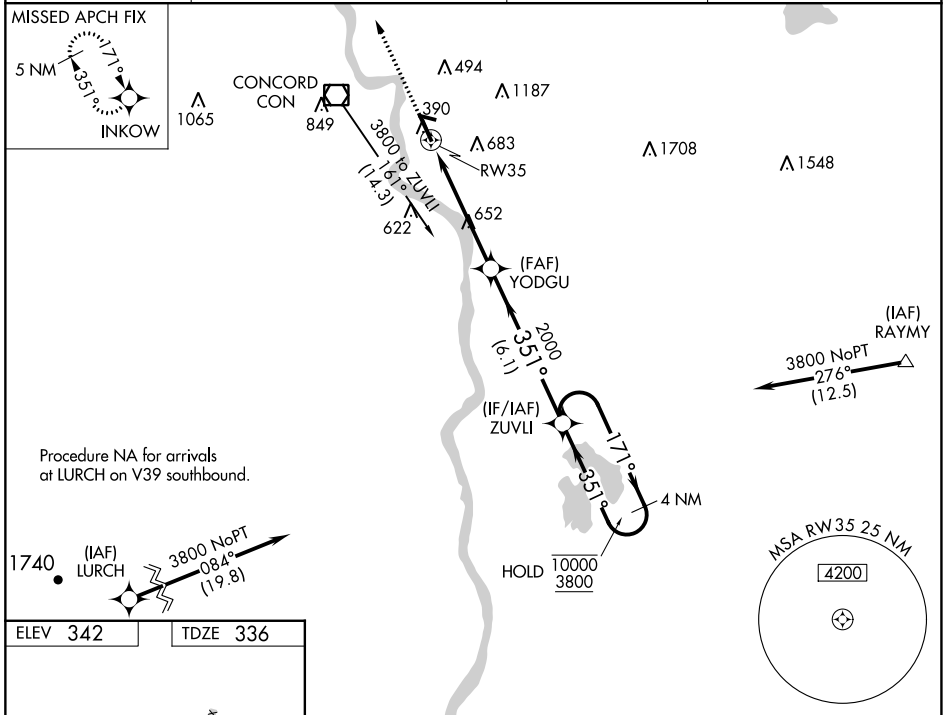
WAAS CH 90112 W35A	APP CRS 351°	Rwy ldg 6005 TDZE 336 Apt Elev 342
--	------------------------	---

RNAV (GPS) RWY 35

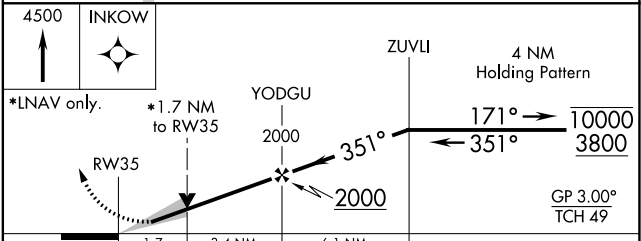
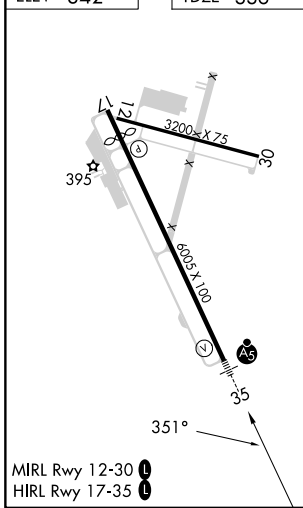
CONCORD MUNI (CON)

RNP APCH.	MALSR	MISSED APPROACH: Climb to 4500 direct INKOW and hold, continue climb-in-hold to 4500.
 Circling Rwy 12, 17, 30 NA at night. For inop ALS, increase LNAV/VNAV visibility to 1 3/4 SM, LNAV Cats C and D visibility to 1 3/4 SM.		

ASOS 132.325	BOSTON APP CON 127.35 269.075	CLNC DEL 133.65	UNICOM 122.7 (CTAF) 0
------------------------	---	---------------------------	---------------------------------



ELEV 342	TDZE 336
----------	----------



CATEGORY	A	B	C	D
LPV DA	586-1/2 250 (300-1/2)			
LNAV/VNAV DA	967-1 3/8 631 (700-1 3/8)			
LNAV MDA	940-1/2	604 (600-1/2)	940-1 3/8	604 (600-1 3/8)
CIRCLING	940-1 598 (600-1)	1080-1 738 (800-1)	1500-3	1158 (1200-3)

NE-1, 22 FEB 2024 to 21 MAR 2024

NE-1, 22 FEB 2024 to 21 MAR 2024

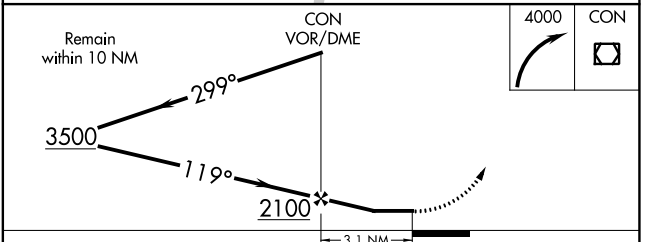
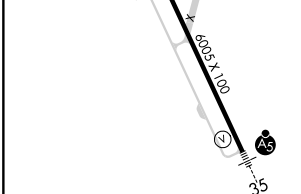
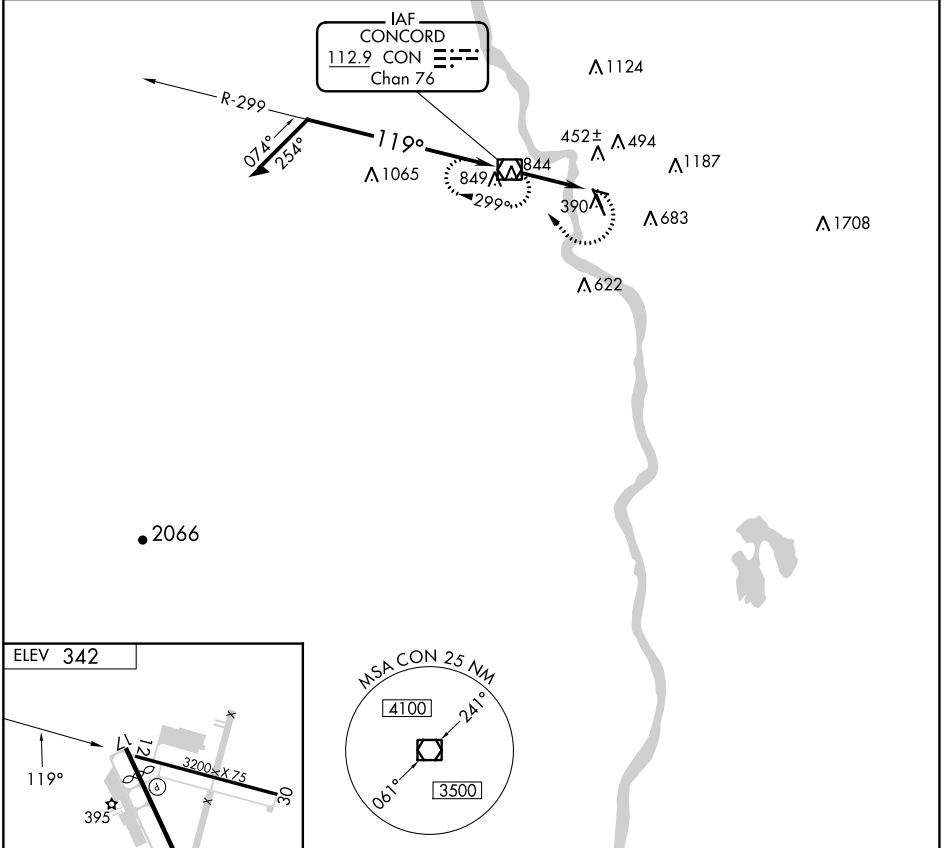
VOR/DME CON 112.9 Chan 76	APP CRS 119°	Rwy Idg TDZE Apt Elev	N/A N/A 342
--	------------------------	-----------------------------	--

VOR-A

CONCORD MUNI (CON)

⚠ Circling Rwy 12, 17, 30 NA at night.	MISSED APPROACH: Climbing right turn to 4000 direct CON VOR/DME and hold, continue climb-in-hold to 4000.
---	---

ASOS 132.325	BOSTON APP CON 127.35 269.075	CLNC DEL 133.65	UNICOM 122.7 (CTAF) 0
------------------------	---	---------------------------	---------------------------------



MIRL Rwy 12-30 0

HIRL Rwy 17-35 0

FAF to MAP 3.1 NM					
Knots	60	90	120	150	180
Min:Sec	3:06	2:04	1:33	1:14	1:02

CATEGORY	A	B	C	D
ⓐ CIRCLING	940-1 598 (600-1)	1080-1 738 (800-1)	1500-3 1158 (1200-3)	