

WAAS CH 93537 W14A	APP CRS 139°	Rwy Idg TDZE 3858 Apt Elev 3858
--	------------------------	---

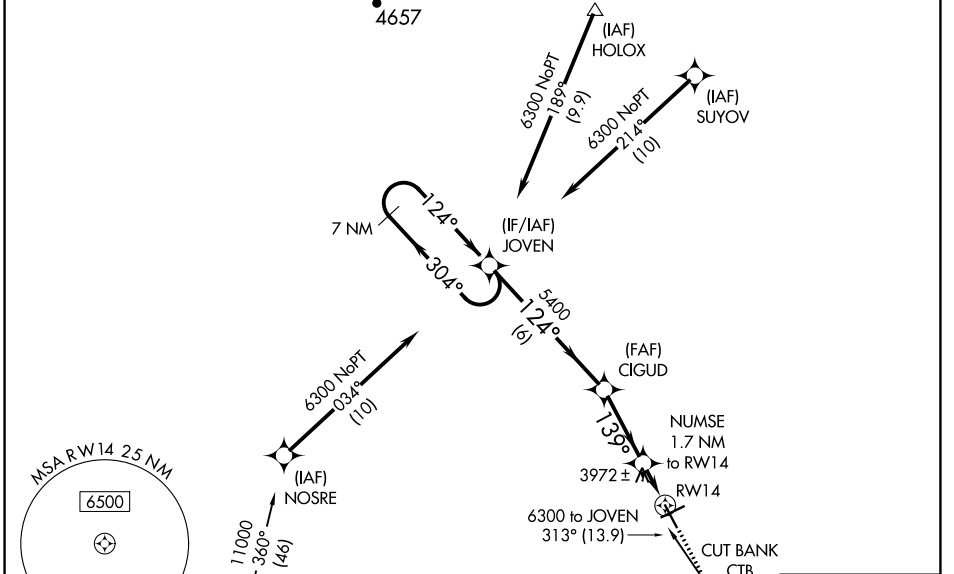
RNAV (GPS) RWY 14

CUT BANK INTL (CTB)

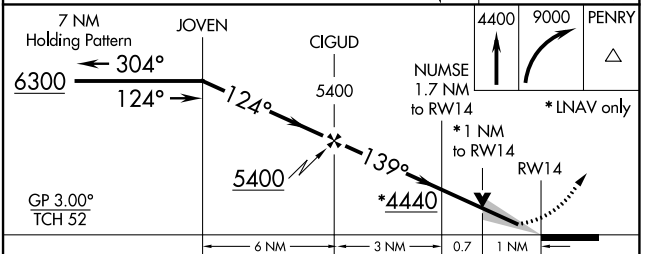
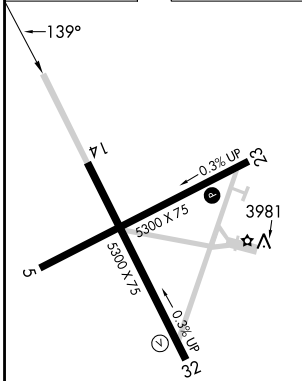
⚠ For uncompensated Baro-VNAV systems, LNAV/VNAV NA below -25°C (-13°F) or above 51°C (124°F).
❄ -29°C DME/DME RNP-0.3 NA.

MISSED APPROACH: Climb to 4400 then climbing right turn to 9000 direct PENRY and hold.

ASOS 119.025	SALT LAKE CITY CENTER 133.4 285.4	UNICOM 123.0 (CTAF) 0
------------------------	---	---------------------------------



ELEV 3858	TDZE 3858
-----------	-----------



CATEGORY	A	B	C	D
LPV DA		4058-1	200 (200-1)	
LNAV/VNAV DA		4108-1	250 (300-1)	
LNAV MDA	4240-1	382 (400-1)	4240-1½	382 (400-1½)
C CIRCLING	4280-1 422 (500-1)	4320-1 462 (500-1)	4400-1½ 542 (600-1½)	4620-2½ 762 (800-2½)

REIL Rwy 32 **0**
MIRL Rwy 5-23 and 14-32 **0**

NW-1, 22 FEB 2024 to 21 MAR 2024

NW-1, 22 FEB 2024 to 21 MAR 2024

WAAS CH 53337 W23A	APP CRS 231°	Rwy Idg TDZE Apt Elev	5300 3840 3858
--	------------------------	-----------------------------	---

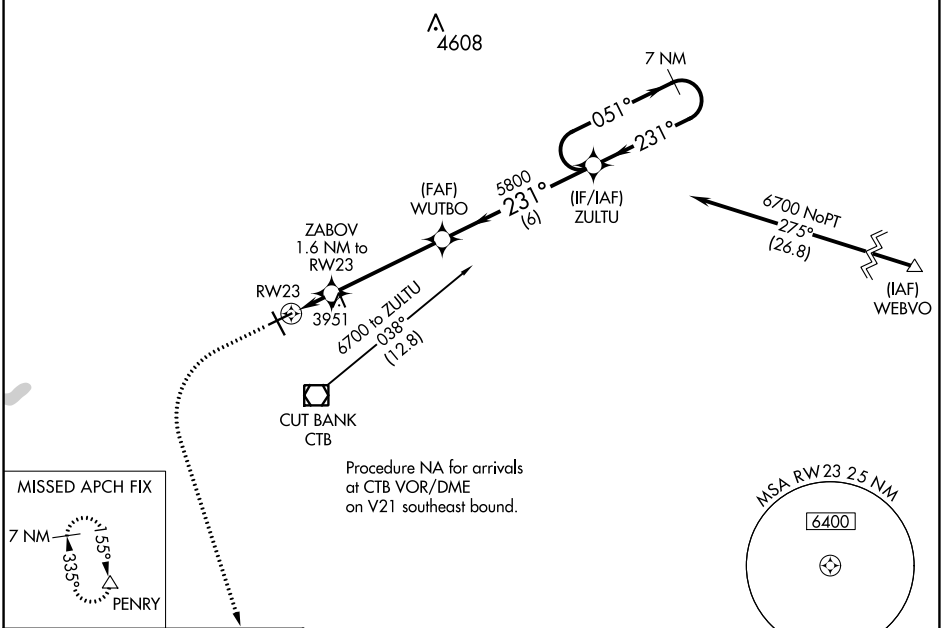
RNAV (GPS) RWY 23

CUT BANK INTL (CTB)

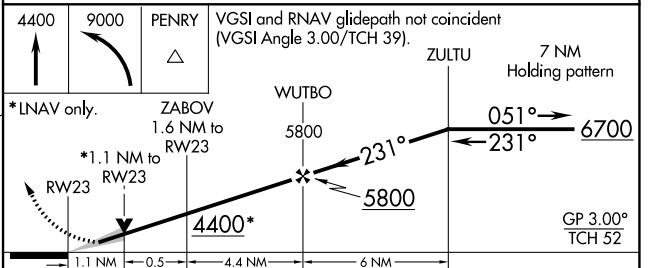
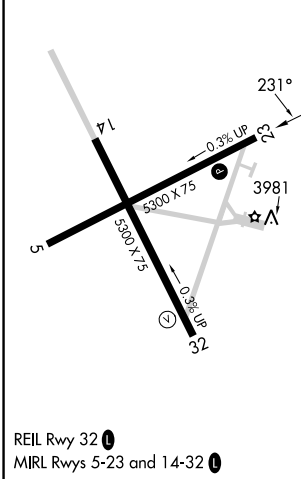
⚠ For uncompensated Baro-VNAV systems, LNAV/VNAV NA below -25°C (-13°F) or above 51°C (124°F).
⚠ -29°C DME/DME RNP-0.3 NA.

MISSED APPROACH: Climb to 4400 then climbing left turn to 9000 direct PENRY and hold.

ASOS 119.025	SALT LAKE CITY CENTER 133.4 285.4	UNICOM 123.0 (CTAF) 0
------------------------	---	---------------------------------



ELEV 3858	TDZE 3840
------------------	------------------



CATEGORY	A	B	C	D
LPV DA		4040-1	200 (200-1)	
LNAV/VNAV DA		4090-1	250 (300-1)	
LNAV MDA		4220-1	380 (400-1)	
CIRCLING	4280-1 422 (500-1)	4320-1 462 (500-1)	4400-1½ 542 (600-1½)	4620-2½ 762 (800-2½)

NW-1, 22 FEB 2024 to 21 MAR 2024

NW-1, 22 FEB 2024 to 21 MAR 2024

WAAS CH 99337 W32A	APP CRS 319°	Rwy Idg TDZE Apt Elev	5300 3851 3858
--	------------------------	-----------------------------	---

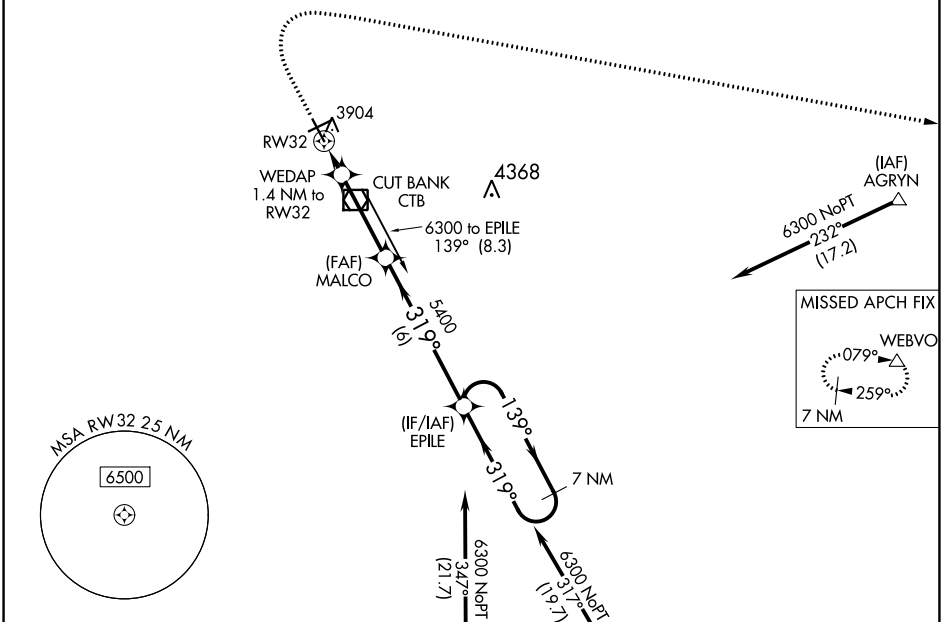
RNAV (GPS) RWY 32

CUT BANK INTL (CTB)

⚠ For uncompensated Baro-VNAV systems, LNAV/VNAV NA below -25°C (-13°F) or above 51°C (124°F).
❄ -29°C DME/DME RNP-0.3 NA.

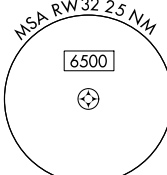
MISSED APPROACH: Climb to 4400 then climbing right turn to 11000 direct WEBVO and hold.

ASOS 119.025	SALT LAKE CITY CENTER 133.4 285.4	UNICOM 123.0 (CTAF) 0
------------------------	---	---------------------------------

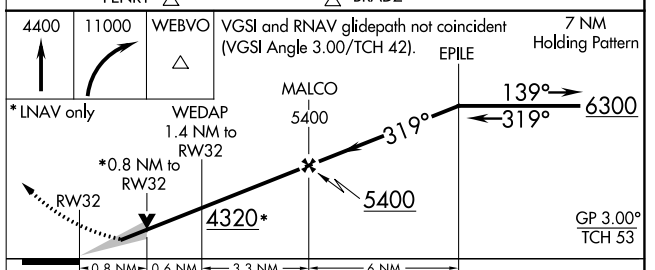
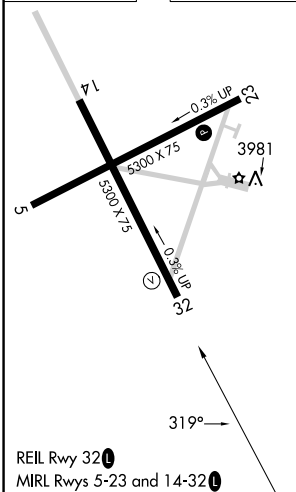


NW-1, 22 FEB 2024 to 21 MAR 2024

NW-1, 22 FEB 2024 to 21 MAR 2024



ELEV 3858	TDZE 3851
-----------	-----------



CATEGORY	A	B	C	D
LPV DA		4051-1	200 (200-1)	
LNAV/VNAV DA		4101-1	250 (300-1)	
LNAV MDA		4160-1	309 (400-1)	
C CIRCLING	4280-1 422 (500-1)	4320-1 462 (500-1)	4400-1½ 542 (600-1½)	4620-2½ 762 (800-2½)

WAAS CH 86737 W05A	APP CRS 051°	Rwy Idg TDZE Apt Elev	5300 3854 3858
--	------------------------	-----------------------------	---

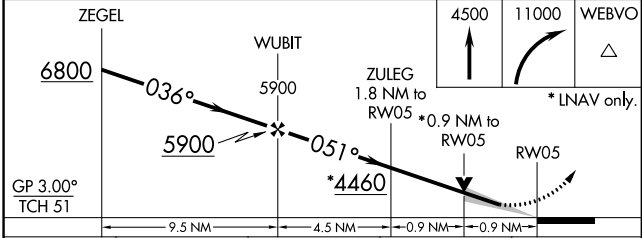
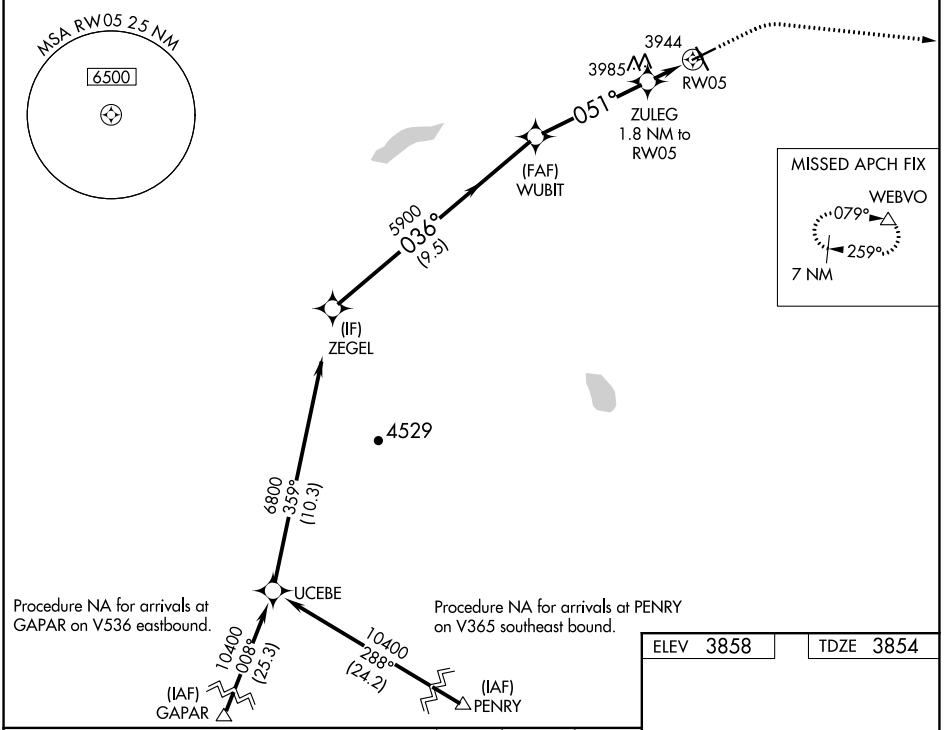
RNAV (GPS) RWY 5

CUT BANK INTL (CTB)

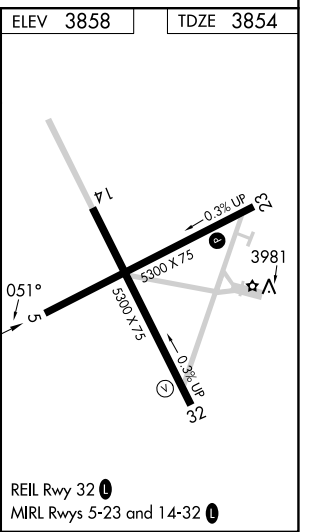
⚠ For uncompensated Baro-VNAV systems, LNAV/VNAV NA below -25°C (-13°F) or above 51°C (124°F).
❄ -29°C
 DME/DME RNP-0.3 NA.

MISSED APPROACH: Climb to 4500 then climbing right turn to 11000 direct WEBVO and hold.

ASOS 119.025	SALT LAKE CITY CENTER 133.4 285.4	UNICOM 123.0 (CTAF) 0
------------------------	---	---------------------------------



CATEGORY	A	B	C	D
LPV DA		4054-1	200 (200-1)	
LNAV/VNAV DA		4104-1	250 (300-1)	
LNAV MDA		4200-1	346 (400-1)	
C CIRCLING	4280-1 422 (500-1)	4320-1 462 (500-1)	4400-1½ 542 (600-½)	4620-2½ 762 (800-2½)



NW-1, 22 FEB 2024 to 21 MAR 2024

NW-1, 22 FEB 2024 to 21 MAR 2024

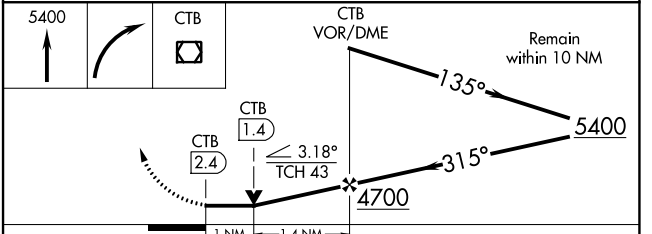
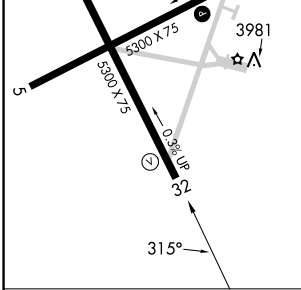
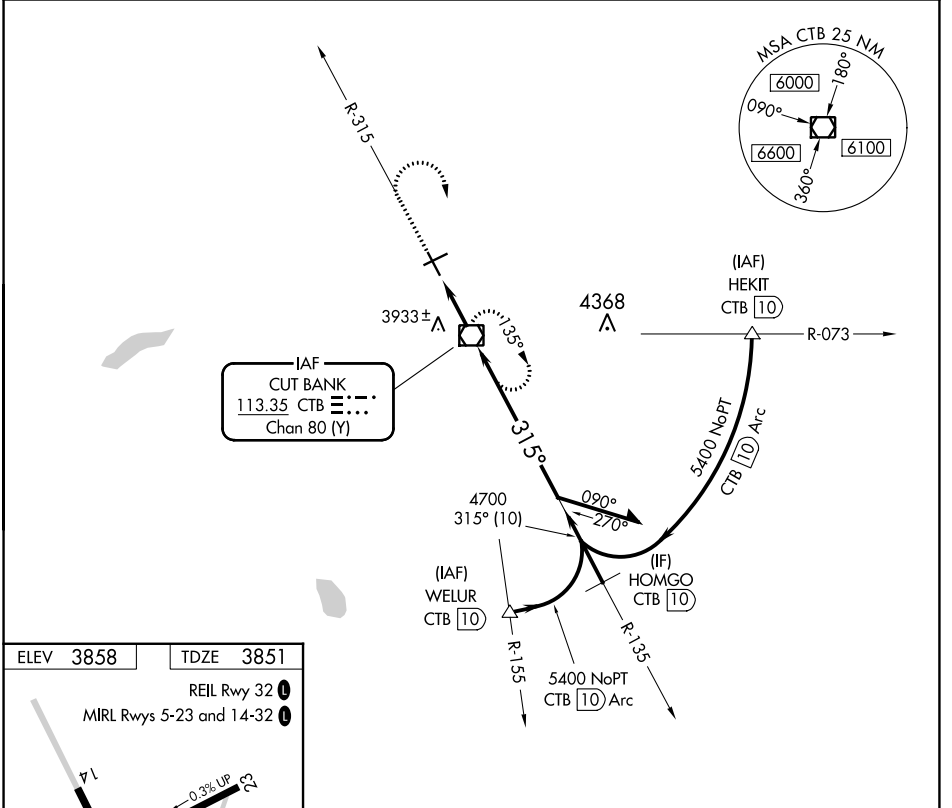
VOR/DME CTB	APP CRS	Rwy Idg	5300
113.35	315°	TDZE	3851
Chan 80 (Y)		Apt Elev	3858

VOR RWY 32

CUT BANK INTL (CTB)

<p>-29°C</p>	<p>MISSED APPROACH: Climb to 5400 then right turn direct CTB VOR/DME and hold.</p>
--------------	--

ASOS 119.025	SALT LAKE CITY CENTER 133.4 285.4	UNICOM 123.0 (CTAF)
------------------------	---	-------------------------------



CATEGORY	A	B	C	D
S-32	4200-1 349 (400-1)			
<input checked="" type="checkbox"/> CIRCLING	4280-1 422 (500-1)	4320-1 462 (500-1)	4400-1½ 542 (600-1½)	4620-2½ 762 (800-2½)

NW-1, 22 FEB 2024 to 21 MAR 2024

NW-1, 22 FEB 2024 to 21 MAR 2024