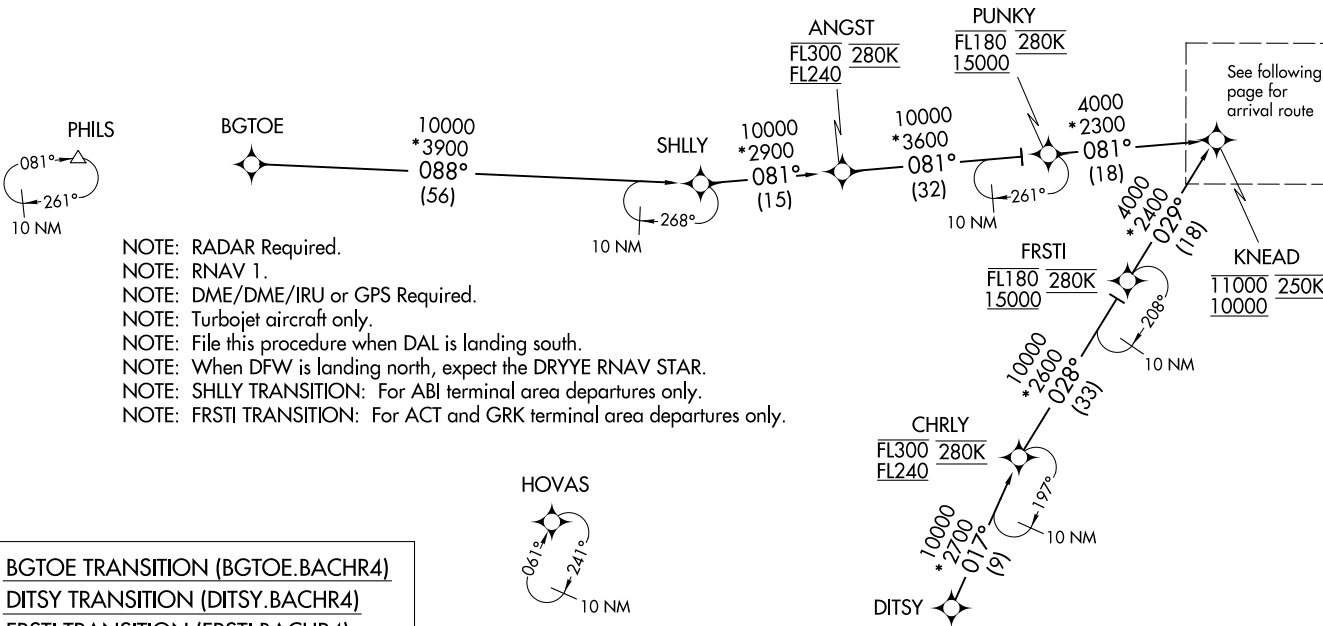


BACHR FOUR ARRIVAL (RNAV) Transition Routes
(KNEAD.BACHR4) 26MAY16

(KNEAD.BACHR4) 21112
BACHR FOUR ARRIVAL (RNAV) Transition Routes
AL-106 (FAA)

REGIONAL APP CON
135.975 379.9
D-ATIS
120.15



- NOTE: RADAR Required.
- NOTE: RNAV 1.
- NOTE: DME/DME/IRU or GPS Required.
- NOTE: Turbojet aircraft only.
- NOTE: File this procedure when DAL is landing south.
- NOTE: When DFW is landing north, expect the DRYYE RNAV STAR.
- NOTE: SHLLY TRANSITION: For ABl terminal area departures only.
- NOTE: FRSTI TRANSITION: For ACT and GRK terminal area departures only.

- BGTOE TRANSITION (BGTOE.BACHR4)
- DITSY TRANSITION (DITSY.BACHR4)
- FRSTI TRANSITION (FRSTI.BACHR4)
- SHLLY TRANSITION (SHLLY.BACHR4)



(NOTES ON THE FOLLOWING PAGE)
(NARRATIVE ON THE FOLLOWING PAGE)

NOTE: Chart not to scale.

DALLAS, TEXAS
DALLAS LOVE FLD (DAL)

DALLAS LOVE FLD (DAL)
DALLAS, TEXAS

(KNEAD.BACHR4) 21112

AL-106 (FAA)

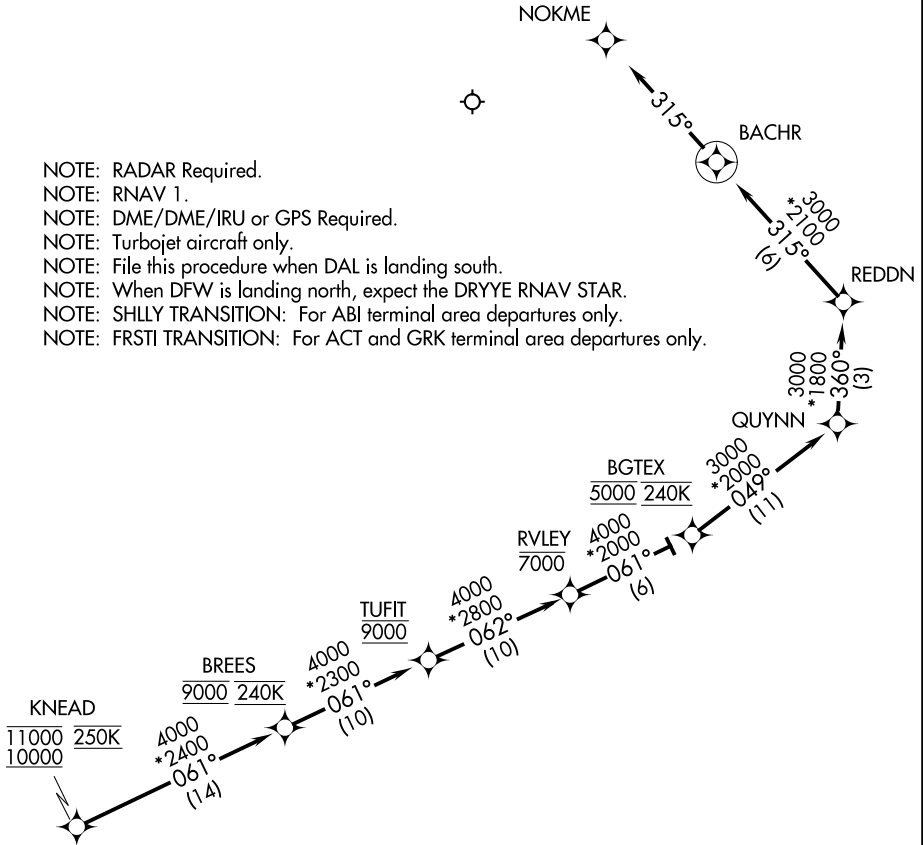
DALLAS LOVE FLD (DAL)

BACHR FOUR ARRIVAL (RNAV) Arrival Route

DALLAS, TEXAS

REGIONAL APP CON
135.975 379.9
D-ATIS
120.15

- NOTE: RADAR Required.
- NOTE: RNAV 1.
- NOTE: DME/DME/IRU or GPS Required.
- NOTE: Turbojet aircraft only.
- NOTE: File this procedure when DAL is landing south.
- NOTE: When DFV is landing north, expect the DRYVE RNAV STAR.
- NOTE: SHLLY TRANSITION: For ABI terminal area departures only.
- NOTE: FRSTI TRANSITION: For ACT and GRK terminal area departures only.



SC-2, 22 FEB 2024 to 21 MAR 2024

SC-2, 22 FEB 2024 to 21 MAR 2024

NOTE: Chart not to scale.

ARRIVAL ROUTE DESCRIPTION

From KNEAD on track 061° to cross BREES at 9000 and at 240K, then on track 061° to cross TUFIT at 9000, then on track 062° to cross RVLEY at or below 7000, then on track 061° to cross BGTEX at 5000 and at 240K, then on track 049° to QUYNN, then on track 360° to REDDN, then on track 315° to BACHR, then on track 315°.

Expect RADAR vectors to final approach course.

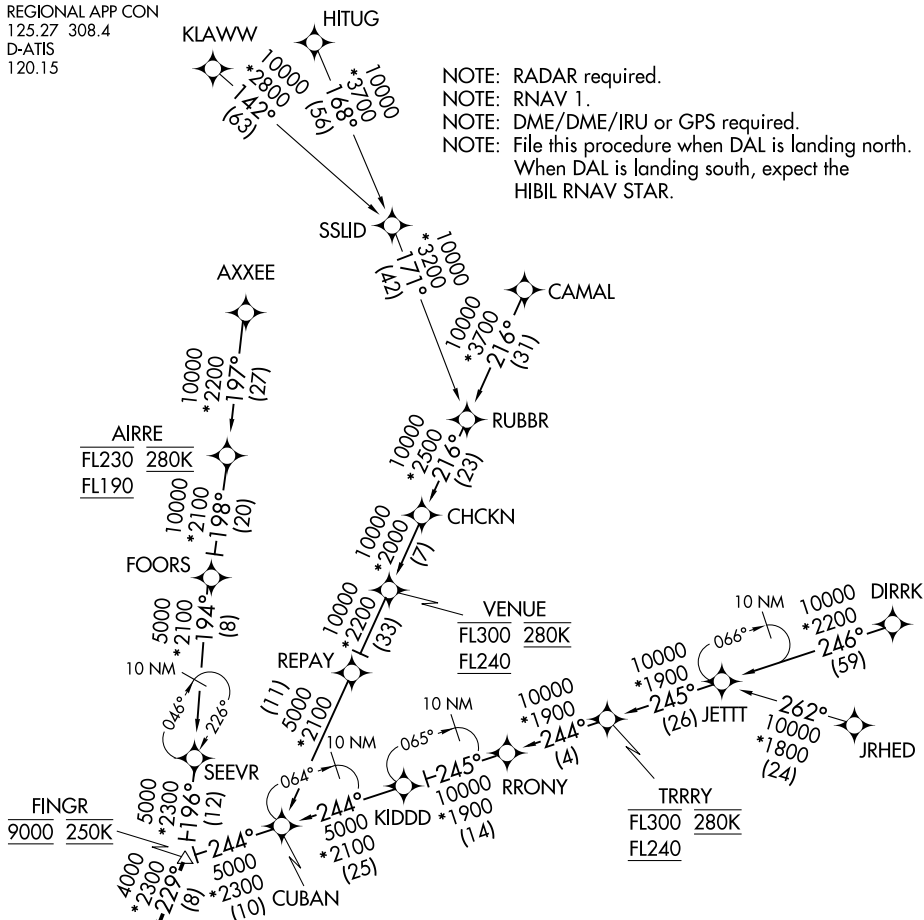
BACHR FOUR ARRIVAL (RNAV) Arrival Route
(KNEAD.BACHR4) 26MAY16

DALLAS, TEXAS
DALLAS LOVE FLD (DAL)

CRIKT ONE ARRIVAL (RNAV)

REGIONAL APP CON
125.27 308.4
D-ATIS
120.15

NOTE: RADAR required.
NOTE: RNAV 1.
NOTE: DME/DME/IRU or GPS required.
NOTE: File this procedure when DAL is landing north.
When DAL is landing south, expect the HIBIL RNAV STAR.



NOTE: JRHED, RUBBR, and JETT TRANSITIONS: ATC assigned only.
NOTE: AXXEE and RRONY TRANSITIONS: For aircraft filing FL230 and below.
NOTE: AIRRE TRANSITION: For traffic below FL190 only.
NOTE: Aircraft departing the Oklahoma City terminal area file and expect the AIRRE enroute transition.

ARRIVAL ROUTE DESCRIPTION

<u>AIRRE TRANSITION (AIRRE.CRIKT1)</u>	<u>JETT TRANSITION (JETT.CRIKT1)</u>
<u>AXXEE TRANSITION (AXXEE.CRIKT1)</u>	<u>JRHED TRANSITION (JRHED.CRIKT1)</u>
<u>CAMAL TRANSITION (CAMAL.CRIKT1)</u>	<u>KLAWW TRANSITION (KLAWW.CRIKT1)</u>
<u>DIRRK TRANSITION (DIRRK.CRIKT1)</u>	<u>RRONY TRANSITION (RRONY.CRIKT1)</u>
<u>HITUG TRANSITION (HITUG.CRIKT1)</u>	<u>RUBBR TRANSITION (RUBBR.CRIKT1)</u>

From FINGR on track 229° to SLANT, then on track 193° to CRIKT, then on track 193°. Expect RADAR vectors to final approach course.

NOTE: Chart not to scale.

CRIKT ONE ARRIVAL (RNAV)

SC-2, 22 FEB 2024 to 21 MAR 2024

SC-2, 22 FEB 2024 to 21 MAR 2024

DRYEE TWO ARRIVAL (RNAV)
(KNEAD.DRYEE2) 22JUN17

REGIONAL APP CON
135.975 379.9
D-ATIS
120.15

ARRIVAL ROUTE DESCRIPTION

BGTOE TRANSITION (BGTOE.DRYEE2)
DITSY TRANSITION (DITSY.DRYEE2)
FRSTI TRANSITION (FRSTI.DRYEE2)
SHLLY TRANSITION (SHLLY.DRYEE2)

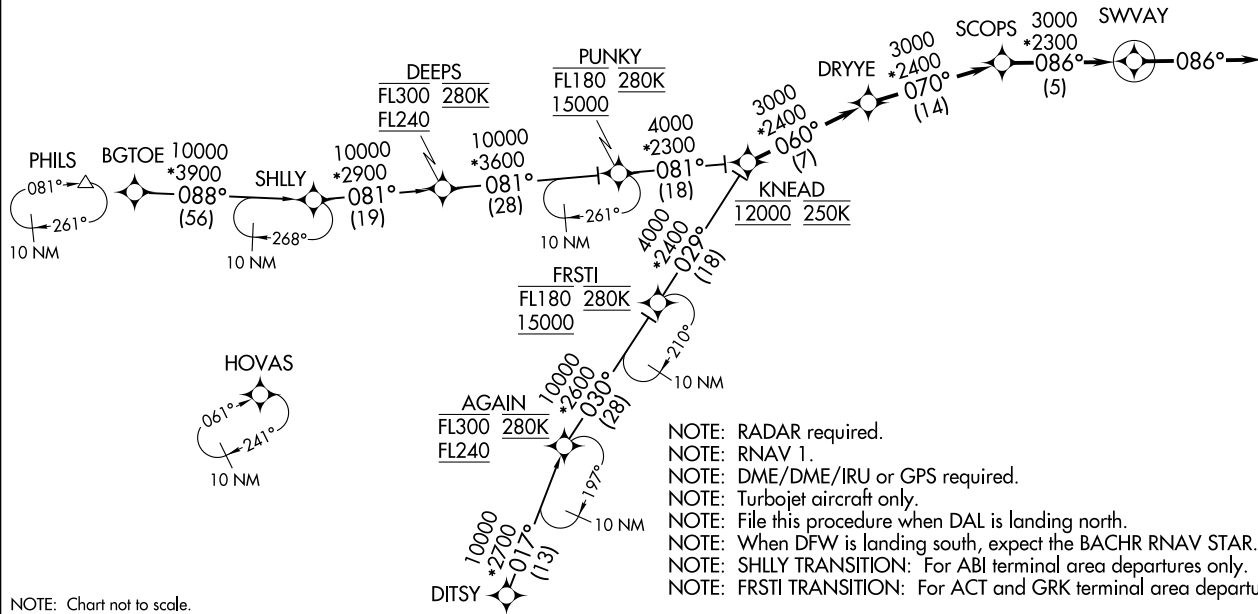
From KNEAD on track 060° to DRYEE, then on track 070° to SCOPES, then on track 086° to SWWAY, then on track 086°. Expect RADAR vectors to final approach course.



(KNEAD.DRYEE2) 21112
DRYEE TWO ARRIVAL (RNAV)

AL-106

DALLAS LOVE FLD (DAL)
DALLAS, TEXAS



- NOTE: RADAR required.
- NOTE: RNAV 1.
- NOTE: DME/DME/IRU or GPS required.
- NOTE: Turbojet aircraft only.
- NOTE: File this procedure when DAL is landing north.
- NOTE: When DFW is landing south, expect the BACHR RNAV STAR.
- NOTE: SHLLY TRANSITION: For ABI terminal area departures only.
- NOTE: FRSTI TRANSITION: For ACT and GRK terminal area departures only.

NOTE: Chart not to scale.

DALLAS, TEXAS
DALLAS LOVE FLD (DAL)

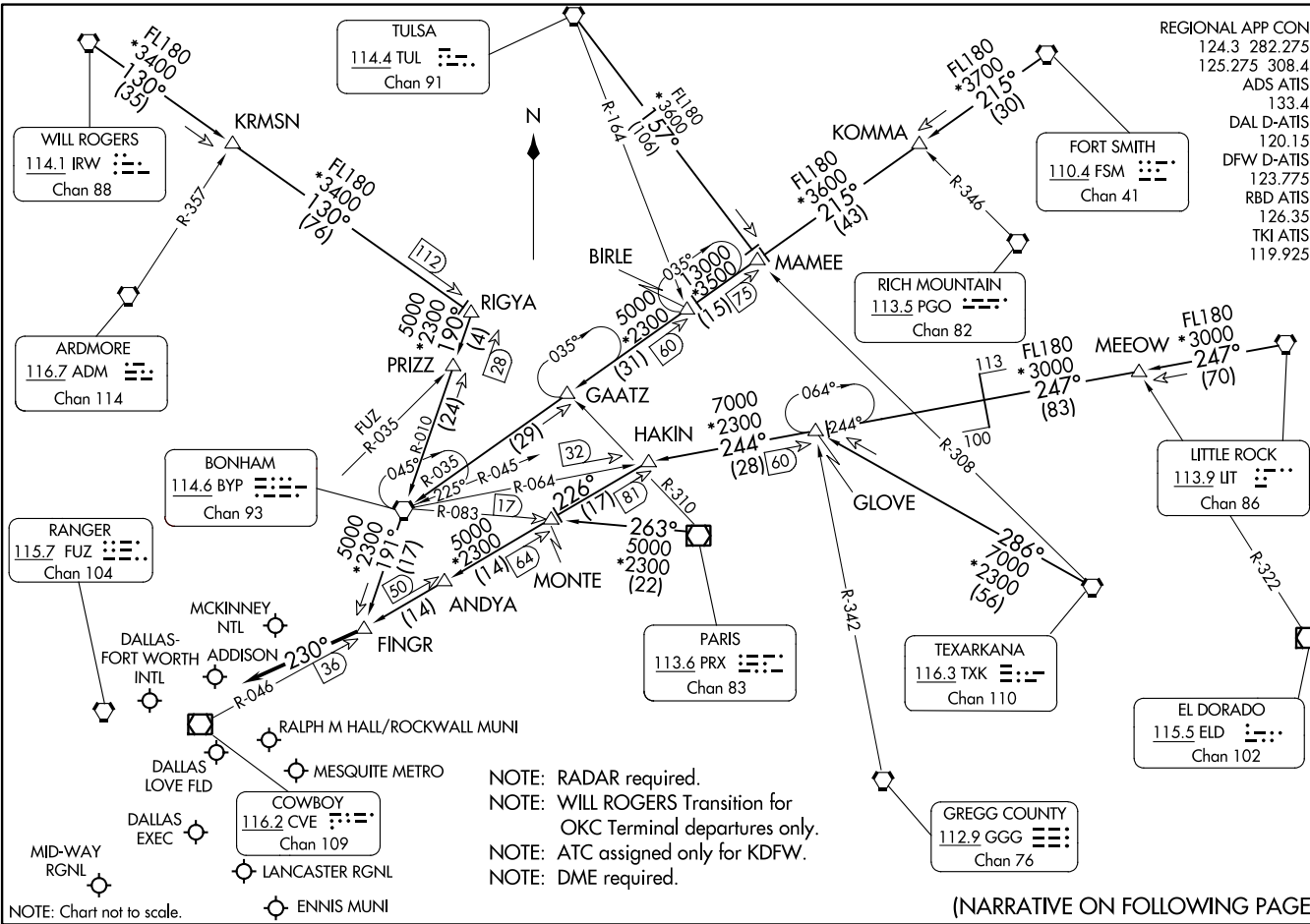
FINGR NINE ARRIVAL
(FINGR, FINGR9) 20APR23

FINGR NINE ARRIVAL
(FINGR, FINGR9) 23334

AL-106 (FAA)

DALLAS-FORT WORTH, TEXAS

DALLAS-FORT WORTH, TEXAS



REGIONAL APP CON
 124.3 282.275
 125.275 308.4
 ADS ATIS
 133.4
 DAL D-ATIS
 120.15
 DFW D-ATIS
 123.775
 RBD ATIS
 126.35
 TKI ATIS
 119.925

NOTE: RADAR required.
 NOTE: WILL ROGERS Transition for OKC Terminal departures only.
 NOTE: ATC assigned only for KDFW.
 NOTE: DME required.

(NARRATIVE ON FOLLOWING PAGE)

NOTE: Chart not to scale.

ARRIVAL ROUTE DESCRIPTION

BONHAM TRANSITION (BYP.FINGR9): From over BYP VORTAC on BYP R-191 to FINGR. Thence

FORT SMITH TRANSITION (FSM.FINGR9): From over FSM VORTAC on FSM R-215 to MAMEE, then on BYP R-035 to BYP VORTAC, then on BYP R-191 to FINGR. Thence

LITTLE ROCK TRANSITION (LIT.FINGR9): From over LIT VORTAC on LIT R-247 to MEEOW, then on LIT R-247 and BYP R-064 to GLOVE, then on BYP R-064 to HAKIN, then on CVE R-046 to FINGR. Thence

PARIS TRANSITION (PRX.FINGR9): From over PRX VOR/DME on PRX R-263 to MONTE, then on CVE R-046 to FINGR. Thence

RIGYA TRANSITION (RIGYA.FINGR9): From over RIGYA on BYP R-010 to BYP VORTAC, then on BYP R-191 to FINGR. Thence

TEXARKANA TRANSITION (TXK.FINGR9): From over TXK VORTAC on TXK R-286 to GLOVE, then on BYP R-064 to HAKIN, then on CVE R-046 to FINGR. Thence

TULSA TRANSITION (TUL.FINGR9): From over TUL VORTAC on TUL R-157 to MAMEE, then on BYP R-035 to BYP VORTAC, then on BYP R-191 to FINGR. Thence

WILL ROGERS TRANSITION (IRW.FINGR9): From over IRW VORTAC on IRW R-130 to RIGYA, then on BYP R-010 to BYP VORTAC, then on BYP R-191 to FINGR. Thence

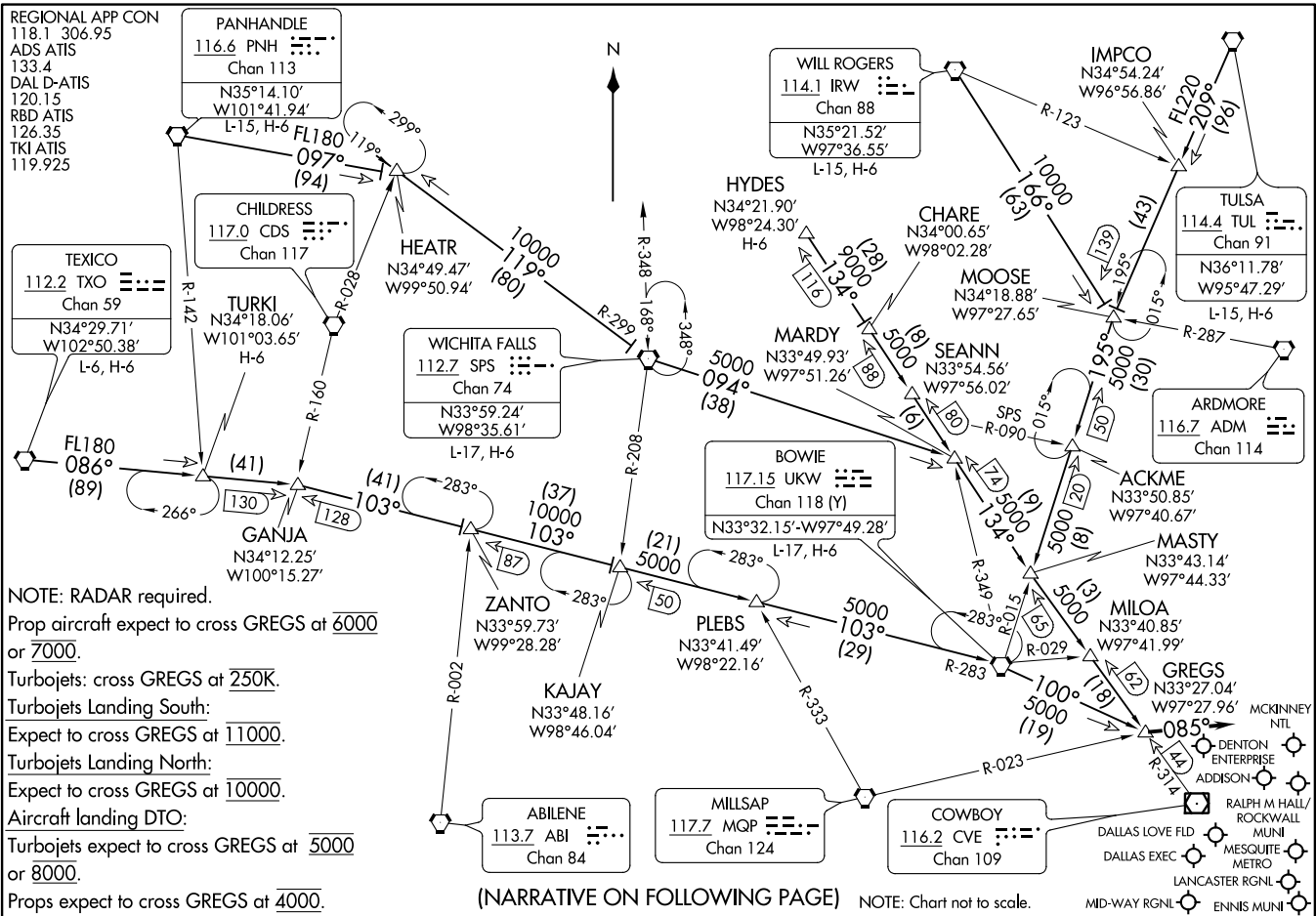
. . . . from FINGR, then on heading 230° or as assigned by ATC. Expect RADAR vectors to final approach course.

SC-2, 22 FEB 2024 to 21 MAR 2024

SC-2, 22 FEB 2024 to 21 MAR 2024

GREGS ONE ARRIVAL
(GREGS, GREGS 1) 14JUL22

(GREGS, GREGS 1) 22195
GREGS ONE ARRIVAL



NOTE: RADAR required.
 Prop aircraft expect to cross GREGS at 6000
 or 7000.
 Turbojets: cross GREGS at 250K.
 Turbojets Landing South:
 Expect to cross GREGS at 11000.
 Turbojets Landing North:
 Expect to cross GREGS at 10000.
 Aircraft landing DTO:
 Turbojets expect to cross GREGS at 5000
 or 8000.
 Props expect to cross GREGS at 4000.

(NARRATIVE ON FOLLOWING PAGE)

NOTE: Chart not to scale.

DALLAS-FORT WORTH, TEXAS

DALLAS-FORT WORTH, TEXAS
AL-106 (FAA)

ARRIVAL DESCRIPTION

BOWIE TRANSITION (UKW.GREGS1): From over UKW VORTAC on UKW R-100 to GREGS. Thence. . . .

HYDES TRANSITION (HYDES.GREGS1): From over HYDES on CVE R-314 to GREGS. Thence. . . .

PANHANDLE TRANSITION (PNH.GREGS1): From over PNH VORTAC on PNH R-097 to HEATR, then on SPS R-299 to SPS VORTAC, then on SPS R-094 to MARDY, then on CVE R-314 to GREGS. Thence. . . .

TEXICO TRANSITION (TXO.GREGS1): From over TXO VORTAC on TXO R-086 to GANJA, then on UKW R-283 to UKW VORTAC, then on UKW R-100 to GREGS. Thence. . . .

TULSA TRANSITION (TUL.GREGS1): From over TUL VORTAC on TUL R-209 to MOOSE, then on UKW R-015 to MASTY, then on CVE R-314 to GREGS. Thence. . . .

TURKI TRANSITION (TURKI.GREGS1): From over TURKI on TXO R-086 to GANJA, then on UKW R-283 to UKW VORTAC, then on UKW R-100 to GREGS. Thence. . . .

WICHITA FALLS TRANSITION (SPS.GREGS1): From over SPS VORTAC on SPS R-094 to MARDY, then on CVE R-314 to GREGS. Thence. . . .

WILL ROGERS TRANSITION (IRW.GREGS1): From over IRW VORTAC on IRW R-166 to MOOSE, then on UKW R-015 to MASTY, then on CVE R-314 to GREGS. Thence. . . .

. . . .from over GREGS, depart GREGS heading 085°. Expect RADAR vectors to final approach course.

SC-2, 22 FEB 2024 to 21 MAR 2024

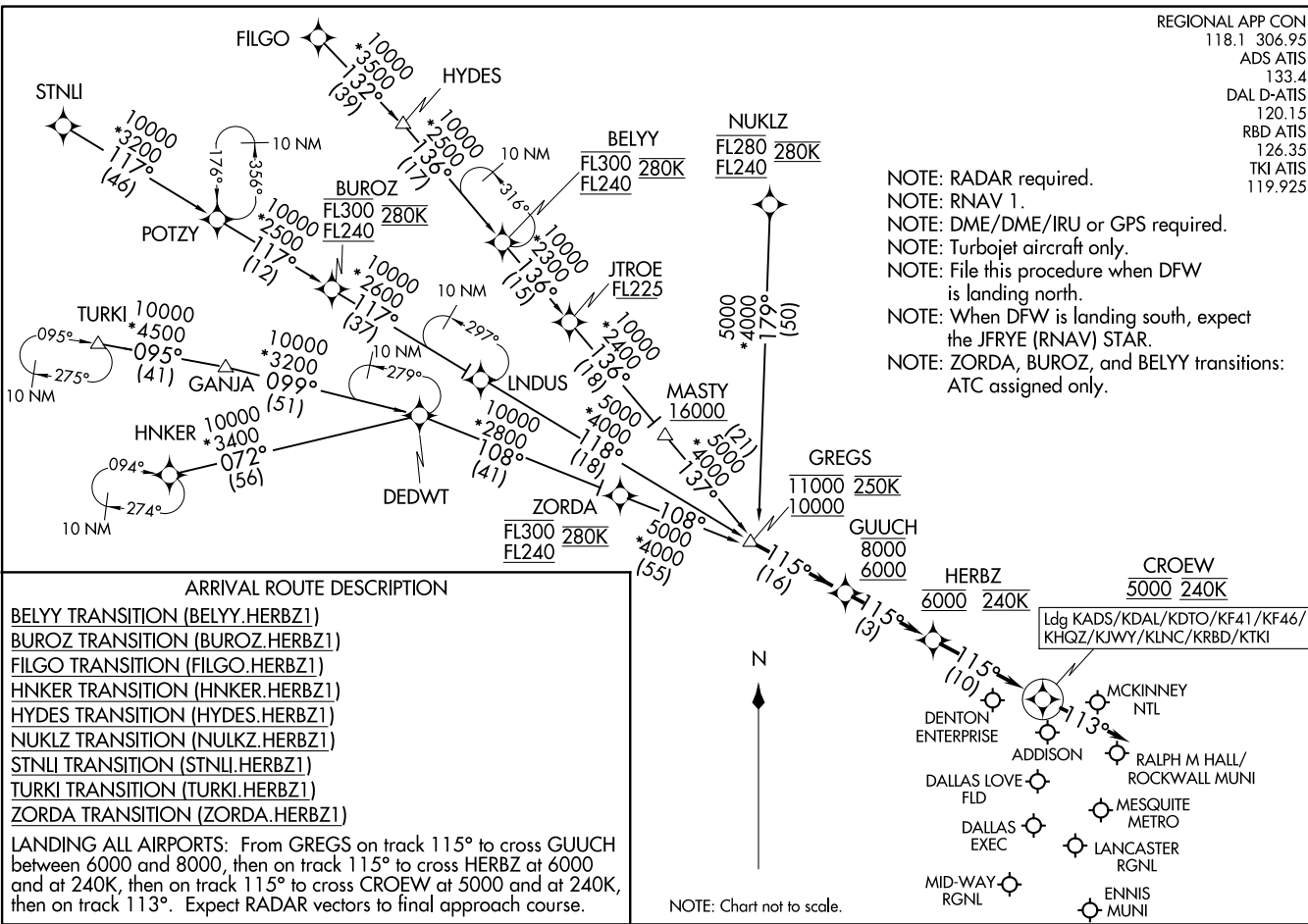
SC-2, 22 FEB 2024 to 21 MAR 2024

HERBZ ONE ARRIVAL (RNAV)
(GREGS.HERBZ1) 17JUN21

REGIONAL APP CON
118.1 306.95
ADS ATIS
133.4
DAL D-ATIS
120.15
RBD ATIS
126.35
TKI ATIS
119.925

(GREGS.HERBZ1) 21224
HERBZ ONE ARRIVAL (RNAV)

A1-106 (FAA)



NOTE: RADAR required.
 NOTE: RNAV 1.
 NOTE: DME/DME/IRU or GPS required.
 NOTE: Turbojet aircraft only.
 NOTE: File this procedure when DFW is landing north.
 NOTE: When DFW is landing south, expect the JFRYE (RNAV) STAR.
 NOTE: ZORDA, BUROZ, and BELYY transitions: ATC assigned only.

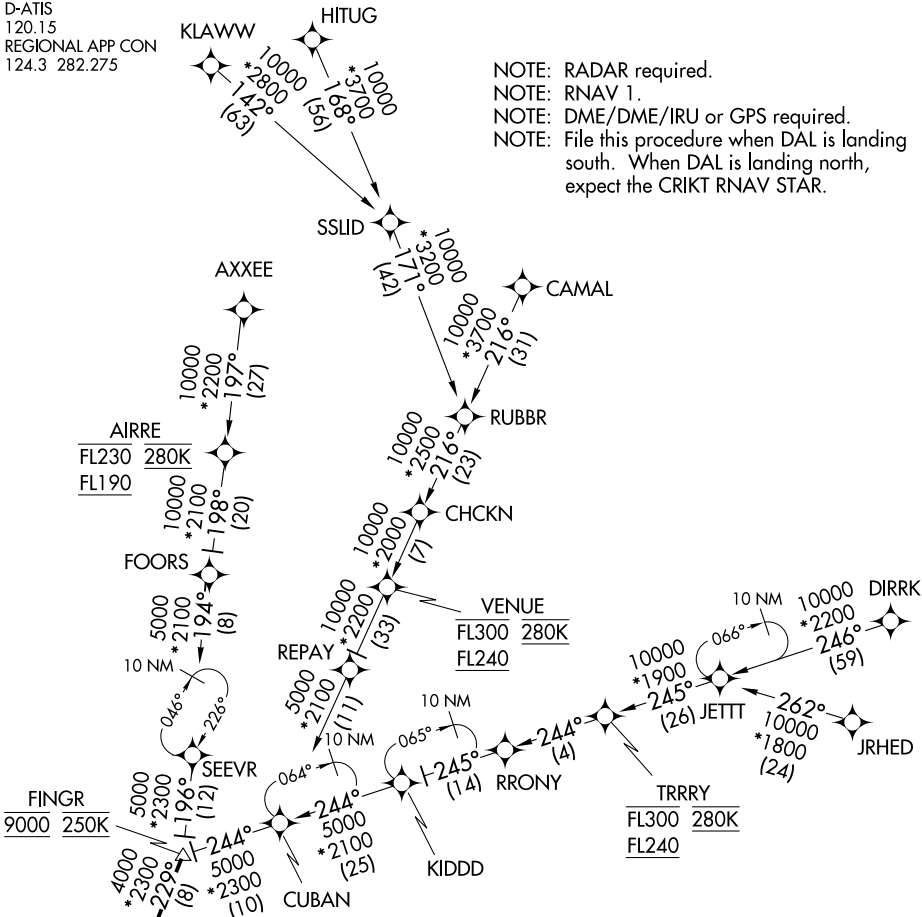
DALLAS, TEXAS

DALLAS, TEXAS

HIBIL THREE ARRIVAL (RNAV)

D-ATIS
120.15
REGIONAL APP CON
124.3 282.275

NOTE: RADAR required.
NOTE: RNAV 1.
NOTE: DME/DME/IRU or GPS required.
NOTE: File this procedure when DAL is landing south. When DAL is landing north, expect the CRIKT RNAV STAR.



NOTE: JRHED, RUBBR, and JETT TRANSITIONS: ATC assigned only.
 NOTE: AXXEE and RRRNY TRANSITIONS: For aircraft filing FL230 and below.
 NOTE: AIRRE TRANSITION: For traffic at or below FL190 only.
 NOTE: Aircraft departing the Oklahoma City terminal area file and expect the AIRRE enroute transition.

ARRIVAL ROUTE DESCRIPTION

<u>AIRRE TRANSITION (AIRRE.HIBIL3)</u>	<u>JETT TRANSITION (JETT.HIBIL3)</u>
<u>AXXEE TRANSITION (AXXEE.HIBIL3)</u>	<u>JRHED TRANSITION (JRHED.HIBIL3)</u>
<u>CAMAL TRANSITION (CAMAL.HIBIL3)</u>	<u>KLAWW TRANSITION (KLAWW.HIBIL3)</u>
<u>DIRRK TRANSITION (DIRRK.HIBIL3)</u>	<u>RRRNY TRANSITION (RRRNY.HIBIL3)</u>
<u>HITUG TRANSITION (HITUG.HIBIL3)</u>	<u>RUBBR TRANSITION (RUBBR.HIBIL3)</u>

From FINGR on track 229° to SLANT, then on track 232° to HIBIL, then on track 232°. Expect RADAR vectors to final approach course.

NOTE: Chart not to scale.

SC-2, 22 FEB 2024 to 21 MAR 2024

SC-2, 22 FEB 2024 to 21 MAR 2024

HIBIL THREE ARRIVAL (RNAV)

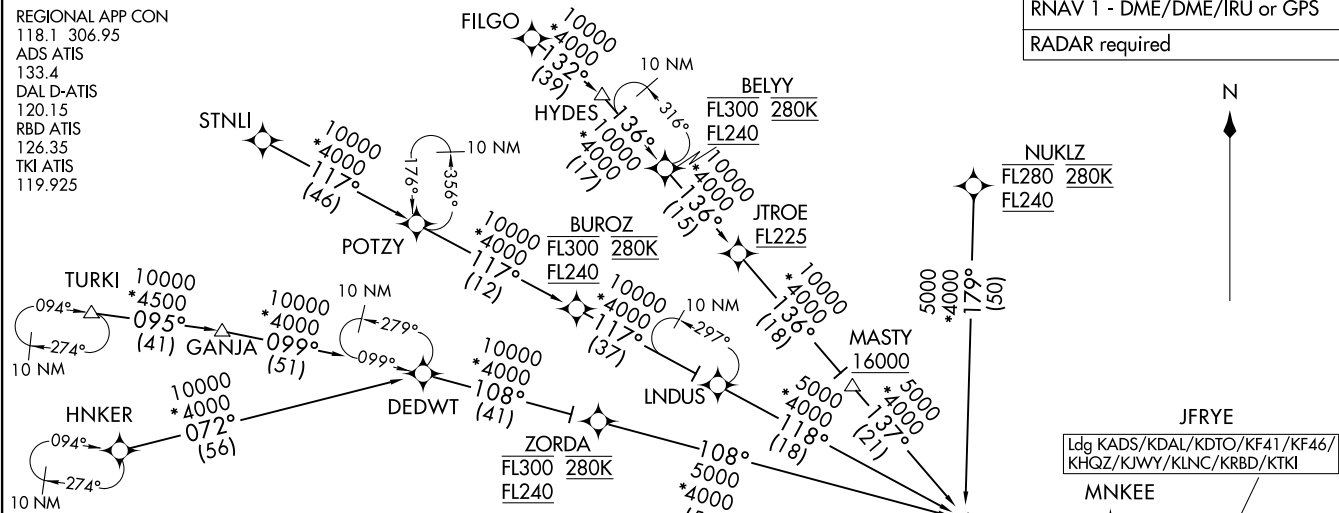
JFRYE FIVE ARRIVAL (RNAV)
 (GREGS.JFRYE5) 14JUL22

(GREGS.JFRYE5) 22195
 JFRYE FIVE ARRIVAL (RNAV)

AL-106 (FAA)

DALLAS, TEXAS

RNAV 1 - DME/DME/IRU or GPS
 RADAR required



ARRIVAL ROUTE DESCRIPTION

- BELY TRANSITION (BELY.JFRYE5)
- BUROZ TRANSITION (BUROZ.JFRYE5)
- FILGO TRANSITION (FILGO.JFRYE5)
- HNKER TRANSITION (HNKER.JFRYE5)
- HYDES TRANSITION (HYDES.JFRYE5)
- NUKLZ TRANSITION (NUKLZ.JFRYE5)
- STNLI TRANSITION (STNLI.JFRYE5)
- TURKI TRANSITION (TURKI.JFRYE5)
- ZORDA TRANSITION (ZORDA.JFRYE5)

LANDING ALL AIRPORTS: From GREGS on track 090° to MNKEE, then on track 116° to JFRYE, then on track 143°. Expect RADAR vectors to final approach course.

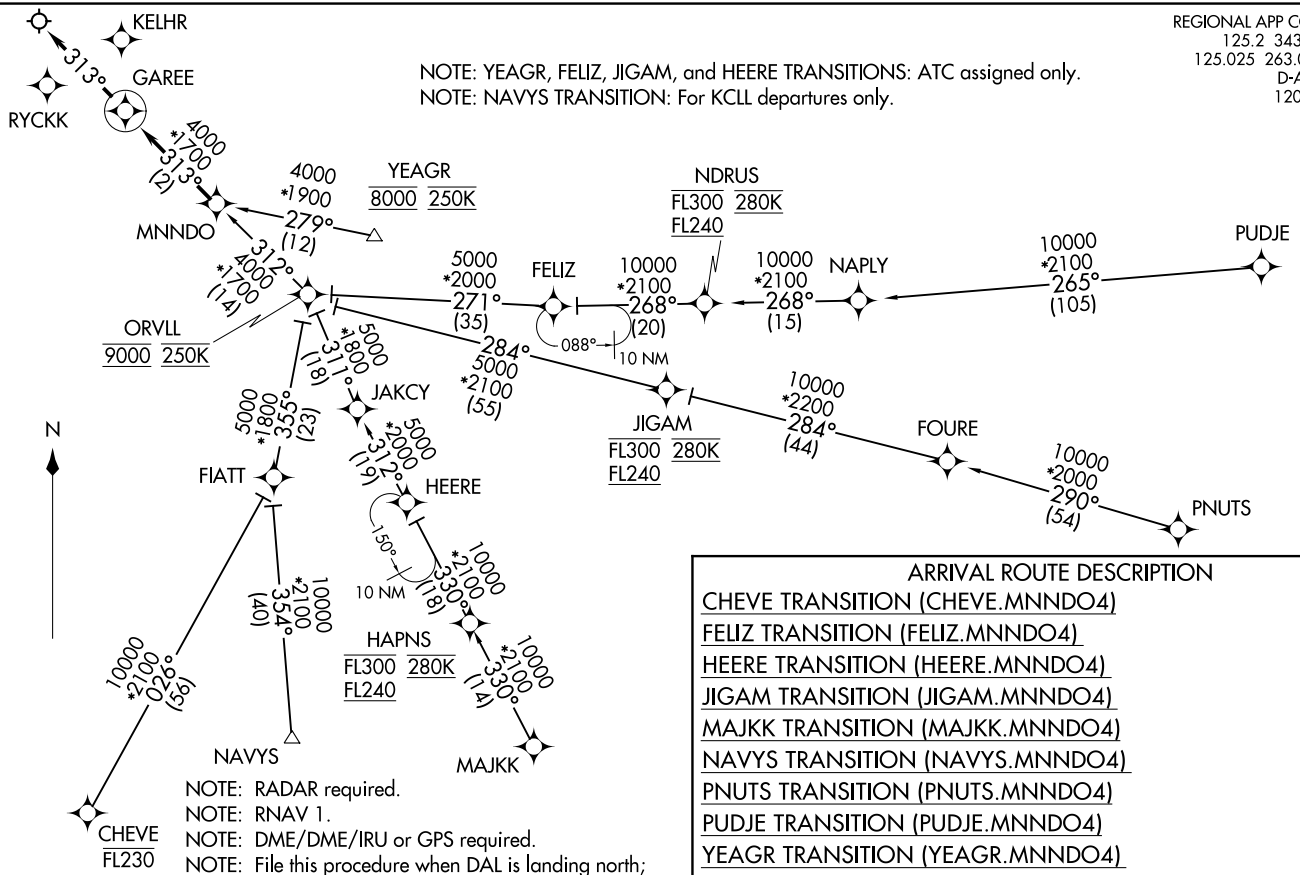
- NOTE: Jet aircraft only.
- NOTE: When DFW is landing north, expect the HERBZ RNAV STAR.
- NOTE: ZORDA, BUROZ, and BELY Enroute Transitions - ATC assigned only.

NOTE: Chart not to scale.

DALLAS, TEXAS

REGIONAL APP CON
125.2 343.65
125.025 263.025
D-ATIS
120.15

NOTE: YEAGR, FELIZ, JIGAM, and HEERE TRANSITIONS: ATC assigned only.
NOTE: NAVYS TRANSITION: For KCLL departures only.



NOTE: RADAR required.
NOTE: RNAV 1.
NOTE: DME/DME/IRU or GPS required.
NOTE: File this procedure when DAL is landing north;
when DAL is landing south, expect the REDDN RNAV STAR.

NOTE: Chart not to scale.

ARRIVAL ROUTE DESCRIPTION

CHEVE TRANSITION (CHEVE.MNND04)
FELIZ TRANSITION (FELIZ.MNND04)
HEERE TRANSITION (HEERE.MNND04)
JIGAM TRANSITION (JIGAM.MNND04)
MAJKK TRANSITION (MAJKK.MNND04)
NAVYS TRANSITION (NAVYS.MNND04)
PNUTS TRANSITION (PNUTS.MNND04)
PUDJE TRANSITION (PUDJE.MNND04)
YEAGR TRANSITION (YEAGR.MNND04)

From MNND0 on track 313° to GAREE, then on track 313°. Expect RADAR vectors to final approach course.

MNND0 FOUR ARRIVAL (RNAV)
(MNND0.MNND04) 26MAY16
DALLAS, TEXAS
DALLAS LOVE FLD (DAL)

(MNND0.MNND04) 21112
AL-106 (FAA)
DALLAS LOVE FLD (DAL)
DALLAS, TEXAS

REDDN FOUR ARRIVAL (RNAV)
(REDDN.REDDN4) 26MAY16

REDDN FOUR ARRIVAL (RNAV)
(REDDN.REDDN4) 21112

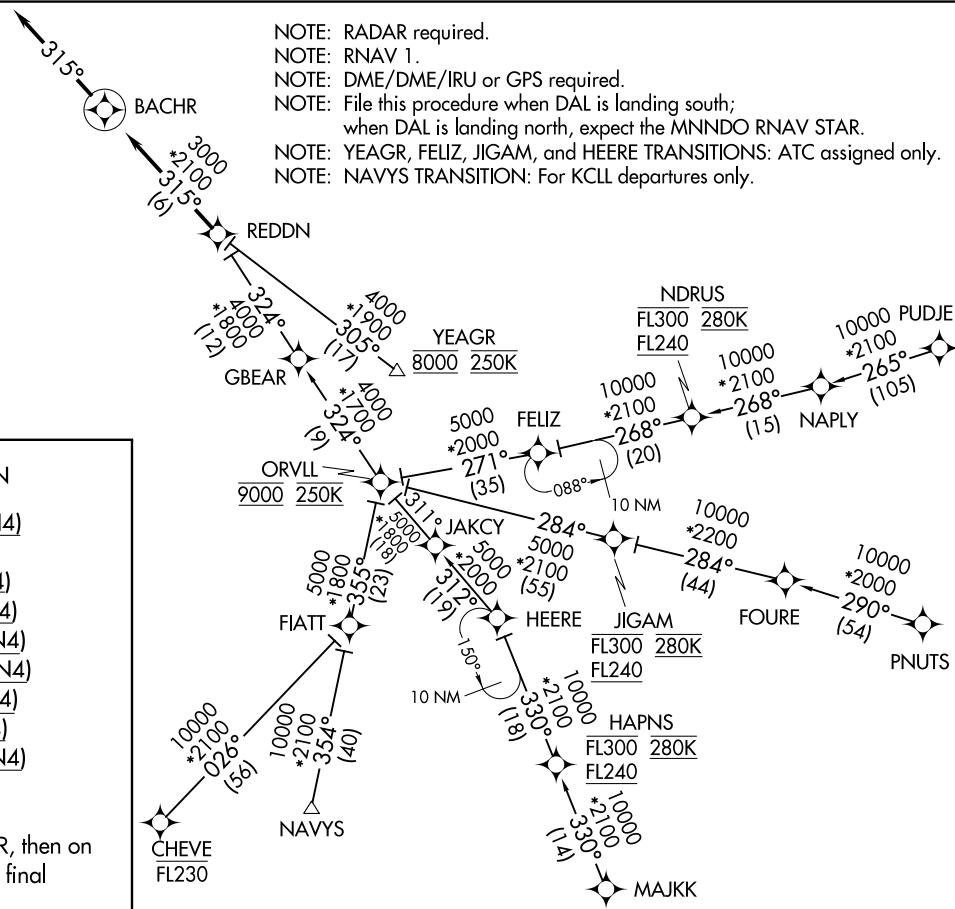
AL-106 (FAA)

DALLAS LOVE FLD (DAL)
DALLAS, TEXAS

REGIONAL APP CON
125.27 308.4
125.025 263.025
D-ATIS
120.15



NOTE: RADAR required.
NOTE: RNAV 1.
NOTE: DME/DME/IRU or GPS required.
NOTE: File this procedure when DAL is landing south;
when DAL is landing north, expect the MNND0 RNAV STAR.
NOTE: YEAGR, FELIZ, JIGAM, and HEERE TRANSITIONS: ATC assigned only.
NOTE: NAVYS TRANSITION: For KCLL departures only.



ARRIVAL ROUTE DESCRIPTION

- CHEVE TRANSITION (CHEVE.REDDN4)
- FELIZ TRANSITION (FELIZ.REDDN4)
- HEERE TRANSITION (HEERE.REDDN4)
- JIGAM TRANSITION (JIGAM.REDDN4)
- MAJJK TRANSITION (MAJJK.REDDN4)
- NAVYS TRANSITION (NAVYS.REDDN4)
- PNUTS TRANSITION (PNUTS.REDDN4)
- PUDJE TRANSITION (PUDJE.REDDN4)
- YEAGR TRANSITION (YEAGR.REDDN4)

From REDDN on track 315° to BACHR, then on track 315°. Expect RADAR vectors to final approach course.

DALLAS, TEXAS
DALLAS LOVE FLD (DAL)

SWWAY FOUR ARRIVAL (RNAV)
 (KNEAD.SWWAY4) 26MAY16

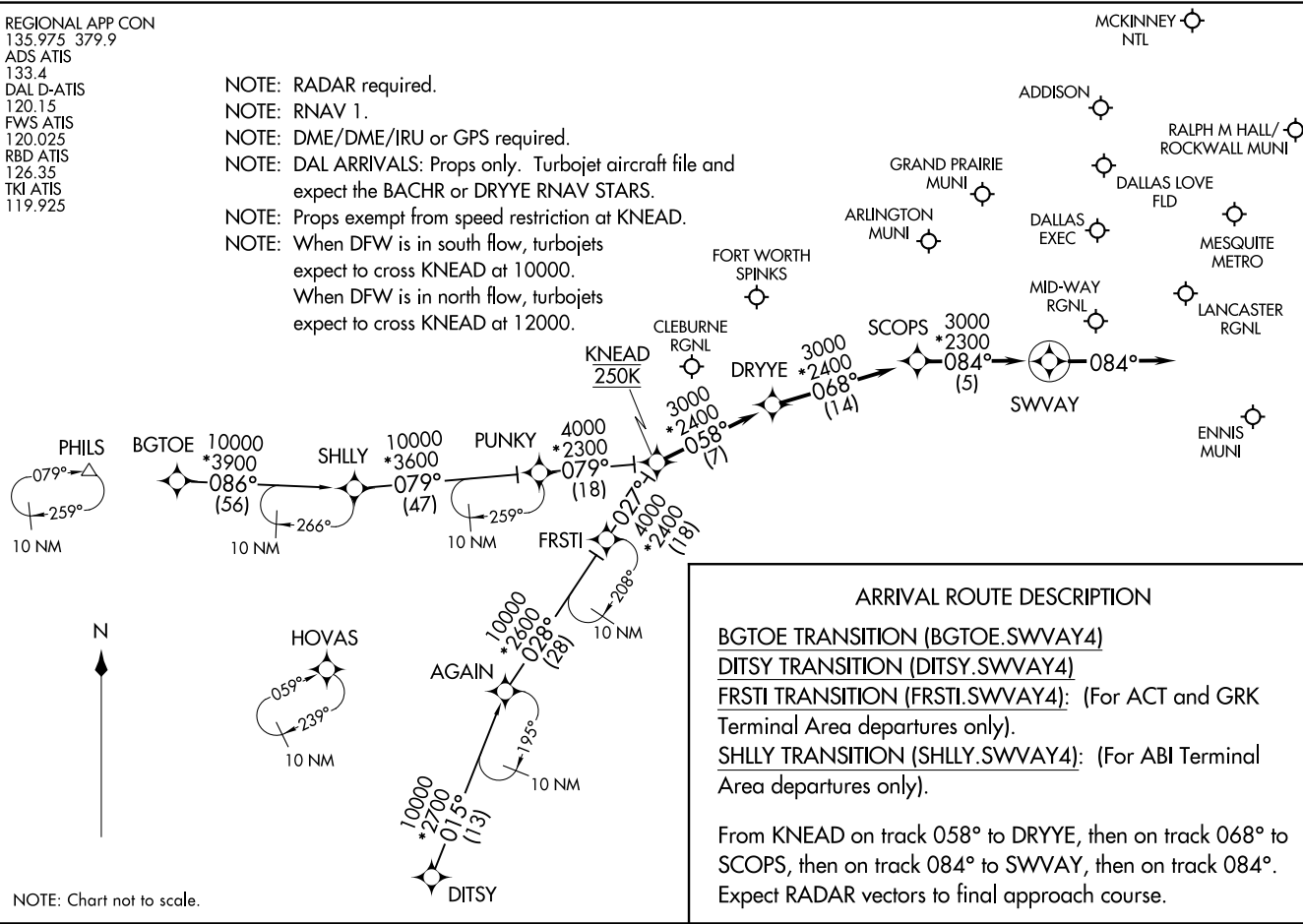
(KNEAD.SWWAY4) 23222
 SWWAY FOUR ARRIVAL (RNAV)

AL-768 (FAA)

DALLAS, TEXAS

REGIONAL APP CON
 135.975 379.9
 ADS ATIS
 133.4
 DAL D-ATIS
 120.15
 FWS ATIS
 120.025
 RBD ATIS
 126.35
 TKI ATIS
 119.925

- NOTE: RADAR required.
- NOTE: RNAV 1.
- NOTE: DME/DME/IRU or GPS required.
- NOTE: DAL ARRIVALS: Props only. Turbojet aircraft file and expect the BACHR or DRYYE RNAV STARS.
- NOTE: Props exempt from speed restriction at KNEAD.
- NOTE: When DFW is in south flow, turbojets expect to cross KNEAD at 10000.
- NOTE: When DFW is in north flow, turbojets expect to cross KNEAD at 12000.

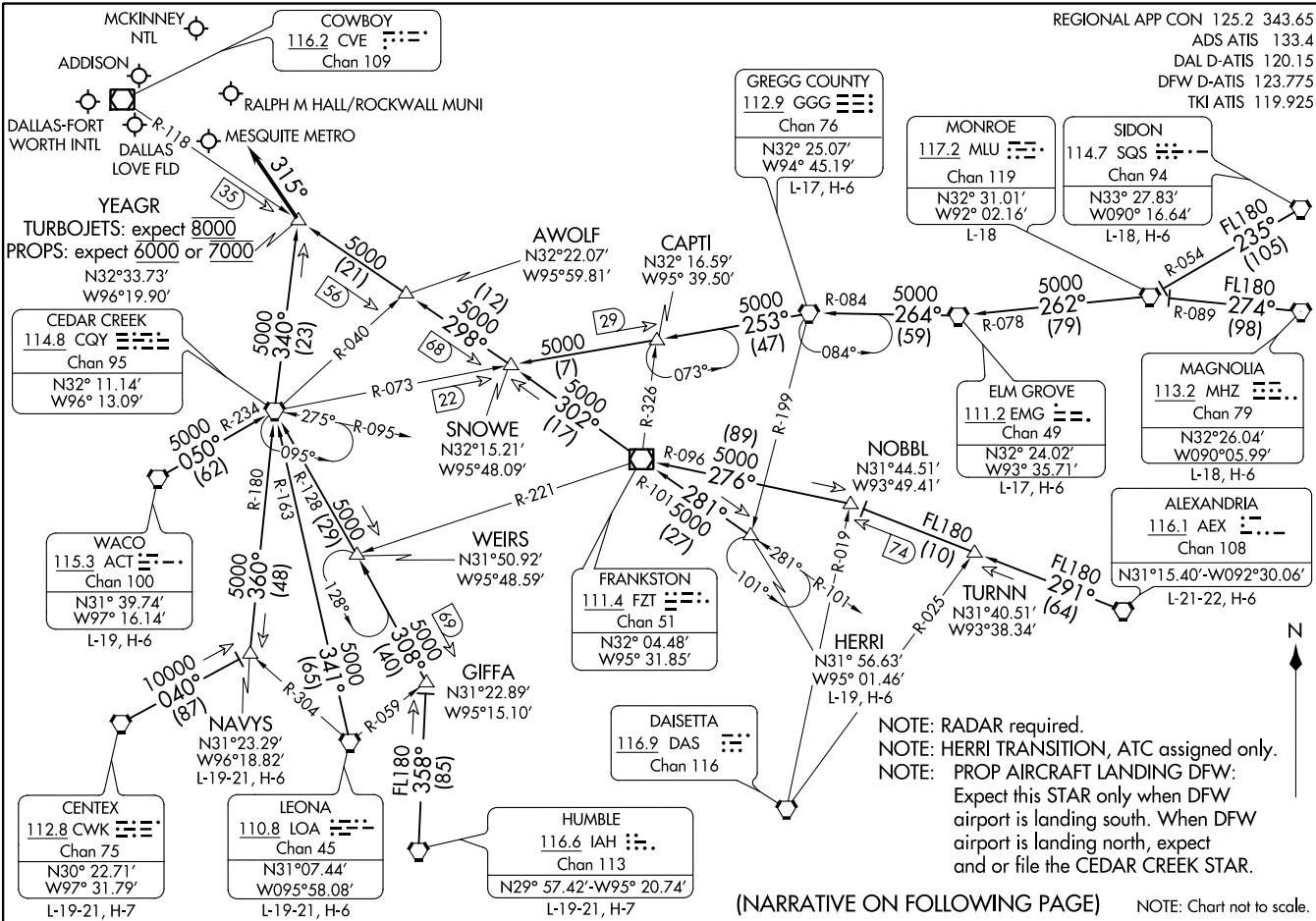


DALLAS, TEXAS

YEAGR: YEAGR4) 21MAY20

YEAGR FOUR ARRIVAL

DALLAS-FORT WORTH, TEXAS



YEAGR FOUR ARRIVAL

DALLAS-FORT WORTH, TEXAS

(YEAGR: YEAGR4) 23054

AL-6039 (FAA)

(NARRATIVE ON FOLLOWING PAGE)

NOTE: Chart not to scale.

YEAGR FOUR ARRIVAL

DALLAS-FORT WORTH, TEXAS

ARRIVAL ROUTE DESCRIPTION

ALEXANDRIA TRANSITION (AEX.YEAGR4): From over AEX VORTAC on AEX R-291 to NOBBL, then on FZT R-096 to FZT VOR/DME, then on FZT R-302 to SNOWE, then on CVE R-118 to YEAGR. Thence. . . .

CENTEX TRANSITION (CWK.YEAGR4): From over CWK VORTAC on CWK R-040 to NAVYS, then on CQY R-180 to CQY VORTAC, then on CQY R-340 to YEAGR. Thence. . . .

ELM GROVE TRANSITION (EMG.YEAGR4): From over EMG VORTAC on EMG R-264 and GGG R-084 to GGG VORTAC, then on GGG R-253 and CQY R-073 to CAPTI, then on CQY R-073 to SNOWE, then on CVE R-118 to YEAGR. Thence. . . .

GREGG COUNTY TRANSITION (GGG.YEAGR4): From over GGG VORTAC on GGG R-253 and CQY R-073 to CAPTI, then on CQY R-073 to SNOWE, then on CVE R-118 to YEAGR. Thence. . . .

GIFFA TRANSITION (GIFFA.YEAGR4): From over GIFFA on CQY R-128 to CQY VORTAC, then on CQY R-340 to YEAGR. Thence. . . .

HERRI TRANSITION (HERRI.YEAGR4): From over HERRI on FZT R-101 to FZT VOR/DME, then on FZT R-302 to SNOWE, then on CVE R-118 to YEAGR. Thence. . . .

HUMBLE TRANSITION (IAH.YEAGR4): From over IAH VORTAC on IAH R-358 to GIFFA, then on CQY R-128 to CQY VORTAC, then on CQY R-340 to YEAGR. Thence. . . .

LEONA TRANSITION (LOA.YEAGR4): From over LOA VORTAC on LOA R-341 and CQY R-163 to CQY VORTAC, then on CQY R-340 to YEAGR. Thence. . . .

MAGNOLIA TRANSITION (MHZ.YEAGR4): From over MHZ VORTAC on MHZ R-274 and MLU R-089 to MLU VORTAC, then on MLU R-262 and EMG R-078 to EMG VORTAC, then on EMG R-264 and GGG R-084 to GGG VORTAC, then on GGG R-253 and CQY R-073 to CAPTI, then on CQY R-073 to SNOWE, then on CVE R-118 to YEAGR. Thence. . . .

MONROE TRANSITION (MLU.YEAGR4): From over MLU VORTAC on MLU R-262 and EMG R-078 to EMG VORTAC, then on EMG R-264 and GGG R-084 to GGG VORTAC, then on GGG R-253 and CQY R-073 to CAPTI, then on CQY R-073 to SNOWE, then on CVE R-118 to YEAGR. Thence. . . .

NAVYS TRANSITION (NAVYS.YEAGR4): From over NAVYS on CQY R-180 to CQY VORTAC, then on CQY R-340 to YEAGR. Thence. . . .

SIDON TRANSITION (SQS.YEAGR4): From over SQS VORTAC on SQS R-235 and MLU R-054 to MLU VORTAC, then on MLU R-262 and EMG R-078 to EMG VORTAC, then on EMG R-264 and GGG R-084 to GGG VORTAC, then on GGG R-253 and CQY R-073 to CAPTI, then on CQY R-073 to SNOWE, then on CVE R-118 to YEAGR. Thence. . . .

WACO TRANSITION (ACT.YEAGR4): From over ACT VORTAC on ACT R-050 and CQY R-234 to CQY VORTAC, then on CQY R-340 to YEAGR. Thence. . . .

. . . from over YEAGR, depart heading 315° or as assigned by ATC.
Expect RADAR vectors to final.

SC-2, 22 FEB 2024 to 21 MAR 2024

SC-2, 22 FEB 2024 to 21 MAR 2024

YEAGR FOUR ARRIVAL

DALLAS-FORT WORTH, TEXAS