

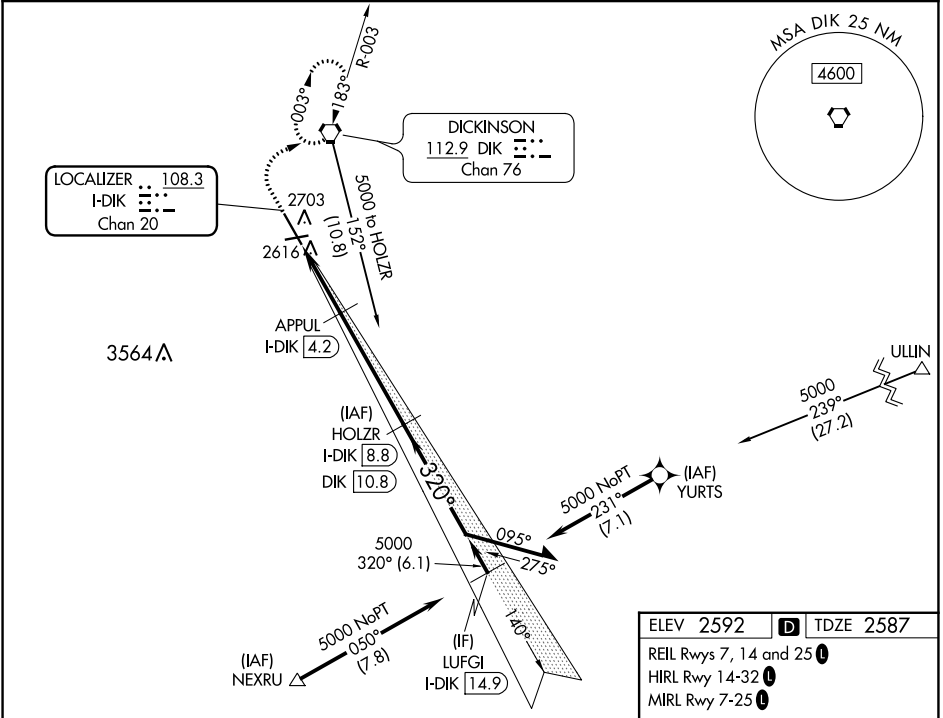
LOC/DME I-DIK	APP CRS	Rwy Idg	7301
108.3	320°	TDZE	2587
Chan 20		Apt Elev	2592

ILS or LOC RWY 32

DICKINSON/THEODORE ROOSEVELT RGNL (DIK)

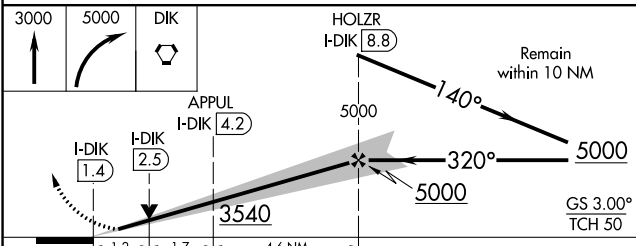
DME required.	MALSR	MISSED APPROACH: Climb to 3000, then climbing right turn to 5000 direct DIK VORTAC and hold, continue climb-in-hold to 5000.
RNP APCH - GPS. From NEXRU or YURTS.		
Use I-DIK DME when on the localizer course. For inop ALS, increase S-LOC 32 Cat C/D visibility to 1/2 SM.		

ASOS 118.375	MINNEAPOLIS CENTER 124.25 236.825	UNICOM 123.0 (CTAF)
------------------------	---	-------------------------------



NC-1, 22 FEB 2024 to 21 MAR 2024

NC-1, 22 FEB 2024 to 21 MAR 2024




CATEGORY	A	B	C	D
S-ILS 32		2787-1/2	200 (200-1/2)	
S-LOC 32	3000-1/2	413 (500-1/2)	3000-3/4	413 (500-3/4)
CIRCLING	3060-1	468 (500-1)	3120-1 1/2	3200-2
			528 (600-1 1/2)	608 (700-2)

WAAS CH 45944 W14A	APP CRS 140°	Rwy Idg 7301 TDZE 2585 Apt Elev 2592
--	------------------------	---

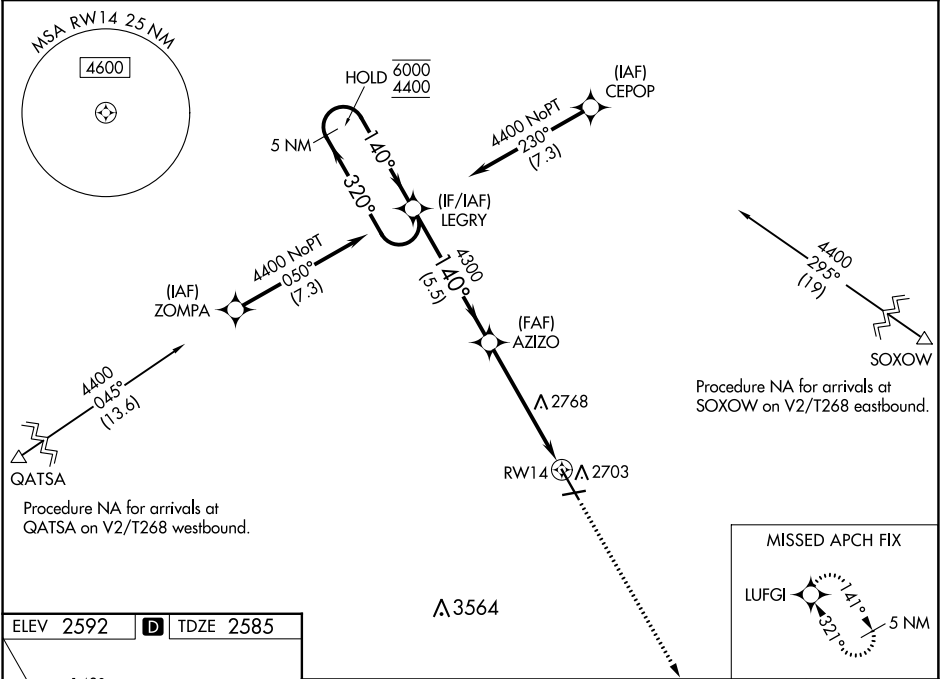
RNAV (GPS) RWY 14

DICKINSON/THEODORE ROOSEVELT RGNL (DIK)

RNP APCH - GPS.
 For uncompensated Baro-VNAV systems, LNAV/VNAV NA below -24°C or above 54°C.

MISSED APPROACH: Climb to 5000 direct LUGFI and hold.

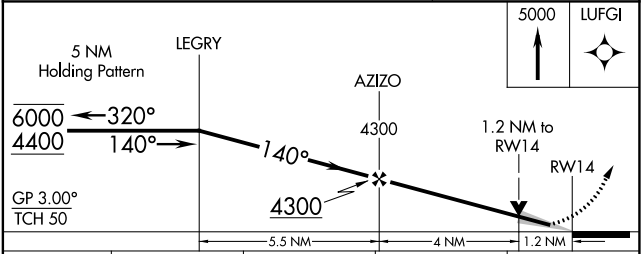
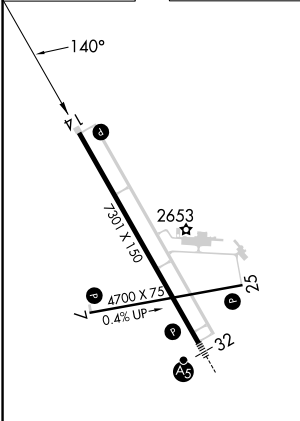
ASOS 118.375	MINNEAPOLIS CENTER 124.25 236.825	UNICOM 123.0 (CTAF) 0
------------------------	---	---------------------------------






NC-1, 22 FEB 2024 to 21 MAR 2024

NC-1, 22 FEB 2024 to 21 MAR 2024

ELEV 2592	D	TDZE 2585
-----------	----------	-----------



CATEGORY	A	B	C	D
LPV DA		2785- ³ / ₄	200 (200- ³ / ₄)	
LNAV/VNAV DA		2835- ³ / ₄	250 (300- ³ / ₄)	
LNAV MDA	3020-1	435 (500-1)	3020-1 ¹ / ₄	435 (500-1 ¹ / ₄)
CIRCLING	3060-1	468 (500-1)	3120-1 ¹ / ₂ 528 (600-1 ¹ / ₂)	3200-2 608 (700-2)

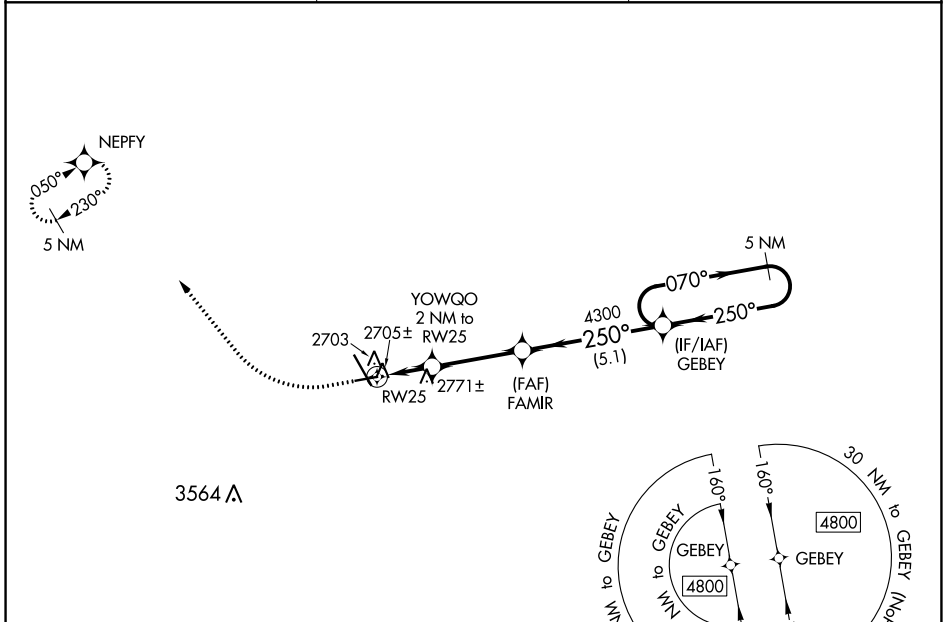
HIRL Rwy 14-32 
 MIRL Rwy 7-25 
 REL Rwy 7, 14 and 25 

WAAS CH 82534 W25A	APP CRS 250°	Rwy Idg TDZE Apt Elev	4700 2592 2592
--	------------------------	-----------------------------	---

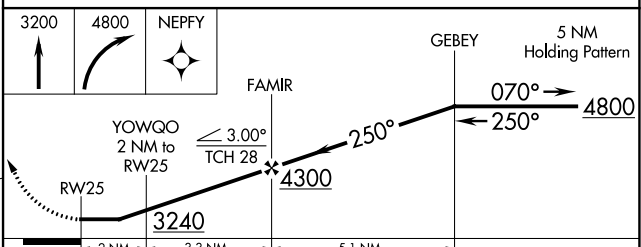
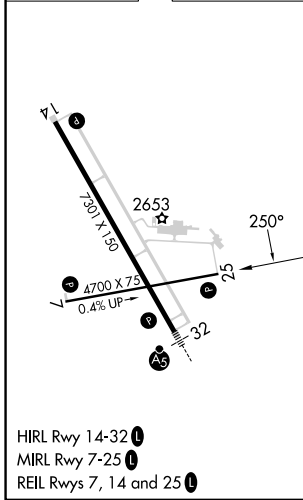
RNAV (GPS) RWY 25

DICKINSON/THEODORE ROOSEVELT RGNL (DIK)

RNP APCH.		MISSED APPROACH: Climb to 3200 then climbing right turn to 4800 direct NEPFY and hold.
ASOS 118.375	MINNEAPOLIS CENTER 124.25 236.825	UNICOM 123.0 (CTAF) 0



ELEV	2592	D	TDZE	2592
------	------	----------	------	------



CATEGORY	A	B	C	D
LP MDA	2980-1	388 (400-1)	2980-1½	388 (400-1½)
LNAV MDA	3060-1	468 (500-1)	3060-1¾	468 (500-1¾)
C CIRCLING	3080-1 488 (500-1)	3100-1 508 (600-1)	3120-1½ 528 (600-1½)	3220-2 628 (700-2)

NC-1, 22 FEB 2024 to 21 MAR 2024

NC-1, 22 FEB 2024 to 21 MAR 2024

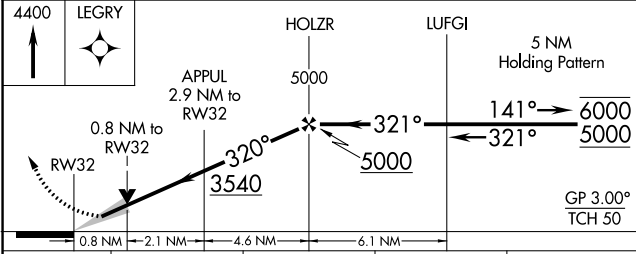
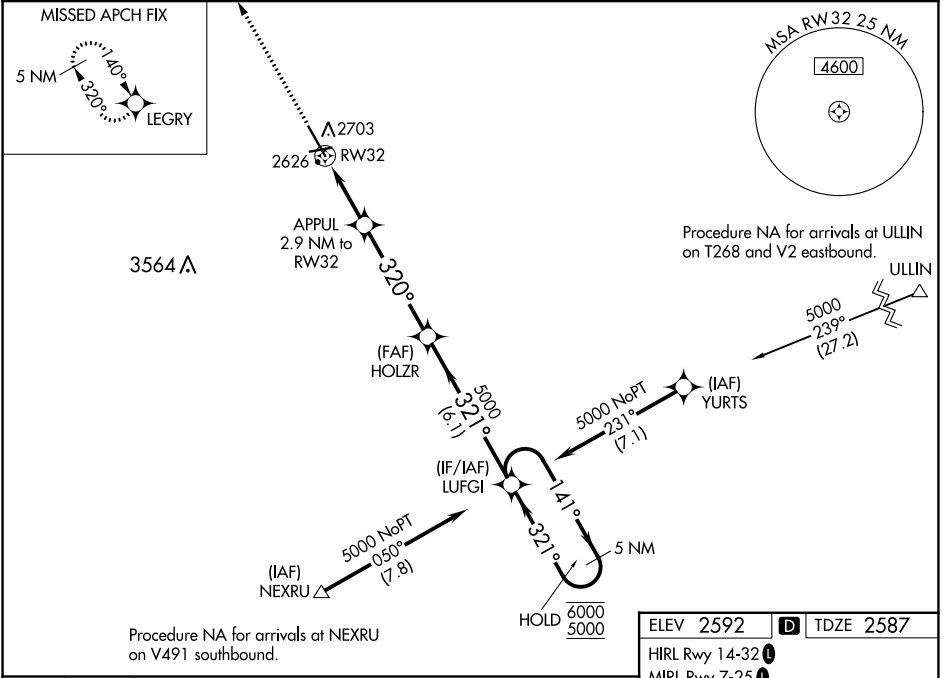
WAAS CH 50544 W32A	APP CRS 320°	Rwy Idg TDZE Apt Elev	7301 2587 2592
--	------------------------	-----------------------------	---

RNAV (GPS) RWY 32

DICKINSON/THEODORE ROOSEVELT RGNL (DIK)

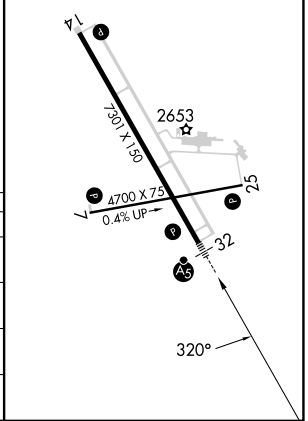
RNP APCH - GPS.	MALSR 	MISSED APPROACH: Climb to 4400 direct LEGRY and hold.
<p>⚠ For uncompensated Baro-VNAV systems, LNAV/VNAV NA below -24°C or above 54°C. For inop ALS, increase LNAV/VNAV all Cats visibility to 3/4 SM and LNAV Cat C/D visibility to 2/3 SM.</p>		

ASOS 118.375	MINNEAPOLIS CENTER 124.25 236.825	UNICOM 123.0 (CTAF)
------------------------	---	-------------------------------



ELEV 2592	D	TDZE 2587
-----------	----------	-----------

HIRL Rwy 14-32 **Ⓡ**
 MIRL Rwy 7-25 **Ⓡ**
 REIL Rws 7, 14 and 25 **Ⓡ**



CATEGORY	A	B	C	D
LPV DA		2787-1/2	200 (200-1/2)	
LNAV/VNAV DA		2837-1/2	250 (300-1/2)	
LNAV MDA		2880-1/2	293 (300-1/2)	
CIRCLING	3060-1	468 (500-1)	3120-1/2 528 (600-1/2)	3200-2 608 (700-2)

NC-1, 22 FEB 2024 to 21 MAR 2024

NC-1, 22 FEB 2024 to 21 MAR 2024

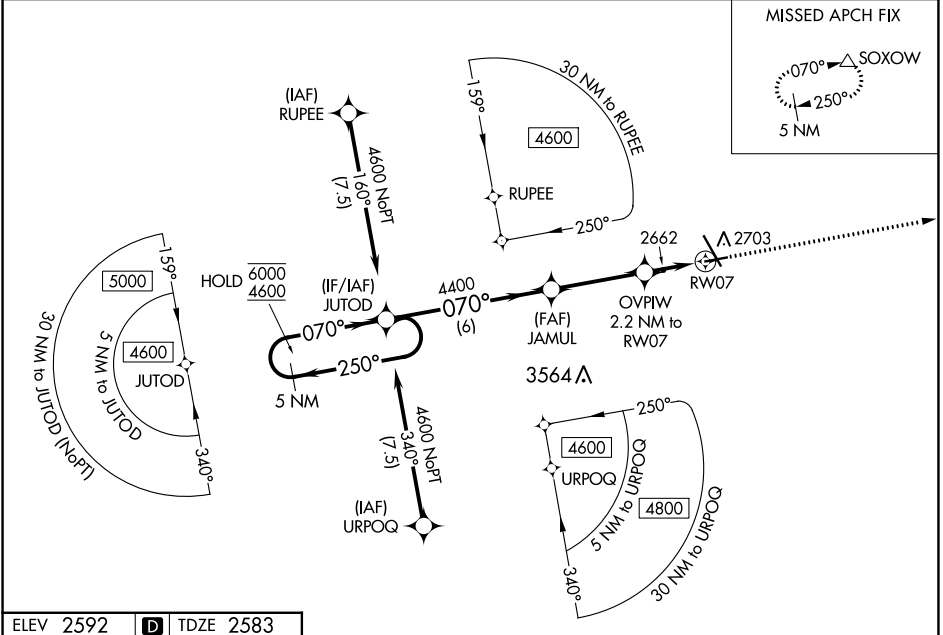
WAAS CH 90544 W07A	APP CRS 070°	Rwy ldg 4700 TDZE 2583 Apt Elev 2592
--	------------------------	---

RNAV (GPS) RWY 7

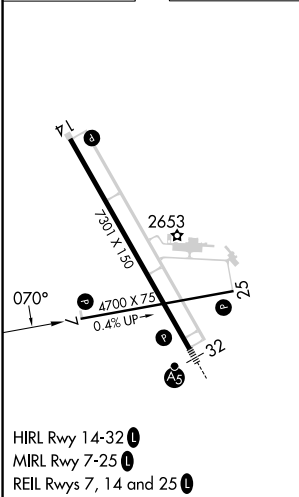
DICKINSON/THEODORE ROOSEVELT RGNL (DIK)

RNP APCH - GPS.	MISSED APPROACH: Climb to 4600 direct SOXOW and hold.
<p>▼ Rwy 7 helicopter visibility reduction below 3/4 SM NA.</p> <p>▲ For uncompensated Baro-VNAV systems, LNAV/VNAV NA below -26°C or above 54°C.</p>	

ASOS 118.375	MINNEAPOLIS CENTER 124.25 236.825	UNICOM 123.0 (CTAF) 0
------------------------	---	---------------------------------



ELEV 2592	D	TDZE 2583
------------------	----------	------------------



VGSI and RNAV glidepath not coincident (VGSI Angle 3.00/TCH 28).				4600	SOXOW
5 NM Holding Pattern 6000 ← 250° 4600 → 070°				↑	△
GP 3.00° TCH 45					
JUTOD (4600) → 070° → JAMUL (4400) → 070° → OVPW (3320) → 1 NM to RW07					
Distances: 6 NM (JUTOD to JAMUL), 3.4 NM (JAMUL to OVPW), 1.2 NM (OVPW to RW07), 1 NM (OVPW to RW07)					
CATEGORY	A	B	C	D	
LPV DA	2833-1		250 (300-1)		
LNAV/VNAV DA	2833-1		250 (300-1)		
LNAV MDA	2920-1		337 (400-1)		
CIRCLING	3060-1	468 (500-1)	3120-1½ 528 (600-1½)	3200-2 608 (700-2)	

RNAV (GPS) RWY 7

NC-1, 22 FEB 2024 to 21 MAR 2024

NC-1, 22 FEB 2024 to 21 MAR 2024

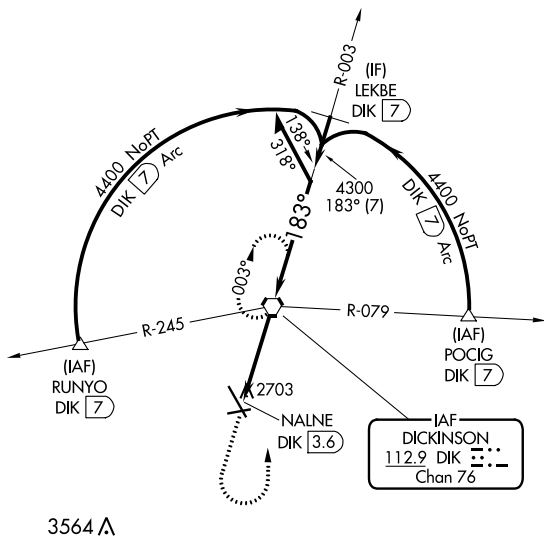
VORTAC DIK 112.9 Chan 76	APP CRS 183°	Rwy Idg TDZE Apt Elev 2592	N/A N/A
--	------------------------	--	--------------------------

VOR-A

DICKINSON/THEODORE ROOSEVELT RGNL (DIK)

<p>⚠ When local altimeter setting not received, use Bowman altimeter setting and increase all MDAs 280 feet, increase Circling Cat C visibility ¼ SM, Cat D visibility 1 SM.</p>	<p>MISSED APPROACH: Climb to 4600 then turn left direct DIK VORTAC and hold.</p>
---	--

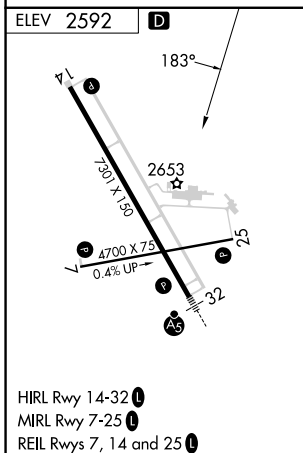
ASOS 118.375	MINNEAPOLIS CENTER 124.25 236.825	UNICOM 123.0 (CTAF) 0
------------------------	---	---------------------------------



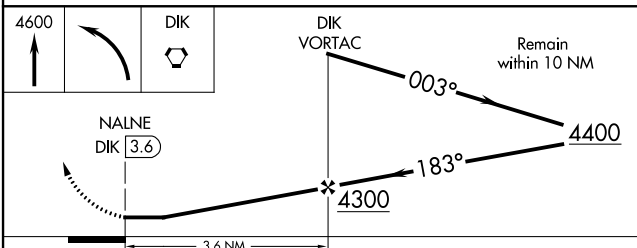
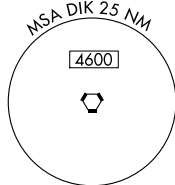
3564 **Δ**

NC-1, 22 FEB 2024 to 21 MAR 2024

NC-1, 22 FEB 2024 to 21 MAR 2024



HIRL Rwy 14-32 **0**
MIRL Rwy 7-25 **0**
REIL Rws 7, 14 and 25 **0**



FAF to MAP 3.6 NM					CATEGORY	A	B	C	D
Knots	60	90	120	150	180	3080-1	3100-1	3120-1½	3220-2
Min:Sec	3:36	2:24	1:48	1:26	1:12	488 (500-1)	508 (600-1)	528 (600-1½)	628 (700-2)

DICKINSON, NORTH DAKOTA
Amdt 6A 23APR20

DICKINSON/THEODORE ROOSEVELT RGNL (DIK)
46°48'N-102°48'W
VOR-A