

ALEXANDRIA THREE DEPARTURE  
(AEX3.AEX) 07OCT21

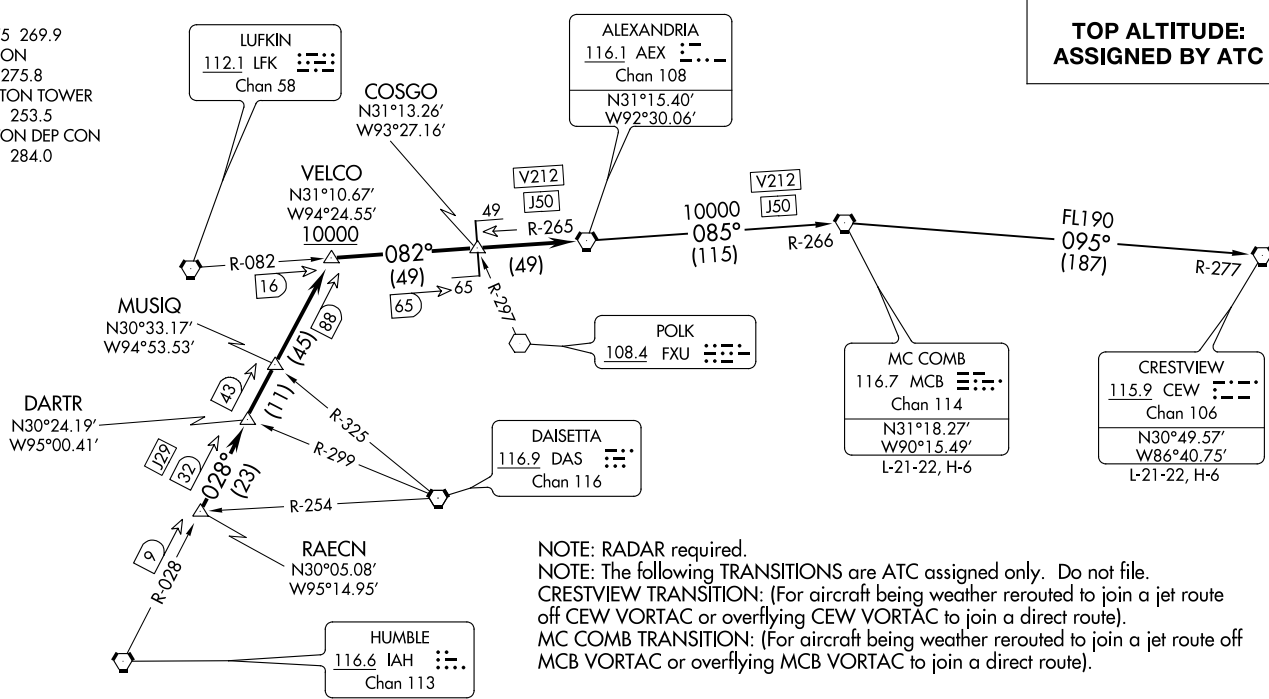
ALEXANDRIA THREE DEPARTURE  
(AEX3.AEX) 21280

AL-197 (FAA)

ELLINGTON (E/FD)  
HOUSTON, TEXAS

ATIS  
135.575 269.9  
GND CON  
121.6 275.8  
ELLINGTON TOWER  
126.05 253.5  
HOUSTON DEP CON  
134.45 284.0

**TOP ALTITUDE:  
ASSIGNED BY ATC**



NOTE: RADAR required.

NOTE: The following TRANSITIONS are ATC assigned only. Do not file.

CRESTVIEW TRANSITION: (For aircraft being weather rerouted to join a jet route off CEW VORTAC or overflying CEW VORTAC to join a direct route).

MC COMB TRANSITION: (For aircraft being weather rerouted to join a jet route off MCB VORTAC or overflying MCB VORTAC to join a direct route).

**TAKEOFF MINIMUMS**

Rwys 4, 17L/R, 35L/R: Standard.

Rwy 22: 200-1¼ or standard with minimum climb of 214' per NM to 300, or alternatively, with standard takeoff minimums and a normal 200' per NM climb gradient, takeoff must occur no later than 1400' prior to DER.

(NARRATIVE ON FOLLOWING PAGE)

NOTE: Chart not to scale.

HOUSTON, TEXAS  
ELLINGTON (E/FD)

# ALEXANDRIA THREE DEPARTURE



## DEPARTURE ROUTE DESCRIPTION

TAKEOFF ALL RUNWAYS: Climb on assigned heading for RADAR vectors to RAECN INT. Maintain ATC assigned altitude. Expect filed altitude 10 minutes after departure, thence. . . .

. . . .on IAH R-028 to VELCO INT, cross VELCO INT at or above 10000, then right turn on LFK R-082 and AEX R-265 to AEX VORTAC.

CRESTVIEW TRANSITION (AEX3.CEW): From over AEX VORTAC on AEX R-085 and MCB R-266 to MCB VORTAC, then on MCB R-095 and CEW R-277 to CEW VORTAC.

MC COMB TRANSITION (AEX3.MCB): From over AEX VORTAC on AEX R-085 and MCB R-266 to MCB VORTAC.

SC-5, 22 FEB 2024 to 21 MAR 2024

SC-5, 22 FEB 2024 to 21 MAR 2024

(BLTWY7.BLTWY) 21280

AL-197 (FAA)

ELLINGTON (EFD)

HOUSTON, TEXAS

# BLTWY SEVEN DEPARTURE (RNAV)

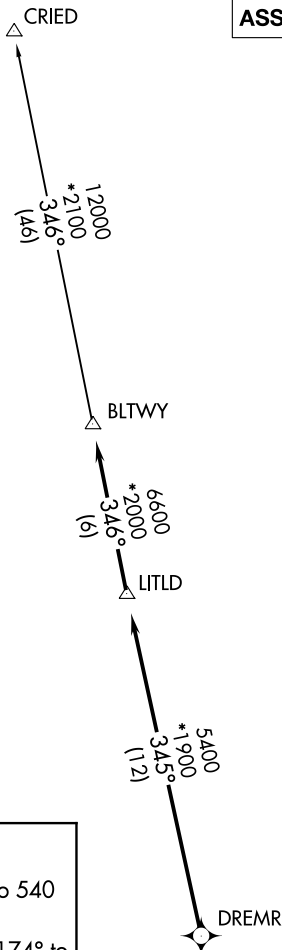
ATIS  
 135.575 269.9  
 GND CON  
 121.6 275.8  
 ELLINGTON TOWER  
 126.05 253.5  
 HOUSTON DEP CON  
 134.45 284.0

**TOP ALTITUDE:  
ASSIGNED BY ATC**

NOTE: RADAR required.  
 NOTE: DME/DME/IRU or GPS required.  
 NOTE: RNAV 1.

### TAKEOFF MINIMUMS

Rwys 4, 17L/R, 22, 35L/R:  
 Standard with minimum climb of 500' per NM to 540.



### DEPARTURE ROUTE DESCRIPTION

**TAKEOFF RUNWAY 4:** Climb on heading 039° to 540 for RADAR vectors to DREMR, thence . . . .

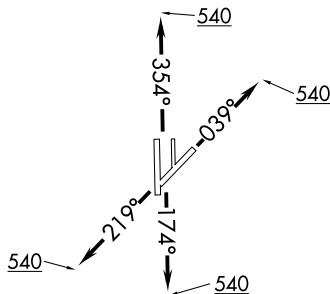
**TAKEOFF RUNWAYS 17L/R:** Climb on heading 174° to 540 for RADAR vectors to DREMR, thence . . . .

**TAKEOFF RUNWAY 22:** Climb on heading 219° to 540 for RADAR vectors to DREMR, thence . . . .

**TAKEOFF RUNWAYS 35L/R:** Climb on heading 354° to 540 for RADAR vectors to DREMR, thence . . . .

...on track 345° to LITLD, then on track 346° to BLTWY, then on (transition). Maintain ATC assigned altitude. Expect filed altitude 10 minutes after departure.

CRIED TRANSITION (BLTWY7.CRIED)



NOTE: Chart not to scale.

# BLTWY SEVEN DEPARTURE (RNAV)

(BLTWY7.BLTWY) 07OCT21

HOUSTON, TEXAS  
 ELLINGTON (EFD)

SC-5, 22 FEB 2024 to 21 MAR 2024

SC-5, 22 FEB 2024 to 21 MAR 2024

BORRN SIX DEPARTURE (RNAV)  
(BORRN6.BORRN) 30NOV23

HOUSTON, TEXAS  
ELLINGTON (EFD)

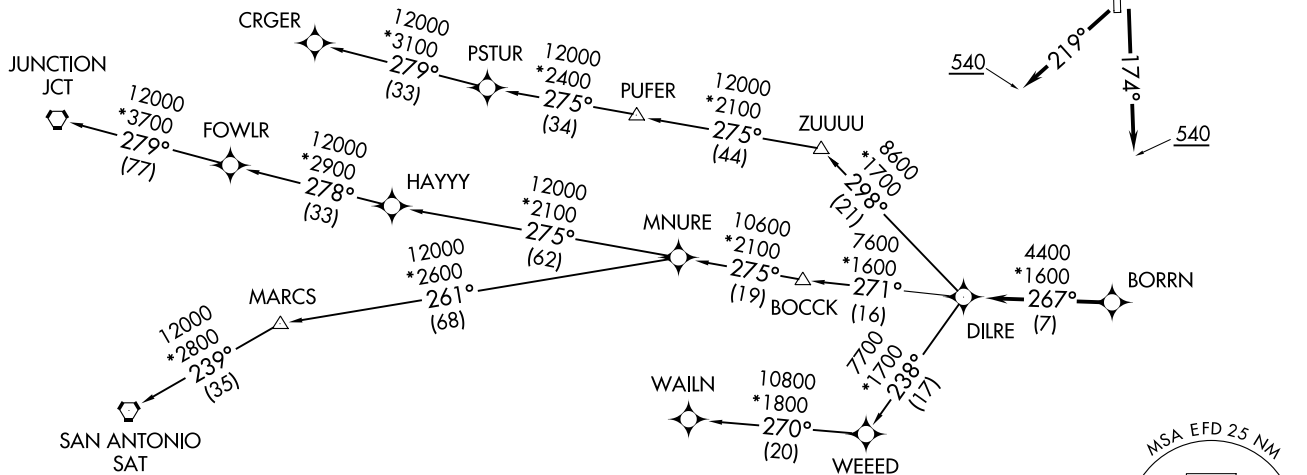
ATIS  
135.575 269.9  
GND CON  
121.6 275.8  
ELLINGTON TOWER  
126.05 253.5  
HOUSTON DEP CON  
134.45 284.0

RNAV 1 - DME/DME/IRU or GPS.

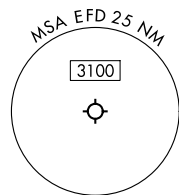
RADAR required.

**TOP ALTITUDE:  
ASSIGNED BY ATC**

**TAKEOFF MINIMUMS**  
Rwys 4, 17L/R, 22, 35L/R:  
Standard with minimum  
climb of 500'/NM to 540.



NOTE: CRGER-TRANSITION ATC assigned only for aircraft departing 54T, AXH, EFD, GLS, HPY, IWS, LBX, LVJ, SGR, TME, TØØ, T41.



NOTE: Chart not to scale.

(NARRATIVE ON FOLLOWING PAGE)

(BORRN6.BORRN) 23334  
BORRN SIX DEPARTURE (RNAV)

AL-197 (FAA)

HOUSTON, TEXAS  
ELLINGTON (EFD)

# BORRN SIX DEPARTURE (RNAV)



## DEPARTURE ROUTE DESCRIPTION

TAKEOFF RUNWAY 4: Climb on heading 039° to 540, for RADAR vectors to BORRN, thence. . . .

TAKEOFF RUNWAYS 17L/R: Climb on heading 174° to 540, for RADAR vectors to BORRN, thence. . . .

TAKEOFF RUNWAY 22: Climb on heading 219° to 540, for RADAR vectors to BORRN, thence. . . .

TAKEOFF RUNWAYS 35L/R: Climb on heading 354° to 540, for RADAR vectors to BORRN, thence. . . .

. . . .on track 267° to DILRE, then on (transition). Maintain ATC assigned altitude. Expect filed altitude 10 minutes after departure.

CRGER TRANSITION (BORRN6.CRGER)

JUNCTION TRANSITION (BORRN6.JCT)

MNURE TRANSITION (BORRN6.MNURE)

SAN ANTONIO TRANSITION (BORRN6.SAT)

WAILN TRANSITION (BORRN6.WAILN)

SC-5, 22 FEB 2024 to 21 MAR 2024

SC-5, 22 FEB 2024 to 21 MAR 2024

(CRIED1 .CRIED) 21280

# CRIED ONE DEPARTURE

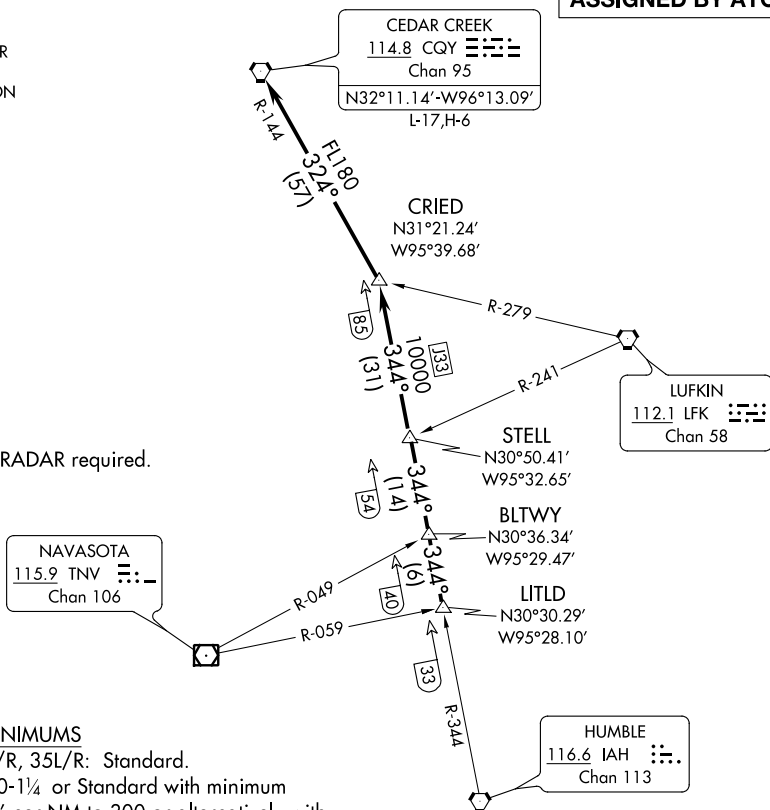
AL-197 (FAA)

ELLINGTON (EFD)  
HOUSTON, TEXAS

ATIS  
135.575 269.9  
GND CON  
121.6 275.8  
ELLINGTON TOWER  
126.05 253.5  
HOUSTON DEP CON  
134.45 284.0

**TOP ALTITUDE:  
ASSIGNED BY ATC**

NOTE: RADAR required.



### TAKEOFF MINIMUMS

Rwys 4, 17L/R, 35L/R: Standard.  
Rwy 22: 200-1¼ or Standard with minimum climb of 214' per NM to 300 or alternatively with standard takeoff minimums and a normal 200' per NM climb gradient, takeoff must occur no later than 1400' prior to DER.

### DEPARTURE ROUTE DESCRIPTION

**TAKEOFF ALL RUNWAYS:** Climb on assigned heading for RADAR vectors to LITLD INT. Maintain ATC assigned altitude. Expect filed altitude 10 minutes after departure, thence . . . .

. . . . on IAH R-344 to STELL INT, then on IAH R-344 to CRIED INT, then left turn on CQY R-144 to CQY VORTAC.

# CRIED ONE DEPARTURE

(CRIED1 .CRIED) 07OCT21

HOUSTON, TEXAS  
ELLINGTON (EFD)

SC-5, 22 FEB 2024 to 21 MAR 2024

SC-5, 22 FEB 2024 to 21 MAR 2024

# EL DORADO ONE DEPARTURE

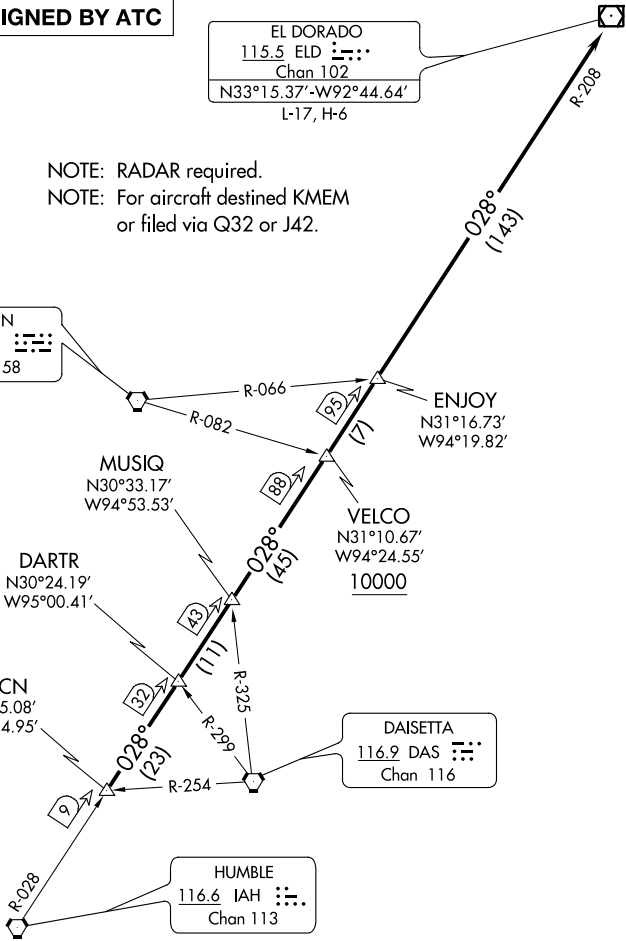
ATIS  
135.575 269.9  
GND CON  
121.6 275.8  
ELLINGTON TOWER  
126.05 253.5  
HOUSTON DEP CON  
134.45 284.0

**TOP ALTITUDE:  
ASSIGNED BY ATC**

EL DORADO  
115.5 ELD  
Chan 102  
N33°15.37'-W92°44.64'  
L-17, H-6

NOTE: RADAR required.  
NOTE: For aircraft destined KMEM  
or filed via Q32 or J42.

LUFKIN  
112.1 LFK  
Chan 58



SC-5, 22 FEB 2024 to 21 MAR 2024

SC-5, 22 FEB 2024 to 21 MAR 2024

### TAKEOFF MINIMUMS

Rwys 4, 17L/R, 35L/R: Standard.  
Rwy 22: 200-1¼ or standard with minimum  
climb of 214' per NM to 300 or alternatively with  
standard takeoff minimums and a normal 200' per  
NM climb gradient, takeoff must occur no later than  
1400' prior to DER.

NOTE: Chart not to scale.

(NARRATIVE ON FOLLOWING PAGE)

# EL DORADO ONE DEPARTURE

(ELD1.ELD) 07OCT21

# EL DORADO ONE DEPARTURE



## DEPARTURE ROUTE DESCRIPTION

TAKEOFF ALL RUNWAYS: Climb on assigned heading for RADAR vectors to RAECN INT. Maintain ATC assigned altitude. Expect filed altitude 10 minutes after departure, thence. . . .

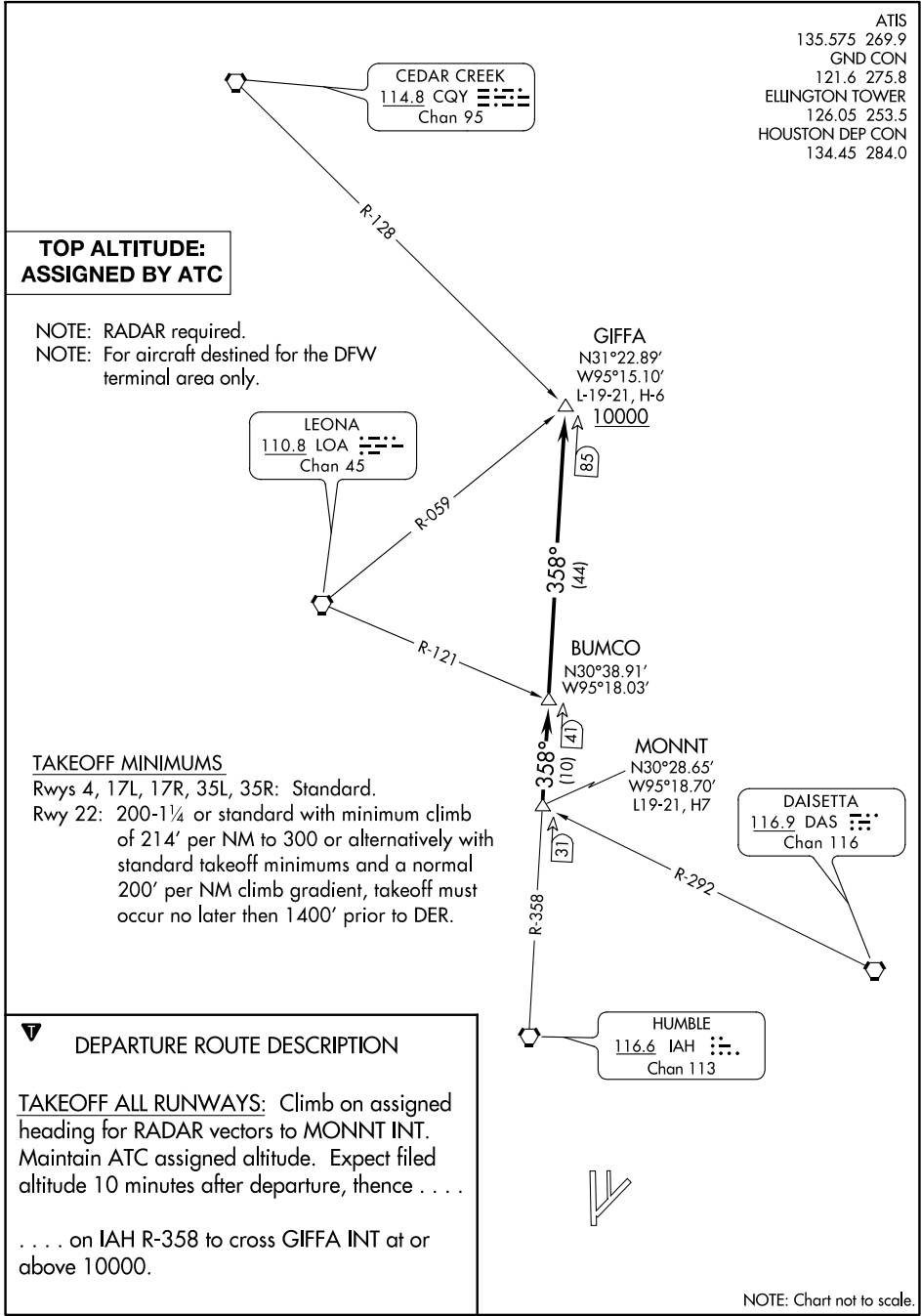
. . . .on IAH R-028 and the ELD R-208 to ELD VOR/DME, cross VELCO INT at or above 10000.

SC-5, 22 FEB 2024 to 21 MAR 2024

SC-5, 22 FEB 2024 to 21 MAR 2024



ATIS  
135.575 269.9  
GND CON  
121.6 275.8  
ELLINGTON TOWER  
126.05 253.5  
HOUSTON DEP CON  
134.45 284.0



**TOP ALTITUDE:  
ASSIGNED BY ATC**

NOTE: RADAR required.  
NOTE: For aircraft destined for the DFW terminal area only.

**GIFFA**  
N31°22.89'  
W95°15.10'  
L-19-21, H-6  
10000

**LEONA**  
110.8 LOA  
Chan 45

**BUMCO**  
N30°38.91'  
W95°18.03'

**MONNT**  
N30°28.65'  
W95°18.70'  
L19-21, H7

**DAISETTA**  
116.9 DAS  
Chan 116

**HUMBLE**  
116.6 IAH  
Chan 113

TAKEOFF MINIMUMS

Rwys 4, 17L, 17R, 35L, 35R: Standard.  
Rwy 22: 200-1¼ or standard with minimum climb of 214' per NM to 300 or alternatively with standard takeoff minimums and a normal 200' per NM climb gradient, takeoff must occur no later than 1400' prior to DER.

**DEPARTURE ROUTE DESCRIPTION**

TAKEOFF ALL RUNWAYS: Climb on assigned heading for RADAR vectors to MONNT INT. Maintain ATC assigned altitude. Expect filed altitude 10 minutes after departure, thence . . . .

. . . . on IAH R-358 to cross GIFFA INT at or above 10000.



NOTE: Chart not to scale.

SC-5, 22 FEB 2024 to 21 MAR 2024

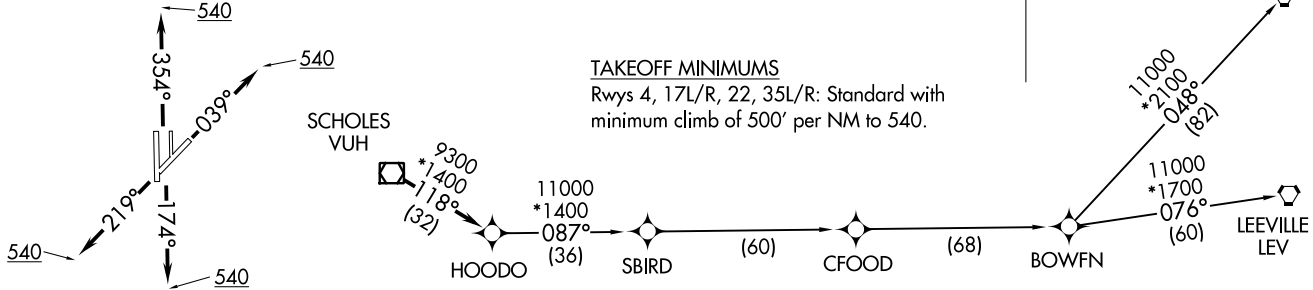
SC-5, 22 FEB 2024 to 21 MAR 2024

HOODO SEVEN DEPARTURE (RNAV)  
(HOODO7.HOODO) 07OCT21

ATIS  
135.575 269.9  
GND CON  
121.6 275.8  
ELLINGTON TOWER  
126.05 253.5  
HOUSTON DEP CON  
134.45 284.0

NOTE: RNAV 1.  
NOTE: RADAR required.  
NOTE: ATC assigned only.  
NOTE: DME/DME/IRU or GPS required.  
NOTE: For non-GPS equipped aircraft, LCH, LLA, TBD, and LEV DME's must be operational.

**TOP ALTITUDE:  
ASSIGNED BY ATC**



**TAKEOFF MINIMUMS**  
Rwys 4, 17L/R, 22, 35L/R: Standard with minimum climb of 500' per NM to 540.

NOTE: Chart not to scale.



**DEPARTURE ROUTE DESCRIPTION**

TAKEOFF RUNWAY 4: Climb on heading 039° to 540, for RADAR vectors to VUH VOR/DME, thence . . . .  
TAKEOFF RUNWAYS 17L/R: Climb on heading 174° to 540, for RADAR vectors to VUH VOR/DME, thence . . . .  
TAKEOFF RUNWAY 22: Climb on heading 219° to 540, for RADAR vectors to VUH VOR/DME, thence . . . .  
TAKEOFF RUNWAYS 35L/R: Climb on heading 354° to 540, for RADAR vectors to VUH VOR/DME, thence . . . .  
 . . . . on track 118° to HOODO, then on (transition). Maintain ATC assigned altitude.  
 Expect filed altitude 10 minutes after departure.

- BOWFN TRANSITION (HOODO7.BOWFN)
- CFOOD TRANSITION (HOODO7.CFOOD)
- HARVEY TRANSITION (HOODO7.HRV)
- LEEVILLE TRANSITION (HOODO7.LEV)
- SBIRD TRANSITION (HOODO7.SBIRD)

HOUSTON, TEXAS  
ELLINGTON (EFD)

(HOODO7.HOODO) 21280  
HOODO SEVEN DEPARTURE (RNAV)  
AL-197 (FAA)

ELLINGTON (EFD)  
HOUSTON, TEXAS

(INDIE8.INDIE) 21280

AL-197 (FAA)

ELLINGTON (EFD)  
HOUSTON, TEXAS

# INDIE EIGHT DEPARTURE (RNAV)

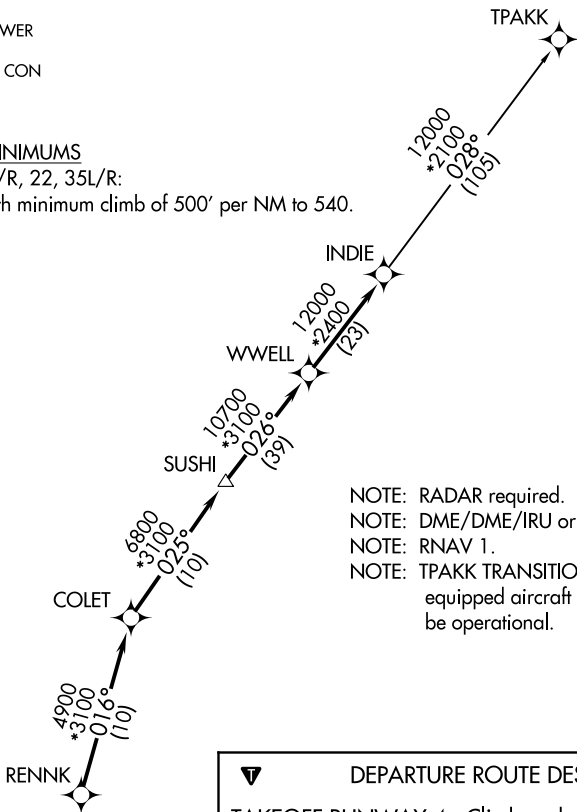
ATIS  
135.575 269.9  
GND CON  
121.6 275.8  
ELLINGTON TOWER  
126.05 253.5  
HOUSTON DEP CON  
134.45 284.0

**TOP ALTITUDE:  
ASSIGNED BY ATC**

### TAKEOFF MINIMUMS

Rwys 4, 17L/R, 22, 35L/R:

Standard with minimum climb of 500' per NM to 540.



- NOTE: RADAR required.
- NOTE: DME/DME/IRU or GPS required.
- NOTE: RNAV 1.
- NOTE: TPAKK TRANSITION: For non GPS equipped aircraft TNV DME must be operational.

### DEPARTURE ROUTE DESCRIPTION

**TAKEOFF RUNWAY 4:** Climb on heading 039° to 540 for RADAR vectors to RENNK, thence . . . .

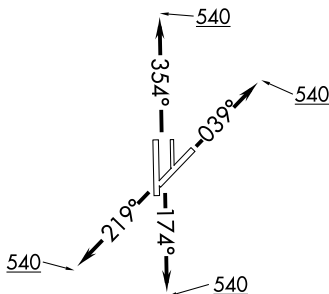
**TAKEOFF RUNWAYS 17L/R:** Climb on heading 174° to 540 for RADAR vectors to RENNK, thence . . . .

**TAKEOFF RUNWAY 22:** Climb on heading 219° to 540 for RADAR vectors to RENNK, thence . . . .

**TAKEOFF RUNWAYS 35L/R:** Climb on heading 354° to 540 for RADAR vectors to RENNK, thence . . . .

. . . . on track 016° to COLET, then on track 025° to SUSHI, then on track 026° to WWELL, then on track 026° to INDIE, then on (transition). Maintain ATC assigned altitude. Expect filed altitude 10 minutes after departure.

**TPAKK TRANSITION (INDIE8.TPAKK)**



NOTE: Chart not to scale.

SC-5, 22 FEB 2024 to 21 MAR 2024

SC-5, 22 FEB 2024 to 21 MAR 2024

# INDIE EIGHT DEPARTURE (RNAV)

(INDIE8.INDIE) 07OCT21

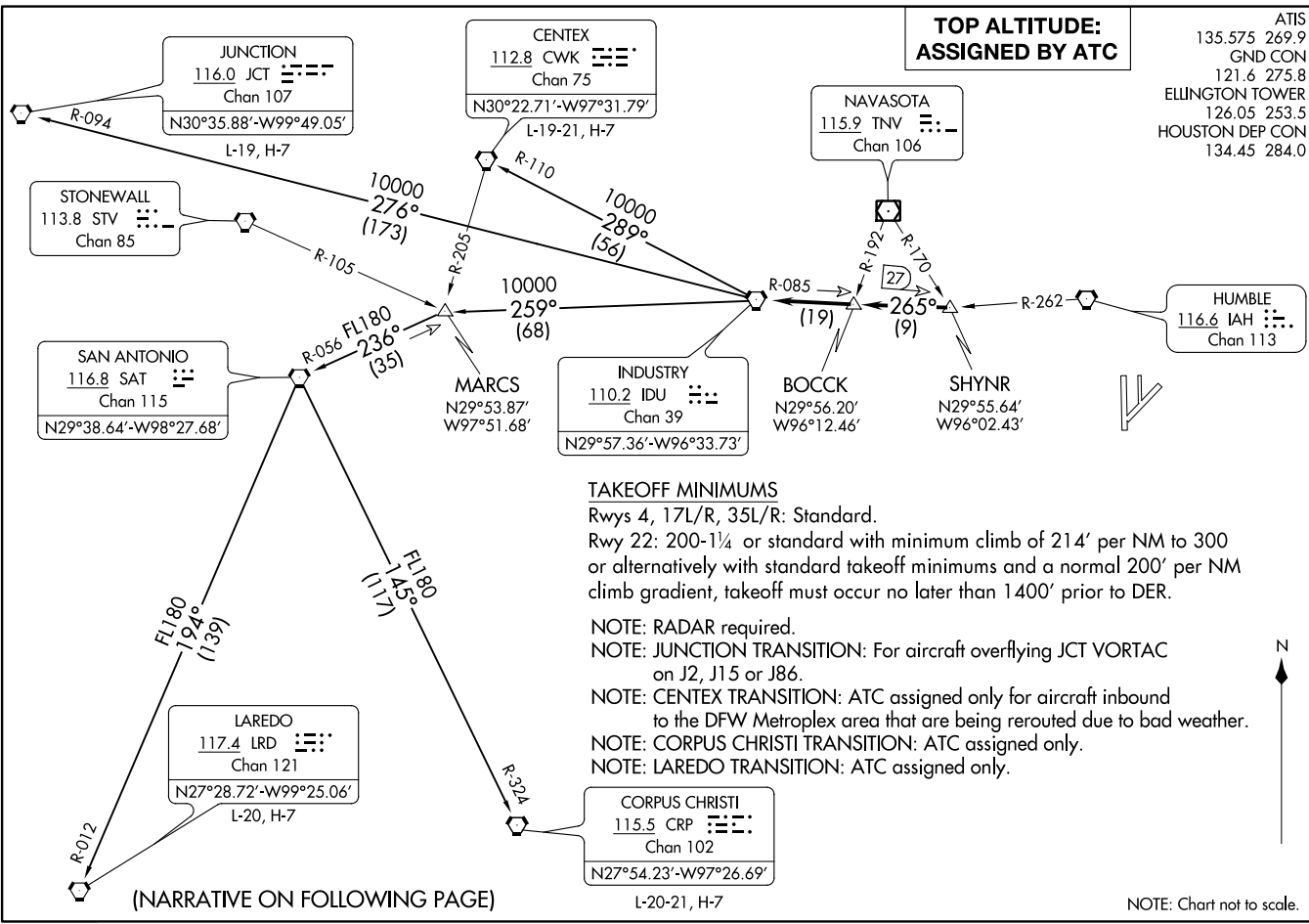
HOUSTON, TEXAS  
ELLINGTON (EFD)

INDUSTRY ONE DEPARTURE  
(IDU1, IDU) 070CT21

INDUSTRY ONE DEPARTURE  
(IDU1, IDU) 21280

ATIS  
135.575 269.9  
GND CON  
121.6 275.8  
ELLINGTON TOWER  
126.05 253.5  
HOUSTON DEP CON  
134.45 284.0

**TOP ALTITUDE:  
ASSIGNED BY ATC**



**TAKEOFF MINIMUMS**

Rwys 4, 17L/R, 35L/R: Standard.  
Rwy 22: 200-1¼ or standard with minimum climb of 214' per NM to 300 or alternatively with standard takeoff minimums and a normal 200' per NM climb gradient, takeoff must occur no later than 1400' prior to DER.

- NOTE: RADAR required.
- NOTE: JUNCTION TRANSITION: For aircraft overflying JCT VORTAC on J2, J15 or J86.
- NOTE: CENTEX TRANSITION: ATC assigned only for aircraft inbound to the DFW Metroplex area that are being rerouted due to bad weather.
- NOTE: CORPUS CHRISTI TRANSITION: ATC assigned only.
- NOTE: LAREDO TRANSITION: ATC assigned only.

(NARRATIVE ON FOLLOWING PAGE)

NOTE: Chart not to scale.

HOUSTON, TEXAS  
ELLINGTON (EFD)

ELLINGTON (EFD)  
HOUSTON, TEXAS



DEPARTURE ROUTE DESCRIPTION

TAKEOFF ALL RUNWAYS: Climb on assigned heading for RADAR vectors to SHYNR INT. Maintain ATC assigned altitude. Expect filed altitude 10 minutes after departure, thence . . . .

. . . . on IDU R-085 to BOCCK INT, then on IDU R-085 to IDU VORTAC.

CENTEX TRANSITION (IDU1.CWK): From over IDU VORTAC on IDU R-289 and CWK R-110 to CWK VORTAC.

CORPUS CHRISTI TRANSITION (IDU1.CRP): From over IDU VORTAC on IDU R-259 to MARCS INT, then on SAT R-056 to SAT VORTAC, then on SAT R-145 and CRP R-324 to CRP VORTAC.

JUNCTION TRANSITION (IDU1.JCT): From over IDU VORTAC on IDU R-276 and JCT R-094 to JCT VORTAC.

LAREDO TRANSITION (IDU1.LRD): From over IDU VORTAC on IDU R-259 to MARCS INT, then on SAT R-056 to SAT VORTAC, then on SAT R-194 and LRD R-012 to LRD VORTAC.

SC-5, 22 FEB 2024 to 21 MAR 2024

SC-5, 22 FEB 2024 to 21 MAR 2024

RNAV-1 DME/DME/IRU or GPS.

RADAR required.

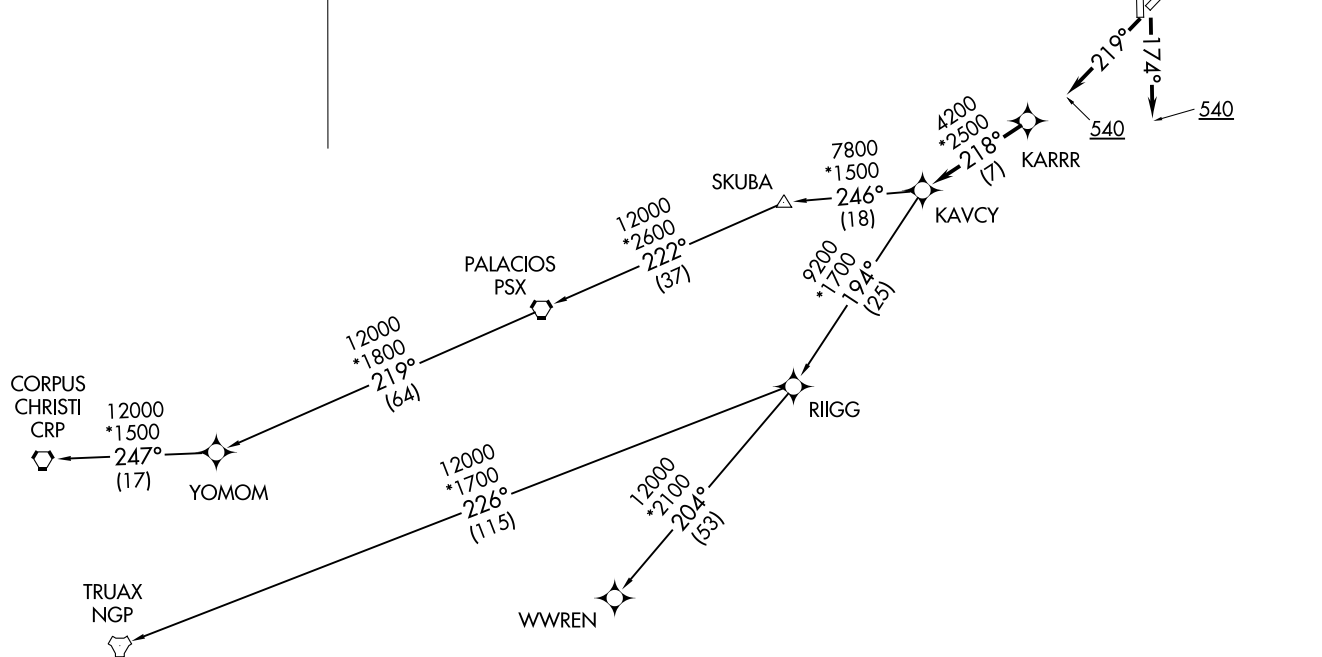
**TOP ALTITUDE:  
ASSIGNED BY ATC**

ATIS  
135.575 269.9  
GND CON  
121.6 275.8  
ELLINGTON TOWER  
126.05 253.5  
HOUSTON DEP CON  
134.45 284.0

TAKEOFF MINIMUMS

Rwys 4, 17L/R, 22, 35L/R:

Standard with minimum climb of 500' per NM to 540.



KARRR SEVEN DEPARTURE (RNAV)  
(KARRR7.KARRR) 29DEC22

HOUSTON, TEXAS  
ELLINGTON (EFTD)

(KARRR7.KARRR) 23222  
KARRR SEVEN DEPARTURE (RNAV)

AL-197 (FAA)

ELLINGTON (EFTD)  
HOUSTON, TEXAS

(NARRATIVE ON FOLLOWING PAGE)

NOTE: Chart not to scale.

# KARRR SEVEN DEPARTURE(RNAV)



## DEPARTURE ROUTE DESCRIPTION

TAKEOFF RUNWAY 4: Climb on heading 039° to 540, for RADAR vectors to KARRR, thence. . . .

TAKEOFF RUNWAYS 17L/R: Climb on heading 174° to 540, for RADAR vectors to KARRR, thence. . . .

TAKEOFF RUNWAY 22: Climb on heading 219° to 540, for RADAR vectors to KARRR, thence. . . .

TAKEOFF RUNWAYS 35L/R: Climb on heading 354° to 540, for RADAR vectors to KARRR, thence. . . .

. . . .on track 218° to KAVCY, then on (transition). Maintain ATC assigned altitude. Expect filed altitude 10 minutes after departure.

CORPUS CHRISTI TRANSITION (KARRR7.CRP)

PALACIOS TRANSITION (KARRR7.PSX)

TRUAX TRANSITION (KARRR7.NGP)

WWREN TRANSITION (KARRR7.WWREN)

YOMOM TRANSITION (KARRR7.YOMOM)

SC-5, 22 FEB 2024 to 21 MAR 2024

SC-5, 22 FEB 2024 to 21 MAR 2024

# LEONA FOUR DEPARTURE

AL-197 (FAA)

ELLINGTON (EFD)  
HOUSTON, TEXAS

**TOP ALTITUDE: ASSIGNED BY ATC**

ATIS  
135.575 269.9  
HOUSTON DEP CON  
134.45 284.0  
GND CON  
121.6 275.8  
ELLINGTON TOWER  
126.05 253.5

ARDMORE  
116.7 ADM :  
Chan 114  
N34°12.69' - W97°10.10'  
L-17, H-6

TULSA  
114.4 TUL :  
Chan 91  
N36°11.78' - W95°47.29'

BONHAM  
114.6 BYP :  
Chan 93  
N33°32.25' - W96°14.05'  
L-17, H-6

RANGER  
115.7 FUZ :  
Chan 104  
N32°53.37' - W97°10.77'  
L-17, H-6

CEDAR CREEK  
114.8 CQY :  
Chan 95  
N32°11.14' - W96°13.09'

DOLEY  
N32°11.35'  
W96°23.08'

WACO  
115.3 ACT :  
Chan 100  
N31°39.74' - W97°16.14'

LEONA  
110.8 LOA :  
Chan 45  
N31°07.44' - W95°58.08'

NAVASOTA  
115.9 TNV :  
Chan 106

WLLIS  
N30°32.08'  
W95°39.10'

HUMBLE  
116.6 IAH :  
Chan 113

### TAKEOFF MINIMUMS

Rwys 4, 17L/R, 35L/R: Standard.

Rwy 22: 200-1¼ or standard with minimum climb of 214' per NM to 300 or alternatively with standard takeoff minimums and a normal 200' per NM climb gradient, takeoff must occur no later than 1400' prior to DER.

NOTE: RADAR required.

NOTE: Except for aircraft destined ACT or the DFW terminal area, all aircraft filing the LEONA SID must file one of the published transitions via FUZ (LOA4.FUZ), ADM (LOA4.ADM), or BYP (LOA4.BYP).

NOTE: RANGER TRANSITION: For aircraft overflying west/northwest of the DFW terminal area FL240 and above.

NOTE: ARDMORE TRANSITION: For aircraft overflying north/northwest of the DFW terminal area FL240 and above.

NOTE: BONHAM TRANSITION: For aircraft overflying/landing TUL VORTAC FL240 and above.



NOTE: Chart not to scale.

(NARRATIVE ON FOLLOWING PAGE)

# LEONA FOUR DEPARTURE

(LOA4.LOA) 07OCT21

HOUSTON, TEXAS  
ELLINGTON (EFD)

SC-5, 22 FEB 2024 to 21 MAR 2024

SC-5, 22 FEB 2024 to 21 MAR 2024





DEPARTURE ROUTE DESCRIPTION

TAKEOFF ALL RUNWAYS: Climb on assigned heading for RADAR vectors to WLLIS INT. Maintain ATC assigned altitude. Expect filed altitude 10 minutes after departure, thence . . . .

. . . . on LOA R-147 to LOA VORTAC.

ARDMORE TRANSITION (LOA4.ADM): From over LOA VORTAC on LOA R-334 to DOLEY INT, then on ADM R-156 to ADM VORTAC.

BONHAM TRANSITION (LOA4.BYP): From over LOA VORTAC on LOA R-341 and CQY R-163 to CQY VORTAC, then on BYP R-173 to BYP VORTAC.

RANGER TRANSITION (LOA4.FUZ): From over LOA VORTAC on LOA R-334 to DOLEY INT, then on FUZ R-130 to FUZ VORTAC.

SC-5, 22 FEB 2024 to 21 MAR 2024

SC-5, 22 FEB 2024 to 21 MAR 2024

# LUFKIN THREE DEPARTURE

ATIS  
135.575 269.9  
GND CON  
121.6 275.8  
ELLINGTON TOWER  
126.05 253.5  
HOUSTON DEP CON  
134.45 284.0

**TOP ALTITUDE:  
ASSIGNED BY ATC**

LITTLE ROCK  
113.9 LIT :...  
Chan 86  
N34°40.66'  
W92°10.83'  
L-18, H-6

NOTE: RADAR and DME required.  
NOTE: For aircraft destined LIT or  
overflying LIT or PXV.

LUFKIN  
112.1 LFK :...  
Chan 58  
N31°09.75'  
W94°43.01'

SUSHI  
N30°35.48'  
W95°04.39'

COLET  
N30°26.96'  
W95°09.66'

KYANN  
N30°15.53'  
W95°13.96'

HUMBLE  
116.6 IAH :...  
Chan 113

DAISETTA  
116.9 DAS :...  
Chan 116

### TAKEOFF MINIMUMS

Rwys 4, 17L/R, 35L/R: Standard.

Rwy 22: 200-1¼ or standard with minimum climb  
of 214' per NM to 300 or alternatively with  
standard takeoff minimums and a normal  
200' per NM climb gradient, takeoff must  
occur no later than 1400' prior to DER.



NOTE: Chart not to scale.

(NARRATIVE ON FOLLOWING PAGE)

# LUFKIN THREE DEPARTURE

SC-5, 22 FEB 2024 to 21 MAR 2024

SC-5, 22 FEB 2024 to 21 MAR 2024

# LUFKIN THREE DEPARTURE



## DEPARTURE ROUTE DESCRIPTION

TAKEOFF ALL RUNWAYS: Climb on assigned heading for RADAR vectors to KYANN INT. Maintain ATC assigned altitude. Expect filed altitude 10 minutes after departure, thence. . . .

. . . .on IAH R-013 to COLET INT, then right turn on LFK R-203 to LFK VORTAC.

LITTLE ROCK TRANSITION (LFK3.LIT): From over LFK VORTAC on LFK R-026 to SKKIP INT, then on LFK R-026 and LIT R-207 to LIT VORTAC.

SC-5, 22 FEB 2024 to 21 MAR 2024

SC-5, 22 FEB 2024 to 21 MAR 2024

LURIC EIGHT DEPARTURE (RNAV)

ATIS  
135.575 269.9  
GND CON  
121.6 275.8  
ELLINGTON TOWER  
126.05 253.5  
HOUSTON DEP CON  
134.45 284.0

TOP ALTITUDE: ASSIGNED BY ATC

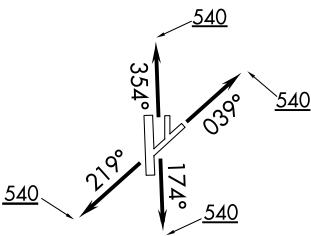
NOTE: RADAR required.  
NOTE: DME/DME/IRU or GPS required.  
NOTE: RNAV 1.

TAKEOFF MINIMUMS  
Rwys 4, 17L/R, 22, 35L/R:  
Standard with minimum  
climb of 500' per NM to 540.

DEPARTURE ROUTE DESCRIPTION

**TAKEOFF RUNWAY 4:** Climb on heading 039° to 540 for RADAR vectors to KNTKY, thence . . .  
**TAKEOFF RUNWAYS 17L/R:** Climb on heading 174° to 540 for RADAR vectors to KNTKY, thence . . .  
**TAKEOFF RUNWAY 22:** Climb on heading 219° to 540 for RADAR vectors to KNTKY, thence . . .  
**TAKEOFF RUNWAYS 35L/R:** Climb on heading 354° to 540 for RADAR vectors to KNTKY, thence . . .  
. . . . on track 032° to PEETY, then on track 032° to DARTR, then on track 031° to MUSIQ, then on track 031° to CLAVN, then on track 031° to VELCO, then on track 031° to ENJOY, then on track 031° to LURIC, then on (transition). Maintain ATC assigned altitude. Expect filed altitude 10 minutes after departure.

HAWES TRANSITION (LURIC8.HAWES)  
ORRTH TRANSITION (LURIC8.ORRTH)



NOTE: Chart not to scale.

SC-5, 22 FEB 2024 to 21 MAR 2024

SC-5, 22 FEB 2024 to 21 MAR 2024

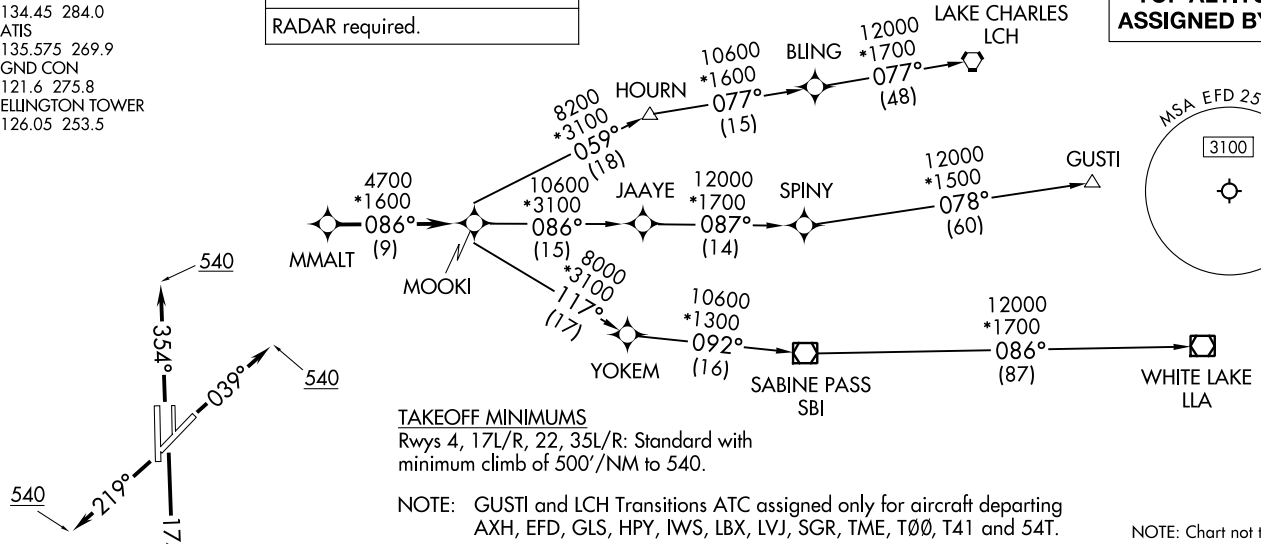
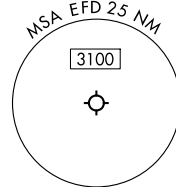
MMALT SEVEN DEPARTURE (RNAV)  
(MMALT7.MMALT) 30NOV23

HOUSTON, TEXAS  
ELLINGTON (E,F,D)

HOUSTON DEP CON  
134.45 284.0  
ATIS  
135.575 269.9  
GND CON  
121.6 275.8  
ELLINGTON TOWER  
126.05 253.5

RNAV 1 - DME/DME/IRU or GPS.  
RADAR required.

**TOP ALTITUDE:  
ASSIGNED BY ATC**



**TAKEOFF MINIMUMS**  
Rwys 4, 17L/R, 22, 35L/R: Standard with  
minimum climb of 500'/NM to 540.

**NOTE:** GUSTI and LCH Transitions ATC assigned only for aircraft departing  
AXH, EFD, GLS, HPY, IWS, LBX, LVJ, SGR, TME, T00, T41 and 54T.

NOTE: Chart not to scale.

**DEPARTURE ROUTE DESCRIPTION**

- TAKEOFF RUNWAY 4: Climb on heading 039° to 540, for RADAR vectors to MMALT, thence. . . .
- TAKEOFF RUNWAYS 17L/R: Climb on heading 174° to 540, for RADAR vectors to MMALT, thence. . . .
- TAKEOFF RUNWAY 22: Climb on heading 219° to 540, for RADAR vectors to MMALT, thence. . . .
- TAKEOFF RUNWAYS 35L/R: Climb on heading 354° to 540, for RADAR vectors to MMALT, thence. . . .

. . . .on track 086° to MOOKI, then on (transition). Maintain ATC assigned altitude.  
Expect filed altitude 10 minutes after departure.

- GUSTI TRANSITION (MMALT7.GUSTI)
- LAKE CHARLES TRANSITION (MMALT7.LCH)
- WHITE LAKE TRANSITION (MMALT7.LLA)

(MMALT7.MMALT) 23334  
MMALT SEVEN DEPARTURE (RNAV)

AL-197 (FAA)

ELLINGTON (E,F,D)  
HOUSTON, TEXAS

RADAR and DME required.

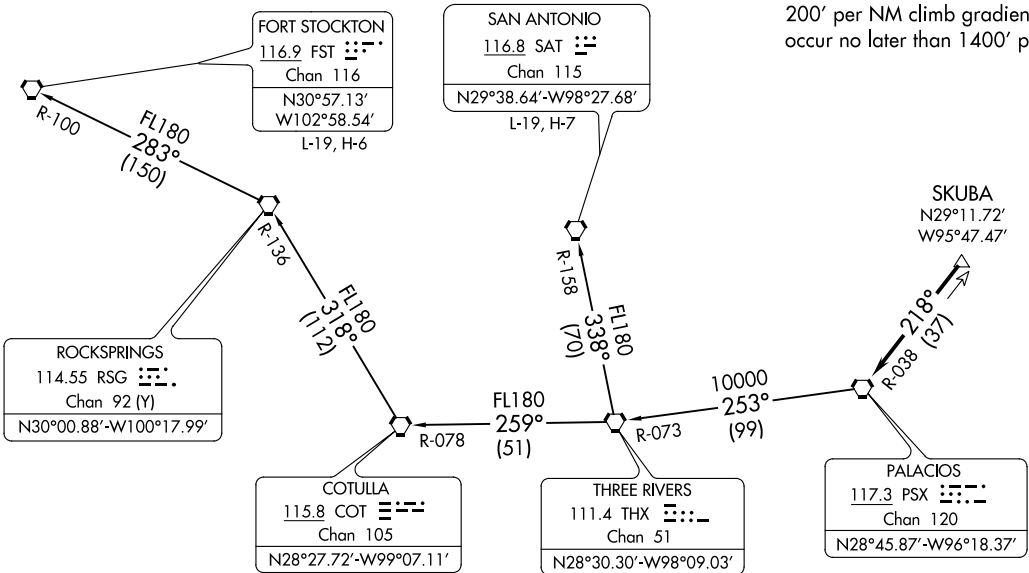
**TOP ALTITUDE:  
ASSIGNED BY ATC**

TAKEOFF MINIMUMS

Rwys 4, 17L/R, 35L/R: Standard.

Rwy 22: 200-1¼ or standard with minimum climb of 214' per NM to 300 or alternatively with standard takeoff minimums and a normal 200' per NM climb gradient, takeoff must occur no later than 1400' prior to DER.

ATIS  
135.575 269.9  
GND CON  
121.6 275.8  
ELLINGTON TOWER  
126.05 253.5  
HOUSTON DEP CON  
134.45 284.0



(NARRATIVE ON FOLLOWING PAGE)

NOTE: Chart not to scale.

PALACIOS THREE DEPARTURE  
(PSX3.PSX) 03NOV22

HOUSTON, TEXAS  
ELLINGTON (EFTD)

(PSX3.PSX) 22307  
PALACIOS THREE DEPARTURE

AL-197 (FAA)

ELLINGTON (EFTD)  
HOUSTON, TEXAS



DEPARTURE ROUTE DESCRIPTION

TAKEOFF ALL RUNWAYS: Climb on assigned heading for RADAR vectors to SKUBA. Maintain ATC assigned altitude. Expect filed altitude 10 minutes after departure, thence . . . .

. . . . on PSX R-038 to PSX VORTAC.

FORT STOCKTON TRANSITION (PSX3.FST): From over PSX VORTAC on PSX R-253 and THX R-073 to THX VORTAC, then on THX R-259 and COT R-078 to COT VORTAC, then on COT R-318 and RSG R-136 to RSG VORTAC, then on RSG R-283 and FST R-100 to FST VORTAC.

SAN ANTONIO TRANSITION (PSX3.SAT): From over PSX VORTAC on PSX R-253 and THX R-073 to THX VORTAC, then on SAT R-158 to SAT VORTAC.

SC-5, 22 FEB 2024 to 21 MAR 2024

SC-5, 22 FEB 2024 to 21 MAR 2024

# STRYA EIGHT DEPARTURE (RNAV)

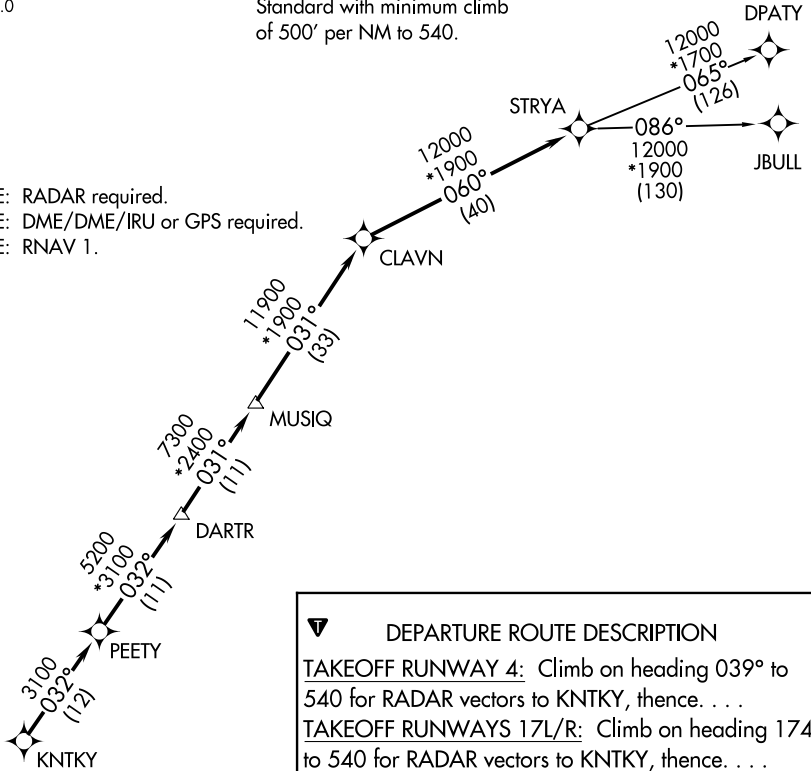
**TOP ALTITUDE: ASSIGNED BY ATC**

ATIS  
135.575 269.9  
GND CON  
121.6 275.8  
ELLINGTON TOWER  
126.05 253.5  
HOUSTON DEP CON  
134.45 284.0

### TAKEOFF MINIMUMS

Rwys 4, 17L/R, 22, 35L/R:  
Standard with minimum climb  
of 500' per NM to 540.

NOTE: RADAR required.  
NOTE: DME/DME/IRU or GPS required.  
NOTE: RNAV 1.



**DEPARTURE ROUTE DESCRIPTION**

TAKEOFF RUNWAY 4: Climb on heading 039° to 540 for RADAR vectors to KNTKY, thence. . . .

TAKEOFF RUNWAYS 17L/R: Climb on heading 174° to 540 for RADAR vectors to KNTKY, thence. . . .

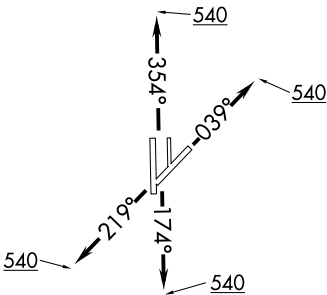
TAKEOFF RUNWAY 22: Climb on heading 219° to 540 for RADAR vectors to KNTKY, thence. . . .

TAKEOFF RUNWAYS 35L/R: Climb on heading 354° to 540 for RADAR vectors to KNTKY, thence. . . .

. . . . on track 032° to PEETY, then on track 032° to DARTR, then on track 031° to MUSIQ, then on track 031° to CLAVN, then on track 060° to STRYA, then on (transition). Maintain ATC assigned altitude. Expect filed altitude 10 minutes after departure.

DPATY TRANSITION (STRYA8.DPATY)

JBULL TRANSITION (STRYA8.JBULL)



NOTE: Chart not to scale.

SC-5, 22 FEB 2024 to 21 MAR 2024

SC-5, 22 FEB 2024 to 21 MAR 2024

# STRYA EIGHT DEPARTURE (RNAV)

(STRYA8.STRYA) 07OCT21



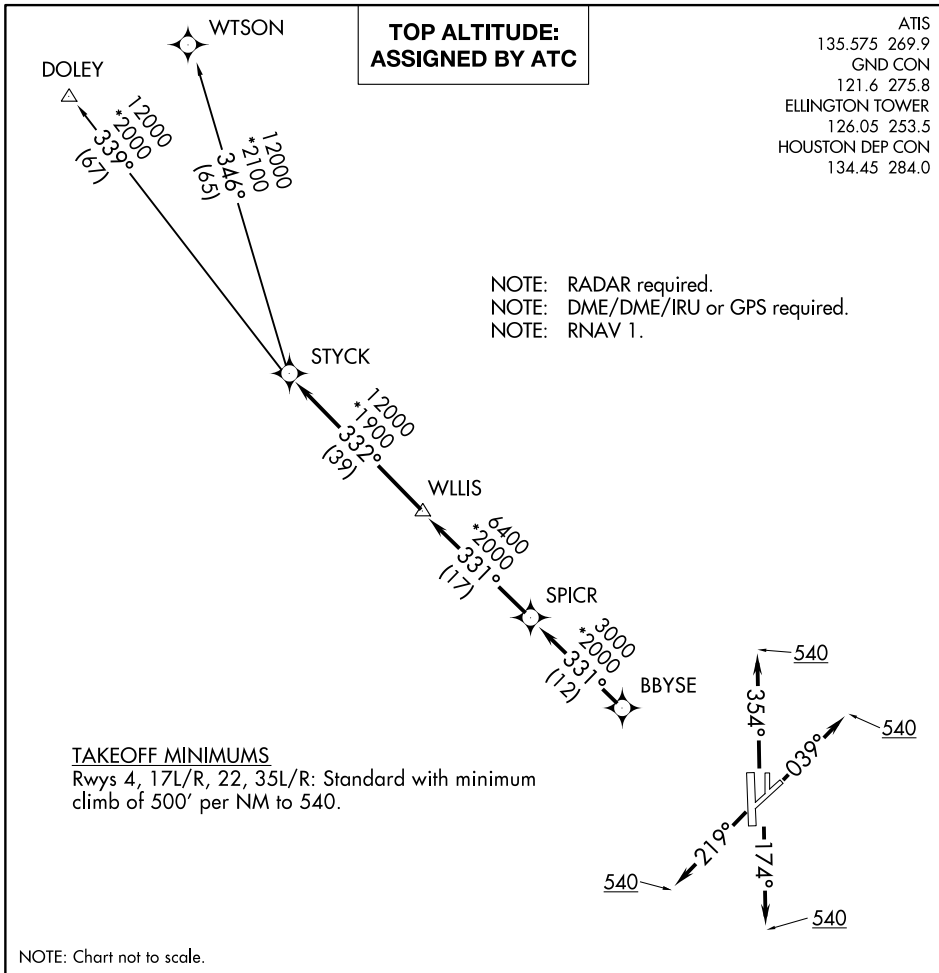
(STYCK8.STYCK) 21280

AL-197 (FAA)

ELLINGTON (EFD)

# STYCK EIGHT DEPARTURE (RNAV)

HOUSTON, TEXAS



## DEPARTURE ROUTE DESCRIPTION

TAKEOFF RUNWAY 4: Climb on heading 039° to 540 for RADAR vectors to BBYSE, thence. . .

TAKEOFF RUNWAYS 17L/R: Climb on heading 174° to 540 for RADAR vectors to BBYSE, thence. . .

TAKEOFF RUNWAY 22: Climb on heading 219° to 540 for RADAR vectors to BBYSE, thence. . .

TAKEOFF RUNWAYS 35L/R: Climb on heading 354° to 540 for RADAR vectors to BBYSE, thence. . .

. . . on track 331° to SPICR, then on track 331° to WLLIS, then on track 332° to STYCK, then on (transition). Maintain ATC assigned altitude. Expect filed altitude 10 minutes after departure.

DOLEY TRANSITION (STYCK8.DOLEY)  
WTSON TRANSITION (STYCK8.WTSON)

# STYCK EIGHT DEPARTURE (RNAV)

(STYCK8.STYCK) 07OCT21

HOUSTON, TEXAS  
ELLINGTON (EFD)

SC-5, 22 FEB 2024 to 21 MAR 2024

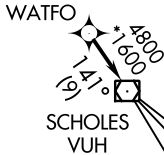
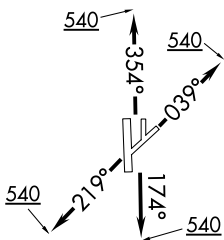
SC-5, 22 FEB 2024 to 21 MAR 2024

# WATFO SIX DEPARTURE (RNAV)

RNAV 1 - DME/DME/IRU or GPS.  
RADAR required.

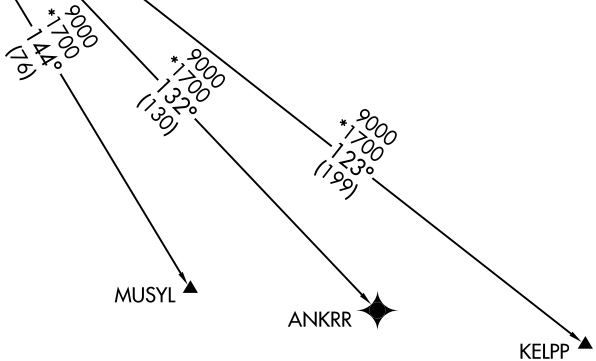
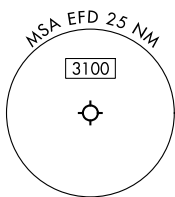
**TOP ALTITUDE:  
ASSIGNED BY ATC**

ATIS  
135.575 269.9  
GND CON  
121.6 275.8  
ELLINGTON TOWER  
126.05 253.5  
HOUSTON DEP CON  
134.45 284.0



TAKEOFF MINIMUMS:

Rwy 4, 17L/R, 22, 35L/R: Standard with minimum climb of 500'/NM to 540.



NOTE: Chart not to scale.



## DEPARTURE ROUTE DESCRIPTION

TAKEOFF RUNWAY 4: Climb on heading 039° to 540, for RADAR vectors to WATFO, thence. . . .

TAKEOFF RUNWAYS 17L/R: Climb on heading 174° to 540, for RADAR vectors to WATFO, thence. . . .

TAKEOFF RUNWAY 22: Climb on heading 219° to 540, for RADAR vectors to WATFO, thence. . . .

TAKEOFF RUNWAYS 35L/R: Climb on heading 354° to 540, for RADAR vectors to WATFO, thence. . . .

. . . on track 141° to VUH VOR/DME, then on (transition). Maintain ATC assigned altitude.  
Expect filed altitude 10 minutes after departure.

ANKRR TRANSITION (WATFO6.ANKRR)  
KELPP TRANSITION (WATFO6.KELPP)  
MUSYL TRANSITION (WATFO6.MUSYL)

# WYLSN EIGHT DEPARTURE (RNAV)

ATIS  
 135.575 269.9  
 GND CON  
 121.6 275.8  
 ELLINGTON TOWER  
 126.05 253.5  
 HOUSTON DEP CON  
 134.45 284.0

**TOP ALTITUDE:  
 ASSIGNED BY ATC**

NOTE: RADAR required.  
 NOTE: DME/DME/IRU or GPS required.  
 NOTE: RNAV 1.

### TAKEOFF MINIMUMS

Rwys 4, 17L/R, 22, 35L/R: Standard with minimum climb of 500' per NM to 540.

### DEPARTURE ROUTE DESCRIPTION

TAKEOFF RUNWAY 4: Climb on heading 039° to 540 for RADAR vectors to WYLSN, thence. . . .

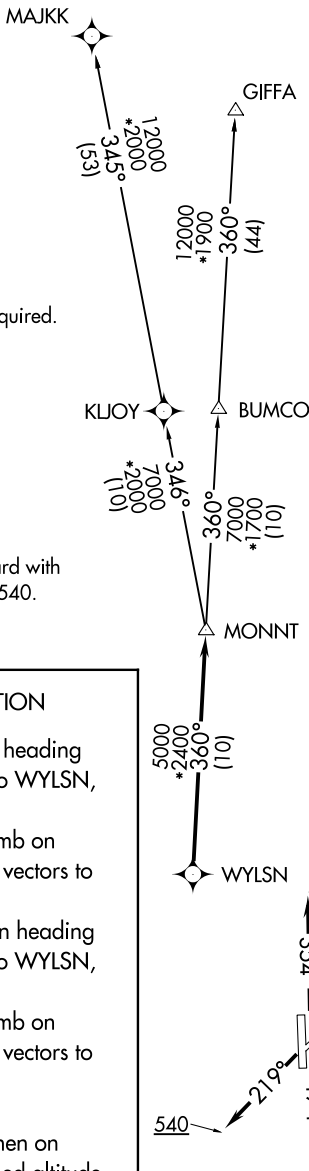
TAKEOFF RUNWAYS 17L/R: Climb on heading 174° to 540 for RADAR vectors to WYLSN, thence. . . .

TAKEOFF RUNWAY 22: Climb on heading 219° to 540 for RADAR vectors to WYLSN, thence. . . .

TAKEOFF RUNWAYS 35L/R: Climb on heading 354° to 540 for RADAR vectors to WYLSN, thence. . . .

. . . .on track 360° to MONNT, then on (transition). Maintain ATC assigned altitude. Expect filed altitude 10 minutes after departure.

GIFFA TRANSITION (WYLSN8.GIFFA)  
MAJKK TRANSITION (WYLSN8.MAJKK)



NOTE: Chart not to scale.

# WYLSN EIGHT DEPARTURE (RNAV)