

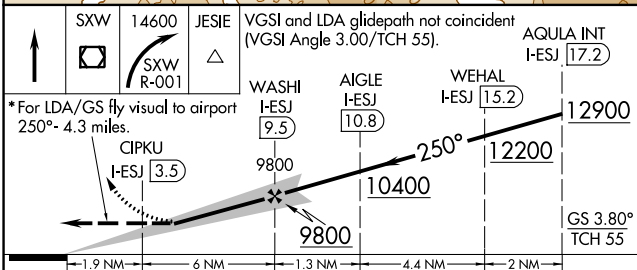
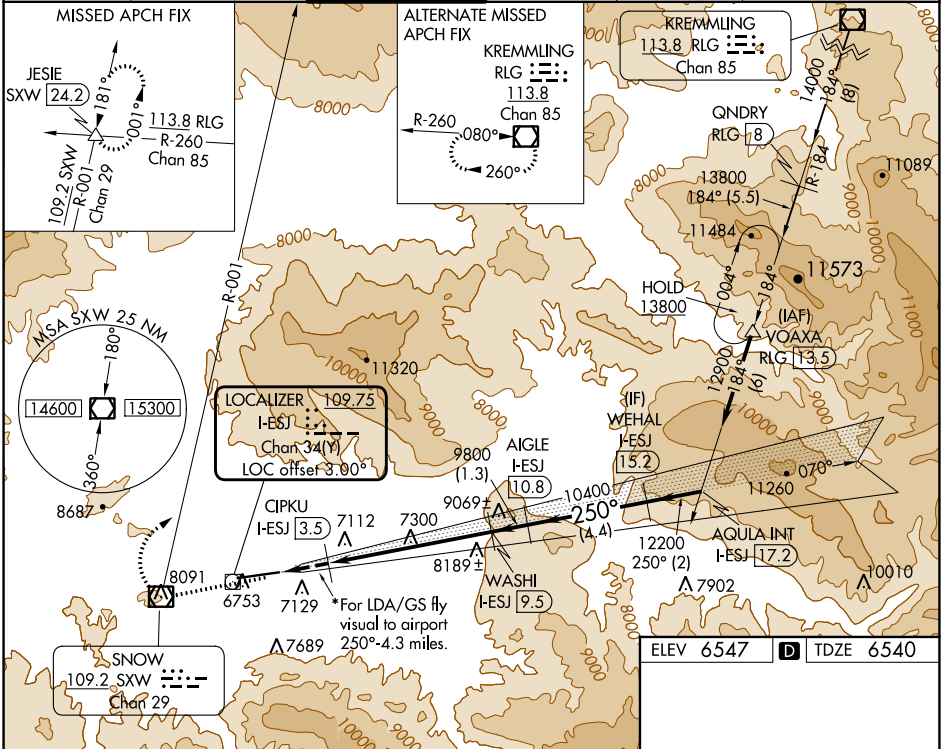
LOC/DME I-ESJ <b>109.75</b> Chan <b>34</b> (Y)	APP CRS <b>250°</b>	Rwy Idg <b>8000</b> TDZE <b>6540</b> Apt Elev <b>6547</b>
--	------------------------	---

# LDA RWY 25

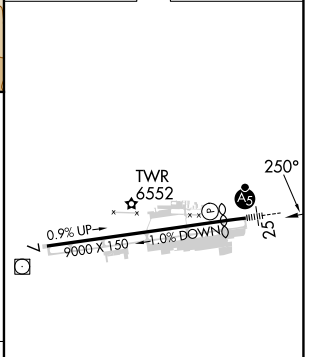
EAGLE COUNTY RGNL (EGE)

DME required. ▼ Inoperative table does not apply. ▲ At night increase LDA/GS visibility to 5 SM. ☼ -20°C *Fly visual to airport authorized during day only.	MALSR 	MISSED APPROACH: Climb direct SWX VOR/DME, cross SWX VOR/DME, then climbing right turn to 14600 on SWX VOR/DME R-001 to JESIE SWX 24.2 DME and hold, continue climb-in-hold to 14600. *Missed approach requires minimum climb of 275 feet per NM to 11700.
--	-----------	--

ATIS <b>135.575</b>	DENVER CENTER <b>128.65 282.2</b>	EAGLE TOWER ★ <b>119.8</b> (CTAF)	GND CON <b>121.8</b>	CLNC DEL <b>124.75</b>	DENVER CLNC DEL <b>124.75</b> (When tower closed)
------------------------	--------------------------------------	--------------------------------------	-------------------------	---------------------------	---



ELEV 6547		TDZE 6540
-----------	--	-----------



CATEGORY	A	B	C	D
S-LDA/GS 25*	8330-3	1790 (1800-3)		NA
S-LDA 25	8620-2½	2080 (2100-2½)	8620-3 2080 (2100-3)	NA

HIRL Rwy 7-25

REIL Rwy 7

SW-1, 30 NOV 2023 to 28 DEC 2023

SW-1, 30 NOV 2023 to 28 DEC 2023

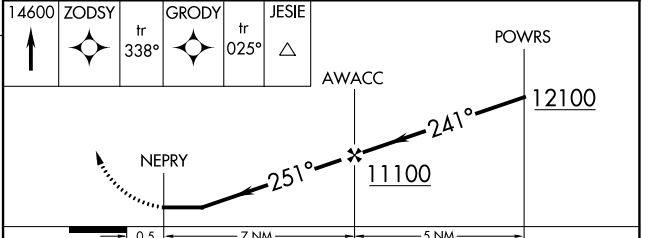
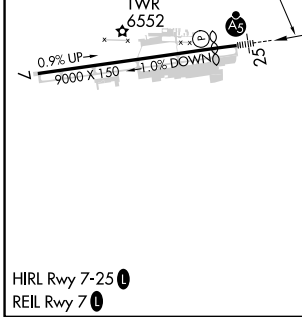
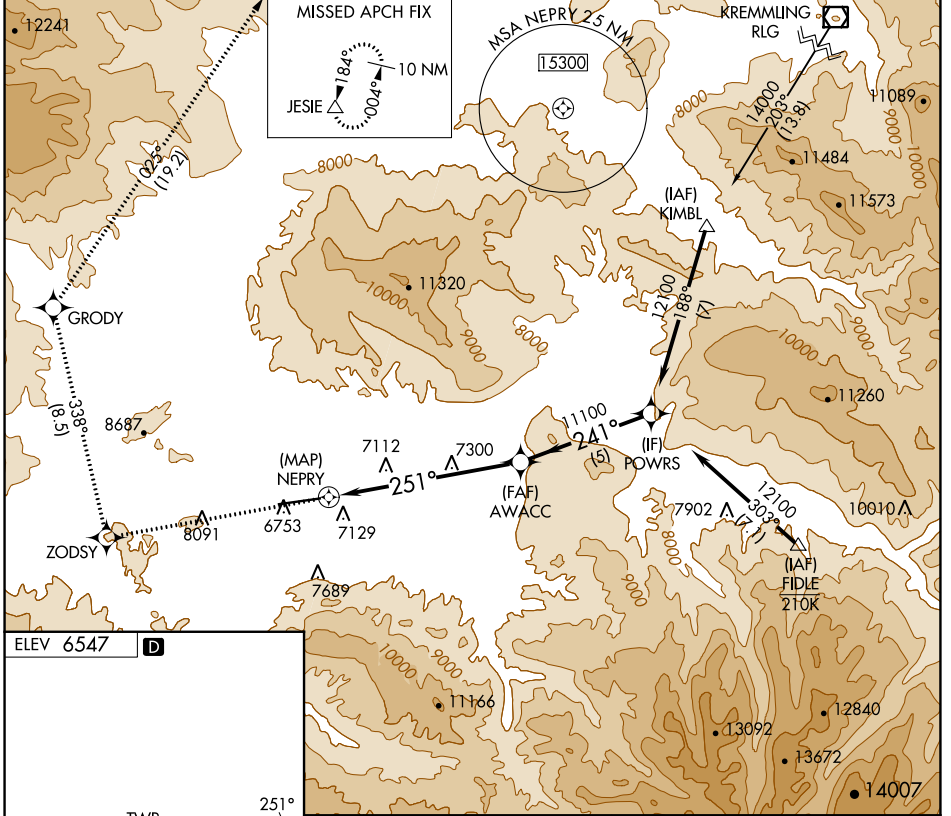
APP CRS <b>251°</b>	Rwy Idg TDZE Apt Elev	<b>N/A</b> <b>N/A</b> <b>6547</b>
------------------------	-----------------------------	---

# RNAV (GPS)-D

EAGLE COUNTY RGNL (EGE)

RNP APCH.		MISSED APPROACH: (Do not exceed 185K until GRODY) Climb to 14600 direct ZODSY then on track 338° to GRODY and on track 025° to JESIE and hold, continue climb in-hold to 14600.	
<p>⚠ Circling to Rwy 7 NA at night. Circling NA for Cats C and D south of Rwy 7-25. Rwy 7 helicopter visibility reduction below 1 SM NA. Rwy 25 helicopter visibility reduction below ¾ SM NA. Inoperative table does not apply.</p>			

ATIS <b>135.575</b>	DENVER CENTER <b>128.65 282.2</b>	EAGLE TOWER * <b>119.8 (CTAF)</b>	GND CON <b>121.8</b>	CLNC DEL <b>124.75</b>	DENVER CLNC DEL <b>124.75</b> (When tower closed)
------------------------	--------------------------------------	--------------------------------------	-------------------------	---------------------------	---



CATEGORY	A	B	C	D
<b>C</b> CIRCLING	9220-1¼ 2673 (2700-1¼)	9220-1½ 2673 (2700-1½)	9220-3	2673 (2700-3)

SW-1, 30 NOV 2023 to 28 DEC 2023

SW-1, 30 NOV 2023 to 28 DEC 2023