

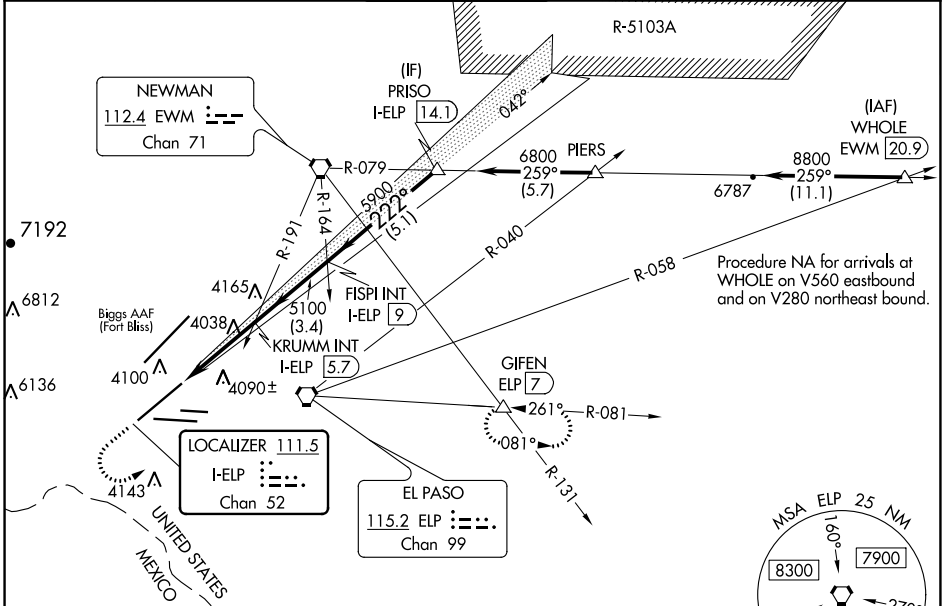
LOC/DME I-ELP 111.5 Chan 52	APP CRS 222°	Rwy Idg TDZE Apt Elev	12020 3950 3962
---	------------------------	-----------------------------	--

ILS or LOC RWY 22

EL PASO INTL (ELP)

RADAR required when R-5103 in use.		MALSR 	MISSED APPROACH: Climb to 4600 then climbing left turn to 8000 on heading 050° and on ELP VORTAC R-081 to GIFEN INT/ELP 7 DME and hold, continue climb-in-hold to 8000.
Circling NA for Cat D and E north of Rwy 26R and northwest of Rwy 4. For inop ALS, increase S-ILS 22 Cat E visibility to RVR 4000, S-LOC 22 ASR Cats C/D/E to RVR 5500.			

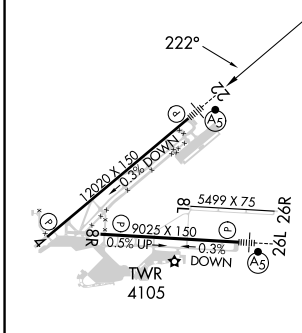
D-ATIS 120.0 254.3	EL PASO APP CON 124.25 298.85	EL PASO TOWER 118.3 239.275	GND CON 121.9 348.6	CLNC DEL 125.0 379.1
------------------------------	---	---------------------------------------	-------------------------------	--------------------------------



SC-3, 22 FEB 2024 to 21 MAR 2024

SC-3, 22 FEB 2024 to 21 MAR 2024

ELEV 3962	D	TDZE 3950
-----------	----------	-----------



MIRL Rwy 8L-26R	REIL Rwys 4 and 8R	HIRL Rwys 4-22 and 8R-26L	FAF to MAP 3.4 NM		
Knots	60	90	120	150	180
Min:Sec	3:24	2:16	1:42	1:22	1:08

4600	8000	ELP R-081	GIFEN	VGSI and ILS glidepath not coincident (VGSI Angle 3.00/TCH 70).
↑	hdg 050°		△	
Use I-ELP DME when on the localizer course.		KRUMM INT I-ELP [5.7]	FISPI INT I-ELP [9]	PRISO I-ELP [14.1]
I-ELP [2.2]	I-ELP [3.1]	5100	5900	6800
0.9	2.6 NM	3.4 NM	5.1 NM	GS 3.00° TCH 55

CATEGORY	A	B	C	D	E
S-ILS 22	4150/24 200 (200-½)				
S-LOC 22	4300/24	350 (400-½)	4300/30 350 (400-¾)		
C CIRCLING	4420-1 458 (500-1)	4440-1 478 (500-1)	4480-1½ 518 (600-1½)	4680-2¼ 718 (800-2¼)	4700-2½ 738 (800-2½)

LOC/DME I-ETF 111.5 Chan 52	APP CRS 042°	Rwy Idg 12020 TDZE 3923 Apt Elev 3962
---	------------------------	--

LOC/DME RWY 4

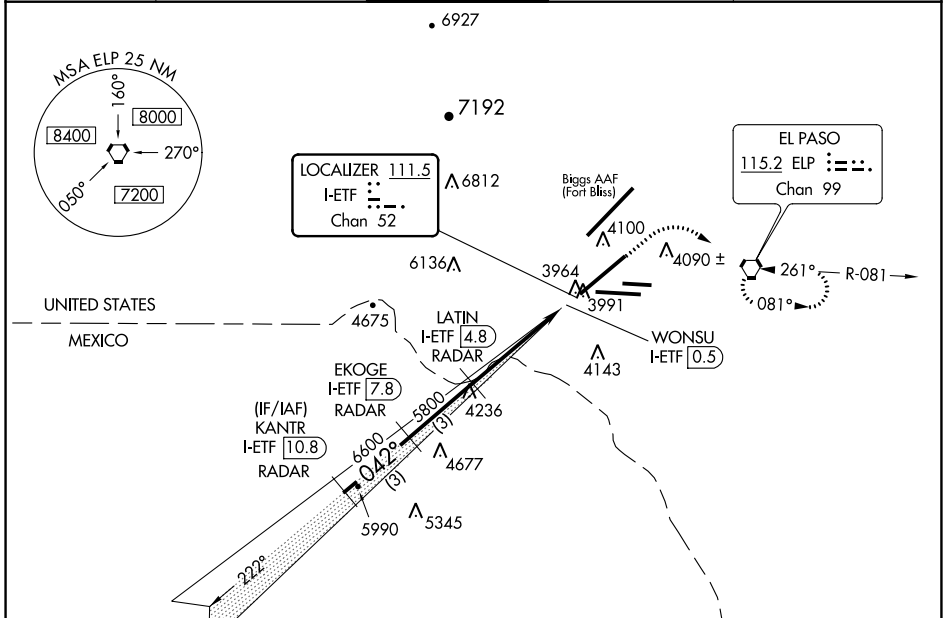
EL PASO INTL (ELP)

RADAR required for procedure entry.

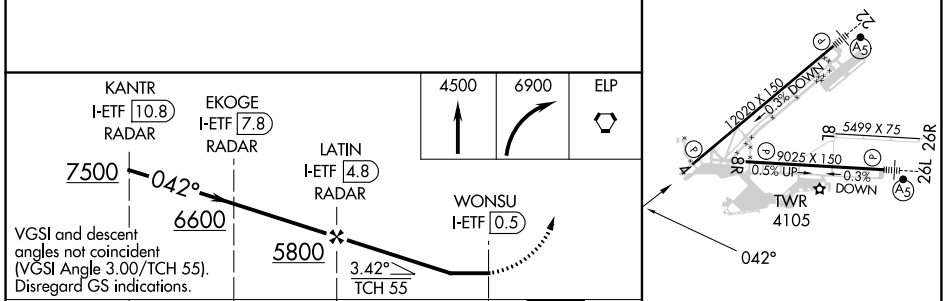
ASR Circling NA for Cat D north of Rwy 26R and northwest of Rwy 4.

MISSED APPROACH: Climb to 4500 then climbing right turn to 6900 direct ELP VORTAC and hold, continue climb-in-hold to 6900.

D-ATIS 120.0 254.3	EL PASO APP CON 124.25 296.85	EL PASO TOWER 118.3 239.275	GND CON 121.9 348.6	CLNC DEL 125.0 379.1
------------------------------	---	---------------------------------------	-------------------------------	--------------------------------



ELEV 3962	D TDZE 3923
-----------	--------------------



CATEGORY	A	B	C	D
	S-4	4300/50	377 (400-1)	4300/60 377 (400-1¼)
C CIRCLING	4420-1 458 (500-1)	4460-1 498 (500-1)	4480-1½ 518 (600-1½)	4680-2¼ 718 (800-2¼)

MIRL Rwy 8L-26R
REIL Rwy 4 and 8R
HIRL Rwy 4-22 and 8R-26L

SC-3, 22 FEB 2024 to 21 MAR 2024

SC-3, 22 FEB 2024 to 21 MAR 2024

APP CRS	Rwy Idg	5499
265°	TDZE	3950
	Apt Elev	3962

RNAV (GPS) RWY 26R

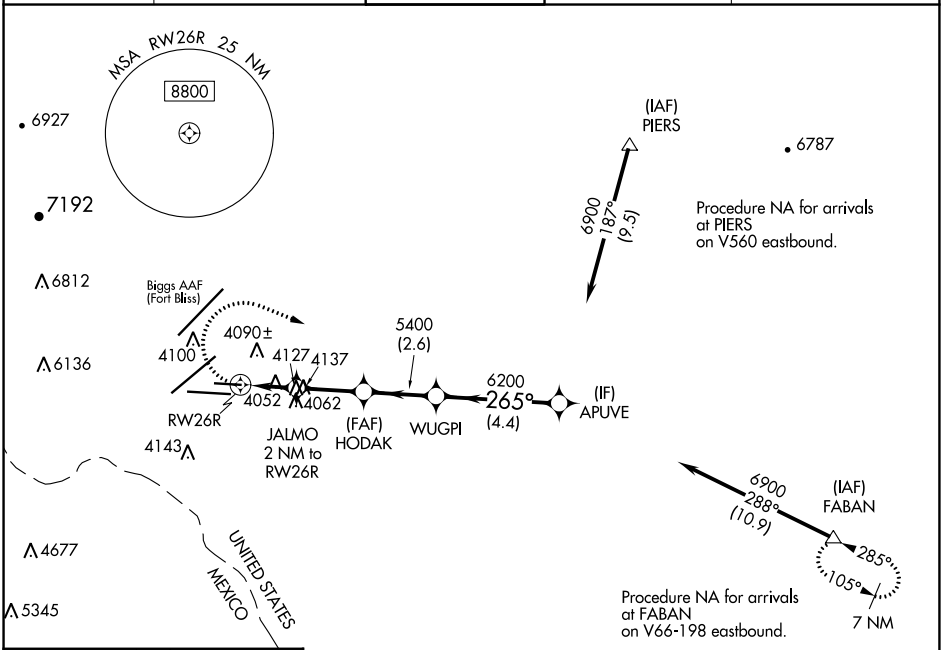
EL PASO INTL (ELP)

RNP APCH-GPS.

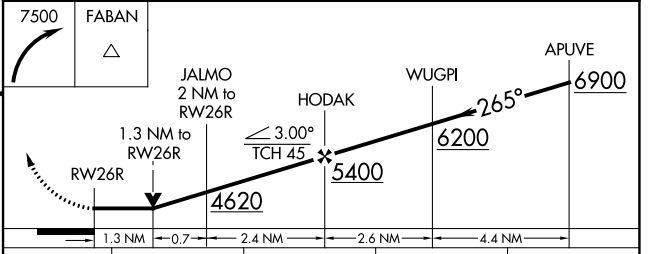
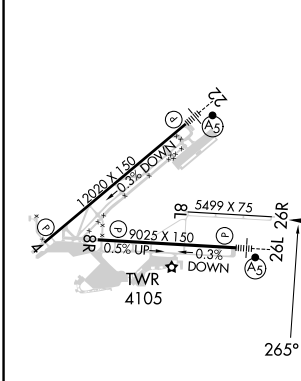
ASR Circling NA for Cat D north of Rwy 26R and northwest of Rwy 4. Rwy 26R helicopter visibility reduction below ¼ SM NA.

MISSED APPROACH: Climbing right turn 7500 direct FABAN and hold.

D-ATIS	EL PASO APP CON	EL PASO TOWER	GND CON	CLNC DEL
120.0 254.3	124.25 298.85	118.3 239.275	121.9 348.6	125.0 379.1



ELEV 3962	D	TDZE 3950
-----------	----------	-----------



CATEGORY	A	B	C	D
LNAV MDA	4400-1	450 (500-1)	4400-1 3/8	450 (500-1 3/8)
C CIRCLING	4420-1 458 (500-1)	4440-1 478 (500-1)	4480-1 1/2 518 (600-1 1/2)	4680-2 1/4 718 (800-2 1/4)

MIRL Rwy 8L-26R
REIL Rwys 4 and 8R
HIRL Rwys 4-22 and 8R-26L

SC-3, 22 FEB 2024 to 21 MAR 2024

SC-3, 22 FEB 2024 to 21 MAR 2024

APP CRS 085°	Rwy Idg 9025
	TDZE 3940
	Apt Elev 3962

RNAV (RNP) X RWY 8R

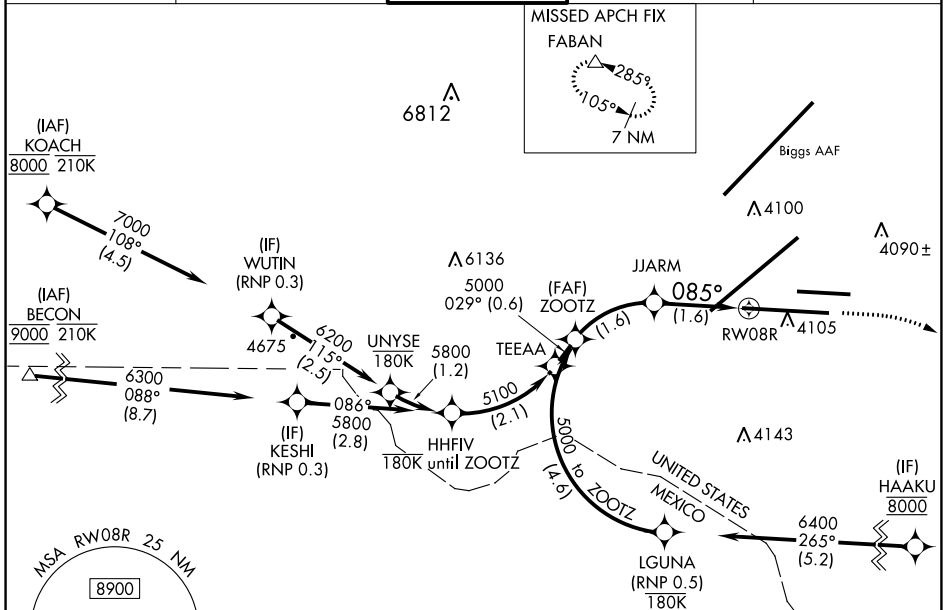
EL PASO INTL (ELP)

RNP AR APCH.
RF required.

ASR For uncompensated Baro-VNAV systems, procedure NA below -5°C or above 54°C.

MISSED APPROACH: Climb to 4400 then climbing right turn to 7500 direct FABAN and hold.

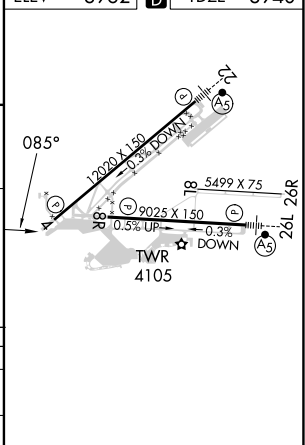
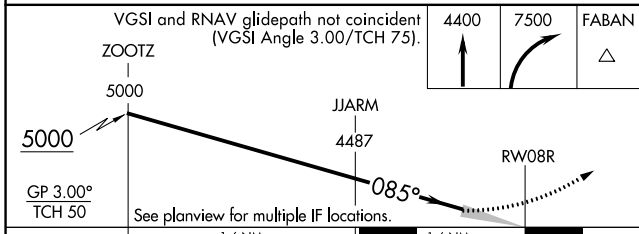
D-ATIS 120.0 254.3	EL PASO APP CON 124.25 298.85	EL PASO TOWER 118.3 239.275	GND CON 121.9 348.6	CLNC DEL 125.0 379.1
------------------------------	---	---------------------------------------	-------------------------------	--------------------------------



SC-3, 22 FEB 2024 to 21 MAR 2024

SC-3, 22 FEB 2024 to 21 MAR 2024

ELEV	3962	TDZE	3940
------	------	------	------



CATEGORY	A	B	C	D
RNP 0.20 DA		4193- ³ / ₄	253 (300- ³ / ₄)	
RNP 0.30 DA		4234- ⁷ / ₈	294 (300- ⁷ / ₈)	

AUTHORIZATION REQUIRED

MIRL Rwy 8L-26R
HIRL Rwy 4-22 and 8R-26L
REIL Rwy 4 and 8R

APP CRS	Rwy Idg	12020
042°	TDZE	3923
	Apt Elev	3962

RNAV (RNP) Y RWY 4

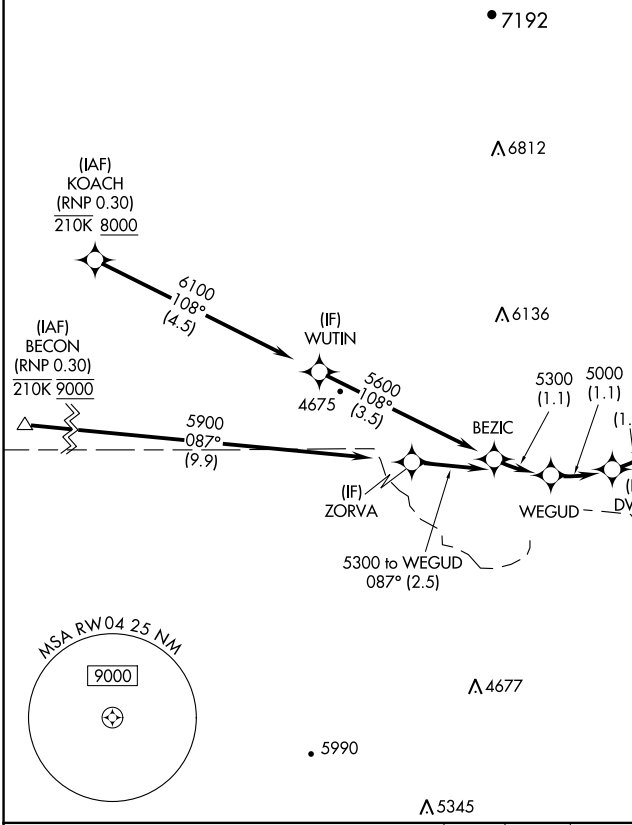
EL PASO INTL (ELP)

RNP AR APCH. RF required.

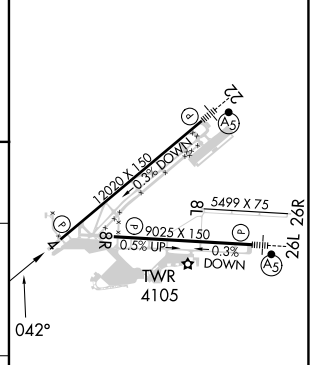
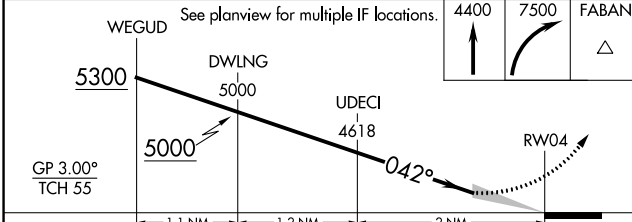
▼ For uncompensated Baro-VNAV systems, procedure NA below -22°C or above 54°C.

MISSED APPROACH: Climb to 4400 then climbing right turn to 7500 direct FABAN and hold.

D-ATIS	EL PASO APP CON	EL PASO TOWER	GND CON	CLNC DEL
120.0 254.3	124.25 298.85	118.3 239.275	121.9 348.6	125.0 379.1



ELEV	3962	TDZE	3923
------	-------------	------	-------------



CATEGORY	A	B	C	D
RNP 0.20 DA		4271/55	348 (400-1)	
RNP 0.30 DA		4340/60	417 (400-1½)	

AUTHORIZATION REQUIRED

MIRL Rwy 8L-26R
 REIL Rwy 4 and 8R
 HIRL Rwy 4-22 and 8R-26L

SC-3, 22 FEB 2024 to 21 MAR 2024

SC-3, 22 FEB 2024 to 21 MAR 2024

APP CRS	Rwy Idg	9025
085°	TDZE	3940
	Apt Elev	3962

RNAV (RNP) Y RWY 8R

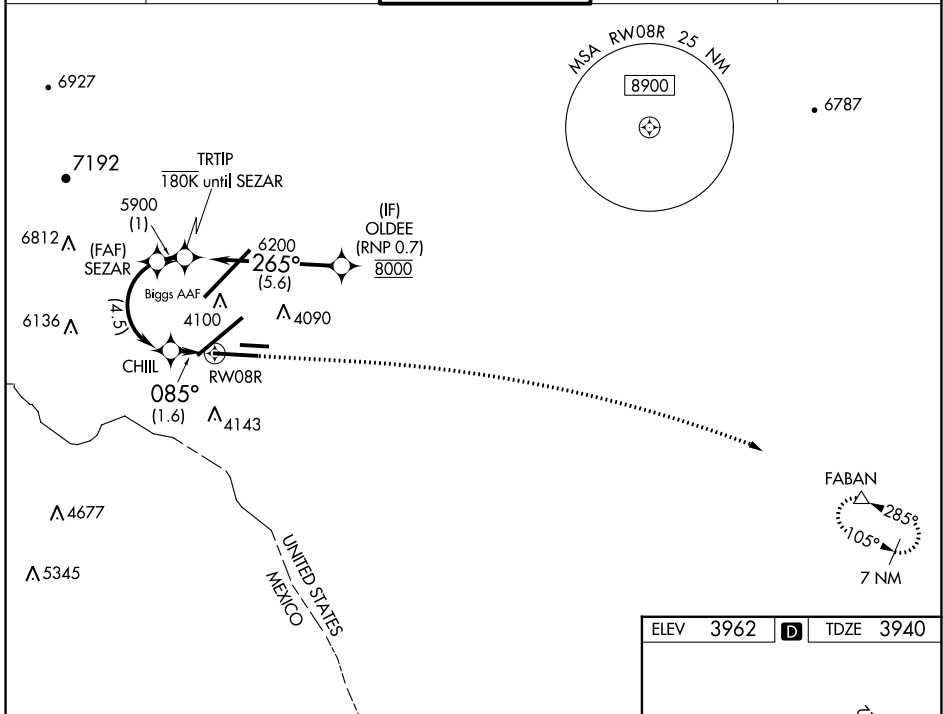
EL PASO INTL (ELP)

RNP AR APCH.
RF required.

T For uncompensated Baro-VNAV systems, procedure NA below -5°C or above 54°C.

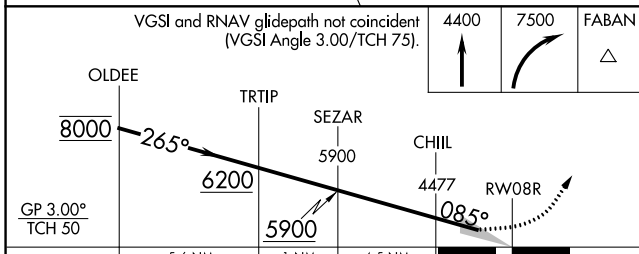
MISSED APPROACH: Climb to 4400 then climbing right turn to 7500 direct FABAN and hold.

D-ATIS 120.0 254.3	EL PASO APP CON 124.25 298.85	EL PASO TOWER 118.3 239.275	GND CON 121.9 348.6	CLNC DEL 125.0 379.1
------------------------------	---	---------------------------------------	-------------------------------	--------------------------------

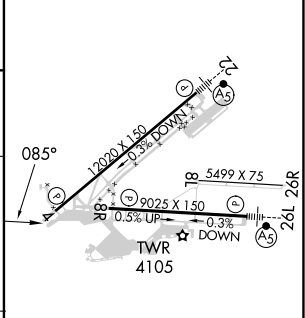


SC-3, 22 FEB 2024 to 21 MAR 2024

SC-3, 22 FEB 2024 to 21 MAR 2024



ELEV	3962	D	TDZE	3940
------	------	----------	------	------



	5.6 NM	1 NM	4.5 NM	1.6 NM
CATEGORY	A	B	C	D
RNP 0.20 DA		4193- ³ / ₄	253 (300- ³ / ₄)	
RNP 0.30 DA		4234- ⁷ / ₈	294 (300- ⁷ / ₈)	
AUTHORIZATION REQUIRED				

MIRL Rwy 8L-26R
HIRL Rwy 4-22 and 8R-26L
REIL Rwy 4 and 8R

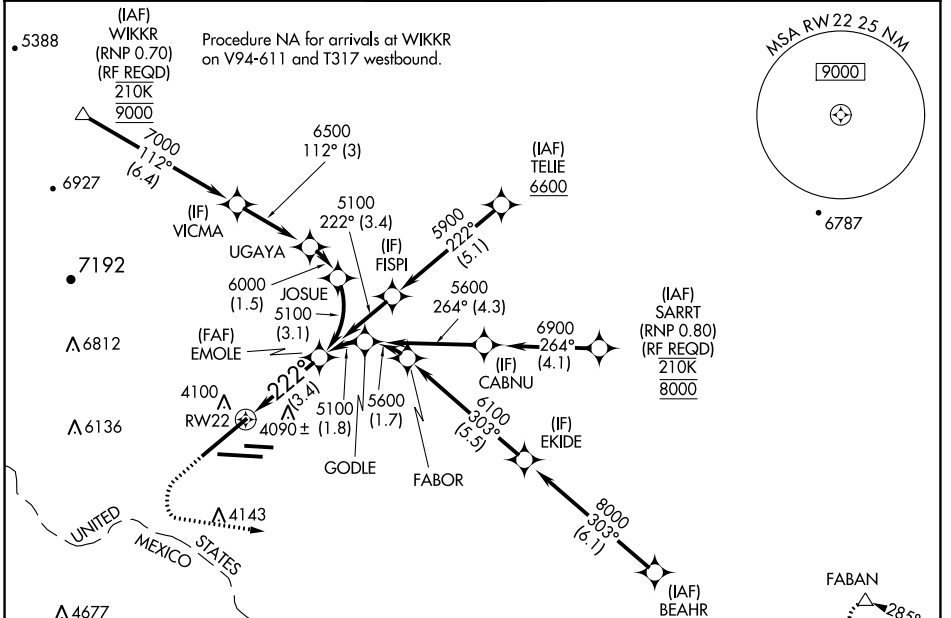
APP CRS	Rwy Idg	12020
222°	TDZE	3950
	Apt Elev	3962

RNAV (RNP) Z RWY 22

EL PASO INTL (ELP)

RNP AR APCH.	MALSR	MISSED APPROACH: Climb to 4400 then climbing left turn to 7500 direct FABAN and hold.
▼ For uncompensated Baro-VNAV systems, procedure NA below -8°C ASR or above 54°C. For inop ALS, increase RNP 0.10 all Cats visibility to RVR 4000 and RNP 0.30 all Cats visibility to RVR 4500.		

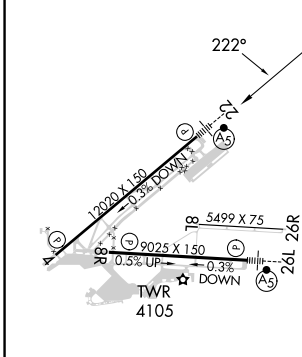
D-ATIS	EL PASO APP CON	EL PASO TOWER	GND CON	CLNC DEL
120.0 254.3	124.25 298.85	118.3 239.275	121.9 348.6	125.0 379.1



SC-3, 22 FEB 2024 to 21 MAR 2024

SC-3, 22 FEB 2024 to 21 MAR 2024

ELEV	3962	D	TDZE	3950
------	-------------	----------	------	-------------



4400	7500	FABAN	EMOLE
		△	5100

VGSi and RNAV glidepath not coincident (VGSi Angle 3.00/TCH 70).

RW22

See planview for multiple IF locations.

3.4 NM

GP 3.00° TCH 55

CATEGORY	A	B	C	D
RNP 0.10 DA		4200/24	250 (300-½)	
RNP 0.30 DA		4270/27	320 (400-⅝)	

MIRL Rwy 8L-26R
REIL Rws 4 and 8R
HIRL Rws 4-22 and 8R-26L

AUTHORIZATION REQUIRED

RNAV (RNP) Z RWY 26L

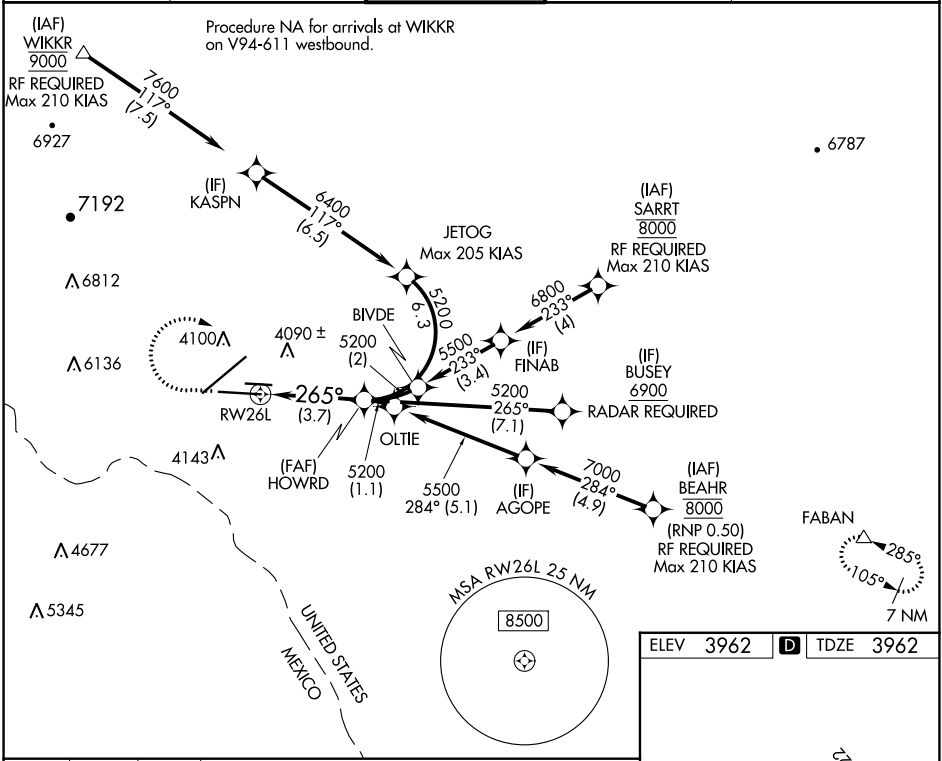
EL PASO INTL (ELP)

APP CRS 265°	Rwy Idg 9025
	TDZE 3962
	Apt Elev 3962

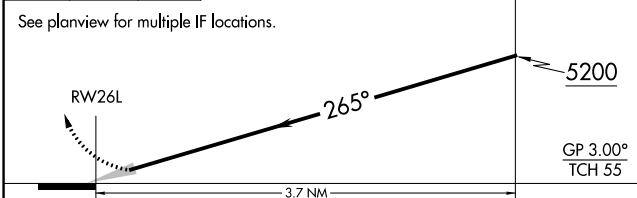
ASR For uncompensated Baro-VNAV systems, procedure NA below -8°C (18°F) or above 50°C (122°F). For inop MALSRS, increase RNP 0.30 visibility all Cats to 1 mile. GPS Required.

MALSRS MISSED APPROACH: Climb to 4400, then climbing right turn to 7500 direct FABAN and hold.

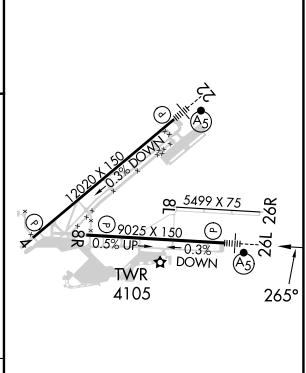
D-ATIS 120.0 254.3	EL PASO APP CON 124.25 298.85	EL PASO TOWER 118.3 239.275	GND CON 121.9 348.6	CLNC DEL 125.0 379.1
------------------------------	---	--	-------------------------------	--------------------------------



4400 7500 FABAN
 ↑ ↘ △
 VGSI and glidepath not coincident (VGSI Angle 3.00/TCH 75).



ELEV 3962	D TDZE 3962
-----------	--------------------



CATEGORY	A	B	C	D
RNP 0.30 DA		4275-1/2	313 (400-1/2)	

AUTHORIZATION REQUIRED

MIRL Rwy 8L-26R
 REIL Rwy 4 and 8R
 HIRL Rwy 4-22 and 8R-26L

SC-3, 22 FEB 2024 to 21 MAR 2024

SC-3, 22 FEB 2024 to 21 MAR 2024

APP CRS	Rwy Idg	12020
042°	TDZE	3923
	Apt Elev	3962

RNAV (RNP) Z RWY 4

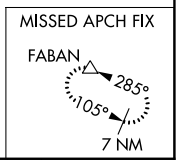
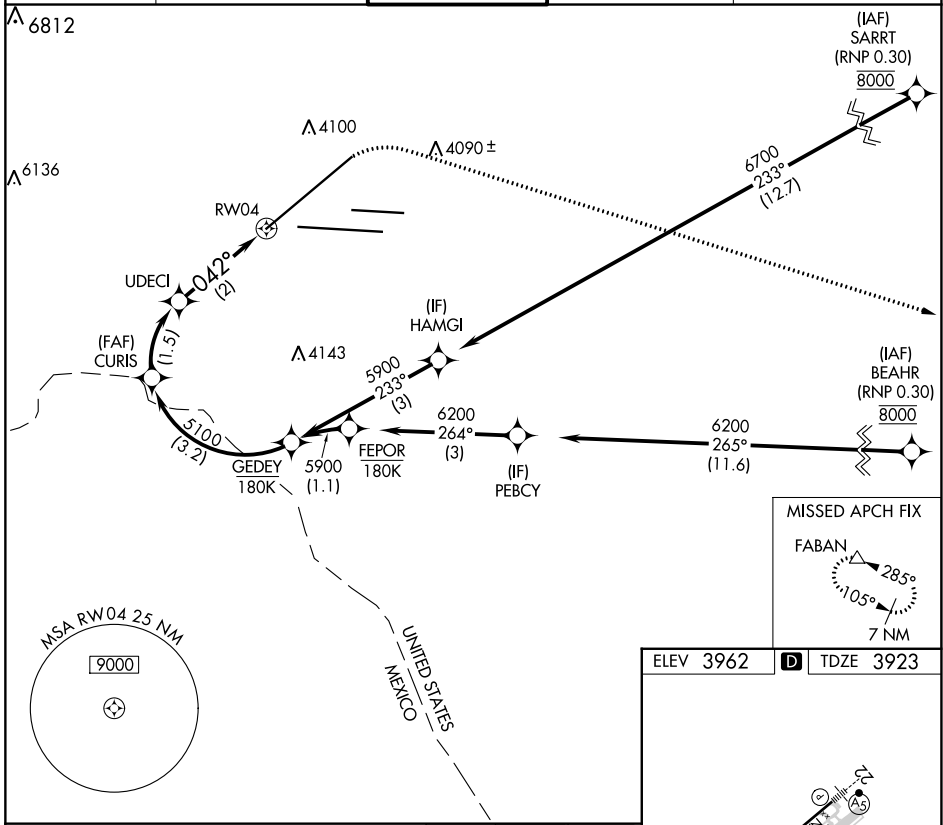
EL PASO INTL (ELP)

RNP AR APCH. RF required.

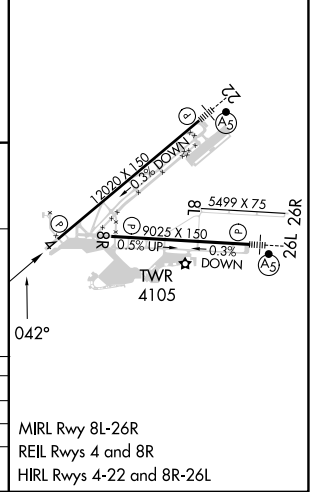
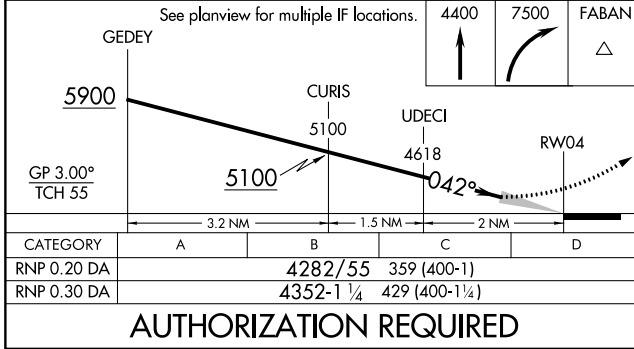
ASR For uncompensated Baro-VNAV systems, procedure NA below -5°C or above 54°C.

MISSED APPROACH: Climb to 4400 then climbing right turn to 7500 direct FABAN and hold.

D-ATIS	EL PASO APP CON	EL PASO TOWER	GND CON	CLNC DEL
120.0 254.3	124.25 298.85	118.3 239.275	121.9 348.6	125.0 379.1



ELEV 3962	D TDZE 3923
-----------	--------------------



AUTHORIZATION REQUIRED

SC-3, 22 FEB 2024 to 21 MAR 2024

SC-3, 22 FEB 2024 to 21 MAR 2024

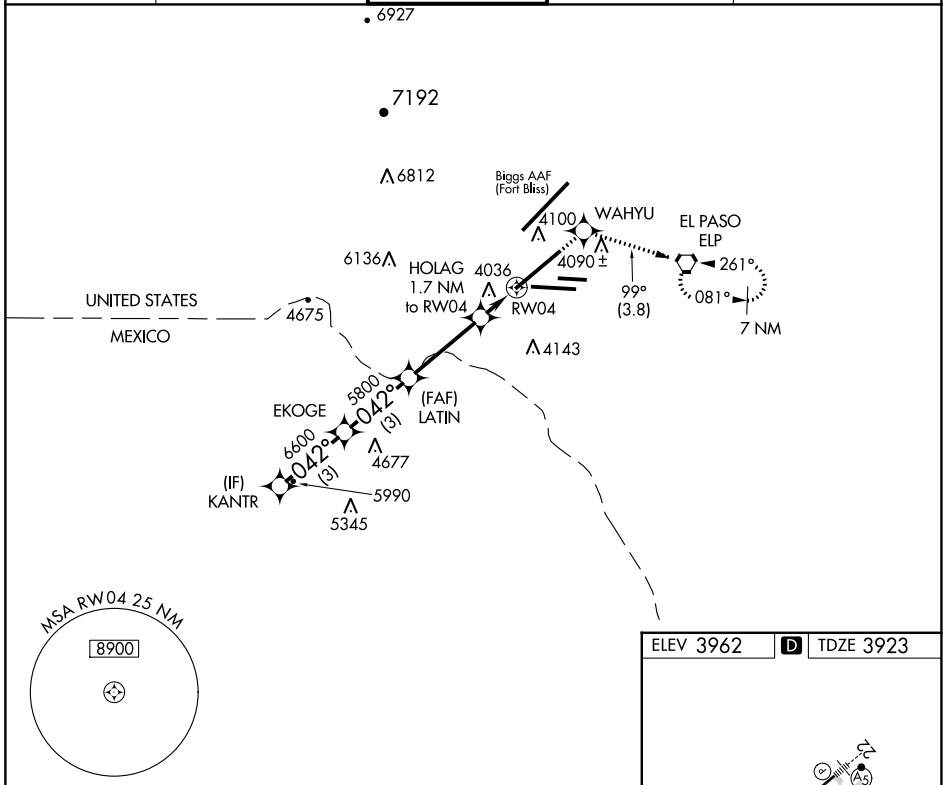
RNAV (GPS) X RWY 4

EL PASO INTL (ELP)

APP CRS 042°	Rwy Idg TDZE Apt Elev	12020 3923 3962
------------------------	-----------------------------	--

RNP APCH-GPS.	MISSED APPROACH: Climb to 6900 direct WAHYU and on track 099° to ELP VORTAC and hold, continue climb-in-hold to 6900.
<p>▼ Circling NA for Cat D north of Rwy 26R and northwest of Rwy 4.</p> <p>▲ ASR</p>	

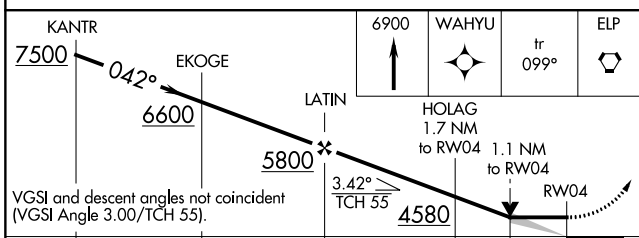
D-ATIS 120.0 254.3	EL PASO APP CON 124.25 298.85	EL PASO TOWER 118.3 239.275	GND CON 121.9 348.6	CLNC DEL 125.0 379.1
------------------------------	---	---------------------------------------	-------------------------------	--------------------------------



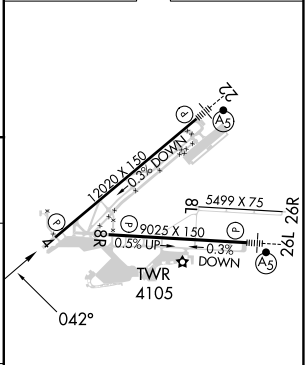
SC-3, 22 FEB 2024 to 21 MAR 2024

SC-3, 22 FEB 2024 to 21 MAR 2024

ELEV 3962	D TDZE 3923
-----------	--------------------



CATEGORY	A	B	C	D
LNVA MDA	4320/55	397 (400-1)	4320/60	397 (400-1½)
C CIRCLING	4420-1 458 (500-1)	4460-1 498 (500-1)	4480-1½ 518 (600-1½)	4680-2¼ 718 (800-2¼)



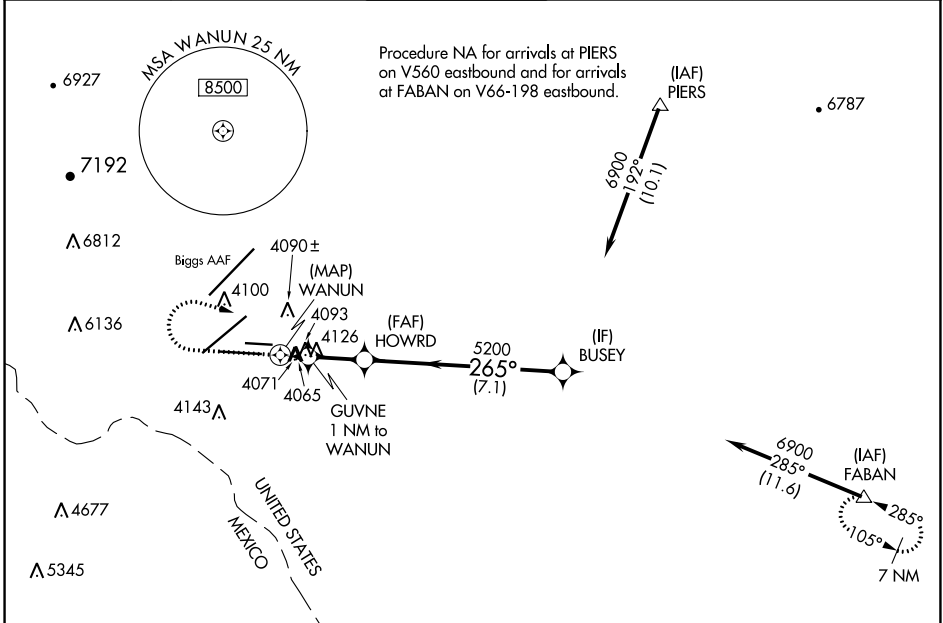
MIRL Rwy 8L-26R
REIL Rws 4 and 8R
HIRL Rws 4-22 and 8R-26L

WAAS CH 40223	APP CRS 265°	Rwy Idg TDZE Apt Elev	9025 3962 3962
W26A			

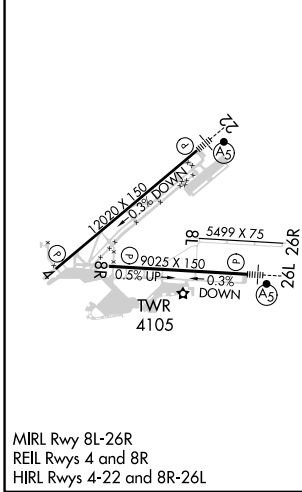
RNAV (GPS) Y RWY 26L

EL PASO INTL (ELP)

RNP APCH-GPS.		MALSR	MISSED APPROACH: Climb to 4380 then climbing right turn to 7500 direct FABAN and hold.	
<p>⚠ Circling NA for Cat D west of Rwy 4-22. For inop ALS, increase LP and LNAV Cat A/B visibility to 1 SM, and Cat C/D to 1½ SM.</p>				
D-ATIS 120.0 254.3	EL PASO APP CON 124.25 298.85	EL PASO TOWER 118.3 239.275	GND CON 121.9 348.6	CLNC DEL 125.0 379.1



ELEV 3962	D	TDZE 3962
-----------	----------	-----------



4380	7500	FABAN	VGSI and descent angles not coincident (VGSI Angle 3.00/TCH 75).		
CATEGORY		A	B	C	D
LP	MDA	4380-¾		418 (500-¾)	
LNAV	MDA	4380-¾		418 (500-¾)	
C CIRCLING		4420-1	4440-1	4480-1½	4680-2¼
		458 (500-1)	478 (500-1)	518 (600-1½)	718 (800-2¼)

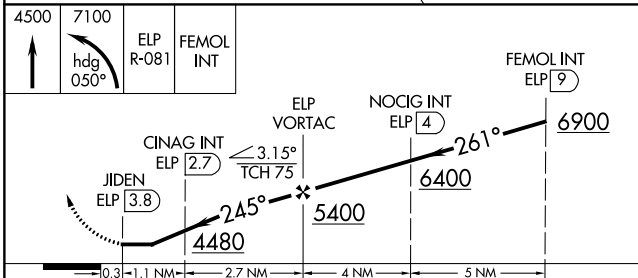
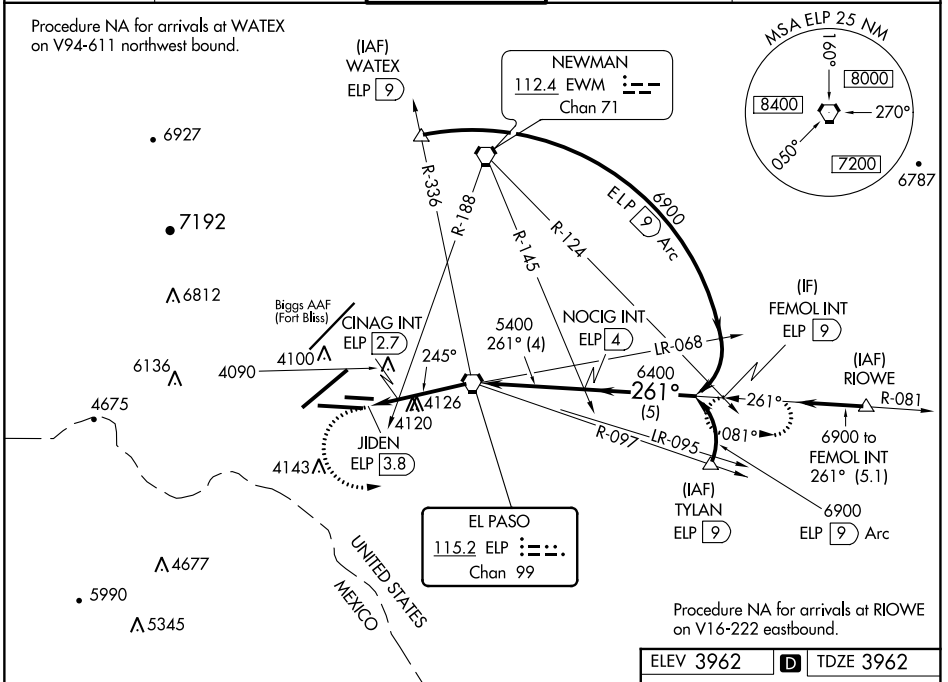
VORTAC ELP 115.2 Chan 99	APP CRS 245°	Rwy Idg TDZE 3962 Apt Elev 3962
--	------------------------	---

VOR RWY 26L

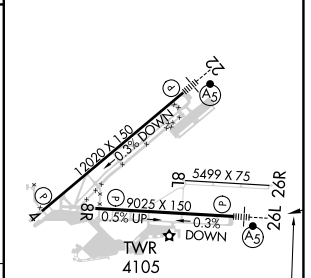
EL PASO INTL (ELP)

ASR Inop table does not apply to S-26L and CINAG fix minimums S-26L. Circling NA for Cat D northwest of Rwy 4-22.	MALSR 	MISSED APPROACH: Climb to 4500 then climbing left turn to 7100 on heading 050° and on ELP VORTAC R-081 to FEMOL INT/9 DME and hold.
---	------------------	--

D-ATIS 120.0 254.3	EL PASO APP CON 124.25 298.85	EL PASO TOWER 118.3 239.275	GND CON 121.9 348.6	CLNC DEL 125.0 379.1
------------------------------	---	---------------------------------------	-------------------------------	--------------------------------



ELEV 3962	D TDZE 3962
-----------	--------------------



CATEGORY	A	B	C	D	E
S-26L	4480-1 518 (600-1)		4480-1 ³ / ₈ 518 (600-1 ³ / ₈)		NA
C CIRCLING	4480-1 518 (600-1)		4480-1 ¹ / ₂ 518 (600-1 ¹ / ₂)	4680-2 718 (800-2)	NA
CINAG FIX MINIMUMS (DUAL VOR RECEIVERS OR DME REQUIRED)					
S-26L	4380-1 418 (500-1)	4480-1 ¹ / ₈ 418 (500-1 ¹ / ₈)			NA
C CIRCLING	4420-1 458 (500-1)	4440-1 478 (500-1)	4480-1 ¹ / ₂ 518 (600-1 ¹ / ₂)	4680-2 ¹ / ₄ 718 (800-2 ¹ / ₄)	NA

MRL Rwy 8L-26R REIL Rws 4 and 8R HIRL Rws 4-22 and 8R-26L					
FAF to MAP 3.8 NM					
Knots	60	90	120	150	180
Min:Sec	3:48	2:32	1:54	1:31	1:16

SC-3, 22 FEB 2024 to 21 MAR 2024

SC-3, 22 FEB 2024 to 21 MAR 2024