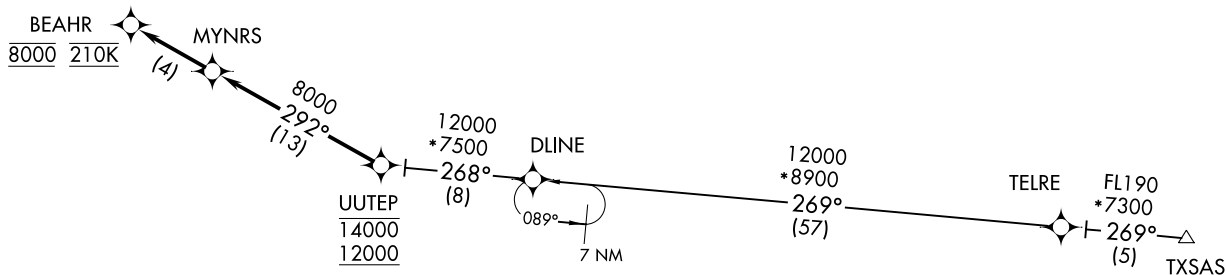


BEAHR THREE ARRIVAL (RNAV)  
(BEAHR.BEAHR3) 03APR14

(BEAHR.BEAHR3) 20030  
BEAHR THREE ARRIVAL (RNAV)

EL PASO D-ATIS  
120.0 254.3  
EL PASO APP CON  
124.25 298.85  
ALBUQUERQUE CENTER  
135.2 292.15

- NOTE: RADAR required.
- NOTE: RNAV 1.
- NOTE: DME/DME/IRU or GPS required.
- NOTE: Turbojet aircraft only.
- NOTE: Expect RNP approach or RADAR vectors to final approach course prior to BEAHR.



A1-134 (FAA)

EL PASO INTL (EILP)  
EL PASO, TEXAS

ARRIVAL ROUTE DESCRIPTION

TXSAS TRANSITION (TXSAS.BEAHR3)

From UUTEP on track 292° to MYNRS, then on track 292° to BEAHR, cross BEAHR at 8000 at 210K, expect RNAV (RNP) approach or RADAR vectors to final approach course.

NOTE: Chart not to scale.

EL PASO, TEXAS  
EL PASO INTL (EILP)

HSKNS ONE ARRIVAL (RNAV)  
(HSKNS.HSKNS1) 03APR14

(HSKNS.HSKNS1) 20030  
HSKNS ONE ARRIVAL (RNAV)

AL-134 (FAA)

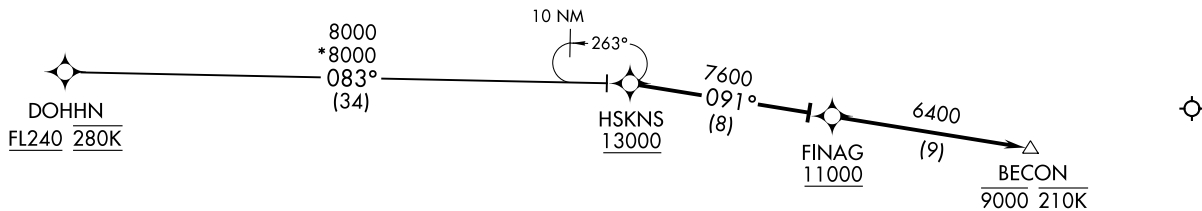
EL PASO INTL (EILP)  
EL PASO, TEXAS

ARRIVAL ROUTE DESCRIPTION

DOHHN TRANSITION (DOHHN.HSKNS1)

LANDING RWY 4: From HSKNS on track 091° to FINAG, cross FINAG at or above 11000, then on track 091° to BECON, cross BECON at 9000 at 210K, expect RNAV (RNP) approach or RADAR vectors to final approach course.

EL PASO D-ATIS  
120.0 254.3  
EL PASO APP CON  
124.25 298.85  
ALBUQUERQUE CENTER  
135.875 292.15



- NOTE: RADAR required.
- NOTE: RNAV 1.
- NOTE: DME/DME/IRU or GPS required.
- NOTE: Turbojet aircraft only.
- NOTE: For Non-RNP aircraft, expect RADAR vectors to final approach course.
- NOTE: Expect RNP approach clearance or RADAR vectors to final approach prior to BECON.

NOTE: Chart not to scale.

EL PASO, TEXAS  
EL PASO INTL (EILP)

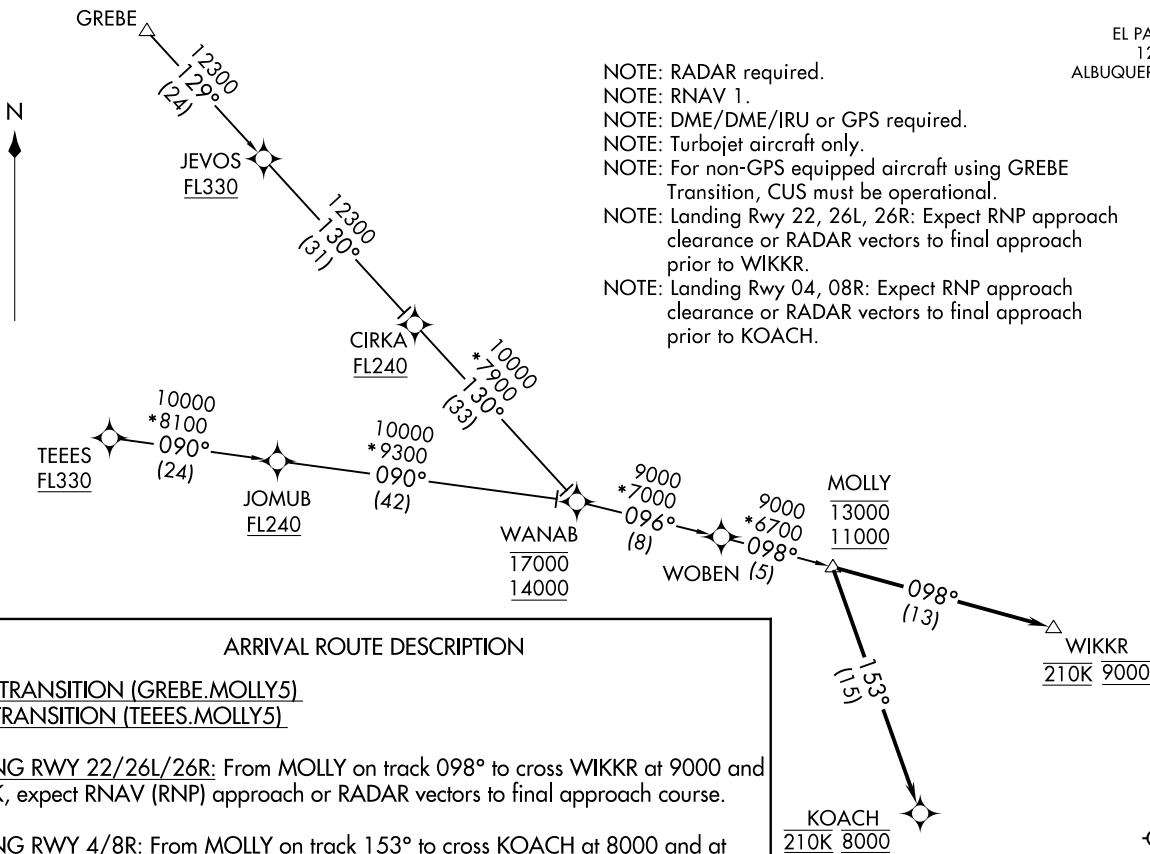
D-ATIS  
120.0 254.3  
EL PASO APP CON  
124.25 298.85  
ALBUQUERQUE CENTER  
128.2 285.5

(MOLLY.MOLLY5) 20310  
MOLLY FIVE ARRIVAL (RNAV)

AL-134 (FAA)

EL PASO INTL (EILP)  
EL PASO, TEXAS

- NOTE: RADAR required.
- NOTE: RNAV 1.
- NOTE: DME/DME/IRU or GPS required.
- NOTE: Turbojet aircraft only.
- NOTE: For non-GPS equipped aircraft using GREBE Transition, CUS must be operational.
- NOTE: Landing Rwy 22, 26L, 26R: Expect RNP approach clearance or RADAR vectors to final approach prior to WIKKR.
- NOTE: Landing Rwy 04, 08R: Expect RNP approach clearance or RADAR vectors to final approach prior to KOACH.



MOLLY FIVE ARRIVAL (RNAV)  
(MOLLY.MOLLY5) 05N0V20

EL PASO, TEXAS  
EL PASO INTL (EILP)

ARRIVAL ROUTE DESCRIPTION

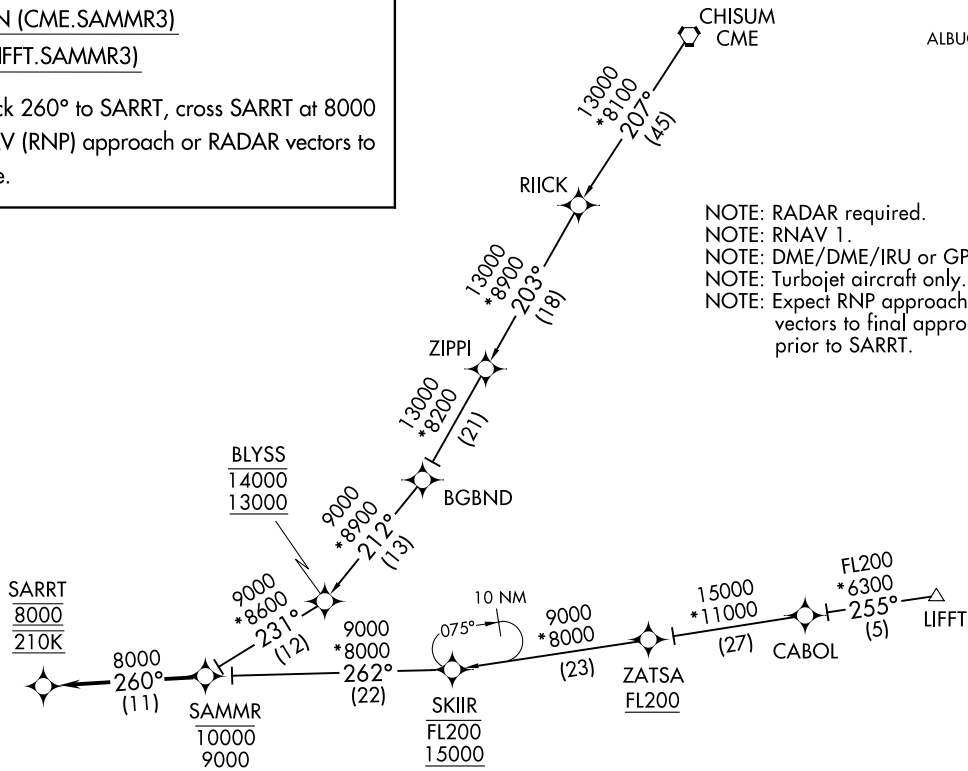
CHISUM TRANSITION (CME.SAMMR3)

LIFFT TRANSITION (LIFFT.SAMMR3)

From SAMMR on track 260° to SARRT, cross SARRT at 8000 at 210K, expect RNAV (RNP) approach or RADAR vectors to final approach course.

EL PASO D-ATIS  
120.0 254.3  
EL PASO APP CON  
124.25 298.85  
ALBUQUERQUE CENTER  
135.87 292.15

NOTE: RADAR required.  
NOTE: RNAV 1.  
NOTE: DME/DME/IRU or GPS required.  
NOTE: Turbojet aircraft only.  
NOTE: Expect RNP approach or radar vectors to final approach course prior to SARRT.



NOTE: Chart not to scale.

SAMMR THREE ARRIVAL (RNAV)  
(SAMMR.SAMMR3) 03APR14

EL PASO, TEXAS  
EL PASO INTL (EILP)

(SAMMR.SAMMR3) 20030  
SAMMR THREE ARRIVAL (RNAV)

EL PASO INTL (EILP)  
EL PASO, TEXAS

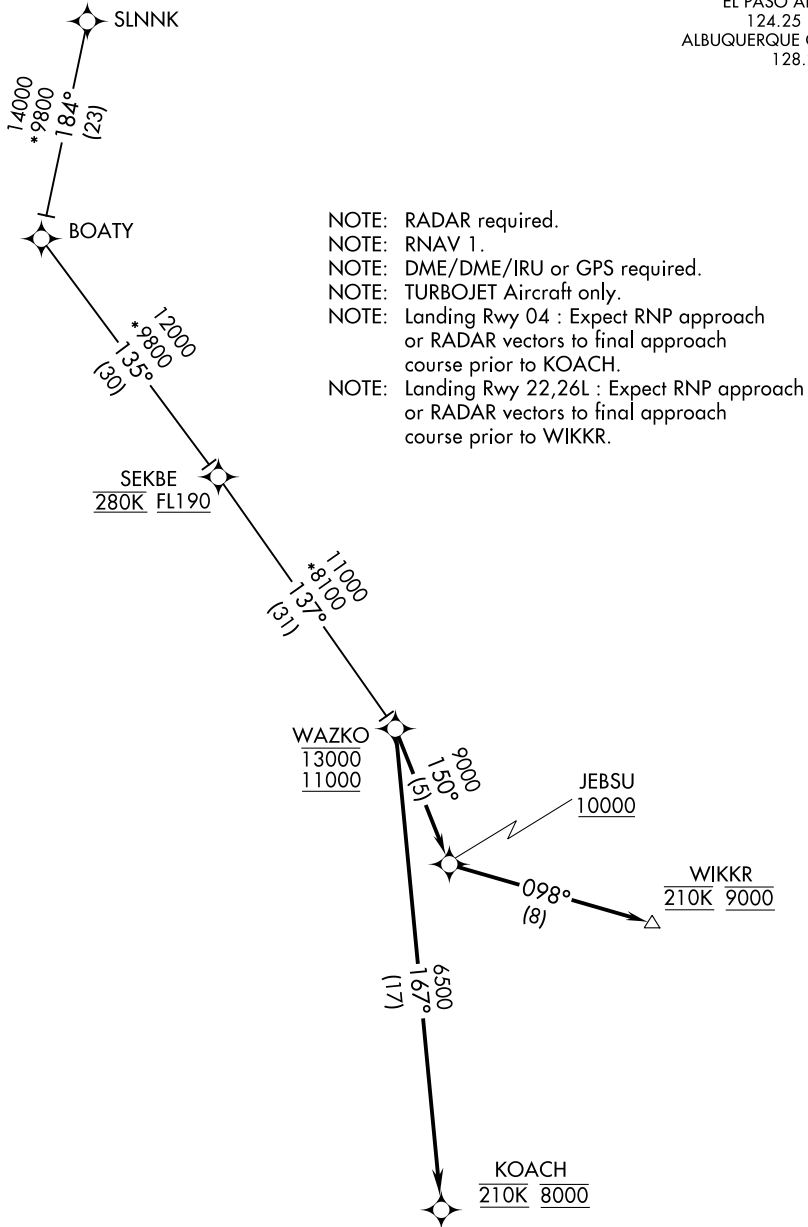
AL-134 (FAA)

(WAZKO.WAZKO1) 20030  
**WAZKO ONE ARRIVAL (RNAV)**

AL-134 (FAA)

**EL PASO INTL (ELP)**  
 EL PASO, TEXAS

EL PASO D-ATIS  
 120.0 254.3  
 EL PASO APP CON  
 124.25 298.85  
 ALBUQUERQUE CENTER  
 128.2 285.5



- NOTE: RADAR required.
- NOTE: RNAV 1.
- NOTE: DME/DME/IRU or GPS required.
- NOTE: TURBOJET Aircraft only.
- NOTE: Landing Rwy 04 : Expect RNP approach or RADAR vectors to final approach course prior to KOACH.
- NOTE: Landing Rwy 22,26L : Expect RNP approach or RADAR vectors to final approach course prior to WIKKR.

SC-3, 22 FEB 2024 to 21 MAR 2024

SC-3, 22 FEB 2024 to 21 MAR 2024

(NARRATIVE ON FOLLOWING PAGE)

NOTE: Chart not to scale.



**WAZKO ONE ARRIVAL (RNAV)**  
 (WAZKO.WAZKO1) 03APR14

EL PASO, TEXAS  
 EL PASO INTL (ELP)

ARRIVAL ROUTE DESCRIPTION

SLNNK TRANSITION (SLNNK.WAZKO1):

LANDING RWY 4: From WAZKO on track 167° to KOACH at 8000 and at 210K. Expect RNAV (RNP) approach or RADAR vectors to final approach course.

LANDING RWY 8R: From WAZKO on track 167° to KOACH at 8000 and at 210K. Expect RADAR vectors to final approach course.

LANDING RWY 22/26L: From WAZKO on track 150° to cross JEBSU at or above 10000, then on track 098° to cross WIKKR at 9000 and at 210K. Expect RNAV (RNP) approach or RADAR vectors to final approach course.

LANDING RWY 26R: From WAZKO on track 150° to cross JEBSU at or above 10000, then on track 098° to cross WIKKR at 9000 and at 210K. Expect RADAR vectors to final approach course.

SC-3, 22 FEB 2024 to 21 MAR 2024

SC-3, 22 FEB 2024 to 21 MAR 2024