

WAAS CH <b>97704</b> <b>W01A</b>	APP CRS <b>007°</b>	Rwy Idg <b>4999</b> TDZE <b>1208</b> Apt Elev <b>1208</b>
--	------------------------	---

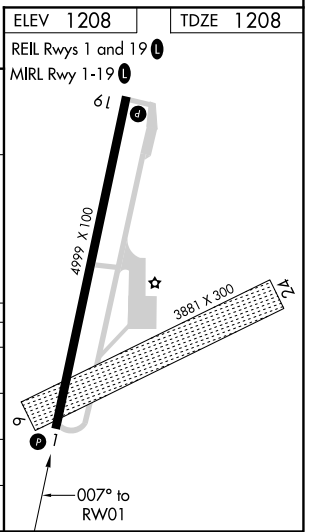
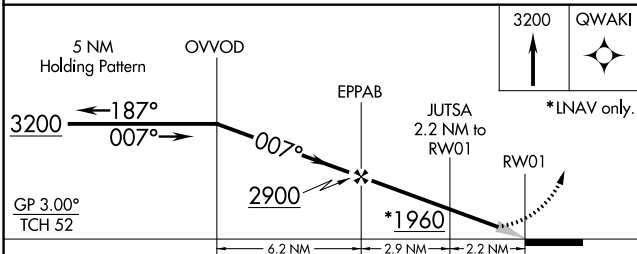
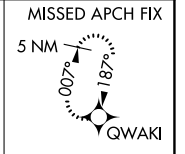
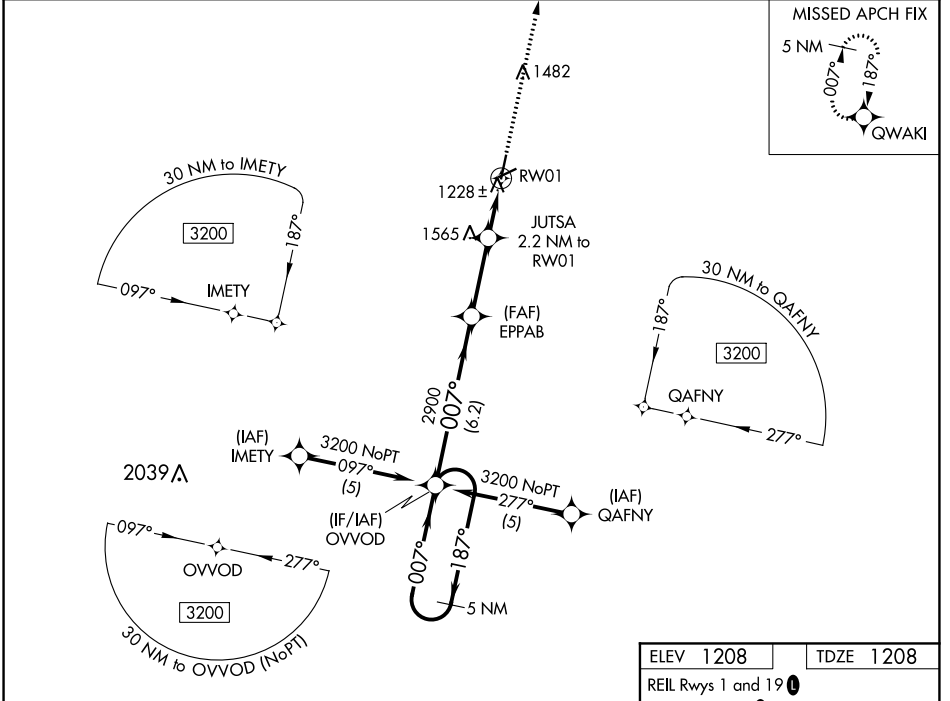
# RNAV (GPS) RWY 1

EMPORIA MUNI (EMP)

RNP APCH-GPS.  
 For uncompensated Baro-VNAV systems, LNAV/VNAV NA below -17°C or above 54°C. Circling NA to Rwys 6 and 24.

MISSED APPROACH: Climb to 3200 direct QWAKI and hold.

ASOS <b>126.125</b>	KANSAS CITY CENTER <b>127.725 270.25</b>	UNICOM <b>122.8 (CTAF) 1</b>
------------------------	---	---------------------------------



CATEGORY	A	B	C	D
LPV DA	1458-3/4	250 (300-3/4)		NA
LNAV/VNAV DA	1642-1 1/4	434 (500-1 1/4)		NA
LNAV MDA	1800-1	592 (600-1)	1800-1 3/4 592 (600-1 3/4)	NA
CIRCLING	1800-1	592 (600-1)	1880-2 672 (700-2)	NA

NC-2, 02 DEC 2021 to 30 DEC 2021

NC-2, 02 DEC 2021 to 30 DEC 2021

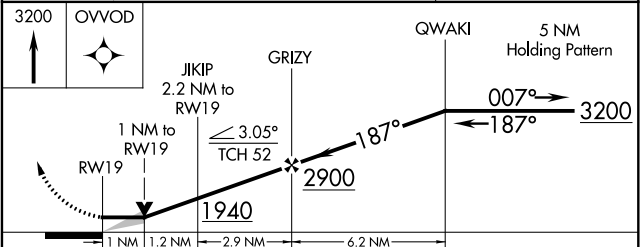
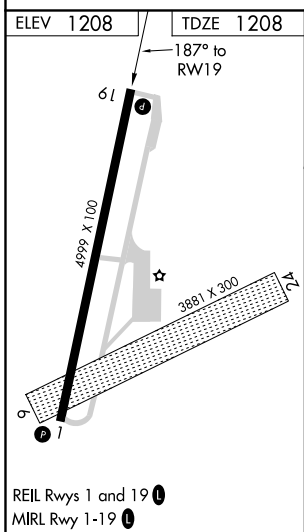
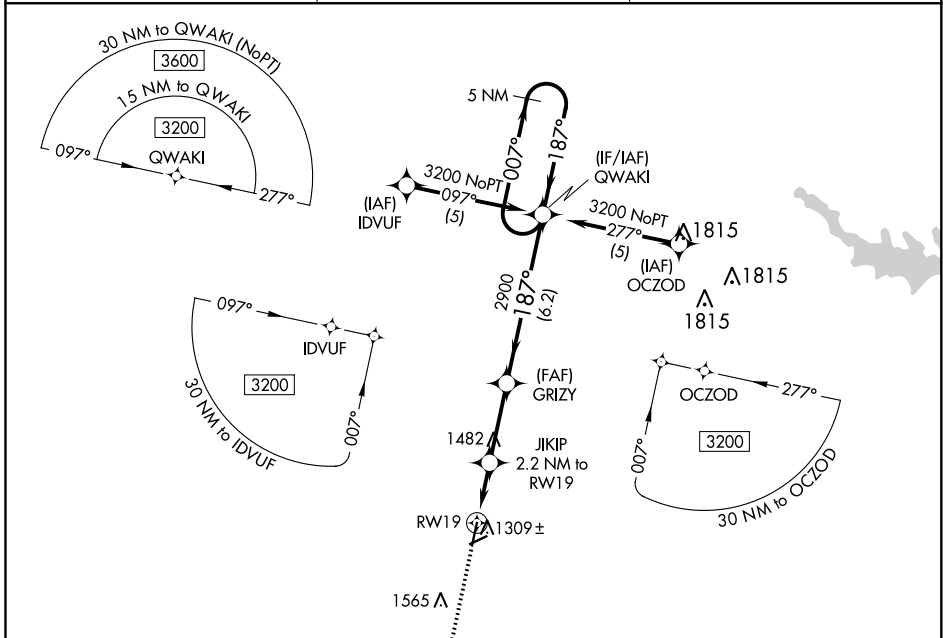
APP CRS	Rwy Idg	<b>4999</b>
<b>187°</b>	TDZE	<b>1208</b>
	Apt Elev	<b>1208</b>

# RNAV (GPS) RWY 19

EMPORIA MUNI (EMP)

RNP APCH-GPS.	MISSED APPROACH: Climb to 3200 direct OVVOD and hold.
---------------	---

ASOS <b>126.125</b>	KANSAS CITY CENTER <b>127.725 270.25</b>	UNICOM <b>122.8 (CTAF) 0</b>
------------------------	---	---------------------------------



CATEGORY	A	B	C	D
LNAV MDA	1560-1 352 (400-1)			NA
CIRCLING	1660-1	452 (500-1)	1880-2 672 (700-2)	NA

NC-2, 02 DEC 2021 to 30 DEC 2021

NC-2, 02 DEC 2021 to 30 DEC 2021

VORTAC EMP <b>112.8</b> Chan 75	APP CRS <b>306°</b>	Rwy Idg TDZE Apt Elev <b>1208</b>	<b>N/A</b> <b>N/A</b>
---------------------------------------	------------------------	--	--------------------------

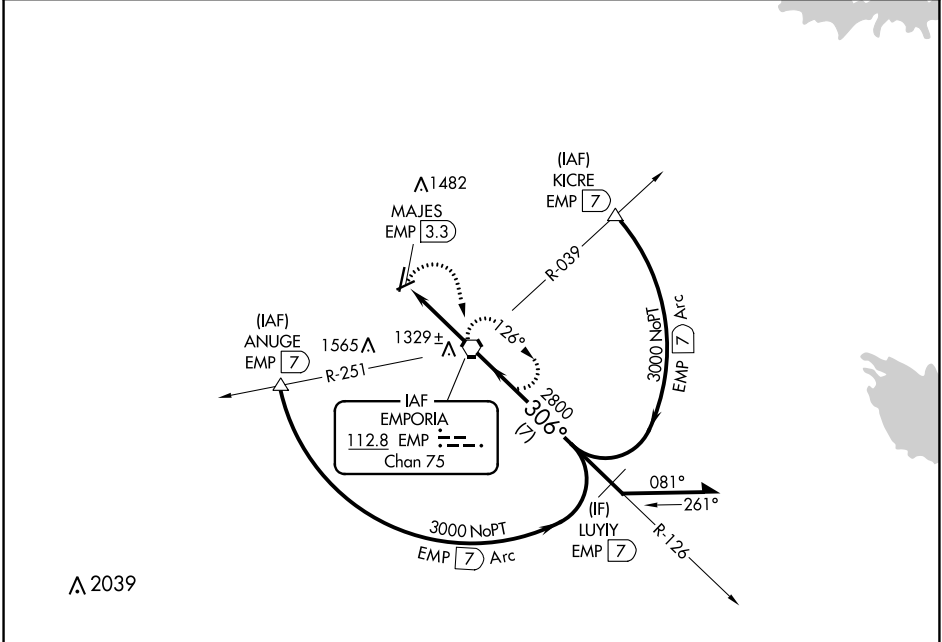
# VOR-A

EMPORIA MUNI (EMP)

**CAUTION:** North/south drag strip 1 mile east of Rwy 1-19. Circling NA to Rwy 6 and 24.

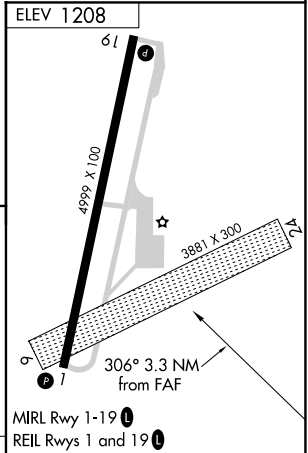
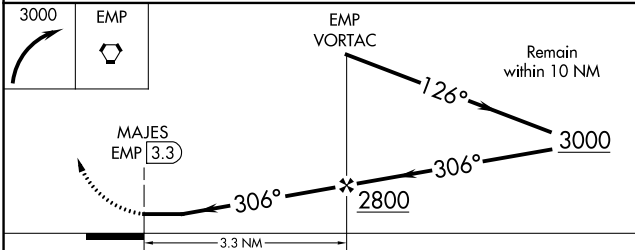
**MISSED APPROACH:** Climbing right turn to 3000 direct EMP VORTAC and hold, continue climb-in-hold to 3000.

ASOS <b>126.125</b>	KANSAS CITY CENTER <b>127.725 270.25</b>	UNICOM <b>122.8 (CTAF) 0</b>
------------------------	---	---------------------------------



NC-2, 02 DEC 2021 to 30 DEC 2021

NC-2, 02 DEC 2021 to 30 DEC 2021



CATEGORY	A	B	C	D	FAF to MAP 3.3 NM												
CIRCLING	1660-1	452 (500-1)	1880-2 672 (700-2)	NA	<table border="1"> <tr> <td>Knots</td> <td>60</td> <td>90</td> <td>120</td> <td>150</td> <td>180</td> </tr> <tr> <td>Min:Sec</td> <td>3:18</td> <td>2:12</td> <td>1:39</td> <td>1:19</td> <td>1:06</td> </tr> </table>	Knots	60	90	120	150	180	Min:Sec	3:18	2:12	1:39	1:19	1:06
Knots	60	90	120	150	180												
Min:Sec	3:18	2:12	1:39	1:19	1:06												