

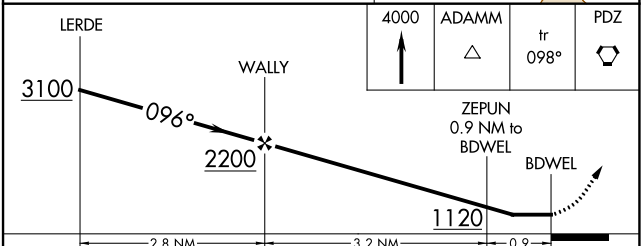
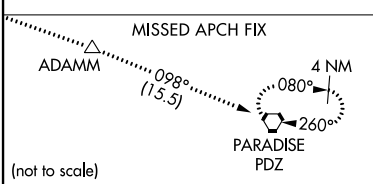
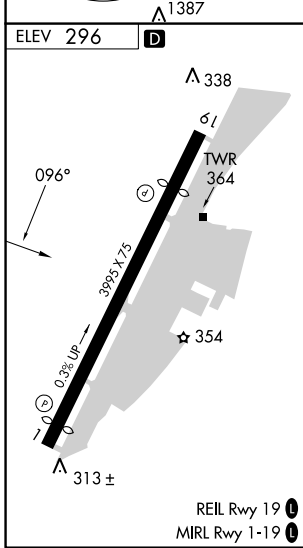
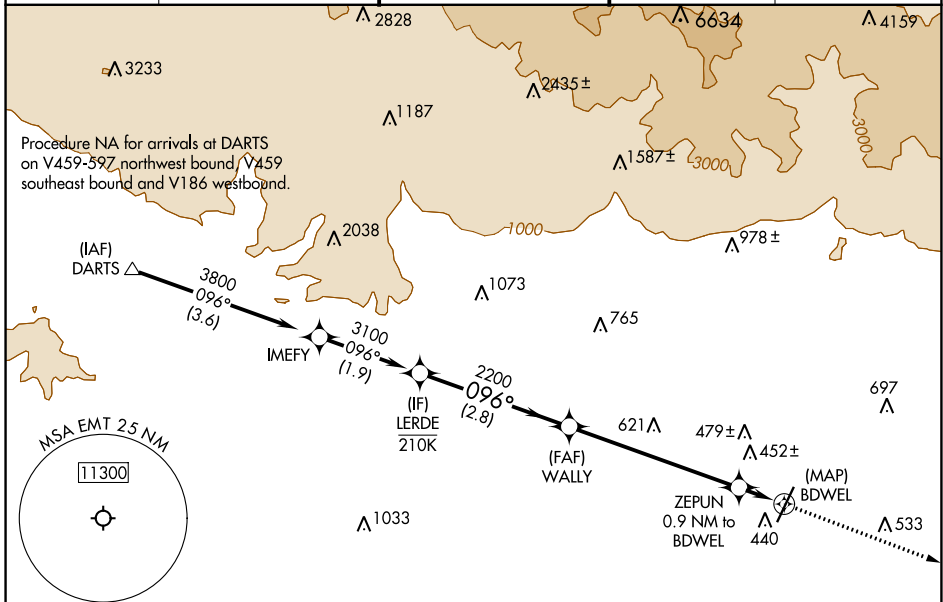
APP CRS	Rwy Idg	N/A
096°	TDZE	N/A
	Apt Elev	296

RNAV (GPS)-B

SAN GABRIEL VALLEY (EMT)

RNP APCH-GPS.		MISSED APPROACH: Climb to 4000 direct ADAMM and on track 098° to PDZ VORTAC and hold.		
<p>⚠ Circling Rwy 1 NA at night. Rwy 1, 19 helicopter visibility reduction below 1 SM NA.</p>				

ATIS 118.75	SOCAL APP CON 125.5 349.0	EL MONTE TOWER * 121.2 (CTAF) 0	GND CON 125.9	UNICOM 122.95
-----------------------	-------------------------------------	---	-------------------------	-------------------------



CATEGORY	A	B	C	D
CIRCLING	820-1 524 (600-1)	960-1 664 (700-1)	1140-2½ 844 (900-2½)	1300-3 1004 (1100-3)

SW-3, 22 FEB 2024 to 21 MAR 2024

SW-3, 22 FEB 2024 to 21 MAR 2024

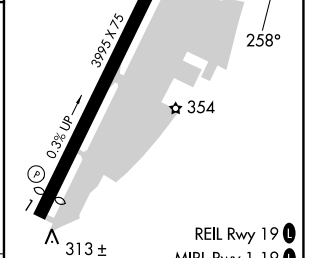
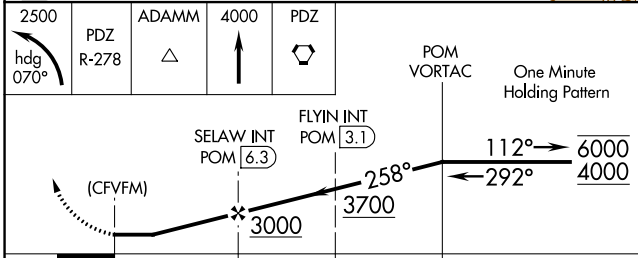
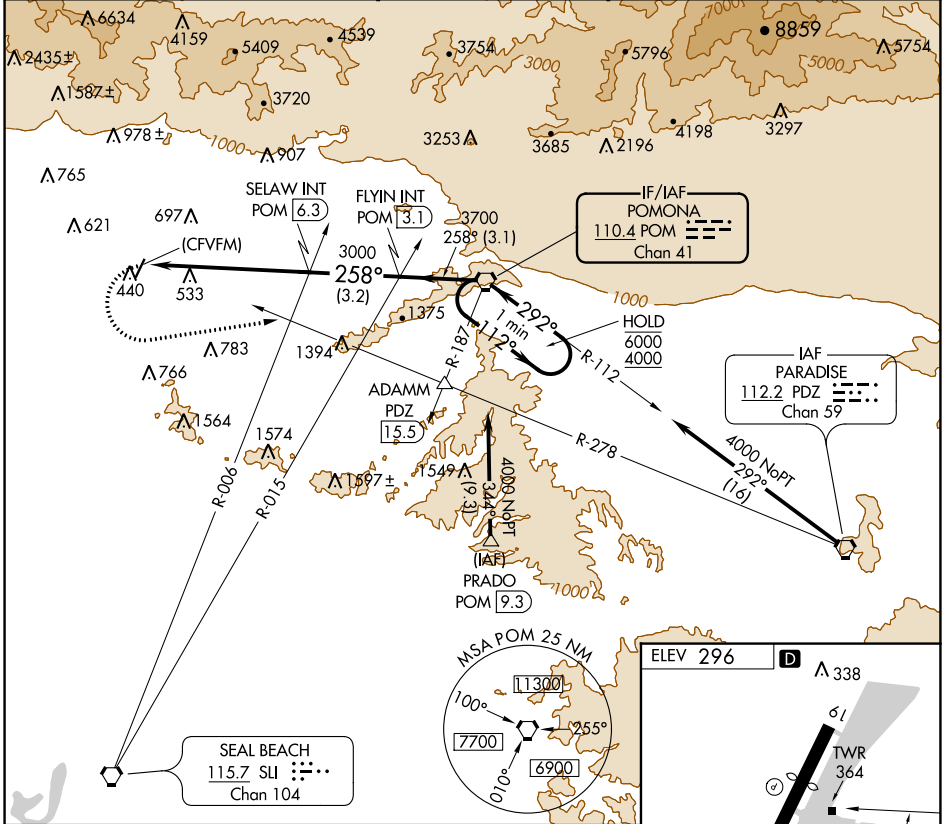
VORTAC POM 110.4 Chan 41	APP CRS 258°	Rwy Idg TDZE Apt Elev N/A N/A 296
---------------------------------------	------------------------	---

VOR-A
SAN GABRIEL VALLEY (EMT)

⚠ Circling Rwy 1 NA at night. When local altimeter setting not received, use Ontario Intl altimeter setting and increase all MDA 160 feet.

⚠ MISSED APPROACH: Climbing left turn to 2500 on heading 070° and PDZ VORTAC R-278 to ADAMM INT/PDZ 15.5 DME then continue climb to 4000 to PDZ VORTAC.

ATIS 118.75	SOCAL APP CON 125.5 349.0	EL MONTE TOWER * 121.2 (CTAF) 0	GND CON 125.9	UNICOM 122.95
-----------------------	-------------------------------------	---	-------------------------	-------------------------



	2500 PDZ R-278	ADAMM △	4000 ↑	PDZ ⬡	POM VORTAC	One Minute Holding Pattern
CATEGORY	A	B	C	D	FAF to MAP 5.9 NM	
C CIRCLING	1280-1¼ 984 (1000-1¼)	1280-1½ 984 (1000-1½)	1280-3 984 (1000-3)	1320-3 1024 (1100-3)	Knots	60 90 120 150 180
					Min:Sec	5:54 3:56 2:57 2:22 1:58

SW-3, 22 FEB 2024 to 21 MAR 2024

SW-3, 22 FEB 2024 to 21 MAR 2024