



LOC/DME I-EVW <b>108.9</b> Chan 26	APP CRS <b>234°</b>	Rwy Idg <b>7300</b> TDZE <b>7143</b> Apt Elev <b>7143</b>
--	------------------------	---

# ILS or LOC/DME RWY 23

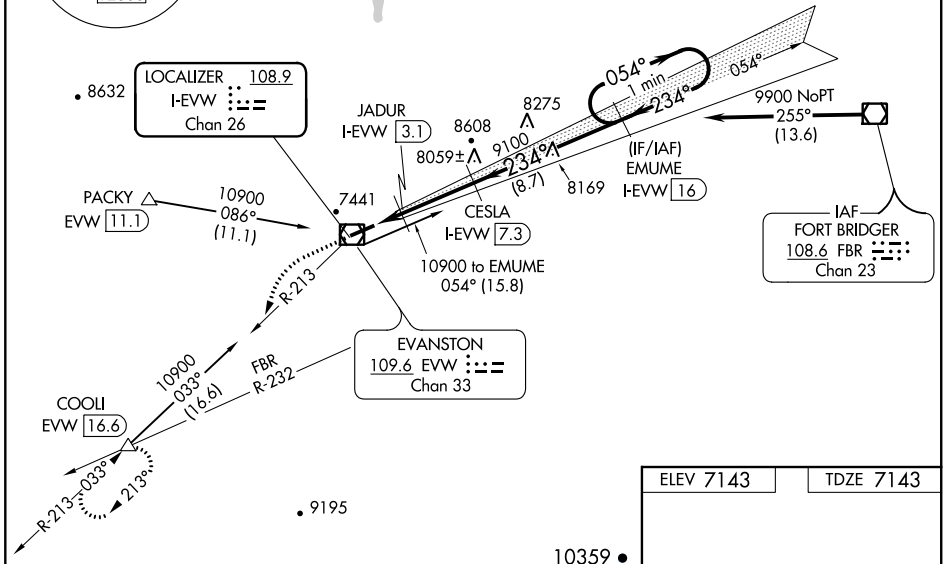
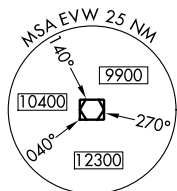
EVANSTON-UINTA COUNTY BURNS FIELD (E V W)

**⚠** For inoperative MALSR, increase S-LOC 23 Cat D visibility to 1 mile. When local altimeter setting not received, procedure NA.

**MALSR**  MISSED APPROACH: Climb to 7600 then dimbling left turn to 12000 via EVW VOR/DME R-213 to COOLI/EVW VOR/DME 16.6 DME and hold, continue climb-in-hold to 12000.

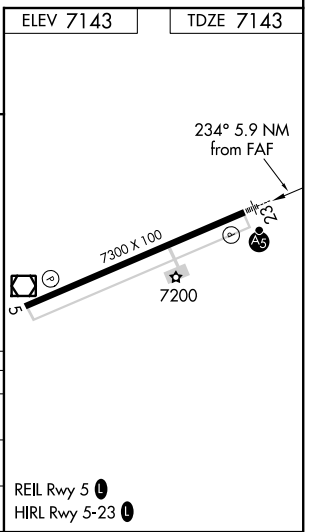
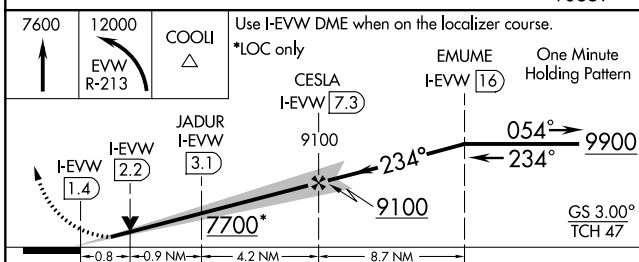
ASOS <b>120.0</b>	SALT LAKE CENTER <b>127.7 354.125</b>	GCO <b>121.72</b>	UNICOM <b>123.0 (CTAF)</b> 
----------------------	--	----------------------	---

Procedure NA for arrivals at FBR VOR/DME via airway radials 213 CW 285.



NW-1, 13 AUG 2020 to 10 SEP 2020

NW-1, 13 AUG 2020 to 10 SEP 2020



CATEGORY	A	B	C	D
S-ILS 23	7343-1/2		200 (200-1/2)	
S-LOC 23	7440-1/2		297 (300-1/2)	7440-3/4 297 (300-3/4)
CIRCLING	7580-1 437 (500-1)	7720-1 577 (600-1)	7760-1 3/4 617 (700-1 3/4)	7760-2 617 (700-2)

WAAS CH <b>77905</b> <b>W23A</b>	APP CRS <b>234°</b>	Rwy Idg TDZE Apt Elev	<b>7300</b> <b>7143</b> <b>7143</b>
--	------------------------	-----------------------------	---

# RNAV (GPS) RWY 23

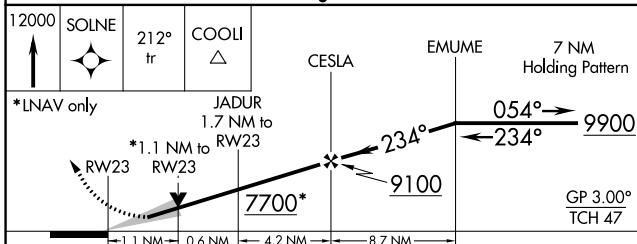
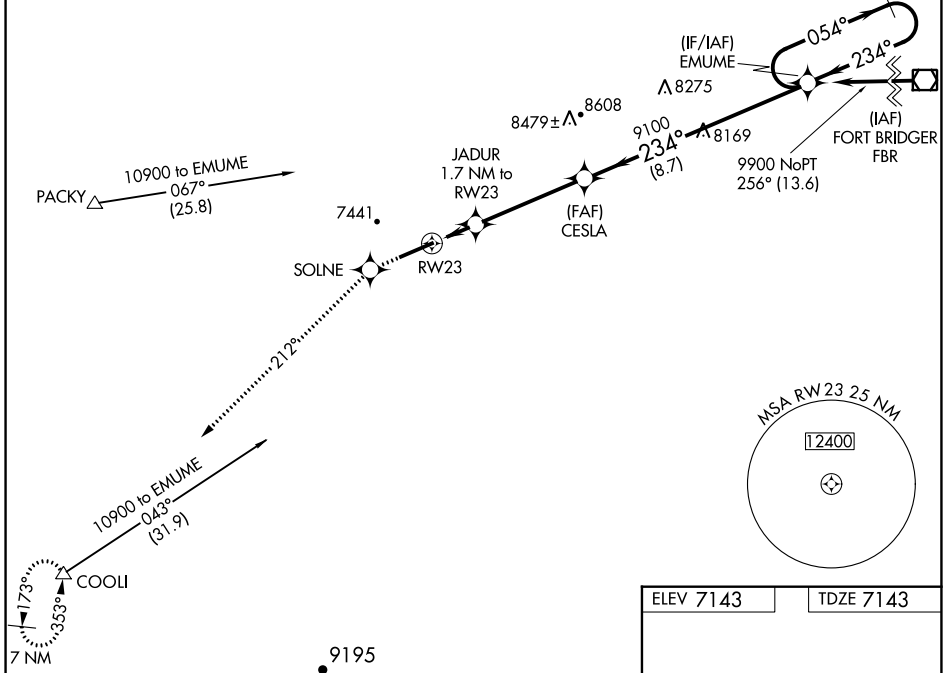
EVANSTON-UINTA COUNTY BURNS FIELD (E V W)

**▼** For inoperative MALSR, increase LPV all Cats visibility to 1, LNAV/VNAV Cat D to 1 and LNAV Cat D to 1½. When local altimeter setting not received, procedure NA. For uncompensated Baro-VNAV systems, LNAV/VNAV NA below -29°C (-20°F) or above 34°C (93°F). DME/DME RNP-0.3 NA.

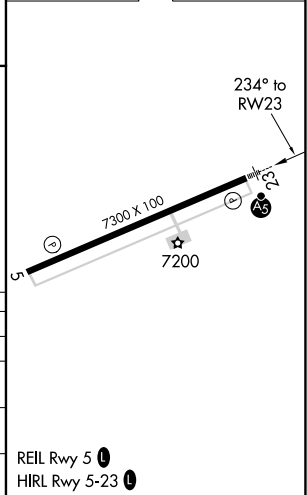
**MALSR**  
MISSED APPROACH: Climb to 1200 direct SOLNE and via 212° track to COOLI and hold, continue climb-in-hold to 1200.

ASOS <b>120.0</b>	SALT LAKE CENTER <b>127.7 354.125</b>	GCO <b>121.72</b>	UNICOM <b>123.0</b> (CTAF) <b>0</b>
----------------------	--	----------------------	--

Procedure NA for arrivals at FBR VOR/DME via airway radials 213 CW 285.



ELEV 7143	TDZE 7143
-----------	-----------



CATEGORY	A	B	C	D
LPV DA	7393-½ 250 (300-½)			
LNAV/VNAV DA	7443-½ 300 (300-½)		7443-¾ 300 (300-¾)	
LNAV MDA	7520-½ 377 (400-½)		7520-1 377 (400-1)	
CIRCLING	7580-1 437 (500-1)	7720-1 577 (600-1)	7760-1¾ 617 (700-¾)	7760-2 617 (700-2)

NW-1, 13 AUG 2020 to 10 SEP 2020

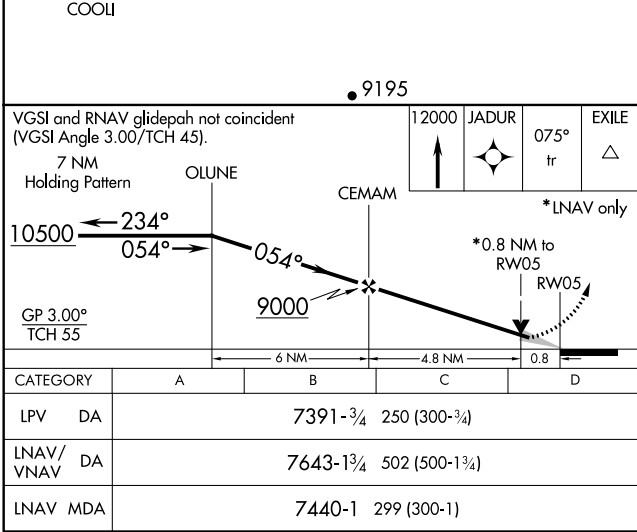
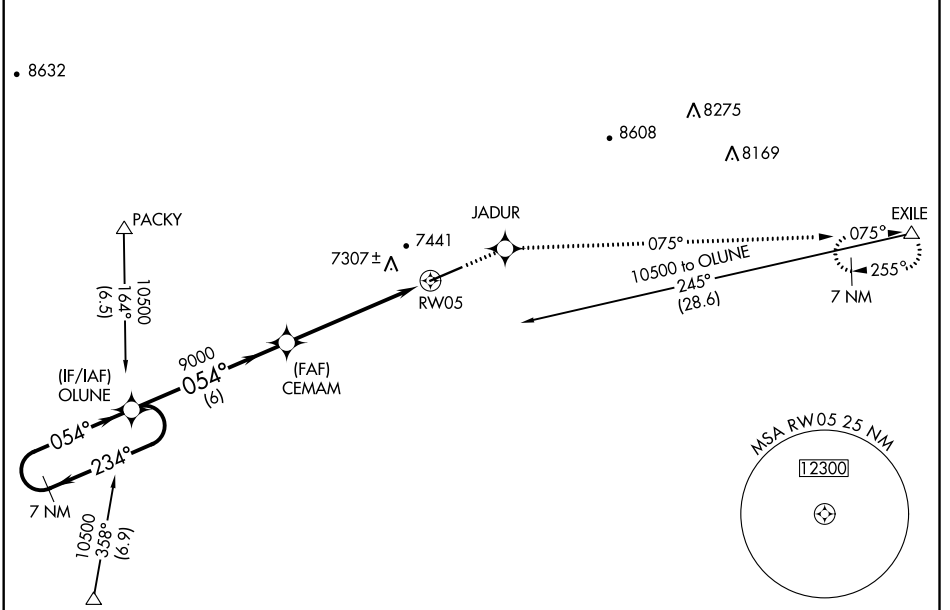
NW-1, 13 AUG 2020 to 10 SEP 2020

WAAS CH <b>78302</b> <b>W05A</b>	APP CRS <b>054°</b>	Rwy Idg TDZE Apt Elev	<b>7300</b> <b>7141</b> <b>7143</b>
--	------------------------	-----------------------------	---

# RNAV (GPS) RWY 5

EVANSTON-UINTA COUNTY BURNS FIELD (E V W)

<b>RNP APCH.</b> ▼ If local altimeter setting not received, procedure NA. For uncompensated Baro-VNAV systems, LNAV/VNAV NA below -29°C (-20°F) or above 34°C (94°F).		MISSED APPROACH: Climb to 12000 direct JADUR and via 075° track to EXILE and hold, continue climb-in-hold to 12000.	
ASOS <b>120.0</b>	SALT LAKE CENTER <b>127.7 354.125</b>	GCO <b>121.72</b>	UNICOM <b>123.0</b> (CTAF) <b>0</b>



ELEV 7143	TDZE 7141
*RNAV only *0.8 NM to RW05	
LPV DA	7391-3/4 250 (300-3/4)
LNAV/VNAV DA	7643-13/4 502 (500-13/4)
LNAV MDA	7440-1 299 (300-1)
REIL Rwy 5 <b>0</b> HIRL Rwy 5-23 <b>0</b>	

NW-1, 13 AUG 2020 to 10 SEP 2020

NW-1, 13 AUG 2020 to 10 SEP 2020

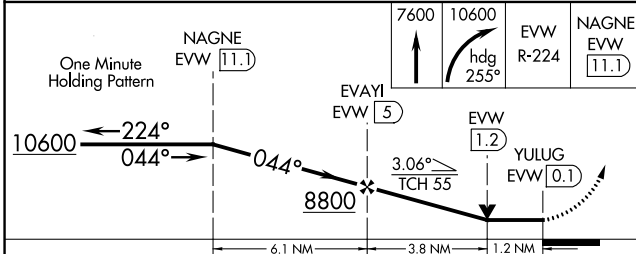
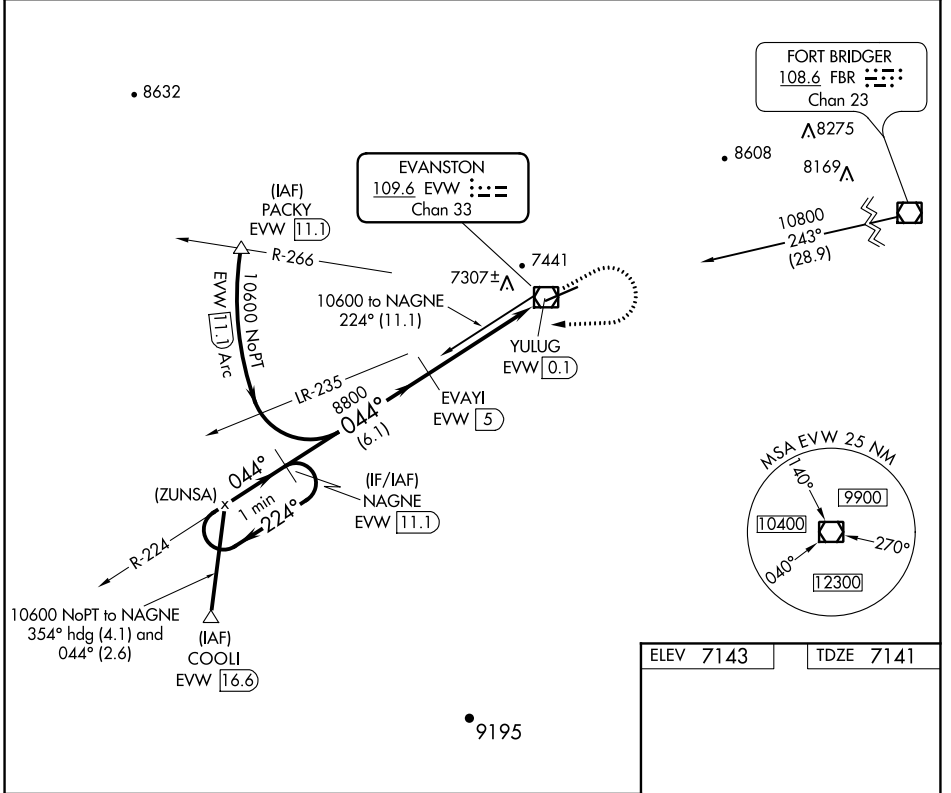
VOR/DME EVW <b>109.6</b> Chan 33	APP CRS <b>044°</b>	Rwy Ldg TDZE <b>7300</b> <b>7141</b> Apt Elev <b>7143</b>
--	------------------------	---

# VOR/DME RWY 5

EVANSTON-UINTA COUNTY BURNS FIELD (E V W)

If local altimeter setting not received, procedure NA. MISSED APPROACH: Climb to 7600, then climbing right turn to 10600 via heading 255° and EVW VOR/DME R-224 to NAGNE/11.1 DME and hold, continue climb-in-hold to 10600.

ASOS <b>120.0</b>	SALT LAKE CENTER <b>127.7 354.125</b>	GCO <b>121.72</b>	UNICOM <b>123.0 (CTAF)</b>
----------------------	--	----------------------	-------------------------------



ELEV 7143	TDZE 7141
-----------	-----------

7300 x 100

7200

044° 5 NM from FAF

REIL Rwy 5

HIRL Rwy 5-23

CATEGORY	A	B	C	D
S-5	7560-1	419 (500-1)	7560-1 ¼	419 (500-1 ¼)
CIRCLING	7580-1 437 (500-1)	7720-1 577 (600-1)	7760-1 ¾ 617 (700-1 ¾)	7760-2 617 (700-2)

NW-1, 13 AUG 2020 to 10 SEP 2020

NW-1, 13 AUG 2020 to 10 SEP 2020