

WAAS CH 82017 W17A	APP CRS 172°	Rwy ldg 4000 TDZE 1040 Apt Elev 1040
--	------------------------	---

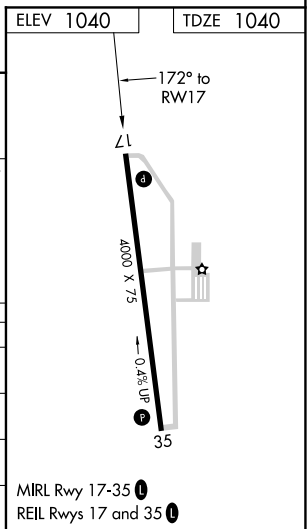
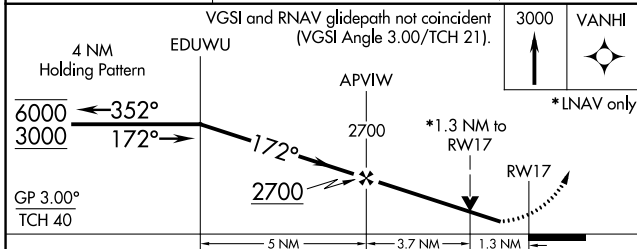
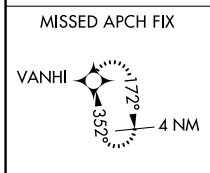
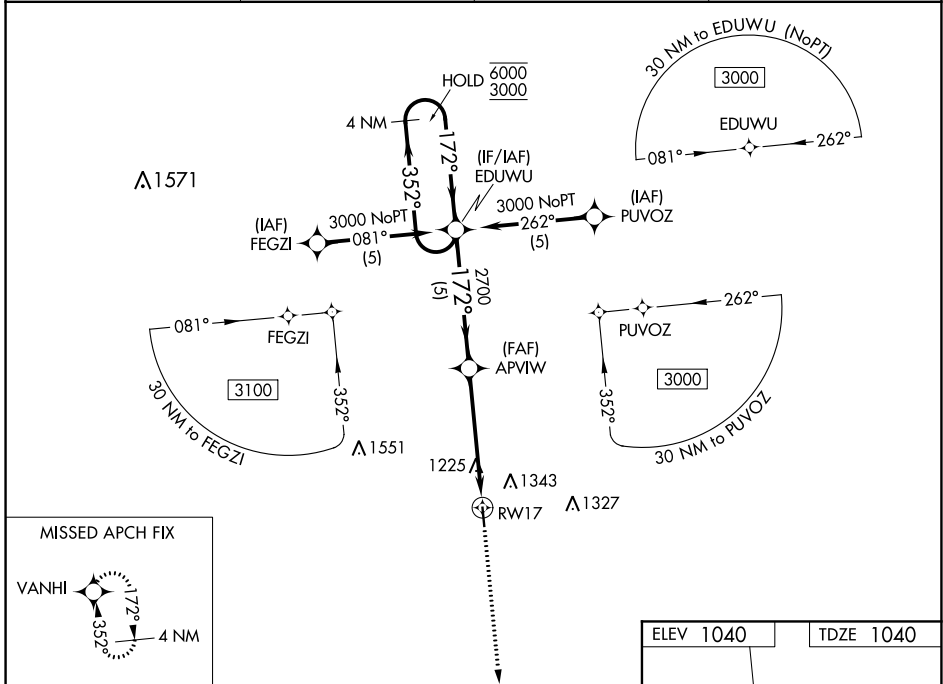
RNAV (GPS) RWY 17

CAMERON MEML (EZZ)

RNP APCH.
 ▼ Rwy 17 helicopter visibility reduction below 3/4 SM NA.
 For uncompensated Baro-VNAV systems, LNAV/VNAV NA below -17°C or above 54°C.

MISSED APPROACH: Climb to 3000 direct VANHI and hold.

AWOS-3 121.05	KANSAS CITY APP CON 118.4 307.35	CLNC DEL 121.6	UNICOM 122.8 (CTAF) ①
-------------------------	--	--------------------------	---------------------------------



CATEGORY	A	B	C	D
LPV DA	1290-3/4	250 (300-3/4)		NA
LNAV/VNAV DA	1518-1 3/8	478 (500-1 3/8)		NA
LNAV MDA	1480-1	440 (500-1)		NA
CIRCLING	1660-1	620 (700-1)		NA

NC-3, 09 SEP 2021 to 07 OCT 2021

NC-3, 09 SEP 2021 to 07 OCT 2021

WAAS CH 77717 W35A	APP CRS 352°	Rwy Idg TDZE Apt Elev	4000 1035 1040
--	------------------------	-----------------------------	---

RNAV (GPS) RWY 35

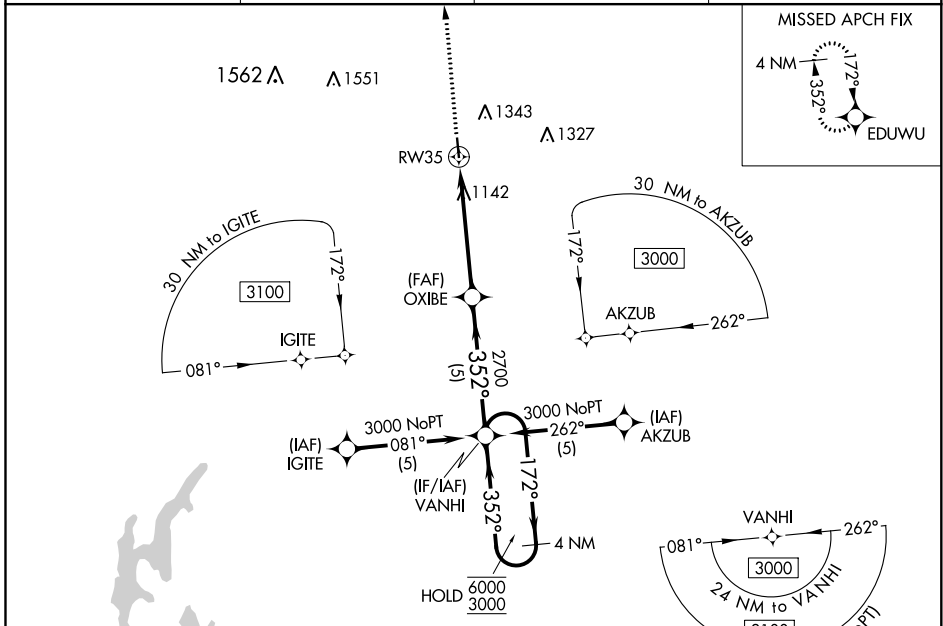
CAMERON MEML (E/ZZ)

RNP APCH.

▼ Rwy 35 helicopter visibility reduction below ¾ SM NA. For uncompensated Baro-VNAV systems, LNAV/VNAV NA below -17°C or above 54°C.

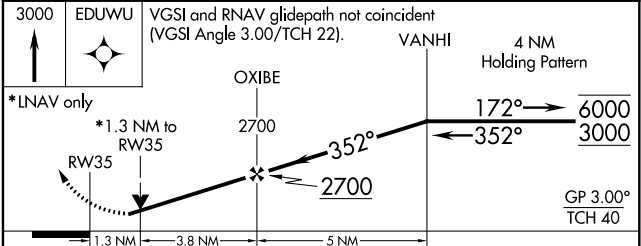
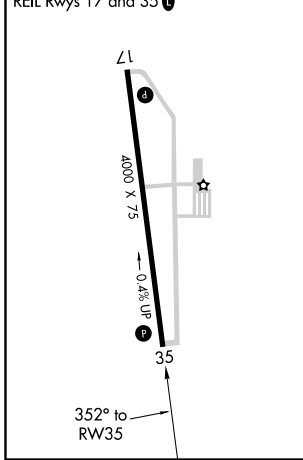
MISSED APPROACH: Climb to 3000 direct EDUWU and hold.

AWOS-3 121.05	KANSAS CITY APP CON 118.4 307.35	CLNC DEL 121.6	UNICOM 122.8 (CTAF) 1
-------------------------	--	--------------------------	--



ELEV 1040	TDZE 1035
-----------	-----------

MIRL Rwy 17-35 **1**
REIL Rwys 17 and 35 **1**



CATEGORY	A	B	C	D
LPV DA	1285-¾	250 (300-¾)		NA
LNAV/VNAV DA	1310-⅞	275 (300-⅞)		NA
LNAV MDA	1460-1	425 (500-1)		NA
CIRCLING	1660-1	620 (700-1)		NA

NC-3, 09 SEP 2021 to 07 OCT 2021

NC-3, 09 SEP 2021 to 07 OCT 2021