

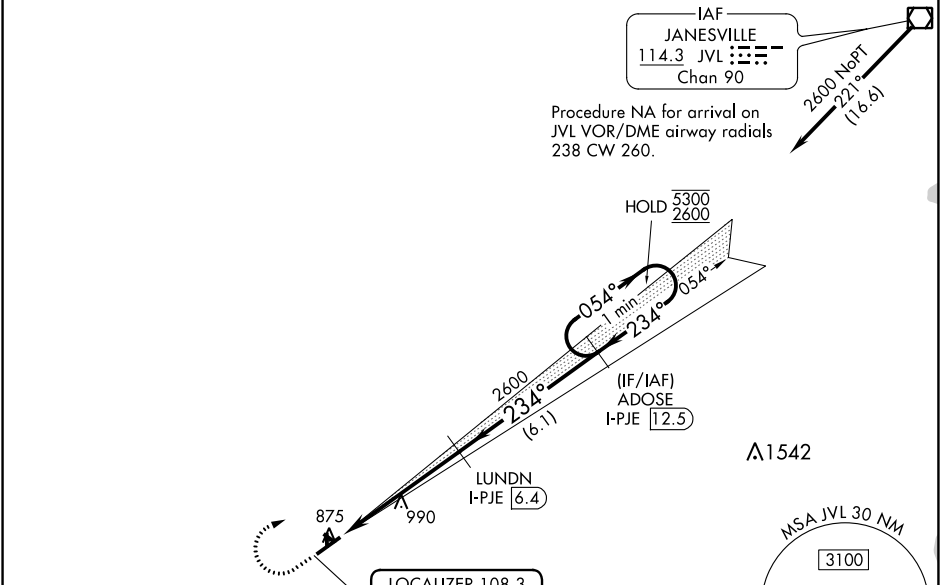
LOC/DME I-PJE <b>108.3</b> Chan 20	APP CRS <b>234°</b>	Rwy Idg TDZE Apt Elev	<b>5504</b> <b>847</b> <b>859</b>
--	------------------------	-----------------------------	---

# ILS or LOC RWY 24

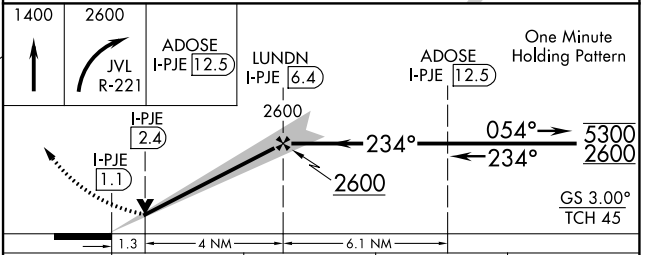
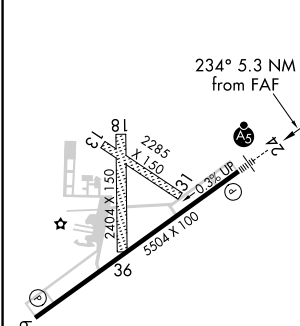
ALBERTUS (FEP)

DME required.	<p>▼ <b>NA</b></p> <p>VDP NA when using Chicago/Rockford altimeter setting. Circling NA to Rwys 13, 18, 31, 36. For inop ALS when using Chicago/Rockford altimeter setting, increase S-ILS 24 all Cats visibility to 7/8 SM. When local altimeter setting not received, use Chicago/Rockford altimeter setting: increase all DA to 1114 feet; increase all MDA 80 feet and S-LOC 24 Cat C/D visibility 1/8 SM and Circling Cat C/D 1/4 SM.</p>	<p>MALSR</p>	<p>MISSED APPROACH: Climb to 1400 then climbing right turn to 2600 on JVL VOR/DME R-221 to ADOSE/I-PJE 12.5 DME and hold.</p>
---------------	--	--------------	---

AWOS-3 <b>120.525</b>	ROCKFORD APP CON <b>126.0 327.0</b>	CINC DEL <b>121.85</b>	UNICOM <b>122.8 (CTAF)</b>
--------------------------	--	---------------------------	-------------------------------



ELEV 859	TDZE 847
----------	----------



	A	B	C	D
CATEGORY				
S-ILS 24	1047-1/2		200 (200-1/2)	
S-LOC 24	1300-1/2	453 (500-1/2)	1300-7/8	453 (500-7/8)
CIRCLING	1320-1 461 (500-1)	1400-1 541 (600-1)	1440-1 1/2 581 (600-1 1/2)	1620-2 1/2 761 (800-2 1/2)

EC-3, 22 FEB 2024 to 21 MAR 2024

EC-3, 22 FEB 2024 to 21 MAR 2024

WAAS CH <b>78403</b> <b>W24A</b>	APP CRS <b>234°</b>	Rwy Idg TDZE Apt Elev	<b>5504</b> <b>847</b> <b>859</b>
--	------------------------	-----------------------------	---

# RNAV (GPS) RWY 24

ALBERTUS (F'EP)

### RNP APCH - GPS

**▼** For uncompensated Baro-VNAV systems, LNAV/VNAV NA below -16°C or above 54°C.  
**▲** When local altimeter setting not received, use Chicago/Rockford altimeter setting: increase LPV and LNAV/VNAV DA to 1164 feet; increase all MDA 80 feet and LNAV visibility Cat C/D and Circling Cat C/D visibility ¼ SM. Baro-VNAV and VDP NA when using Chicago/Rockford altimeter setting. Circling NA to Rwy's 13, 18, 31, 36. For inop ALS, increase LNAV/VNAV all Cats visibility to ¾ SM. For inop ALS, when using Chicago/Rockford altimeter setting, increase LPV and LNAV/VNAV all Cats visibility to ⅘ SM and LNAV C/D visibility to 1⅘ SM.

MALSR



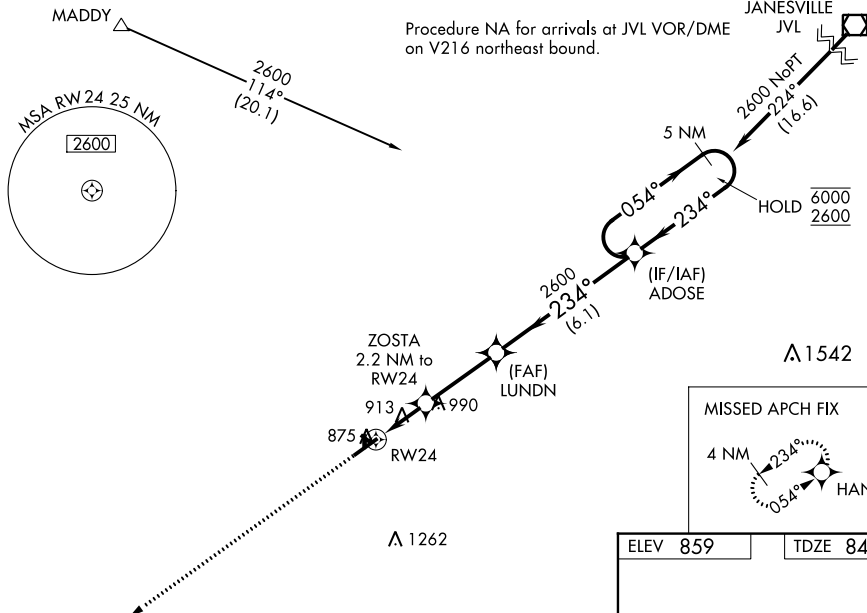
**MISSED APPROACH:**  
Climb to 2600 direct HANKS and hold.

AWOS-3  
**120.525**

ROCKFORD APP CON  
**126.0 327.0**

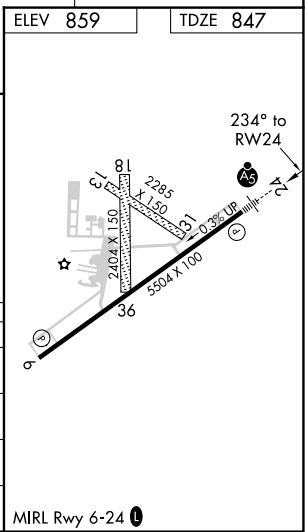
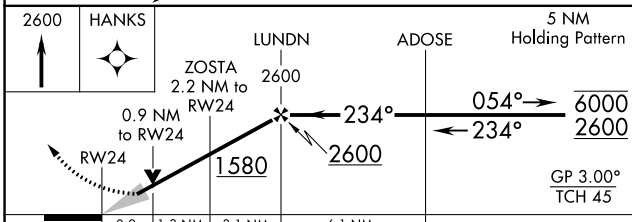
CLNC DEL  
**121.85**

UNICOM  
**122.8** (CTAF)



EC-3, 22 FEB 2024 to 21 MAR 2024

EC-3, 22 FEB 2024 to 21 MAR 2024



CATEGORY	A	B	C	D
LPV DA		1097-½	250 (300-½)	
LNAV/VNAV DA		1097-½	250 (300-½)	
LNAV MDA		1180-½	333 (400-½)	
CIRCLING	1320-1 461 (500-1)	1400-1 541 (600-1)	1440-1½ 581 (600-1½)	1620-2½ 761 (800-2½)

MIRL Rwy 6-24

WAAS CH <b>56404</b> <b>W06A</b>	APP CRS <b>054°</b>	Rwy Idg TDZE Apt Elev	<b>5504</b> <b>859</b> <b>859</b>
--	------------------------	-----------------------------	---

# RNAV (GPS) RWY 6

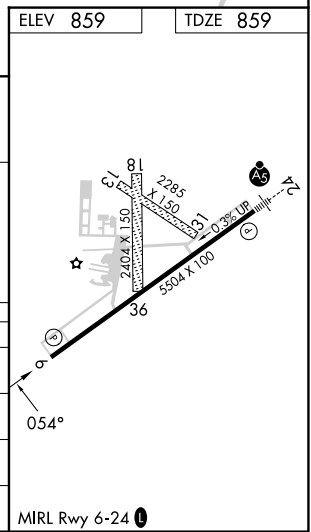
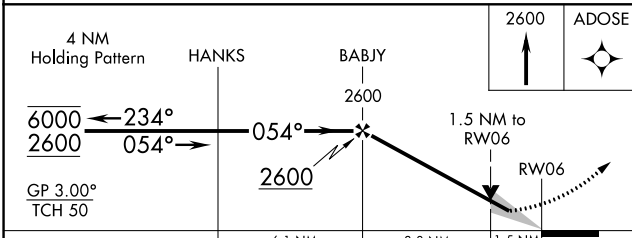
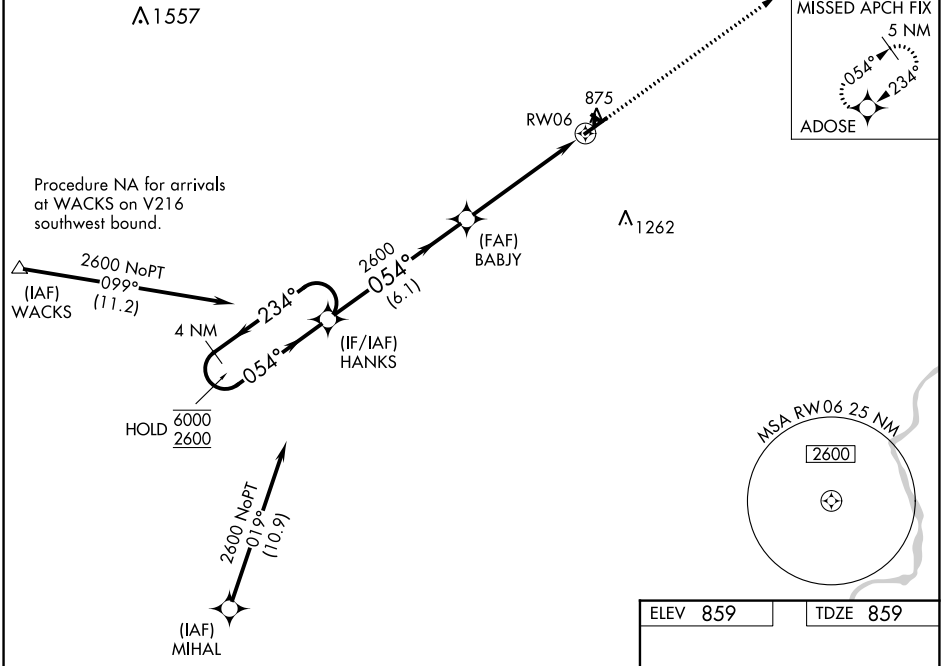
ALBERTUS (FEP)

RNP APCH - GPS.

**⚠** Circling NA to Rwy 13, 18, 31, and 36.  
For uncompensated Baro-VNAV systems,  
LNAV/VNAV NA below -16°C or above 54°C.

MISSED APPROACH:  
Climb to 2600 direct  
ADOSE and hold.

AWOS-3 <b>120.525</b>	ROCKFORD APP CON <b>126.0 327.0</b>	CLNC DEL <b>121.85</b>	UNICOM <b>122.8 (CTAF) 0</b>
--------------------------	--	---------------------------	---------------------------------



CATEGORY	A	B	C	D
LPV DA		1109- <sup>3</sup> / <sub>4</sub>	250 (300- <sup>3</sup> / <sub>4</sub> )	
LNAV/VNAV DA		1371-1 <sup>3</sup> / <sub>8</sub>	512 (600-1 <sup>3</sup> / <sub>8</sub> )	
LNAV MDA	1380-1	521 (600-1)	1380-1 <sup>1</sup> / <sub>2</sub>	521 (600-1 <sup>1</sup> / <sub>2</sub> )
CIRCLING	1380-1 521 (600-1)	1400-1 541 (600-1)	1440-1 <sup>1</sup> / <sub>2</sub> 581 (600-1 <sup>1</sup> / <sub>2</sub> )	1620-2 <sup>1</sup> / <sub>2</sub> 761 (800-2 <sup>1</sup> / <sub>2</sub> )

EC-3, 22 FEB 2024 to 21 MAR 2024

EC-3, 22 FEB 2024 to 21 MAR 2024