

WAAS CH 65829 W11A	APP CRS 106°	Rwy Idg TDZE Apt Elev	4001 1277 1277
--	------------------------	-----------------------------	---

RNAV (GPS) RWY 11

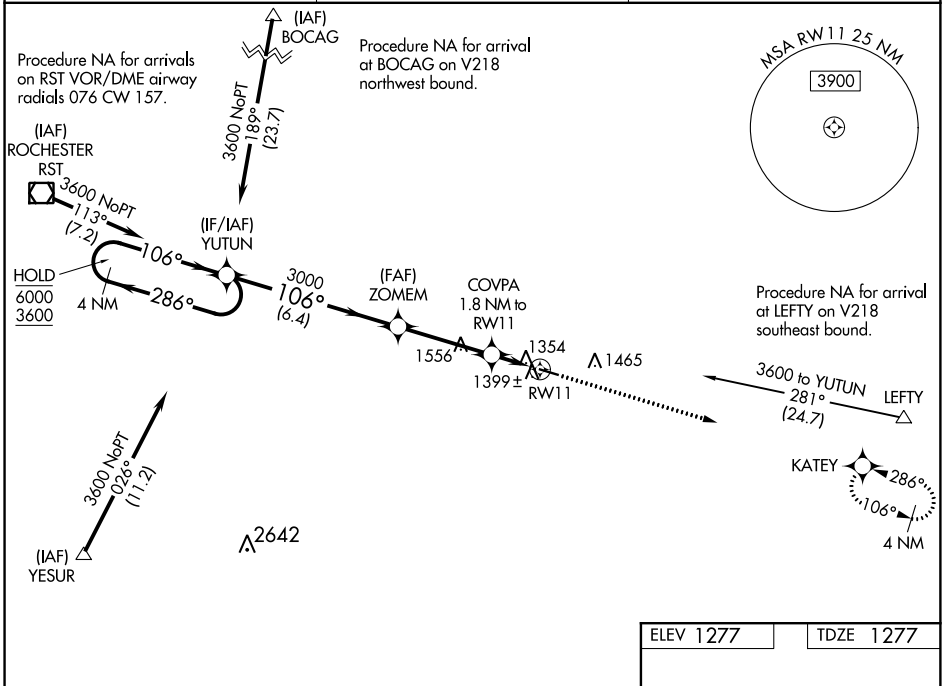
FILLMORE COUNTY (FKA)

RNP APCH.

▼ For uncompensated Baro-VNAV systems, LNAV/VNAV NA below -17°C or above 54°C.
Rwy 11 helicopter visibility reduction below 3/4 SM NA.

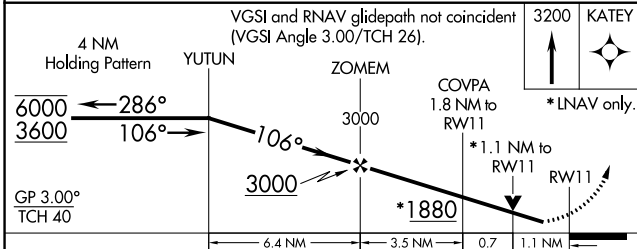
MISSED APPROACH: Climb to 3200 direct KATEY and hold.

AWOS-3 118.55	ROCHESTER APP CON ★ 119.8 251.125	CTAF 122.9 0
-------------------------	---	------------------------



NC-1, 30 JAN 2020 to 27 FEB 2020

NC-1, 30 JAN 2020 to 27 FEB 2020



ELEV 1277	TDZE 1277
-----------	-----------

CATEGORY	A	B	C	D
LPV DA		1527-1 250 (300-1)		NA
LNAV/VNAV DA		1573-1 296 (300-1)		NA
LNAV MDA	1660-1 383 (400-1)		1660-1 383 (400-1 1/8)	NA
CIRCLING	1700-1 423 (500-1)	1820-1 543 (600-1)	1820-1 543 (600-1 1/2)	NA

WAAS CH 70529 W29A	APP CRS 286°	Rwy Idg TDZE Apt Elev	4001 1277 1277
--	------------------------	-----------------------------	---

RNAV (GPS) RWY 29

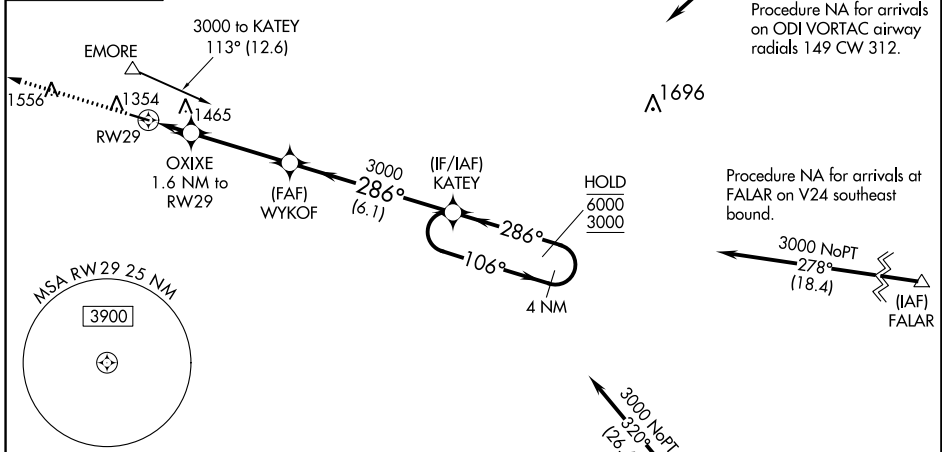
FILLMORE COUNTY (FKA)

RNP APCH.

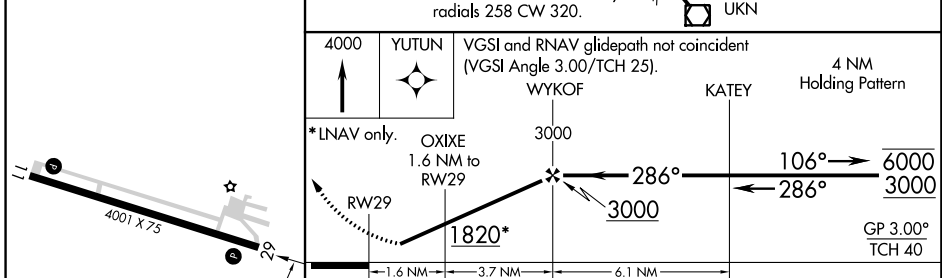
⚠ Helicopter visibility reduction below 3/4 SM NA. Baro-VNAV NA when using Rochester Intl altimeter setting. For uncompensated Baro-VNAV systems, LNAV/VNAV NA below -17°C (2°F) or above 54°C (130°F). When local altimeter setting not received, use Rochester Intl altimeter setting and increase all DA 51 feet and all MDA 60 feet and increase LNAV/VNAV all Cats and LNAV Cat C visibility 1/8 mile and Circling Cat C visibility 1/4 mile.

MISSED APPROACH: Climb to 4000 direct YUTUN and hold

AWOS-3 118.55	ROCHESTER APP CON* 119.8 251.125	CTAF 122.9
-------------------------	--	----------------------



ELEV 1277	TDZE 1277
-----------	-----------



CATEGORY	A	B	C	D
LPV DA	1527-1	250 (300-1)		NA
LNAV/VNAV DA	1550-1	273 (300-1)		NA
LNAV MDA	1700-1	423 (500-1)	1700-1 1/4 423 (500-1 1/4)	NA
CIRCLING	1700-1 423 (500-1)	1820-1 543 (600-1)	1820-1 1/2 543 (600-1 1/2)	NA

NC-1, 30 JAN 2020 to 27 FEB 2020

NC-1, 30 JAN 2020 to 27 FEB 2020