

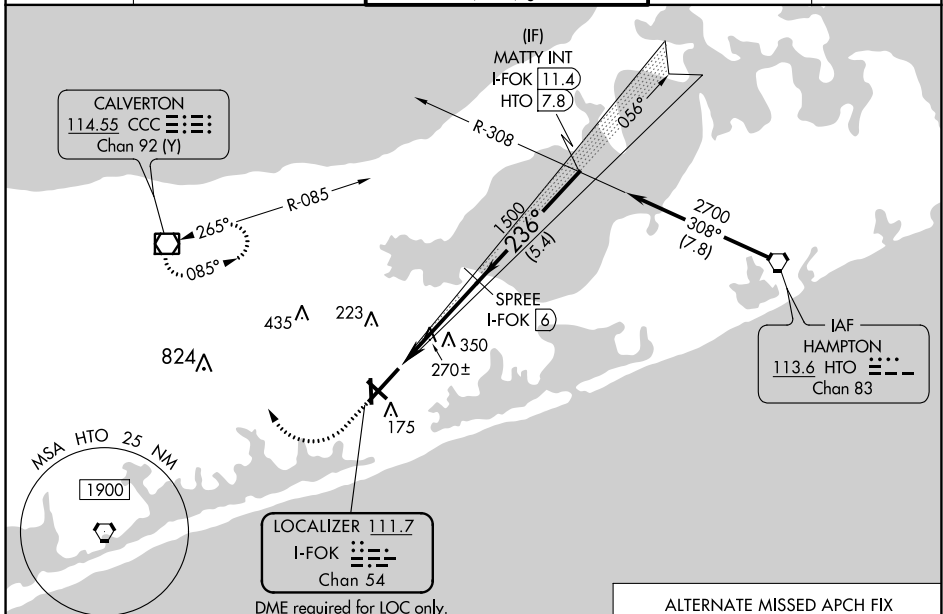
LOC/DME I-FOK 111.7 Chan 54	APP CRS 236°	Rwy ldg TDZE 66 Apt Elev 66	9002
---	------------------------	--	-------------

ILS or LOC RWY 24

FRANCIS S GABRESKI (F'OK)

 Circling Rwy 15 NA at night.	MALSR 	MISSED APPROACH: Climb to 880 then climbing right turn to 2000 direct CCC VOR/DME and hold.
----------------------------------	-----------	---

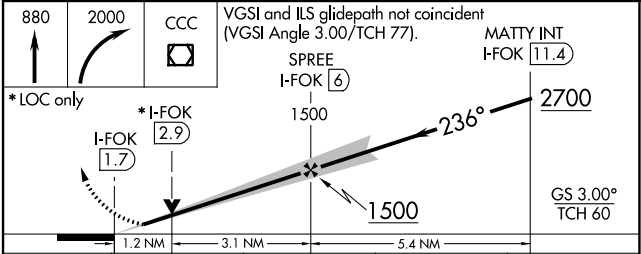
ASOS 119.925	NEW YORK APP CON 125.975 343.65	SUFFOLK COUNTY TOWER ★ 125.3 (CTAF) 236.6	GND CON 121.8 225.4	UNICOM 122.95
------------------------	---	--	-------------------------------	-------------------------



ELEV 66	TDZE 66
---------	---------

HIRL Rwy 6-24	MIRL Rwy 15-33	REL Rwys 6, 15, and 33			
FAF to MAP 4.3 NM					
Knots	60	90	120	150	180
Min:Sec	4:18	2:52	2:09	1:43	1:26

ALTERNATE MISSED APCH FIX



CATEGORY	A	B	C	D
S-ILS 24	266-1/2 200 (200-1/2)			
S-LOC 24	520-1/2	454 (500-1/2)	520-7/8	454 (500-7/8)
CIRCLING	600-1 534 (600-1)	620-1 554 (600-1)	700-1 3/4 634 (700-1 3/4)	740-2 1/4 674 (700-2 1/4)

NE-2, 22 FEB 2024 to 21 MAR 2024

NE-2, 22 FEB 2024 to 21 MAR 2024

WAAS CH 40009 W24A	APP CRS 236°	Rwy Idg TDZE Apt Elev	9002 66 66
--	------------------------	-----------------------------	---------------------------------------

RNAV (GPS) RWY 24

FRANCIS S GABRESKI (F'OK)

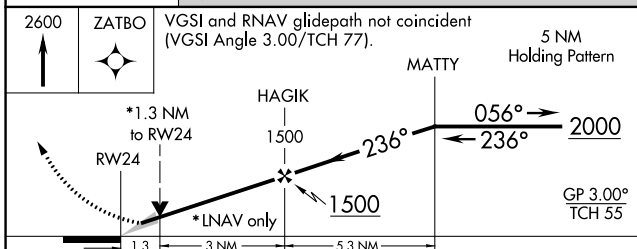
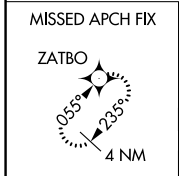
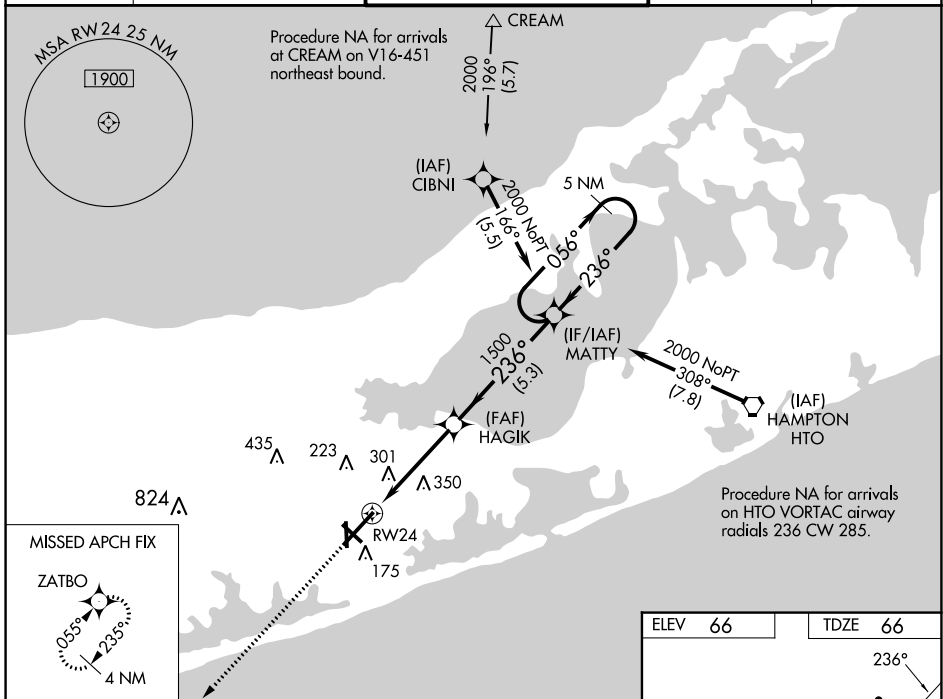
⚠ For uncompensated Baro-VNAV systems, LNAV/VNAV NA below -15°C (5°F) or above 43°C (109°F). DME/DME RNP-0.3 NA. When local altimeter setting not received, use Shirley altimeter setting: increase LPV DA to 293 feet; increase LNAV/VNAV DA to 632 feet and all Cats visibility 1/8 SM; increase all MDAs 40 feet and Circling Cat C visibility 1/4 SM. Baro-VNAV and VDP NA when using Shirley altimeter setting. Circling Rwy 15 NA at night.

MAISR

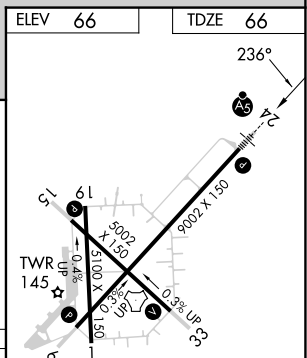


MISSED APPROACH:
Climb to 2600 direct ZATBO and hold.

ASOS 119.925	NEW YORK APP CON 125.975 343.65	SUFFOLK COUNTY TOWER * 125.3 (CTAF) 236.6	GND CON 121.8 225.4	UNICOM 122.95
------------------------	---	---	-------------------------------	-------------------------



CATEGORY	A	B	C	D
LPV DA		266-1/2	200 (200-1/2)	
LNAV/VNAV DA		605-1 3/8	539 (600-1 3/8)	
LNAV MDA	560-1/2	494 (500-1/2)	560-1	494 (500-1)
CIRCLING	600-1 534 (600-1)	620-1 554 (600-1)	700-1 3/4 634 (700-1 3/4)	740-2 1/4 674 (700-2 1/4)



HIRL Rwy 6-24 **1**
MIRL Rwy 15-33 **1**
REIL Rwy 6, 15, and 33 **1**

NE-2, 22 FEB 2024 to 21 MAR 2024

NE-2, 22 FEB 2024 to 21 MAR 2024

WAAS CH 81822 W06A	APP CRS 055°	Rwy ldg TDZE Apt Elev 9002 57 66
--	------------------------	--

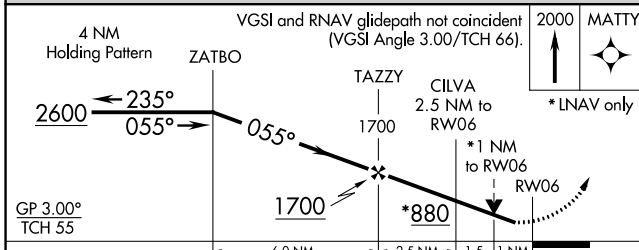
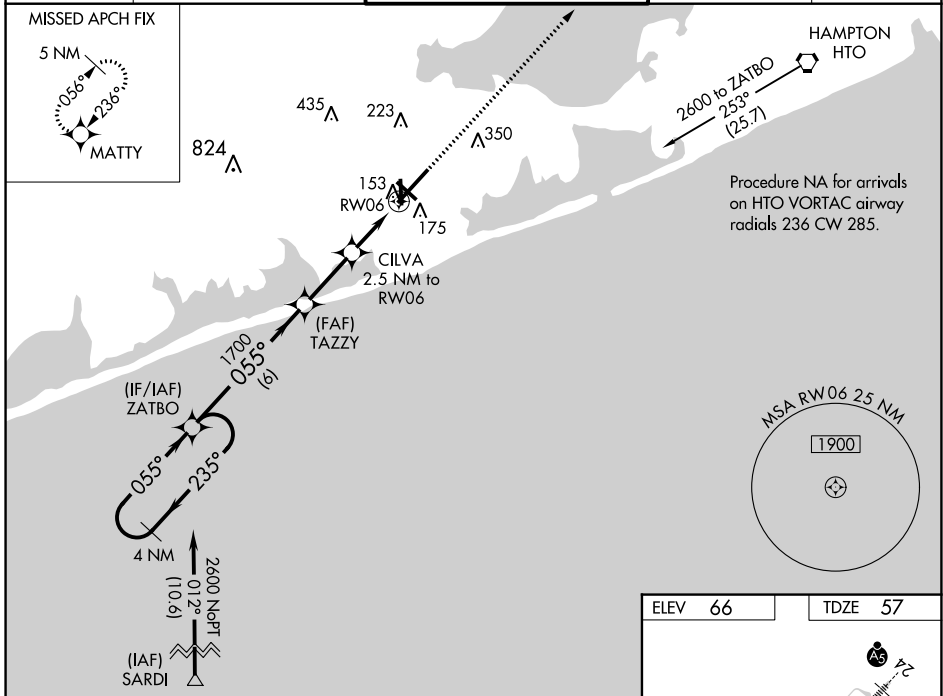
RNAV (GPS) RWY 6

FRANCIS S GABRESKI (F'OK)

⚠ Helicopter visibility reduction below ¾ SM not authorized. For uncompensated Baro-VNAV systems, LNAV/VNAV NA below -15°C (5°F) or above 43°C (109°F). DME/DME RNP-0.3 NA. When local altimeter setting not received, use Shirley altimeter setting: increase LPV DA to 325 feet and all Cats visibility ½ SM; increase LNAV/VNAV DA to 361 feet and all Cats visibility ½ SM; increase all MDAs 40 feet and LNAV Cats C/D visibility ½ SM and Circling Cat C visibility ¼ SM. Baro-VNAV and VDP NA when using Shirley altimeter setting. Circling Rwy 15 NA at night.

MISSED APPROACH:
Climb to 2000 direct MATTY and hold.

ASOS 119.925	NEW YORK APP CON 125.975 343.65	SUFFOLK COUNTY TOWER ★ 125.3 (CTAF) 0 236.6	GND CON 121.8 225.4	UNICOM 122.95
------------------------	---	---	-------------------------------	-------------------------



ELEV	66	TDZE	57
------	----	------	----

HIRL Rwy 6-24 **1**
MIRL Rwy 15-33 **1**
REIL Rwy 6, 15, and 33 **1**

CATEGORY	A	B	C	D
LPV DA		307-¾	250 (300-¾)	
LNAV/VNAV DA		343-⅞	286 (300-⅞)	
LNAV MDA		420-1	363 (400-1)	
CIRCLING	600-1 534 (600-1)	620-1 554 (600-1)	700-1¾ 634 (700-1¾)	740-2¼ 674 (700-2¼)

NE-2, 22 FEB 2024 to 21 MAR 2024

NE-2, 22 FEB 2024 to 21 MAR 2024

TACAN FOK Chan 47 (111.0)	APP CRS 230°	Rwy Idg TDZE 66 Apt Elev 66	9002
---------------------------------	-----------------	-----------------------------------	------

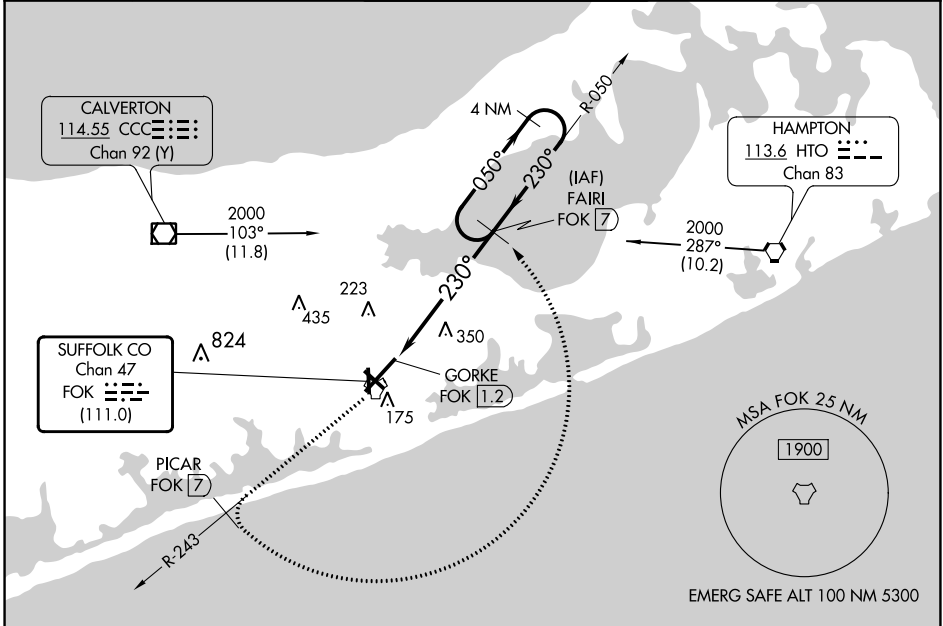
TACAN RWY 24

FRANCIS S GABRESKI (F'OK)

VDP NA with Shirley altimeter setting. When local altimeter setting not received, use Shirley altimeter setting and increase all MDAs 40 feet and S-24 Cat C/D visibility ½ SM and Circling Cat C visibility ¼ SM. Circling Rwy 15 NA at night.

MALSRS
MISSED APPROACH: Climb to 2000 on FOK TACAN R-243 to PICAR/7 DME then arc CCW to FAIRI/7 DME and hold.

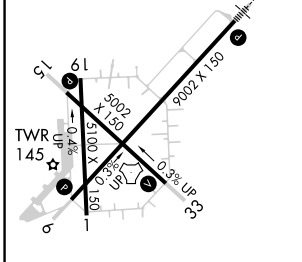
ASOS 119.925	NEW YORK APP CON 125.975 343.65	SUFFOLK COUNTY TOWER ★ 125.3 (CTAF) 236.6	GND CON 121.8 225.4	UNICOM 122.95
------------------------	---	---	-------------------------------	-------------------------



NE-2, 22 FEB 2024 to 21 MAR 2024

NE-2, 22 FEB 2024 to 21 MAR 2024

ELEV 66	TDZE 66
---------	---------



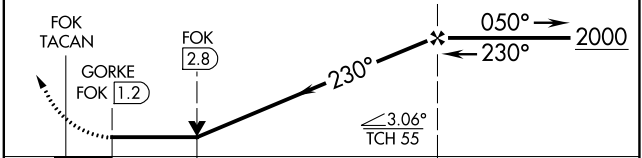
HIRL Rwy 6-24 (L)
MIRL Rwy 15-33 (L)
REIL Rws 6, 15, and 33 (L)

2000
↑
FOK R-243

PICAR FOK (7)	Arc CCW	FAIRI FOK (7)
---------------	---------	---------------

VGSI and descent angles not coincident (VGSI Angle 3.00/TCH 77).

FAIRI FOK (7) 4 NM Holding Pattern



CATEGORY	A	B	C	D
S-24	660-½ 594 (600-½)		660-1¼ 594 (600-1¼)	
CIRCLING	660-1 594 (600-1)		700-1¾ 634 (700-1¾)	740-2¼ 674 (700-2¼)

TACAN FOK Chan 47 (111.0)	APP CRS 063°	Rwy Idg 9002 TDZE 57 Apt Elev 66
--	------------------------	---

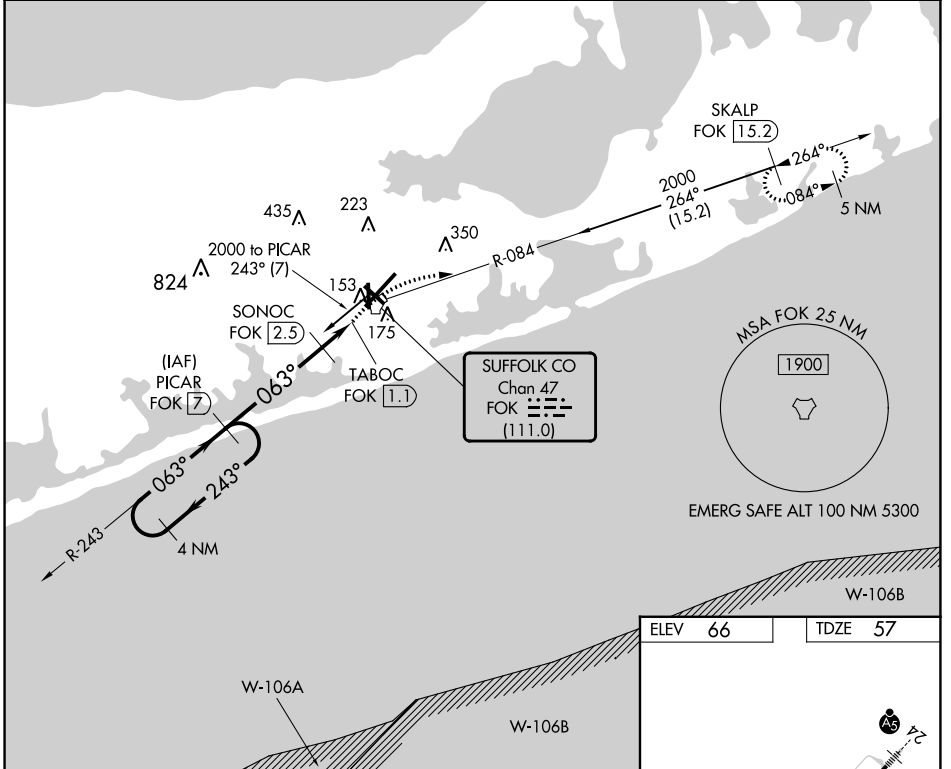
TACAN RWY 6

FRANCIS S GABRESKI (F'OK)

⚠ Helicopter visibility reduction below 3/4 SM not authorized. When local altimeter setting not received, use Shirley altimeter setting and increase all MDAs 40 feet and S-6 Cat C/D visibility 1/8 SM and Circling Cat C visibility 1/4 SM. Circling Rwy 1.5 NA at night.

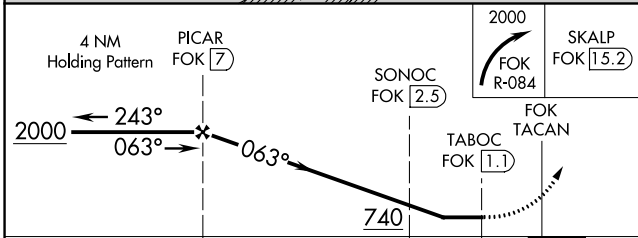
MISSED APPROACH: Climbing right turn to 2000 on FOK TACAN R-084 to SKALP/15.2 DME and hold.

ASOS 119.925	NEW YORK APP CON 125.975 343.65	SUFFOLK COUNTY TOWER ★ 125.3 (CTAF) 236.6	GND CON 121.8 225.4	UNICOM 122.95
------------------------	---	---	-------------------------------	-------------------------

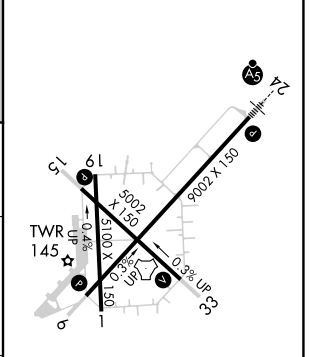


NE-2, 22 FEB 2024 to 21 MAR 2024

NE-2, 22 FEB 2024 to 21 MAR 2024



ELEV 66	TDZE 57
----------------	----------------



CATEGORY	A	B	C	D
S-6		420-1	363 (400-1)	
CIRCLING	600-1 534 (600-1)	620-1 554 (600-1)	700-1 3/4 634 (700-1 3/4)	740-2 1/4 674 (700-2 1/4)

HIRL Rwy 6-24 **Ⓛ**
MIRL Rwy 15-33 **Ⓛ**
REIL Rws 6, 15, and 33 **Ⓛ**