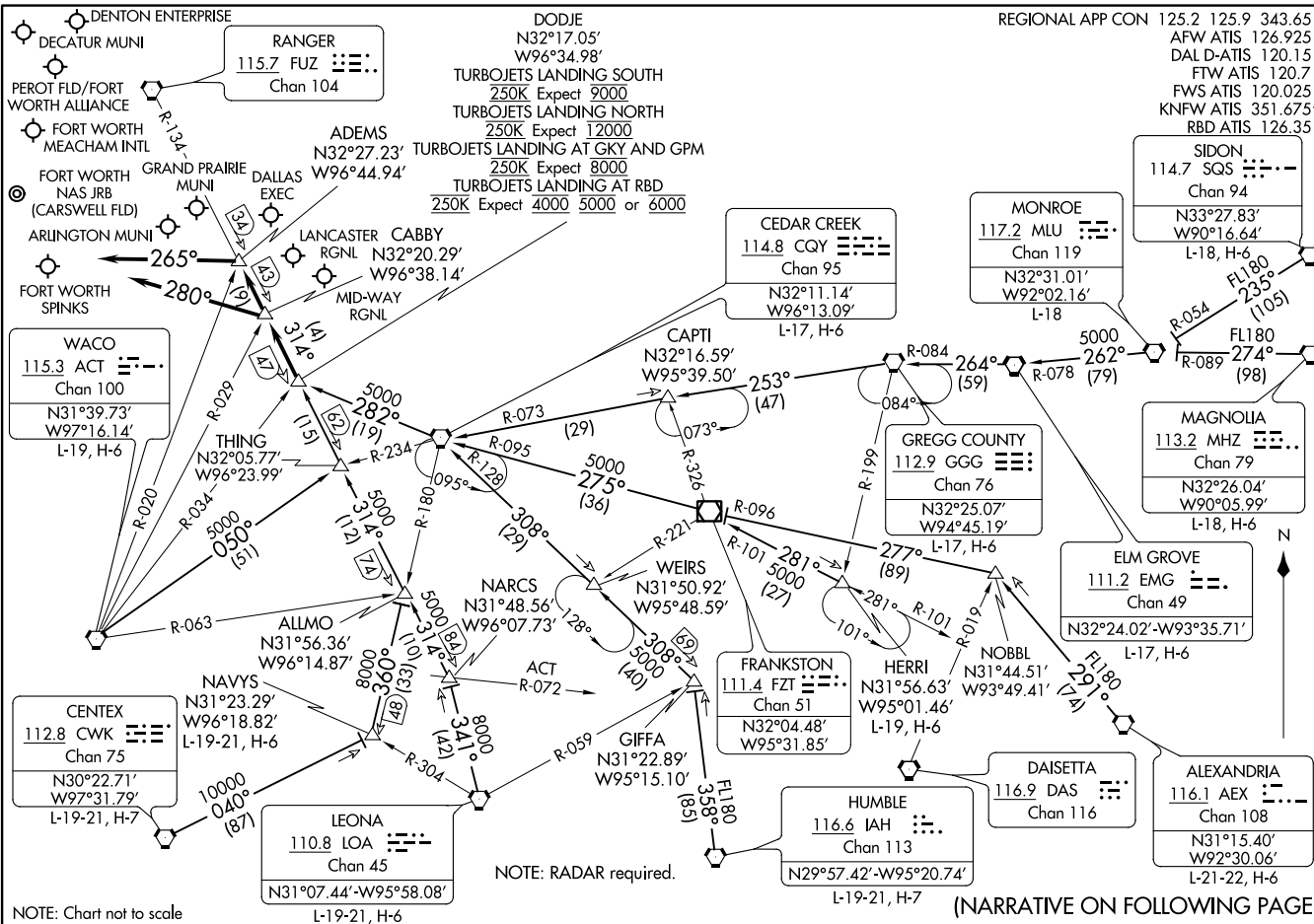


REGIONAL APP CON 125.2 125.9 343.65  
 AFW ATIS 126.925  
 DAL D-ATIS 120.15  
 FTW ATIS 120.7  
 FWS ATIS 120.025  
 KNFW ATIS 351.675\*  
 RBD ATIS 126.35

(DODJIE:DODJIE6) 23054  
**DODJIE SIX ARRIVAL**

AL-6918 (FAA)

DALLAS-FORT WORTH, TEXAS



**DODJIE SIX ARRIVAL**  
 (DODJIE:DODJIE6) 21MAY20

DALLAS-FORT WORTH, TEXAS

ARRIVAL ROUTE DESCRIPTION

ALEXANDRIA TRANSITION (AEX.DODJE6): From over AEX VORTAC on AEX R-291 to NOBBL, then on FZT R-096 to FZT VOR/DME, then on FZT R-275 and CQY R-095 to CQY VORTAC, then on CQY R-282 to DODJE. Thence . . . .

CEDAR CREEK TRANSITION (CGY.DODJE6): From over CQY VORTAC on CQY R-282 to DODJE. Thence. . . .

CENTEX TRANSITION (CWK.DODJE6): From over CWK VORTAC on CWK R-040 to NAVYS, then on CQY R-180 to ALLMO, then on FUZ R-134 to DODJE. Thence . . . .

ELM GROVE TRANSITION (EMG.DODJE6): From over EMG VORTAC on EMG R-264 and GGG R-084 to GGG VORTAC, then on GGG R-253 and CQY R-073 to CAPTI, then on CQY R-073 to CQY VORTAC, then on CQY R-282 to DODJE. Thence . . . .

GREGG COUNTY TRANSITION (GGG.DODJE6): From over GGG VORTAC on GGG R-253 and CQY R-073 to CAPTI, then on CQY R-073 to CQY VORTAC, then on CQY R-282 to DODJE. Thence . . . .

HERRI TRANSITION (HERRI.DODJE6): From over HERRI on FZT R-101 to FZT VOR/DME, then on FZT R-275 and CQY R-095 to CQY VORTAC, then on CQY R-282 to DODJE. Thence . . . .

HUMBLE TRANSITION (IAH.DODJE6): From over IAH VORTAC on IAH R-358 to GIFFA, then on CQY R-128 to CQY VORTAC, then on CQY R-282 to DODJE. Thence . . . .

LEONA TRANSITION (LOA.DODJE6): From over LOA VORTAC on LOA R-341 to NARCS, then on FUZ R-134 to DODJE. Thence . . . .

MAGNOLIA TRANSITION (MHZ.DODJE6): From over MHZ VORTAC on MHZ R-274 and MLU R-089 to MLU VORTAC, then on MLU R-262 and EMG R-078 to EMG VORTAC, then on EMG R-264 and GGG R-084 to GGG VORTAC, then on GGG R-253 and CQY R-073 to CAPTI, then on CQY R-073 to CQY VORTAC, then on CQY R-282 to DODJE. Thence . . . .

MONROE TRANSITION (MLU.DODJE6): From over MLU VORTAC on MLU R-262 and EMG R-078 to EMG VORTAC, then on EMG R-264 and GGG R-084 to GGG VORTAC, then on GGG R-253 and CQY R-073 to CAPTI, then on CQY R-073 to CQY VORTAC, then on CQY R-282 to DODJE. Thence . . . .

NAVYS TRANSITION (NAVYS.DODJE6): From over NAVYS on CQY R-180 to ALLMO, then on FUZ R-134 to DODJE. Thence . . . .

SIDON TRANSITION (SQS.DODJE6): From over SQS VORTAC on SQS R-235 and MLU R-054 to MLU VORTAC, then on MLU R-262 and EMG R-078 to EMG VORTAC, then on EMG R-264 and GGG R-084 to GGG VORTAC, then on GGG R-253 and CQY R-073 to CAPTI, then on CQY R-073 to CQY VORTAC, then on CQY R-282 to DODJE. Thence . . . .

WACO TRANSITION (ACT.DODJE6): From over ACT VORTAC on ACT R-050 and CQY R-234 to THING, then on FUZ R-134 to DODJE. Thence . . . .

. . . . from over DODJE on FUZ R-134 to CABBYP or ADEMS (when directed by ATC).  
Depart CABBYP heading 280°. Expect RADAR vectors to final approach course.  
Depart ADEMS heading 265°. Expect RADAR vectors to final approach course.

SC-2, 22 FEB 2024 to 21 MAR 2024

SC-2, 22 FEB 2024 to 21 MAR 2024

LIKES THREE ARRIVAL (RNAV)  
(SLUGG.LIKES3) 26MARI6

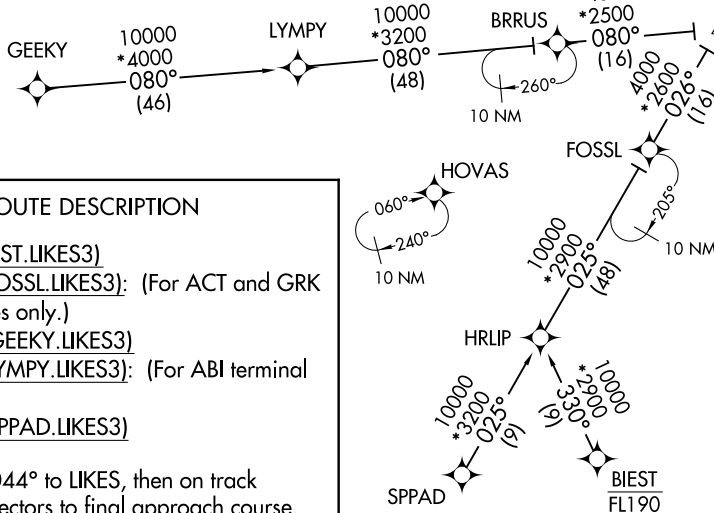
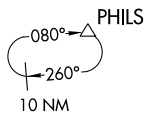
LIKES THREE ARRIVAL (RNAV)  
(SLUGG.LIKES3) 23222

AL6918 (FAA)

FORT WORTH, TEXAS

REGIONAL APP CON  
135.975 125.8 257.95  
AFW ATIS  
126.925  
FTW ATIS  
120.7  
KNFW ATIS\*  
351.675

NOTE: RADAR required.  
NOTE: RNAV 1.  
NOTE: DME/DME/IRU or GPS required.



SLUGG  
VERTICAL NAVIGATION  
PLANNING INFORMATION  
TURBOJET:  
When DFW is in south flow  
Expect 8000  
When DFW is in north flow  
Expect 6000  
PROPS:  
Expect 5000

ARRIVAL ROUTE DESCRIPTION

- BIEST TRANSITION (BIEST.LIKES3)
- FOSSL TRANSITION (FOSSL.LIKES3): (For ACT and GRK terminal area departures only.)
- GEEKY TRANSITION (GEEKY.LIKES3)
- LYMPY TRANSITION (LYMPY.LIKES3): (For ABI terminal area departures only.)
- SPPAD TRANSITION (SPPAD.LIKES3)

From SLUGG on track 044° to LIKES, then on track 044°. Expect RADAR vectors to final approach course.

NOTE: Chart not to scale.

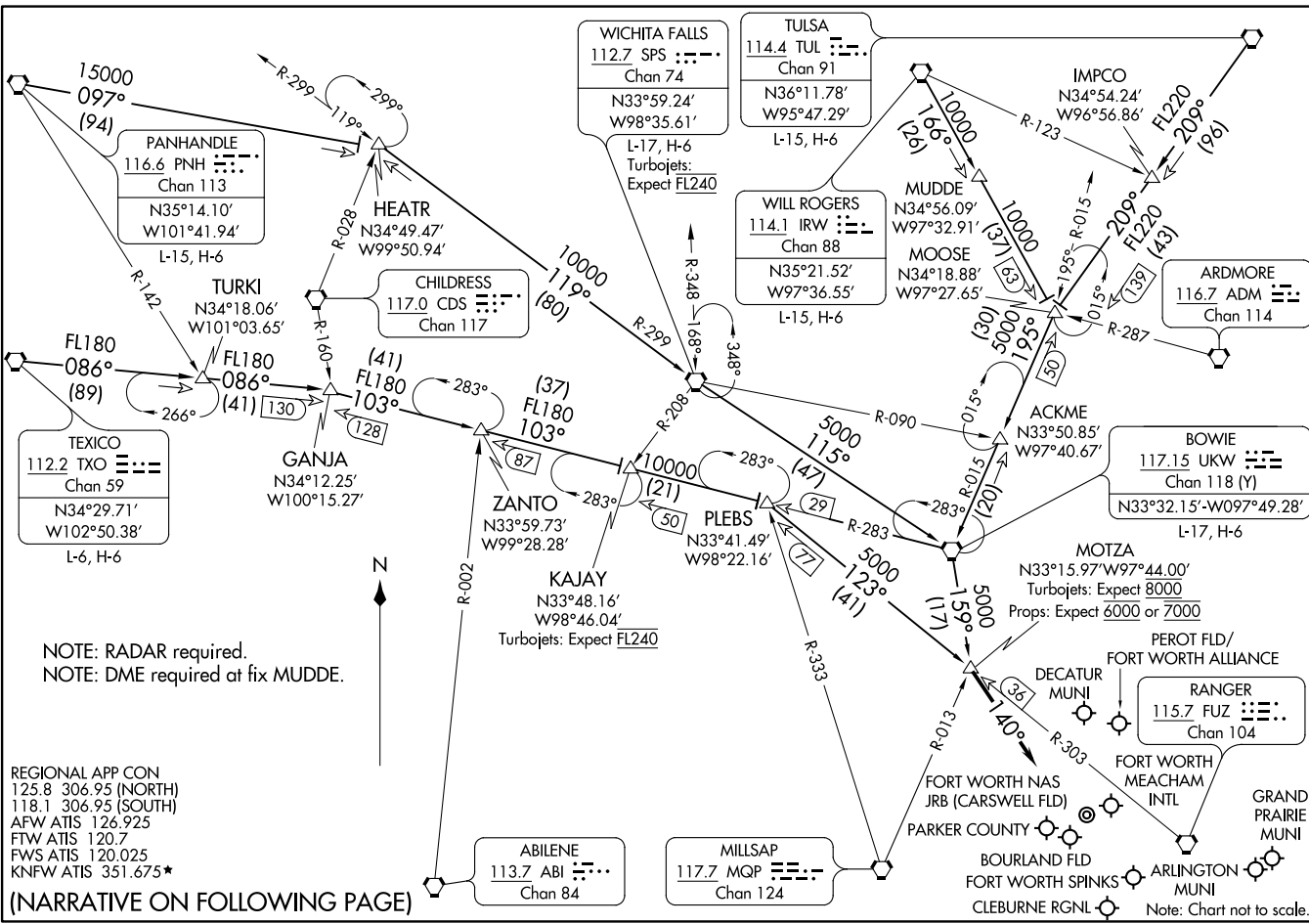


FORT WORTH, TEXAS

MOTZA ONE ARRIVAL  
(MOTZA,MOTZA1) 17JUN21

MOTZA ONE ARRIVAL  
(MOTZA,MOTZA1) 22Z251

AL-6918 (FAA)



(NARRATIVE ON FOLLOWING PAGE)

FORT WORTH, TEXAS

FORT WORTH, TEXAS

ARRIVAL ROUTE DESCRIPTION

BOWIE TRANSITION (UKW.MOTZA1): From over UKW VORTAC on UKW R-159 to MOTZA. Thence . . . .

MUDDE TRANSITION (MUDDE.MOTZA1): From over MUDDE on IRW R-166 to MOOSE, then on UKW R-015 to UKW VORTAC, then on UKW R-159 to MOTZA. Thence . . . .

PANHANDLE TRANSITION (PNH.MOTZA1): From over PNH VORTAC on PNH R-097 to HEATR, then on SPS R-299 to SPS VORTAC, then on SPS R-115 and UKW R-299 to UKW VORTAC, then on UKW R-159 to MOTZA. Thence . . . .

TEXICO TRANSITION (TXO.MOTZA1): From over TXO VORTAC on TXO R-086 to GANJA, then on UKW R-283 to PLEBS, then on FUZ R-303 to MOTZA. Thence . . . .

TULSA TRANSITION (TUL.MOTZA1): From over TUL VORTAC on TUL R-209 to MOOSE, then on UKW R-015 to UKW VORTAC, then on UKW R-159 to MOTZA. Thence . . . .

TURKI TRANSITION (TURKI.MOTZA1): From over TURKI on TXO R-086 to GANJA, then on UKW R-283 to PLEBS, then on FUZ R-303 to MOTZA. Thence . . . .

WICHITA FALLS TRANSITION (SPS.MOTZA1): From over SPS VORTAC on SPS R-115 and UKW R-299 to UKW VORTAC, then on UKW R-159 to MOTZA. Thence . . . .

WILL ROGERS TRANSITION (IRW.MOTZA1): From over IRW VORTAC on IRW R-166 to MOOSE, then on UKW R-015 to UKW VORTAC, then on UKW R-159 to MOTZA. Thence . . . .

. . . . From over MOTZA heading 140° for vectors to final approach course.

SC-2, 22 FEB 2024 to 21 MAR 2024

SC-2, 22 FEB 2024 to 21 MAR 2024

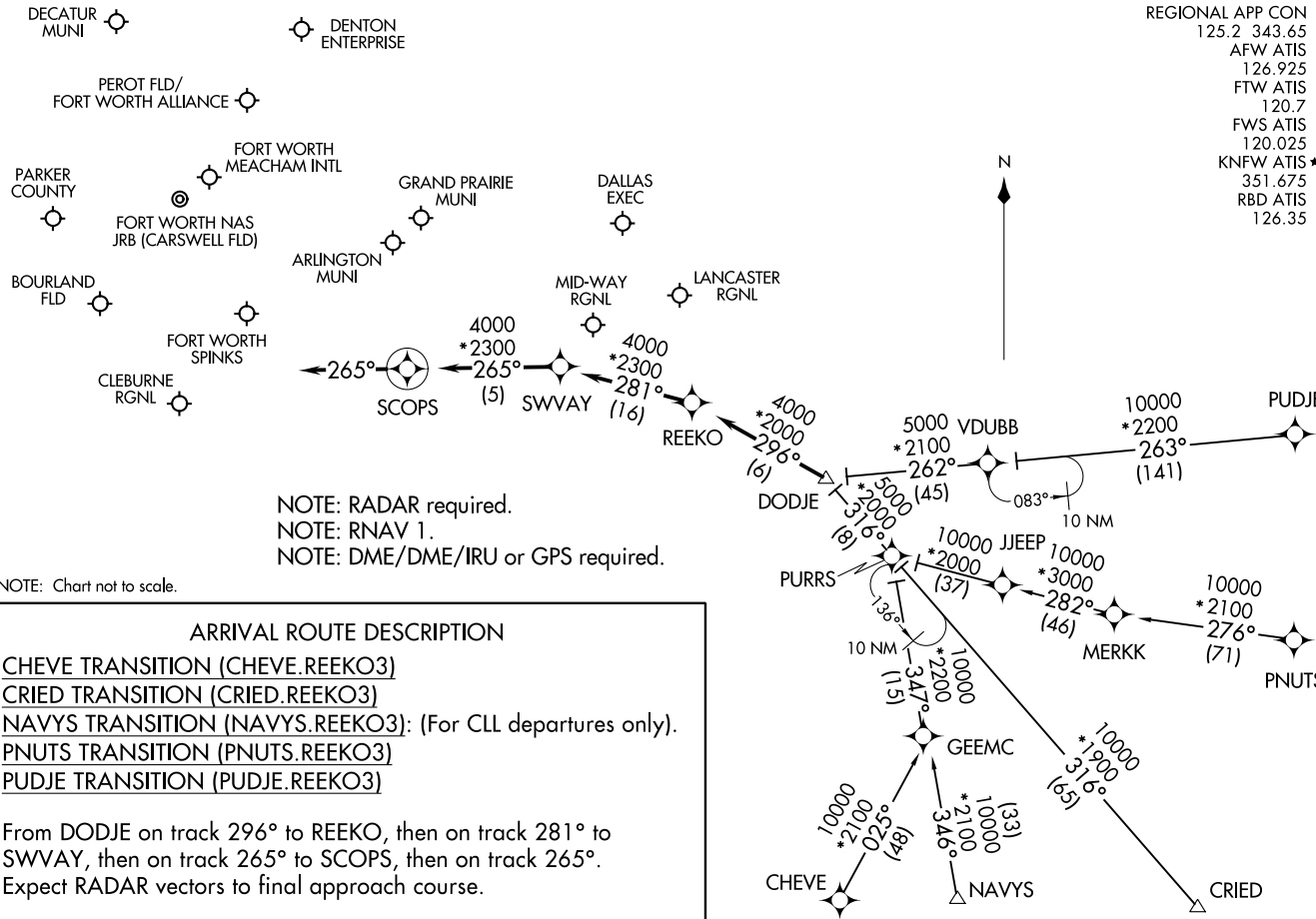
REEKO THREE ARRIVAL (RNAV)  
(DODJE.REEK03) 26MAY16

REEKO THREE ARRIVAL (RNAV)  
(DODJE.REEK03) 23Z22

AL-6918 (FAA)

FORT WORTH, TEXAS

REGIONAL APP CON	125.2	343.65
AFW ATIS	126.925	
FTW ATIS	120.7	
FWS ATIS	120.025	
KNFW ATIS*	351.675	
RBD ATIS	126.35	



NOTE: RADAR required.  
 NOTE: RNAV 1.  
 NOTE: DME/DME/IRU or GPS required.

NOTE: Chart not to scale.

ARRIVAL ROUTE DESCRIPTION

- CHEVE TRANSITION (CHEVE.REEK03)
- CRIED TRANSITION (CRIED.REEK03)
- NAVYS TRANSITION (NAVYS.REEK03): (For CLL departures only).
- PNUTS TRANSITION (PNUTS.REEK03)
- PUDJE TRANSITION (PUDJE.REEK03)

From DODJE on track 296° to REEKO, then on track 281° to SWVAY, then on track 265° to SCOP, then on track 265°.  
 Expect RADAR vectors to final approach course.

FORT WORTH, TEXAS

SASIE SEVEN ARRIVAL  
(SASIE: SASIE7) 29DEC22

(SASIE: SASIE7) 22363  
SASIE SEVEN ARRIVAL

AL-6918 (FAA)

DALLAS-FORT WORTH, TEXAS

REGIONAL APP CON  
124.3 282.275  
ADS ATIS  
133.4  
AFW ATIS  
126.925  
FTW ATIS  
120.7  
FWS ATIS  
120.025  
KNFW ATIS\*  
351.675

ARDMORE  
116.7 ADM  
Chan 114  
N34°12.70'  
W97°10.09'  
L-17, H-6

TULSA  
114.4 TUL  
Chan 91  
N36°11.78'  
W95°47.29'  
L-15, H-6

FORT SMITH  
110.4 FSM  
Chan 41  
N35°23.30'-W94°16.29'  
L-16, H-6

LITTLE ROCK  
113.9 LIT  
Chan 86  
N34°40.66'-W92°10.83'  
L-18, H-6

RICH MOUNTAIN  
113.5 PGO  
Chan 82

MEEOW  
N34°19.09'  
W93°31.42'

ROBEY  
N33°42.02'  
W95°41.34'

GREGG COUNTY  
112.9 GGG  
Chan 76

TEXARKANA  
116.3 TXK  
Chan 110  
N33°30.83'  
W94°04.39'  
L-17, H-6

EL DORADO  
115.5 ELD  
Chan 102

PARIS  
113.6 PRX  
Chan 83  
N33°32.54'  
W95°26.90'  
L-17

MONTE  
N33°32.41'  
W95°53.71'

BONHAM  
114.6 BYP  
Chan 93  
N33°32.25'  
W96°14.05'  
L-17, H-6

RANGER  
115.7 FUZ  
Chan 104

FORT WORTH MEACHAM INTL

FORT WORTH NAS JBR (CARSWELL FLD)

PARKER COUNTY

ARLINGTON MUNI

BOURLAND FLD

FORT WORTH SPINKS

CLEBURNE RGNL

WEST SATELLITE TURBOJETS  
LANDING NORTH Expect 10000  
WEST SATELLITE TURBOJETS  
LANDING SOUTH Expect 11000  
LANDING ADS:  
TURBOJETS Expect 6000  
PROPS Expect 5000 or 6000

DENTON ENTERPRISE

DECATUR MUNI

PEROT FLD/FORT WORTH ALLIANCE

NOTE: DME required for fixes ROBEY and MONTE.  
NOTE: RADAR required.  
NOTE: ATC assigned only for aircraft landing ADS.

(NARRATIVE ON FOLLOWING PAGE)

NOTE: Chart not to scale.

DALLAS-FORT WORTH, TEXAS

ARRIVAL ROUTE DESCRIPTION

ARDMORE TRANSITION (ADM.SASIE7): From over ADM VORTAC on ADM R-125 and BYP R-305 to CAINE, then on FUZ R-035 to SASIE. Thence . . . .

BONHAM TRANSITION (BYP.SASIE7): From over BYP VORTAC on BYP R-248 to SASIE. Thence . . . .

CAINE TRANSITION (CAINE.SASIE7): From over CAINE on FUZ VORTAC R-035 to SASIE. Thence . . . .

FORT SMITH TRANSITION (FSM.SASIE7): From over FSM VORTAC on FSM R-215 to MAMEE, then on BYP R-035 to BYP VORTAC, then on BYP R-248 to SASIE. Thence . . . .

LITTLE ROCK TRANSITION (LIT.SASIE7): From over LIT VORTAC on LIT R-247 to MEEOW, then on LIT R-247 and BYP R-064 to GLOVE, then on BYP R-064 to BYP VORTAC, then on BYP R-248 to SASIE. Thence . . . .

PARIS TRANSITION (PRX.SASIE7): From over PRX VOR/DME on PRX R-263 and BYP R-083 to MONTE, then on BYP R-083 to BYP VORTAC, then on BYP R-248 to SASIE. Thence . . . .

TEXARKANA TRANSITION (TXK.SASIE7): From over TXK VORTAC on TXK R-286 to GLOVE, then on BYP R-064 to BYP VORTAC, then on BYP R-248 to SASIE. Thence . . . .

TULSA TRANSITION (TUL.SASIE7): From over TUL VORTAC on TUL R-157 to MAMEE, then on BYP R-035 to BYP VORTAC, then on BYP R-248 to SASIE. Thence . . . .

. . . . from SASIE, then on heading 255° or as assigned by ATC. Expect RADAR vectors to final approach course.

SC-2, 22 FEB 2024 to 21 MAR 2024

SC-2, 22 FEB 2024 to 21 MAR 2024



# TRUK TWO ARRIVAL (RNAV)

DALLAS-FORT WORTH, TEXAS

REGIONAL APP CON  
 118.1 306.95  
 AFW ATIS  
 126.925  
 FTW ATIS  
 120.7  
 FWS ATIS  
 120.025  
 KNFW ATIS ★  
 351.675

NOTE: RADAR required.  
 NOTE: RNAV 1.  
 NOTE: DME/DME/IRU or GPS required.

SASIE  
 VERTICAL NAVIGATION  
 PLANNING INFORMATION

TURBOJETS NORTH FLOW:

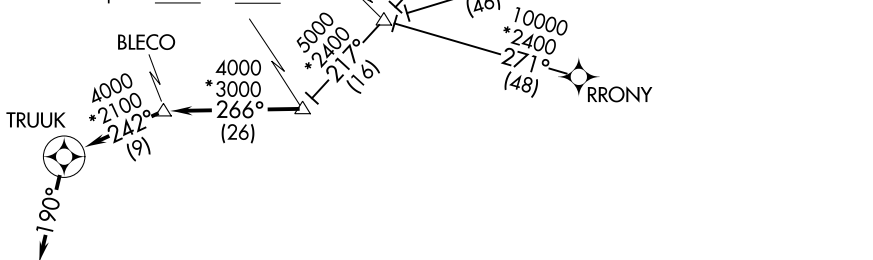
Expect 10000

TURBOJETS SOUTH FLOW:

Expect 11000

PROPS:

Expect 5000 or 6000



## ARRIVAL ROUTE DESCRIPTION

AXxee TRANSITION (AXxee.TRUK2): (For aircraft filing FL230 and below).

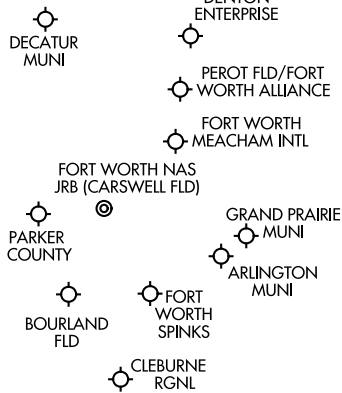
HITUG TRANSITION (HITUG.TRUK2)

PONY TRANSITION (PONY.TRUK2)

RRNET TRANSITION (RRNET.TRUK2)

RRONY TRANSITION (RRONY.TRUK2): (For aircraft filing FL230 and below).

From SASIE on track 266° to BLECO, then on track 242° to TRUK, then on track 190°. Expect RADAR vectors to final approach course.



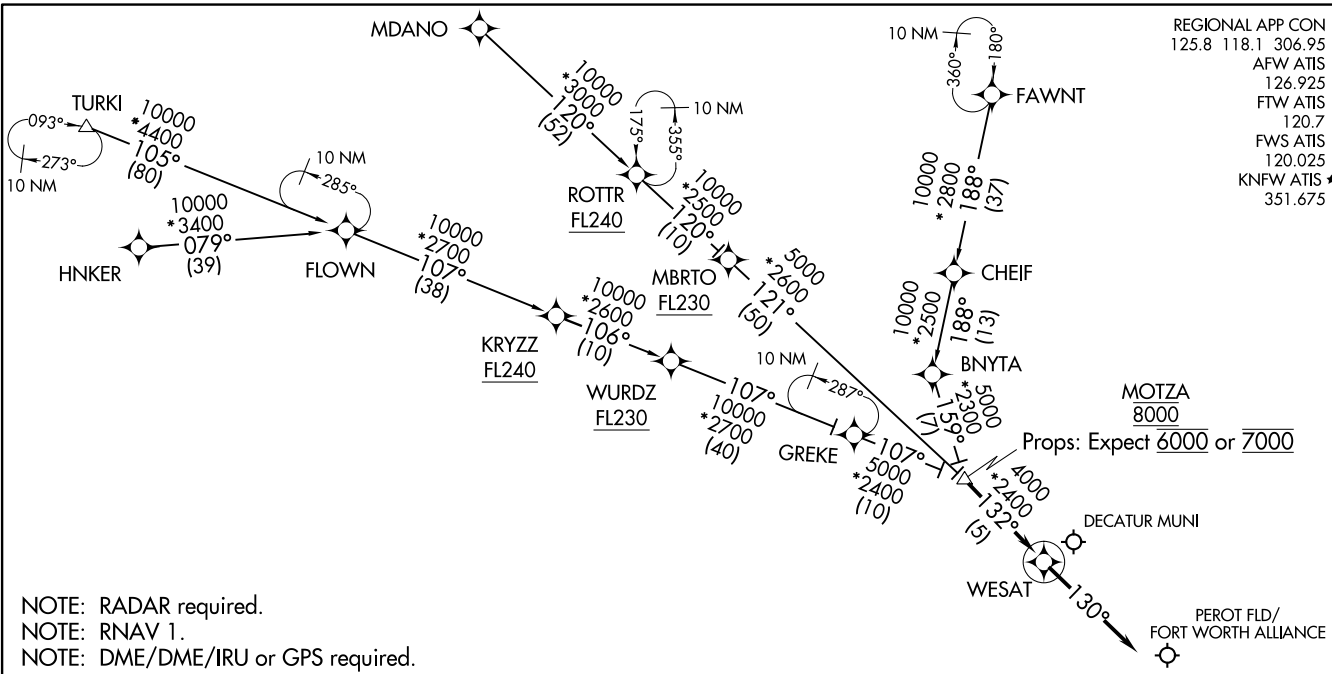
NOTE: Chart not to scale.

# TRUK TWO ARRIVAL (RNAV)

DALLAS-FORT WORTH, TEXAS

WESAT TWO ARRIVAL (RNAV)  
(MOTZA.WESAT2) 25JUN15

(MOTZA.WESAT2) 23222  
WESAT TWO ARRIVAL (RNAV)



REGIONAL APP CON  
125.8 118.1 306.95  
AFW ATIS  
126.925  
FTW ATIS  
120.7  
FWS ATIS  
120.025  
KNFW ATIS \*  
351.675

NOTE: RADAR required.  
NOTE: RNAV 1.  
NOTE: DME/DME/IRU or GPS required.

**ARRIVAL ROUTE DESCRIPTION**

FAWNT TRANSITION (FAWNT.WESAT2)  
HNKER TRANSITION (HNKER.WESAT2)  
MDANO TRANSITION (MDANO.WESAT2)  
TURKI TRANSITION (TURKI.WESAT2)

From MOTZA on track 132° to WESAT, then on track 130°.  
Expect RADAR vectors to final approach course.

N  
↑

NOTE: Chart not to scale.

DALLAS-FORT WORTH, TEXAS

DALLAS-FORT WORTH, TEXAS