

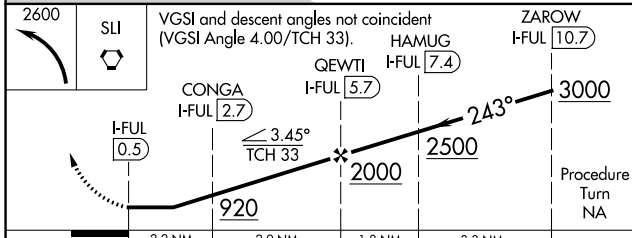
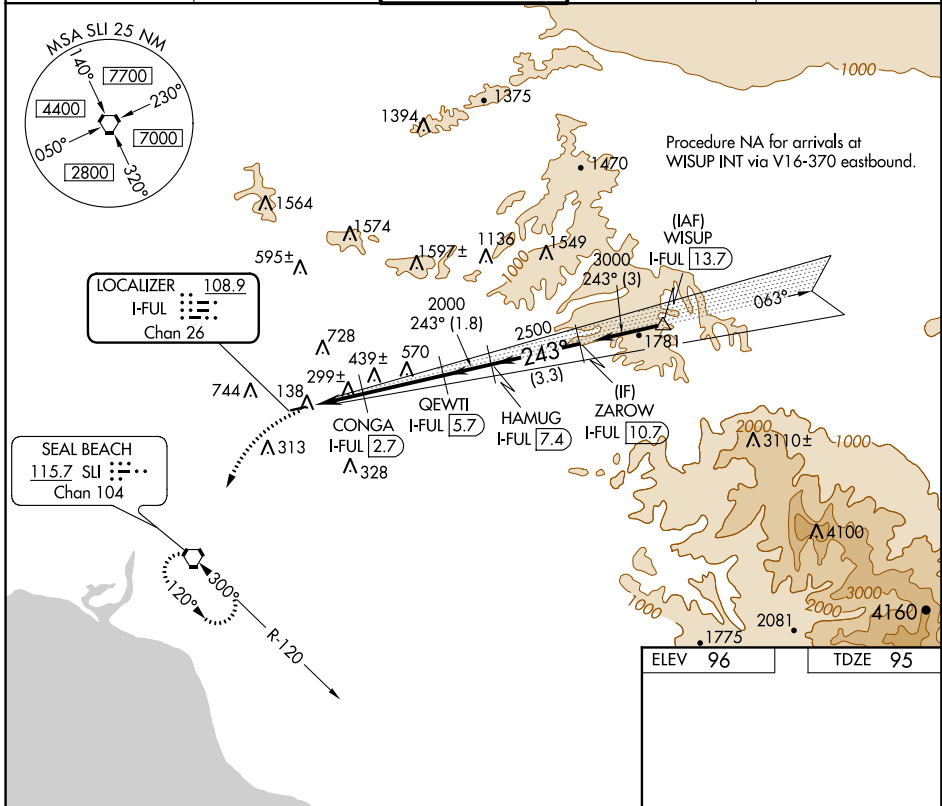
LOC/DME I-FUL 108.9 Chan 26	APP CRS 243°	Rwy Idg 2868 TDZE 95 Apt Elev 96
---	------------------------	---

LOC/DME RWY 24

FULLERTON MUNI (F'UL)

<p>▽ Inoperative table does not apply. ▲ Night landing: Rwy 6 NA. Helicopter visibility reduction below 1 SM NA.</p>	<p>MISSED APPROACH: Climbing left turn to 2600 direct SUI VORTAC and hold.</p>
--	--

<p>ATIS 125.05</p>	<p>SOCAL APP CON 125.35 316.125</p>	<p>FULLERTON TOWER* 119.1 (CTAF) 0</p>	<p>GND CON 121.8</p>	<p>UNICOM 122.95</p>
-------------------------------	--	--	---------------------------------	---------------------------------



ELEV 96	TDZE 95
---------	---------

118

3121 X 75

0.3% UP

TWR 158

243° 5.1 NM from FAF

MIRL Rwy 6-24

REIL Rws 6 and 24

RLS Rwy 24

CATEGORY	A	B	C	D
S-24	560-1	465 (500-1)		NA
CIRCLING	760-1 664 (700-1)	840-1¼ 744 (800-1¼)		NA

SW-3, 05 DEC 2019 to 02 JAN 2020

SW-3, 05 DEC 2019 to 02 JAN 2020

RNAV (GPS) RWY 24

FULLERTON MUNI (F'UL)

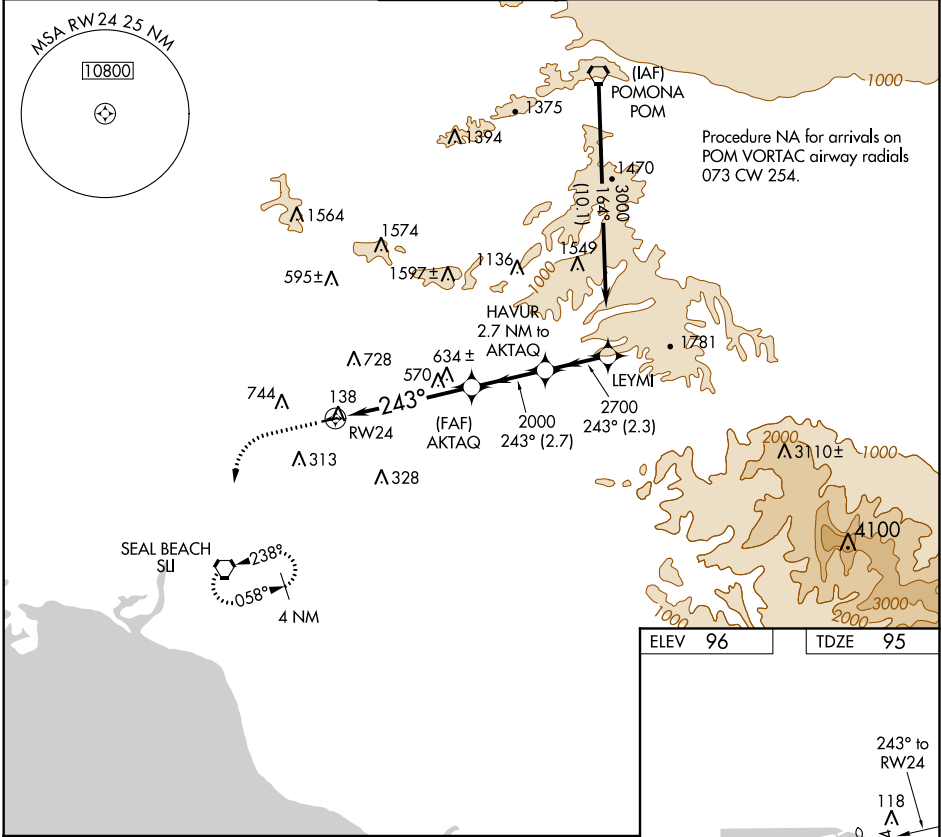
APP CRS	Rwy Idg	2868
243°	TDZE	95
	Apt Elev	96

RNP APCH.

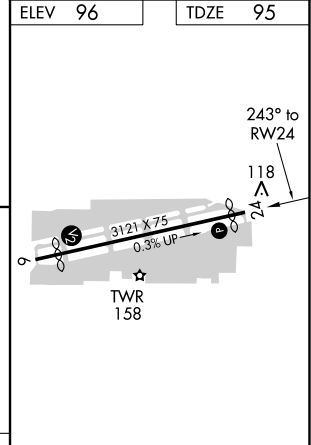
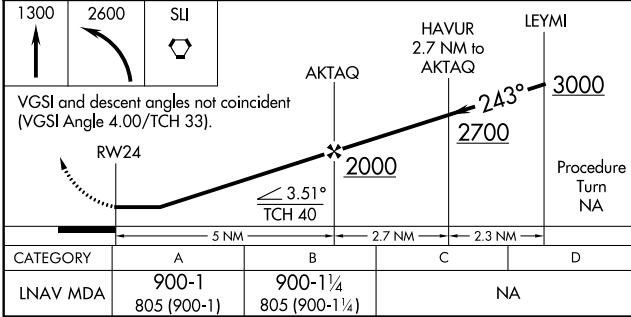
▼ Inoperative table does not apply.
▲ NA Helicopter visibility reduction below 1 SM NA.

MISSED APPROACH: Climb to 1300, then climbing left turn to 2600 direct SLI VORTAC and hold.

ATIS 125.05	SOCAL APP CON 125.35 316.125	FULLERTON TOWER* 119.1 (CTAF) 0	GND CON 121.8	UNICOM 122.95
-----------------------	--	--	-------------------------	-------------------------



ELEV 96	TDZE 95
---------	---------



CATEGORY	A	B	C	D
LNAV MDA	900-1 805 (900-1)	900-1¼ 805 (900-1¼)		NA

MIRL Rwy 6-24
 REIL Rws 6 and 24
 RLSS Rwy 24

SW-3, 05 DEC 2019 to 02 JAN 2020

SW-3, 05 DEC 2019 to 02 JAN 2020

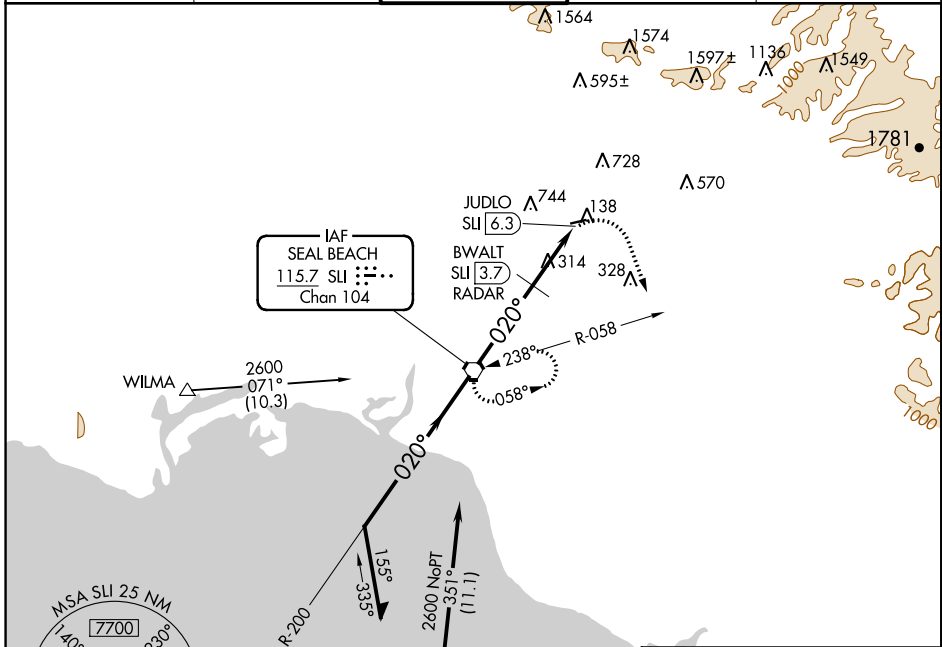
VORTAC SLI 115.7 Chan 104	APP CRS 020°	Rwy Idg TDZE Apt Elev	N/A N/A 96
---	------------------------	-----------------------------	---------------------------------------

VOR-A
FULLERTON MUNI (F'UL)

▽ Maximum entry altitude 6000.
▲ Night landing: Rwy 6 NA.
Helicopter visibility reduction below 1 SM NA.

MISSED APPROACH: Climbing right turn to 2600 via heading 145° and SLI R-058 to SLI VORTAC and hold.

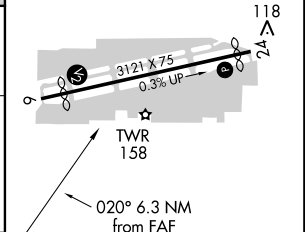
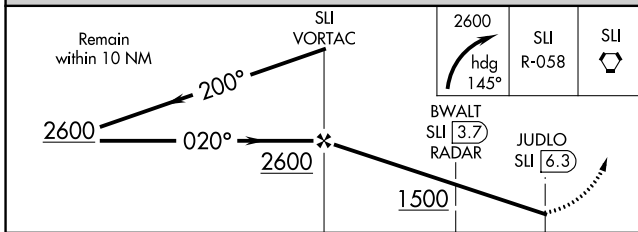
ATIS 125.05	SOCAL APP CON 125.35 316.125	FULLERTON TOWER* 119.1 (CTAF) 0	GND CON 121.8	UNICOM 122.95
-----------------------	--	---	-------------------------	-------------------------



SW-3, 05 DEC 2019 to 02 JAN 2020

SW-3, 05 DEC 2019 to 02 JAN 2020

ELEV 96
MIRL Rwy 6-24 0
REIL Rwys 6 and 24 0
RLS Rwy 24 0



CATEGORY	A	B	C	D
CIRCLING	1500-1¼ 1404 (1500-1¼)	1500-1½ 1404 (1500-1½)	NA	
BWALT FIX MINIMUMS				
CIRCLING	760-1 664 (700-1)	840-1¼ 744 (800-1¼)	NA	

FAF to MAP 6.3 NM					
Knots	60	90	120	150	180
Min:Sec	6:18	4:12	3:09	2:31	2:06