

WAAS CH <b>45819</b> <b>W27A</b>	APP CRS <b>275°</b>	Rwy Idg TDZE Apt Elev	<b>5005</b> <b>752</b> <b>752</b>
--	------------------------	-----------------------------	---

# RNAV (GPS) RWY 27

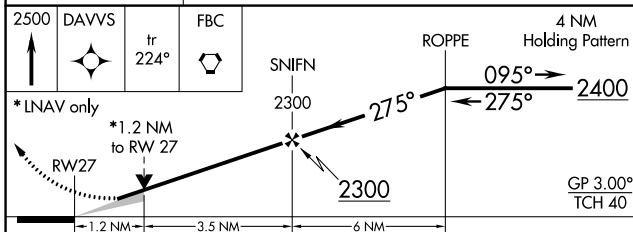
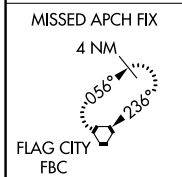
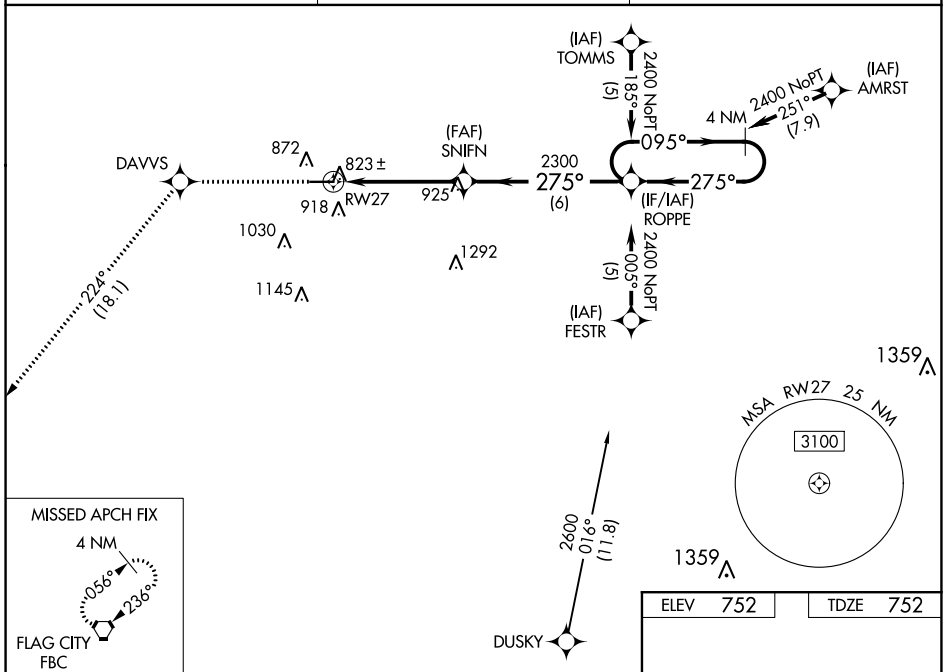
FOSTORIA METROPOLITAN (FZI)

RNP APCH.

**NA** For uncompensated Baro-VNAV systems, LNAV/VNAV NA below -16°C (4°F) or above 54°C (130°F). Baro-VNAV and VDP NA when using Findlay altimeter setting. When local altimeter setting not received, use Findlay altimeter setting and increase all DA 47 feet and all MDA 60 feet, increase LNAV/VNAV all Cats and Circling Cat C visibility ¼ mile.

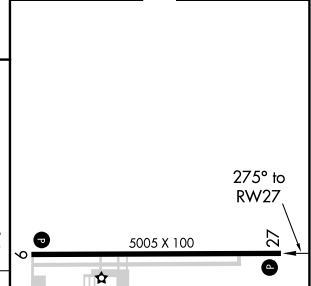
MISSED APPROACH: Climb to 2500 direct DAVVS and on track 224° to FBC VORTAC and hold.

AWOS-3 <b>124.625</b>	TOLEDO APP CON <b>126.1 307.0</b>	UNICOM <b>122.7 (CTAF) 0</b>
--------------------------	--------------------------------------	---------------------------------



ELEV 752	TDZE 752
----------	----------

CATEGORY	A	B	C	D
LPV DA	1002-1	250 (300-1)		NA
LNAV/VNAV DA	1131-1¼	379 (400-1¼)		NA
LNAV MDA	1160-1	408 (500-1)	1160-1¼ 408 (500-1¼)	NA
CIRCLING	1280-1 528 (600-1)	1320-1 568 (600-1)	1320-1½ 568 (600-1½)	NA



REIL Rwy 9 and 27 0	MIRL Rwy 9-27 0
---------------------	-----------------

EC-2, 17 JUN 2021 to 15 JUL 2021

EC-2, 17 JUN 2021 to 15 JUL 2021

WAAS CH <b>53529</b> <b>W09A</b>	APP CRS <b>095°</b>	Rwy Idg <b>5005</b> TDZE <b>752</b> Apt Elev <b>752</b>
--	------------------------	---

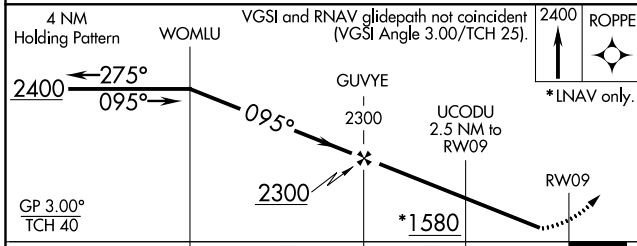
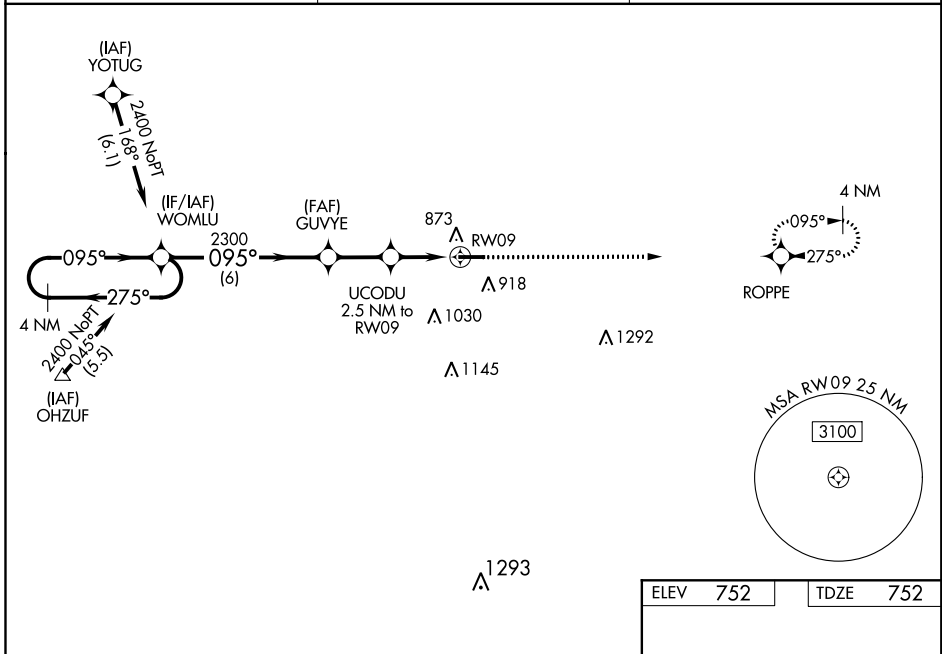
# RNAV (GPS) RWY 9

FOSTORIA METROPOLITAN (FZI)

**▼** DME/DME RNP-0.3 NA. Visibility reduction by helicopters NA. Baro-VNAV NA when using Findlay altimeter setting. For uncompensated Baro-VNAV systems, LNAV/VNAV NA below -16°C (4°F) or above 54°C (130°F). When local altimeter setting not received, use Findlay altimeter setting and increase all DA 47 feet and all MDA 60 feet, increase LPV and LNAV/VNAV all Cats visibility to 1¼ mile, increase LNAV Cat C visibility to 1⅜, increase Circling Cat C visibility to 1¾. When VGSI inop, Straight-in/Circling Rwy 9 procedure NA at night.

**MISSED APPROACH:**  
Climb to 2400 direct ROPPE and hold.

AWOS-3 <b>124.625</b>	TOLEDO APP CON <b>126.1 307.0</b>	UNICOM <b>122.7 (CTAF)</b>
--------------------------	--------------------------------------	-------------------------------



CATEGORY	A	B	C	D
LPV DA	1075-1⅞	323 (400-1⅞)		NA
LNAV/VNAV DA	1074-1⅞	322 (400-1⅞)		NA
LNAV MDA	1180-1	428 (500-1)	1180-1¼ 428 (500-1¼)	NA
CIRCLING	1280-1 528 (600-1)	1320-1 568 (600-1)	1320-1½ 568 (600-1½)	NA

ELEV 752	TDZE 752
----------	----------

Diagram of RWY 9 showing dimensions (5005 X 100) and associated lights (REIL, MIRL). The diagram shows the runway layout with REIL (Runway End Identifier Lights) and MIRL (Medium Intensity Runway Lights) for RWY 9 and RWY 27. The runway is 5005 feet long and 100 feet wide.

EC-2, 17 JUN 2021 to 15 JUL 2021

EC-2, 17 JUN 2021 to 15 JUL 2021

FOSTORIA, OHIO

AL-6133 (FAA)

20310

VORTAC FBC <b>108.2</b> Chan <b>19</b>	APP CRS <b>051°</b>	Rwy Idg TDZE Apt Elev	<b>N/A</b> <b>N/A</b> <b>752</b>
--	------------------------	-----------------------------	--

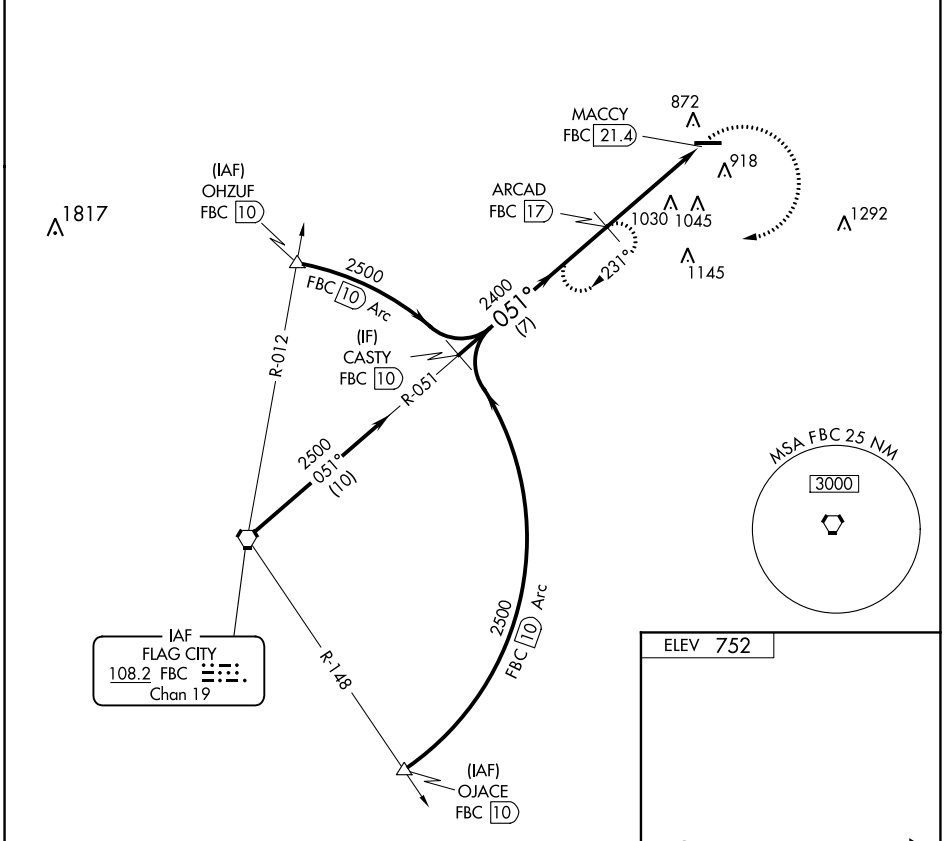
**VOR-A**  
FOSTORIA METROPOLITAN (FZI)

DME required.

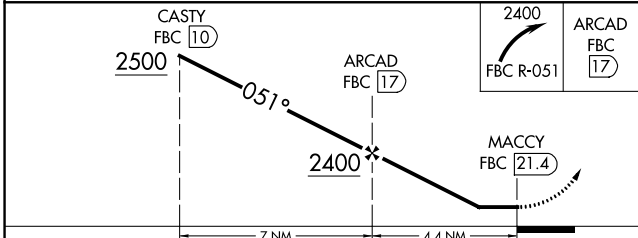
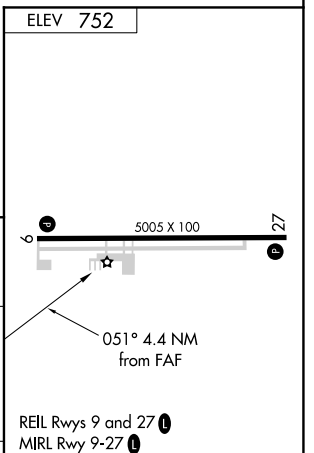
▼ When local altimeter setting not received, use Findlay altimeter setting and increase all MDA 60 feet, and increase Cat C visibility 1/4 mile.

▲ NA MISSED APPROACH: Climbing right turn to 2400 on FBC VORTAC R-051 to ARCAD/FBC 17 DME and hold.

AWOS-3 <b>124.625</b>	TOLEDO APP CON <b>126.1 307.0</b>	UNICOM <b>122.7</b> (CTAF) <b>0</b>
--------------------------	--------------------------------------	--



IAF  
FLAG CITY  
108.2 FBC Chan 19



CATEGORY	A	B	C	D	FAF to MAP 4.4 NM					
CIRCLING	1400-1	1400-1 1/4	1400-1 3/4	NA	Knots	60	90	120	150	180
	648 (700-1)	648 (700-1 1/4)	648 (700-1 3/4)		Min:Sec	4:24	2:56	2:12	1:46	1:28

FOSTORIA, OHIO  
Amdt 4C 08OCT20

41°11'N - 83°24'W

FOSTORIA METROPOLITAN (FZI)  
**VOR-A**

EC-2, 17 JUN 2021 to 15 JUL 2021

EC-2, 17 JUN 2021 to 15 JUL 2021