

WAAS CH <b>58111</b> <b>W18A</b>	APP CRS <b>178°</b>	Rwy Idg TDZE Apt Elev	<b>6000</b> <b>846</b> <b>846</b>
--	------------------------	-----------------------------	---

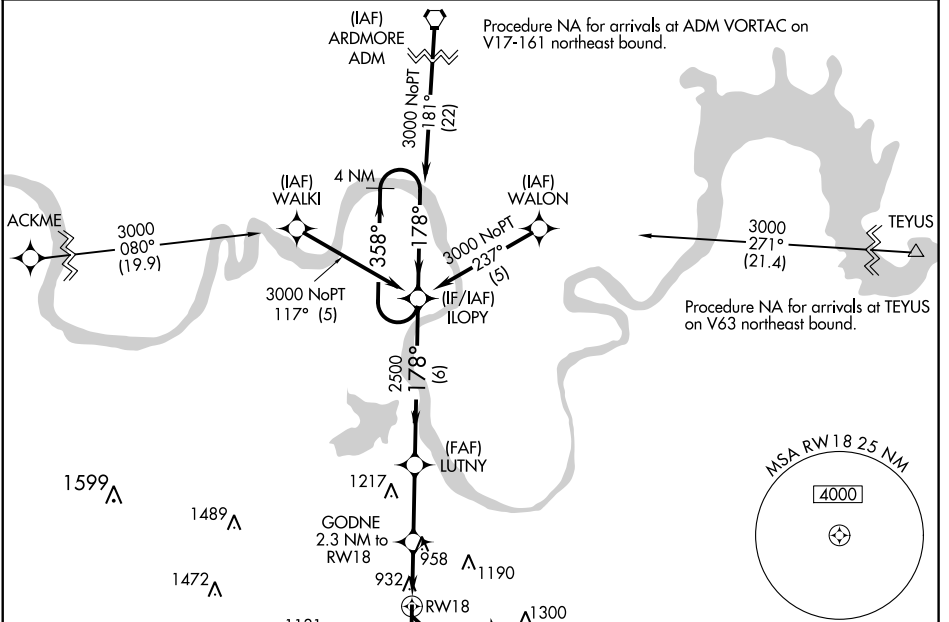
# RNAV (GPS) RWY 18

GAINESVILLE MUNI (G.L.E.)

**⚠** For uncompensated Baro-VNAV systems, LNAV/VNAV NA below -16°C (4°F) or above 54°C (130°F), DME/DME RNP-0.3 NA. Rwy 18 helicopter visibility reduction below 3/4 SM NA.

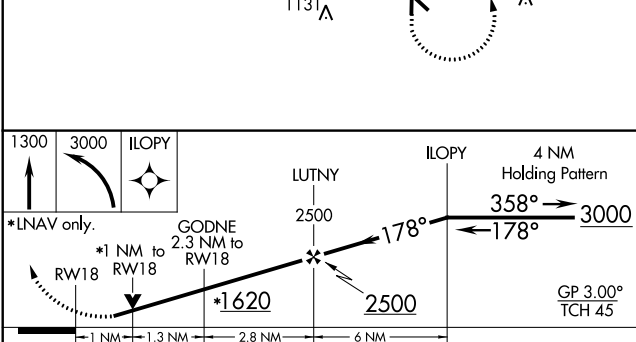
**⚠** MISSED APPROACH: Climb to 1300 then climbing left turn to 3000 direct ILOPY and hold.

AWOS-3 <b>118.375</b>	FORT WORTH CENTER <b>124.75 323.0</b>	UNICOM <b>123.0 (CTAF) 0</b>
--------------------------	--	---------------------------------



SC-2, 02 DEC 2021 to 30 DEC 2021

SC-2, 02 DEC 2021 to 30 DEC 2021



ELEV 846	TDZE 846
----------	----------

MIRL Rwy 18-36 0  
REIL Rwy 18-36

CATEGORY	A	B	C	D
LPV DA		1113-7/8	267 (300-7/8)	
LNAV/VNAV DA		1114-7/8	268 (300-7/8)	
LNAV MDA		1220-1	374 (400-1)	
<b>C</b> CIRCLING	1280-1 434 (500-1)	1320-1 474 (500-1)	1520-2 674 (700-2)	1600-2 1/2 754 (800-2 1/2)

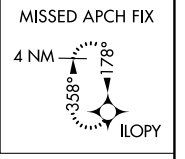
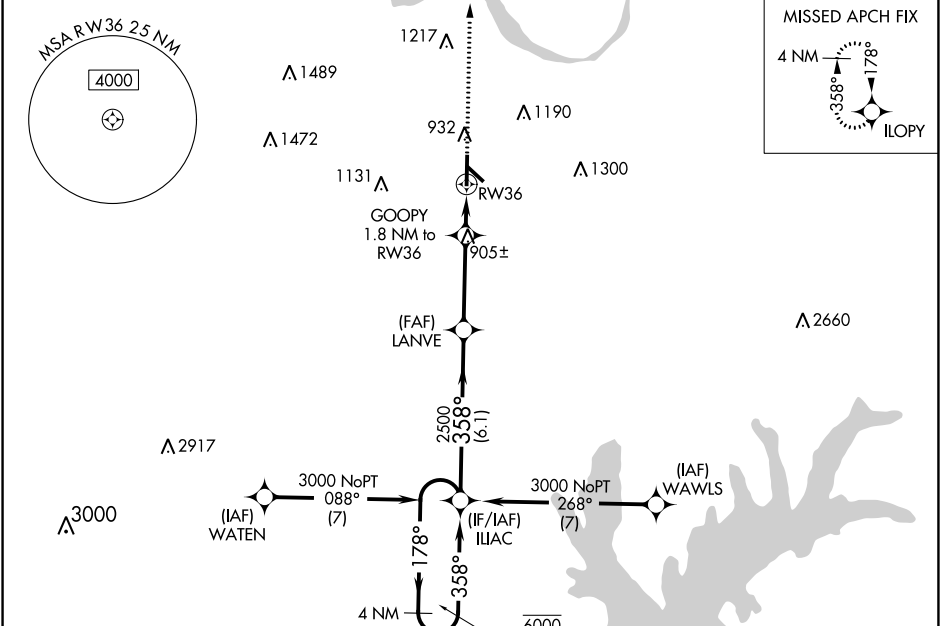
WAAS CH <b>81841</b> <b>W36A</b>	APP CRS <b>358°</b>	Rwy Idg TDZE <b>818</b> Apt Elev <b>846</b>	<b>6000</b>
--	------------------------	---	-------------

# RNAV (GPS) RWY 36

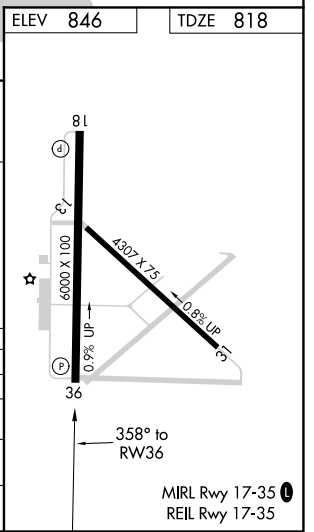
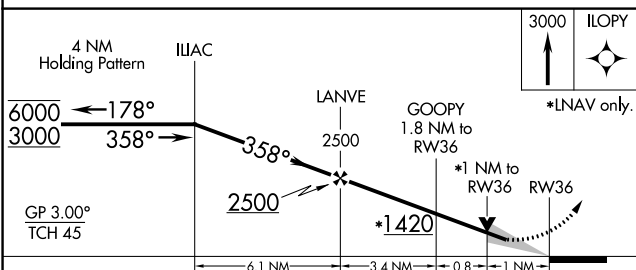
GAINESVILLE MUNI (G.L.E.)

RNP APCH.	MISSED APPROACH: Climb to 3000 direct ILOPY and hold.
-----------	---

AWOS-3 <b>118.375</b>	FORT WORTH CENTER <b>124.75 323.0</b>	UNICOM <b>123.0 (CTAF) 0</b>
--------------------------	--	---------------------------------



ELEV <b>846</b>	TDZE <b>818</b>
-----------------	-----------------



CATEGORY	A	B	C	D
LPV DA		1068-3/4	250 (300-3/4)	
LNAV/VNAV DA		1068-3/4	250 (300-3/4)	
LNAV MDA		1160-1	342 (400-1)	
<b>CIRCLING</b>	1300-1 454 (500-1)	1340-1 494 (500-1)	1520-2 674 (700-2)	1600-2 1/2 754 (800-2 1/2)

SC-2, 02 DEC 2021 to 30 DEC 2021

SC-2, 02 DEC 2021 to 30 DEC 2021

MIRL Rwy 17-35  
REIL Rwy 17-35