

WAAS CH 56308 W16A	APP CRS 158°	Rwy Idg TDZE Apt Elev	5001 1069 1069
--	------------------------	-----------------------------	---

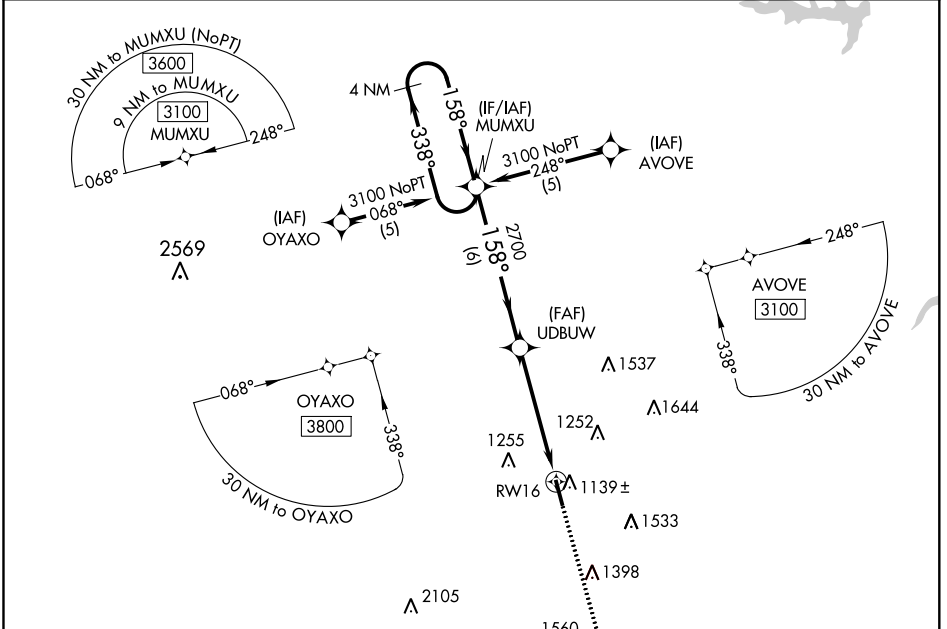
RNAV (GPS) RWY 16

GUTHRIE-EDMOND RGNL (GOK)

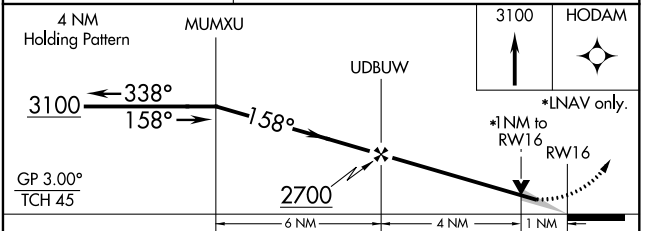
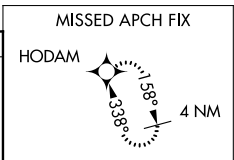
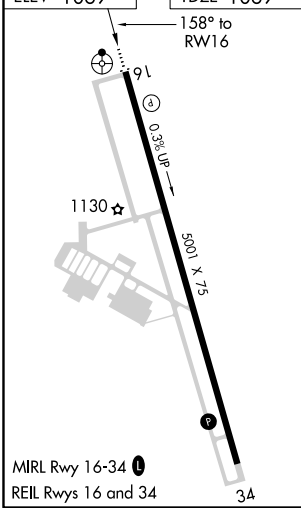
⚠ DME/DME RNP-0.3 NA. VDP NA when using Will Rogers World altimeter setting. When local altimeter setting not received, use Will Rogers World altimeter setting and increase DA/MDA 100 feet and LPV all Cats visibility ¼ mile.

ODALS MISSED APPROACH: Climb to 3100 direct HODAM and hold.

ASOS 133,975	OKE CITY APP CON 124.2 336.4	UNICOM 122.8 (CTAF)
------------------------	--	-------------------------------



ELEV 1069	TDZE 1069
-----------	-----------



CATEGORY	A	B	C	D
LPV DA	1319-1	250 (300-1)		NA
LNAV MDA	1420-1	351 (400-1)		NA
CIRCLING	1540-1	471 (500-1)		NA

SC-1, 08 OCT 2020 to 05 NOV 2020

SC-1, 08 OCT 2020 to 05 NOV 2020

WAAS CH 56607 W34A	APP CRS 338°	Rwy Idg TDZE Apt Elev	5001 1069 1069
--	------------------------	-----------------------------	---

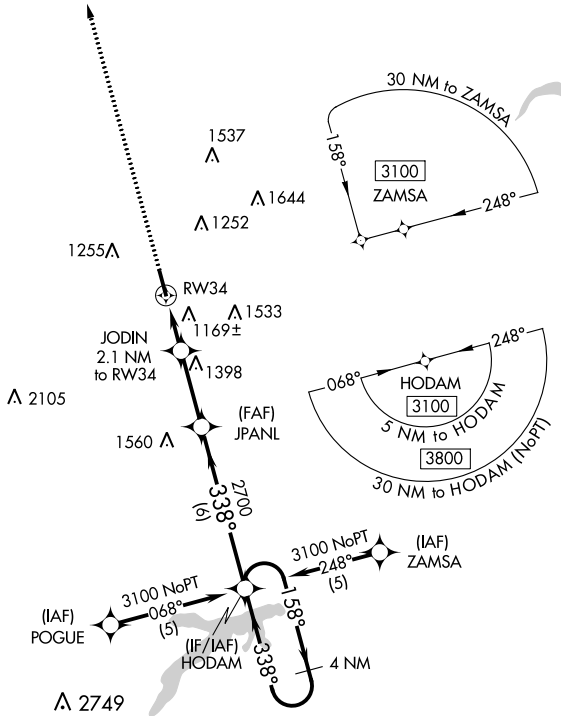
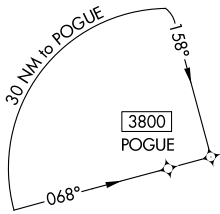
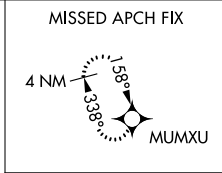
RNAV (GPS) RWY 34

GUTHRIE-EDMOND RGNL (GOK)

▽ DME/DME RNP-0.3 NA. VDP NA when using Will Rogers World altimeter setting. When local altimeter setting not received, use Will Rogers World altimeter setting and increase DA/MDA 100 feet and LPV all Cats visibility ¼ mile.

▲ MISSED APPROACH: Climb to 3100 direct MUMXU and hold.

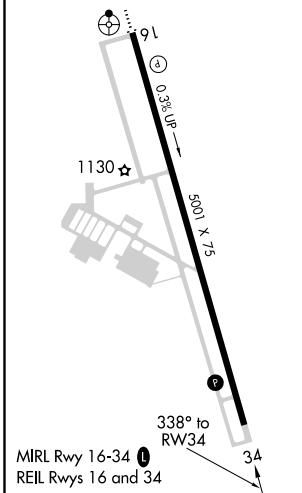
ASOS 133.975	OKE CITY APP CON 124.2 336.4	UNICOM 122.8 (CTAF) 1
------------------------	--	--



SC-1, 08 OCT 2020 to 05 NOV 2020

SC-1, 08 OCT 2020 to 05 NOV 2020

ELEV 1069	TDZE 1069
-----------	-----------



CATEGORY	A	B	C	D
LPV DA	1319-1	250 (300-1)		NA
LNAV MDA	1420-1	351 (400-1)		NA
CIRCLING	1540-1	471 (500-1)		NA