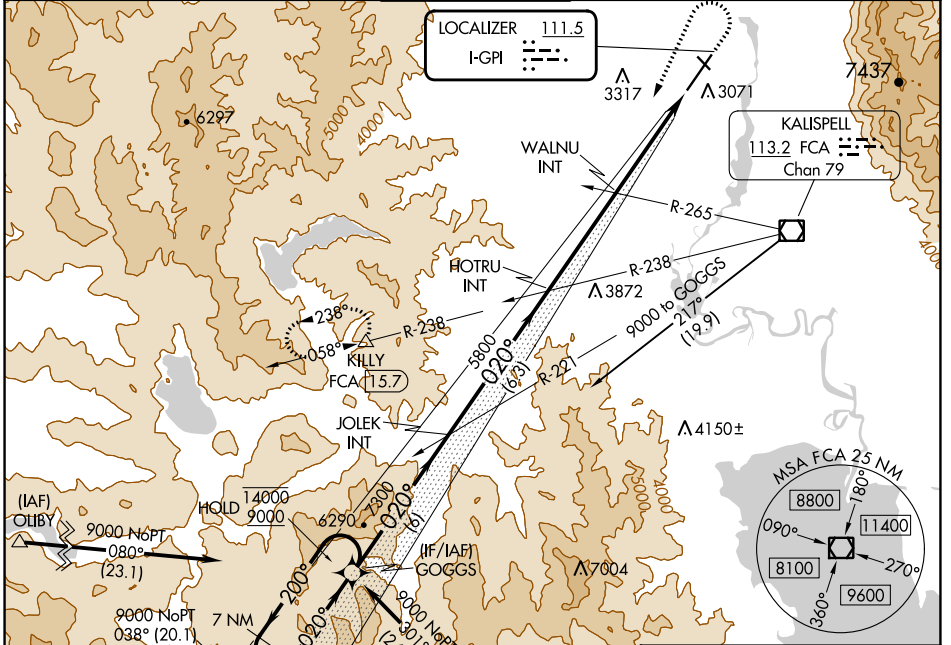


LOC I-GPI 111.5	APP CRS 020°	Rwy ldg 9007
		TDZE 2966
		Apt Elev 2977

ILS or LOC RWY 2

GLACIER PARK INTL (GPI)

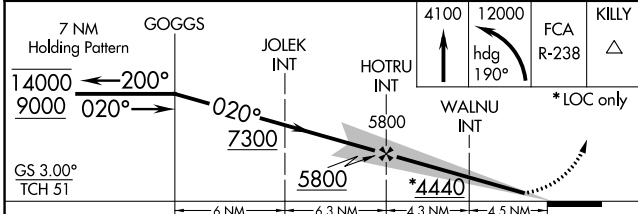
DME required. RNAV 1-GPS or RADAR required for procedure entry.		MALSR	MISSED APPROACH: Climb to 4100 then climbing left turn to 12000 on heading 190° and FCA VOR/DME R-238 to KILLY/15.7 DME and hold, continue climb-in-hold to 12000.	
Inop table does not apply to S-LOC 2 Cats C/D.				
-1.5°C				
ATIS 132.625	SALT LAKE CENTER 127.075 244.875	GLACIER TOWER* 124.55 (CTAF) 0	GND CON 121.6	UNICOM 122.95



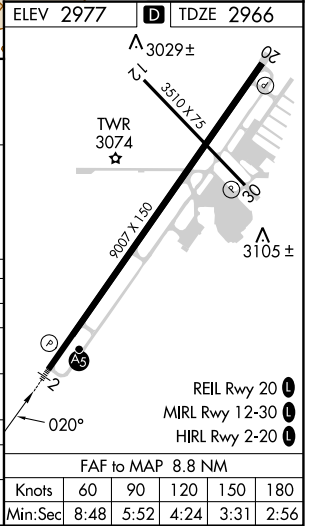
NW-1, 22 FEB 2024 to 21 MAR 2024

NW-1, 22 FEB 2024 to 21 MAR 2024

ELEV 2977	D TDZE 2966
-----------	--------------------



CATEGORY	A	B	C	D
S-ILS 2	3166-1/2 200 (200-1/2)			
S-LOC 2	4440-3/4 1474 (1500-3/4)	4440-1 1474 (1500-1)	4440-3	1474 (1500-3)
C CIRCLING	4440-1 1/4 1463 (1500-1 1/4)	4440-1 1/2 1463 (1500-1 1/2)	4440-3	1463 (1500-3)
WALNU FIX MINIMUMS (DUAL VOR RECEIVERS REQUIRED)				
S-LOC 2	3520-1/2	554 (600-1/2)	3520-1 1/8	554 (600-1 1/8)
C CIRCLING	3520-1 543 (600-1)	3580-1 603 (700-1)	3640-1 3/4 663 (700-3/4)	3760-2 1/2 783 (800-2 1/2)



FAF to MAP 8.8 NM					
Knots	60	90	120	150	180
Min:Sec	8:48	5:52	4:24	3:31	2:56

APP CRS	Rwy Idg	3510
301°	TDZE	2974
	Apt Elev	2977

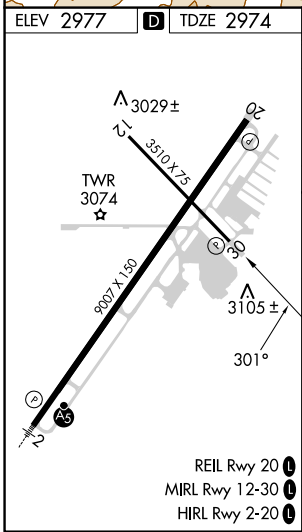
RNAV (GPS) RWY 30

GLACIER PARK INTL (GPI)

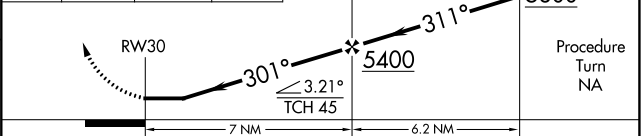
RNP APCH.
 ▼
 ▲ Rwy 30 helicopter visibility reduction below ¾ SM NA.
 ☁ -1.5°C

MISSED APPROACH: Climb to 12000 direct CEPUN and left turn via track 182° to KILLY and hold, continue climb-in-hold to 12000.

ATIS 132.625	SALT LAKE CENTER 127.075 244.875	GLACIER TOWER* 124.55 (CTAF) 0	GND CON 121.6	UNICOM 122.95
------------------------	--	--	-------------------------	-------------------------



12000	CEPUN	KILLY	Procedure NA for arrivals at ANGIL on V231 southbound.
▲	✧	△	EHTUJ



CATEGORY	A	B	C	D
LNAV MDA	3500-1	526 (600-1)	3500-1½	526 (600-1½)
CIRCLING	3520-1 543 (600-1)	3580-1 603 (700-1)	3640-1¾ 663 (700-1¾)	3760-2½ 783 (800-2½)

NW-1, 22 FEB 2024 to 21 MAR 2024

NW-1, 22 FEB 2024 to 21 MAR 2024

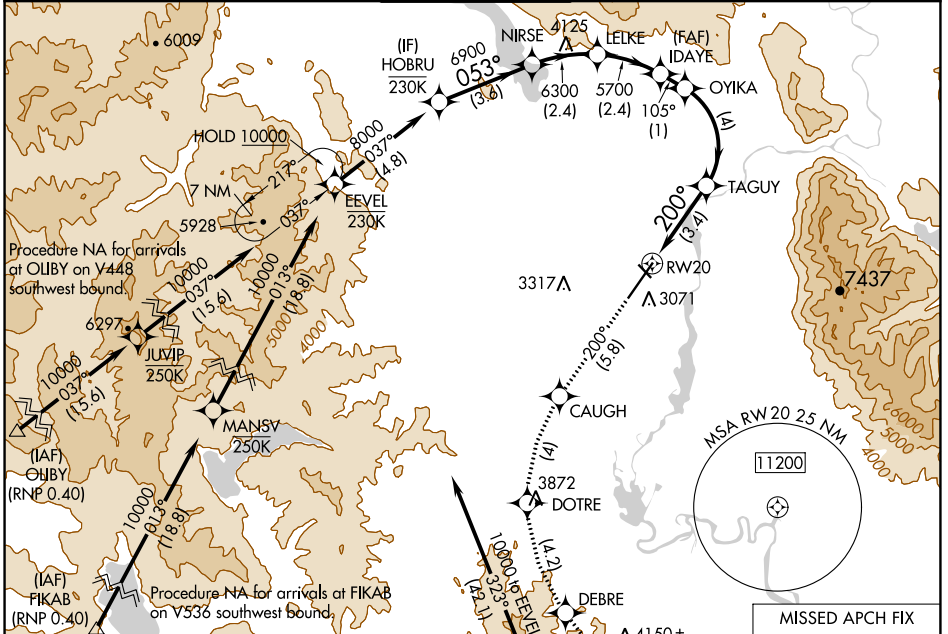
APP CRS	Rwy Idg	9007
200°	TDZE	2977
	Apt Elev	2977

RNAV (RNP) RWY 20

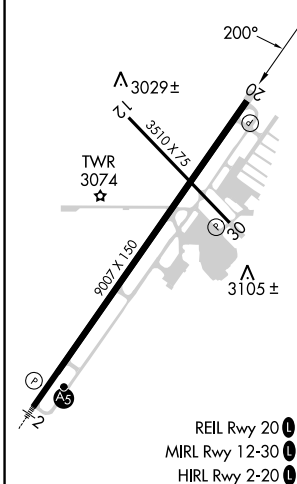
GLACIER PARK INTL (GPI)

RNP AR APCH - GPS.	MISSED APPROACH: Climb to 10000 on track 200° to CAUGH, left turn to DOTRE, left turn to DEBRE, and on track 128° to ANGL and hold, continue climb-in-hold to 10000. *Missed approach requires minimum climb of 230 feet per NM to 6800.
-15°C For uncompensated Baro-VNAV systems, procedure NA below -25°C or above 54°C.	

ATIS 132.625	SALT LAKE CENTER 127.075 244.875	GLACIER TOWER* 124.55 (CTAF) 0	GND CON 121.6	UNICOM 122.95
------------------------	--	--	-------------------------	-------------------------



ELEV 2977	D	TDZE 2977
-----------	----------	-----------



Procedure NA for arrivals at SKOTT on V231 southbound.

MISSED APCH FIX

10000	CAUGH	DOTRE	DEBRE	tr 128°	ANGIL	HOBRU
tr 200°						
	TAGUY	OYIKA	IDAYE	LELKE	NIRSE	8000
	RW20	4100	5700	6300	6900	GP 3.00°
			5700			TCH 45
	3.4 NM	4 NM	1 NM	2.4 NM	2.4 NM	3.6 NM

CATEGORY	A	B	C	D
RNP 0.10 DA*	3346-1 369 (400-1)			
RNP 0.30 DA*	3418-1 3/8 441 (500-1 3/8)			
RNP 0.30 DA	3637-1 1/8 660 (700-1 1/8)			

AUTHORIZATION REQUIRED

NW-1, 22 FEB 2024 to 21 MAR 2024

NW-1, 22 FEB 2024 to 21 MAR 2024

APP CRS 020°	Rwy Idg TDZE Apt Elev	9007 2966 2977
------------------------	-----------------------------	---

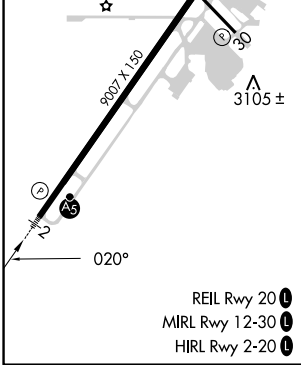
RNAV (RNP) Y RWY 2

GLACIER PARK INTL (GPI)

RF and GPS required. Missed approach requires RNP less than 1.0.
 For uncompensated Baro-VNAV systems, procedure NA below -21°C (-5°F) or above 43°C (109°F). For inoperative MALS/R increase RNP 0.10* visibility to 1¼ and RNP 0.30 visibility to 2.
 *Missed approach requires minimum climb of 220 feet per NM to 6100.

MALS/R
 MISSED APPROACH: Climb to 10000 via left turn to JOGAD, and via left turn to TONYU, and via 121° track to WILTO and via 129° track to ANGL and hold.

ATIS 132.625	SALT LAKE CENTER 127.075 244.875	GLACIER TOWER ★ 124.55 (CTAF) ①	GND CON 121.6	UNICOM 122.95
------------------------	--	---	-------------------------	-------------------------



Procedure Turn NA	JUNRU	WULEX	AVDIH	10000	JOGAD	ROYOG
GP 3.00° TCH 51	8000	7200	6200	5200	RW02	
	-3 NM	-3.2 NM	-7.1 NM	C	D	
CATEGORY	A	B	C	D		
RNP 0.10 DA*	NA	3340-¾	374 (400-¾)			
RNP 0.30 DA	NA	3522-1½	556 (600-1½)			

AUTHORIZATION REQUIRED

NW-1, 22 FEB 2024 to 21 MAR 2024

NW-1, 22 FEB 2024 to 21 MAR 2024

WAAS CH 70799 W02A	APP CRS 020°	Rwy Idg 9007 TDZE 2966 Apr Elev 2977
--	------------------------	---

RNAV (GPS) Z RWY 2

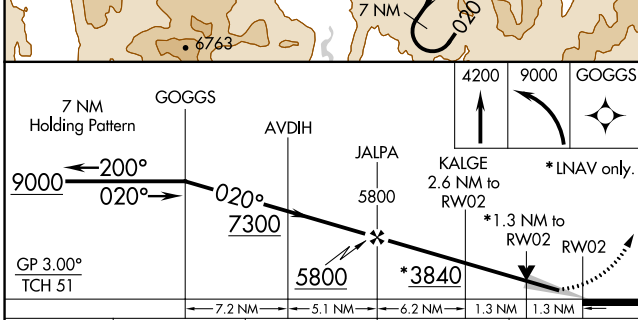
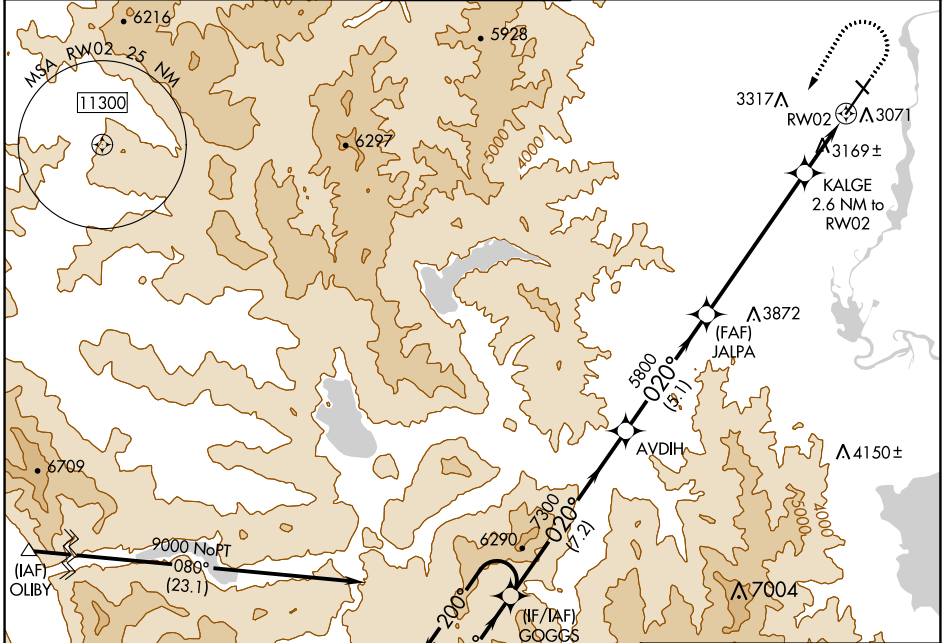
GLACIER PARK INTL (GPI)

V For uncompensated Baro-VNAV systems, LNAV/VNAV NA below -24°C (-11°F) or above 53°C (128°F).
8 -15°C
DME/DME RNP-0.3 NA.

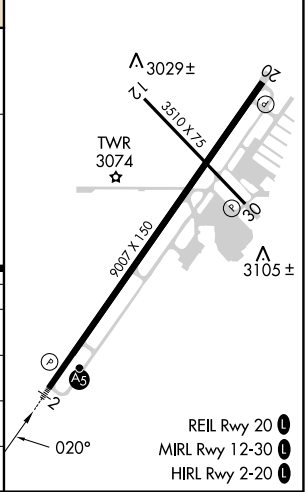


MISSED APPROACH: (Do not exceed 185K until GOGGS) Climb to 4200, then climbing left turn to 9000 direct GOGGS and hold, continue climb-in-hold to 9000.

ATIS 132.625	SALT LAKE CENTER 127.075 244.875	GLACIER TOWER * 124.55 (CTAF) 0	GND CON 121.6	UNICOM 122.95
------------------------	--	---	-------------------------	-------------------------



ELEV 2977	D TDZE 2966
-----------	--------------------



CATEGORY	A	B	C	D
LPV DA		3290-5/8	324 (400-5/8)	
LNAV/VNAV DA		3468-1 1/4	502 (500-1 1/4)	
LNAV MDA	3420-1 1/2	454 (500-1/2)	3420-7/8	454 (500-7/8)
C CIRCLING	3480-1 503 (600-1)	3580-1 603 (700-1)	3640-1 3/4 663 (700-1 3/4)	3760-2 1/2 783 (800-2 1/2)

NW-1, 22 FEB 2024 to 21 MAR 2024

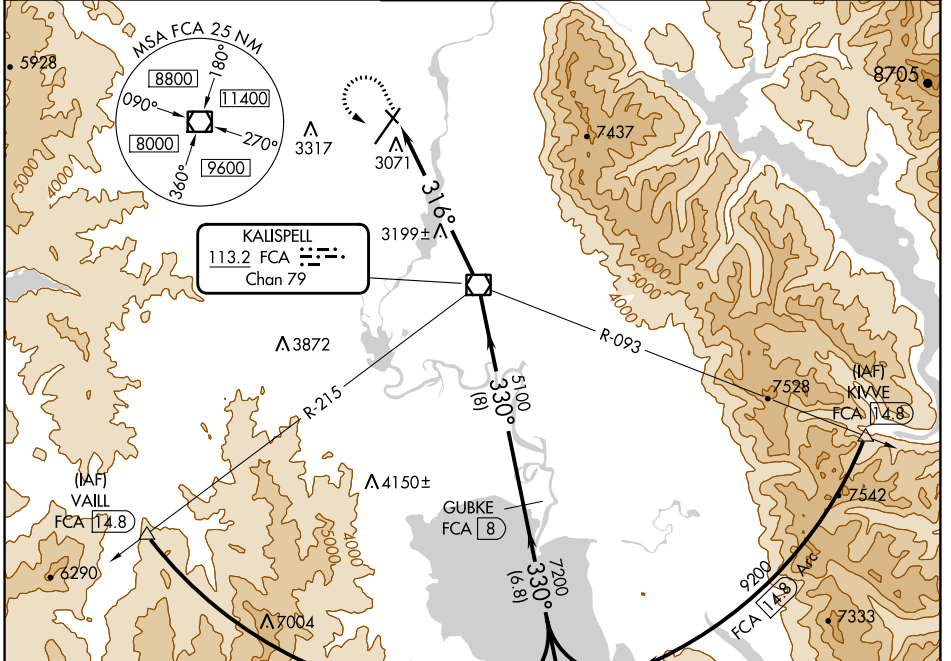
NW-1, 22 FEB 2024 to 21 MAR 2024

VOR/DME FCA 113.2 Chan 79	APP CRS 316°	Rwy Idg TDZE Apt Elev	3510 2974 2977
---	------------------------	-----------------------------	---

VOR/DME RWY 30
GLACIER PARK INTL (GPI)

⚠ Helicopter visibility reduction below 1 SM not authorized. When VGSi inoperative, straight-in minimums not authorized at night.
⚠ -1.5°C
MISSED APPROACH: Climb to 4000 then climbing left turn to 9300 via heading 130° and FCA VOR/DME R-150 to ITONE/14.8 DME and hold, continue climb-in-hold to 9300.

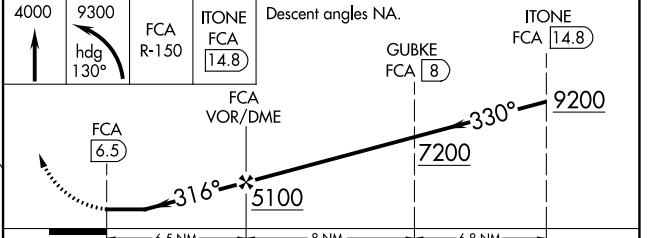
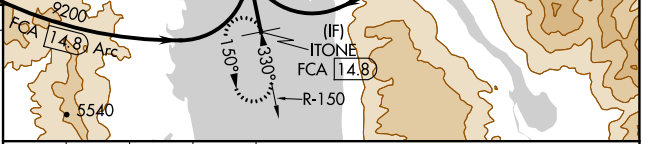
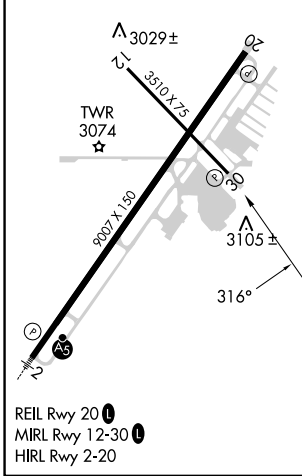
ATIS 132.625	SALT LAKE CENTER 127.075 244.875	GLACIER TOWER* 124.55 (CTAF) 0	GND CON 121.6	UNICOM 122.95
------------------------	--	--	-------------------------	-------------------------



NW-1, 22 FEB 2024 to 21 MAR 2024

NW-1, 22 FEB 2024 to 21 MAR 2024

ELEV 2977 **D** TDZE 2974



CATEGORY	A	B	C	D
S-30	3480-1	506 (600-1)	3480-1½	506 (600-1½)
C CIRCLING	3520-1 543 (600-1)	3580-1 603 (700-1)	3640-1¾ 663 (700-1¾)	3760-2½ 783 (800-2½)