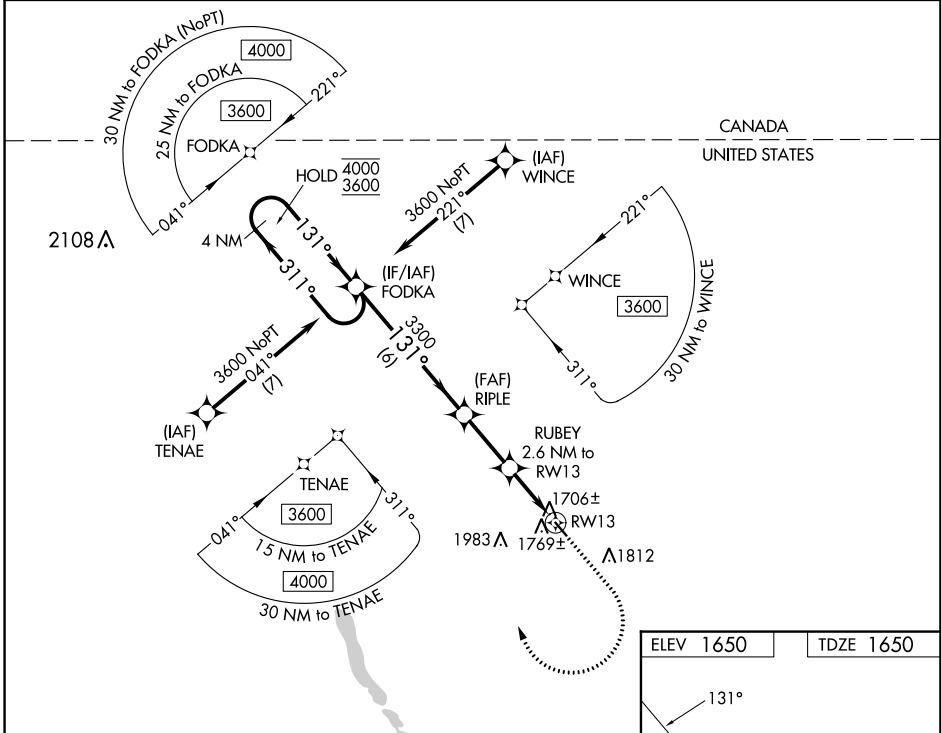


WAAS CH <b>45844</b> <b>W13A</b>	APP CRS <b>131°</b>	Rwy Idg TDZE Apt Elev	<b>3599</b> <b>1650</b> <b>1650</b>
--	------------------------	-----------------------------	---

# RNAV (GPS) RWY 13

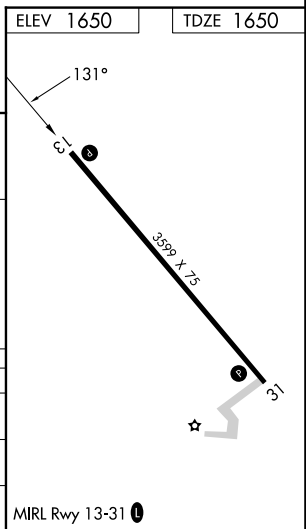
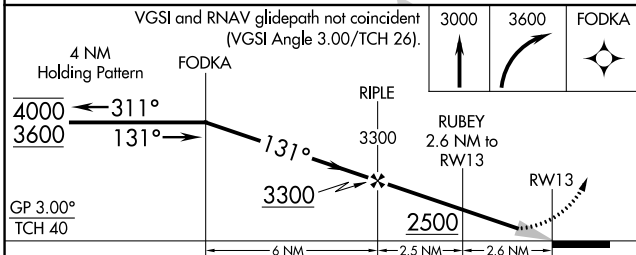
MOHALL MUNI (HBC)

RNP APCH - GPS.		MISSED APPROACH: Climb to 3000 then climbing right turn to 3600 direct FODKA and hold.
Use Minot Intl altimeter setting.		
MOT ASOS <b>118.725</b>	MINOT APP CON ★ <b>119.6 363.8</b>	UNICOM <b>122.8 (CTAF) 0</b>



NC-1, 22 FEB 2024 to 21 MAR 2024

NC-1, 22 FEB 2024 to 21 MAR 2024



CATEGORY	A	B	C	D
LPV DA	1977-1 327 (400-1)			NA
LNAV MDA	2100-1	450 (500-1)	2100-1 $\frac{3}{8}$ 450 (500-1 $\frac{3}{8}$ )	NA
CIRCLING	2220-1	570 (600-1)	2380-2 730 (800-2)	NA

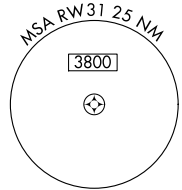
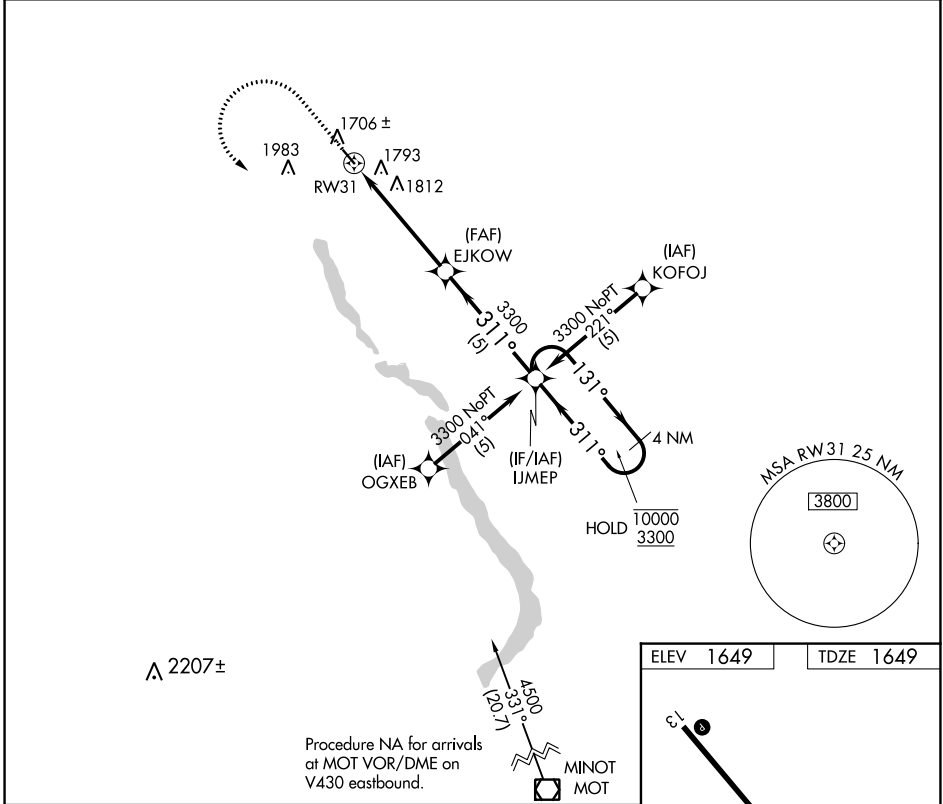
APP CRS	Rwy Idg	<b>3599</b>
<b>311°</b>	TDZE	<b>1649</b>
	Apt Elev	<b>1649</b>

# RNAV (GPS) RWY 31

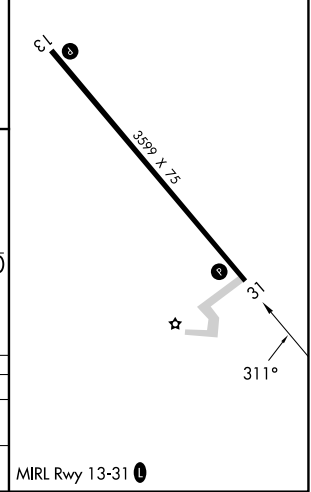
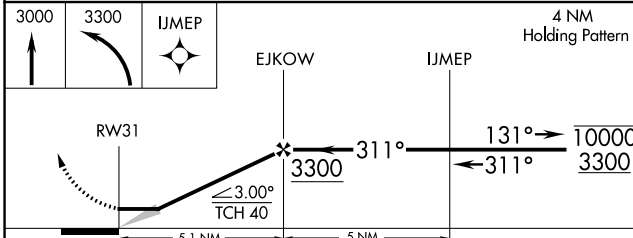
MOHALL MUNI (HBC)

RNP APCH.	MISSED APPROACH: Climb to 3000 then climbing left turn to 3300 direct IJMEP and hold.
NA Use Minot Int'l altimeter setting.	

MOT ASOS <b>118.725</b>	MINOT APP CON ★ <b>119.6 363.8</b>	UNICOM <b>122.8 (CTAF) 0</b>
----------------------------	---------------------------------------	---------------------------------



ELEV 1649	TDZE 1649
-----------	-----------



CATEGORY	A	B	C	D
RNAV MDA	2180-1 531 (600-1)		2180-1½ 531 (600-1½)	NA
CIRCLING	2240-1 591 (600-1)		2380-2 731 (800-2)	NA

NC-1, 22 FEB 2024 to 21 MAR 2024

NC-1, 22 FEB 2024 to 21 MAR 2024