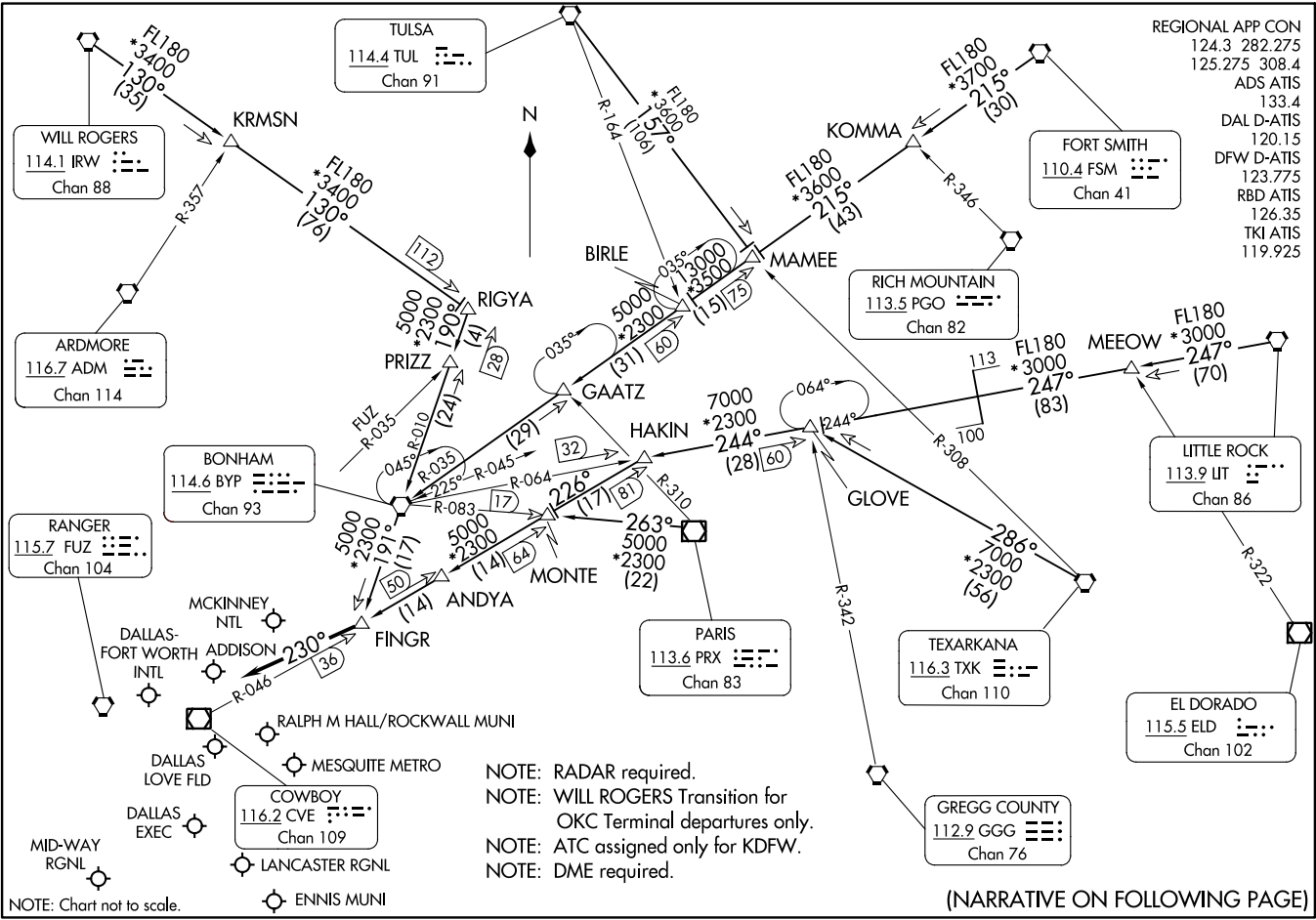


FINGR NINE ARRIVAL
(FINGR, FINGR9) 20APR23

FINGR NINE ARRIVAL
(FINGR, FINGR9) 23334



AL-106 (FAA)

DALLAS-FORT WORTH, TEXAS

DALLAS-FORT WORTH, TEXAS

(NARRATIVE ON FOLLOWING PAGE)

NOTE: Chart not to scale.

ARRIVAL ROUTE DESCRIPTION

BONHAM TRANSITION (BYP.FINGR9): From over BYP VORTAC on BYP R-191 to FINGR. Thence

FORT SMITH TRANSITION (FSM.FINGR9): From over FSM VORTAC on FSM R-215 to MAMEE, then on BYP R-035 to BYP VORTAC, then on BYP R-191 to FINGR. Thence

LITTLE ROCK TRANSITION (LIT.FINGR9): From over LIT VORTAC on LIT R-247 to MEEOW, then on LIT R-247 and BYP R-064 to GLOVE, then on BYP R-064 to HAKIN, then on CVE R-046 to FINGR. Thence

PARIS TRANSITION (PRX.FINGR9): From over PRX VOR/DME on PRX R-263 to MONTE, then on CVE R-046 to FINGR. Thence

RIGYA TRANSITION (RIGYA.FINGR9): From over RIGYA on BYP R-010 to BYP VORTAC, then on BYP R-191 to FINGR. Thence

TEXARKANA TRANSITION (TXK.FINGR9): From over TXK VORTAC on TXK R-286 to GLOVE, then on BYP R-064 to HAKIN, then on CVE R-046 to FINGR. Thence

TULSA TRANSITION (TUL.FINGR9): From over TUL VORTAC on TUL R-157 to MAMEE, then on BYP R-035 to BYP VORTAC, then on BYP R-191 to FINGR. Thence

WILL ROGERS TRANSITION (IRW.FINGR9): From over IRW VORTAC on IRW R-130 to RIGYA, then on BYP R-010 to BYP VORTAC, then on BYP R-191 to FINGR. Thence

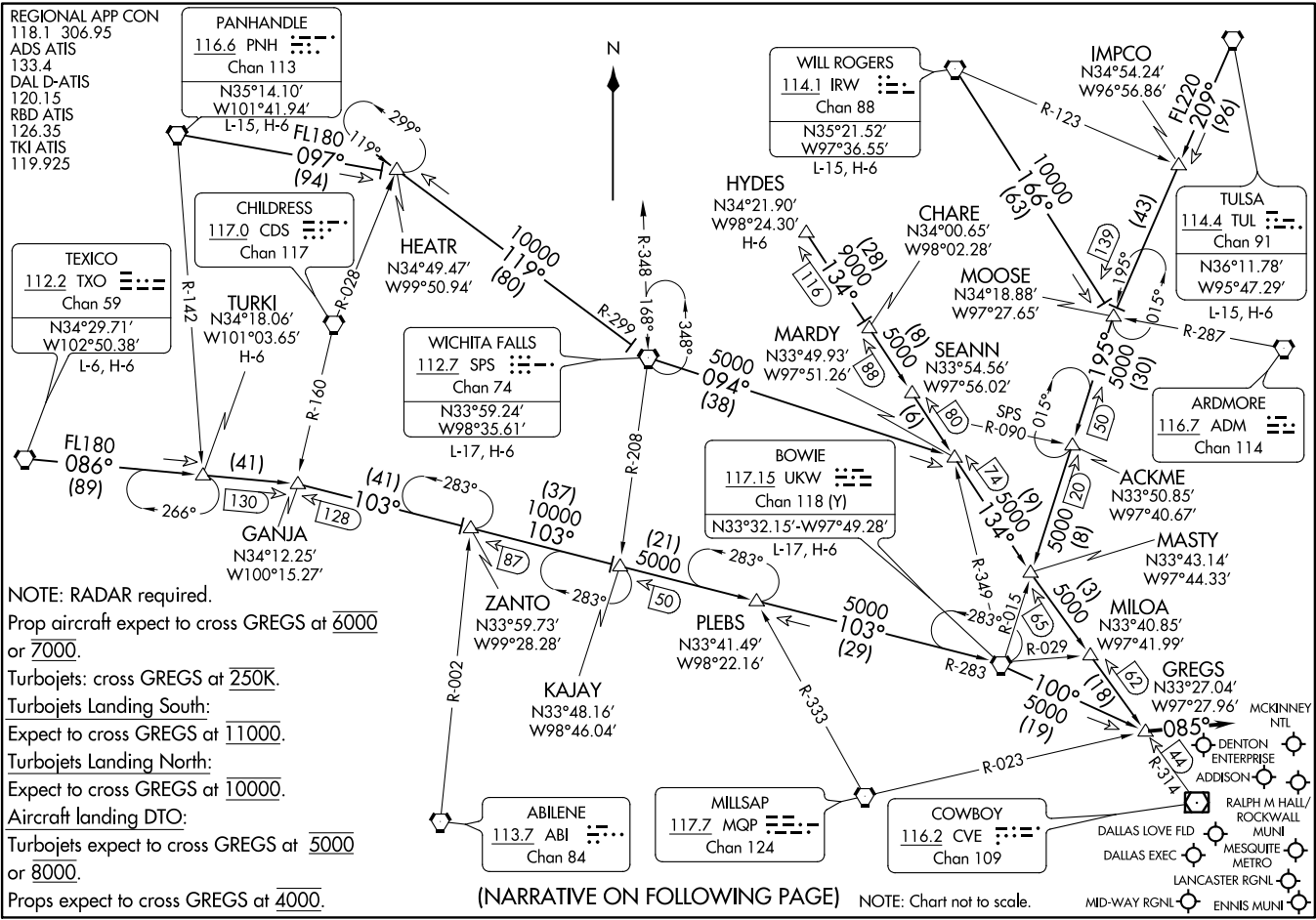
. . . . from FINGR, then on heading 230° or as assigned by ATC. Expect RADAR vectors to final approach course.

SC-2, 22 FEB 2024 to 21 MAR 2024

SC-2, 22 FEB 2024 to 21 MAR 2024

GREGS ONE ARRIVAL
(GREGS, GREGS 1) 14JUL22

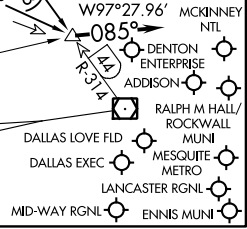
(GREGS, GREGS 1) 22195
AL-106 (FAA)



NOTE: RADAR required.
 Prop aircraft expect to cross GREGS at 6000 or 7000.
 Turbojets: cross GREGS at 250K.
 Turbojets Landing South:
 Expect to cross GREGS at 11000.
 Turbojets Landing North:
 Expect to cross GREGS at 10000.
 Aircraft landing DTO:
 Turbojets expect to cross GREGS at 5000 or 8000.
 Props expect to cross GREGS at 4000.

(NARRATIVE ON FOLLOWING PAGE)

NOTE: Chart not to scale.



DALLAS-FORT WORTH, TEXAS

REGIONAL APP CON
 118.1 306.95
 ADS ATIS
 133.4
 DAL D-ATIS
 120.15
 RBD ATIS
 126.35
 TKI ATIS
 119.925

PANHANDLE
 116.6 PNH
 Chan 113
 N35°14.10'
 W101°41.94'
 L-15, H-6

WICHITA FALLS
 112.7 SPS
 Chan 74
 N33°59.24'
 W98°35.61'
 L-17, H-6

WILL ROGERS
 114.1 IRW
 Chan 88
 N35°21.52'
 W97°36.55'
 L-15, H-6

TULSA
 114.4 TUL
 Chan 91
 N36°11.78'
 W95°47.29'
 L-15, H-6

TEXICO
 112.2 TXO
 Chan 59
 N34°29.71'
 W102°50.38'
 L-6, H-6

TURKI
 N34°18.06'
 W101°03.65'
 H-6

WICHITA FALLS
 112.7 SPS
 Chan 74
 N33°59.24'
 W98°35.61'
 L-17, H-6

MARDY
 N33°49.93'
 W97°51.26'
 SPS
 R-090

SEANN
 N33°54.56'
 W97°56.02'
 SPS
 R-090

ARDMORE
 116.7 ADM
 Chan 114

BOWIE
 117.15 UKW
 Chan 118 (Y)
 N33°32.15'-W97°49.28'
 L-17, H-6

MASTY
 N33°43.14'
 W97°44.33'

ZANTO
 N33°59.73'
 W99°28.28'

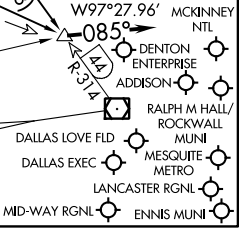
PLEBS
 N33°41.49'
 W98°22.16'

GREGS
 N33°27.04'
 W97°27.96'

ABILENE
 113.7 ABI
 Chan 84

MILLSAP
 117.7 MQP
 Chan 124

COWBOY
 116.2 CVE
 Chan 109



ARRIVAL DESCRIPTION

BOWIE TRANSITION (UKW.GREGS1): From over UKW VORTAC on UKW R-100 to GREGS. Thence. . . .

HYDES TRANSITION (HYDES.GREGS1): From over HYDES on CVE R-314 to GREGS. Thence. . . .

PANHANDLE TRANSITION (PNH.GREGS1): From over PNH VORTAC on PNH R-097 to HEATR, then on SPS R-299 to SPS VORTAC, then on SPS R-094 to MARDY, then on CVE R-314 to GREGS. Thence. . . .

TEXICO TRANSITION (TXO.GREGS1): From over TXO VORTAC on TXO R-086 to GANJA, then on UKW R-283 to UKW VORTAC, then on UKW R-100 to GREGS. Thence. . . .

TULSA TRANSITION (TUL.GREGS1): From over TUL VORTAC on TUL R-209 to MOOSE, then on UKW R-015 to MASTY, then on CVE R-314 to GREGS. Thence. . . .

TURKI TRANSITION (TURKI.GREGS1): From over TURKI on TXO R-086 to GANJA, then on UKW R-283 to UKW VORTAC, then on UKW R-100 to GREGS. Thence. . . .

WICHITA FALLS TRANSITION (SPS.GREGS1): From over SPS VORTAC on SPS R-094 to MARDY, then on CVE R-314 to GREGS. Thence. . . .

WILL ROGERS TRANSITION (IRW.GREGS1): From over IRW VORTAC on IRW R-166 to MOOSE, then on UKW R-015 to MASTY, then on CVE R-314 to GREGS. Thence. . . .

. . . .from over GREGS, depart GREGS heading 085°. Expect RADAR vectors to final approach course.

SC-2, 22 FEB 2024 to 21 MAR 2024

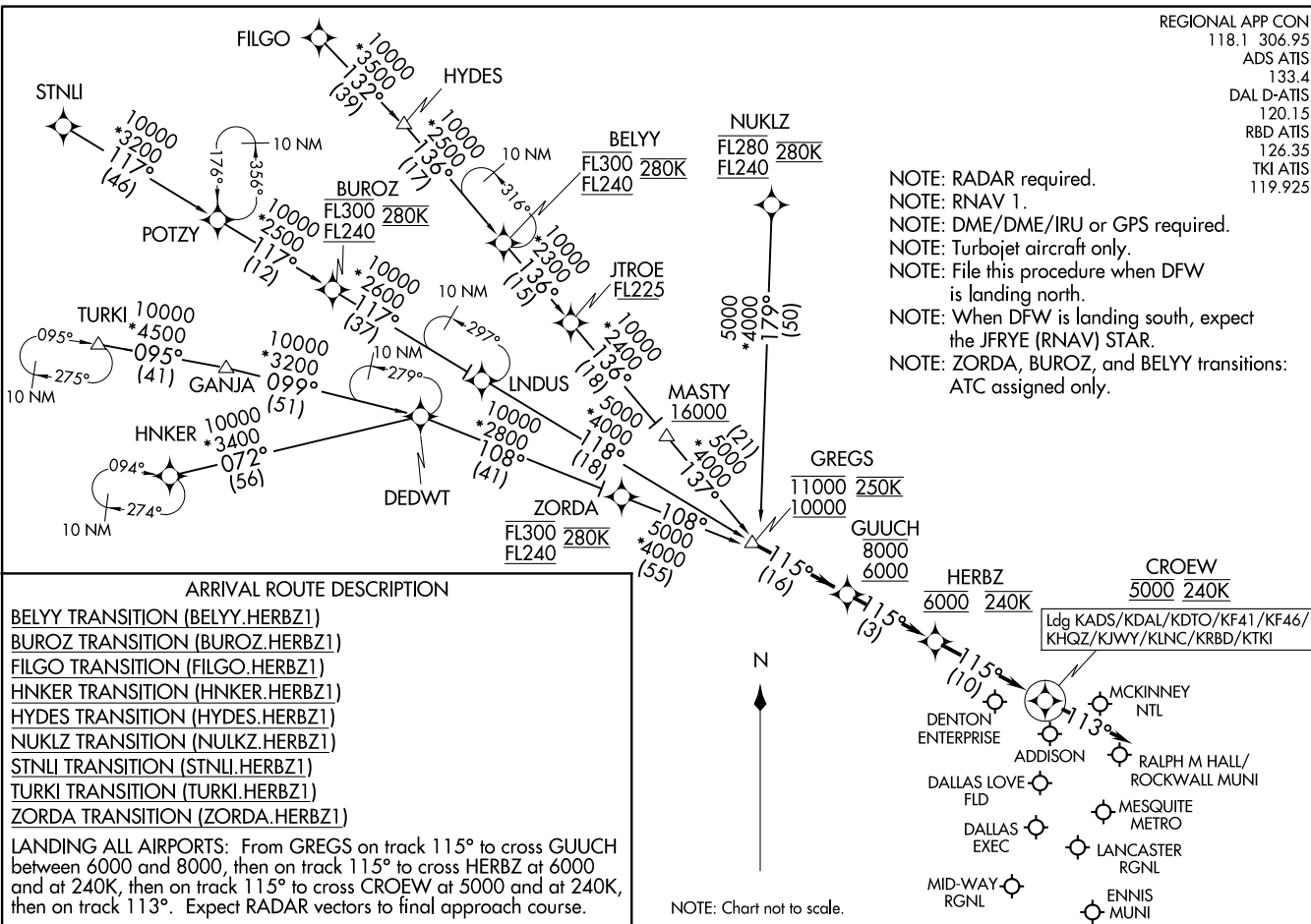
SC-2, 22 FEB 2024 to 21 MAR 2024

HERBZ ONE ARRIVAL (RNAV)
(GREGS.HERBZ1) 17JUN21

REGIONAL APP CON
118.1 306.95
ADS ATIS
133.4
DAL D-ATIS
120.15
RBD ATIS
126.35
TKI ATIS
119.925

(GREGS.HERBZ1) 21224
HERBZ ONE ARRIVAL (RNAV)

A1-106 (FAA)



NOTE: RADAR required.
NOTE: RNAV 1.
NOTE: DME/DME/IRU or GPS required.
NOTE: Turbojet aircraft only.
NOTE: File this procedure when DFW is landing north.
NOTE: When DFW is landing south, expect the JFRYE (RNAV) STAR.
NOTE: ZORDA, BUROZ, and BELY transitions: ATC assigned only.

ARRIVAL ROUTE DESCRIPTION

BELY TRANSITION (BELY.HERBZ1)
BUROZ TRANSITION (BUROZ.HERBZ1)
FILGO TRANSITION (FILGO.HERBZ1)
HNKER TRANSITION (HNKER.HERBZ1)
HYDES TRANSITION (HYDES.HERBZ1)
NUKLZ TRANSITION (NUKLZ.HERBZ1)
STNLI TRANSITION (STNLI.HERBZ1)
TURKI TRANSITION (TURKI.HERBZ1)
ZORDA TRANSITION (ZORDA.HERBZ1)

LANDING ALL AIRPORTS: From GREGS on track 115° to cross GUUCH between 6000 and 8000, then on track 115° to cross HERBZ at 6000 and at 240K, then on track 115° to cross CROEW at 5000 and at 240K, then on track 113°. Expect RADAR vectors to final approach course.

NOTE: Chart not to scale.

DALLAS, TEXAS

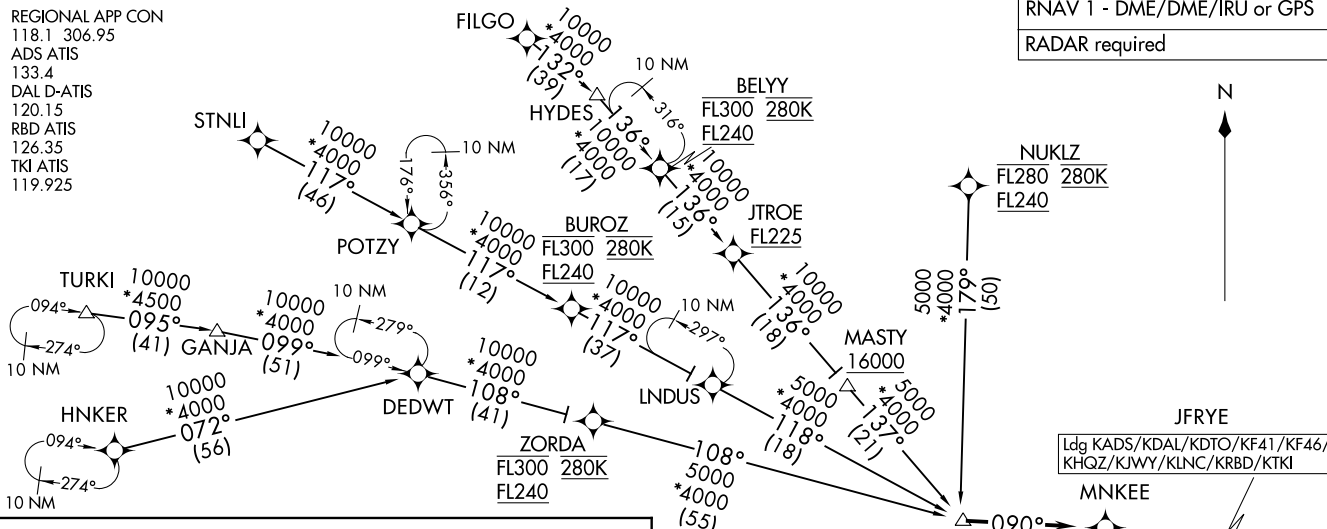
DALLAS, TEXAS

JFRYE FIVE ARRIVAL (RNAV)
(GREGS.JFRYE5) 14JUL22

(GREGS.JFRYE5) 22195
JFRYE FIVE ARRIVAL (RNAV)

REGIONAL APP CON
118.1 306.95
ADS ATIS
133.4
DAL D-ATIS
120.15
RBD ATIS
126.35
TKI ATIS
119.925

RNAV 1 - DME/DME/IRU or GPS
RADAR required



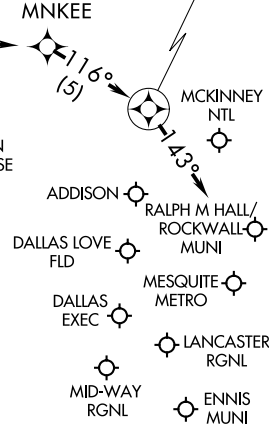
ARRIVAL ROUTE DESCRIPTION

- BELY TRANSITION (BELY.JFRYE5)
- BUROZ TRANSITION (BUROZ.JFRYE5)
- FILGO TRANSITION (FILGO.JFRYE5)
- HNKER TRANSITION (HNKER.JFRYE5)
- HYDES TRANSITION (HYDES.JFRYE5)
- NUKLZ TRANSITION (NUKLZ.JFRYE5)
- STNLI TRANSITION (STNLI.JFRYE5)
- TURKI TRANSITION (TURKI.JFRYE5)
- ZORDA TRANSITION (ZORDA.JFRYE5)

LANDING ALL AIRPORTS: From GREGS on track 090° to MNKEE, then on track 116° to JFRYE, then on track 143°. Expect RADAR vectors to final approach course.

- NOTE: Jet aircraft only.
- NOTE: When DFW is landing north, expect the HERBZ RNAV STAR.
- NOTE: ZORDA, BUROZ, and BELY Enroute Transitions - ATC assigned only.

NOTE: Chart not to scale.

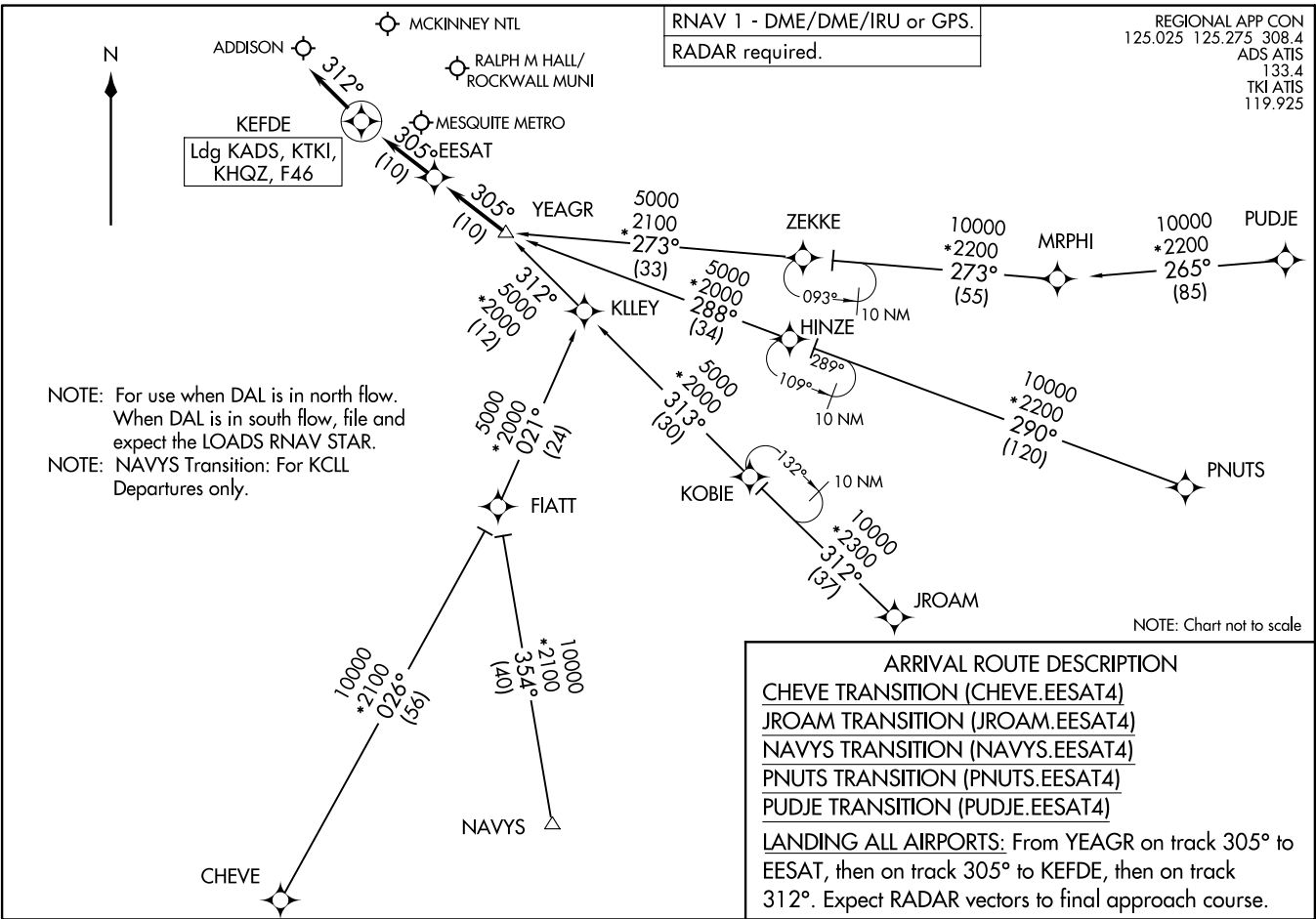


AL-106 (FAA)
DALLAS, TEXAS

DALLAS, TEXAS

EEASAT FOUR ARRIVAL (RNAV)
 (YEAGR.EESAT4) 20APR23

DALLAS, TEXAS



ARRIVAL ROUTE DESCRIPTION
CHEVE TRANSITION (CHEVE.EESAT4)
JROAM TRANSITION (JROAM.EESAT4)
NAVYS TRANSITION (NAVYS.EESAT4)
PNUTS TRANSITION (PNUTS.EESAT4)
PUDJE TRANSITION (PUDJE.EESAT4)
LANDING ALL AIRPORTS: From YEAGR on track 305° to EESAT, then on track 305° to KEFDE, then on track 312°. Expect RADAR vectors to final approach course.

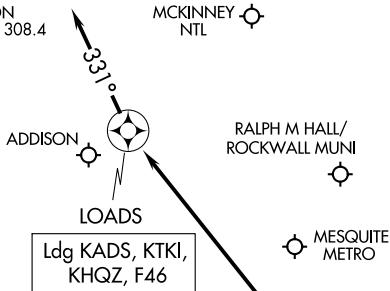
(YEAGR.EESAT4) 23110
 EEASAT FOUR ARRIVAL (RNAV)

AL-768 (FAA)

DALLAS, TEXAS

LOADS FOUR ARRIVAL (RNAV)
(YEAGR.LOADS4) 20APR23

REGIONAL APP CON
125.025 125.275 308.4
ADS ATIS
133.4
TKI ATIS
119.925



ARRIVAL ROUTE DESCRIPTION

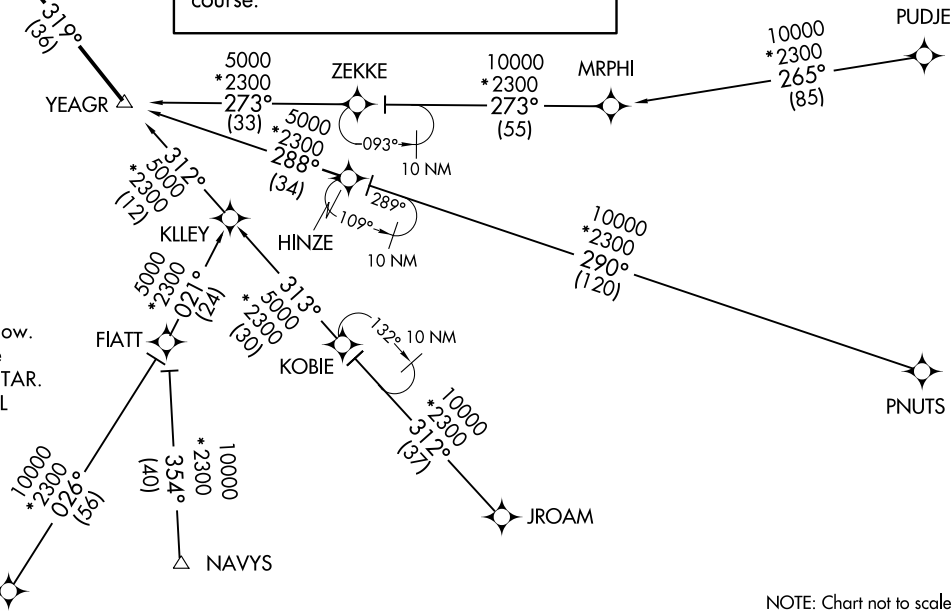
CHEVE TRANSITION (CHEVE.LOADS4)
JROAM TRANSITION (JROAM.LOADS4)
NAVYS TRANSITION (NAVYS.LOADS4)
PNUTS TRANSITION (PNUTS.LOADS4)
PUDJE TRANSITION (PUDJE.LOADS4)

LANDING ALL AIRPORTS: From YEAGR on track 319° to LOADS, then on track 331°.
 Expect RADAR vectors to final approach course.

RNAV 1 - DME/DME/IRU or GPS.
 RADAR required.

LOADS FOUR ARRIVAL (RNAV)
(YEAGR.LOADS4) 23110

AL-768 (FAA)



NOTE: For use when DAL is in south flow.
 When DAL is in north flow, file and expect the EESAT RNAV STAR.

NOTE: NAVYS TRANSITION: For KCLL departures only.

NOTE: Chart not to scale.

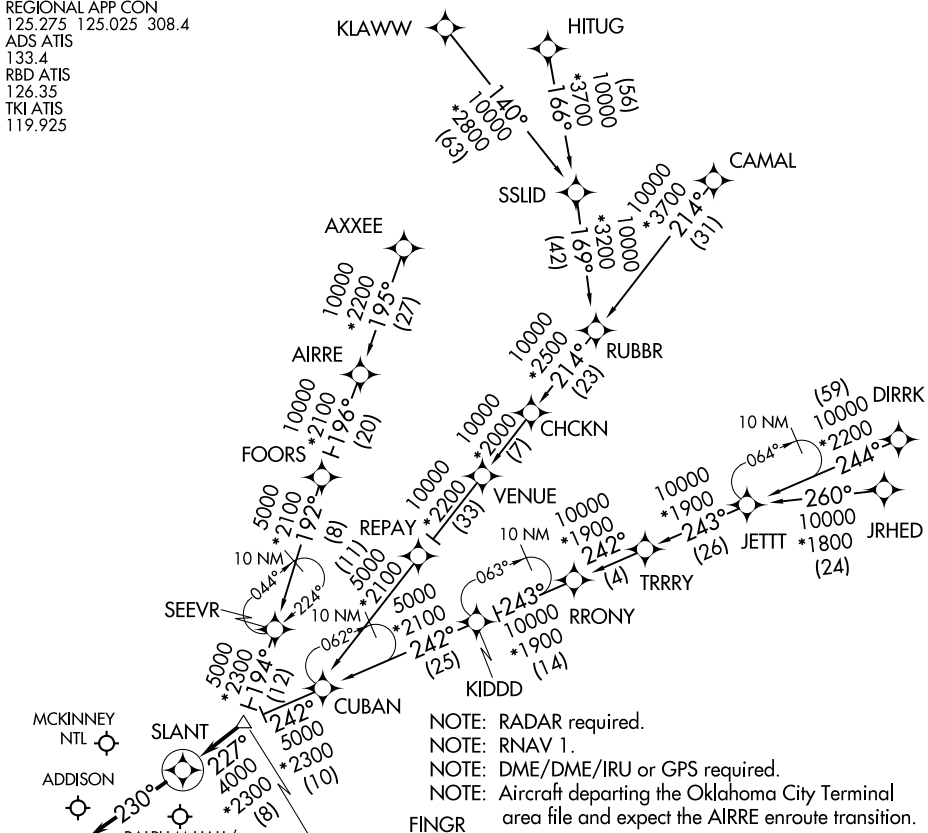
DALLAS, TEXAS

DALLAS, TEXAS

SLANT THREE ARRIVAL (RNAV)

DALLAS, TEXAS

REGIONAL APP CON
 125.275 125.025 308.4
 ADS ATIS
 133.4
 RBD ATIS
 126.35
 TKI ATIS
 119.925



NOTE: RADAR required.
 NOTE: RNAV 1.
 NOTE: DME/DME/IRU or GPS required.
 NOTE: Aircraft departing the Oklahoma City Terminal area file and expect the AIRRE enroute transition.

VERTICAL NAVIGATION
PLANNING INFORMATION
 TURBOJETS: Expect 8000
 PROPS: Expect 6000 or 7000

NOTE: Chart not to scale.

ARRIVAL ROUTE DESCRIPTION

- AIRRE TRANSITION (AIRRE.SLANT3): (For traffic filing FL190 and below.)
- AXXEE TRANSITION (AXXEE.SLANT3): (For aircraft filing FL230 and below.)
- CAMAL TRANSITION (CAMAL.SLANT3)
- DIRRK TRANSITION (DIRRK.SLANT3)
- HITUG TRANSITION (HITUG.SLANT3)
- JRHED TRANSITION (JRHE.SLANT3): (ATC assigned only.)
- KLAWW TRANSITION (KLAWW.SLANT3)
- RRONY TRANSITION (RRONY.SLANT3): (For aircraft filing FL230 and below.)

From FINGR on track 227° to SLANT, then on track 230°.
 Expect RADAR vectors to final approach course.

SLANT THREE ARRIVAL (RNAV)

DALLAS, TEXAS

SC-2, 22 FEB 2024 to 21 MAR 2024

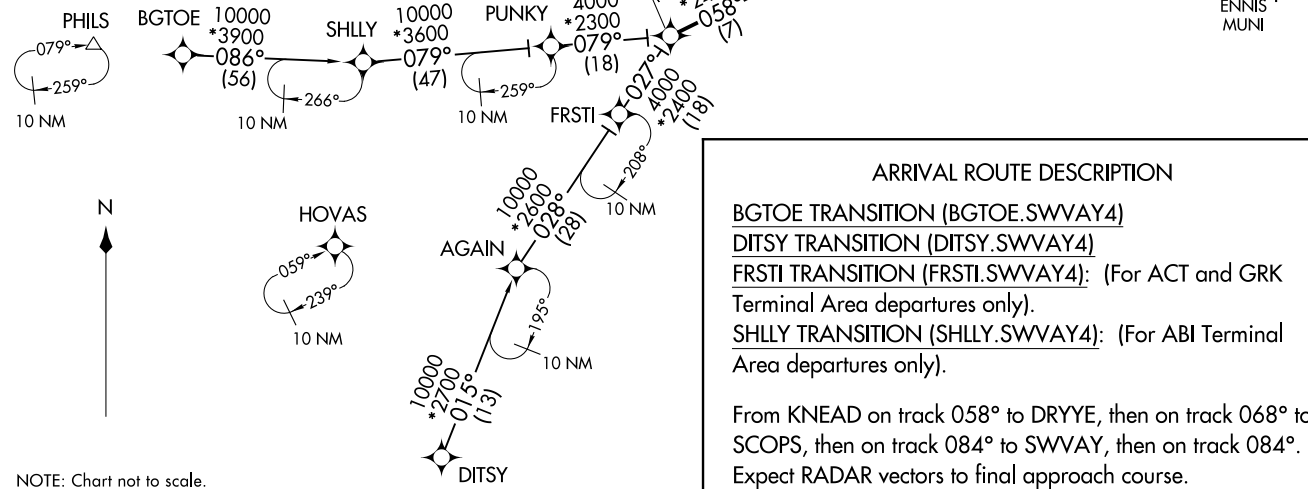
SC-2, 22 FEB 2024 to 21 MAR 2024

SWWAY FOUR ARRIVAL (RNAV)
 (KNEAD.SWWAY4) 26MAY16

(KNEAD.SWWAY4) 23222
 SWWAY FOUR ARRIVAL (RNAV)

REGIONAL APP CON
 135.975 379.9
 ADS ATIS
 133.4
 DAL D-ATIS
 120.15
 FWS ATIS
 120.025
 RBD ATIS
 126.35
 TKI ATIS
 119.925

- NOTE: RADAR required.
- NOTE: RNAV 1.
- NOTE: DME/DME/IRU or GPS required.
- NOTE: DAL ARRIVALS: Props only. Turbojet aircraft file and expect the BACHR or DRYYE RNAV STARS.
- NOTE: Props exempt from speed restriction at KNEAD.
- NOTE: When DFW is in south flow, turbojets expect to cross KNEAD at 10000.
- NOTE: When DFW is in north flow, turbojets expect to cross KNEAD at 12000.



ARRIVAL ROUTE DESCRIPTION

BGTOE TRANSITION (BGTOE.SWWAY4)

DITSY TRANSITION (DITSY.SWWAY4)

FRSTI TRANSITION (FRSTI.SWWAY4): (For ACT and GRK Terminal Area departures only).

SHLLY TRANSITION (SHLLY.SWWAY4): (For ABI Terminal Area departures only).

From KNEAD on track 058° to DRYYE, then on track 068° to SCOPS, then on track 084° to SSWAY, then on track 084°.
 Expect RADAR vectors to final approach course.

NOTE: Chart not to scale.

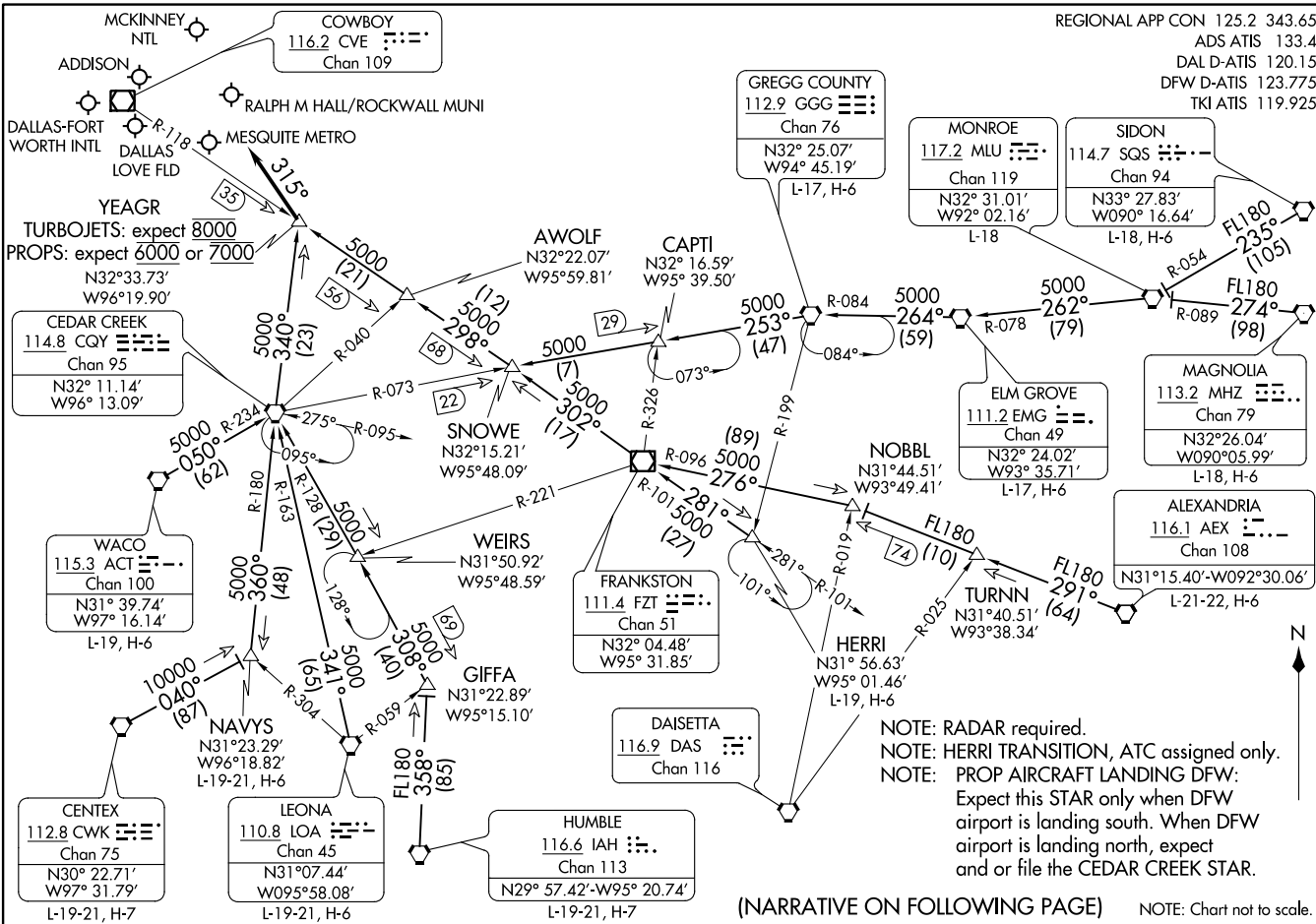
DALLAS, TEXAS

DALLAS, TEXAS

YEAGR: YEAGR4) 21MARV20

YEAGR FOUR ARRIVAL

DALLAS-FORT WORTH, TEXAS



YEAGR FOUR ARRIVAL 23054

AL-6039 (FAA)

DALLAS-FORT WORTH, TEXAS

(NARRATIVE ON FOLLOWING PAGE)

NOTE: Chart not to scale.

YEAGR FOUR ARRIVAL

DALLAS-FORT WORTH, TEXAS

ARRIVAL ROUTE DESCRIPTION

ALEXANDRIA TRANSITION (AEX.YEAGR4): From over AEX VORTAC on AEX R-291 to NOBBL, then on FZT R-096 to FZT VOR/DME, then on FZT R-302 to SNOWE, then on CVE R-118 to YEAGR. Thence. . . .

CENTEX TRANSITION (CWK.YEAGR4): From over CWK VORTAC on CWK R-040 to NAVYS, then on CQY R-180 to CQY VORTAC, then on CQY R-340 to YEAGR. Thence. . . .

ELM GROVE TRANSITION (EMG.YEAGR4): From over EMG VORTAC on EMG R-264 and GGG R-084 to GGG VORTAC, then on GGG R-253 and CQY R-073 to CAPTI, then on CQY R-073 to SNOWE, then on CVE R-118 to YEAGR. Thence. . . .

GREGG COUNTY TRANSITION (GGG.YEAGR4): From over GGG VORTAC on GGG R-253 and CQY R-073 to CAPTI, then on CQY R-073 to SNOWE, then on CVE R-118 to YEAGR. Thence. . . .

GIFFA TRANSITION (GIFFA.YEAGR4): From over GIFFA on CQY R-128 to CQY VORTAC, then on CQY R-340 to YEAGR. Thence. . . .

HERRI TRANSITION (HERRI.YEAGR4): From over HERRI on FZT R-101 to FZT VOR/DME, then on FZT R-302 to SNOWE, then on CVE R-118 to YEAGR. Thence. . . .

HUMBLE TRANSITION (IAH.YEAGR4): From over IAH VORTAC on IAH R-358 to GIFFA, then on CQY R-128 to CQY VORTAC, then on CQY R-340 to YEAGR. Thence. . . .

LEONA TRANSITION (LOA.YEAGR4): From over LOA VORTAC on LOA R-341 and CQY R-163 to CQY VORTAC, then on CQY R-340 to YEAGR. Thence. . . .

MAGNOLIA TRANSITION (MHZ.YEAGR4): From over MHZ VORTAC on MHZ R-274 and MLU R-089 to MLU VORTAC, then on MLU R-262 and EMG R-078 to EMG VORTAC, then on EMG R-264 and GGG R-084 to GGG VORTAC, then on GGG R-253 and CQY R-073 to CAPTI, then on CQY R-073 to SNOWE, then on CVE R-118 to YEAGR. Thence. . . .

MONROE TRANSITION (MLU.YEAGR4): From over MLU VORTAC on MLU R-262 and EMG R-078 to EMG VORTAC, then on EMG R-264 and GGG R-084 to GGG VORTAC, then on GGG R-253 and CQY R-073 to CAPTI, then on CQY R-073 to SNOWE, then on CVE R-118 to YEAGR. Thence. . . .

NAVYS TRANSITION (NAVYS.YEAGR4): From over NAVYS on CQY R-180 to CQY VORTAC, then on CQY R-340 to YEAGR. Thence. . . .

SIDON TRANSITION (SQS.YEAGR4): From over SQS VORTAC on SQS R-235 and MLU R-054 to MLU VORTAC, then on MLU R-262 and EMG R-078 to EMG VORTAC, then on EMG R-264 and GGG R-084 to GGG VORTAC, then on GGG R-253 and CQY R-073 to CAPTI, then on CQY R-073 to SNOWE, then on CVE R-118 to YEAGR. Thence. . . .

WACO TRANSITION (ACT.YEAGR4): From over ACT VORTAC on ACT R-050 and CQY R-234 to CQY VORTAC, then on CQY R-340 to YEAGR. Thence. . . .

. . . from over YEAGR, depart heading 315° or as assigned by ATC.
Expect RADAR vectors to final.

SC-2, 22 FEB 2024 to 21 MAR 2024

SC-2, 22 FEB 2024 to 21 MAR 2024

YEAGR FOUR ARRIVAL

DALLAS-FORT WORTH, TEXAS