

MARY ESTHER, FLORIDA

22195

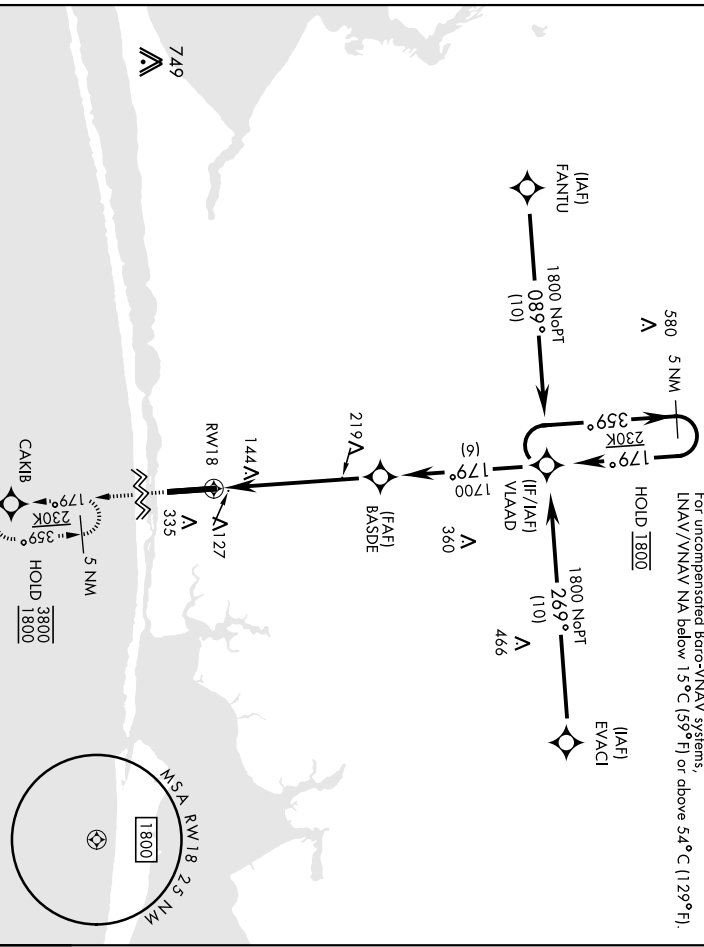
RNAV (GPS) RWY 18

AL-734 [USAF]

HURIBURT FLD. (KHRT)

S/SAS Chen 57304 W18A	APCH CRS 179°	Rwy/ldg 9600 TDZE 35 Appr Elev 38	SALSF 	MISSED APPROACH: Climb to 1800 direct CAKIB and hold.
RNP APCH: DME/DME RNP - 0.3 NA.	ATIS 134.475 360.675	EGLN APP CON 125.1 281.45 (271° - 089°) 132.1 360.6 (090° - 270°)	HURIBURT TOWER 126.5 351.675	GND CON 123.975 275.8

For uncompensated Baro-VNAV systems, LNAV/VNAV NA below 15°C (59°F) or above 54°C (129°F).



SE-3, 22 FEB 2024 to 21 MAR 2024

SE-3, 22 FEB 2024 to 21 MAR 2024

EMERG SAFE ALT 100 NM 3700					
5 NM Holding Pattern VLAAD 1800 179° 359°	VGS1 and RNAV glidepath not coincident (VGS1 Angle 2.50/TCH 41) BASDE 1700 179° 1.6 NM to RWY 18	1800 CAKIB	ELEV 38 TDZE 35	RWY 18 179° to RWY 18 81 TDZE 35	
GP 2.51° TCH 45	6.6 NM	1800 CAKIB	180	HELICOPTER HOVER SPOTS 100 36	
CATEGORY	A	B	C	D	E
LPV DA	285-¾	250	250	(300-¾)	
LNAV/VNAV DA*	427-7/8	392	392	(400-7/8)	
LNAV MDA**	500-¾ (500-¾)	465	465	(500-1½)	
CIRCLING	640-1	602 (700-1)	640-1¾	840-2½	840-2¾
			602 (700-1¾)	802 (900-2½)	802 (900-2¾)

MARY ESTHER, FLORIDA
 Arrdt 2 14JUL22

HURIBURT FLD. (KHRT)
RNAV (GPS) RWY 18

30°26'N-86°41'W

TACAN RWY 36

[USAF]

HURBURT FLD. (KHRT)

TACAN HRT Chan 45	APCH CRS 352°	Rwy/Idg TDZE Appt Elev	9600 37 38
----------------------	------------------	------------------------------	---------------------------------------

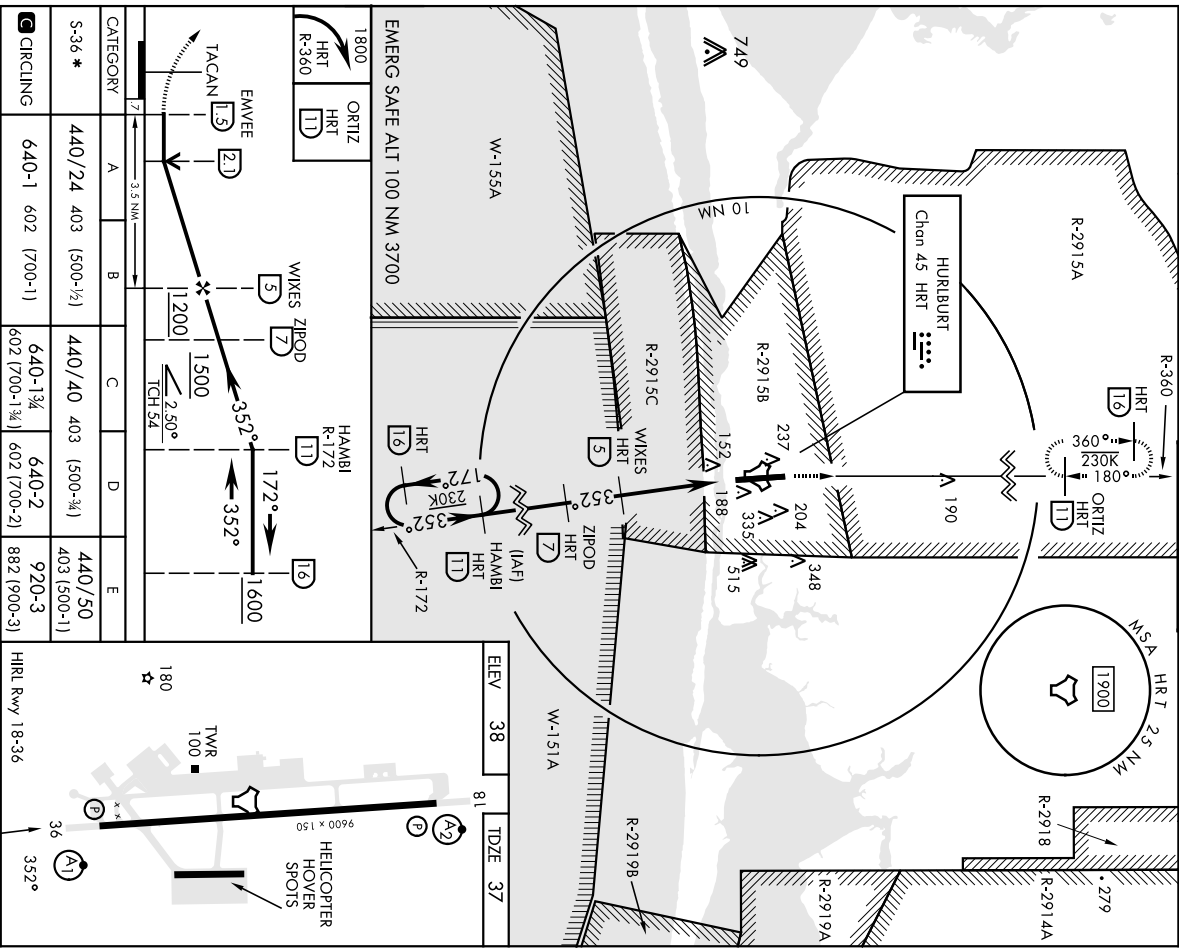
ALSIF-1 	A1
-------------	----

MISSED APPROACH: Climb to 1800 on R-360 to ORTTZ/11 DME and hold.

ATIS 134.475 360.675	EGJUN APP CON 125.1 281.45 (271° - 089°) 132.1 360.6 (090° - 270°)
-------------------------	--

HURBURT TOWER 126.5 351.675

GND CON 123.975 275.8



SE-3, 22 FEB 2024 to 21 MAR 2024

SE-3, 22 FEB 2024 to 21 MAR 2024

30°26'N-86°41'W

TACAN RWY 36

HURBURT FLD. (KHRT)