

WAAS CH 99628 W01A	APP CRS 012°	Rwy ldg TDZE Apt Elev	4506 3150 3150
--	------------------------	-----------------------------	---

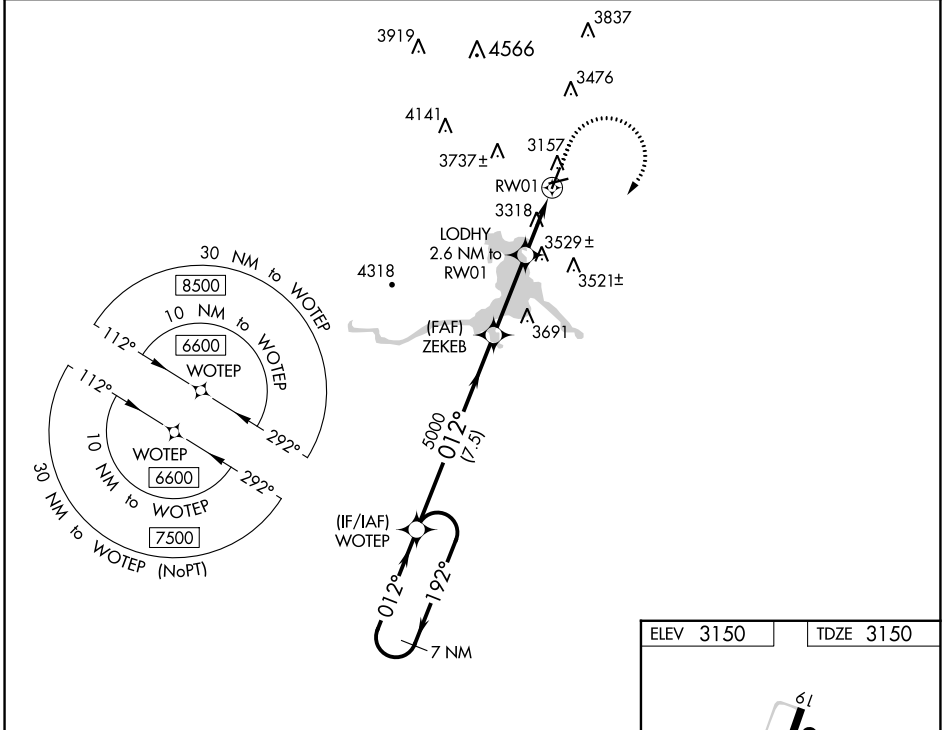
RNAV (GPS) RWY 1

HOT SPRINGS MUNI (HSR)

▽ Rwy 1 helicopter visibility reduction below 3/4 NA. DME/DME RNP-0.3 NA.
▲ NA Circling NA west of Rwy 1-19. Use Chadron, NE altimeter setting, when not received use Rapid City Rgnl altimeter setting and increase all MDA 20 feet, increase LNAV Cat B visibility 1/4 mile. Circling NA to Rwy 6 and 24.

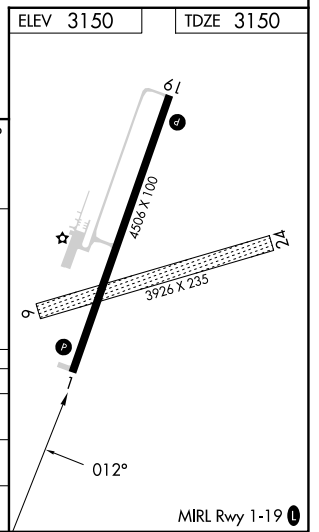
MISSED APPROACH: Climb to 3900, then climbing right turn to 6600 direct WOTEP and hold.

CDR ASOS 118.05	DENVER CENTER 127.95 338.2	GCO 121.725	AUNICOM 122.8 (CTAF)
---------------------------	--------------------------------------	-----------------------	--------------------------------



NC-1, 22 FEB 2024 to 21 MAR 2024

NC-1, 22 FEB 2024 to 21 MAR 2024



7 NM Holding Pattern	WOTEP	3900	6600	WOTEP
6600	←192°	012°→	012°	
		5000	4000	RW01
	7.5 NM	3.1 NM	2.6 NM	
CATEGORY	A	B	C	D
LP MDA	3840-1	690 (700-1)	3840-2	690 (700-2)
LNAV MDA	3880-1	730 (800-1)	3880-2	730 (800-2)
C CIRCLING	3880-1 730 (800-1)	3900-1 750 (800-1)	3980-2½ 830 (900-2½)	4100-3 950 (1000-3)

WAAS CH 56628 W19A	APP CRS 192°	Rwy Idg TDZE Apt Elev	4506 3146 3150
--	------------------------	-----------------------------	---

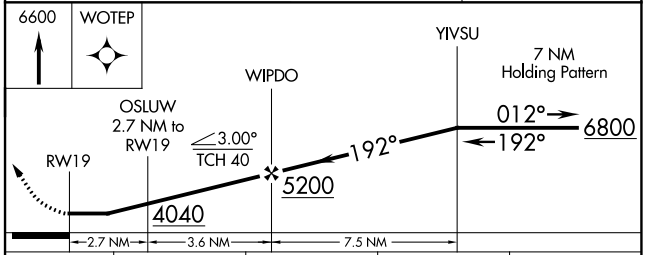
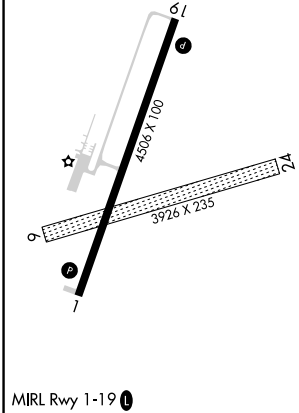
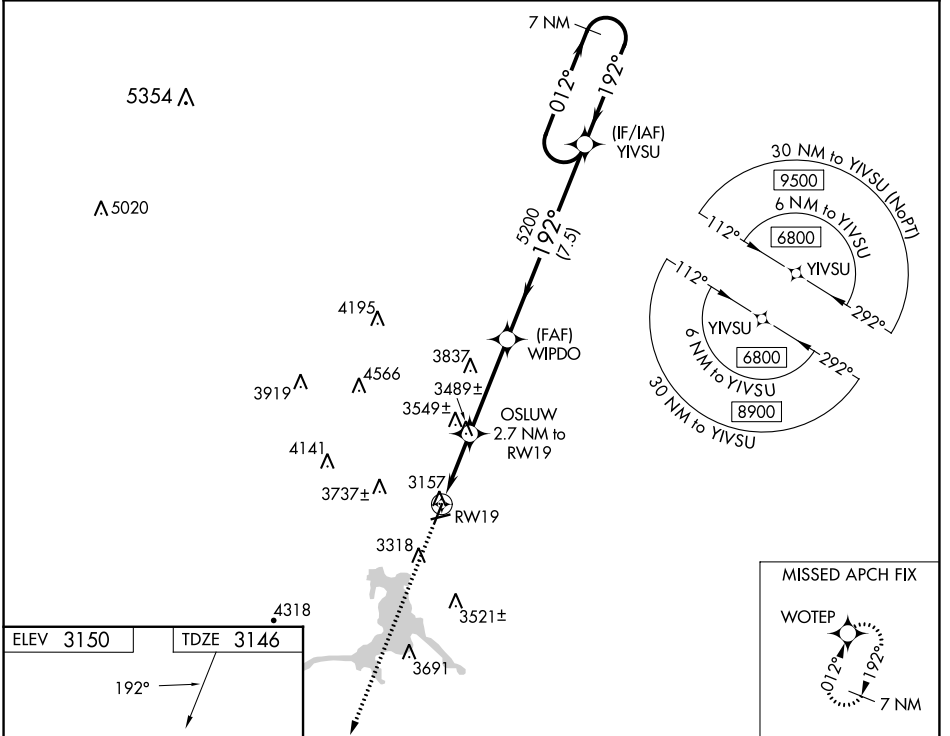
RNAV (GPS) RWY 19

HOT SPRINGS MUNI (HSR)

▼ Rwy 19 helicopter visibility reduction below ¾ SM NA. DME/DME RNP-0.3 NA.
▲ NA Circling NA to Rwy 6 and 24. Circling NA west of Rwy 1-19.
 Use Chadron, NE altimeter setting, when not received use Rapid City Rgnl altimeter setting and increase all MDA 20 feet, increase LNAV Cat C and D visibility ½ SM.

MISSED APPROACH: Climb to 6600 direct WOTEP and hold.

CDR ASOS 118.05	DENVER CENTER 127.95 338.2	GCO 121.725	AUNICOM 122.8 (CTAF) 0
---------------------------	--------------------------------------	-----------------------	----------------------------------



CATEGORY	A	B	C	D
LP MDA	3840-1 694 (700-1)		3840-2 694 (700-2)	
LNAV MDA	3900-1 754 (800-1)	3900-1¼ 754 (800-1¼)	3900-2 754 (800-2)	
C CIRCLING	3900-1 750 (800-1)		3980-2½ 830 (900-2½)	4100-3 950 (1000-3)

NC-1, 22 FEB 2024 to 21 MAR 2024

NC-1, 22 FEB 2024 to 21 MAR 2024