

LOC I-HUT 110.1	APP CRS 134°	Rwy Idg 7003
		TDZE 1525
		Apt Elev 1543

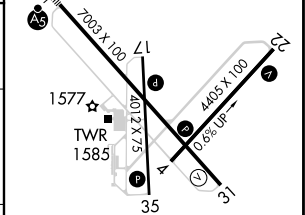
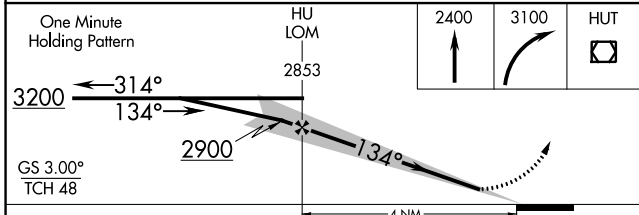
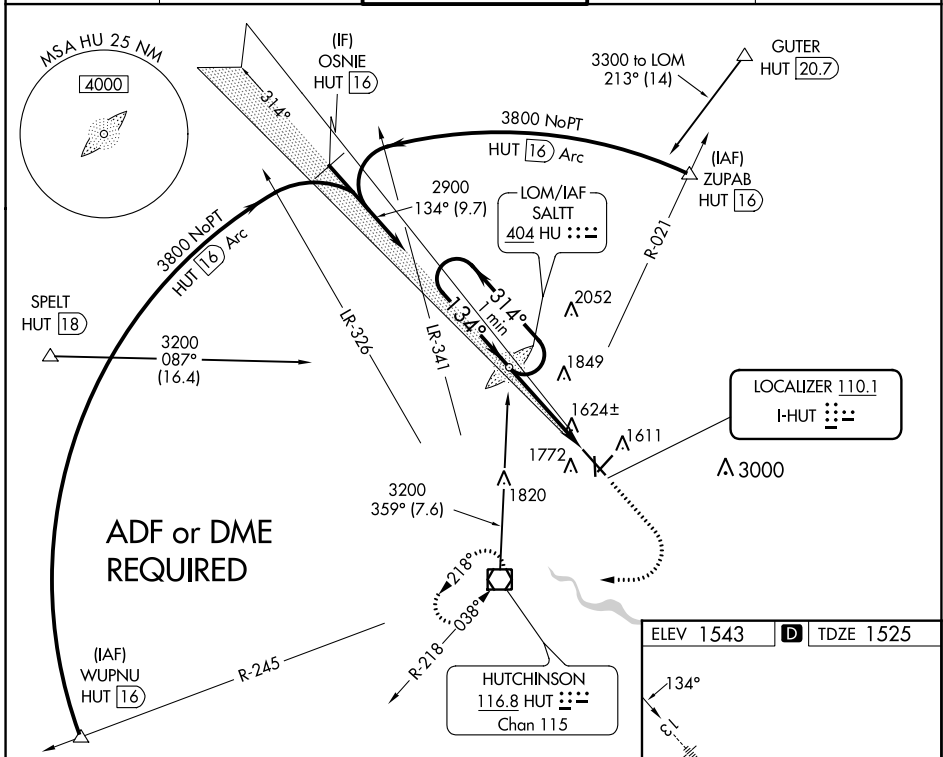
ILS or LOC RWY 13

HUTCHINSON RGNL (HUT)

⚠ When VGSi inop, Circling Rwy 22 NA at night.
 For inop ALS, increase S-LOC Rwy 13 Cat C/D visibility to RVR 5500.
 *RVR 1800 authorized with use of FD or AP or HUD to DA.

MALSR
 MISSED APPROACH: Climb to 2400 then climbing right turn to 3100 direct HUT VOR/DME and hold.

ATIS 124.25	WICHITA APP CON 125.5 306.2	HUTCHINSON TOWER * 118.5 (CTAF) 363.0	GND CON 121.9	UNICOM 122.95
-----------------------	---------------------------------------	---	-------------------------	-------------------------



CATEGORY	A	B	C	D
S-ILS 13*	1725/24		200 (200-½)	
S-LOC 13	1880/24	355 (400-½)	1880/30	355 (400-¾)
C CIRCLING	2080-1	537 (600-1)	2200-1¾ 657 (700-1¾)	2720-3 1177 (1200-3)

REIL Rwys 4, 22 and 31
 HIRL Rwy 13-31
 MIRL Rwys 4-22 and 17-35
 FAF to MAP 4 NM

Knots	60	90	120	150	180
Min:Sec	4:00	2:40	2:00	1:36	1:20

LOC I-HUT 110.1	APP CRS 314°	Rwy Idg TDZE Apt Elev	7003 1520 1543
---------------------------	------------------------	-----------------------------	---

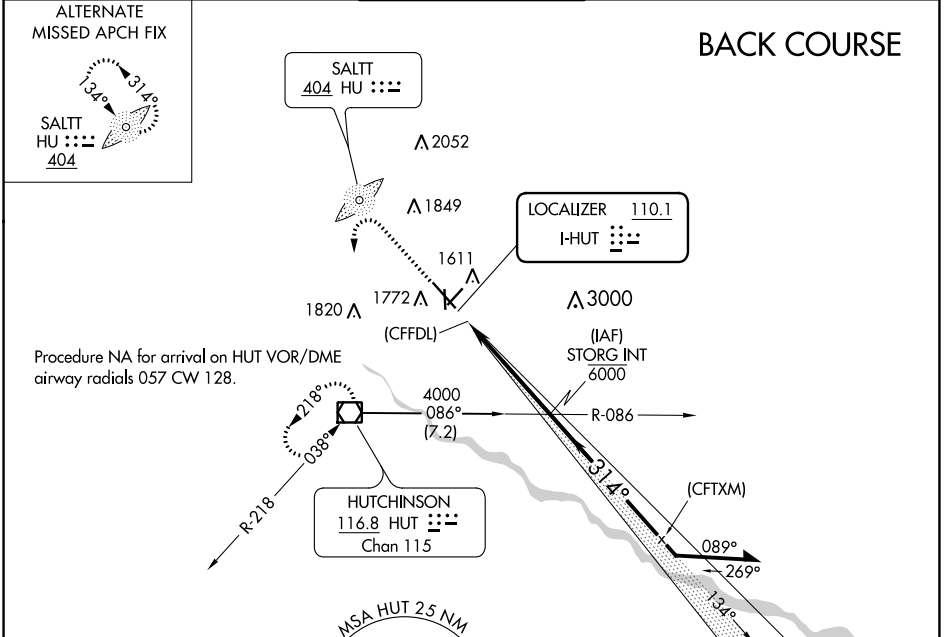
LOC BC RWY 31

HUTCHINSON RGNL (HUT)

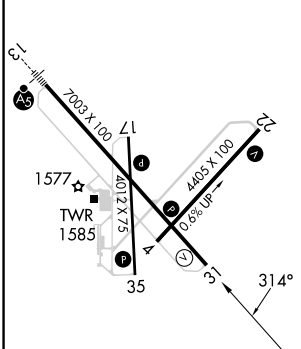
⚠ Circling to Rwy 22 NA at night.
Rwy 31 helicopter visibility reduction below 3/4 SM NA.

MISSED APPROACH: Climb to 2200 then climbing left turn to 3100 direct HUT VOR/DME and hold.

ATIS 124.25	WICHITA APP CON 125.5 306.2	HUTCHINSON TOWER ★ 118.5 (CTAF) 363.0	GND CON 121.9	UNICOM 122.95
-----------------------	---------------------------------------	---	-------------------------	-------------------------

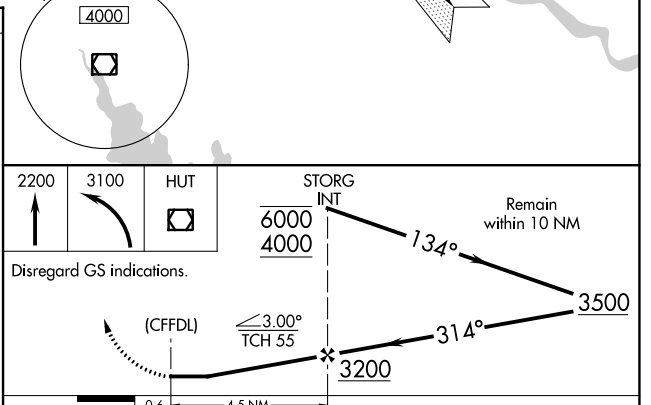


ELEV 1543	D	TDZE 1520
-----------	----------	-----------



REIL Rwys 4, 22 and 31
HIRL Rwy 13-31
MIRL Rwys 4-22 and 17-35
FAF to MAP 4.5 NM

Knots	60	90	120	150	180
Min:Sec	4:30	3:00	2:15	1:48	1:30



CATEGORY	A	B	C	D
S-LOC 31	1940-1	420 (400-1)	1940-1 1/8	420 (400-1 1/8)
C CIRCLING	2080-1	537 (600-1)	2200-1 3/4 657 (700-1 3/4)	2720-3 1177 (1200-3)

NC-2, 22 FEB 2024 to 21 MAR 2024

NC-2, 22 FEB 2024 to 21 MAR 2024

LOM HU 404	APP CRS 134°	Rwy Idg 7003
		TDZE 1525
		Apt Elev 1543

NDB RWY 13

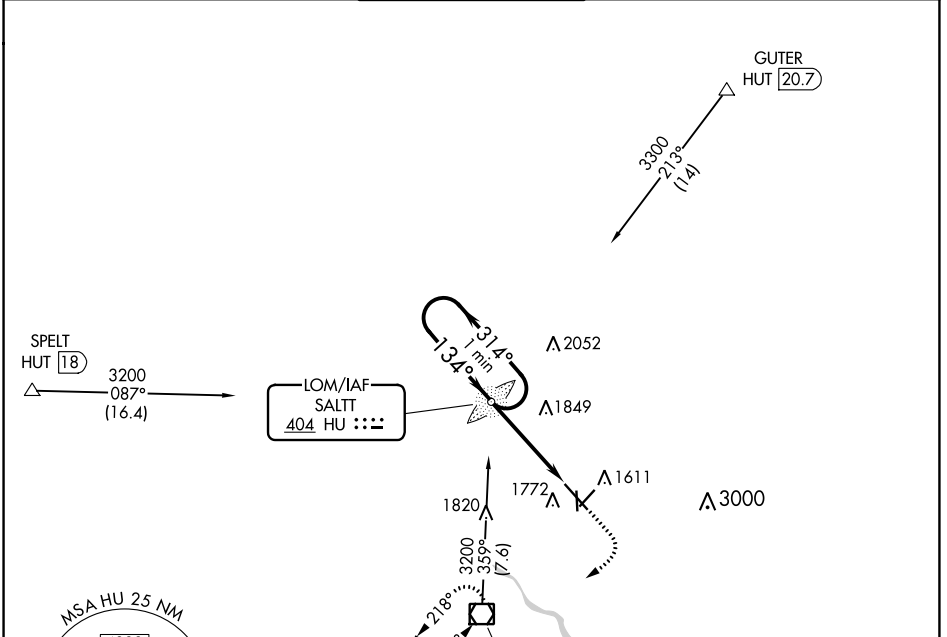
HUTCHINSON RGNL (HUT)

▼ Circling to Rwy 22 NA at night.
▲ For inop ALS, increase S-13 Cat A/B visibility to RVR 5500, and Cat C/D to 1 1/8 SM.



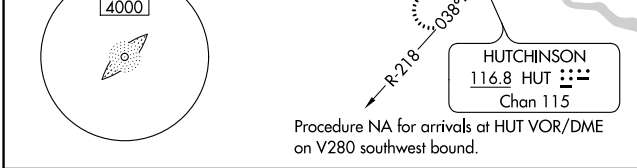
MISSED APPROACH: Climb to 2400 then climbing right turn to 3100 direct HUT VOR/DME and hold.

ATIS 124.25	WICHITA APP CON 125.5 306.2	HUTCHINSON TOWER * 118.5 (CTAF) 363.0	GND CON 121.9	UNICOM 122.95
-----------------------	---------------------------------------	---	-------------------------	-------------------------

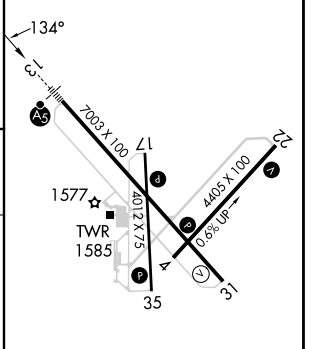
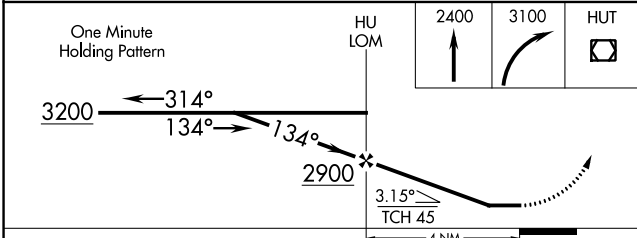


NC-2, 22 FEB 2024 to 21 MAR 2024

NC-2, 22 FEB 2024 to 21 MAR 2024



ELEV 1543	D TDZE 1525
-----------	--------------------



CATEGORY	A	B	C	D
S-13	2200/40	675 (700-3/4)	2200-1 1/2	675 (700-1 1/2)
C CIRCLING	2200-1	657 (700-1)	2200-1 7/8	2720-3
			657 (700-1 1/8)	1177 (1200-3)

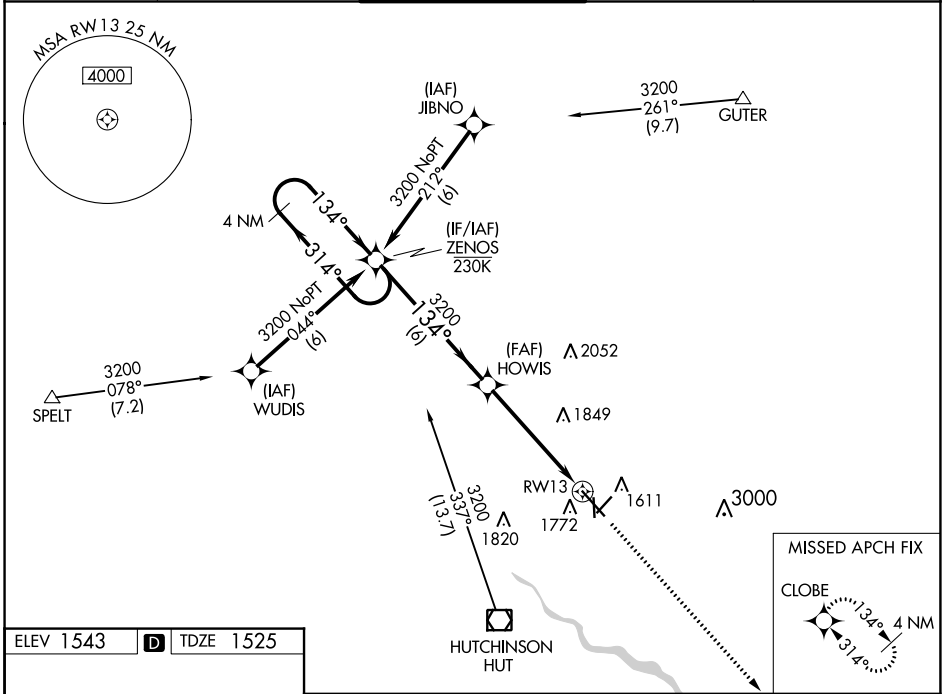
REIL Rwys 4, 22 and 31	HIRL Rwy 13-31	MIRL Rwys 4-22 and 17-35			
FAF to MAP 4 NM					
Knots	60	90	120	150	180
Min:Sec	4:00	2:40	2:00	1:36	1:20

WAAS CH 50210 W13A	APP CRS 134°	Rwy Idg TDZE Apt Elev	7003 1525 1543
--	------------------------	-----------------------------	---

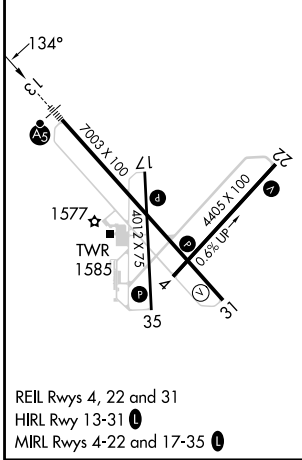
RNAV (GPS) RWY 13

HUTCHINSON RGNL (HUT)

RNP APCH-GPS		MALSR	MISSED APPROACH: Climb to 3600 direct CLOBE and hold.	
<p>⚠ Circling to Rwy 22 NA at night. For uncompensated Baro-VNAV systems, LNAV/VNAV NA below -18°C or above 54°C. # RVR 1800 authorized with use of FD or HUD to DA.</p>				
ATIS 124.25	WICHITA APP CON 125.5 306.2	HUTCHINSON TOWER * 118.5 (CTAF) 363.0	GND CON 121.9	UNICOM 122.95



ELEV 1543	D	TDZE 1525
-----------	----------	-----------



CATEGORY	A	B	C	D
LPV DA#	1725/24 200 (200-½)			
LNAV/VNAV DA	1932/40 407 (400-¾)			
LNAV MDA	2120/24	595 (600-½)	2120-1¼	595 (600-1¼)
C CIRCLING	2120-1	577 (600-1)	2200-1¾ 657 (700-1¾)	2720-3 1177 (1200-3)

NC-2, 22 FEB 2024 to 21 MAR 2024

NC-2, 22 FEB 2024 to 21 MAR 2024

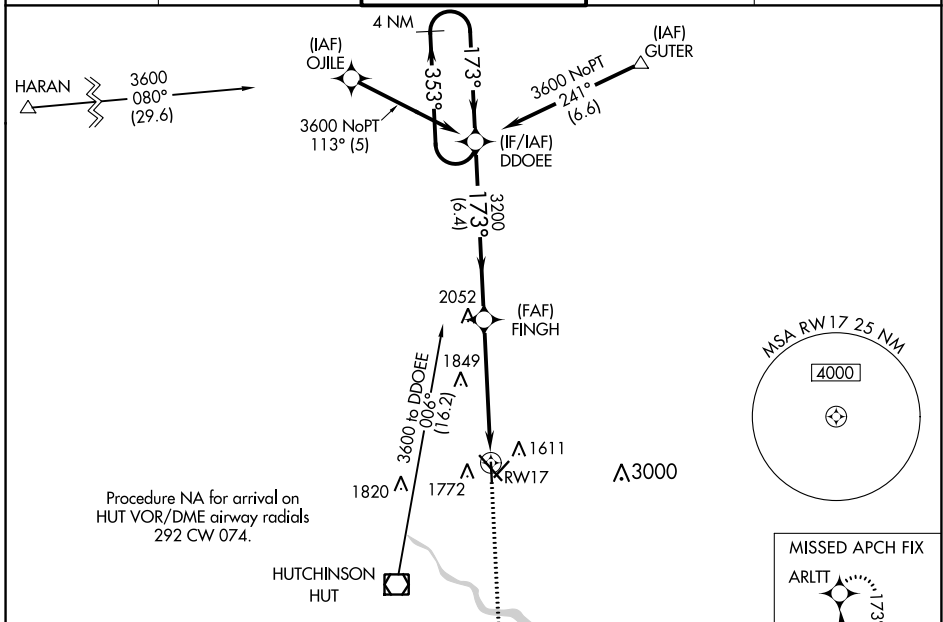
WAAS CH 81941 W17A	APP CRS 173°	Rwy Idg TDZE Apt Elev	4012 1523 1543
--	------------------------	-----------------------------	---

RNAV (GPS) RWY 17

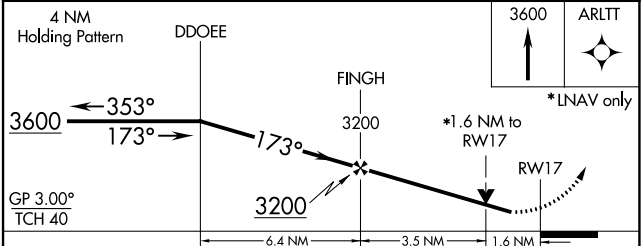
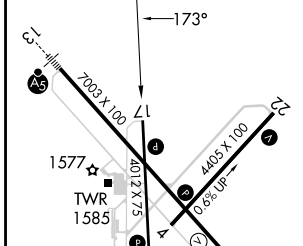
HUTCHINSON RGNL (HUT)

⚠ Circling to Rwy 22 NA at night. For uncompensated Baro-VNAV systems, LNAV/VNAV NA below -18°C (0°F) or above 54°C (130°F). DME/DME RNP-0.3 NA. MISSED APPROACH: Climb to 3600 direct ARLTT and hold.

ATIS 124.25	WICHITA APP CON 125.5 306.2	HUTCHINSON TOWER * 118.5 (CTAF) 363.0	GND CON 121.9	UNICOM 122.95
-----------------------	---------------------------------------	---	-------------------------	-------------------------



ELEV 1543	D	TDZE 1523
-----------	----------	-----------



CATEGORY	A	B	C	D
LPV DA	1889-1 366 (400-1)			NA
LNAV/VNAV DA	2078-1½ 555 (600-1½)			NA
LNAV MDA	2060-1	537 (600-1)	2060-1½ 537 (600-1½)	NA
C CIRCLING	2080-1	537 (600-1)	2200-1¾ 657 (700-1¾)	NA

NC-2, 22 FEB 2024 to 21 MAR 2024

NC-2, 22 FEB 2024 to 21 MAR 2024

APP CRS 218°	Rwy Idg 4401
	TDZE 1543
	Apt Elev 1543

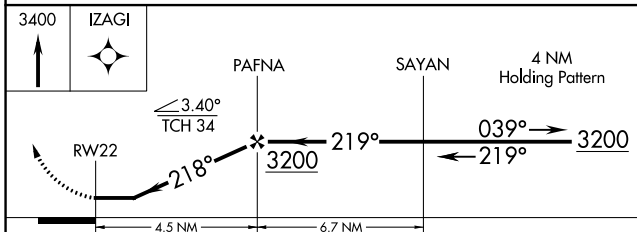
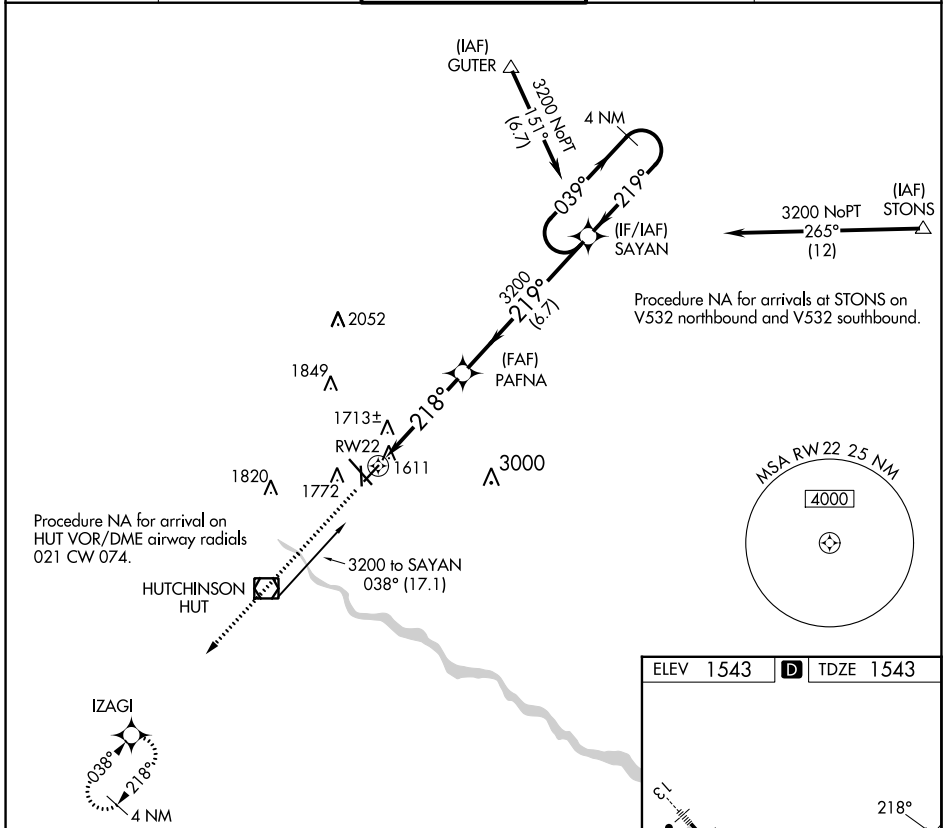
RNAV (GPS) RWY 22

HUTCHINSON RGNL (HUT)

▼ Rwy 22 helicopter visibility reduction below 1 SM NA. DME/DME RNP-0.3 NA. Straight-in and Circling Rwy 22 NA at night.

MISSED APPROACH: Climb to 3400 direct IZAGI and hold.

ATIS 124.25	WICHITA APP CON 125.5 306.2	HUTCHINSON TOWER* 118.5 (CTAF) 363.0	GND CON 121.9	UNICOM 122.95
-----------------------	---------------------------------------	--	-------------------------	-------------------------



ELEV 1543	D TDZE 1543
-----------	--------------------

Diagram showing RWY 22 (7003 X 100) and RWY 13-31 (4405 X 100) with taxiway 35, 31, 33, 34, 32, 30, 29, 28, 27, 26, 25, 24, 23, 22, 21, 20, 19, 18, 17, 16, 15, 14, 13, 12, 11, 10, 9, 8, 7, 6, 5, 4, 3, 2, 1. Includes TWR 1585 and REIL/HIRL/MIRL markings.

CATEGORY	A	B	C	D
LNVA MDA	1980-1	437 (500-1)	1980-1¼ 437 (500-1¼)	NA
C CIRCLING	2080-1	537 (600-1)	2200-1¾ 657 (700-1¾)	NA

NC-2, 22 FEB 2024 to 21 MAR 2024

NC-2, 22 FEB 2024 to 21 MAR 2024

WAAS CH 53728 W31A	APP CRS 314°	Rwy Idg TDZE 1520 Apt Elev 1543	7003
--	------------------------	---	-------------

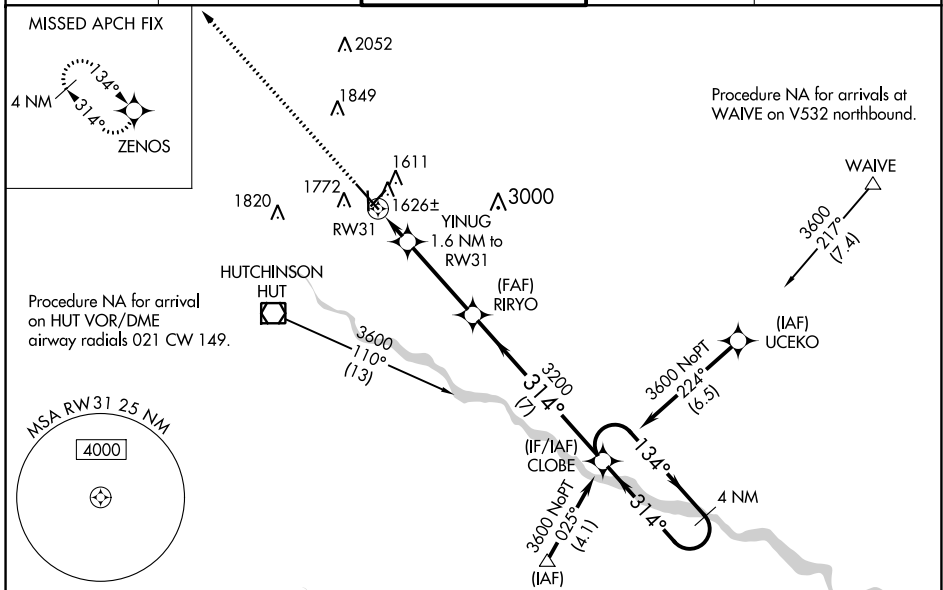
RNAV (GPS) RWY 31

HUTCHINSON RGNL (HUT)

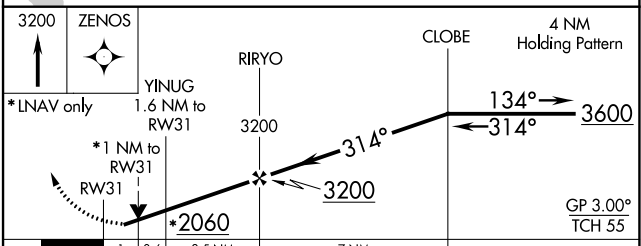
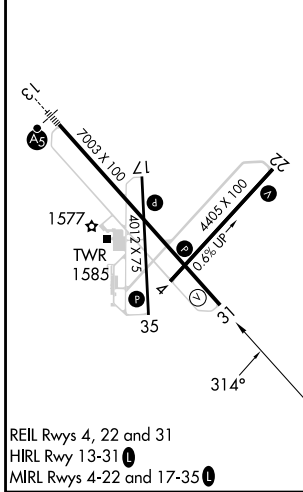
⚠ Circling to Rwy 22 NA at night. For uncompensated Baro-VNAV systems, LNAV/VNAV NA below -18°C (0°F) or above 54°C (130°F). Rwy 31 helicopter visibility reduction below ¾ SM NA. DME/DME RNP-0.3 NA.

MISSED APPROACH: Climb to 3200 direct ZENOS and hold.

ATIS 124.25	WICHITA APP CON 125.5 306.2	HUTCHINSON TOWER * 118.5 (CTAF) 363.0	GND CON 121.9	UNICOM 122.95
-----------------------	---------------------------------------	---	-------------------------	-------------------------



ELEV 1543	D	TDZE 1520
-----------	----------	-----------



CATEGORY	A	B	C	D
LPV DA		1770-¾	250 (300-¾)	
LNAV/VNAV DA		1812-⅞	292 (300-⅞)	
LNAV MDA		1880-1	360 (400-1)	
C CIRCLING	2080-1	537 (600-1)	2200-1¾ 657 (700-1¾)	2720-3 1177 (1200-3)

NC-2, 22 FEB 2024 to 21 MAR 2024

NC-2, 22 FEB 2024 to 21 MAR 2024

WAAS CH 65741 W35A	APP CRS 353°	Rwy Idg TDZE Apt Elev	4012 1521 1543
--	------------------------	-----------------------------	---

RNAV (GPS) RWY 35

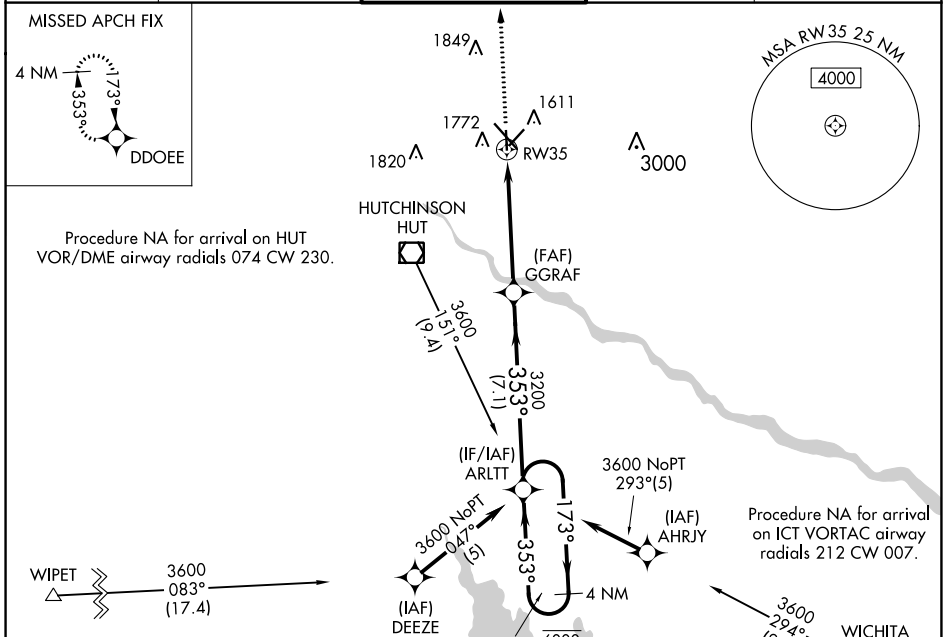
HUTCHINSON RGNL (HUT)

RNP APCH - GPS.

For uncompensated Baro-VNAV systems, LNAV/VNAV NA below -18°C or above 54°C.
Circling Rwy 22 NA at night.

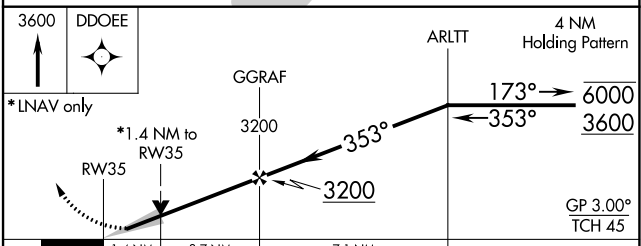
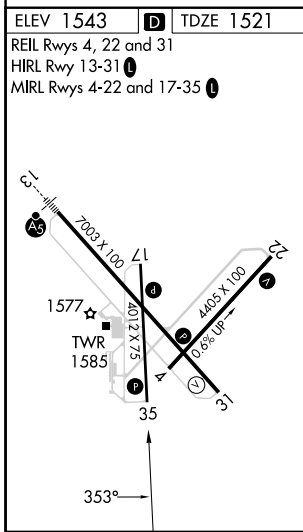
MISSED APPROACH:
Climb to 3600 direct DDOEE and hold.

ATIS 124.25	WICHITA APP CON 125.5 306.2	HUTCHINSON TOWER * 118.5 (CTAF) 363.0	GND CON 121.9	UNICOM 122.95
-----------------------	---------------------------------------	---	-------------------------	-------------------------



NC-2, 22 FEB 2024 to 21 MAR 2024

NC-2, 22 FEB 2024 to 21 MAR 2024



CATEGORY	A	B	C	D
LPV DA	1721-1	200 (200-1)		NA
LNAV/VNAV DA	1887-1	366 (400-1)		NA
LNAV MDA	2000-1	479 (500-1)	2000-1 3/8 479 (500-1 3/8)	NA
CIRCLING	2080-1	537 (600-1)	2200-1 3/4 657 (700-1 3/4)	NA

WAAS CH 56420 W04A	APP CRS 038°	Rwy Idg TDZE 1522 Apt Elev 1543	4401
--	------------------------	---	-------------

RNAV (GPS) RWY 4

HUTCHINSON RGNL (HUT)

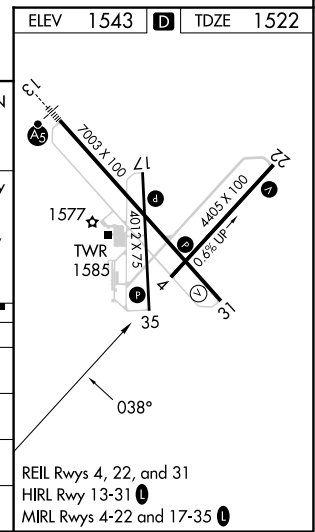
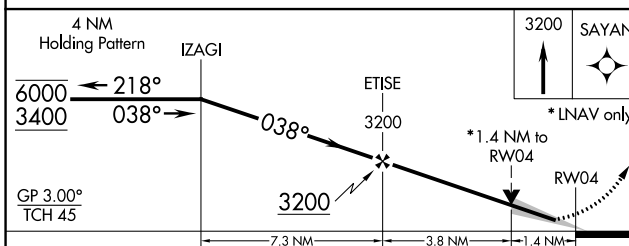
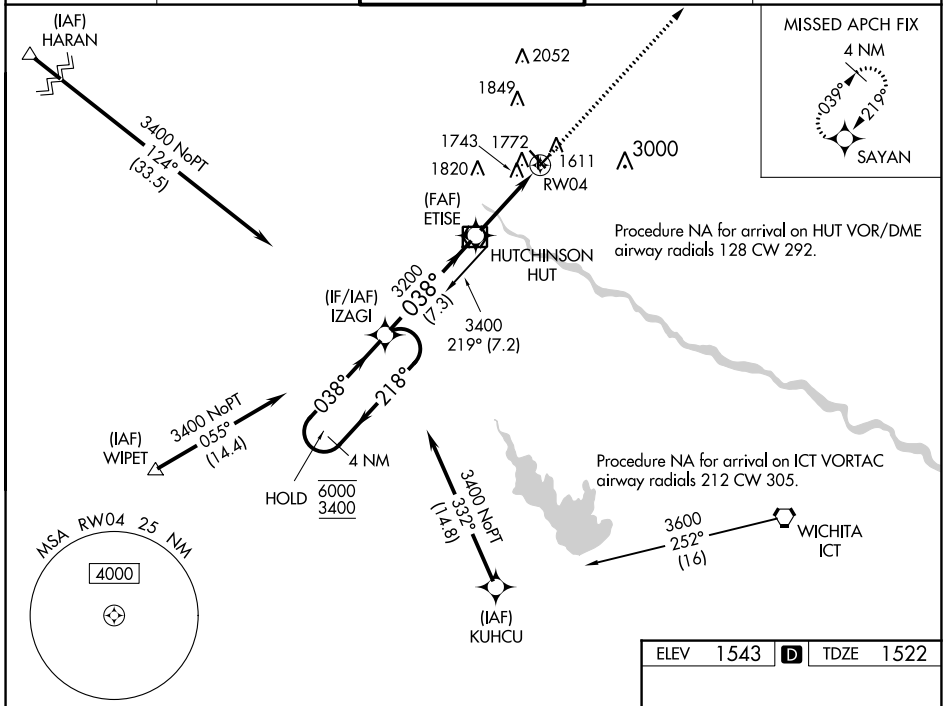
RNP APCH - GPS.

⚠ For uncompensated Baro-VNAV systems, LNAV/VNAV NA below -18°C or above 54°C.

⚠ Circling Rwy 22 NA at night.

MISSED APPROACH:
Climb to 3200 direct SAYAN and hold.

ATIS 124.25	WICHITA APP CON 125.5 306.2	HUTCHINSON TOWER ★ 118.5 (CTAF) 0 363.0	GND CON 121.9	UNICOM 122.95
-----------------------	---------------------------------------	---	-------------------------	-------------------------



CATEGORY	A	B	C	D
LPV DA	1722-1 200 (200-1)			NA
LNAV/VNAV DA	2064-1 5/8 542 (600-1%)			NA
LNAV MDA	2000-1	478 (500-1)	2000-1 3/8 478 (500-1%)	NA
C CIRCLING	2080-1	537 (600-1)	2200-1 3/4 657 (700-1%)	NA

NC-2, 22 FEB 2024 to 21 MAR 2024

NC-2, 22 FEB 2024 to 21 MAR 2024

VOR/DME HUT 116.8 Chan 115	APP CRS 218°	Rwy ldg TDZE 1543 Apt Elev 1543
--	------------------------	---

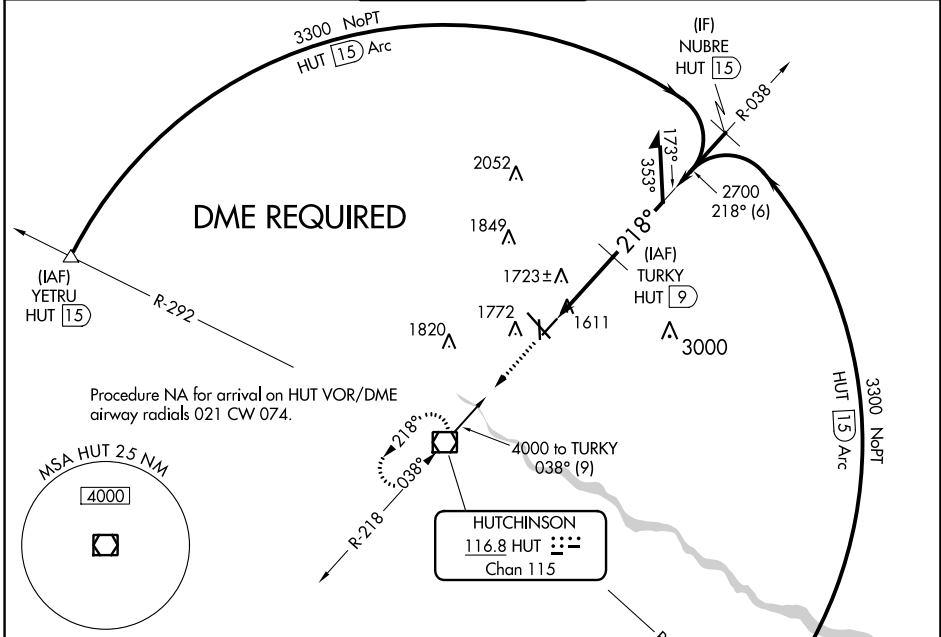
VOR RWY 22

HUTCHINSON RGNL (HUT)

▼ Circling to Rwy 22 NA at night.
Rwy 22 helicopter visibility reduction below 1 SM NA.
DME required.

MISSED APPROACH: Climb to 3100 direct HUT VOR/DME and hold.

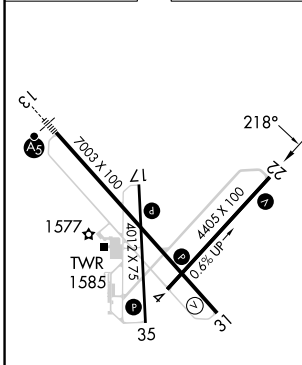
ATIS 124.25	WICHITA APP CON 125.5 306.2	HUTCHINSON TOWER * 118.5 (CTAF) 363.0	GND CON 121.9	UNICOM 122.95
-----------------------	---------------------------------------	--	-------------------------	-------------------------



NC-2, 22 FEB 2024 to 21 MAR 2024

NC-2, 22 FEB 2024 to 21 MAR 2024

ELEV 1543	D	TDZE 1543
-----------	----------	-----------



CATEGORY	A	B	C	D
S-22	1980-1	437 (500-1)	1980-1¼ 437 (500-1¼)	NA
C CIRCLING	2080-1	537 (600-1)	2200-1¾ 657 (700-1¾)	NA

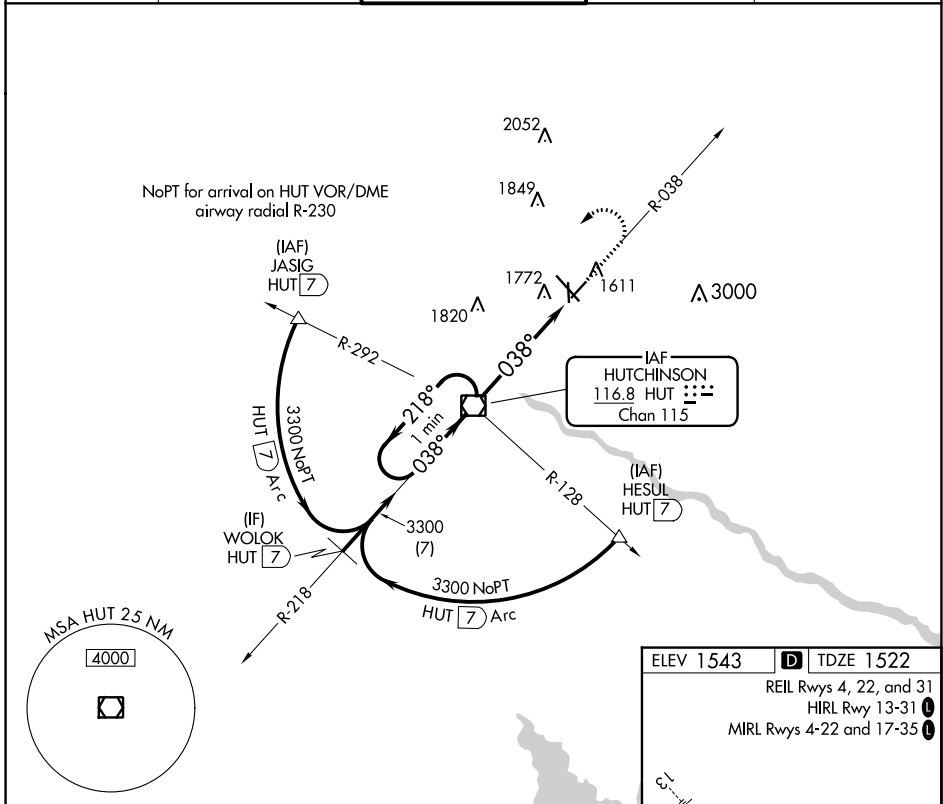
VOR/DME HUT 116.8 Chan 115	APP CRS 038°	Rwy Idg TDZE 1522 Apt Elev 1543
--	------------------------	---

VOR RWY 4

HUTCHINSON RGNL(HUT)

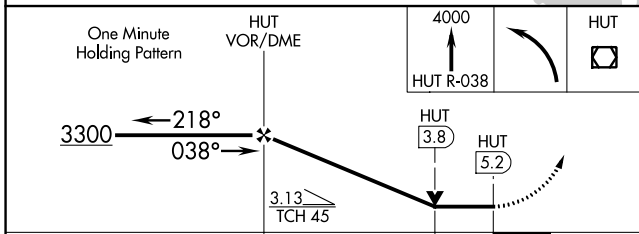
▼ Circling to Rwy 22 NA at night. MISSED APPROACH: Climb to 4000 on HUT VOR/DME R-038 then left turn direct HUT VOR/DME and hold.

ATIS 124.25	WICHITA APP CON 125.5 306.2	HUTCHINSON TOWER * 118.5(CTAF) 363.0	GND CON 121.9	UNICOM 122.95
-----------------------	---------------------------------------	--	-------------------------	-------------------------



NC-2, 22 FEB 2024 to 21 MAR 2024

NC-2, 22 FEB 2024 to 21 MAR 2024



ELEV 1543 **D** TDZE 1522

REIL Rwy 4, 22, and 31
HIRL Rwy 13-31 **L**
MIRL Rwy 4-22 and 17-35 **L**

FAC to MAP 5.2 NM

Knots	60	90	120	150	180
Min:Sec	5:12	3:28	2:36	2:05	1:44

CATEGORY	A	B	C	D
S-4	2040-1 518 (500-1)		2040-1 $\frac{3}{8}$ 518 (500-1 $\frac{3}{8}$)	NA
C CIRCLING	2080-1 537 (600-1)		2200-1 $\frac{3}{4}$ 657 (700-1 $\frac{3}{4}$)	NA