

HAVRE, MONTANA


AL-5575 (FAA)

21 280

WAAS CH 48816 W26A	APP CRS 257°	Rwy Idg TDZE Apt Elev	5205 2586 2591
--	------------------------	-----------------------------	---

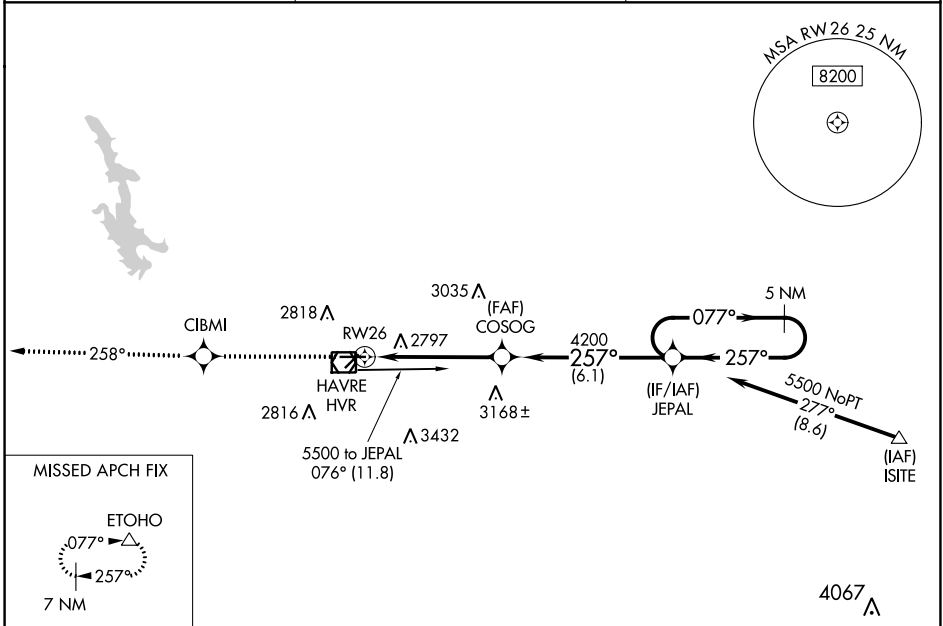
RNAV (GPS) RWY 26

HAVRE CITY-COUNTY (HVR)

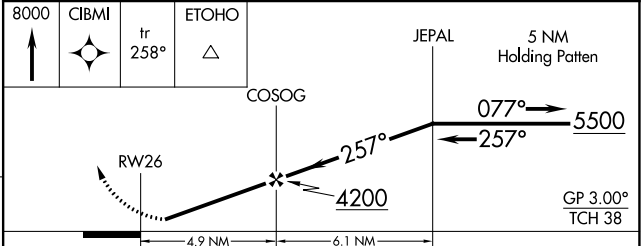
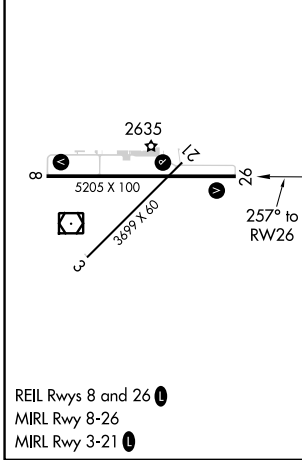
RNP APCH-GPS.
 For uncompensated Baro-VNAV systems, LNAV/VNAV NA below -20°C or above 54°C.

MISSED APPROACH: Climb to 8000 direct CIBMI and on track 258° to ETOHO and hold, continue climb-in-hold to 8000.

ASOS 135.225	SALT LAKE CENTER 133.4 285.4	UNICOM 122.8 (CTAF) 0
------------------------	--	---------------------------------



ELEV 2591	D	TDZE 2586
-----------	----------	-----------



CATEGORY	A	B	C	D
LPV DA	2836- ³ / ₄		250 (300- ³ / ₄)	
LNAV/VNAV DA	3097-1 ³ / ₄		511 (600-1 ³ / ₄)	
LNAV MDA	3060-1	474 (500-1)	3060-1 ¹ / ₄ 474 (500-1 ¹ / ₄)	3060-1 ¹ / ₂ 474 (500-1 ¹ / ₂)
CIRCLING	3080-1 489 (500-1)	3120-1 529 (600-1)	3360-2 ¹ / ₄ 769 (800-2 ¹ / ₄)	3740-3 1149 (1200-3)

HAVRE, MONTANA
 Orig-C 07OCT21

48°33'N-109°46'W

HAVRE CITY-COUNTY (HVR) RNAV (GPS) RWY 26

NW-1, 22 FEB 2024 to 21 MAR 2024

NW-1, 22 FEB 2024 to 21 MAR 2024

WAAS CH 99316 W08A	APP CRS 077°	Rwy Idg TDZE Apt Elev	5205 2585 2591
--	------------------------	-----------------------------	---

RNAV (GPS) RWY 8

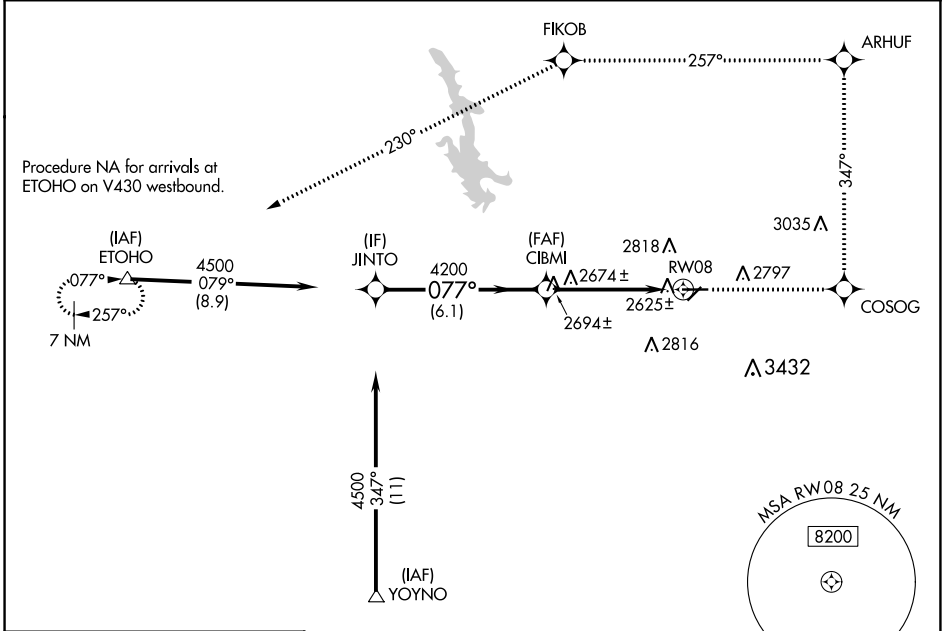
HAVRE CITY-COUNTY (HVR)

RNP APCH-GPS.

⚠ For uncompensated Baro-VNAV systems,
⚠ LNAV/VNAV NA below -20°C or above 54°C.

MISSED APPROACH: Climb to 8000 direct COSOG and left on track 347° to ARHUF and left turn on track 257° to FIKOB and on track 230° to ETOHO and hold.

ASOS 135.225	SALT LAKE CENTER 133.4 285.4	UNICOM 122.8 (CTAF)
------------------------	--	-------------------------------

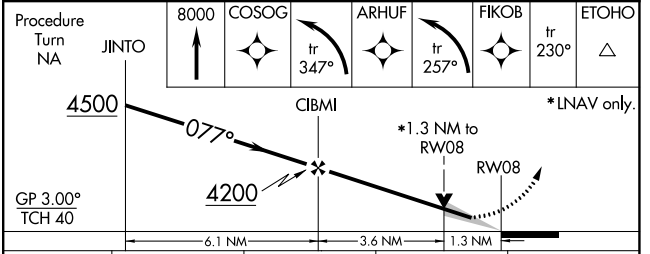
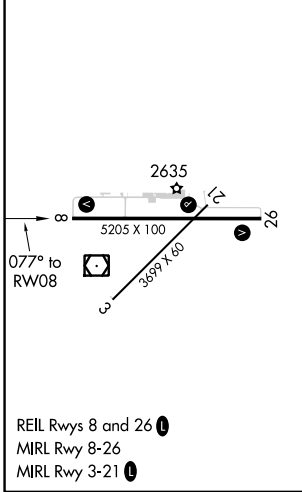


NW-1, 22 FEB 2024 to 21 MAR 2024

NW-1, 22 FEB 2024 to 21 MAR 2024

ELEV 2591	D	TDZE 2585
-----------	----------	-----------

Procedure NA for arrivals at YOYNO on V257-611 southwest bound.



CATEGORY	A	B	C	D
LPV DA	2835-1 250 (300-1)			
LNAV/VNAV DA	2906-1¼ 321 (400-1¼)			
LNAV MDA	3020-1	435 (500-1)	3020-1¼ 435 (500-1¼)	3020-1½ 435 (500-1½)
CIRCLING	3080-1 489 (500-1)	3120-1 529 (600-1)	3360-2¼ 769 (800-2¼)	3740-3 1149 (1200-3)

VOR/DME HVR 114.65 Chan 93(Y)	APP CRS 244°	Rwy Idg TDZE Apt Elev	5205 2586 2591
---	------------------------	-----------------------------	---

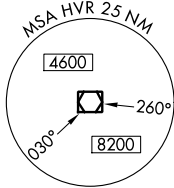
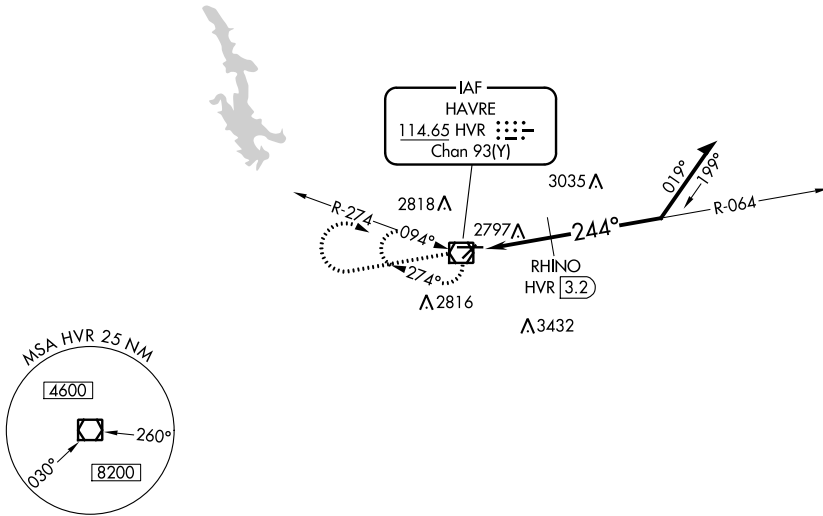
VOR RWY 26

HAVRE CITY-COUNTY (HVR)

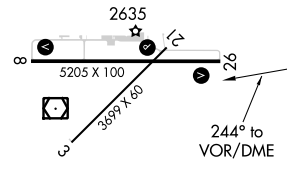
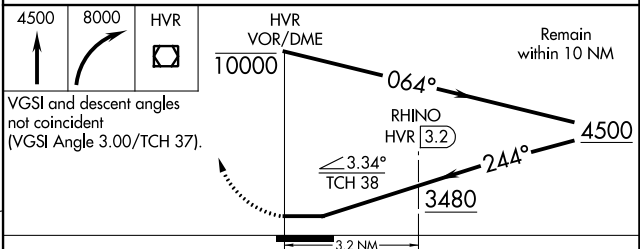
MISSED APPROACH: Climb to 4500 then climbing right turn to 8000 direct HVR VOR/DME and hold, continue climb-in-hold to 8000.

ASOS 135.225	SALT LAKE CENTER 133.4 285.4	UNICOM 122.8 (CTAF)
------------------------	--	-------------------------------

△ 3508



ELEV 2591	D	TDZE 2586
-----------	----------	-----------



REIL Rwy 8 and 26
MIRL Rwy 8-26
MIRL Rwy 3-21

CATEGORY	A	B	C	D
S-26	3480-1¼	894 (900-1¼)	3480-2¾ 894 (900-2¾)	3480-3 894 (900-3)
CIRCLING	3480-1¼	889 (900-1¼)	3480-2¾ 889 (900-2¾)	3740-3 1149 (1200-3)
RHINO FIX MINIMUMS				
S-26	3060-1	474 (500-1)	3060-1¼ 474 (500-1¼)	3060-1½ 474 (500-1½)
CIRCLING	3080-1 489 (500-1)	3120-1 529 (600-1)	3360-2¼ 769 (800-2¼)	3740-3 1149 (1200-3)

NW-1, 22 FEB 2024 to 21 MAR 2024

NW-1, 22 FEB 2024 to 21 MAR 2024

HAVRE, MONTANA

AL-5575 (FAA)

21 280

VOR/DME HVR 114.65 Chan 93(Y)	APP CRS 094°	Rwy Idg TDZE Apt Elev	5205 2585 2591
--	------------------------	-----------------------------	---

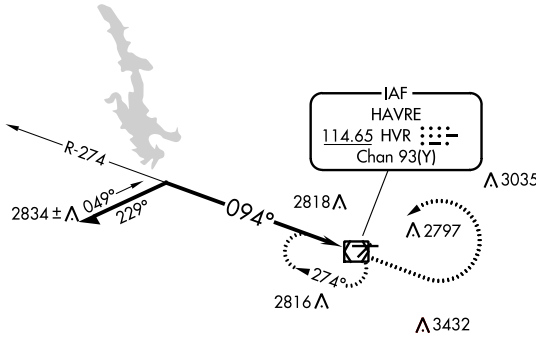
VOR RWY 8

HAVRE CITY-COUNTY (HVR)

MISSED APPROACH: Climb to 3500 then climbing left turn to 8000 direct HVR VOR/DME and hold, continue climb-in-hold to 8000.

ASOS 135.225	SALT LAKE CENTER 133.4 285.4	UNICOM 122.8 (CTAF)
------------------------	--	-------------------------------

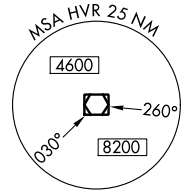
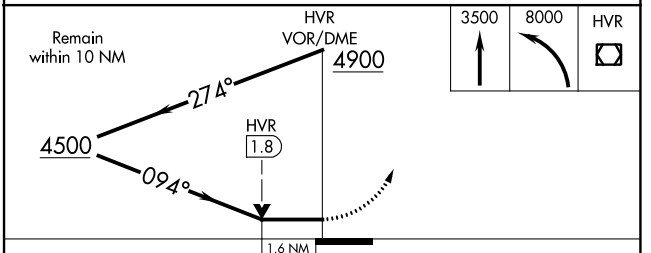
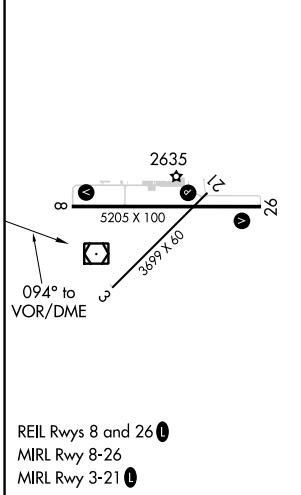
△ 3508



NW-1, 22 FEB 2024 to 21 MAR 2024

NW-1, 22 FEB 2024 to 21 MAR 2024

ELEV 2591	D	TDZE 2585
-----------	----------	-----------



CATEGORY	A	B	C	D
S-8	3140-1	555 (600-1)	3140-1 ⁵ / ₈	555 (600-1 ⁵ / ₈)
CIRCLING	3140-1	549 (600-1)	3360-2 ¹ / ₄ 769 (800-2 ¹ / ₄)	3740-3 1149 (1200-3)

HAVRE, MONTANA
Amdt 7B 07OCT21

48°33'N-109°46'W

HAVRE CITY-COUNTY (HVR)

VOR RWY 8