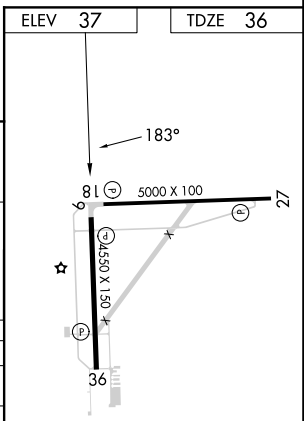
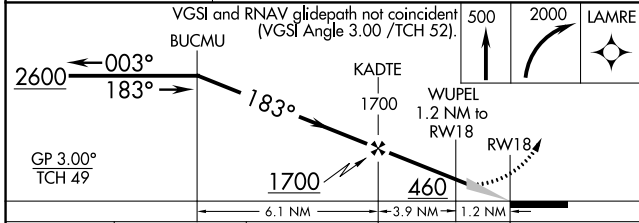
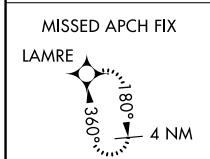
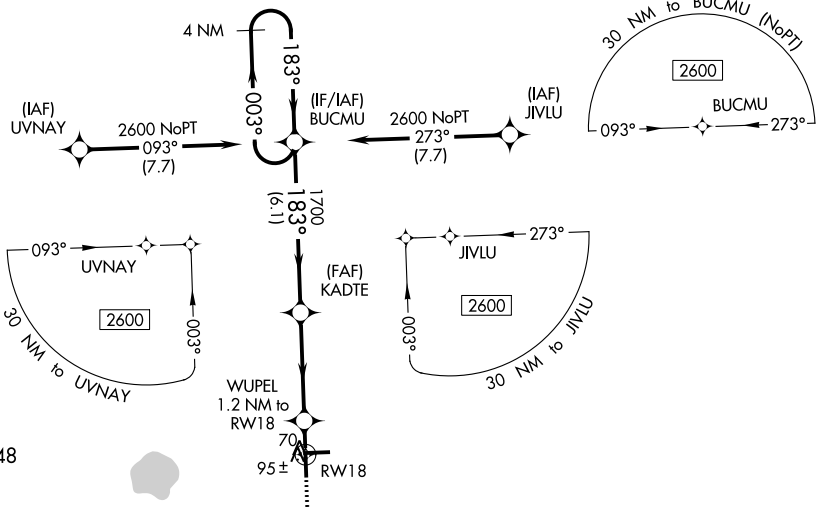


WAAS CH <b>63213</b> <b>W18A</b>	APP CRS <b>183°</b>	Rwy ldg TDZE <b>36</b> Apt Elev <b>37</b>	<b>4550</b>
--	------------------------	---	-------------

# RNAV (GPS) RWY 18

IMMOKALEE RGNL (IMIM)

RNP APCH - GPS.		MISSED APPROACH: Climb to 500 then climbing right turn to 2000 direct LAMRE and hold.
For uncompensated Baro-VNAV systems, LNAV/VNAV NA below 0°C or above 54°C.		
AWOS-3 <b>118.525</b>	FORT MYERS APP CON ★ <b>124.125 371.85</b>	CTAF <b>122.9</b>



CATEGORY	A	B	C	D
LPV DA		286-1	250 (300-1)	
LNAV/VNAV DA		286-1	250 (300-1)	
LNAV MDA		360-1	324 (400-1)	
CIRCLING	500-1 463 (500-1)	640-1 603 (700-1)	640-1 ¼ 603 (700-1¼)	680-2 643 (700-2)

REIL Rwy 9, 18, 27, and 36  
MIRL Rwy 9-27 and 18-36

SE-3, 22 FEB 2024 to 21 MAR 2024

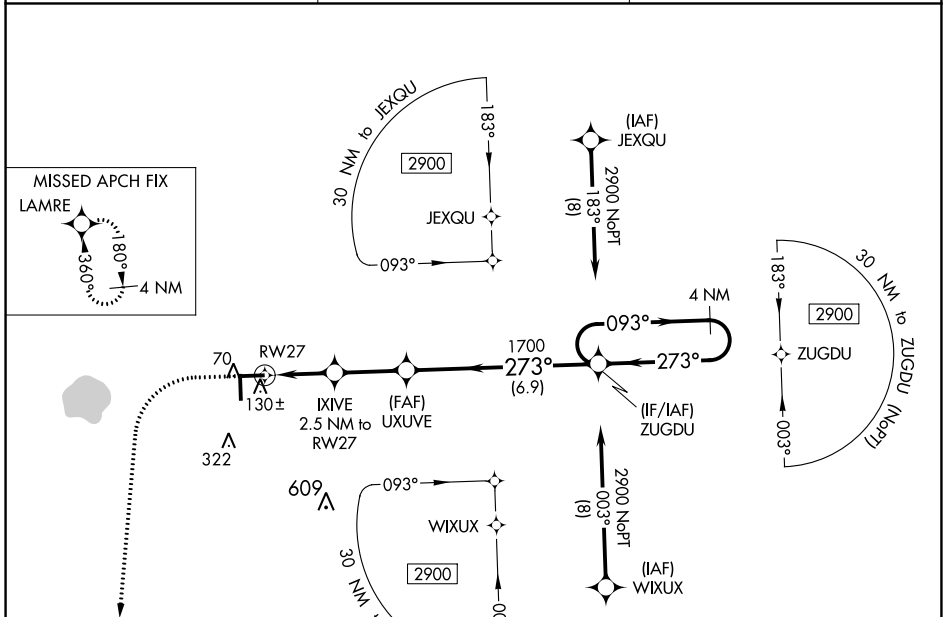
SE-3, 22 FEB 2024 to 21 MAR 2024

WAAS CH <b>69613</b> <b>W27A</b>	APP CRS <b>273°</b>	Rwy Idg TDZE Apt Elev	<b>5000</b> <b>35</b> <b>37</b>
--	------------------------	-----------------------------	---------------------------------------

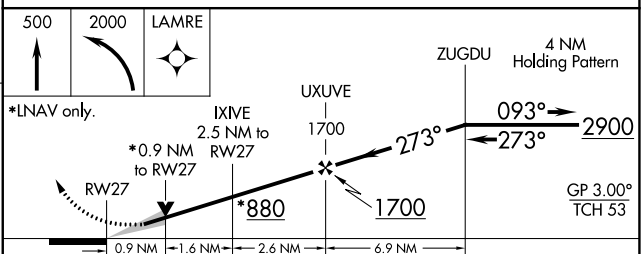
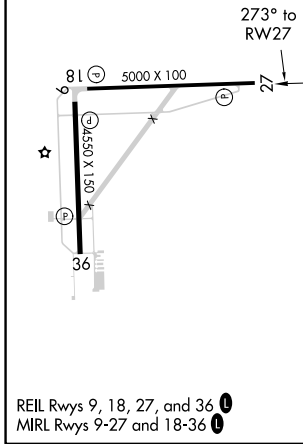
# RNAV (GPS) RWY 27

IMMOKALEE RGNL (IMM)

RNP APCH.		MISSED APPROACH: Climb to 500 then climbing left turn to 2000 direct LAMRE and hold.
For uncompensated Baro-VNAV systems, LNAV/VNAV NA below 0°C (32°F) or above 54°C (130°F).		
AWOS-3 <b>118.525</b>	FORT MYERS APP CON ★ <b>124.125 371.85</b>	CTAF <b>122.9</b>



ELEV 37	TDZE 35
---------	---------



CATEGORY	A	B	C	D
LPV DA		285-1	250 (300-1)	
LNAV/VNAV DA		311-1	276 (300-1)	
LNAV MDA		380-1	345 (400-1)	
CIRCLING	500-1 463 (500-1)	640-1 603 (700-1)	640-1 <sup>3</sup> / <sub>4</sub> 603 (700-1 <sup>3</sup> / <sub>4</sub> )	680-2 643 (700-2)

SE-3, 22 FEB 2024 to 21 MAR 2024

SE-3, 22 FEB 2024 to 21 MAR 2024

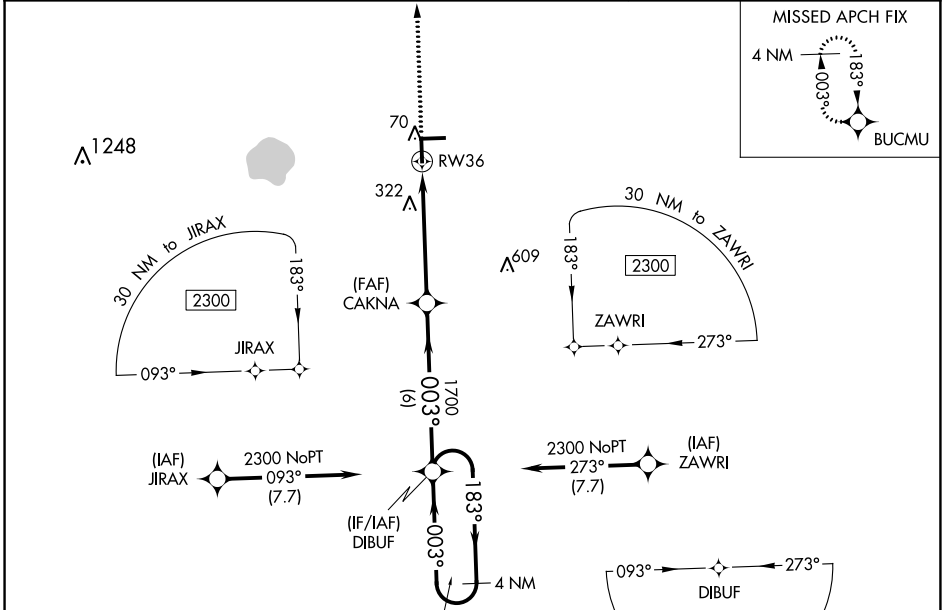
WAAS CH <b>73013</b> <b>W36A</b>	APP CRS <b>003°</b>	Rwy Idg TDZE <b>34</b> Apt Elev <b>37</b>
--	------------------------	---

# RNAV (GPS) RWY 36

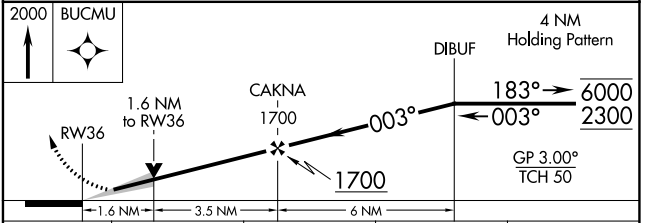
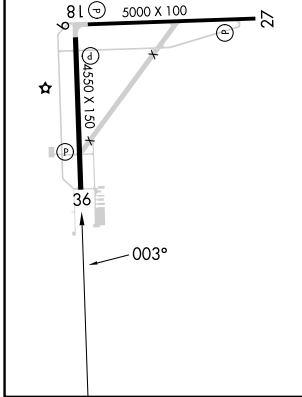
IMMOKALEE RGNL (IMIM)

RNP APCH-GPS.	MISSED APPROACH: Climb to 2000 direct BUCMU and hold.
<p><b>▽</b> For uncompensated Baro-VNAV systems, LNAV/VNAV</p> <p><b>▲</b> NA below 0°C or above 54°C.</p>	

AWOS-3 <b>118.525</b>	FORT MYERS APP CON ★ <b>124.125 371.85</b>	CTAF <b>122.9</b>
--------------------------	---	----------------------



ELEV <b>37</b>	TDZE <b>34</b>
REIL Rwy 9, 18, 27, and 36	
MIRL Rwy 9-27 and 18-36	



CATEGORY	A	B	C	D
LPV DA		284-1	250 (300-1)	
LNAV/VNAV DA		303-1	269 (300-1)	
LNAV MDA	580-1	546 (600-1)	580-1½	546 (600-1½)
CIRCLING	580-1 543 (600-1)	640-1 603 (700-1)	640-1¾ 603 (700-1¾)	680-2 643 (700-2)

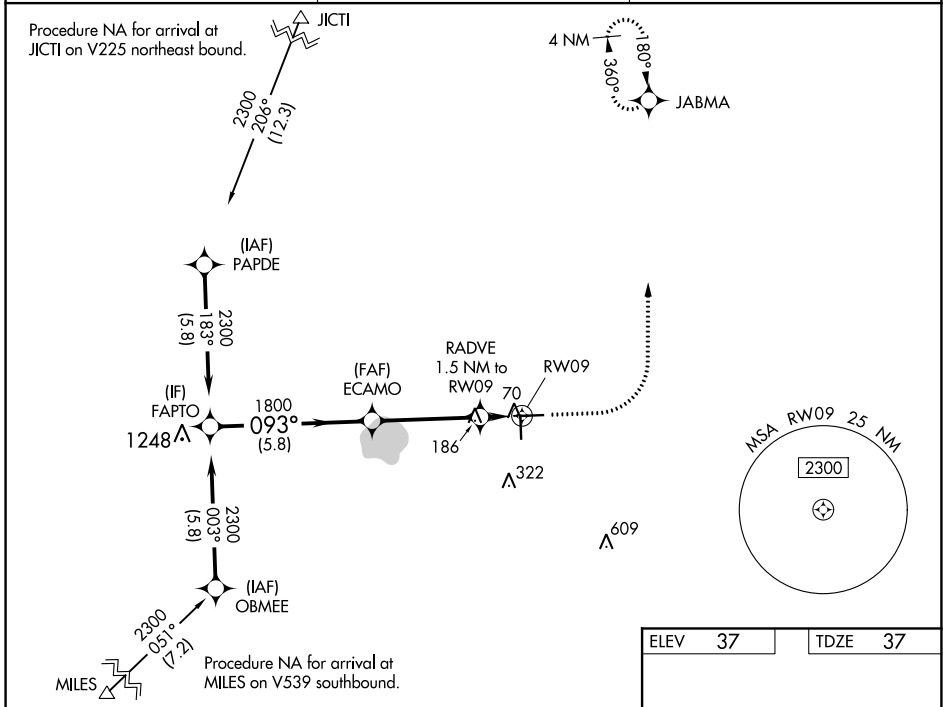
WAAS CH <b>99713</b> <b>W09A</b>	APP CRS <b>093°</b>	Rwy Idg TDZE Apt Elev	<b>5000</b> <b>37</b> <b>37</b>
--	------------------------	-----------------------------	---------------------------------------

# RNAV (GPS) RWY 9

IMMOKALEE RGNL (IMM)

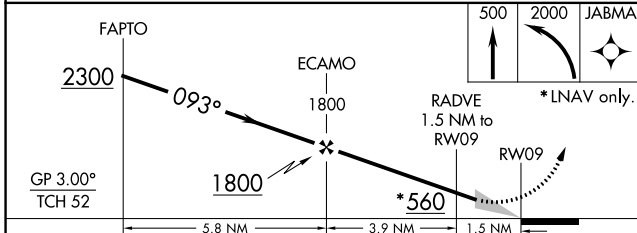
RNP APCH. ▼ For uncompensated Baro-VNAV systems, LNAV/VNAV NA below 0°C (32°F) or above 54°C (130°F).	MISSED APPROACH: Climb to 500 then climbing left turn to 2000 direct JABMA and hold.
--	--

AWOS-3 <b>118.525</b>	FORT MYERS APP CON ★ <b>124.125 371.85</b>	CTAF <b>122.9 0</b>
--------------------------	---	------------------------

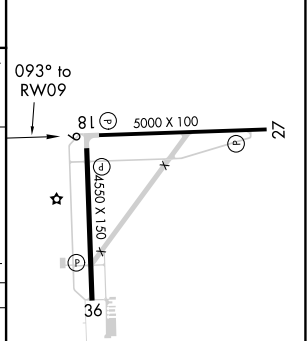


SE-3, 22 FEB 2024 to 21 MAR 2024

SE-3, 22 FEB 2024 to 21 MAR 2024



ELEV 37	TDZE 37
---------	---------



CATEGORY	A	B	C	D
LPV DA		287-1	250 (300-1)	
LNAV/VNAV DA		287-1	250 (300-1)	
LNAV MDA	440-1	403 (500-1)	440-1½	403 (500-1½)
CIRCLING	500-1 463 (500-1)	640-1 603 (700-1)	640-1¾ 603 (700-1¾)	680-2 643 (700-2)

REIL Rwy 9, 18, 27, and 36 0

MIRL Rwy 9-27 and 18-36 0