

WAAS CH <b>56429</b> <b>W14A</b>	APP CRS <b>135°</b>	Rwy Idg TDZE Apt Elev	<b>5006</b> <b>678</b> <b>678</b>
--	------------------------	-----------------------------	---

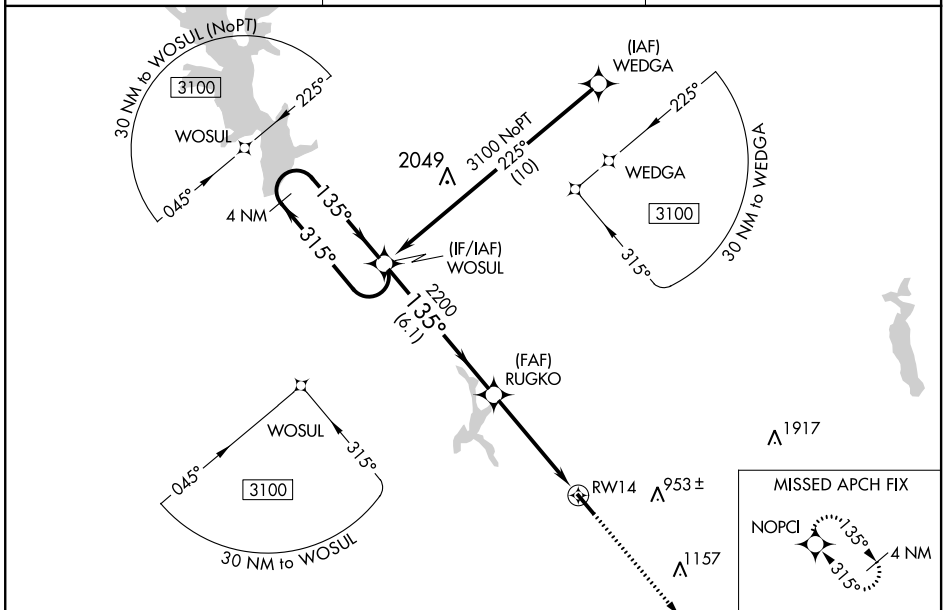
# RNAV (GPS) RWY 14

CHEROKEE COUNTY (JSO)

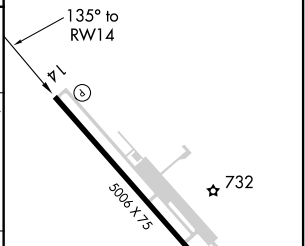
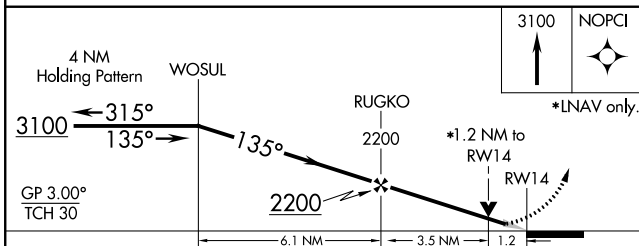
**▼** Baro-VNAV NA when using Nacogdoches altimeter setting. For uncompensated Baro-VNAV systems, LNAV/VNAV NA below -16°C (4°F) or above 54°C (130°F). When local altimeter setting not received, use Nacogdoches altimeter setting and increase DA 118 feet, increase MDA 120 feet and LPV visibility all Cats 1/8 mile, LNAV/VNAV visibility all Cats 1/4 mile, LNAV visibility Cat C 3/8 mile. DME/DME RNP-0.3 NA. VDP NA with Nacogdoches altimeter setting.

**▲** MISSED APPROACH: Climb to 3100 direct NOPCI and hold.

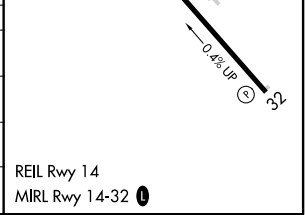
AWOS-3 <b>119.075</b>	LONGVIEW APP CON * <b>128.75 379.15</b>	UNICOM <b>122.7 (CTAF) ①</b>
--------------------------	--	---------------------------------



ELEV 678	TDZE 678
----------	----------



CATEGORY	A	B	C	D
LPV DA	928-1	250 (300-1)		NA
LNAV/VNAV DA	928-1	250 (300-1)		NA
LNAV MDA	1080-1	402 (500-1)	1080-1 1/8 402 (500-1 1/8)	NA
CIRCLING	1080-1 402 (500-1)	1140-1 462 (500-1)	1140-1 1/2 462 (500-1 1/2)	NA



SC-5, 28 JAN 2021 to 25 FEB 2021

SC-5, 28 JAN 2021 to 25 FEB 2021

WAAS CH <b>90327</b> <b>W32A</b>	APP CRS <b>315°</b>	Rwy Idg TDZE Apt Elev	<b>5006</b> <b>665</b> <b>678</b>
--	------------------------	-----------------------------	---

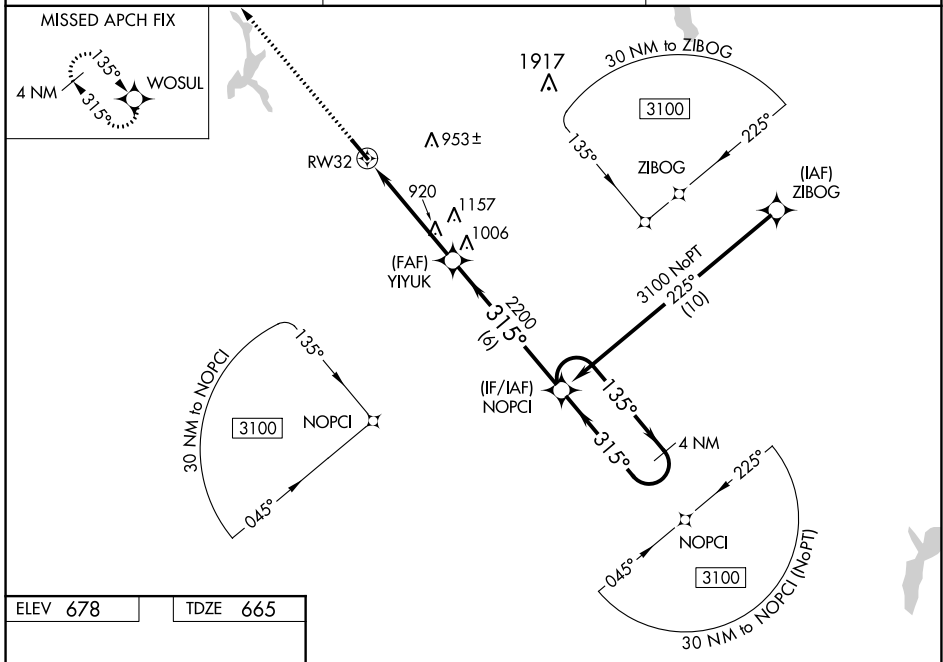
# RNAV (GPS) RWY 32

CHEROKEE COUNTY (JSO)

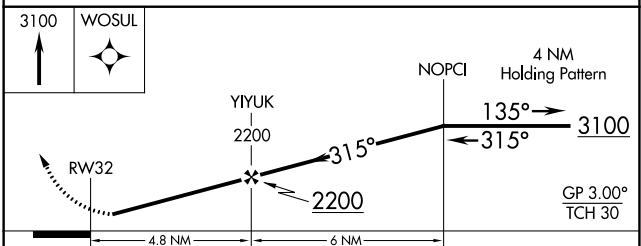
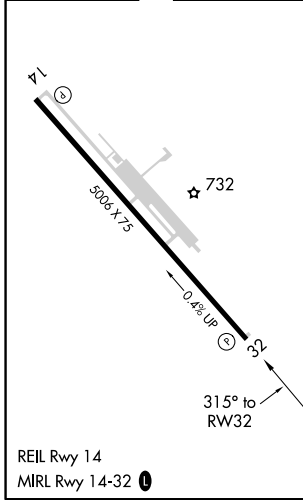
Baro-VNAV NA when using Nacogdoches altimeter setting. For uncompensated Baro-VNAV systems, LNAV/VNAV NA below -16°C (4°F) or above 54°C (130°F). When local altimeter setting not received, use Nacogdoches altimeter setting and increase DA 118 feet, increase all MDA 120 feet and LPV, LNAV/VNAV visibility all Cats ¼ mile, LNAV and Circling Cat C visibility ¾ mile. When VGSi inop, Straight-in/Circling Rwy 32 procedure NA at night. DME/DME RNP-0.3 NA. Visibility reduction by helicopters NA.

**MISSED APPROACH:** Climb to 3100 direct WOSUL and hold.

AWOS-3 <b>119.075</b>	LONGVIEW APP CON* <b>128.75 379.15</b>	UNICOM <b>122.7 (CTAF) 0</b>
--------------------------	---	---------------------------------



ELEV <b>678</b>	TDZE <b>665</b>
-----------------	-----------------



CATEGORY	A	B	C	D
LPV DA		915-1 250 (300-1)		NA
LNAV/VNAV DA		915-1 250 (300-1)		NA
LNAV MDA	1220-1	555 (600-1)	1220-1 5/8 555 (600-1 5/8)	NA
CIRCLING	1220-1	542 (600-1)	1220-1 5/8 542 (600-1 5/8)	NA

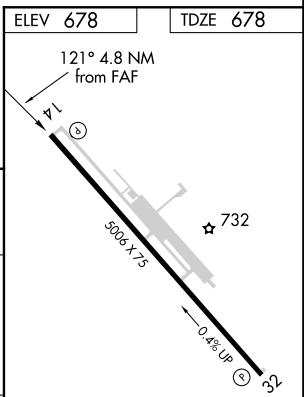
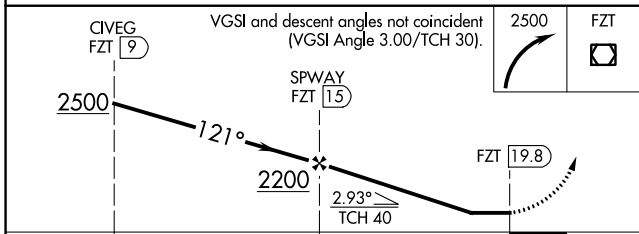
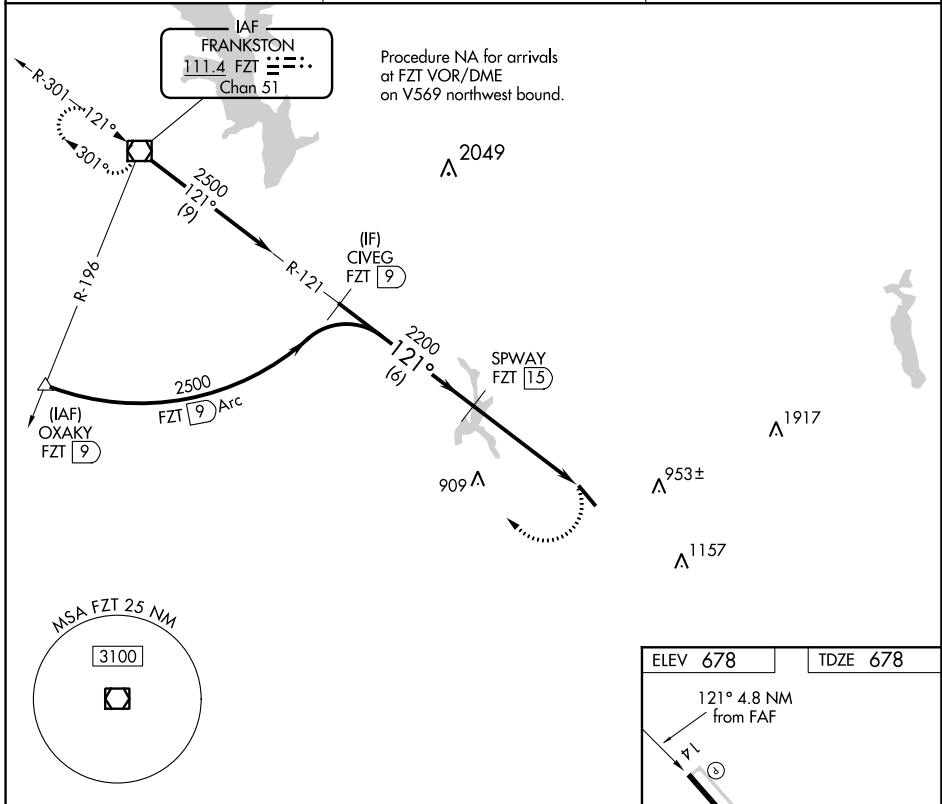
VOR/DME FZT <b>111.4</b> Chan 51	APP CRS <b>121°</b>	Rwy Idg TDZE <b>678</b> Apt Elev <b>678</b>	<b>5006</b>
--	------------------------	---	-------------

# VOR RWY 14

CHEROKEE COUNTY (JSO)

DME required.	MISSED APPROACH: Climbing right turn to 2500 direct FZT VOR/DME and hold.
---------------	---

AWOS-3 <b>119.075</b>	LONGVIEW APP CON * <b>128.75 379.15</b>	UNICOM <b>122.7 (CTAF) 0</b>
--------------------------	--	---------------------------------



CATEGORY	A	B	C	D
S-14	1080-1	402 (500-1)	1080-1½ 402 (500-1½)	NA
CIRCLING	1080-1 402 (500-1)	1140-1 462 (500-1)	1140-1½ 462 (500-1½)	NA

ELEV 678	TDZE 678
REIL Rwy 14 MIRL Rwy 14-32 0	

SC-5, 28 JAN 2021 to 25 FEB 2021

SC-5, 28 JAN 2021 to 25 FEB 2021