

LOC I-OWN 110.7 Chan 44	APP CRS 242°	Rwy Idg TDZE Apt Elev	5280 2684 2684
--------------------------------------	------------------------	-----------------------------	---

LOC RWY 24

LONESOME PINE (LNP)

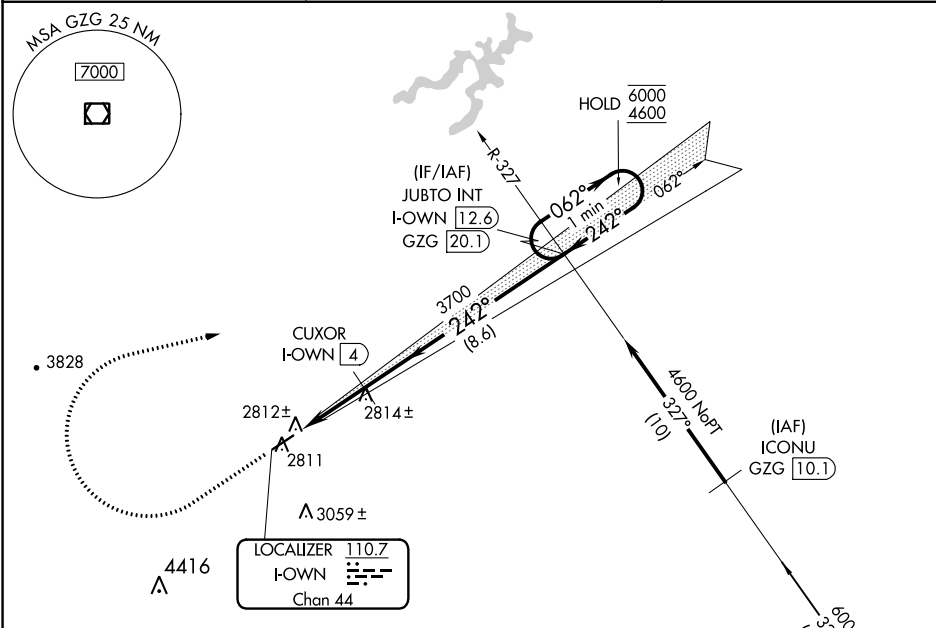
DME required. RNAV 1-GPS required.

ODALS

MISSED APPROACH: Climb to 3300 then climbing right turn to 4600 direct JUBTO and hold.

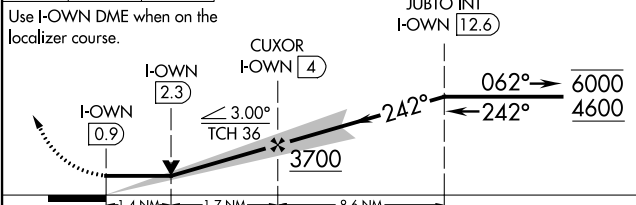
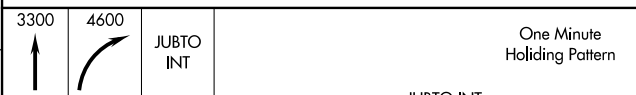
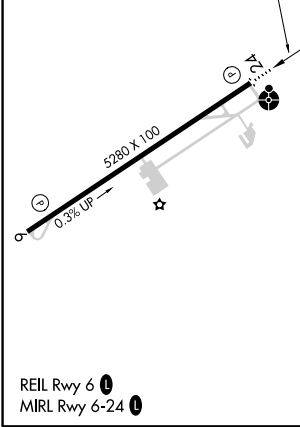
⚠ Circling to Rwy 6 NA at night. Rwy 24 helicopter visibility reduction below 3/4 SM NA.

AWOS-3 118.6	INDIANAPOLIS CENTER 126.575 253.5	UNICOM 123.0 (CTAF) 1
------------------------	---	--



ELEV 2684	TDZE 2684
-----------	-----------

242° 3.1 NM from FAF



CATEGORY	A	B	C	D
S-LOC 24	3160-1	476 (500-1)	3160-1¼	476 (500-1¼)
C CIRCLING	3240-1 556 (600-1)	3360-1 676 (700-1)	3360-2 676 (700-2)	3560-2¾ 876 (900-2¾)

NE-3, 19 MAY 2022 to 16 JUN 2022

NE-3, 19 MAY 2022 to 16 JUN 2022

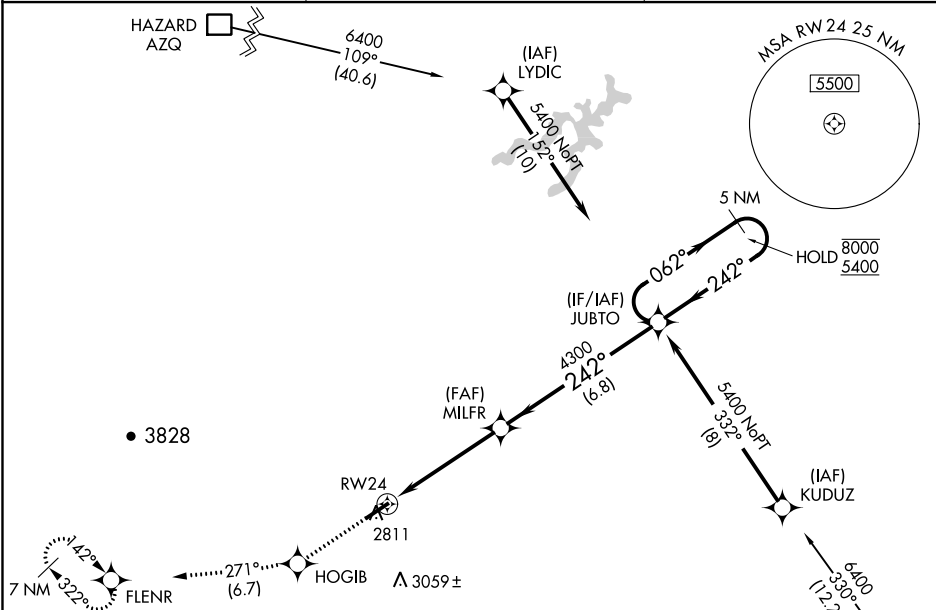
WAAS CH 77602 W24A	APP CRS 242°	Rwy ldg TDZE Apt Elev 2684 2684
--	------------------------	---

RNAV (GPS) RWY 24

LONESOME PINE (LNP)

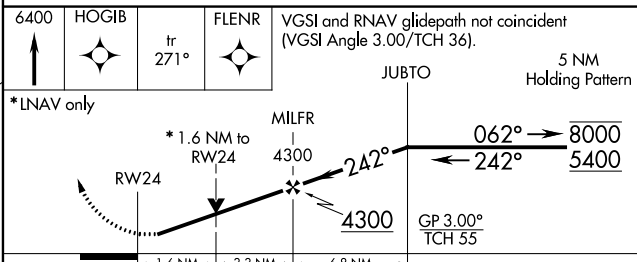
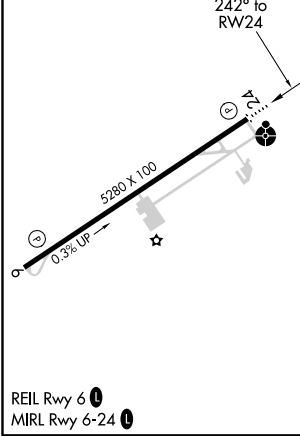
RNP APCH.	ODALS	MISSED APPROACH: Climb to 6400 direct HOGIB and on track 271° to FLENR and hold, continue climb-in-hold to 6400.
<p>▼ Circling to Rwy 6 NA at night. Rwy 24 helicopter visibility reduction below 3/4 SM NA.</p> <p>▲ For uncompensated Baro-VNAV systems, LNAV/VNAV NA below -20°C or above 54°C. Inop table does not apply to LPV all Cats and LNAV Cats A/B. For inop ALS, increase LNAV/VNAV Cat A/B visibility to 1 1/4 SM and LNAV Cat C/D visibility to 1 3/8 SM.</p>		

AWOS-3 118.6	INDIANAPOLIS CENTER 126.575 253.5	UNICOM 123.0 (CTAF)
------------------------	---	-------------------------------



ELEV 2684	TDZE 2684
------------------	------------------

Procedure NA for arrival on GZG VOR/DME airway radials 248 CW 010.



CATEGORY	A	B	C	D
LPV DA		2962-1	278 (300-1)	
LNAV/VNAV DA		3112-1 1/8	428 (500-1 1/8)	
LNAV MDA	3140-1	456 (500-1)	3140-1 1/8	456 (500-1 1/8)
CIRCLING	3240-1 556 (600-1)	3360-1 676 (700-1)	3360-2 676 (700-2)	3560-2 3/4 876 (900-2 3/4)

NE-3, 19 MAY 2022 to 16 JUN 2022

NE-3, 19 MAY 2022 to 16 JUN 2022

APP CRS 066°	Rwy Idg TDZE Apt Elev	5280 2671 2684
------------------------	-----------------------------	---

RNAV (GPS) RWY 6

LONESOME PINE (LNP)

RNP APCH.

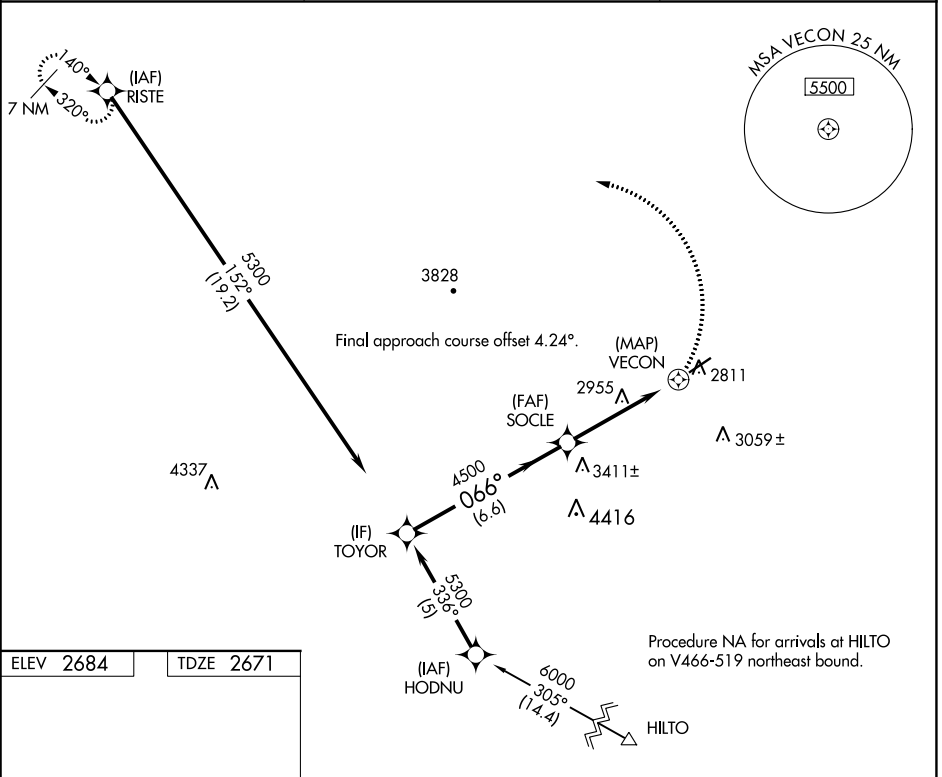
- ▼ Procedure NA at night.
- ▲ Rwy 6 helicopter visibility reduction below 1 SM NA.

MISSED APPROACH: Climbing left turn to 6400 direct RISTE and hold.

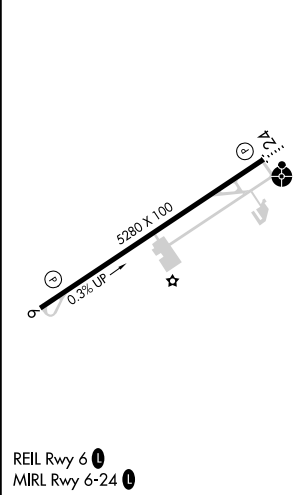
AWOS-3
118.6

INDIANAPOLIS CENTER
126.575 253.5

UNICOM
123.0 (CTAF) **0**

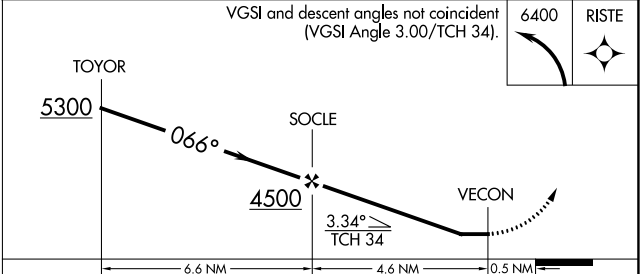


ELEV 2684	TDZE 2671
-----------	-----------



VGSI and descent angles not coincident (VGSI Angle 3.00/TCH 34).

6400	RISTE
------	-------



CATEGORY	A	B	C	D
LNAV MDA	3260-1	589 (600-1)	3260-1¾	589 (600-1¾)
C CIRCLING	3260-1 576 (600-1)	3360-1 676 (700-1)	3360-2 676 (700-2)	3560-2¾ 876 (900-2¾)