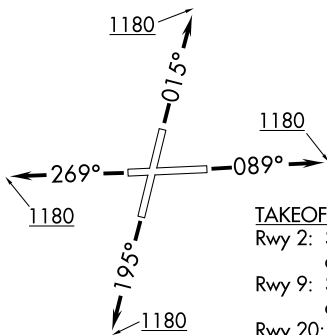


ADELL SIX DEPARTURE (RNAV)

D-ATIS
126.675
GND CON
120.425
LEWIS TOWER ★
134.8 (CTAF)
CHICAGO DEP CON
119.35 354.075

**TOP ALTITUDE:
3000**



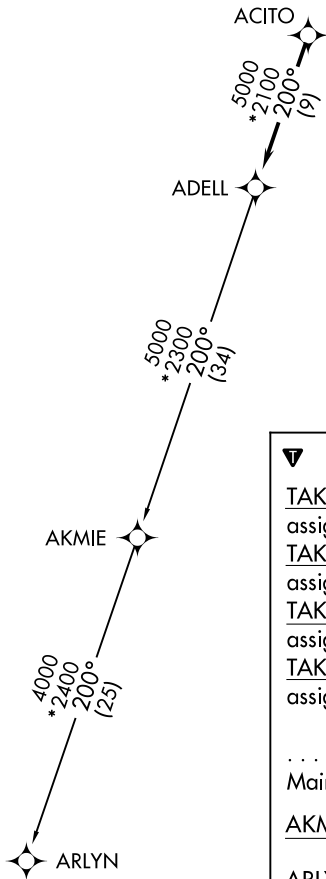
TAKEOFF MINIMUMS:

- Rwy 2: Standard with minimum climb of 420' per NM to 2700.
- Rwy 9: Standard with minimum climb of 310' per NM to 2700.
- Rwy 20: Standard with minimum climb of 370' per NM to 2700.
- Rwy 27: Standard with minimum climb of 340' per NM to 2700.

- NOTE: RADAR required.
- NOTE: DME/DME/IRU or GPS required.
- NOTE: RNAV 1.
- NOTE: Turbojet departures maintain 250K until advised by ATC.
- NOTE: AKMIE Transition: For aircraft inbound to BMI, SPI, PIA, or as assigned by ATC.

EC-3, 22 FEB 2024 to 21 MAR 2024

EC-3, 22 FEB 2024 to 21 MAR 2024



NOTE: Chart not to scale.



DEPARTURE ROUTE DESCRIPTION

- TAKEOFF RUNWAY 2: Climb heading 015° to 1180, then as assigned by ATC, for vectors to ACITO. Thence. . .
- TAKEOFF RUNWAY 9: Climb heading 089° to 1180, then as assigned by ATC, for vectors to ACITO. Thence. . .
- TAKEOFF RUNWAY 20: Climb heading 195° to 1180, then as assigned by ATC, for vectors to ACITO. Thence. . .
- TAKEOFF RUNWAY 27: Climb heading 269° to 1180, then as assigned by ATC, for vectors to ACITO. Thence. . .

. . . . on track 200° to ADELL, then on (transition).
Maintain 3000. Expect filed altitude 10 minutes after departure.

AKMIE TRANSITION (ADELL6.AKMIE):

ARLYN TRANSITION (ADELL6.ARLYN):

(BLOKR6.BLOKR) 22363

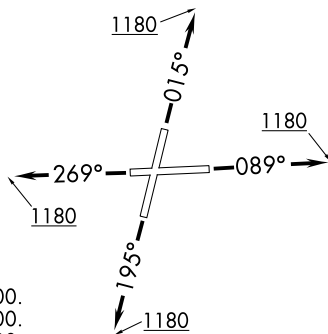
AL-6063 (FAA)

BLOKR SIX DEPARTURE (RNAV)

LEWIS UNIVERSITY (L.O.T)
CHICAGO/ROMEOVILLE, ILLINOIS

D-ATIS
126.675
GND CON
120.425
LEWIS TOWER ★
134.8 (CTAF)
CHICAGO DEP CON
119.35 354.075

**TOP ALTITUDE:
3000**



TAKEOFF MINIMUMS:

- Rwy 2: Standard with minimum climb of 420' per NM to 2700.
- Rwy 9: Standard with minimum climb of 310' per NM to 2700.
- Rwy 20: Standard with minimum climb of 370' per NM to 2700.
- Rwy 27: Standard with minimum climb of 340' per NM to 2700.

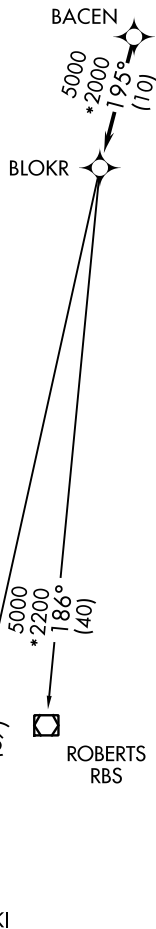
NOTE: RADAR required.

NOTE: DME/DME/IRU or GPS required.

NOTE: RNAV 1.

NOTE: Turbojet departures maintain 250K until advised by ATC.

NOTE: ROBERTS TRANSITION: For aircraft inbound to CML or STL, or as assigned by ATC.



DEPARTURE ROUTE DESCRIPTION

TAKEOFF RUNWAY 2: Climb heading 015° to 1180, then as assigned by ATC, for vectors to BACEN. . . .

TAKEOFF RUNWAY 9: Climb heading 089° to 1180, then as assigned by ATC, for vectors to BACEN. Thence. . . .

TAKEOFF RUNWAY 20: Climb heading 195° to 1180, then as assigned by ATC, for vectors to BACEN. Thence. . . .

TAKEOFF RUNWAY 27: Climb heading 269° to 1180, then as assigned by ATC, for vectors to BACEN. Thence. . . .

. . . .on track 195° to BLOKR, then on (transition).
Maintain 3000. Expect filed altitude 10 minutes after departure.

BEKKI TRANSITION (BLOKR6.BEKKI):
ROBERTS TRANSITION (BLOKR6.RBS):

NOTE: Chart not to scale.

EC-3, 22 FEB 2024 to 21 MAR 2024

EC-3, 22 FEB 2024 to 21 MAR 2024

BLOKR SIX DEPARTURE (RNAV)
(BLOKR6.BLOKR) 10OCT19

CHICAGO/ROMEOVILLE, ILLINOIS
LEWIS UNIVERSITY (L.O.T)

(CARYN6.CARYN) 22363

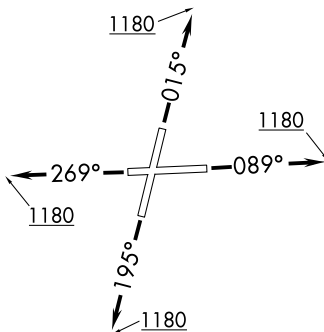
AL-6063 (FAA)

LEWIS UNIVERSITY (L.O.T)
CHICAGO/ROMEOVILLE, ILLINOIS

CARYN SIX DEPARTURE (RNAV)

D-ATIS
126.675
GND CON
120.425
LEWIS TOWER *
134.8 (CTAF)
CHICAGO DEP CON
119.35 354.075

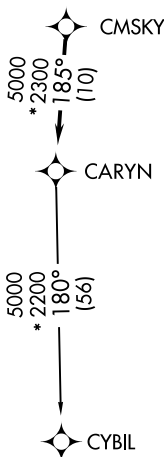
**TOP ALTITUDE:
3000**



- NOTE: RADAR required.
- NOTE: DME/DME/IRU or GPS required.
- NOTE: RNAV 1.
- NOTE: Turbojet departures maintain 250K until advised by ATC.

TAKEOFF MINIMUMS:

- Rwy 2: Standard with minimum climb of 420' per NM to 2700.
- Rwy 9: Standard with minimum ATC climb of 260' per NM to 2700.
- Rwys 20, 27: Standard.



NOTE: Chart not to scale.

DEPARTURE ROUTE DESCRIPTION

TAKEOFF RUNWAY 2: Climb heading 015° to 1180, then as assigned by ATC, for vectors to CMSKY. Thence....

TAKEOFF RUNWAY 9: Climb heading 089° to 1180, then as assigned by ATC, for vectors to CMSKY. Thence....

TAKEOFF RUNWAY 20: Climb heading 195° to 1180, then as assigned by ATC, for vectors to CMSKY. Thence....

TAKEOFF RUNWAY 27: Climb heading 269° to 1180, then as assigned by ATC, for vectors to CMSKY. Thence....

....on track 185° to CARYN, then on (transition). Maintain 3000. Expect filed altitude 10 minutes after departure.

CYBIL TRANSITION (CARYN6.CYBIL):

CARYN SIX DEPARTURE (RNAV)

(CARYN6.CARYN) 10OCT19

CHICAGO/ROMEOVILLE, ILLINOIS
LEWIS UNIVERSITY (L.O.T)

EC-3, 22 FEB 2024 to 21 MAR 2024

EC-3, 22 FEB 2024 to 21 MAR 2024

(DARCY6.DARCY) 22363

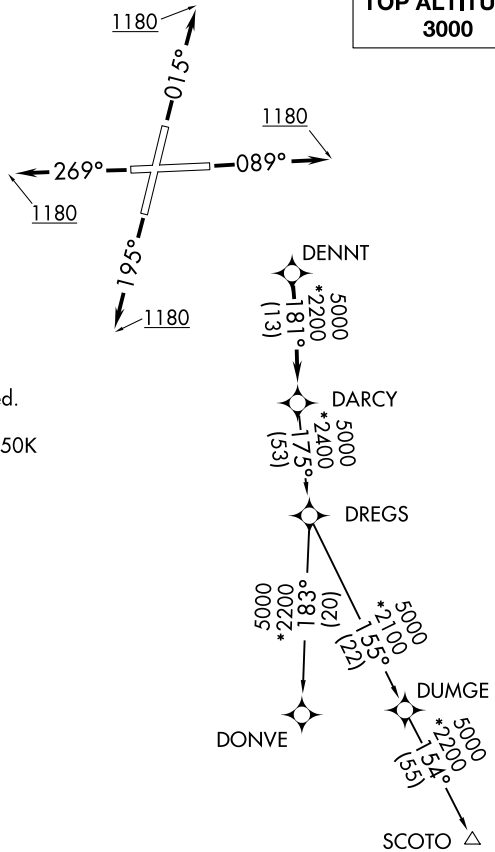
AL-6063 (FAA)

LEWIS UNIVERSITY (LOT)
CHICAGO/ROMEOVILLE, ILLINOIS

DARCY SIX DEPARTURE (RNAV)

D-ATIS
126.675
GND CON
120.425
LEWIS TOWER ★
134.8 (CTAF)
CHICAGO DEP CON
119.35 354.075

**TOP ALTITUDE:
3000**



TAKEOFF MINIMUMS:

Rwys 9, 20, 27: Standard.
Rwy 2: Standard with minimum climb
of 420' per NM to 1200.

- NOTE: RADAR required.
- NOTE: DME/DME/IRU or GPS required.
- NOTE: RNAV 1.
- NOTE: Turbojet departures maintain 250K
until advised by ATC.

NOTE: Chart not to scale.

DEPARTURE ROUTE DESCRIPTION

- TAKEOFF RUNWAY 2:** Climb heading 015° to 1180, then as assigned by ATC, for vectors to DENNT. Thence. . . .
- TAKEOFF RUNWAY 9:** Climb heading 089° to 1180, then as assigned by ATC, for vectors to DENNT. Thence. . . .
- TAKEOFF RUNWAY 20:** Climb heading 195° to 1180, then as assigned by ATC, for vectors to DENNT. Thence. . . .
- TAKEOFF RUNWAY 27:** Climb heading 269° to 1180, then as assigned by ATC, for vectors to DENNT. Thence. . . .

. . . . on track 181° to DARC, then on (transition). Maintain 3000.
Expect filed altitude 10 minutes after departure.

- DONVE TRANSITION (DARCY6.DONVE):
- SCOTO TRANSITION (DARCY6.SCOTO):

DARCY SIX DEPARTURE (RNAV)
(DARCY6.DARCY) 10OCT19

CHICAGO/ROMEOVILLE, ILLINOIS
LEWIS UNIVERSITY (LOT)

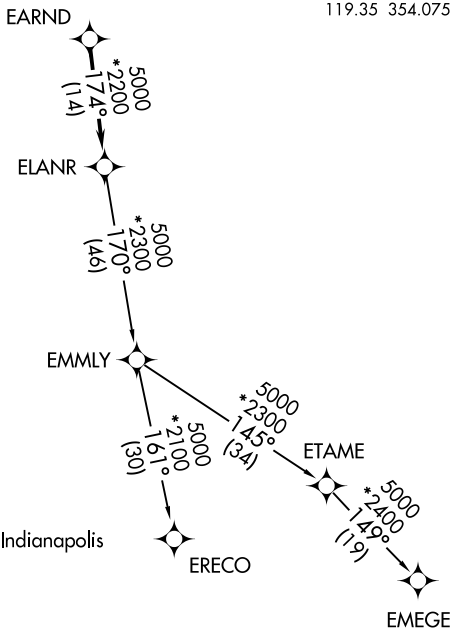
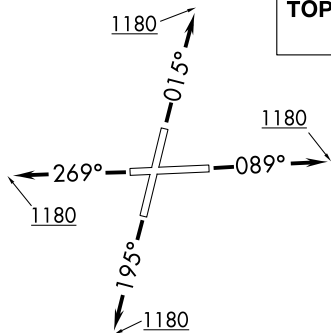
EC-3, 22 FEB 2024 to 21 MAR 2024

EC-3, 22 FEB 2024 to 21 MAR 2024

ELANR SIX DEPARTURE (RNAV)

**TOP ALTITUDE:
3000**

D-ATIS
126.675
GND CON
120.425
LEWIS TOWER ★
134.8 (CTAF)
CHICAGO DEP CON
119.35 354.075



- NOTE: RADAR required.
- NOTE: DME/DME/IRU or GPS required.
- NOTE: RNAV 1.
- NOTE: Turbojet departures maintain 250K until advised by ATC.
- NOTE: EMMLY Transition: For aircraft inbound to Indianapolis Terminal Area, or as assigned by ATC.

TAKEOFF MINIMUMS:

- Rwys 9, 20, 27: Standard.
- Rwy 2: Standard with minimum climb of 420' per NM to 1200.

NOTE: Chart not to scale.

DEPARTURE ROUTE DESCRIPTION

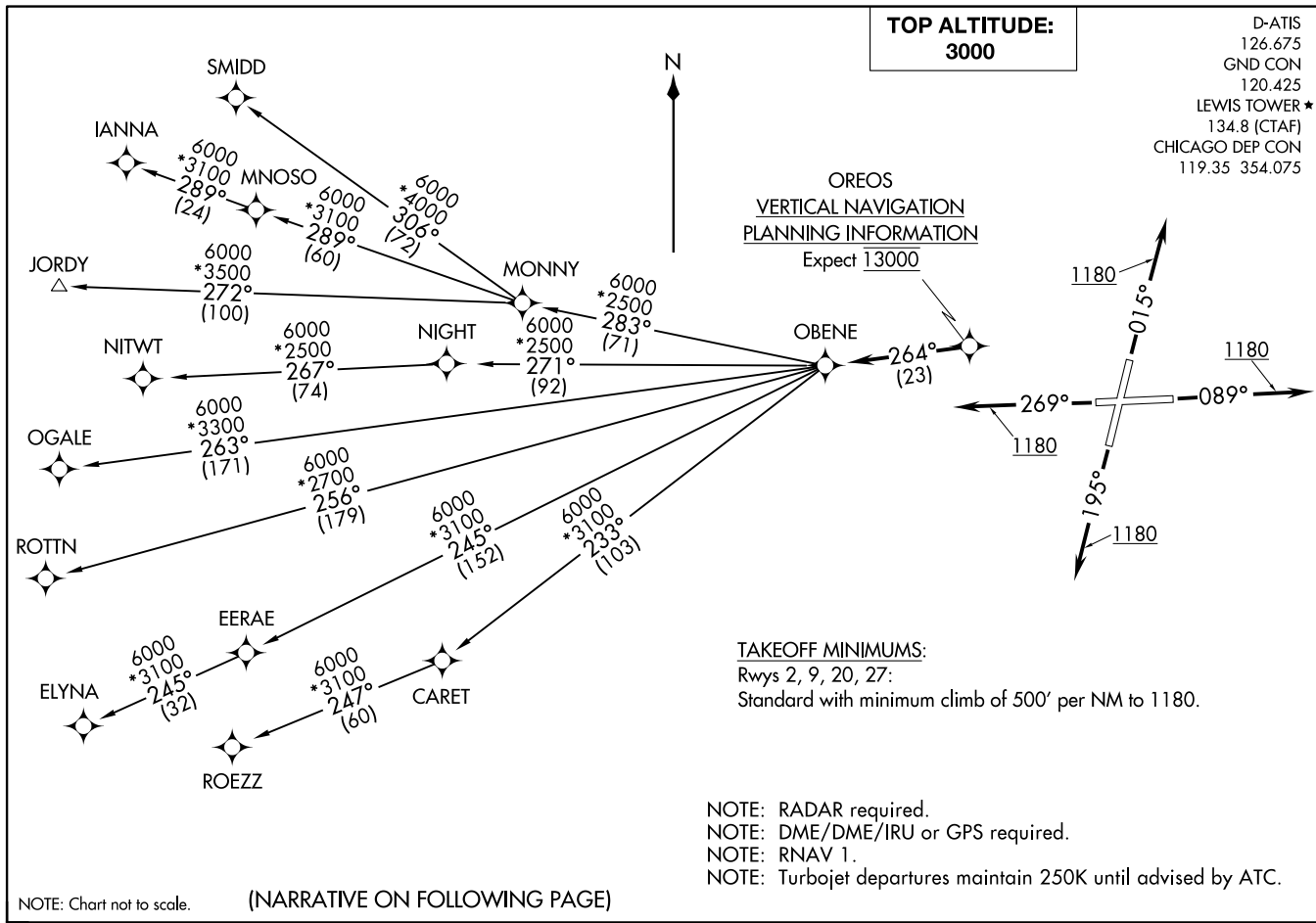
- TAKEOFF RUNWAY 2:** Climb heading 015° to 1180, then as assigned by ATC, for vectors to EARND. Thence. . . .
- TAKEOFF RUNWAY 9:** Climb heading 089° to 1180, then as assigned by ATC, for vectors to EARND. Thence. . . .
- TAKEOFF RUNWAY 20:** Climb heading 195° to 1180, then as assigned by ATC, for vectors to EARND. Thence. . . .
- TAKEOFF RUNWAY 27:** Climb heading 269° to 1180, then as assigned by ATC, for vectors to EARND. Thence. . . .

. . . .on track 174° to ELANR, then on (transition). Maintain 3000. Expect filed altitude 10 minutes after departure.

- EMEGE TRANSITION (ELANR6.EMEGE):**
- EMMLY TRANSITION (ELANR6.EMMLY):**
- ERECO TRANSITION (ELANR6.ERECO):**

OBENE THREE DEPARTURE (RNAV)
(OBENE3.OBENE) 08NOV18

CHICAGO/ROMEOVILLE, ILLINOIS
LEWIS UNIVERSITY (LOT)



D-ATIS
126.675
GND CON
120.425
LEWIS TOWER ★
134.8 (CTAF)
CHICAGO DEP CON
119.35 354.075

(OBENE3.OBENE) 22333
OBENE THREE DEPARTURE (RNAV)
AL-6063 (FAA)

LEWIS UNIVERSITY (LOT)
CHICAGO/ROMEOVILLE, ILLINOIS

(NARRATIVE ON FOLLOWING PAGE)



DEPARTURE ROUTE DESCRIPTION

TAKEOFF RUNWAY 2: Climb heading 015° to 1180, then continue climb on 015° heading or as assigned by ATC, for vectors to OREOS. Thence

TAKEOFF RUNWAY 9: Climb heading 089° to 1180, then continue climb on 089° heading or as assigned by ATC, for vectors to OREOS. Thence

TAKEOFF RUNWAY 20: Climb heading 195° to 1180, then continue climb on 195° heading or as assigned by ATC, for vectors to OREOS. Thence

TAKEOFF RUNWAY 27: Climb heading 269° to 1180, then continue climb on 269° heading or as assigned by ATC, for vectors to OREOS. Thence

. . . . on depicted route to OBENE, maintain 3000. Expect filed altitude 10 minutes after departure.

ELYNA TRANSITION (OBENE3.ELYNA)

IANNA TRANSITION (OBENE3.IANNA)

JORDY TRANSITION (OBENE3.JORDY)

MNOSO TRANSITION (OBENE3.MNOSO): For Minneapolis terminal area arrivals or assigned by ATC.

NITWT TRANSITION (OBENE3.NITWT)

OGALE TRANSITION (OBENE3.OGALE)

ROTTN TRANSITION (OBENE3.ROTTN)

ROEZZ TRANSITION (OBENE3.ROEZZ)

SMIDD TRANSITION (OBENE3.SMIDD)

EC-3, 22 FEB 2024 to 21 MAR 2024

EC-3, 22 FEB 2024 to 21 MAR 2024