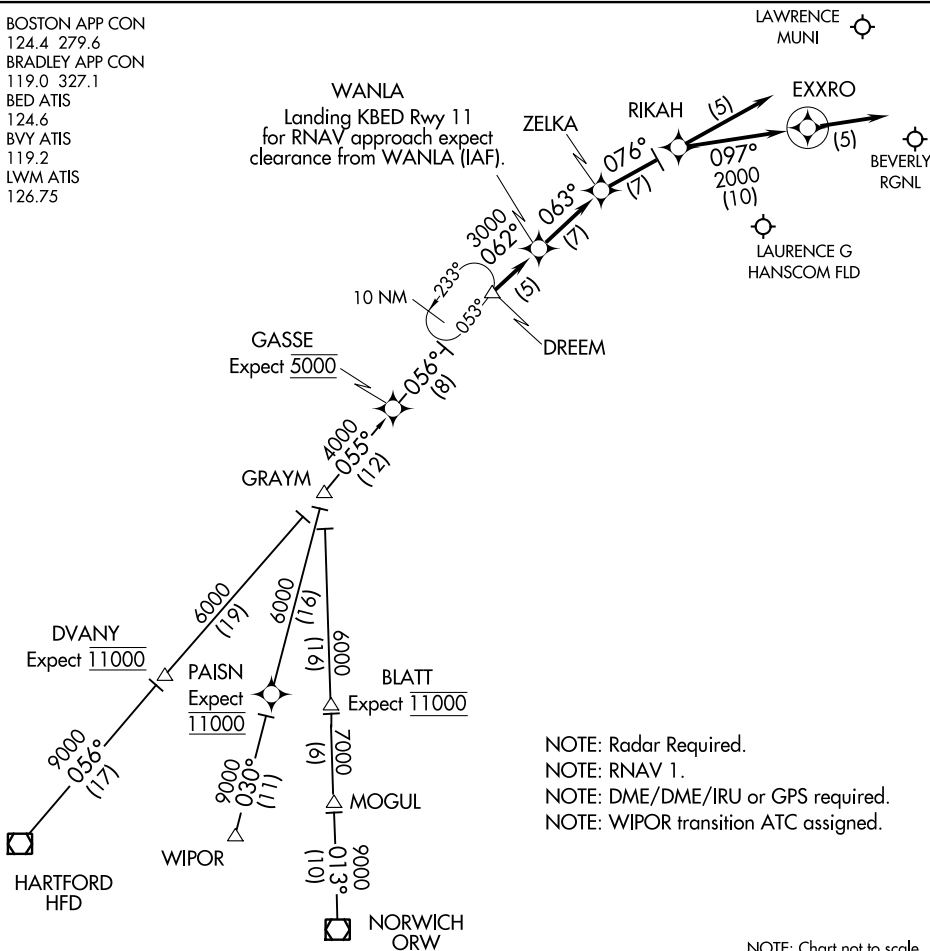


DREEM TWO ARRIVAL (RNAV)

BEDFORD, MASSACHUSETTS

BOSTON APP CON
124.4 279.6
BRADLEY APP CON
119.0 327.1
BED ATIS
124.6
BVY ATIS
119.2
LWM ATIS
126.75

WANLA
Landing KBED Rwy 11
for RNAV approach expect
clearance from WANLA (IAF).



NOTE: Radar Required.
NOTE: RNAV 1.
NOTE: DME/DME/IRU or GPS required.
NOTE: WIPOR transition ATC assigned.

NOTE: Chart not to scale.

HARTFORD TRANSITION (HFD.DREEM2):
NORWICH TRANSITION (ORW.DREEM2):
WIPOR TRANSITION (WIPOR.DREEM2):

LANDING BVY ALL RWYS, BED RWY 23 & 29: From DREEM on track 062° to WANLA , then on track 063° to ZELKA, then on track 076° to RIKAH, then on track 097° to EXXRO, then on track 097°. Expect radar vectors to destination airport and final approach course.
LANDING BED RWY 11: From DREEM on track 062° to WANLA, then on track 063° to ZELKA. Expect ILS approach.
LANDING LWM ALL RWYS: From DREEM on track 062° to WANLA, then on track 063° to ZELKA, then on track 076° to RIKAH, then on track 076°, expect radar vectors to final approach course.

DREEM TWO ARRIVAL (RNAV)

BEDFORD, MASSACHUSETTS

NE-1, 22 FEB 2024 to 21 MAR 2024

NE-1, 22 FEB 2024 to 21 MAR 2024

GRAYM SIX ARRIVAL

AL-626 (FAA)

BEDFORD, MASSACHUSETTS

BOSTON APP CON
124.4 279.6
BRADLEY APP CON
119.0 327.1
BED ATIS
124.6
BVY ATIS
119.2
LWM ATIS
126.75

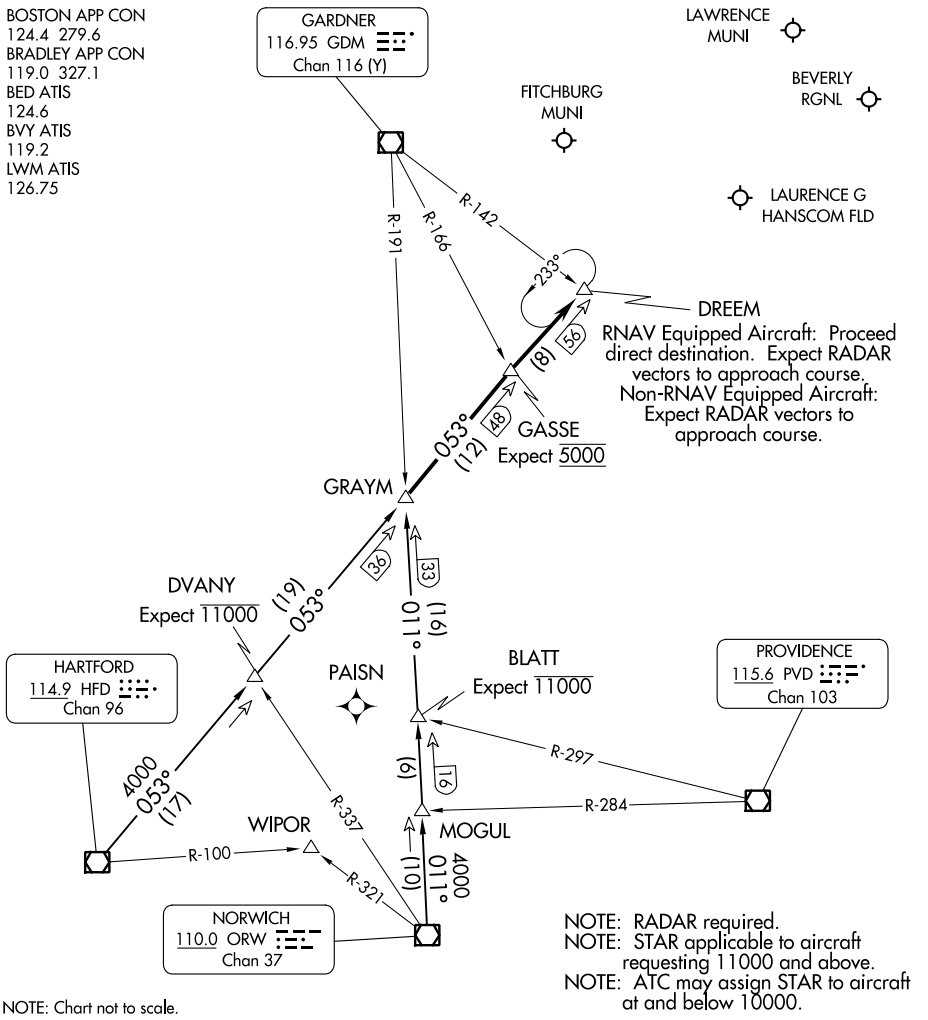
GARDNER
116.95 GDM
Chan 116 (Y)

LAWRENCE MUNI

FITCHBURG MUNI

BEVERLY RGNL

LAURENCE G HANSCOM FLD



NE-1, 22 FEB 2024 to 21 MAR 2024

NE-1, 22 FEB 2024 to 21 MAR 2024

NOTE: Chart not to scale.

ARRIVAL ROUTE DESCRIPTION

HARTFORD TRANSITION (HFD.GRAYM6): From over HFD VOR/DME on HFD R-053 to GRAYM. Thence. . .

NORWICH TRANSITION (ORW.GRAYM6): From over ORW VOR/DME on ORW R-011 to GRAYM. Thence. . .

. . . . From over GRAYM on HFD R-053 to GASSE, then to DREEM, at DREEM:

RNAV EQUIPPED AIRCRAFT: Proceed direct destination expect radar vectors to approach course.

NON-RNAV EQUIPPED AIRCRAFT: Expect radar vectors to approach course.

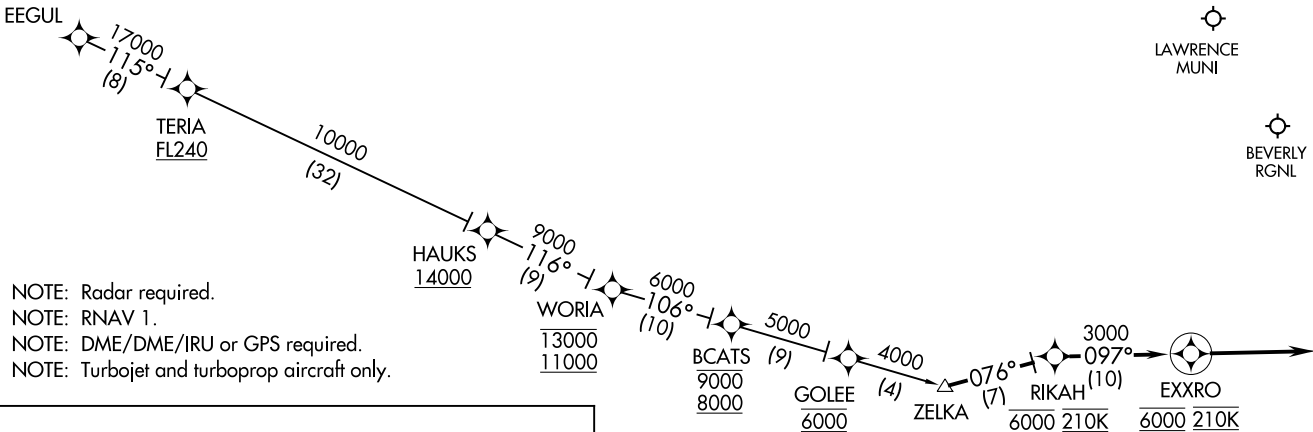
GRAYM SIX ARRIVAL

BEDFORD, MASSACHUSETTS

ZELKA ZELKA2 07DEC17

ZELKA TWO ARRIVAL (RNAV)

BEDFORD, MASSACHUSETTS

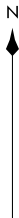


- NOTE: Radar required.
- NOTE: RNAV 1.
- NOTE: DME/DME/IRU or GPS required.
- NOTE: Turbojet and turboprop aircraft only.

ARRIVAL ROUTE DESCRIPTION

EEGUL TRANSITION (EEGUL.ZELKA2):

From ZELKA on track 076° to cross RIKAH at 6000 and 210K, then on track 097° to cross EXXRO at 6000 and at 210K, then on track 097°. Expect radar vectors to destination airport and final approach course.



NOTE: Chart not to scale.

ZELKA TWO ARRIVAL (RNAV)

BEDFORD, MASSACHUSETTS

(ZELKA.ZELKA2) 21112

AL-626 (FAA)