

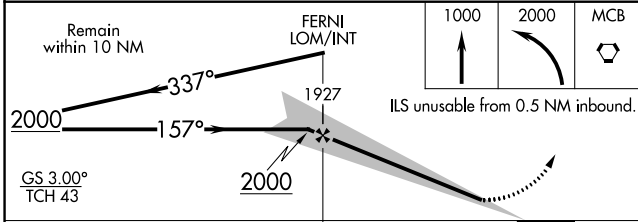
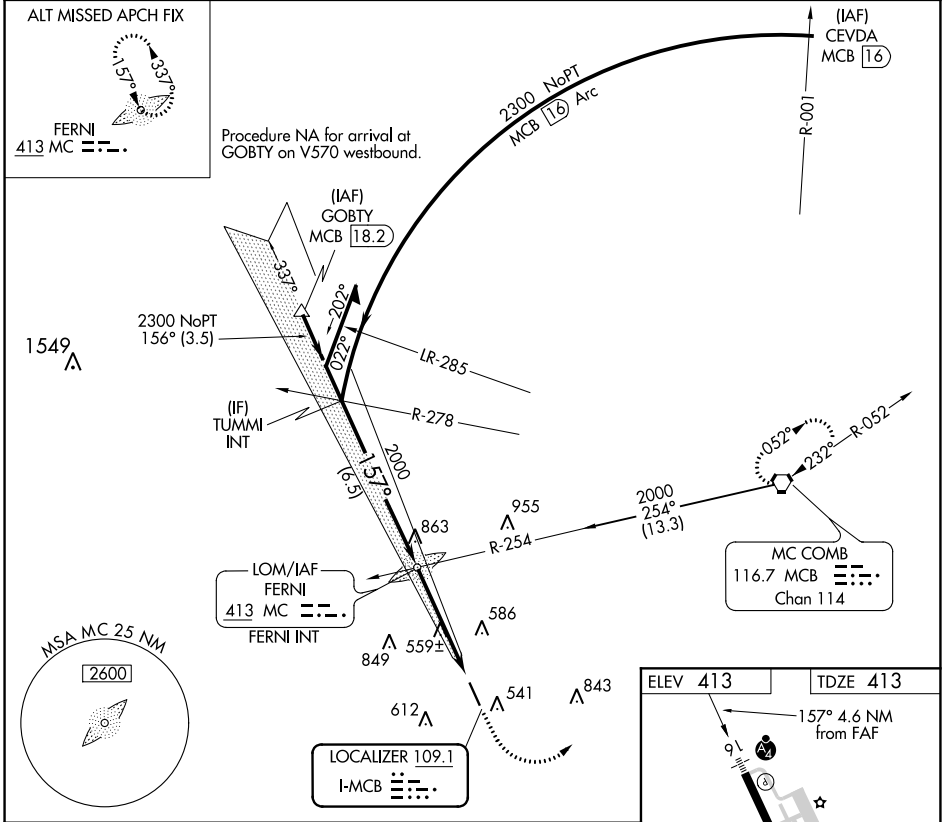
LOC I-MCB 109.1	APP CRS 157°	Rwy Idg 5000
		TDZE 413
		Apt Elev 413

ILS or LOC RWY 16

MC COMB/PIKE COUNTY/JOHN E LEWIS FLD (MCB)

<p>Inop table does not apply to S-ILS 16 all Cats and S-LOC 16 Cats C and D.</p>	<p>MALSF</p>	<p>MISSED APPROACH: Climb to 1000 then climbing left turn to 2000 direct MCB VORTAC and hold.</p>

ASOS 119.025	HOUSTON CENTER 126.8 327.8	UNICOM 123.05 (CTAF) 0
------------------------	--------------------------------------	----------------------------------



ELEV 413	TDZE 413
157° 4.6 NM from FAF	
MIRL Rwy 16-34	
FAF to MAP 4.1 NM	
Knots	60 90 120 150 180
Min:Sec	4:06 2:44 2:03 1:38 1:22

CATEGORY	A	B	C	D
S-ILS 16	632-3/4		219 (300-3/4)	
S-LOC 16	820-3/4 407 (500-3/4)		820-1/4 407 (500-1/4)	
CIRCLING	880-1 467 (500-1)		940-1/2 527 (600-1/2) 1160-2/2 747 (800-2/2)	

SC-4, 22 FEB 2024 to 21 MAR 2024

SC-4, 22 FEB 2024 to 21 MAR 2024

WAAS CH 72824 W16A	APP CRS 157°	Rwy Idg TDZE Apt Elev	5000 413 413
--	------------------------	-----------------------------	---

RNAV (GPS) RWY 16

MC COMB/PIKE COUNTY/JOHN E LEWIS FLD (MCB)

RNP APCH.

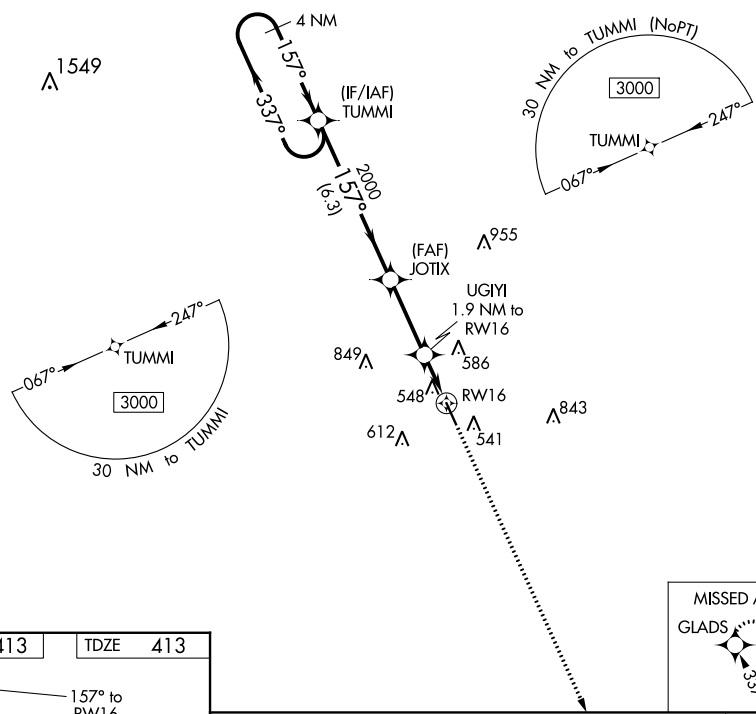
⚠ For uncompensated Baro-VNAV systems, LNAV/VNAV NA below -4°C (25°F) or above 54°C (130°F). Inop table does not apply to LPV all Cats. For inop ALS, increase LNAV/VNAV all Cats visibility to 7/8 SM.

MALSF

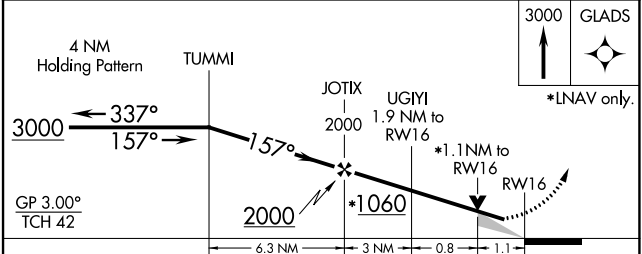
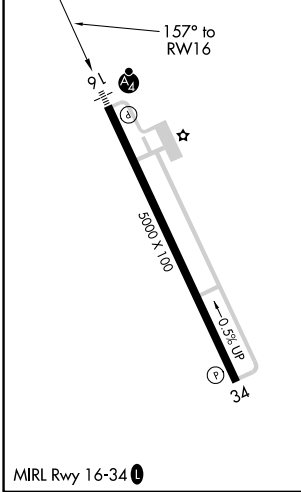


MISSED APPROACH:
Climb to 3000 direct
GLADS and hold.

ASOS 119.025	HOUSTON CENTER 126.8 327.8	UNICOM 123.05 (CTAF) 0
------------------------	--------------------------------------	----------------------------------



ELEV	413	TDZE	413
------	------------	------	------------



CATEGORY	A	B	C	D
LPV DA		615-3/4	202 (300-3/4)	
LNAV/VNAV DA		709-3/4	296 (300-3/4)	
LNAV MDA	800-3/4	387 (400-3/4)	800-7/8	387 (400-7/8)
C CIRCLING	880-1	467 (500-1)	940-1 1/2 527 (600-1 1/2)	1160-2 1/2 747 (800-2 1/2)

SC-4, 22 FEB 2024 to 21 MAR 2024

SC-4, 22 FEB 2024 to 21 MAR 2024

WAAS CH 77808 W34A	APP CRS 337°	Rwy Idg TDZE Apt Elev	5000 406 413
--	------------------------	-----------------------------	---

RNAV (GPS) RWY 34

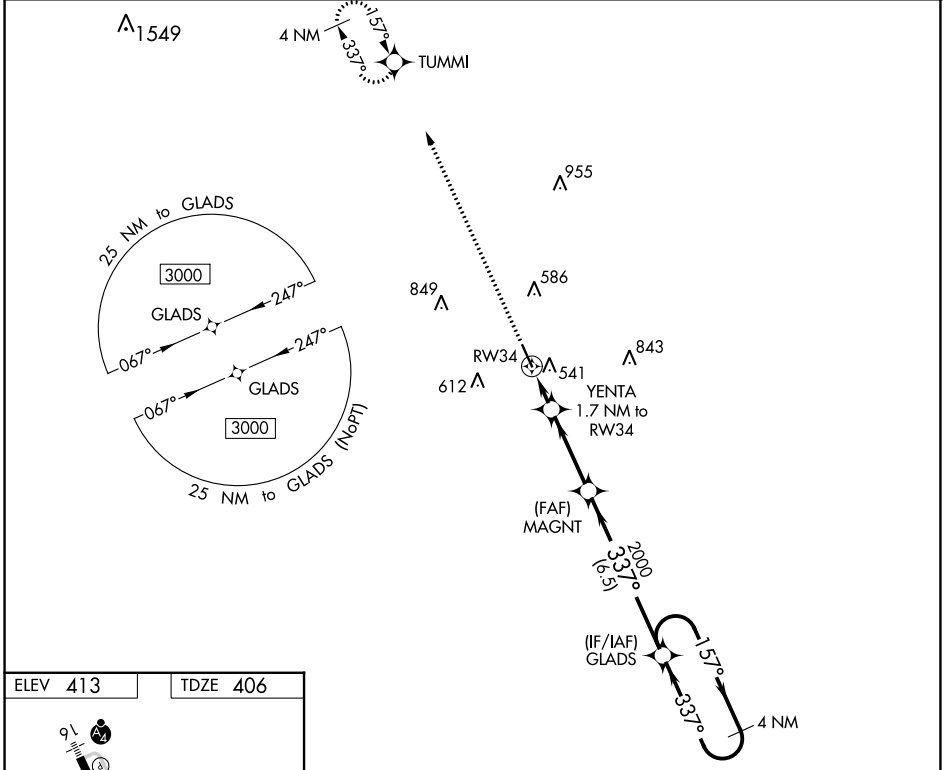
MC COMB/PIKE COUNTY/JOHN E LEWIS FLD (MCB)

RNP APCH.

⚠ For uncompensated Baro-VNAV systems, LNAV/VNAV NA below -4°C (25°F) or above 54°C (130°F).

MISSED APPROACH: Climb to 3000 direct TUMMI and hold.

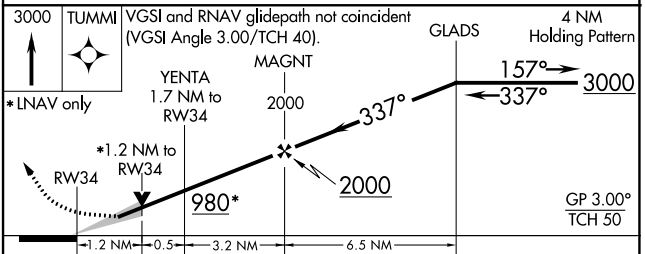
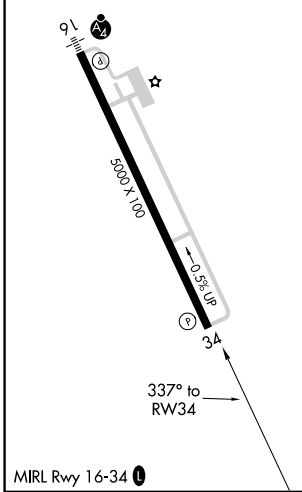
ASOS 119.025	HOUSTON CENTER 126.8 327.8	UNICOM 123.05 (CTAF) 0
------------------------	--------------------------------------	----------------------------------



SC-4, 22 FEB 2024 to 21 MAR 2024

SC-4, 22 FEB 2024 to 21 MAR 2024

ELEV 413	TDZE 406
-----------------	-----------------



CATEGORY	A	B	C	D
LPV DA		606-3/4	200 (200-3/4)	
LNAV/VNAV DA		739-1	333 (400-1)	
LNAV MDA	800-1	394 (400-1)	800-1 1/8	394 (400-1 1/8)
C CIRCLING	880-1	467 (500-1)	940-1 1/2 527 (600-1 1/2)	1160-2 1/2 747 (800-2 1/2)

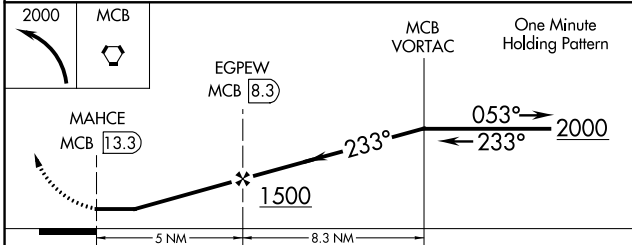
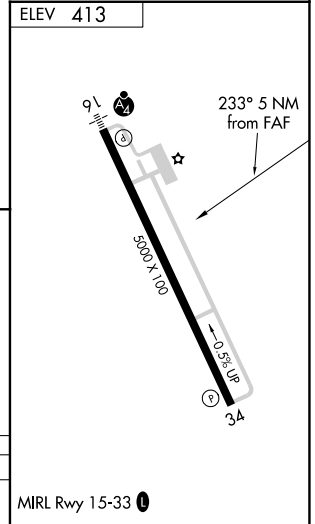
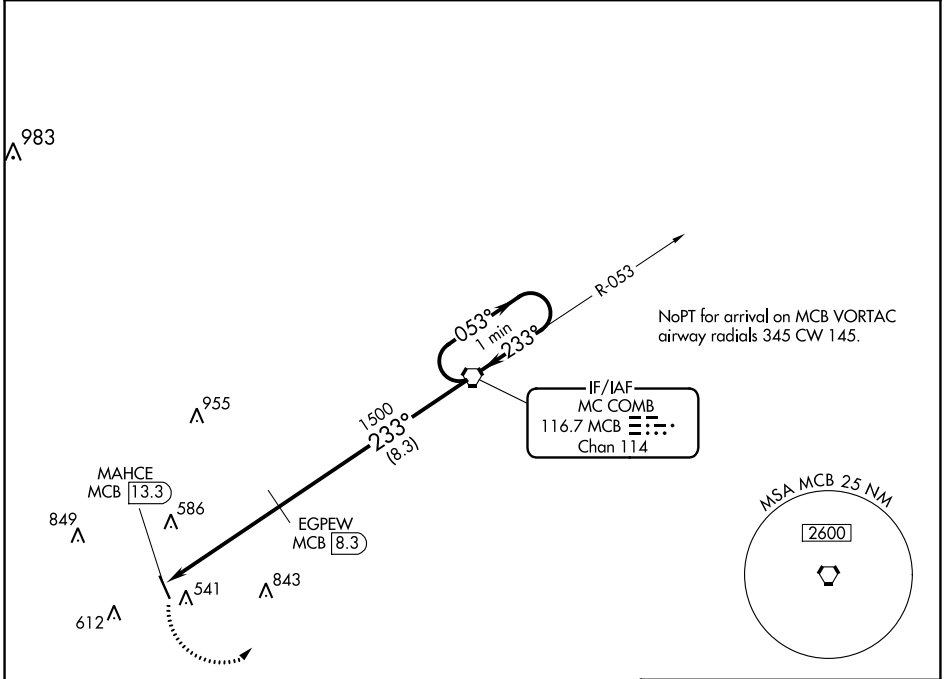
VORTAC MCB 116.7 Chan 114	APP CRS 233°	Rwy Idg TDZE Apt Elev N/A N/A 413
---	------------------------	---

VOR/DME-A

MC COMB/PIKE COUNTY/JOHN E LEWIS FLD (MCB)

⚠ When local altimeter setting not received, use Natchez altimeter setting and increase MDA 140 feet and Cat C and D visibility ¼ mile. MISSED APPROACH: Climbing left turn to 2000 direct MCB VORTAC and hold

ASOS 119.025	HOUSTON CENTER 126.8 327.8	UNICOM 123.05 (CTAF) 0
------------------------	--------------------------------------	----------------------------------



CATEGORY	A	B	C	D
C CIRCLING	880-1	467 (500-1)	940-1½ 527 (600-1½)	1160-2½ 747 (800-2½)