

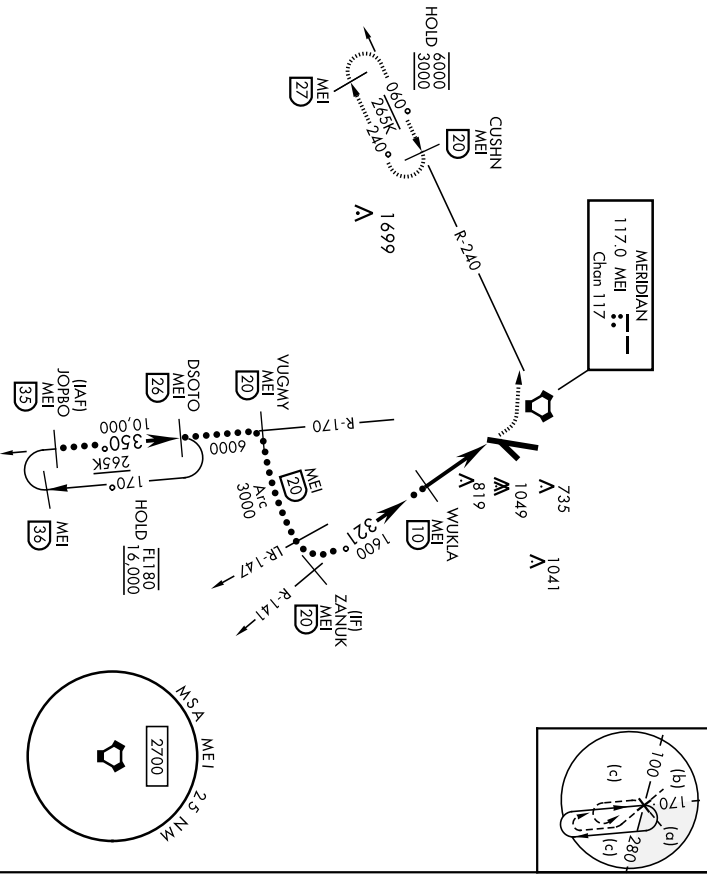
VORTAC MEI Chon 117	APCH CRS 321°	Rwy Idg N/A	TDZE Appl Elev 298
------------------------	------------------	----------------	--------------------------

AL-254 [USAF]

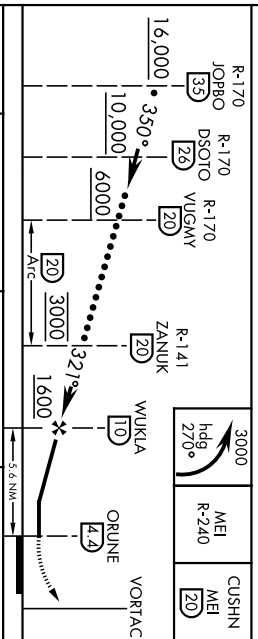
KEY FLD (KMEI)

MISSED APPROACH: Climbing left turn to 3000 on heading 270° and MEI VORTAC R-240 to CUSHN/
MEI 20 DME and hold.

ATIS 126.475 291.675	MERIDIAN APP CON 120.5 269.325	TOWER* 133.975 (CTAF) 257.8	GND CON 121.9 348.6
-------------------------	-----------------------------------	--------------------------------	------------------------



EMERG SAFE ALT 100 NM 3700



CATEGORY	C	D	E
CIRCLING*	1140-2½ 842 (900-2½)	1140-2¾ 842 (900-2¾)	1140-3 842 (900-3)
CIRCLING*	HATTIESBURG-LAUREL RGNL ALTIMETER SETTING		
CIRCLING*	1280-3	982	(1000-3)

<p>ELEV 298</p> <p>Rwy 1 ldg 9013'</p> <p>Rwy 19 ldg 9013'</p> <p>377 A</p> <p>61</p> <p>372</p> <p>356</p> <p>396</p> <p>10,003 x 150</p> <p>10,003 x 150</p> <p>321° 5.6 NM</p> <p>MIRL Rwy 4-22</p> <p>HIRL Rwy 1-19</p> <p>from FAE</p>
--

KEY FLD (KMEI)

MERIDIAN, MISSISSIPPI 32°20'N-88°45'W

Arndt 4A 20JUN19

LOC I-MEI 110.1	APP CRS 011°	Rwy Idg 9013
		TDZE 289
		Apt Elev 298

ILS or LOC RWY 1

KEY FLD (MEI)

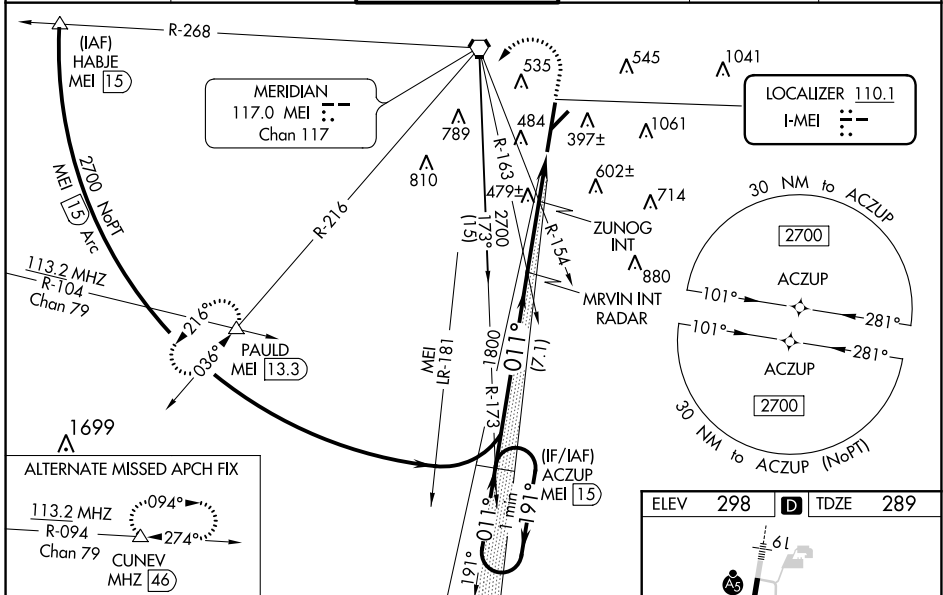
RNAV 1- GPS or DME required for procedure entry.

⚠ Circling NA southeast of Rwy 1 and 22. When local altimeter not received, use Hattiesburg/Laurel Rgnl altimeter setting and increase all DA 138 feet and all MDA 140 feet, S-ILS 1 all Cats visibility to RVR 3500, S-LOC 1 Cat B visibility to RVR 4000, Cat C, D, and E visibility 3/8 mile, and Circling Cats B and D visibility 1/4 mile, Cat C visibility 1/2 mile; increase ZUNOG Fix minimums S-LOC 1 Cats C, D, and E to RVR 6000, and Circling Cat C visibility 1/2 mile, Cat D and E visibility 1/4 mile. For inop MALSR when using Hattiesburg/Laurel Rgnl altimeter setting, increase S-ILS 1 all Cats visibility to RVR 6000 and S-LOC 1 Cat E visibility to 1 3/8 mile; increase ZUNOG Fix minimums S-LOC 1 Cat E visibility to 2 miles. Circling Rwy 22 NA at night. ** RVR 1800 authorized with use of FD or AP or HUD to DA (NA when using Hattiesburg/Laurel Rgnl altimeter setting).

MALSR

MISSED APPROACH: Climb to 1100 then climbing left turn to 3000 on MEI VORTAC R-216 to PAULD INT/MEI 13.3 DME and hold.

ATIS 126.475 291.675	MERIDIAN APP CON ★ 120.5 269.325	KEY TOWER ★ 133.975 (CTAF) 0 257.8	GND CON 121.9 348.6	CLNC DEL 121.9 348.6	UNICOM 122.95
--------------------------------	--	--	-------------------------------	--------------------------------	-------------------------



SC-4, 22 FEB 2024 to 21 MAR 2024

SC-4, 22 FEB 2024 to 21 MAR 2024

One Minute Holding Pattern 2700 ← 191°	ACZUP MEI 15	MRVIN INT RADAR	1100	3000	PAULD
GS 3.00° TCH 55			MEI R-216		△
	011°	1800			*LOC only.
		ZUNOG INT			
		7.1 NM	2.6 NM	2 NM	
CATEGORY	A	B	C	D	E
S-ILS 1		** 489/24	200 (200-1/2)		
S-LOC 1	900/24	611 (700-1/2)	900-1 3/8	611 (700-1 3/8)	
CIRCLING	900-1	602 (700-1)	960-1 3/4	1120-2 3/4	1120-3
			662 (700-1 3/4)	822 (900-2 3/4)	822 (900-3)
ZUNOG FIX MINIMUMS					
S-LOC 1	700/24	411 (500-1/2)	700/40	411 (500-3/4)	
CIRCLING	860-1	880-1	960-1 3/4	1120-2 3/4	1120-3
	562 (600-1)	582 (600-1)	662 (700-1 3/4)	822 (900-2 3/4)	822 (900-3)

ELEV 298	TDZE 289
TWR 372 356 10003 X 150 4599 X 150 011° 4.6 NM from FAF MRL Rwy 4-22 HIRL Rwy 1-19	
FAF to MAP 4.6 NM	
Knots	60 90 120 150 180
Min:Sec	4:36 3:04 2:18 1:50 1:32

LOC/DME I-KQ	APP CRS	Rwy Idg	9013
111.35	191°	TDZE	293
Chan 50 (Y)		Apt Elev	298

ILS or LOC RWY 19

KEY FLD (MEI)

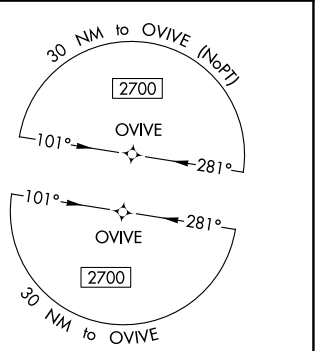
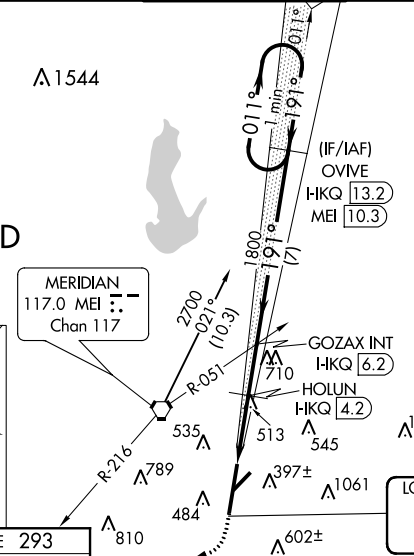
⚠ When local altimeter not received, use Hattiesburg/Laurel Rgnl altimeter setting and increase all DA 138 feet and all MDA 140 feet, increase S-ILS 19 all Cats visibility to RVR 6000, S-LOC 19 Cats C, D, and E visibility to 2 miles, and Circling Cats A/D visibility 1/4 mile and Cat C visibility 1/2 mile; increase HOLUN Fix minimums S-LOC Cats C, D and E to 1 1/2 mile, and Circling Cat C visibility 1/2 mile, and Cat D visibility 1/4 mile. For inop MALSRS, increase S-ILS 19 all Cats visibility to RVR 6000, and S-LOC 19 Cat E to 2 miles; increase HOLUN fix minimums S-LOC 19 Cat E visibility to 1 1/2 mile. For inop MALSRS when using Hattiesburg/Laurel Rgnl altimeter setting, increase S-ILS 19 all Cats visibility to 1 1/2 mile, and S-LOC 19 Cat E to 2 1/2 miles; increase HOLUN Fix minimums S-LOC 19 Cat E visibility to 1 3/4 mile. Helicopter visibility reduction below RVR 4000 NA. Night landing: Rwy 22 NA. Circling NA southeast of Rwy 1 and 22. VDP NA when using Hattiesburg/Laurel Rgnl altimeter setting.

MALSRS

MISSED APPROACH:
Climb to 1000 then climbing right turn to 3000 on heading 250° and MEI VORTAC R-216 to PAULD INT/MEI 13.3 DME and hold.

ATIS	MERIDIAN APP CON *	KEY TOWER *	GND CON	CLNC DEL	UNICOM
126.475 291.675	120.5 269.325	133.975 (CTAF) 0 257.8	121.9 348.6	121.9 348.6	122.95

ALTERNATE MISSED APCH FIX



DME REQUIRED

MISSED APCH FIX

GPS REQUIRED FOR TERMINAL ARRIVAL AREA

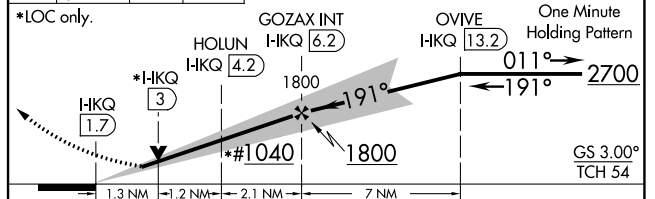
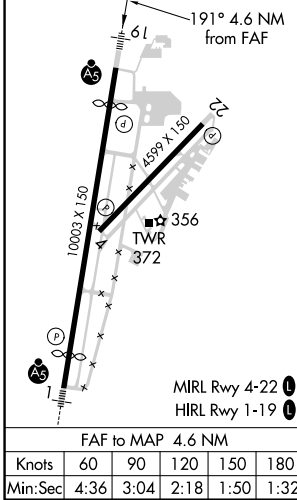
LOCALIZER 111.35
I-KQ
Chan 50 (Y)

ELEV	298	TDZE	293
------	-----	------	-----

↑ hdg 250°

PAULD MEI R-216

VGSI and ILS glidepath not coincident (VGSI Angle 3.00/TCH 69). #1180 when using Hattiesburg/Laurel Rgnl altimeter setting.



CATEGORY	A	B	C	D	E
S-ILS 19	633/40 340 (400-3/4)				
S-LOC 19	1040/40	747 (800-3/4)	1040-1 3/4	747 (800-1 3/4)	1120-3
CIRCLING	1040-1	742 (800-1)	1040-1 1/4	742 (800-2 1/4)	822 (900-2 3/4)
	742 (800-1)	742 (800-1 1/4)	742 (800-2 1/4)	822 (900-2 3/4)	822 (900-3)
	HOLUN FIX MINIMUMS				
S-LOC 19	780/40	487 (500-3/4)	780/50	487 (500-1)	
CIRCLING	860-1	880-1	960-1 3/4	1120-2 3/4	1120-3
	562 (600-1)	582 (600-1)	662 (700-1 1/4)	822 (900-2 3/4)	822 (900-3)

SC-4, 22 FEB 2024 to 21 MAR 2024

SC-4, 22 FEB 2024 to 21 MAR 2024

WAAS CH 86500 W01A	APP CRS 011°	Rwy Idg 9013 TDZE 289 Apt Elev 298
--	------------------------	---


RNAV (GPS) RWY 1

KEY FLD (MEI)

⚠ For uncompensated Baro-VNAV systems, LNAV/VNAV NA below -8°C (18°F) or above 54°C (130°F). Circling NA southeast of Rwy 1 and 22. DME/DME RNP-0.3 NA.

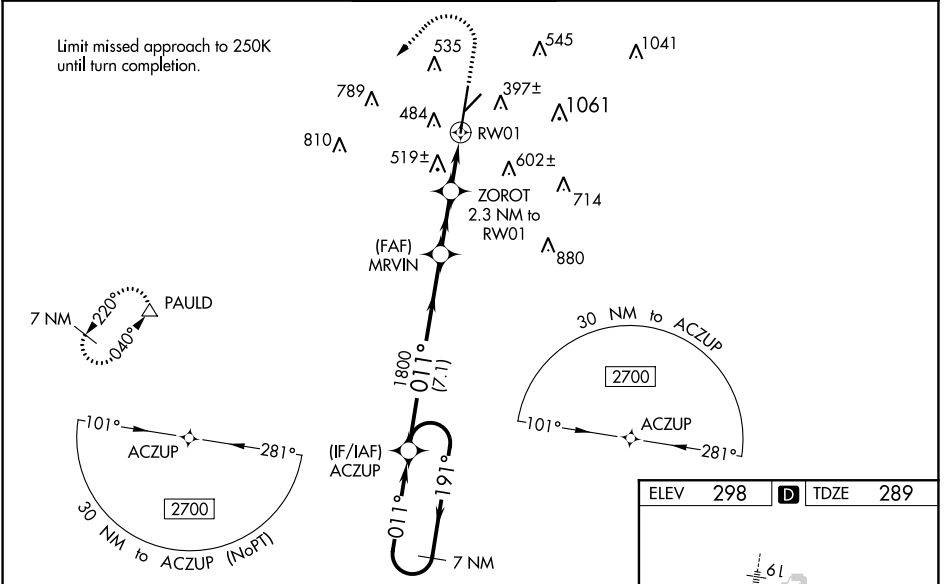
⚠ When local altimeter setting not received, use Hattiesburg/Laurel Rgnl altimeter setting and increase all DA 138 feet and all MDA 140 feet, LPV all Cats visibility to RVR 3100, LNAV/VNAV all Cats and LNAV Cats C, D, and E visibilities to 1½ mile, and Circling Cat C visibility ½ mile and Cat D visibility ¼ mile. For inop MALSRL increase LPV Cat E to RVR 4000, LNAV/VNAV Cat E visibility to RVR 6000, and LNAV Cat E visibility to 1½ mile. For inop MALSRL when using Hattiesburg/Laurel Rgnl altimeter setting, increase LPV all Cats visibility to RVR 5000, LNAV/VNAV Cat E visibility to 1½ mile, and LNAV Cat E visibility to 1¾ mile. VDP and Baro-VNAV NA when using Hattiesburg/Laurel Rgnl altimeter setting. Night landing: Rwy 22 NA. ** RVR 1800 authorized with use of FD or AP or HUD to DA, NA when using Hattiesburg/Laurel Rgnl altimeter setting.

MALSRL



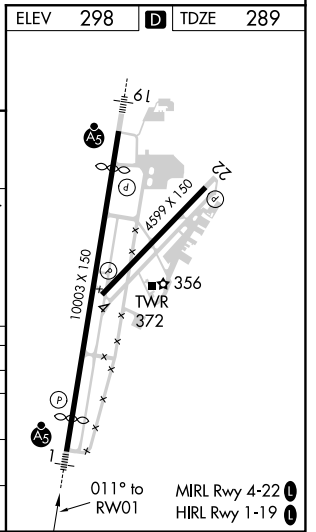
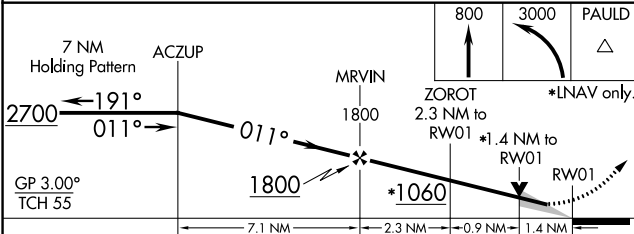
MISSED APPROACH:
Climb to 800 then climbing left turn to 3000 direct PAULD and hold.

ATIS 126.475 291.675	MERIDIAN APP CON * 120.5 269.325	KEY TOWER * 133.975 (CTAF) 257.8	GND CON 121.9 348.6	CLNC DEL 121.9 348.6	UNICOM 122.95
--------------------------------	--	--	-------------------------------	--------------------------------	-------------------------



SC-4, 22 FEB 2024 to 21 MAR 2024

SC-4, 22 FEB 2024 to 21 MAR 2024



CATEGORY	A	B	C	D	E
LPV DA **	489/24		200 (200-½)		
LNAV/VNAV DA	709/47		420 (500-1)		
LNAV MDA	780/24	491 (500-½)	780/50		491 (500-1)
CIRCLING	860-1 562 (600-1)	880-1 582 (600-1)	960-1¾ 662 (700-1¾)	1120-2¾ 822 (900-2¾)	1120-3 822 (900-3)

WAAS CH 61003 W19A	APP CRS 191°	Rwy ldg TDZE 293 Apt Elev 298	9013
--	------------------------	---	-------------

RNAV (GPS) RWY 19

KEY FLD (MEI)

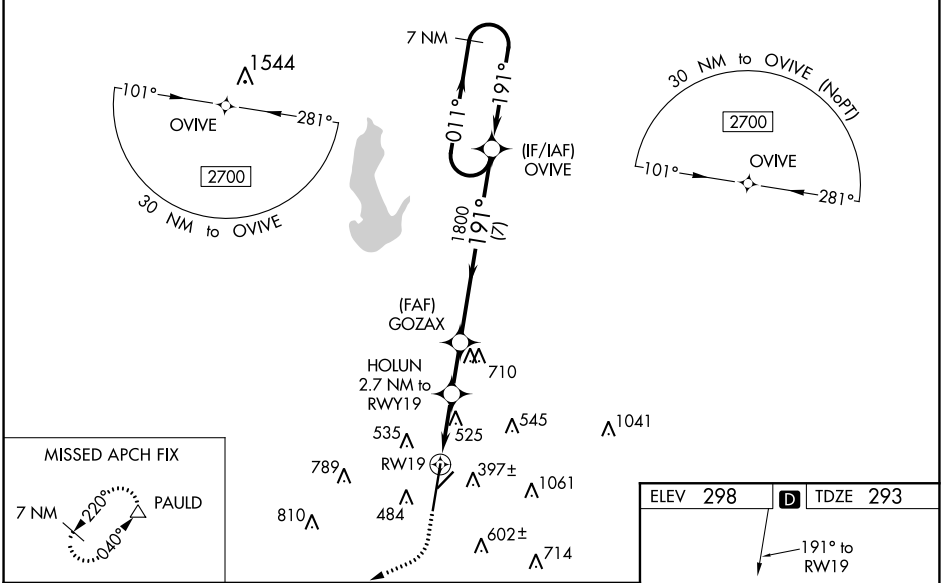
⚠ For uncompensated Baro-VNAV systems, LNAV/VNAV NA below -8°C (18°F) or above 54°C (130°F). Circling NA southeast of Rwy 1 and 22. DME/DME RNP-0.3 NA.

⚠ When local altimeter setting not received, use Hattiesburg/Laurel Rgnl altimeter setting and increase all DA 138 feet and all MDA 140 feet, increase LPV all Cats visibility to 1¼ mile, LNAV/VNAV all Cats visibility to 1½ mile, LNAV Cats C, D, and E visibility to 1¾ mile, and Circling Cat C visibility ½ mile and Cat D visibility ¼ mile. For inop MALSRL increase LPV Cat E to RVR 5500, LNAV/VNAV Cat E visibility to 1½ mile, and LNAV Cat E visibility to 1¾ mile. For inop MALSRL when using Hattiesburg/Laurel Rgnl altimeter setting, increase LPV Cat E visibility to 1¾ mile, LNAV/VNAV Cat E visibility to 1¾ mile and LNAV Cat E visibility to 1¾ mile. Helicopter visibility reduction below RVR 4000 NA. Baro-VNAV and VDP NA when using Hattiesburg/Laurel Rgnl altimeter setting. Night landing: Rwy 22 NA.

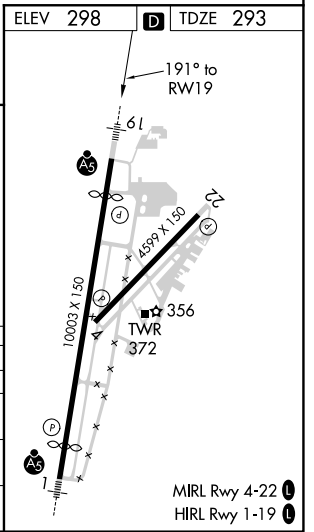
MALSRL

MISSED APPROACH:
Climb to 900 then climbing right turn to 3000 direct PAULD and hold.

ATIS 126.475 291.675	MERIDIAN APP CON * 120.5 269.325	KEY TOWER * 133.975 (CTAF) 0 257.8	GND CON 121.9 348.6	CLNC DEL 121.9 348.6	UNICOM 122.95
--------------------------------	--	--	-------------------------------	--------------------------------	-------------------------



900	3000	PAULD	VGSI and RNAV glidepath not coincident (VGSI Angle 3.00/TCH 69).		7 NM Holding Pattern
*LNAV only.	HOLUN 2.7 NM to RWY 19	GOZAX 1800	191°	1800	2700
	*1.4 NM to RWY 19	*1200			GP 3.00° TCH 54
	1.4 NM	1.3 NM	1.9 NM	7 NM	
CATEGORY	A	B	C	D	E
LPV DA		651/40		358 (400-¾)	
LNAV/VNAV DA		745/53		452 (500-1)	
LNAV MDA	780/40	487 (500-¾)		780/50 487 (500-1)	
CIRCLING	860-1	880-1	960-1¾	1120-2¾	1120-3
	562 (600-1)	582 (600-1)	662 (700-1¾)	822 (900-2¾)	822 (900-3)



SC-4, 22 FEB 2024 to 21 MAR 2024

SC-4, 22 FEB 2024 to 21 MAR 2024

WAAS CH 48833 W22A	APP CRS 226°	Rwy Idg 4599 TDZE 298 Apt Elev 298
--	------------------------	---

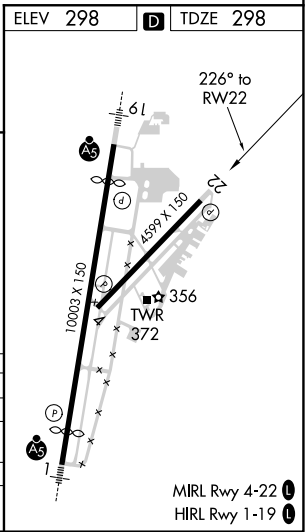
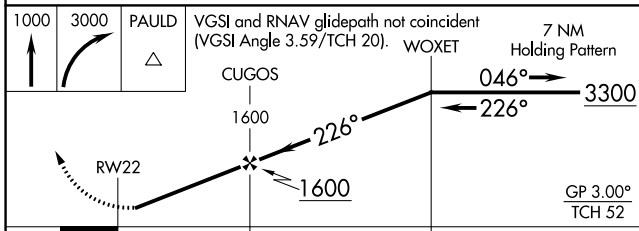
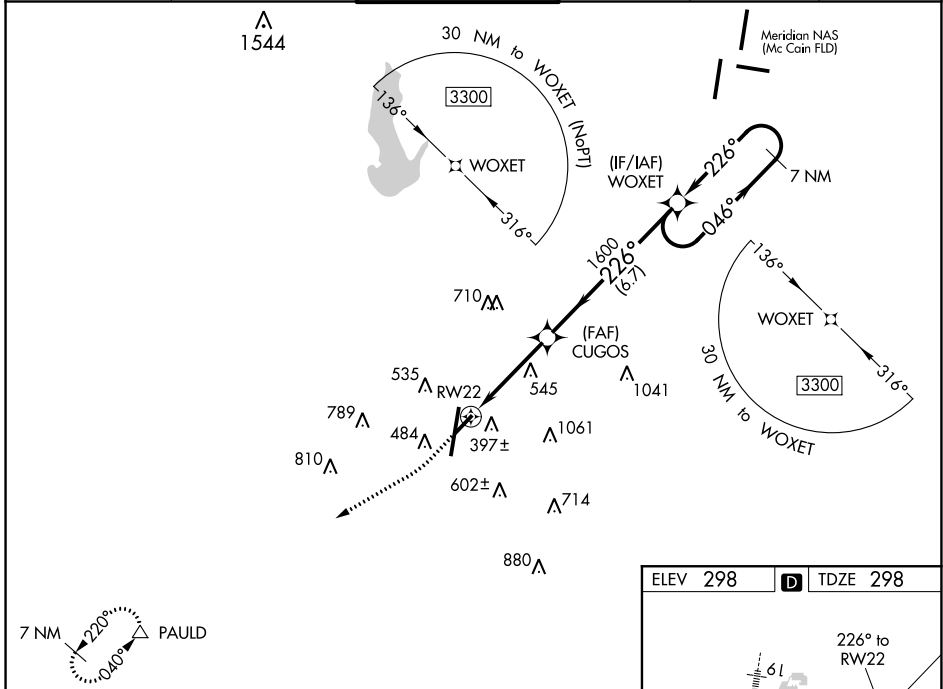
RNAV (GPS) RWY 22

KEY FLD (MEI)

⚠ Baro-VNAV NA when using Hattiesburg/Laurel Rgnl altimeter setting. For uncompensated Baro-VNAV systems, LNAV/VNAV NA below -8°C (18°F) or above 54°C (130°F). Circling NA southeast of Rwys 1 and 22. DME/DME RNP-0.3 NA. When local altimeter setting not received, use Hattiesburg/Laurel Rgnl altimeter setting and increase all DA 138 feet and all MDA 140 feet; increase LPV all Cats visibility 3/8 mile, LNAV/VNAV all Cats visibility 3/4 mile, LNAV Cat B 1/4 mile, Cat C and D visibility 5/8 mile, and Circling Cat C visibility 1/2 mile and Cat B and D visibility 1/4 mile. Helicopter visibility reduction below 1 SM NA. Straight-in/Circling Rwy 22 NA at night.

MISSED APPROACH: Climb to 1000 then climbing right turn to 3000 direct PAULD and hold.

ATIS 126.475 291.675	MERIDIAN APP CON ★ 120.5 269.325	KEY TOWER ★ 133.975 (CTAF) 257.8	GND CON 121.9 348.6	CLNC DEL 121.9 348.6	UNICOM 122.95
--------------------------------	--	--	-------------------------------	--------------------------------	-------------------------



CATEGORY	A	B	C	D
LPV DA	562-1 264 (300-1)			
LNAV/VNAV DA	822-1 3/4 524 (600-1 3/4)			
LNAV MDA	940-1	642 (700-1)	940-1 7/8	642 (700-1 7/8)
C CIRCLING	940-1	642 (700-1)	960-2	1120-2 3/4 662 (700-2) 822 (900-2 3/4)

SC-4, 22 FEB 2024 to 21 MAR 2024

SC-4, 22 FEB 2024 to 21 MAR 2024

WAAS CH 42533 W04A	APP CRS 046°	Rwy Idg TDZE Apt Elev	4599 295 298
--	------------------------	-----------------------------	---

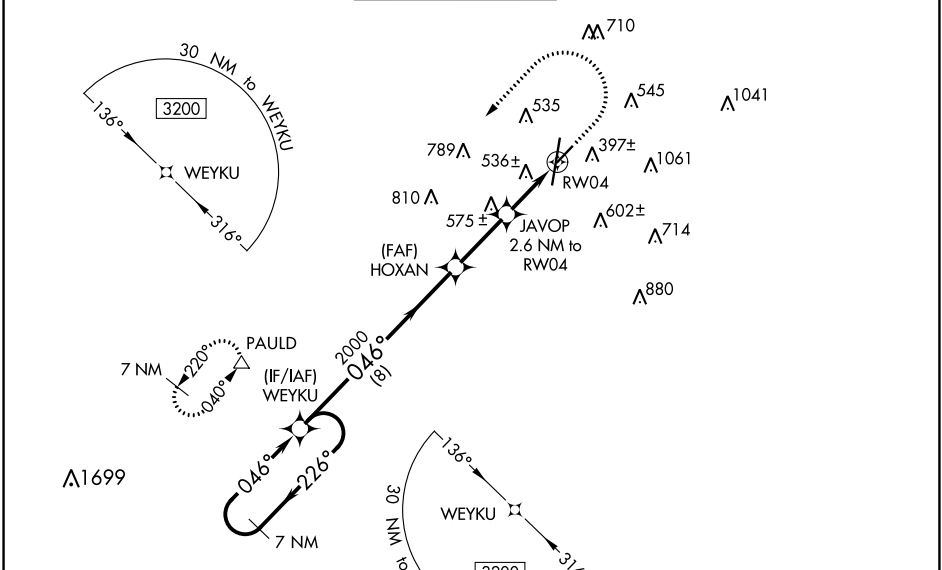
RNAV (GPS) RWY 4

KEY FLD (MEI)

⚠ For uncompensated Baro-VNAV systems, LNAV/VNAV NA below -8°C (18°F) or above 54°C (130°F). Circling NA southeast of Rwy 1 and 22. DME/DME RNP-0.3 NA. When local altimeter setting not received, use Hattiesburg/Laurel Rgnl altimeter setting and increase all DA 138 feet and all MDA 140 feet; increase LPV and LNAV/VNAV all Cats visibilities ½ mile, LNAV Cats C/D visibility ½ mile, and Circling Cat C visibility ½ mile and Cat D visibility ¼ mile. Helicopter visibility reduction below ¾ SM NA. Baro-VNAV and VDP NA with Hattiesburg/Laurel Rgnl altimeter setting. Night landing: Rwy 22 NA.

MISSED APPROACH:
Climb to 1300 then climbing left turn to 3000 direct PAULD and hold.

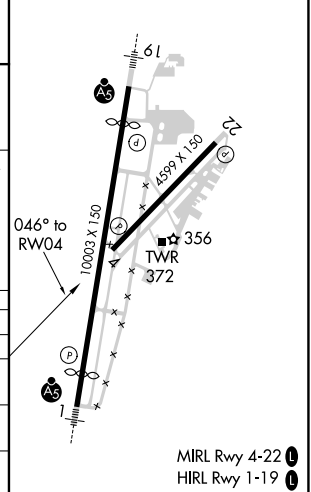
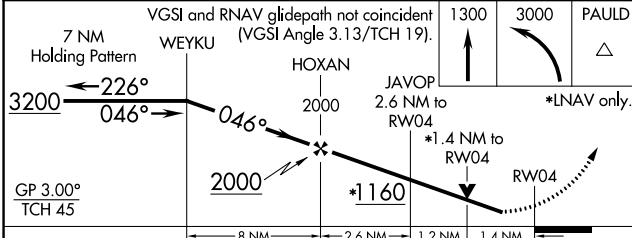
ATIS 126.475 291.675	MERIDIAN APP CON ★ 120.5 269.325	KEY TOWER ★ 133.975 (CTAF) 0 257.8	GND CON 121.9 348.6	CLNC DEL 121.9 348.6	UNICOM 122.95
--------------------------------	--	--	-------------------------------	--------------------------------	-------------------------



SC-4, 22 FEB 2024 to 21 MAR 2024

SC-4, 22 FEB 2024 to 21 MAR 2024

ELEV 298	D TDZE 295
----------	-------------------



CATEGORY	A	B	C	D
LPV DA	576-7/8		281 (300-7/8)	
LNAV/VNAV DA	849-17/8		554 (600-17/8)	
LNAV MDA	800-1 505 (600-1)		800-13/8 505 (600-13/8)	
C CIRCLING	860-1 562 (600-1)	880-1 582 (600-1)	960-13/4 662 (700-13/4)	1120-23/4 822 (900-23/4)

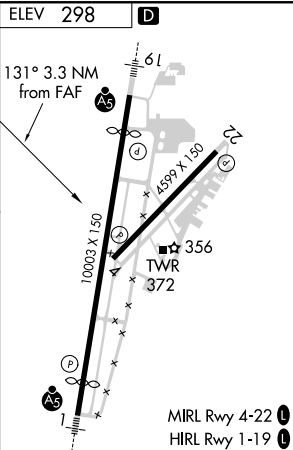
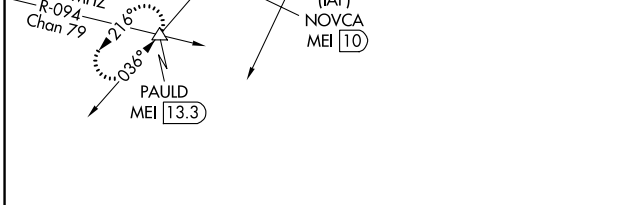
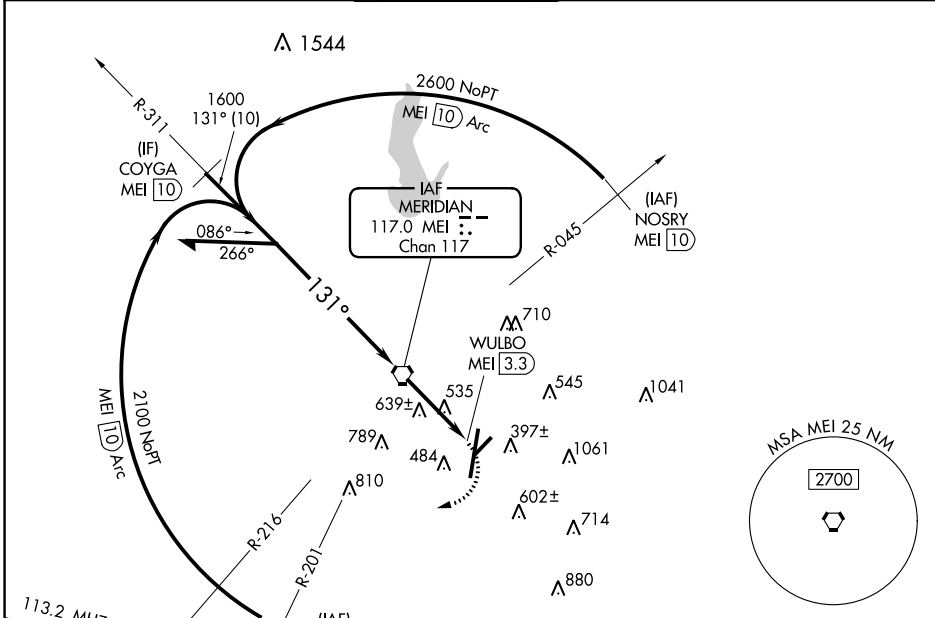
MRL Rwy 4-22 **Ⓛ**
HIRL Rwy 1-19 **Ⓛ**

VORTAC MEI 117.0 Chan 117	APP CRS 131°	Rwy Idg TDZE Apt Elev	N/A N/A 298
---	------------------------	-----------------------------	--

⚠ Circling to Rwy 22 NA at night. Circling NA southeast of Rws 1 and 22.
 When local altimeter setting not received, use Hattiesburg/Laurel Rgnl altimeter setting and increase all MDA 140 feet, increase Cat C visibility ½ mile and Cat D visibility ¼ mile. Procedure turn NA for Cat E.

MISSED APPROACH: Climbing right turn to 3000 on heading 260° and MEI R-216 to PAULD INT/MEI 13.3 DME and hold.

ATIS 126.475 291.675	MERIDIAN APP CON ★ 120.5 269.325	KEY TOWER ★ 133.975 (CTAF) 257.8	GND CON 121.9 348.6	CLNC DEL 121.9 348.6	UNICOM 122.95
--------------------------------	--	--	-------------------------------	--------------------------------	-------------------------



Remain within 10 NM	2100	311°	6000	3000	hdg 260°	MEI R-216	PAULD
	1600	131°	3.3 NM	WULBO MEI 3.3			

CATEGORY	A	B	C	D	E	FAF to MAP 3.3 NM					
	900-1	602 (700-1)	960-1¾ 662 (700-1¾)	1120-2¾ 822 (900-2¾)	1120-3 822 (900-3)	Knots	60	90	120	150	180
ⓐ CIRCLING						Min:Sec	3:18	2:12	1:39	1:19	1:06

SC-4, 22 FEB 2024 to 21 MAR 2024

SC-4, 22 FEB 2024 to 21 MAR 2024