

WAAS CH 50327 W27A	APP CRS 268°	Rwy Idg TDZE Apt Elev	4218 1015 1021
--	------------------------	-----------------------------	---

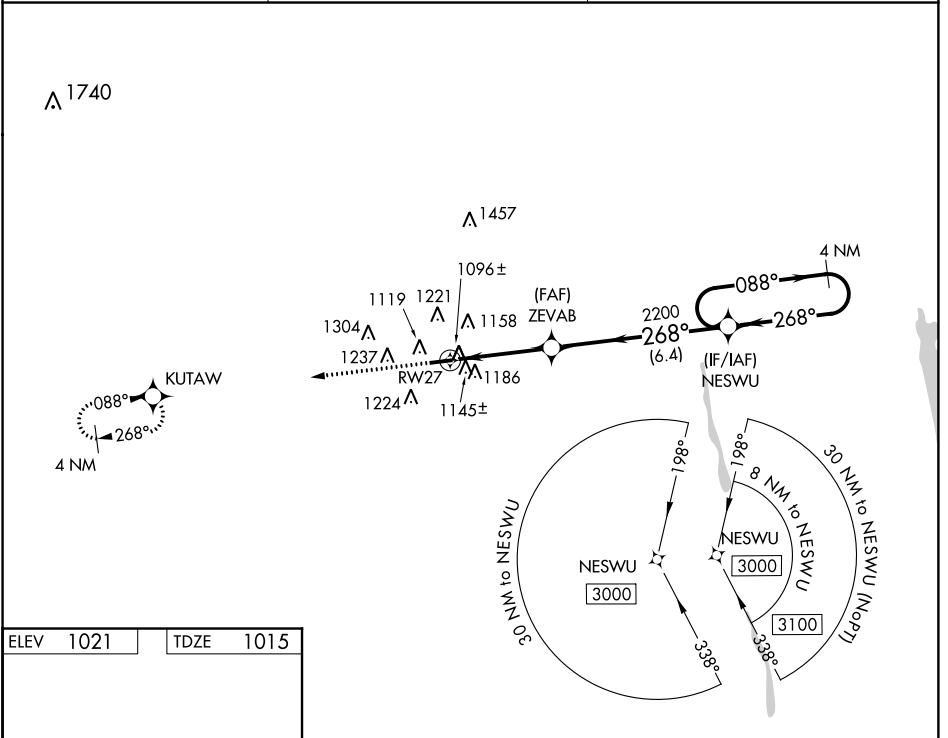
RNAV (GPS) RWY 27

UNION COUNTY (MRT)

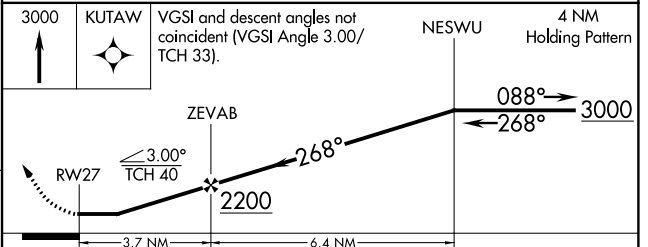
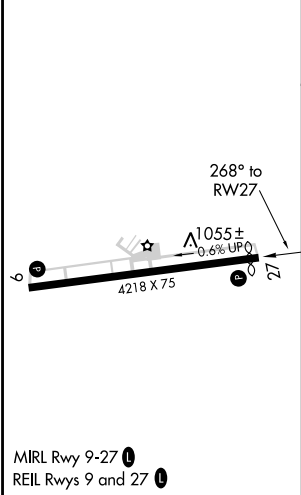
⚠ Night landing: Rwy 27 NA. DME/DME RNP-0.3 NA. Helicopter visibility reduction below 1 SM NA. When local altimeter setting not received, use Port Columbus Intl altimeter setting and increase all MDA 100 feet, LP and LNAV Cat C and D visibility to 1 3/8 miles and Circling Cat C visibility to 1 3/4 miles.

MISSED APPROACH: Climb to 3000 direct KUTAW and hold.

AWOS-3 119.275	COLUMBUS APP CON 125.95 317.775	UNICOM 122.8 (CTAF)
--------------------------	---	-------------------------------



ELEV 1021	TDZE 1015
-----------	-----------



CATEGORY	A	B	C	D
LP MDA	1360-1 345 (400-1)			
LNAV MDA	1400-1	385 (400-1)	1400-1 1/8	385 (400-1 1/8)
CIRCLING	1520-1 499 (500-1)	1540-1 519 (600-1)	1540-1 1/2 519 (600-1 1/2)	1580-2 559 (600-2)

EC-2, 19 JUL 2018 to 16 AUG 2018

EC-2, 19 JUL 2018 to 16 AUG 2018

WAAS CH 72827 W09A	APP CRS 088°	Rwy Idg TDZE Apt Elev	4218 1021 1021
--	------------------------	-----------------------------	---

RNAV (GPS) RWY 9
UNION COUNTY (MRT)

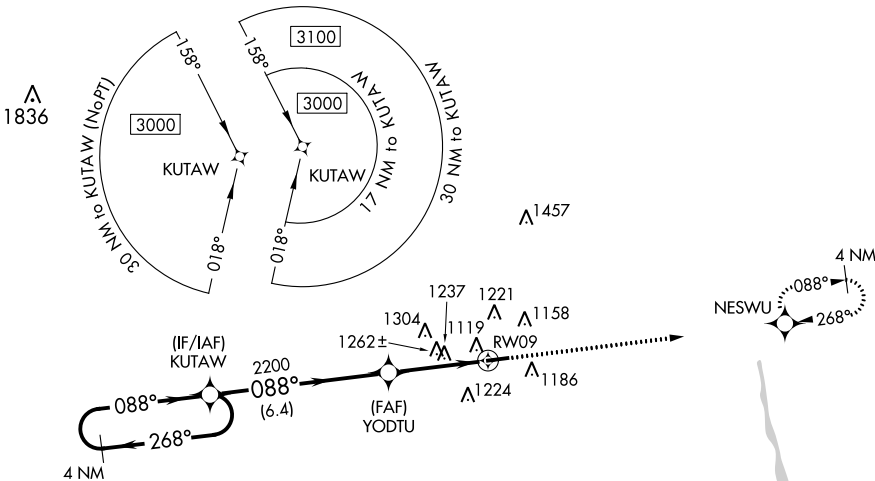
▼ Night landing: Rwy 27 NA. Helicopter visibility reduction below 3/4 SM NA.
▲ DME/DME RNP-0.3 NA. When local altimeter setting not received, use Port Columbus Intl altimeter setting and increase all MDA 100 feet, LP Cats C and D visibility to 1 1/2 miles, LNAV Cats C and D and Circling Cat C visibility to 1 1/4 miles.

MISSED APPROACH: Climb to 3000 direct NESWU and hold.

AWOS-3
119.275

COLUMBUS APP CON
125.95 317.775

UNICOM
122.8 (CTAF)

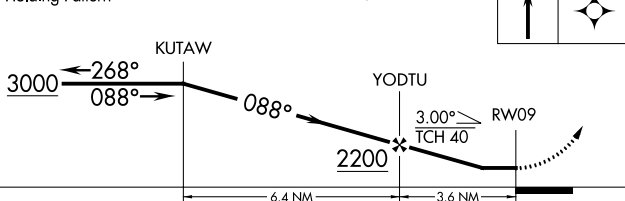


EC-2, 19 JUL 2018 to 16 AUG 2018

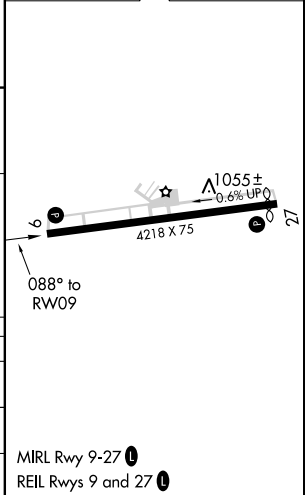
EC-2, 19 JUL 2018 to 16 AUG 2018

ELEV 1021	TDZE 1021
-----------	-----------

4 NM Holding Pattern VGSI and descent angles not coincident (VGSI Angle 3.00/TCH 25).



CATEGORY	A	B	C	D
LP MDA	1500-1	479 (500-1)	1500-1 3/8	479 (500-1 3/8)
LNAV MDA	1520-1	499 (500-1)	1520-1 3/8	499 (500-1 3/8)
CIRCLING	1520-1 499 (500-1)	1540-1 519 (600-1)	1540-1 1/2 519 (600-1 1/2)	1580-2 559 (600-2)



MIRL Rwy 9-27
REIL Rwys 9 and 27