

(CONLE4.CONLE) 21224

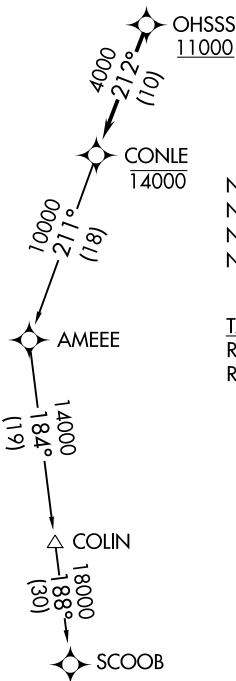
AL-5222 (FAA)

MARTIN STATE (MTN)
BALTIMORE, MARYLAND

CONLE FOUR DEPARTURE (RNAV)

ATIS
124.925
GND CON
121.8 253.4
MARTIN TOWER ★
121.3 (CTAF) 254.425
UNICOM
122.95
POTOMAC DEP CON
119.7 290.475

**TOP ALTITUDE:
ASSIGNED BY ATC**



NOTE: RNAV 1.
NOTE: DME/DME/IRU or GPS required.
NOTE: RADAR required.
NOTE: For turbojet aircraft only.

TAKEOFF MINIMUMS:
Rwy 15: Standard.
Rwy 33: 300-1³/₈ or standard with minimum climb of 215' per NM to 1100.

NOTE: Chart not to scale.

DEPARTURE ROUTE DESCRIPTION

Climb on assigned heading to ATC assigned altitude, for vectors to cross OHSSS at or above 11000, then on track 212° to cross CONLE at or below 14000, then on assigned transition. Expect filed altitude within 10 minutes after departure.

COLIN TRANSITION (CONLE4.COLIN)

SCOOB TRANSITION (CONLE4.SCOOB)

CONLE FOUR DEPARTURE (RNAV)
(CONLE4.CONLE) 31DEC20

BALTIMORE, MARYLAND
MARTIN STATE (MTN)

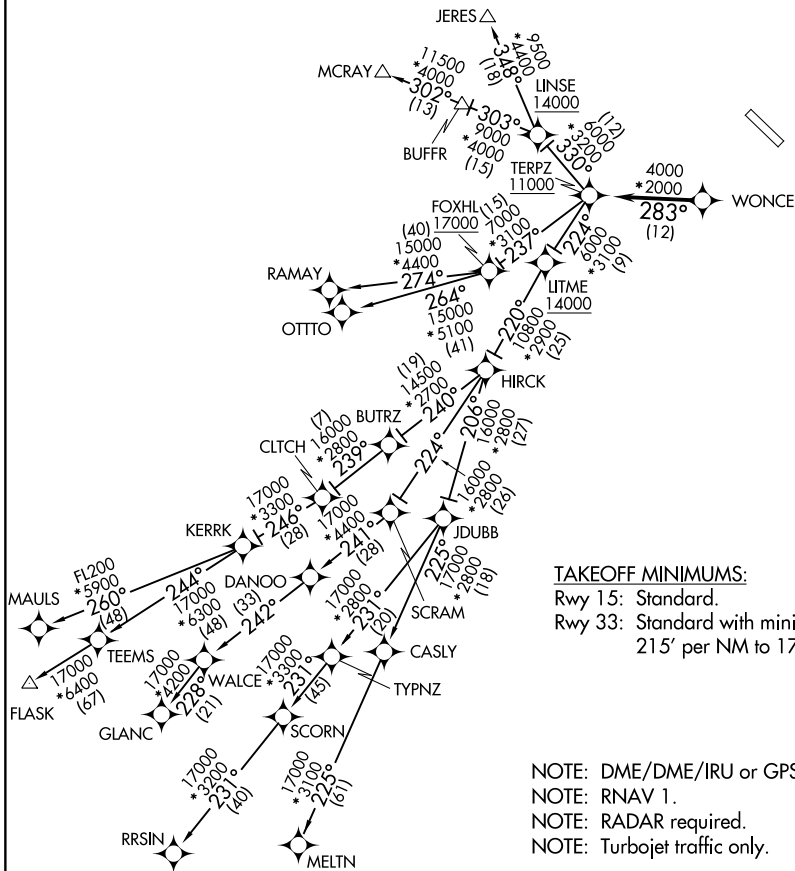
NE-3, 22 FEB 2024 to 21 MAR 2024

NE-3, 22 FEB 2024 to 21 MAR 2024

TERPZ SEVEN DEPARTURE (RNAV)

ATIS
 124.925
 GND CON
 121.8 253.4
 MARTIN TOWER ★
 121.3 (CTAF) 254.425
 UNICOM
 122.95
 POTOMAC DEP CON
 119.7 290.475

TOP ALTITUDE:
RAMAY, OTTTO, MAULS, FLASK,
RRSIN, GLANC, MELTN
TRANSITIONS: 17000
JERES, MCRAY TRANSITIONS:
16000



TAKEOFF MINIMUMS:

Rwy 15: Standard.
 Rwy 33: Standard with minimum climb of 215' per NM to 1700.

- NOTE: DME/DME/IRU or GPS required.
- NOTE: RNAV 1.
- NOTE: RADAR required.
- NOTE: Turbojet traffic only.

NOTE: Chart not to scale.

TERPZ SEVEN DEPARTURE (RNAV)

NE-3, 22 FEB 2024 to 21 MAR 2024

NE-3, 22 FEB 2024 to 21 MAR 2024

TERPZ SEVEN DEPARTURE (RNAV)



DEPARTURE ROUTE DESCRIPTION

Fly heading and maintain altitude assigned by ATC, expect RADAR vectors to WONCE, then on track 283° to cross TERPZ at or above 11000, thence. . . .

. . . on assigned transition: Departures on JERES and MCRAY transitions maintain 16000. Departures on RAMAY, OTTTO, MAULS, FLASK, MELTN, RRSIN, GLANC transitions maintain 17000, expect further clearance to filed altitude within 10 minutes after departure.

FLASK TRANSITION (TERPZ7.FLASK)

GLANC TRANSITION (TERPZ7.GLANC)

JERES TRANSITION (TERPZ7.JERES)

MAULS TRANSITION (TERPZ7.MAULS)

MCRAY TRANSITION (TERPZ7.MCRAY)

MELTN TRANSITION (TERPZ7.MELTN)

OTTTO TRANSITION (TERPZ7.OTTTO)

RAMAY TRANSITION (TERPZ7.RAMAY)

RRSIN TRANSITION (TERPZ7.RRSIN)

NE-3, 22 FEB 2024 to 21 MAR 2024

NE-3, 22 FEB 2024 to 21 MAR 2024